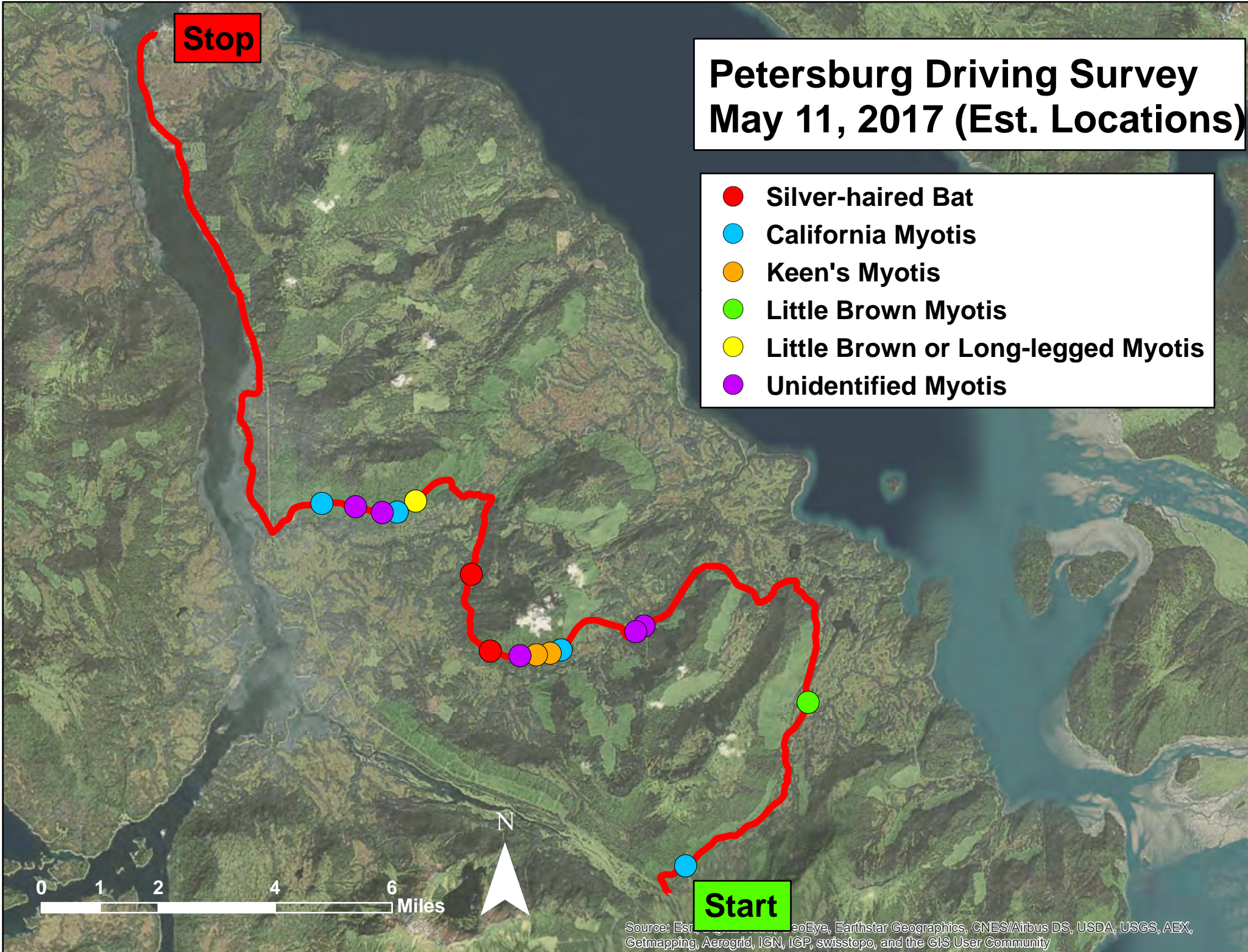


Petersburg Driving Survey May 11, 2017 (Est. Locations)

- Silver-haired Bat
- California Myotis
- Keen's Myotis
- Little Brown Myotis
- Little Brown or Long-legged Myotis
- Unidentified Myotis



Source: Esri, DeLorme, GeoEye, Earthstar Geographics, CNES/Airbus DS, USDA, USGS, AEX, Getmapping, Aerogrid, IGN, IGP, swisstopo, and the GIS User Community