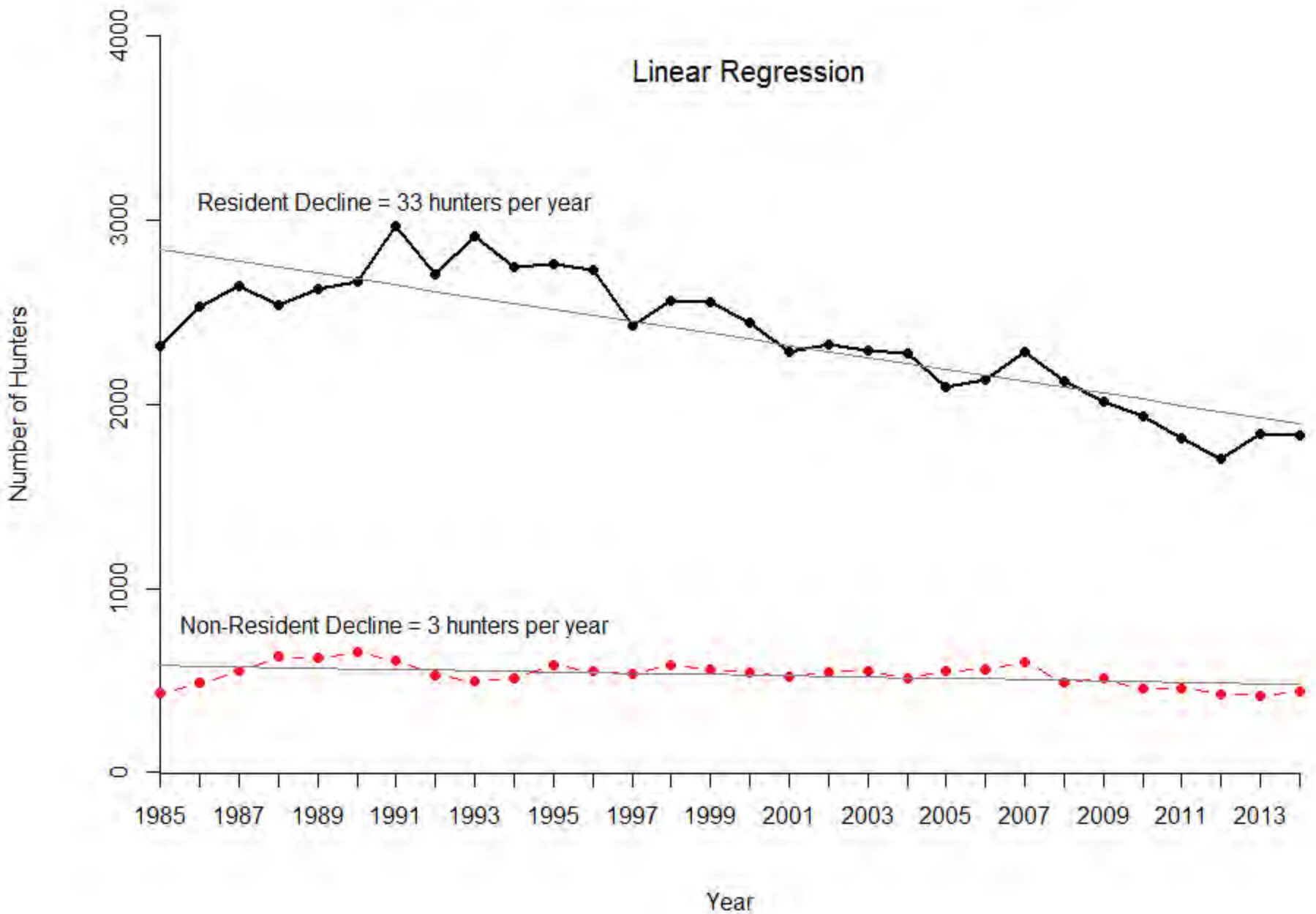


Hunters and Harvest Numbers Possible Statewide Changes

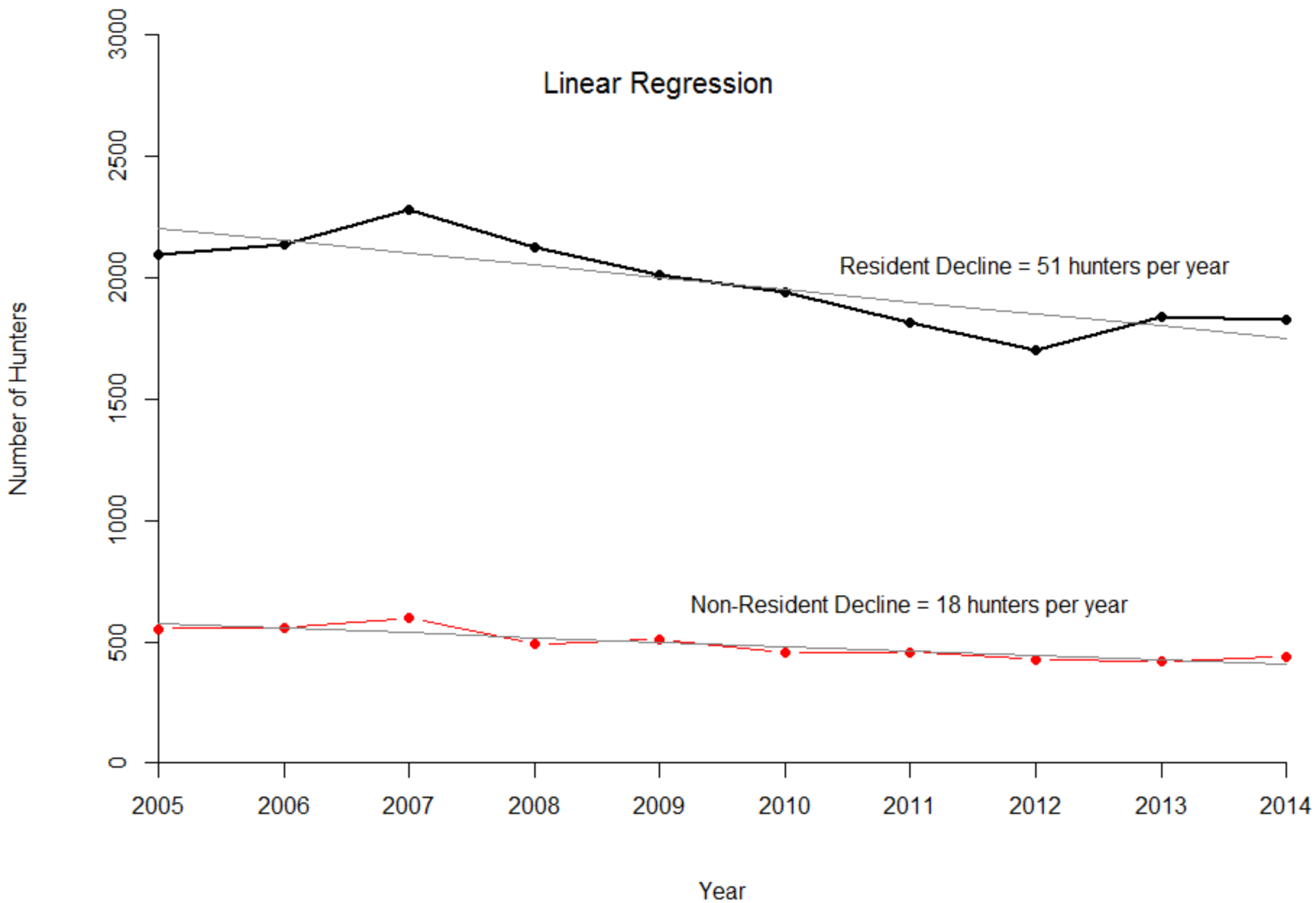
Based on historic trends



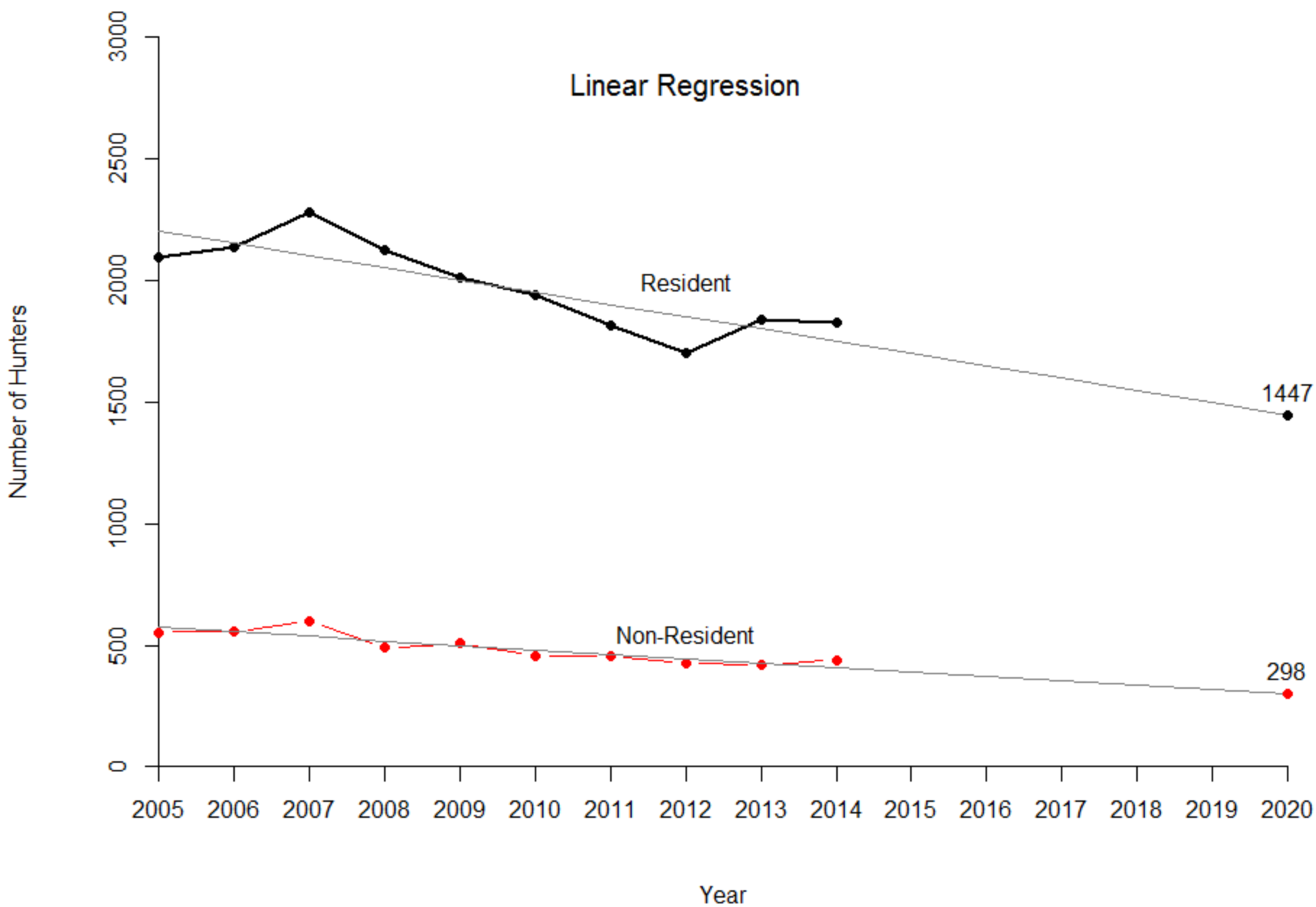
Change in Number of Hunters from 1985 to 2014



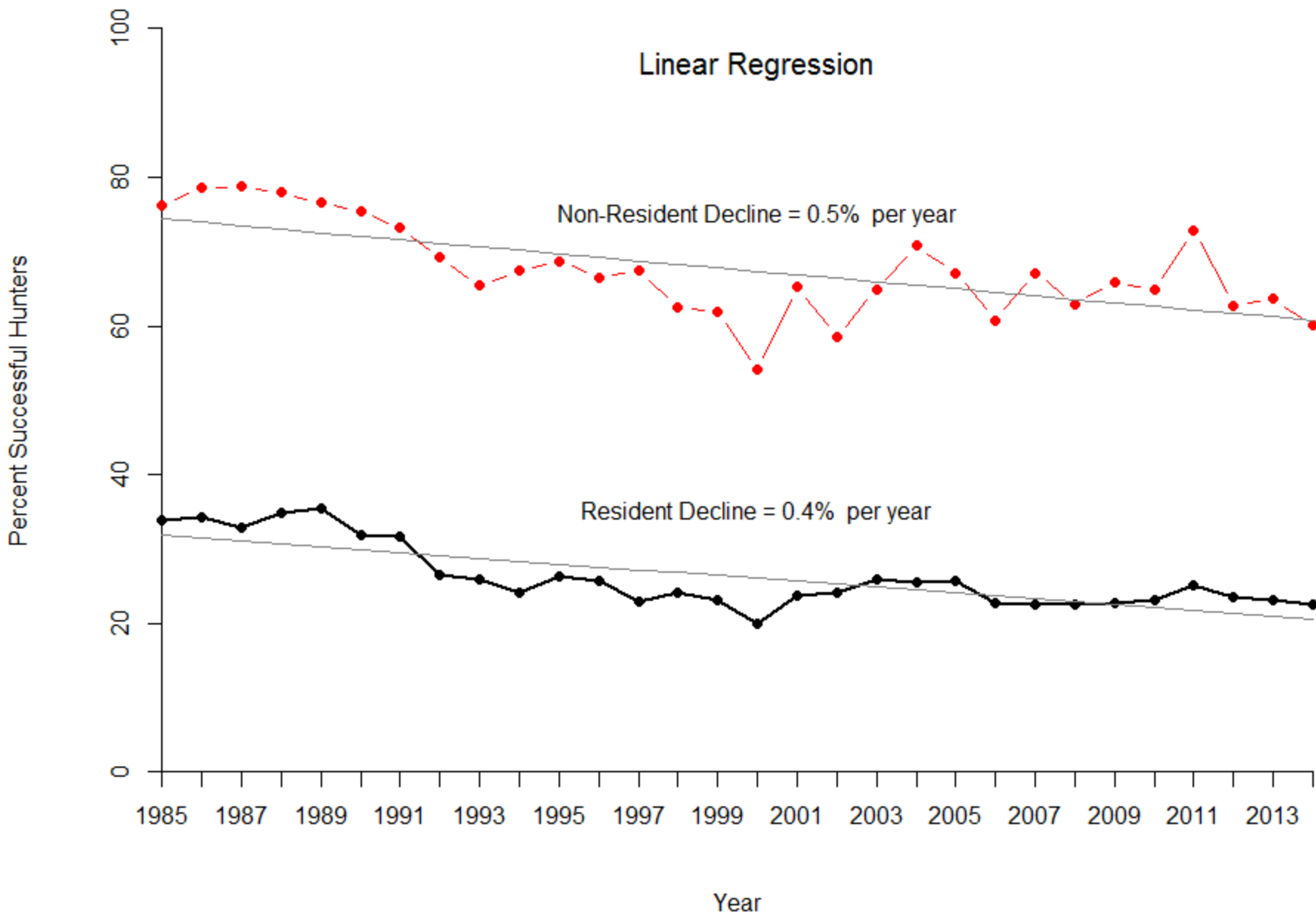
Change in Number of Hunters from 2005 to 2014



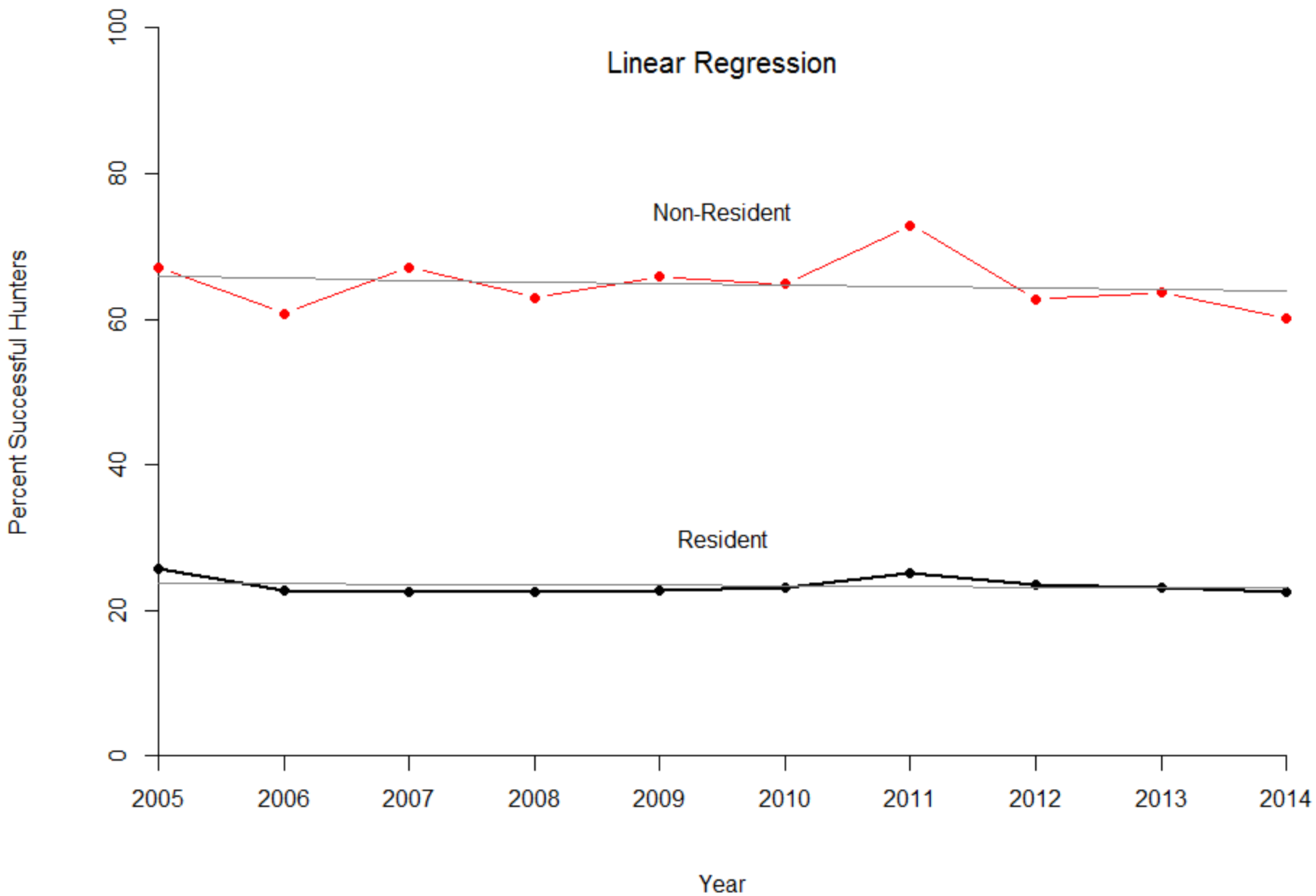
Change in Number of Hunters from 2005 to 2020



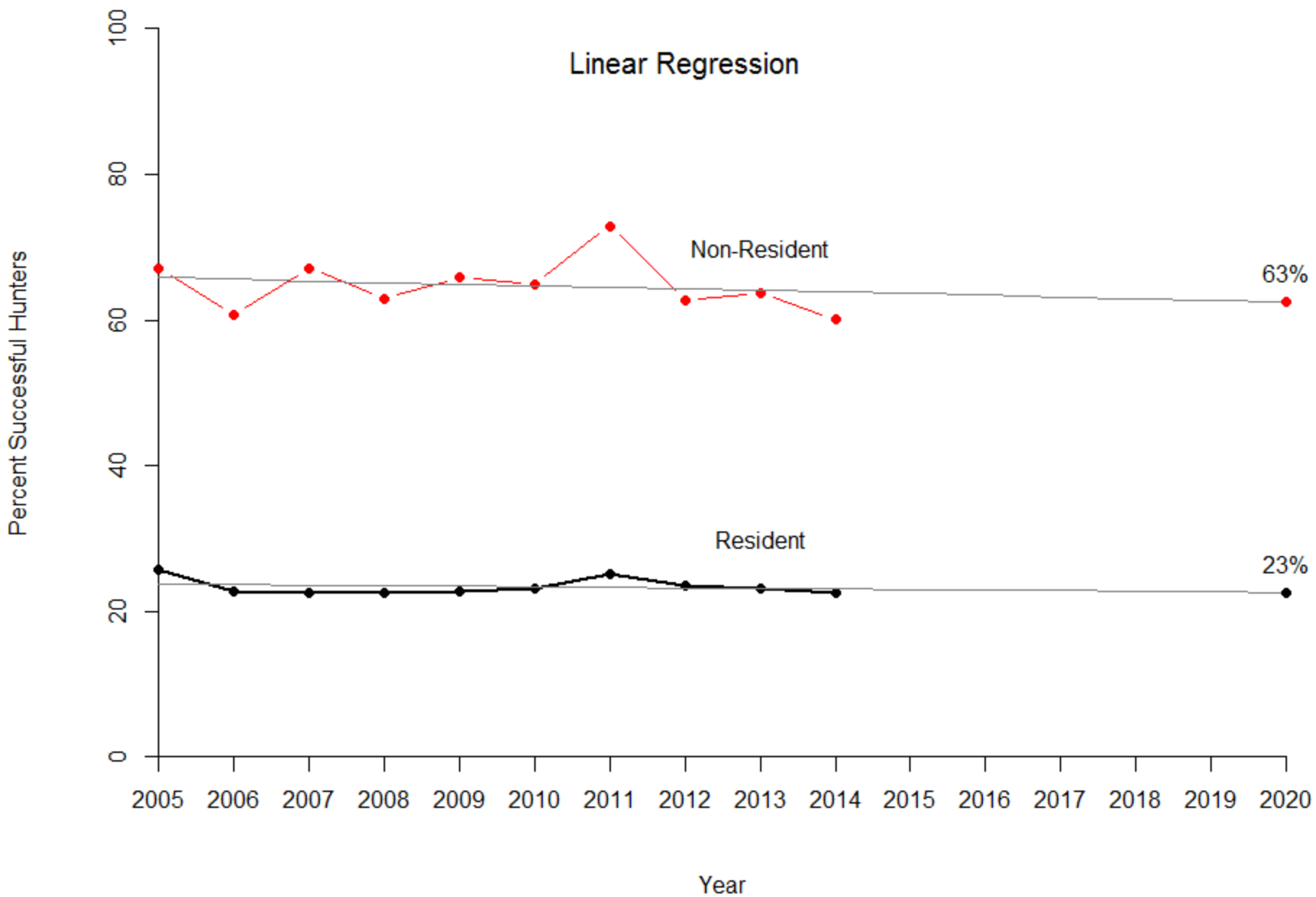
Change in Hunter Success 1985 to 2014



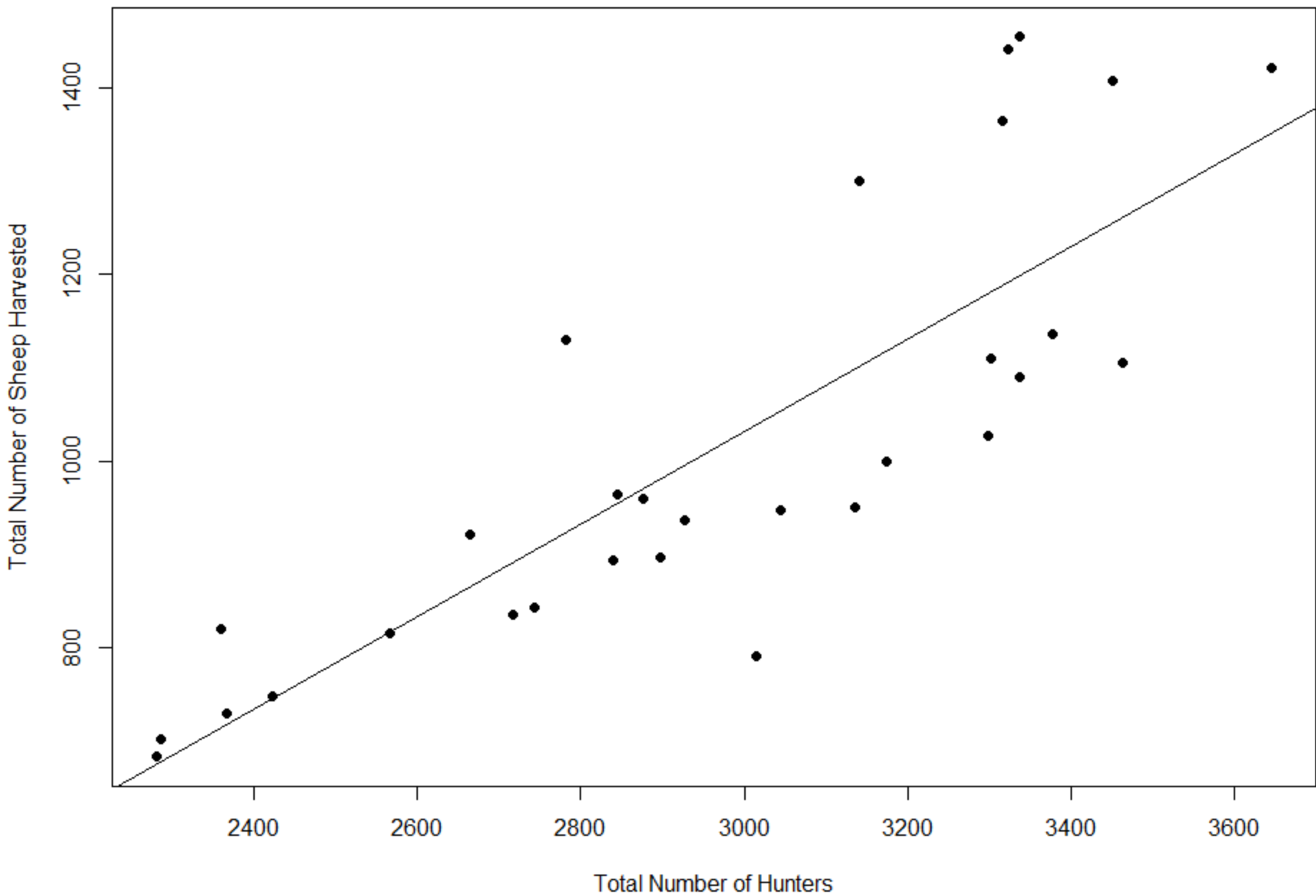
Change in Hunter Success from 2005 to 2014



Change in Hunter Success from 2005 to 2020



Relationship Between Number of Hunters and Number of Sheep Harvested



END SLIDE SHOW