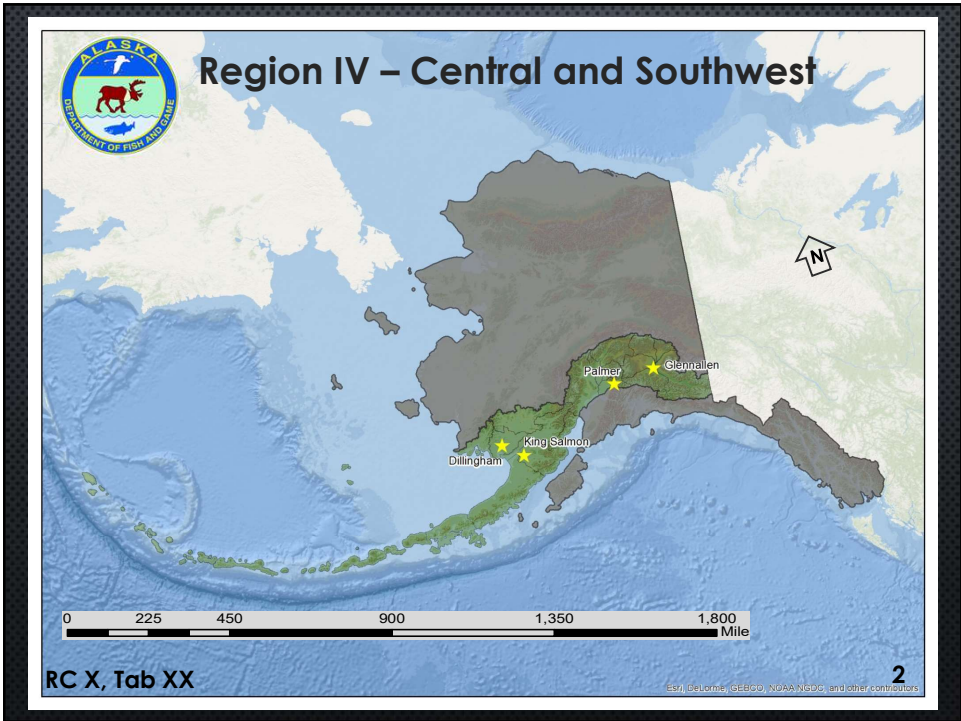
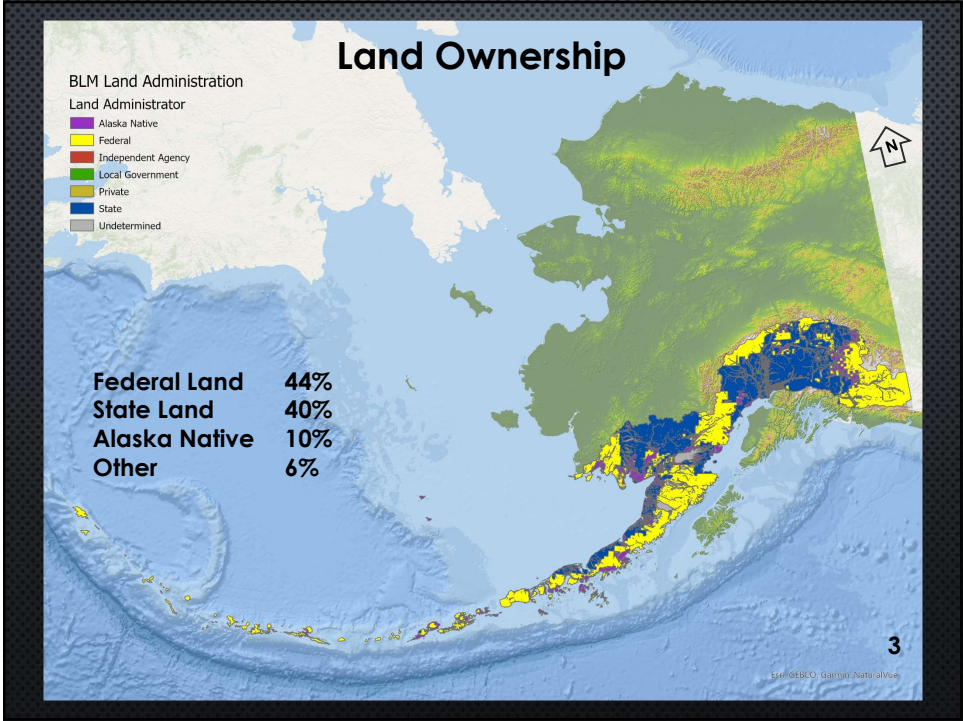




1



2



3

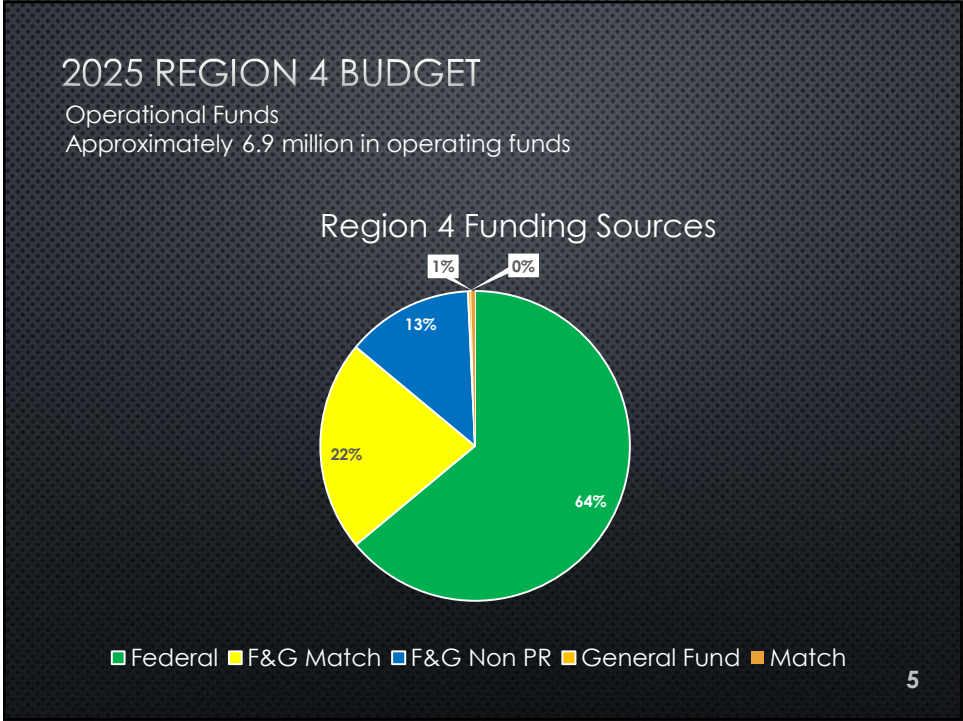
REGIONAL STAFF

- REGIONAL SUPERVISOR TIM PELTIER
- MGMT. COORDINATOR TODD RINALDI
- RESEARCH COORDINATOR KRISTIN DENRYTER, PHD
- ASST. MGMT. COORDINATOR MANNY EICHHOLZ

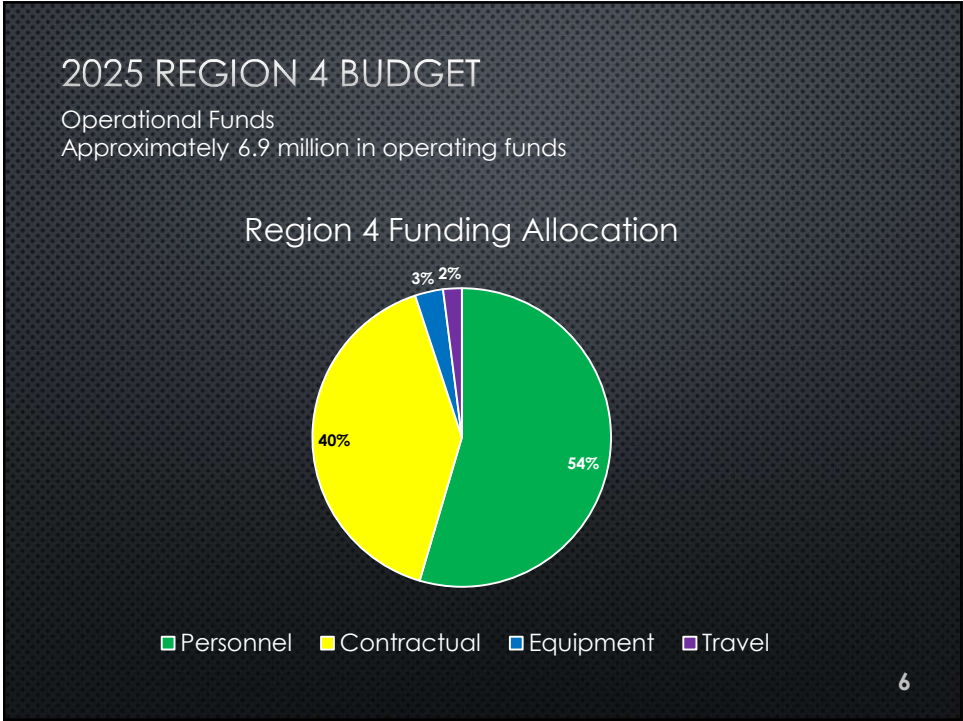
- ADMINISTRATIVE STAFF JENETTE MATLOCK
- CORIE SHOOK
- DANA LIPSE

4

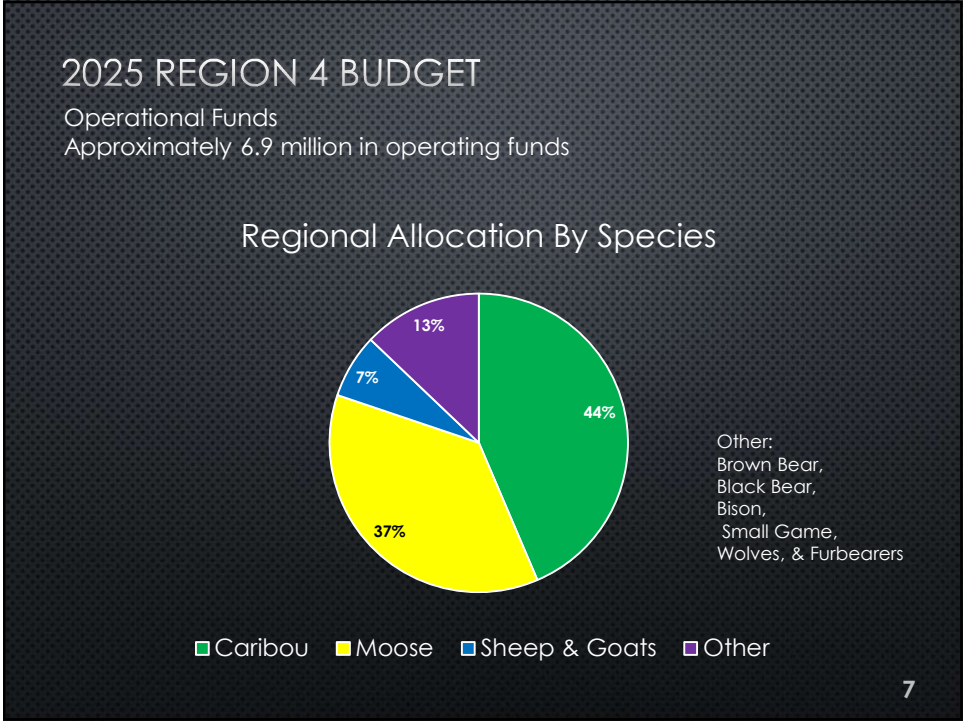
4



5



6



7

CUSTOMER SERVICE

- 62 DRAWING PERMIT HUNTS (7 SPECIES)
- 8 SUBSISTENCE PERMIT HUNTS
 - 2 COMMUNITY SUBSISTENCE HUNTS
 - 2 TIER I SUBSISTENCE HUNTS
 - 4 TIER II SUBSISTENCE HUNTS
- 29 REGISTRATION PERMIT HUNTS
- 1 "TARGETED" PERMIT HUNT

8

8

Research and Management Activities



- Wildlife Surveys
 - GSPE
 - Line Transect
 - Trend Count
 - Minimum Counts
- Wildlife-Human Conflicts
 - Nuisance & Orphan
 - Attractants
 - Wildlife Safety
- Public Outreach
 - AC Meetings
 - Community Councils
 - Hunt Administration
 - Inter and Intra Agency Meetings
- Research
 - Population Trends
 - Nutrition
 - Disease
 - Calf Survival & Recruitment
 - Browse Surveys

9

9

CHALLENGES

- STAFF TURNOVER
- INTENSIVE MANAGEMENT (GMUs 13, 16, AND 17)
- HUMAN POPULATION GROWTH
 - CUSTOMER SERVICE
 - SOCIAL CARRYING CAPACITY
 - HABITAT IMPACTS
 - ACCESS



10

10

REGIONAL DEVELOPMENT PROJECTS

- LITTLE MOUNT SUSITNA WIND PROJECT
- NUYAKUK RIVER HYDROELECTRIC PROJECT
- ALEKNAGIK FIBEROPTIC CABLE
- WEST SUSITNA ACCESS PROJECT
- ALASKA LONG TRAIL
- IZEMBECK ROAD
- PEBBLE MINE

11

11

CHALLENGES AND ACCOMPLISHMENTS

- ❖ **MULCHATNA CARIBOU MANAGEMENT**
- ❖ **NELCHINA CARIBOU MANAGEMENT**
- ❖ **URBAN/SUBURBAN MOOSE MANAGEMENT**

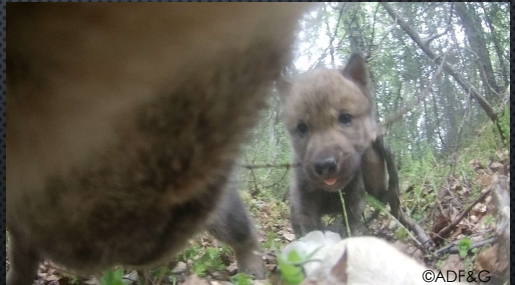


12

12

ACCOMPLISHMENTS

- PUBLICATIONS
- CONFERENCES
- PRESENTATIONS
- SMRP
- TRANSPORTATION FAIR
- STATE FAIR
- WOLF CAMERAS



13

13

REGIONAL RESEARCH STAFF

- RESEARCH COORDINATOR DR. KRISTIN DENRYTER
- WILDLIFE PHYSIOLOGIST VACANT
- CARNIVORE RESEARCH BIOLOGIST VACANT
- UNGULATE RESEARCH BIOLOGIST VACANT
- REGIONAL RESEARCH BIOLOGIST KASSIDY COLSON
- BIOMETRICIAN MEGUMI INOKUMA



Kristin and Leia

14

14

FORAGING ECOLOGY AND WILDLIFE NUTRITIONAL ANALYSIS LAB



FaWNA Staff

- Wildlife Physiologist Vacant
- Wildlife Biologist Malia Smith
- Wildlife Biologist Jacob Pryor
- F&W Tech Kaya Davis

STATEWIDE PROGRAMS AND STAFF IN PALMER

- HQ (ASSISTANT DIRECTOR) MARK BURCH
- SPECIAL AREAS HEATHER LANGENDORF
- REGULATIONS NATALIE WEBER
- REGULATIONS ASSISTANT TARA MOSKIEWICZ
- PROGRAM COORDINATOR FOR EDUCATION SIERRA DOHERTY
- EDUCATION ASSOCIATE BURL DICKMAN

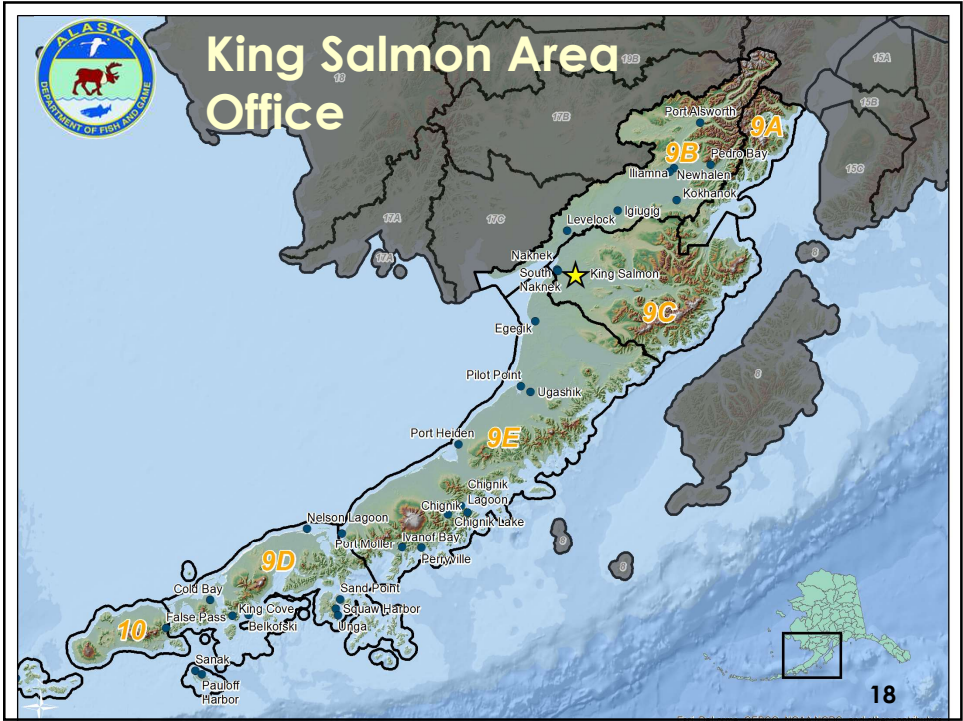
REFUGES, SANCTUARIES, CRITICAL HABITAT AREAS, & RANGES

- HOME TO NUMEROUS SPECIAL AREAS
 - 5 OF THE 12 STATE GAME REFUGES
 - 7 OF THE 14 CRITICAL HABITAT AREAS
 - 2 OF THE 3 SANCTUARIES
 - 1 OF 2 STATE RANGES

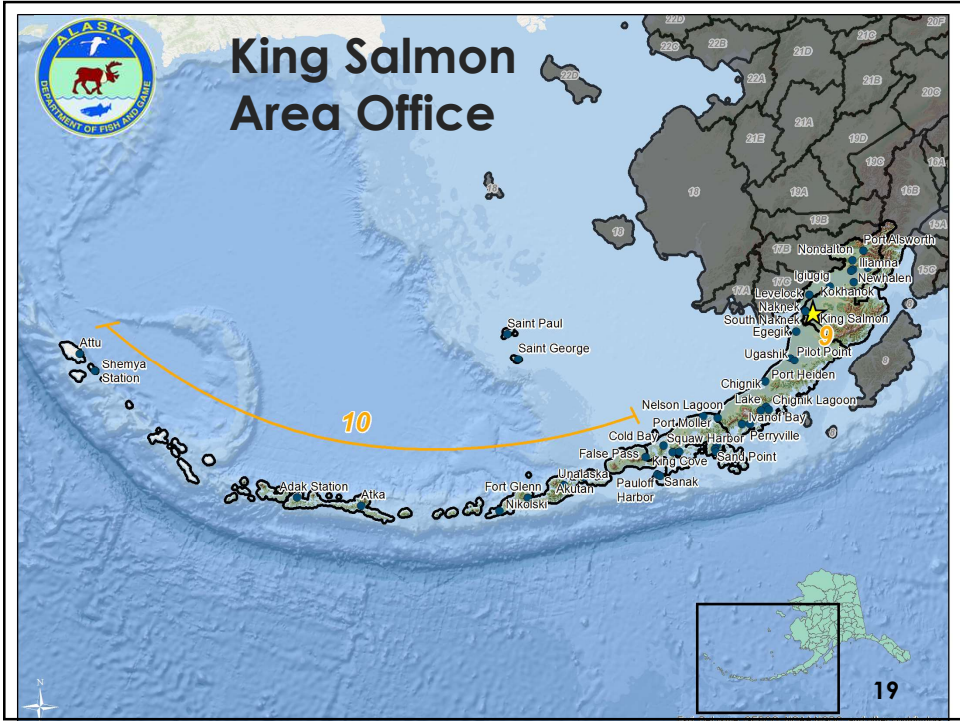
Palmer Hay Flats State Game Refuge

17

17



18



19

KING SALMON AREA OFFICE STAFF

- AREA BIOLOGIST AMY VANDE VOORT
- ASSISTANT AB EVELYN LICHWA
- INFORMATION CENTER MICHAEL HEVEZI

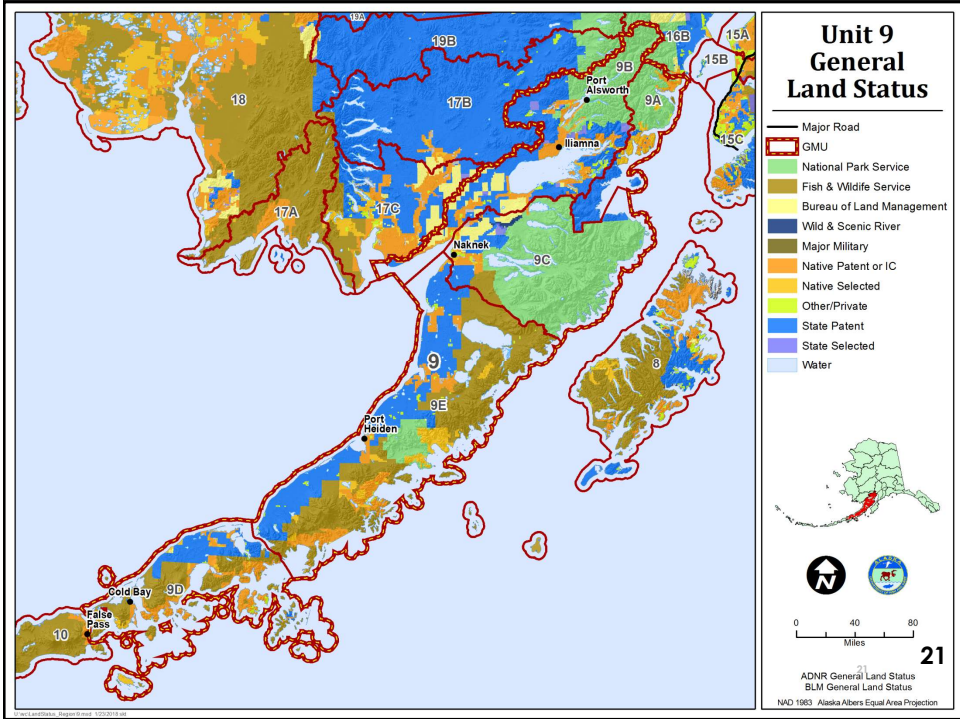


Amy

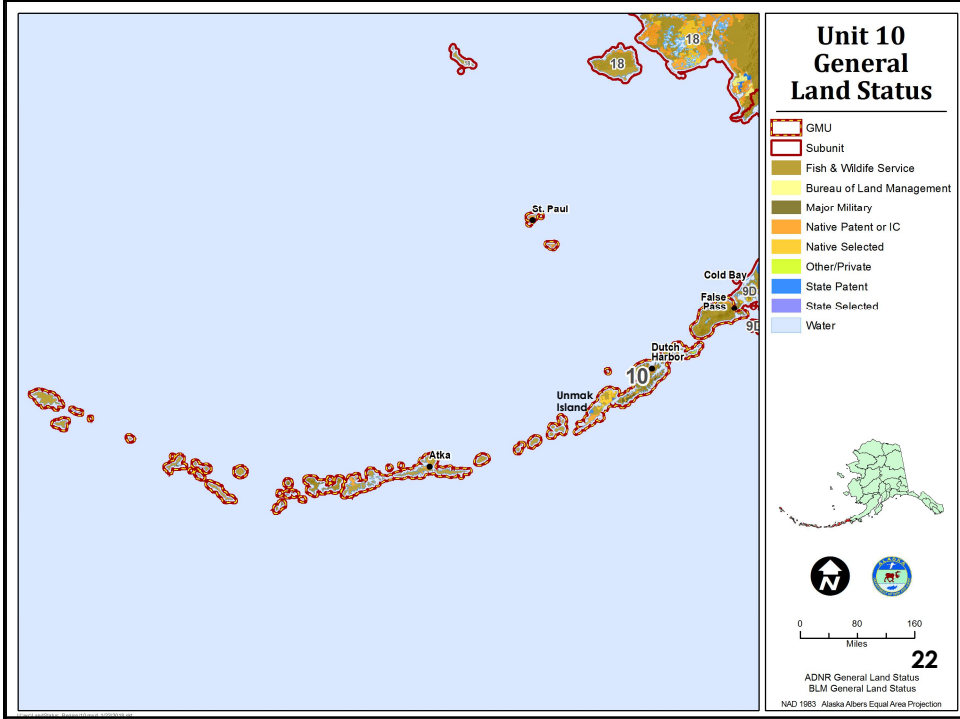
20 King Salmon Area Proposals

20

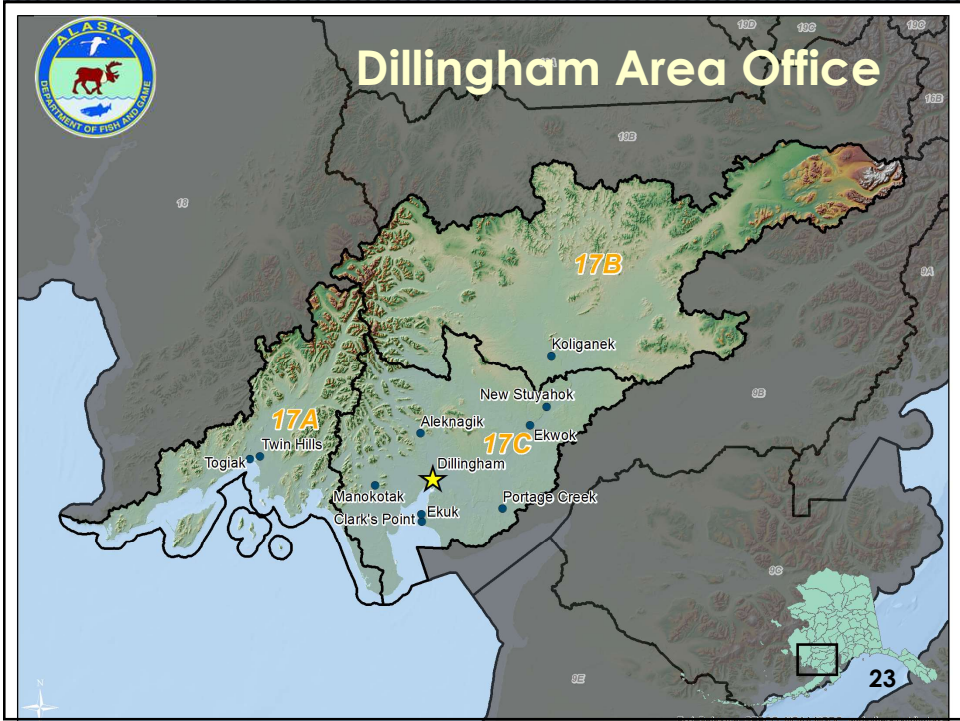
20



21



22



23

DILLINGHAM AREA OFFICE STAFF

- AREA BIOLOGIST JOHN LANDSIEDEL
- ASSISTANT AB EVELYN LICHWA
- INFORMATION CENTER EUNICE DYASUK

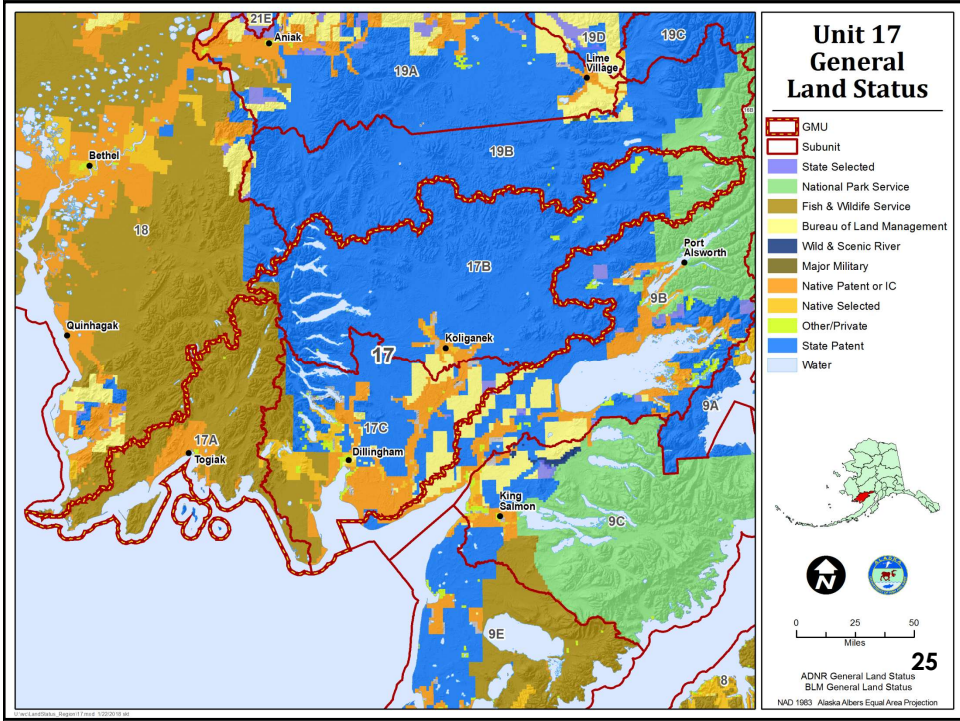


John with a friend

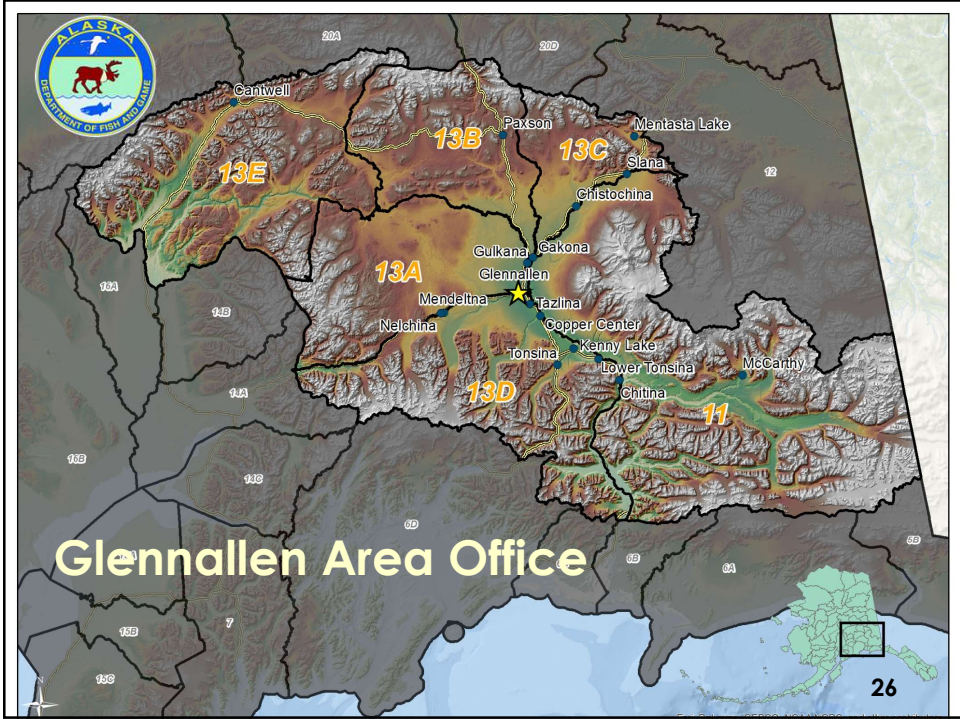
15 Dillingham Area Proposals

24

24



25



26

GLENNALLEN AREA OFFICE STAFF

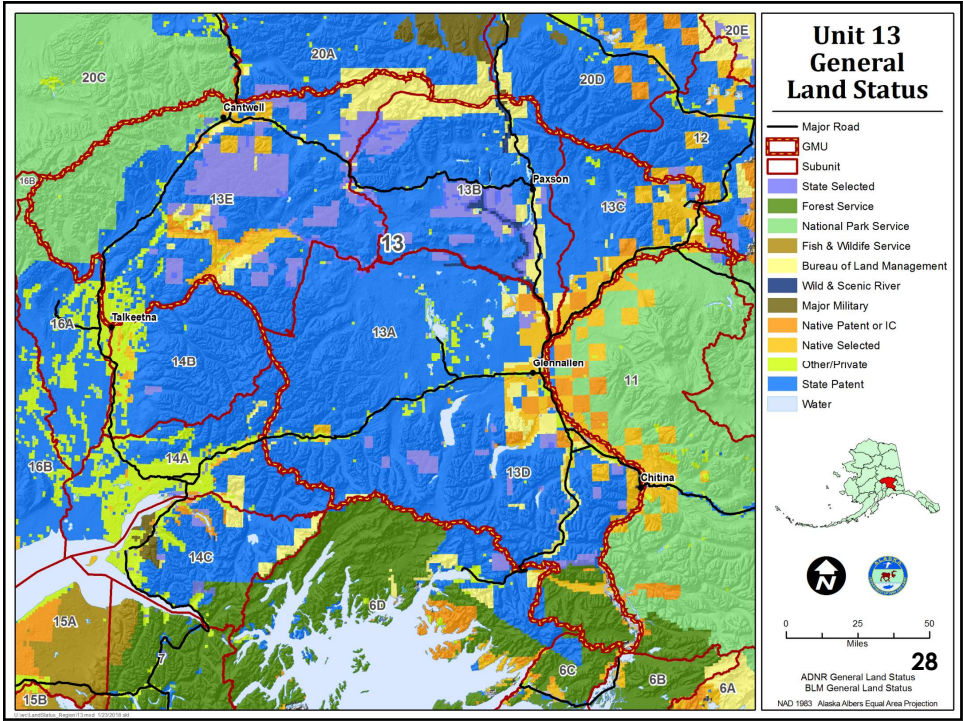
- AREA BIOLOGIST HEIDI HATCHER
- ASSISTANT AB JACK CORNISH
- WILDLIFE TECHNICIAN VACANT
- PROGRAM TECH JOHN PAUL

24 GLENNALLEN AREA PROPOSALS

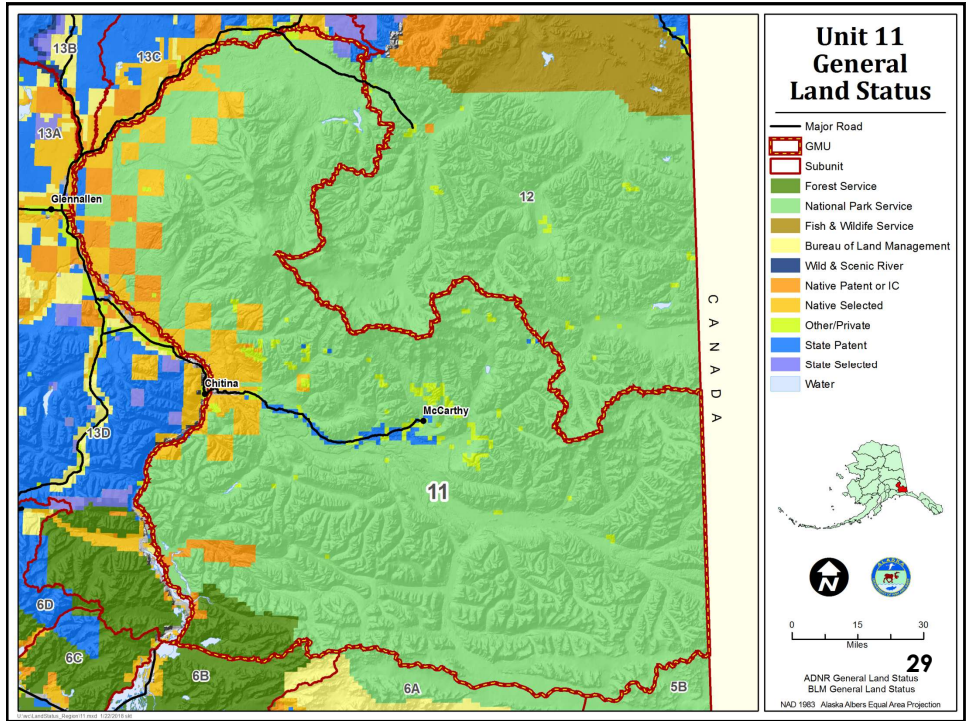


Heidi catch and release bison hunting

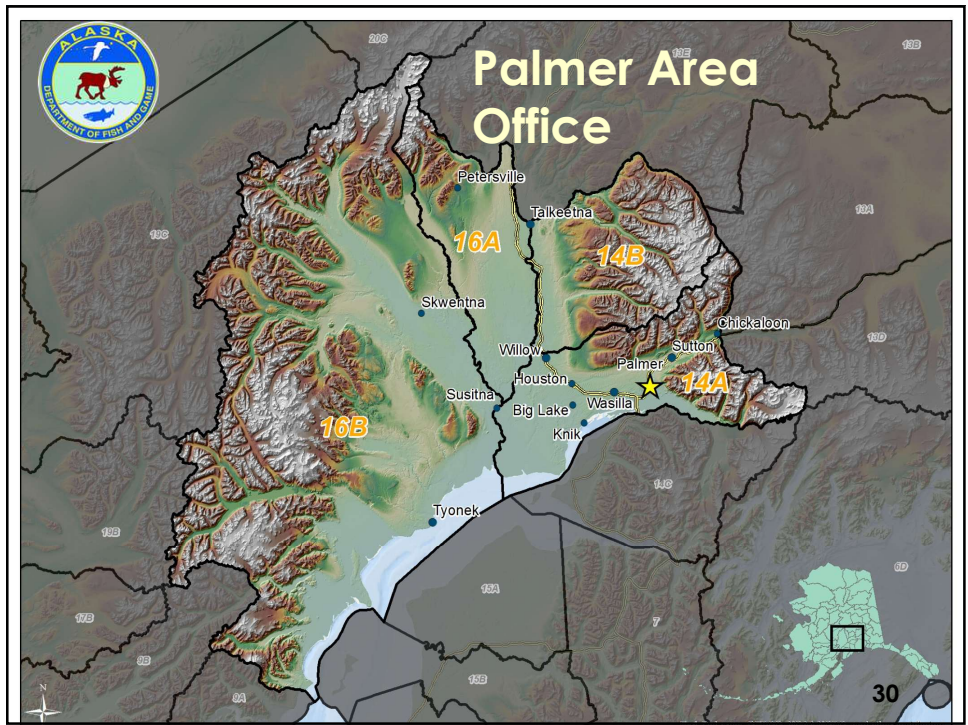
27



28



29



30

PALMER AREA OFFICE STAFF

- AREA BIOLOGIST CHRIS BROCKMAN
- ASSISTANT AB GERRIT VAN DIEST
- REGIONAL BIOLOGIST I KEELEY WALL



Chris with a friend

- INFORMATION CENTER
- FRONT LINE SUPERVISOR WILL NEWBERRY
- F&W TECHNICIAN AMY BAXTER
- F&W TECHNICIAN TRISTA SIMS
- F&W TECHNICIAN GRACE WOYTE

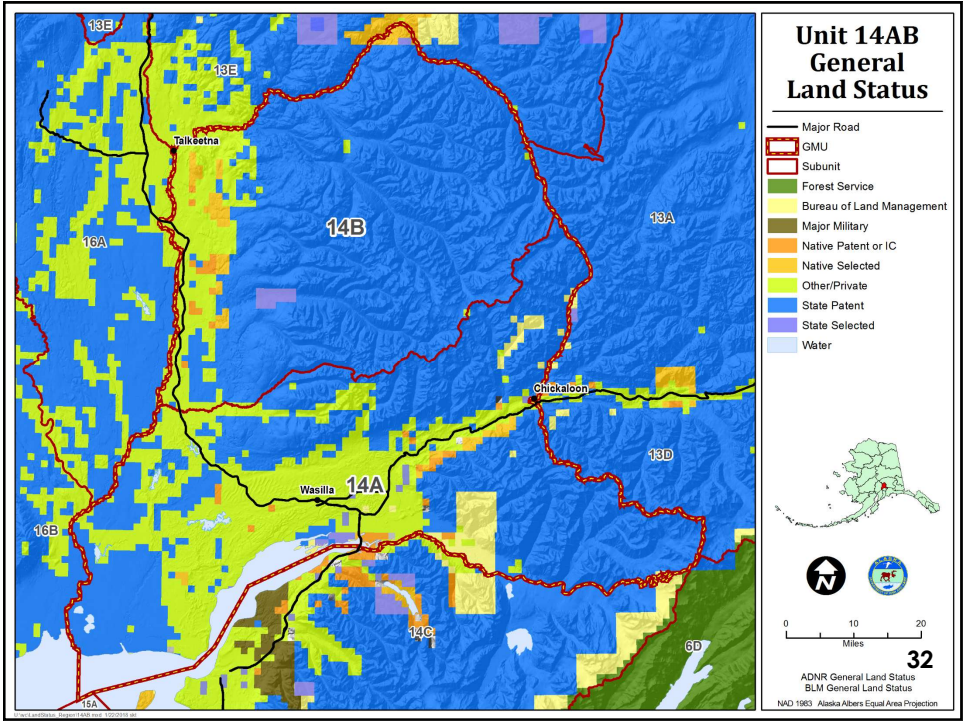


Will with friends

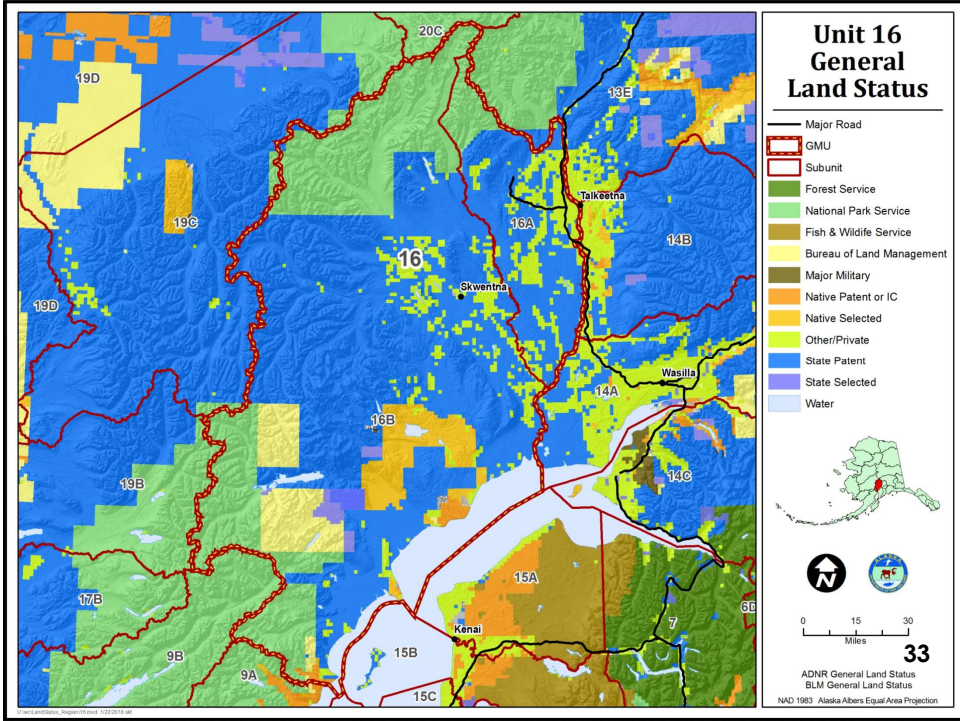
21 PALMER AREA PROPOSALS

31

31



32



33

Considerations

- Staff turnover
- Recruitment and Retention
- Staffing vs. workload
- Balancing IM needs
- Consistency in regulations
- Temporary vs. long term population declines

34

34



35