

from Kathy Sarns Irwin, Homer , Alaska: submitted before BOG deadline March 3,2023 online

**Recommended Amendment for #147:**

As one of the authors of #147, I conferred with the other individual author and propose the following recommended amendment to #147:

Please REMOVE the word “Snomad” from Proposal #147 and REPLACE “Snomad” with the names of 4 snowmobile/multi-use public mapped trails south of Caribou lake.

- 1. McNeil Canyon Trail
- 2. Eagle Lake/Caribou Lake Trail
- 3. Mathews Hill Trail
- 4. Watermelon Trail.

The suggested revised language for amended #147 is on a separate PDF attached.

Reason for suggested amendment for #147: the Snomads Inc non profit club asked the authors of #147 to remove the word Snomad from proposal #147. When proposal #147 was endorsed by Homer AC vote 10-2 in April 2022, “Snomad trails” was chosen at the Homer AC meeting because the term “Snomad Trails” is commonly used by Homer residents in reference to the mapped snowmobile/multi-use public trails that are part of Alaska DNR Snowmobile/multi-use Trail Grant Program in South Caribou Hills. We now understand Snomads concern that the word “Snomad” in proposal #147 (inadvertently) implies that Snomads Inc non profit helped create proposal #147, even though they are not the authors of #147. Snomads Inc non profit maintains these trails and pointed out that calling them Snomad trails is incorrect and instead suggested using the trails' proper names. In the spirit of cooperation and for better clarification, we request to remove the word Snomad from the language in #147 and replace it with the specific names of 4 popular mapped multi-use trails south of Caribou Lake: 1. McNeil Canyon Trail, 2. Eagle Lake/Caribou Lake Trail, 3. Mathews Hill Trail, 4. Watermelon Trail.

**RECOMMENDED AMENDMENT LANGUAGE FOR #147 (BY THE INDIVIDUAL AUTHORS OF #147) SUGGESTED REVISED WORDING:**

PROPOSAL 147

**5 AAC 92.550. Areas closed to trapping.**

Establish trapping setbacks along certain snow machine/multi-use trails and nordic ski trails in Unit 15C as follows:

We recommend no trapping within 100 yards from 4 public mapped snow-machine/multi-use trails south of Caribou Lake in Unit 15C : 1) McNeil Canyon Trail 2) Eagle Lake/Caribou Lake Trail 3) Mathews Hill Trail 4) Watermelon Trail.

and 100 yards from public mapped Kachemak Nordic Ski Club Trails in Unit 15C.

5 AAC 92.550

(4) Unit 15C

...

**E. within 100 yards from 4 public mapped trails south of Caribou Lake: 1) McNeil Canyon Trail, 2) Eagle Lake/Caribou Lake Trail, 3) Mathews Hill Trail, 4) Watermelon Trail, all in 15(C);**

**F. within 100 yards from public mapped Kachemak Nordic Ski Club Trails in 15(C).**

**What is the issue you would like the board to address and why?**

With a growing population on the lower Kenai Peninsula and an increase in non-consumptive users on multi-use trails, conflict with traditional trapping areas and incidents of pet dogs being caught in traps is becoming more common in Unit 15C.

Local trappers, non-consumptive trail users, and the Homer AC working together propose that: traps set adjacent to public mapped trails in Unit 15C be at least 100 yards from the main trail.

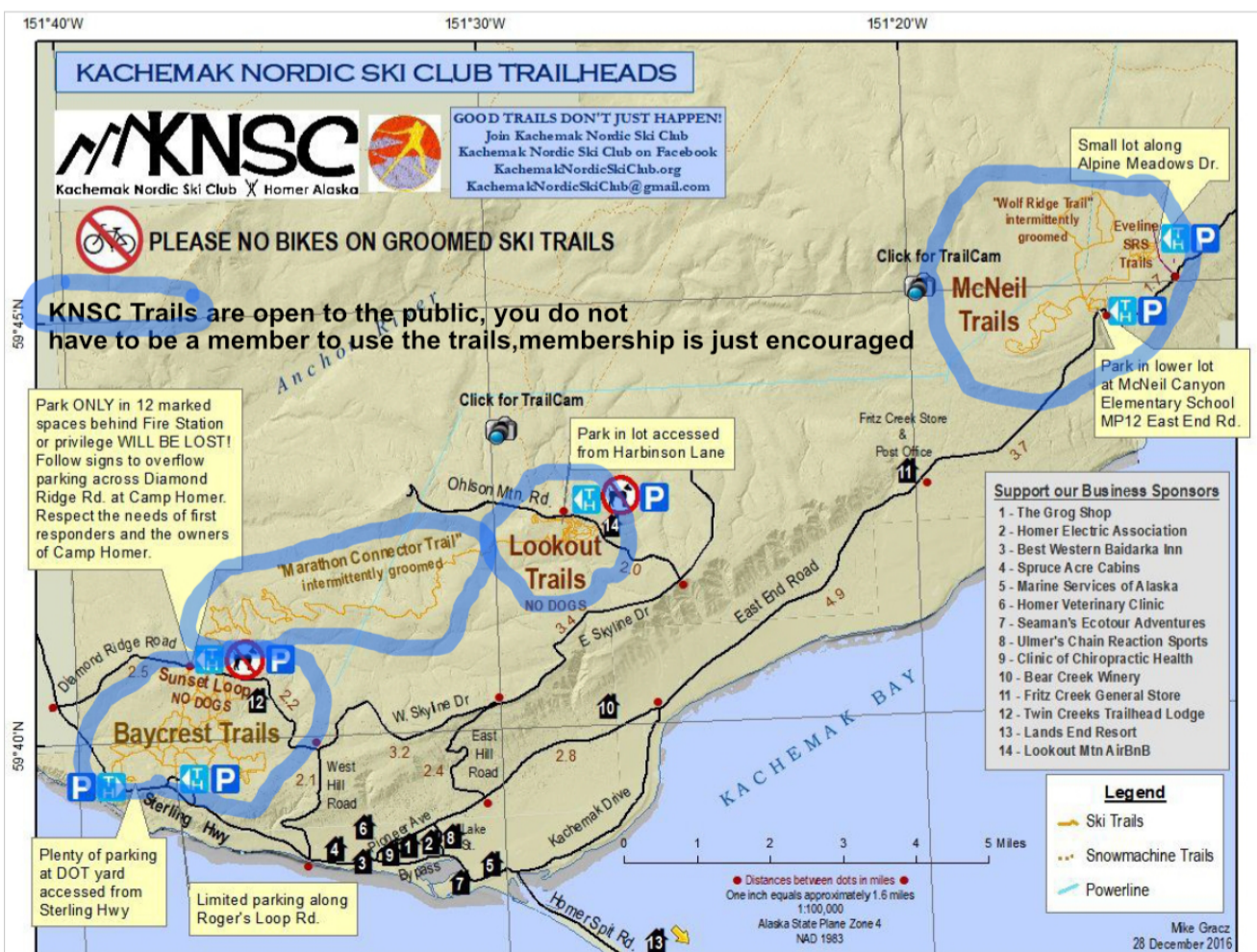
If a 100-yard setback is not implemented, there will be more user conflicts on public trails, as the number of non-consumptive users increases on public trails in winter each year in Unit 15C.

PROPOSED BY: Homer Fish and Game Advisory Committee, Sid Wolford and Kathy Sarns Irwin  
(EG-F22-048)

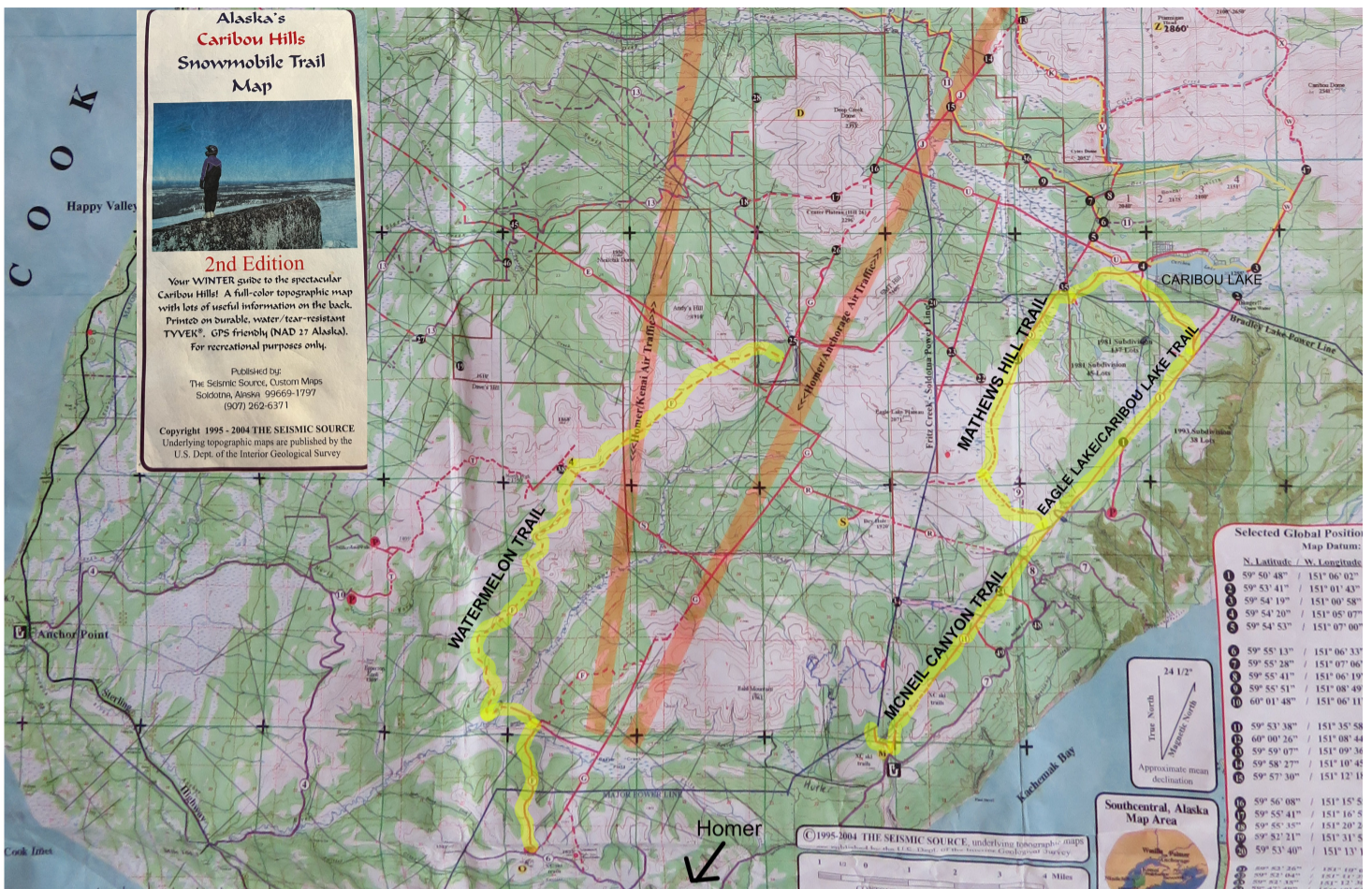
\*\*\*\*\*

THEY ARE WELL MARKED AND GROOMED AND OBVIOUS PUBLIC TRAILS FOR SKIERS:  
 More detailed maps of each area also attached below

#147 MAP2 OF public multi-use trails south of Caribou Lake: 1. McNeil Canyon Trail, 2. Eagle Lake/Caribou Lake Trail, 3. Mathews Hill Trail, 4. Watermelon Trail:



## I support Proposition #147



If a 100-yard setback is not implemented on the popular public mapped trails in this proposal, there will be more and more user conflicts on these public trails near Homer, as the number of non-consumptive users (local & visiting snowshoers, skiers, snowbikers, hikers, runners, snowmachiners) increases on popular public mapped trails in winter each year in Unit 15C. The trails suggested for the 100 yd setback in prop #147 are mapped public trails and are available to the public online and to purchase: Kachemak Nordic Ski Trails Maps, and the 4 most used snowmobile/multi-use trails south of Caribou lake: McNeil Canyon Trail, Eagle Lake/Caribou Lake Trail, Mathews Hill Trail, Watermelon Trail. The 100 yard setback was proposed by trappers when we met last April 2022 to find a workable solution to the growing problem of pets getting caught in traps on popular trails near Homer. This is a reasonable guideline that allows the trappers to trap and at the same time allows the increased number of other trail users to pass without conflict along these popular public mapped trails. It gives a guideline for everyone, so both trappers and other users know what to expect on certain popular mapped trails in winter. I was with a group of skiers last spring and 2 different dogs were trapped along the Watermelon trail that day. It was a terrible experience for all involved. It would have been prevented if the traps were 100 yards away from this popular multi-use trail, since that is far enough away that a dog will most likely not smell the trap bait scent. These dogs were traveling along the trail with their owners and when they smelled the trap bait right alongside the trail, they veered off just a little to inspect the smell and were caught in the traps. If the traps had been 100 yd away from this popular multi-use trail this would not have happened. Recently at least 8 dogs have been caught in traps in the Homer outer area on these popular mapped trails including 3 dogs caught along the KNCS groomed ski trails that are marked as "dog friendly" ski trails. This proposal only includes the most popular mapped trails used by many Homer families and visitors. There are miles of other trails not listed on this proposal that trappers can use without a setback. Please support Proposal #147 to help prevent user conflicts with the increasing numbers of non-consumptive trail users on these most popular public mapped trails as indicated in proposal #147.

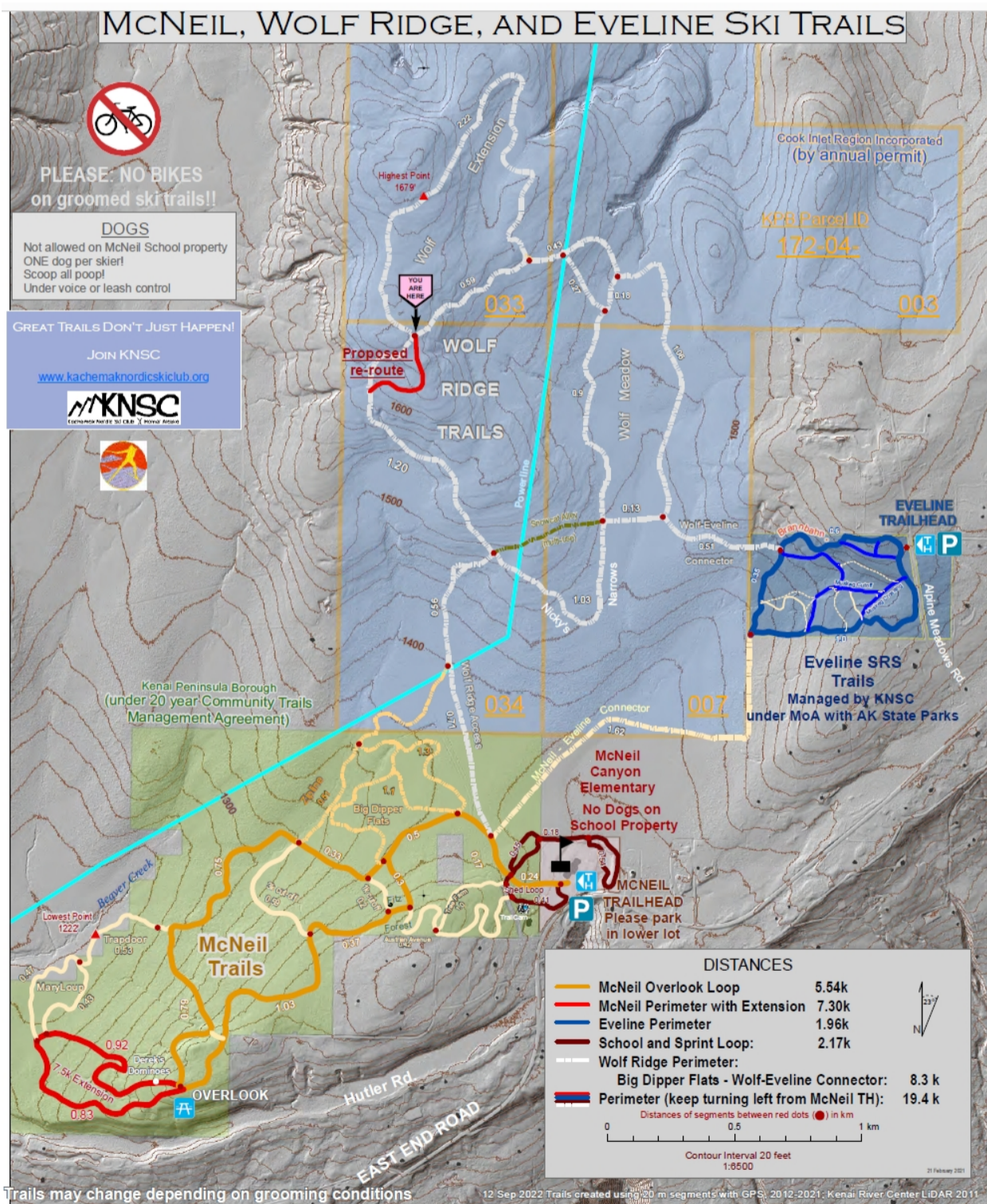
Kathy Sarns Irwin  
 Homer Alaska

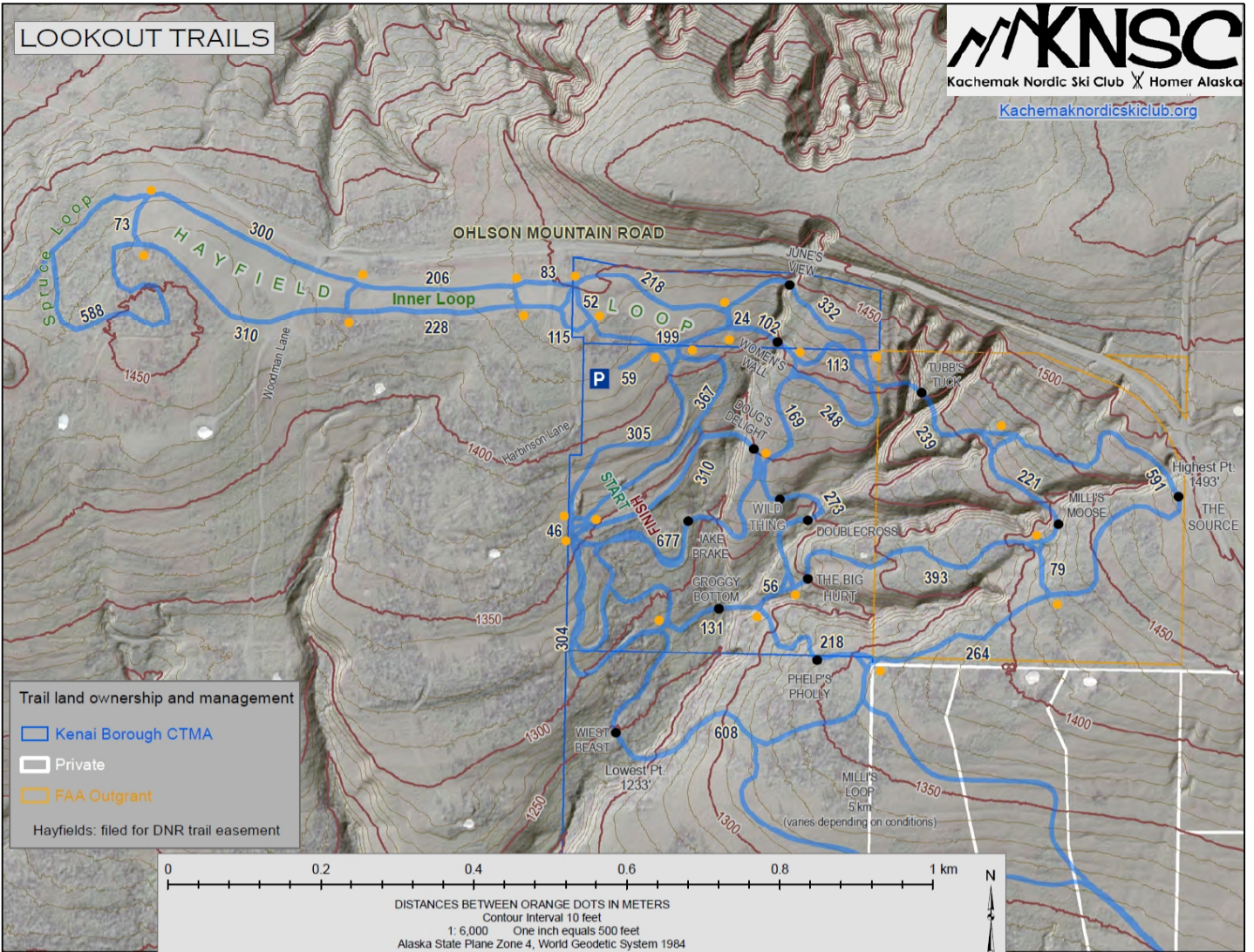
## I support Propositions #146

Every winter 100s of families travel across Kachemak Bay by water taxi to skate on or to visit Grewingk Lake (in Kachemak Bay State Park). Families with pets hike on the Glacier Lake Trail and Saddle trail. Having a 100 yd setback along these 2 popular mapped trails would be a common sense regulation to prevent user conflicts and heartache for winter park visitors. The use of these 2 trails by hikers, skiers, snowshoers is growing every winter. There are many other miles of KBSP trails that are not in this proposal, so this 100 yd setback for only the most popular trails would not cause an inconvenience for trappers. Also The Diamond Ridge trails on Homer side of the Bay (in Kachemak Bay State park) are used by hundreds of local Homer and visiting cyclists, runners, snowshoers, & runners, with dogs by their side. Please support Proposal #146 for 100yd setbacks to prevent conflicts with the the growing number of multi-use trail users on these 3 most popular public mapped trails in Kachemak Bay State Park.

Kathy Sarns Irwin  
Homer Alaska

**Prop #147 DETAILED MAPS of 4 areas from Kachemak Nordic Ski Trails area map:**





**SUNSET LOOP:** 2.72 km  
**HOMESTEAD LOOP:** 5.10 km  
**PERIMETER TRAIL:** 16.65 km  
 (from Rogers Loop TH through Headwaters, up Farside, around Sunset, return via Woodcutters / Raven's)

**Headwaters Hwy:** 3.36 km  
**Raven's Way:** 2.64 km

0 0.25 0.5 0.75 1 km

DISTANCES BETWEEN ORANGE DOTS IN KILOMETERS  
Contour Interval 10 feet  
1:4,891 One inch equals 408 feet  
Alaska State Plane Zone 4, World Geodetic System 1984

