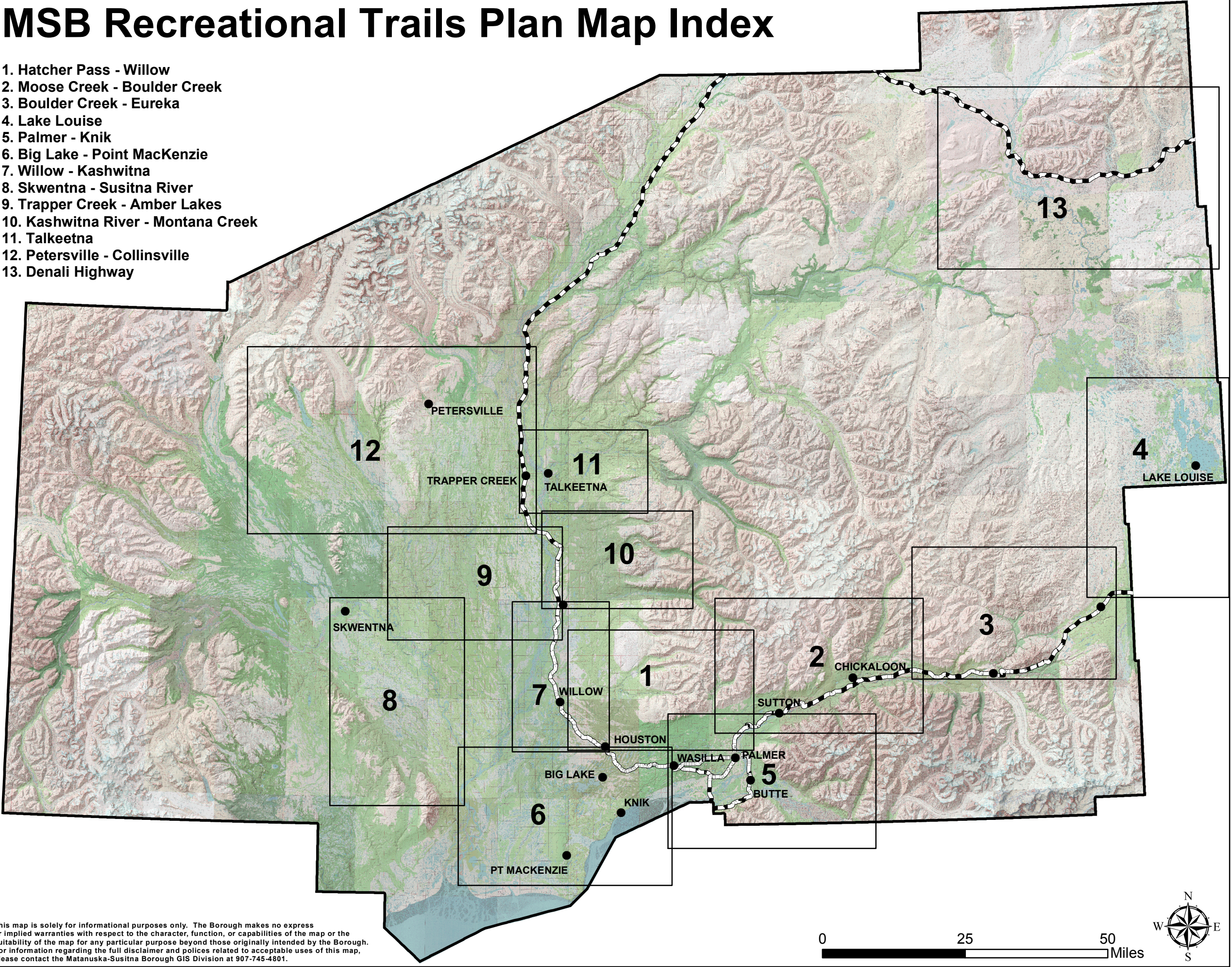


MSB Recreational Trails Plan Map Index

- 1. Hatcher Pass - Willow
- 2. Moose Creek - Boulder Creek
- 3. Boulder Creek - Eureka
- 4. Lake Louise
- 5. Palmer - Knik
- 6. Big Lake - Point MacKenzie
- 7. Willow - Kashwitna
- 8. Skwentna - Susitna River
- 9. Trapper Creek - Amber Lakes
- 10. Kashwitna River - Montana Creek
- 11. Talkeetna
- 12. Petersville - Collinsville
- 13. Denali Highway



This map is solely for informational purposes only. The Borough makes no express or implied warranties with respect to the character, function, or capabilities of the map or the suitability of the map for any particular purpose beyond those originally intended by the Borough. For information regarding the full disclaimer and policies related to acceptable uses of this map, please contact the Matanuska-Susitna Borough GIS Division at 907-745-4801.

This map is solely for informational purposes only. The Borough makes no express or implied warranties with respect to the character, function, or capabilities of the map or the suitability of the map for any particular purpose beyond those originally intended by the Borough. For information regarding the full disclaimer and policies related to acceptable uses of this map, please contact the Matanuska-Susitna Borough GIS Division at 907-745-4801.

MSB Recreational Trails Plan

- Roads
- Over Water Routes
- Primitive Route
- Proposed Trail
- Trails

14. Wasilla Creek Headwaters

15. Moose Creek Branch RR

16. Wishbone Strip Mine

17. Baxter Mine

18. Premier Mine

19. Seventeen Mile Lake

20. Wishbone Lake

26. Matanuska Branch RR

27. Mint Glacier

28. Archangel

29. Reed Lake

30. Glacier Creek

31. Fern Mine

32. Upper Willow Creek

33. Craigie Creek
35. Willow Sled

36. Wet Gulch

37. Purches Creek

38. Canyon Creek

39. Central

40. Talkeetna Mail (Herning)

41. Willow Mountain

42. Mail Trail Connector

49. Houston Lake Loop

73. Elks Lake

82. Wolverine Canyon

90. Brasil Springs

130. Bench Lake

131. Bald Mountain
146. Moorehouse

155. Hessler-Norris Sled Dog

162. Skyline

163. Bear Ridge

183. Emil Stancec

213. Talkeetna Mail-Central Connector

216. Old Government Peak

221. Moose Lick-Government Peak

225. Meadow Lakes Community

241. Visnaw-Little Su

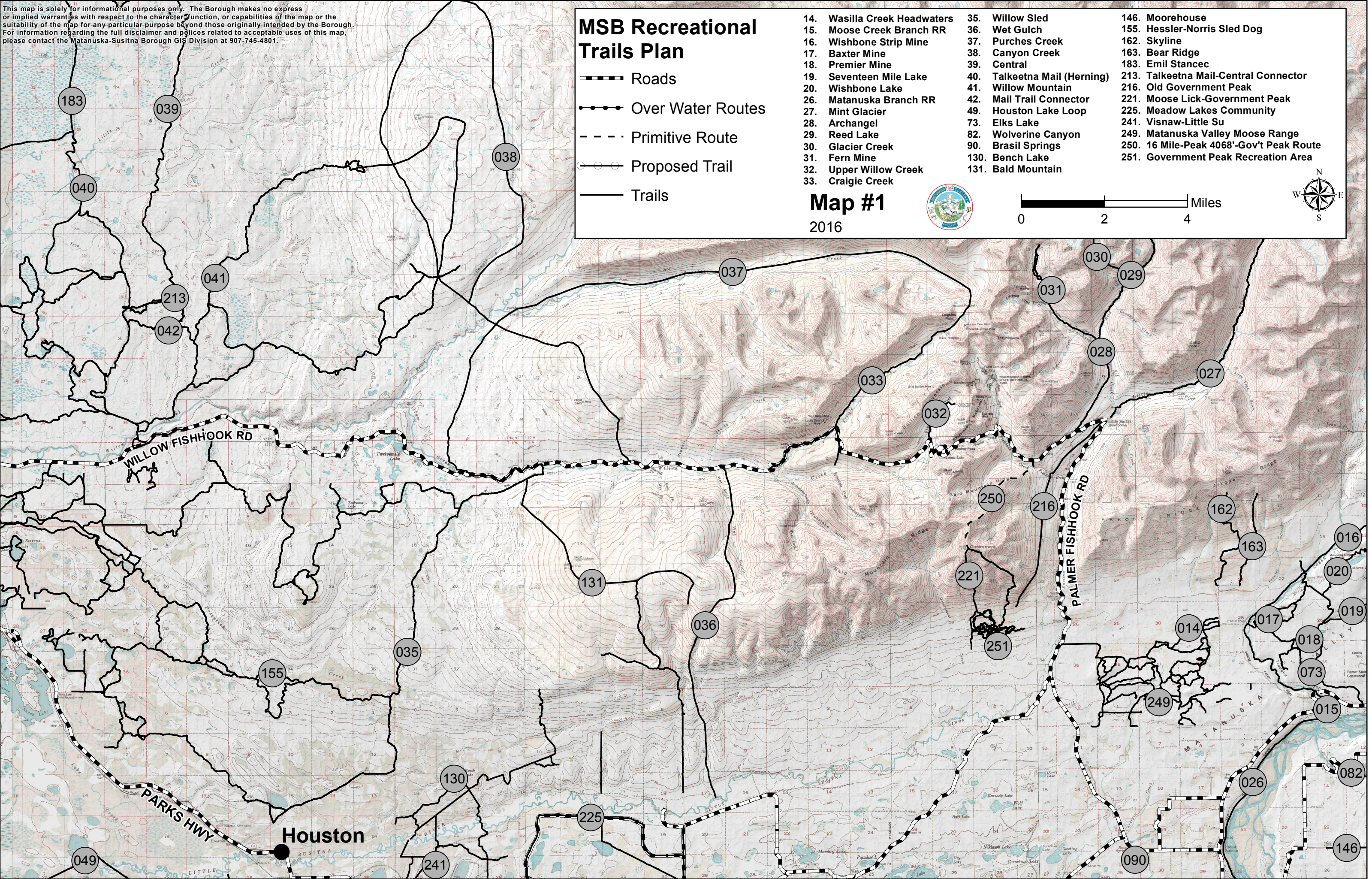
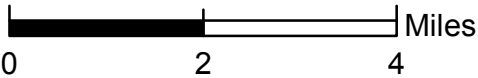
249. Matanuska Valley Moose Range

250. 16 Mile-Peak 4068'-Gov't Peak Route






251. Government Peak Recreation Area

Map #1

2016



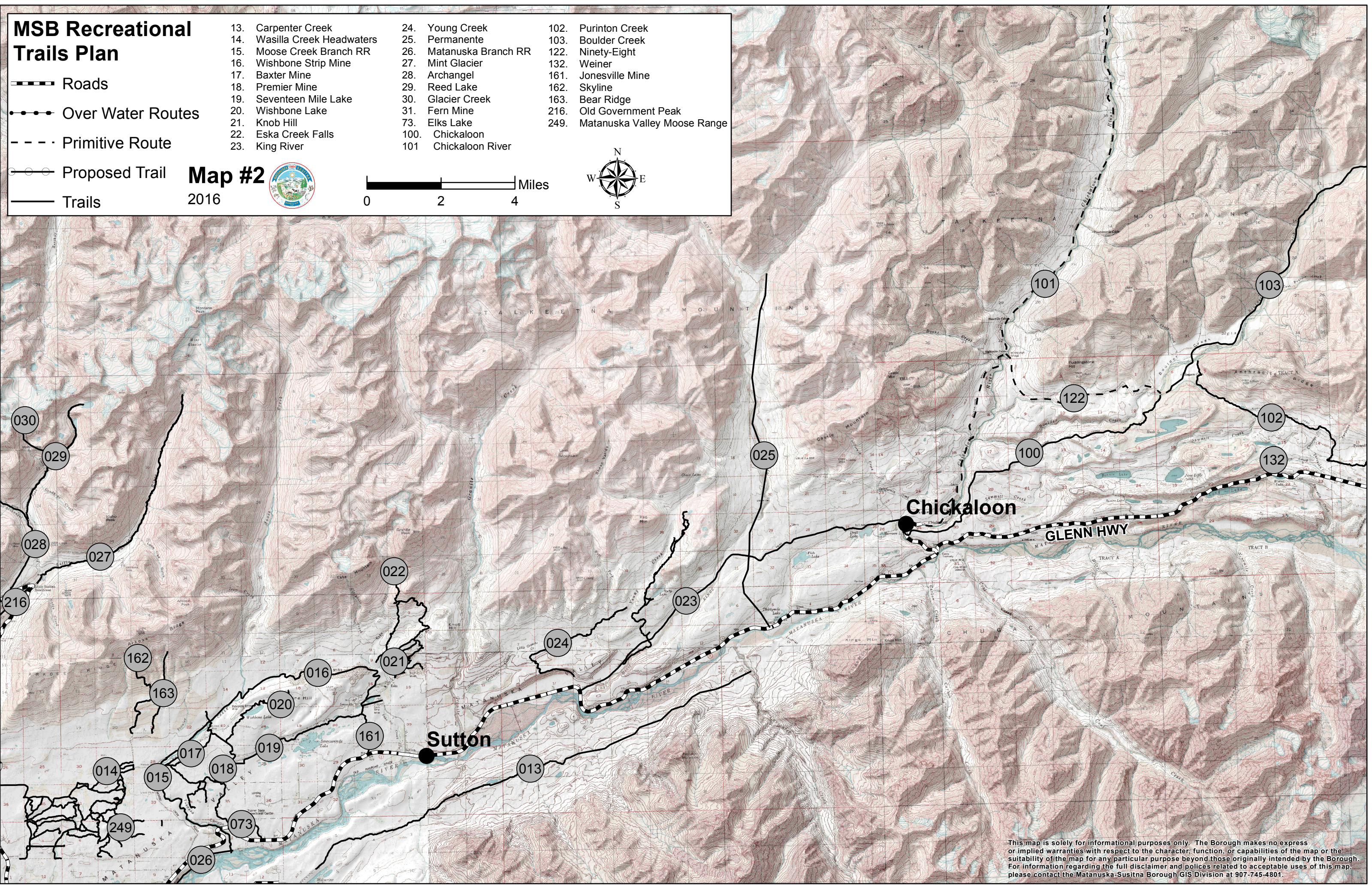
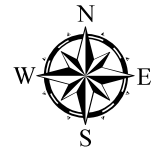
MSB Recreational Trails Plan

-  Roads
 Over Water Routes
 Primitive Route
 Proposed Trail
 Trails

- | | | | | | |
|-----|--------------------------|------|---------------------|------|------------------------------|
| 13. | Carpenter Creek | 24. | Young Creek | 102. | Purinton Creek |
| 14. | Wasilla Creek Headwaters | 25. | Permanente | 103. | Boulder Creek |
| 15. | Moose Creek Branch RR | 26. | Matanuska Branch RR | 122. | Ninety-Eight |
| 16. | Wishbone Strip Mine | 27. | Mint Glacier | 132. | Weiner |
| 17. | Baxter Mine | 28. | Archangel | 161. | Jonesville Mine |
| 18. | Premier Mine | 29. | Reed Lake | 162. | Skyline |
| 19. | Seventeen Mile Lake | 30. | Glacier Creek | 163. | Bear Ridge |
| 20. | Wishbone Lake | 31. | Fern Mine | 216. | Old Government Peak |
| 21. | Knob Hill | 73. | Elks Lake | 249. | Matanuska Valley Moose Range |
| 22. | Eska Creek Falls | 100. | Chickaloon | | |
| 23. | King River | 101. | Chickaloon River | | |
| | | | | | N |

Map #2

2016



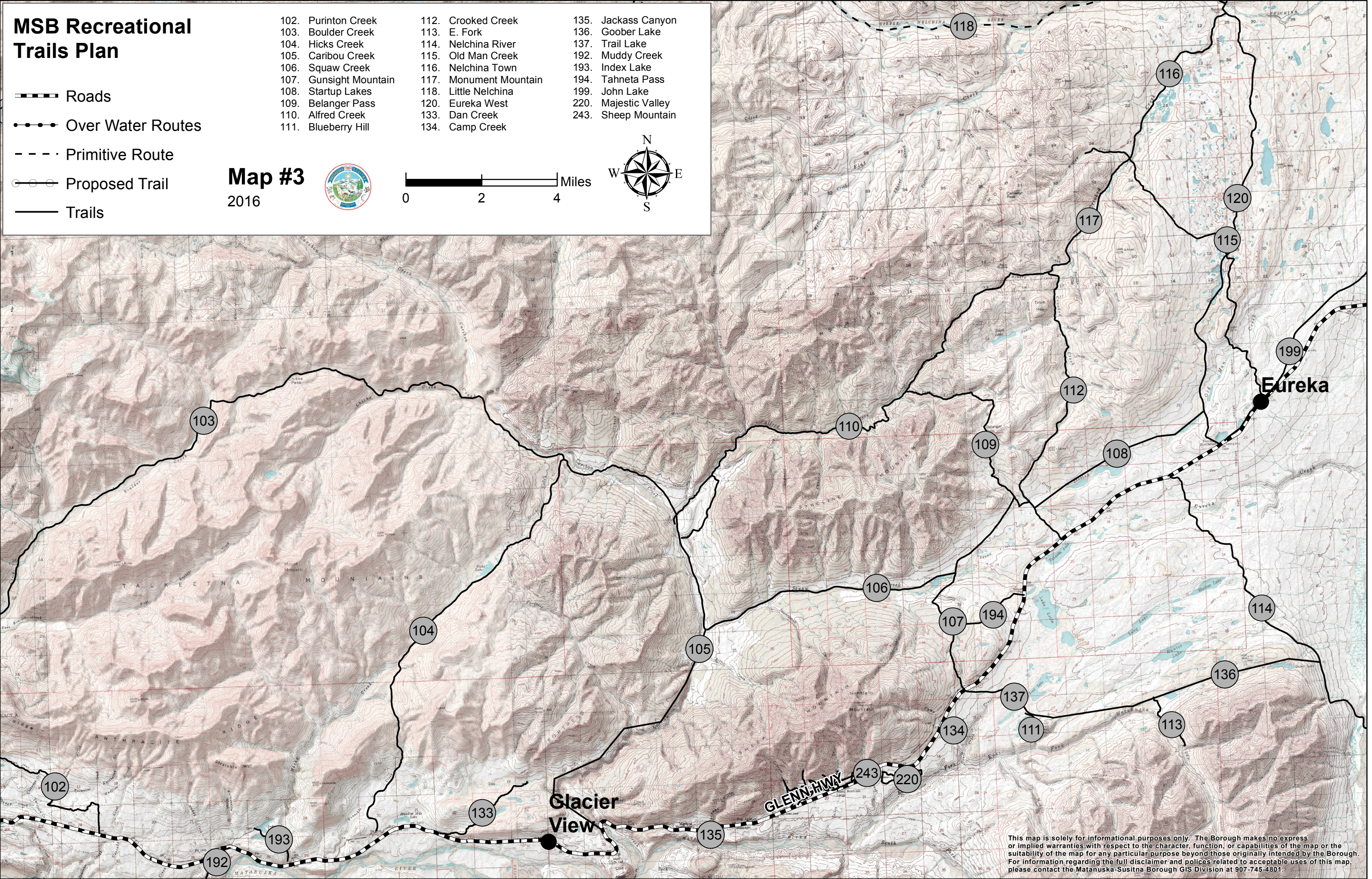
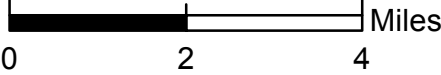
This map is solely for informational purposes only. The Borough makes no express or implied warranties with respect to the character, function, or capabilities of the map or the suitability of the map for any particular purpose beyond those originally intended by the Borough. For information regarding the full disclaimer and policies related to acceptable uses of this map, please contact the Matanuska-Susitna Borough GIS Division at 907-745-4801.

MSB Recreational Trails Plan

- Roads
- Over Water Routes
- Primitive Route
- Proposed Trail
- Trails

- | | | |
|------------------------|------------------------|----------------------|
| 102. Purinton Creek | 112. Crooked Creek | 135. Jackass Canyon |
| 103. Boulder Creek | 113. E. Fork | 136. Goober Lake |
| 104. Hicks Creek | 114. Nelchina River | 137. Trail Lake |
| 105. Caribou Creek | 115. Old Man Creek | 192. Muddy Creek |
| 106. Squaw Creek | 116. Nelchina Town | 193. Index Lake |
| 107. Gunsight Mountain | 117. Monument Mountain | 194. Tahnetta Pass |
| 108. Startup Lakes | 118. Little Nelchina | 199. John Lake |
| 109. Belanger Pass | 120. Eureka West | 220. Majestic Valley |
| 110. Alfred Creek | 133. Dan Creek | 243. Sheep Mountain |
| 111. Blueberry Hill | 134. Camp Creek | |

Map #3
2016



This map is solely for informational purposes only. The Borough makes no express or implied warranties with respect to the character, function, or capabilities of the map or the suitability of the map for any particular purpose beyond those originally intended by the Borough. For information regarding the full disclaimer and policies related to acceptable uses of this map, please contact the Matanuska-Susitna Borough GIS Division at 907-745-4801.

MSB Recreational Trails Plan

— — — Roads

● — ● Over Water Routes

- - - Primitive Route

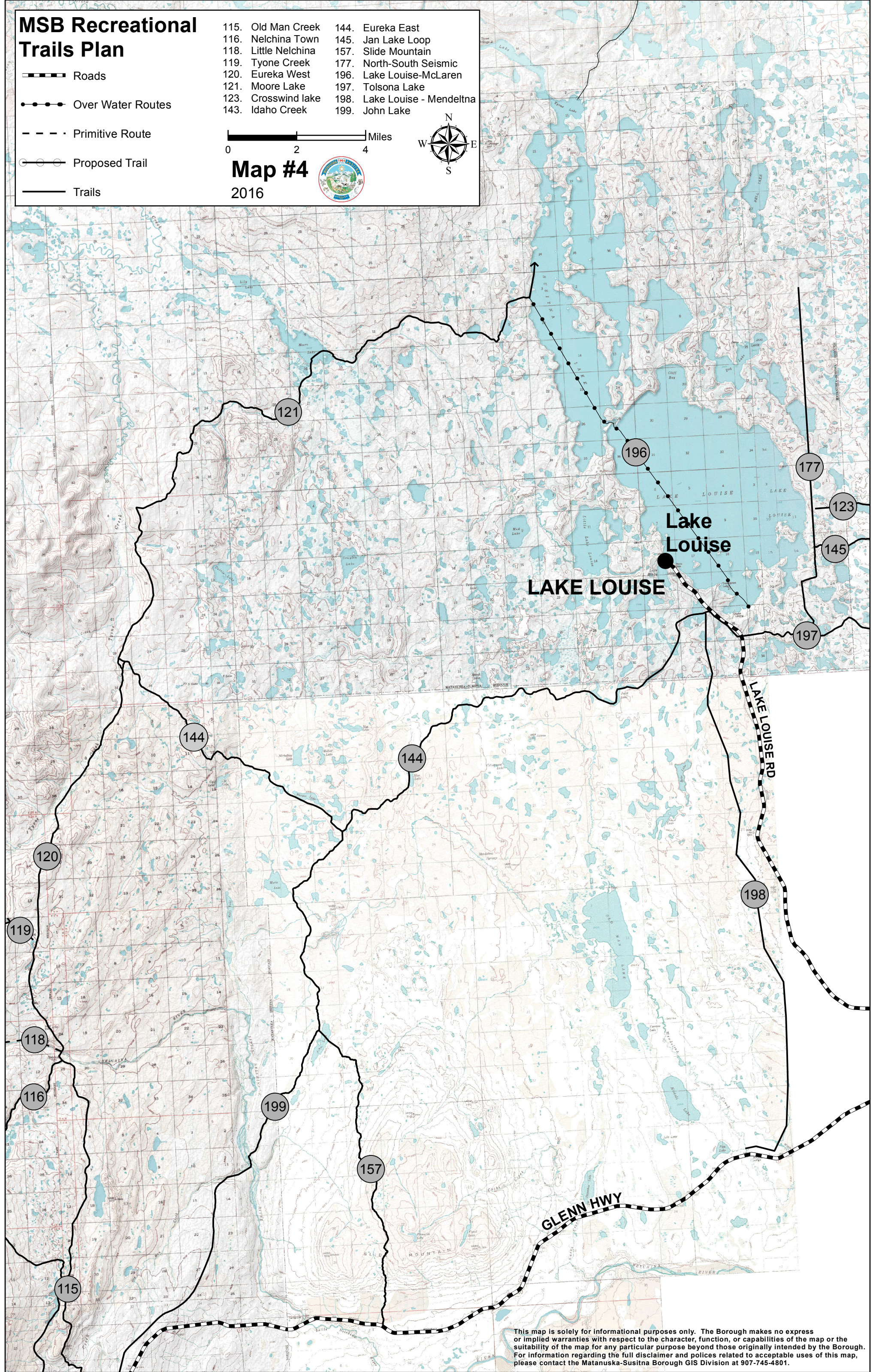
○ — ○ Proposed Trail

— Trails

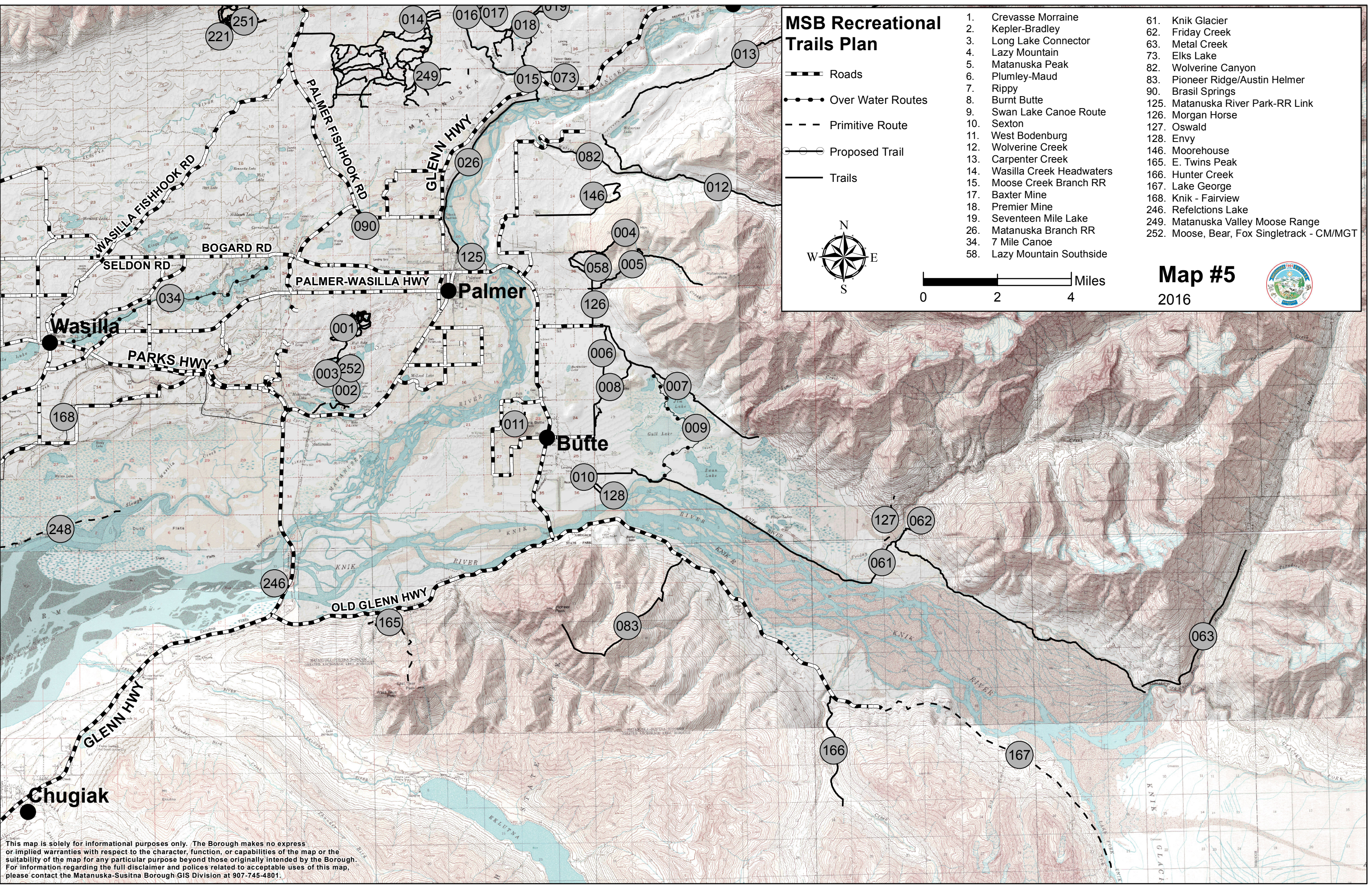
- | | |
|----------------------|------------------------------|
| 115. Old Man Creek | 144. Eureka East |
| 116. Nelchina Town | 145. Jan Lake Loop |
| 118. Little Nelchina | 157. Slide Mountain |
| 119. Tyone Creek | 177. North-South Seismic |
| 120. Eureka West | 196. Lake Louise-McLaren |
| 121. Moore Lake | 197. Tolsona Lake |
| 123. Crosswind lake | 198. Lake Louise - Mendeltna |
| 143. Idaho Creek | 199. John Lake |

0 2 4 Miles

Map #4
2016

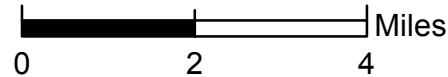
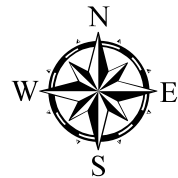


This map is solely for informational purposes only. The Borough makes no express or implied warranties with respect to the character, function, or capabilities of the map or the suitability of the map for any particular purpose beyond those originally intended by the Borough. For information regarding the full disclaimer and policies related to acceptable uses of this map, please contact the Matanuska-Susitna Borough GIS Division at 907-745-4801.



MSB Recreational Trails Plan

- Roads
- Over Water Routes
- Primitive Route
- Proposed Trail
- Trails

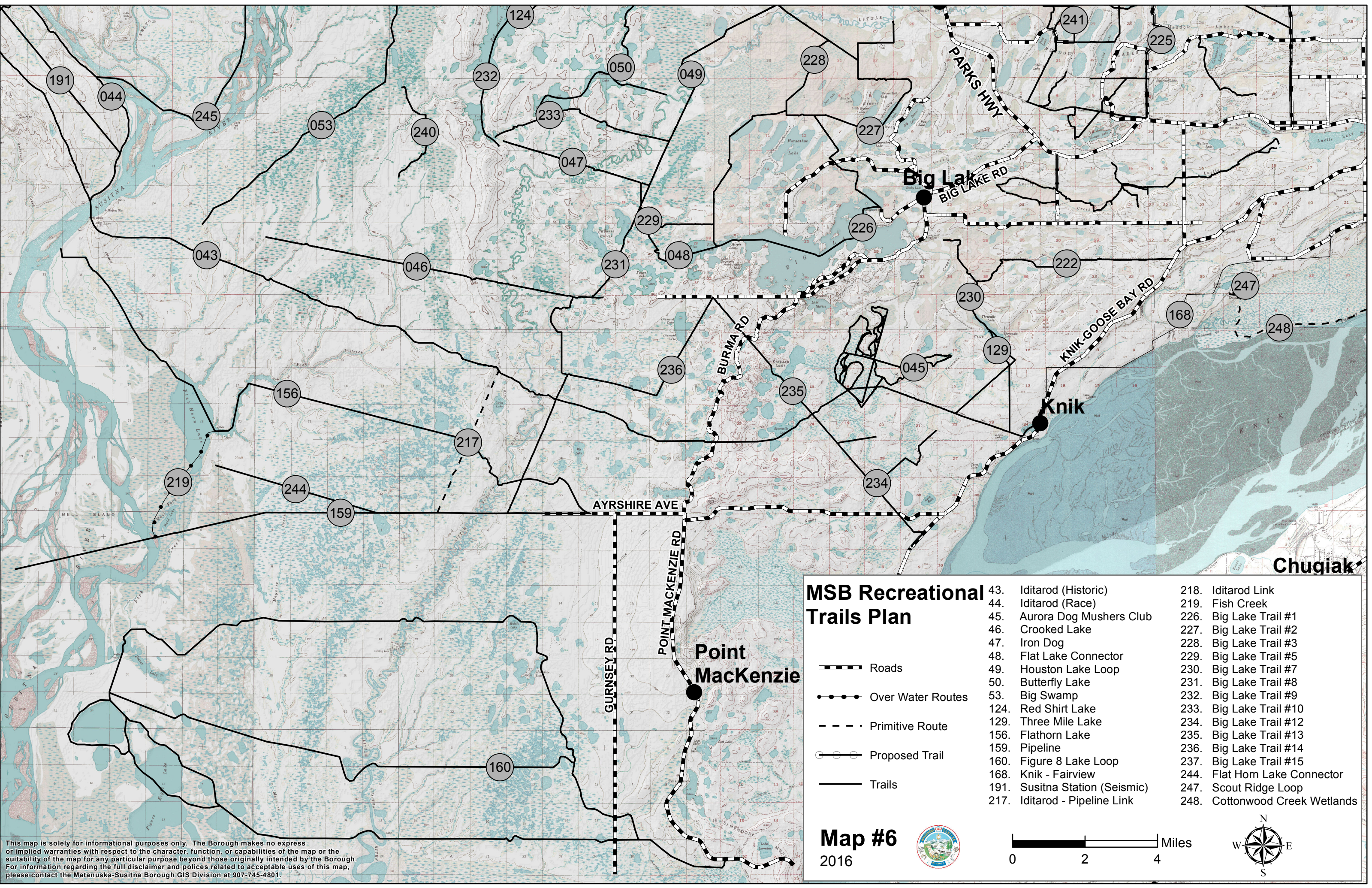


- | | |
|------------------------------|--|
| 1. Crevasse Morraine | 61. Knik Glacier |
| 2. Kepler-Bradley | 62. Friday Creek |
| 3. Long Lake Connector | 63. Metal Creek |
| 4. Lazy Mountain | 73. Elks Lake |
| 5. Matanuska Peak | 82. Wolverine Canyon |
| 6. Plumley-Maud | 83. Pioneer Ridge/Austin Helmer |
| 7. Rippy | 90. Brasil Springs |
| 8. Burnt Butte | 125. Matanuska River Park-RR Link |
| 9. Swan Lake Canoe Route | 126. Morgan Horse |
| 10. Sexton | 127. Oswald |
| 11. West Bodenburg | 128. Envy |
| 12. Wolverine Creek | 146. Moorehouse |
| 13. Carpenter Creek | 165. E. Twins Peak |
| 14. Wasilla Creek Headwaters | 166. Hunter Creek |
| 15. Moose Creek Branch RR | 167. Lake George |
| 17. Baxter Mine | 168. Knik - Fairview |
| 18. Premier Mine | 246. Refelctions Lake |
| 19. Seventeen Mile Lake | 249. Matanuska Valley Moose Range |
| 26. Matanuska Branch RR | 252. Moose, Bear, Fox Singletrack - CM/MGT |
| 34. 7 Mile Canoe | |
| 58. Lazy Mountain Southside | |

Map #5
2016



This map is solely for informational purposes only. The Borough makes no express or implied warranties with respect to the character, function, or capabilities of the map or the suitability of the map for any particular purpose beyond those originally intended by the Borough. For information regarding the full disclaimer and policies related to acceptable uses of this map, please contact the Matanuska-Susitna Borough GIS Division at 907-745-4801.




This map is solely for informational purposes only. The Borough makes no express or implied warranties with respect to the character, function, or capabilities of the map or the suitability of the map for any particular purpose beyond those originally intended by the Borough. For information regarding the full disclaimer and policies related to acceptable uses of this map, please contact the Matanuska-Susitna Borough GIS Division at 907-745-4801.


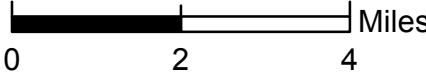
MSB Recreational Trails Plan

- Roads
- Over Water Routes
- Primitive Route
- Proposed Trail
- Trails

- | | |
|--------------------------------|--------------------------------|
| 43. Iditarod (Historic) | 218. Iditarod Link |
| 44. Iditarod (Race) | 219. Fish Creek |
| 45. Aurora Dog Musher's Club | 226. Big Lake Trail #1 |
| 46. Crooked Lake | 227. Big Lake Trail #2 |
| 47. Iron Dog | 228. Big Lake Trail #3 |
| 48. Flat Lake Connector | 229. Big Lake Trail #5 |
| 49. Houston Lake Loop | 230. Big Lake Trail #7 |
| 50. Butterfly Lake | 231. Big Lake Trail #8 |
| 53. Big Swamp | 232. Big Lake Trail #9 |
| 124. Red Shirt Lake | 233. Big Lake Trail #10 |
| 129. Three Mile Lake | 234. Big Lake Trail #12 |
| 156. Flathorn Lake | 235. Big Lake Trail #13 |
| 159. Pipeline | 236. Big Lake Trail #14 |
| 160. Figure 8 Lake Loop | 237. Big Lake Trail #15 |
| 168. Knik - Fairview | 244. Flat Horn Lake Connector |
| 191. Susitna Station (Seismic) | 247. Scout Ridge Loop |
| 217. Iditarod - Pipeline Link | 248. Cottonwood Creek Wetlands |

Map #6
2016





MSB Recreational Trails Plan

- Roads
- Over Water Routes
- Primitive Route
- Proposed Trail
- Trails

- 39. Central
- 40. Talkeetna Mail (Herning)
- 41. Willow Mountain
- 42. Mail Trail Connector
- 49. Houston Lake Loop
- 50. Butterfly Lake
- 51. Mud Lake
- 52. Rolly Creek
- 53. Big Swamp
- 54. Wood Cutter
- 55. Corral Hill
- 57. Trapper Lake
- 93. Grey's Creek
- 94. West Gateway
- 124. Red Shirt Lake
- 147. Parker Lake
- 155. Hessler-Norris Sled Dog
- 164. Lucky Shot
- 175. Old Hunter's
- 176. Willow Swamp Loop
- 178. Windsock
- 179. Almond Lake
- 180. John Lake
- 181. Boot Lake
- 183. Emil Stancec Sled Dog
- 184. Caswell Area
- 195. Shirley Lake
- 213. Talkeetna Mail-Central Connector
- 214. Mail Trail Reroute
- 238. Mona Lakes
- 239. Deshka Crossover
- 240. Fish Creek
- 242. Deshka Su
- 245. Iditarod Common Use Reroute

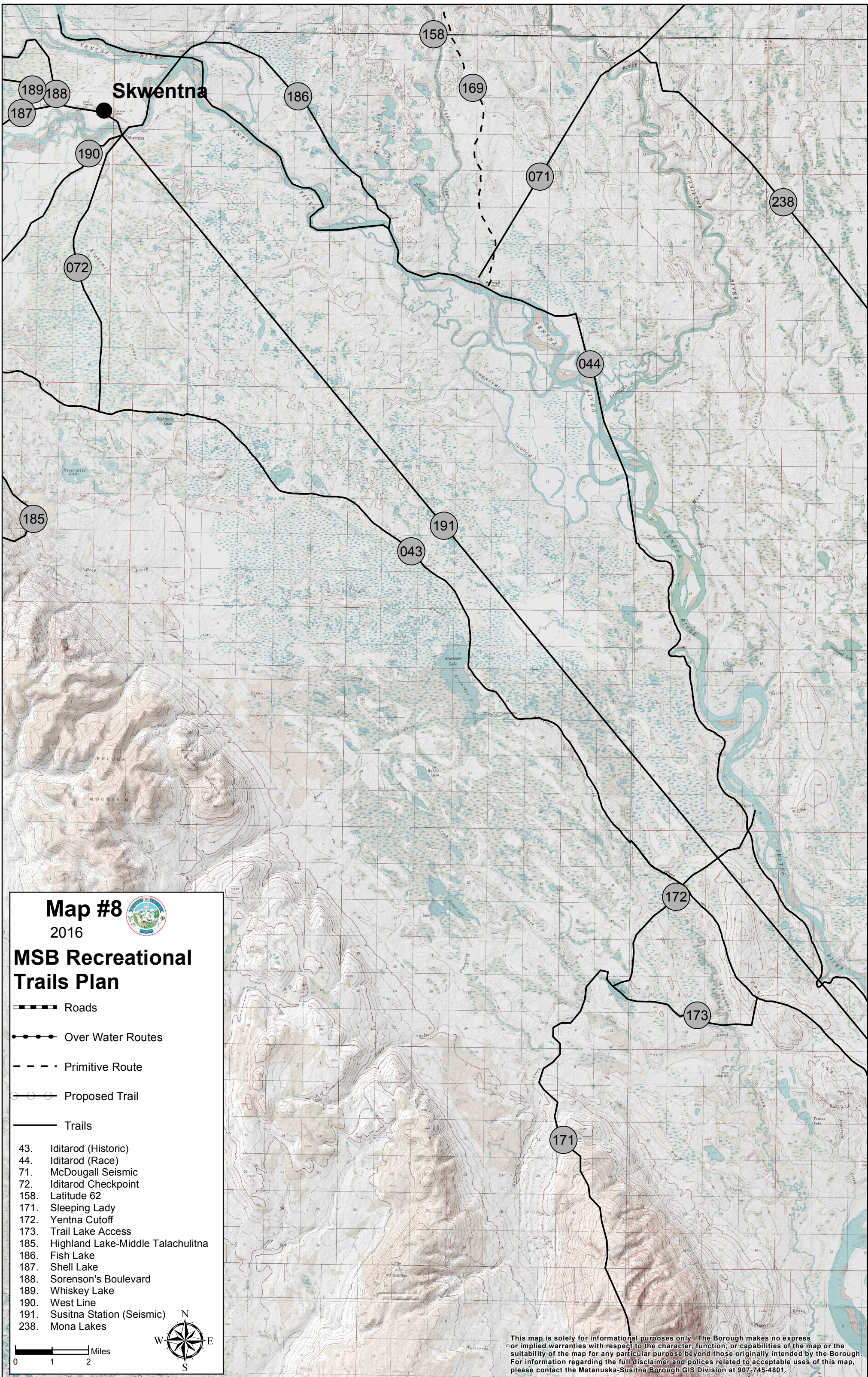


0 1 2 Miles

Map #7
2016



This map is solely for informational purposes only. The Borough makes no express or implied warranties with respect to the character, function, or capabilities of the map or the suitability of the map for any particular purpose beyond those originally intended by the Borough. For information regarding the full disclaimer and policies related to acceptable uses of this map, please contact the Matanuska-Susitna Borough GIS Division at 907-745-4801.



MSB Recreational Trails Plan

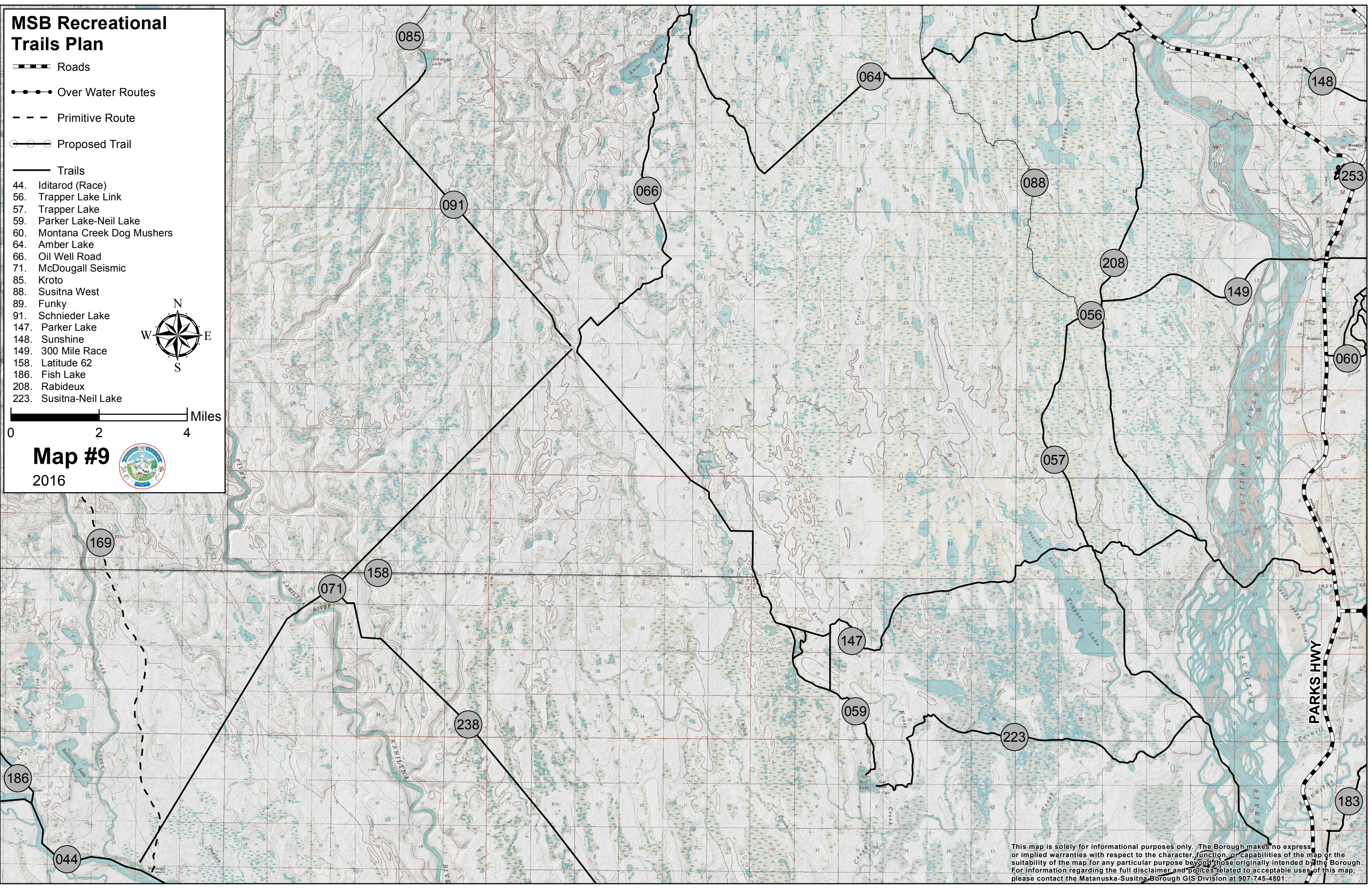
- Roads
- Over Water Routes
- Primitive Route
- Proposed Trail

- Trails
- 44. Iditarod (Race)
 - 56. Trapper Lake Link
 - 57. Trapper Lake
 - 59. Parker Lake-Neil Lake
 - 60. Montana Creek Dog Mushers
 - 64. Amber Lake
 - 66. Oil Well Road
 - 71. McDougall Seismic
 - 85. Kroto
 - 88. Susitna West
 - 89. Funky
 - 91. Schnieder Lake
 - 147. Parker Lake
 - 148. Sunshine
 - 149. 300 Mile Race
 - 158. Latitude 62
 - 186. Fish Lake
 - 208. Rabideux
 - 223. Susitna-Neil Lake




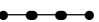



0 2 4 Miles

Map #9
2016

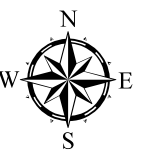


This map is solely for informational purposes only. The Borough makes no express or implied warranties with respect to the character, function, or capabilities of the map or the suitability of the map for any particular purpose beyond those originally intended by the Borough. For information regarding the full disclaimer and policies related to acceptable uses of this map, please contact the Matanuska-Susitna Borough GIS Division at 907-745-4801.

MSB Recreational Trails Plan

-  Roads
-  Over Water Routes
-  Primitive Route
-  Proposed Trail
-  Trails

- 35. Willow Sled
- 60. Montana Creek Dog Musers
- 75. S. Fork Montana Creek
- 77. Emil Lake
- 78. Upper S. Fork Montana Creek
- 79. Luthman
- 80. Montana Creek Falls
- 81. S. Fork Loop
- 147. Parker Lake
- 148. Sunshine
- 149. 300 Mile Race
- 152. Rainbow Lake
- 153. N. Fork Kashwitna Connector
- 154. Montana Creek Dog Musers 50 Mile
- 184. Caswell Area
- 214. Mail Trail Reroute
- 253. Dorothy Jones/ Su Valley High








Map #10
2016

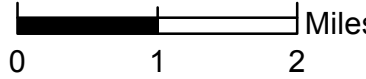


This map is solely for informational purposes only. The Borough makes no express or implied warranties with respect to the character, function, or capabilities of the map or the suitability of the map for any particular purpose beyond those originally intended by the Borough. For information regarding the full disclaimer and policies related to acceptable uses of this map, please contact the Matanuska-Susitna Borough GIS Division at 907-745-4801.

MSB Recreational Trails Plan

-  Roads
-  Over Water Routes
-  Primitive Route
-  Proposed Trail
-  Trails

- 76. Chulitna Bluff
- 84. E. Petersville
- 87. East-West Express
- 92. Petersville Roadside
- 200. Old RCA
- 201. Old Lake Road
- 203. Ridge
- 204. Talkeetna River
- 205. Talkeetna Lakes Park
- 206. Ski Hill
- 208. Rabideux
- 211. Twister Creek
- 212. Chase
- 224. Susitna River Route








Map #11
2016

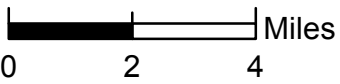




This map is solely for informational purposes only. The Borough makes no express or implied warranties with respect to the character, function, or capabilities of the map or the suitability of the map for any particular purpose beyond those originally intended by the Borough. For information regarding the full disclaimer and policies related to acceptable uses of this map, please contact the Matanuska-Susitna Borough GIS Division at 907-745-4801.

MSB Recreational Trails Plan

-  Roads
-  Over Water Routes
-  Primitive Route
-  Proposed Trail
-  Trails

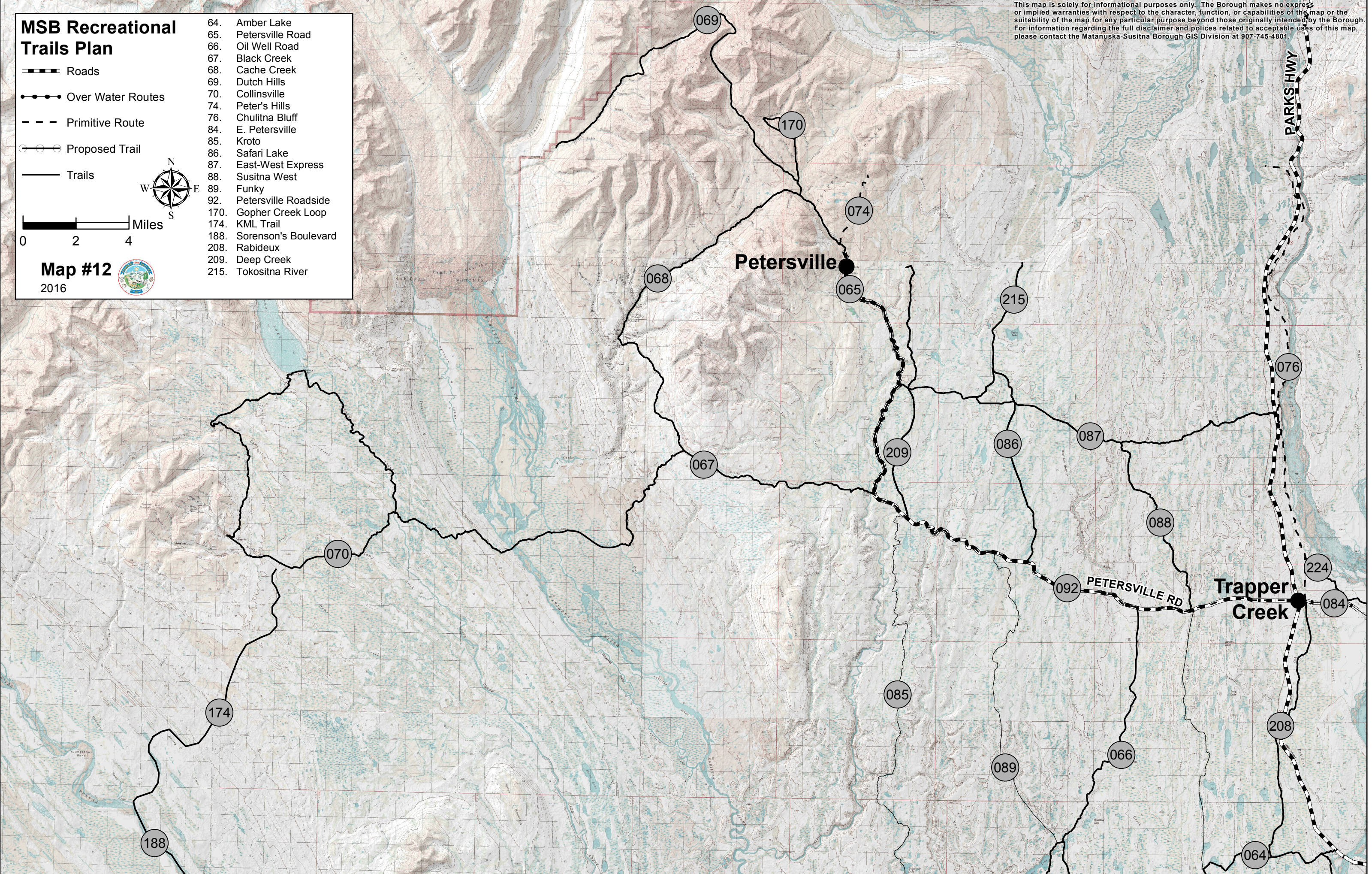


Map #12
2016








- 64. Amber Lake
- 65. Petersville Road
- 66. Oil Well Road
- 67. Black Creek
- 68. Cache Creek
- 69. Dutch Hills
- 70. Collinsville
- 74. Peter's Hills
- 76. Chulitna Bluff
- 84. E. Petersville
- 85. Kroto
- 86. Safari Lake
- 87. East-West Express
- 88. Susitna West
- 89. Funky
- 92. Petersville Roadside
- 170. Gopher Creek Loop
- 174. KML Trail
- 188. Sorenson's Boulevard
- 208. Rabideux
- 209. Deep Creek
- 215. Tokositna River

This map is solely for informational purposes only. The Borough makes no express or implied warranties with respect to the character, function, or capabilities of the map or the suitability of the map for any particular purpose beyond those originally intended by the Borough. For information regarding the full disclaimer and policies related to acceptable uses of this map, please contact the Matanuska-Susitna Borough GIS Division at 907-745-4801.



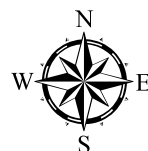
MSB Recreational Trails Plan

-  Roads
-  Over Water Routes
-  Primitive Route
-  Proposed Trail
-  Trails

Map #13
2016



- 95. Clearwater Creek
- 96. McLaren River
- 97. Valdez Creek
- 98. Windy Creek
- 99. Butte Creek
- 150. Susitna River
- 151. Hatchet Lake
- 196. Lake Louise-McLaren



0 2 4 Miles

This map is solely for informational purposes only. The Borough makes no express or implied warranties with respect to the character, function, or capabilities of the map or the suitability of the map for any particular purpose beyond those originally intended by the Borough. For information regarding the full disclaimer and policies related to acceptable uses of this map, please contact the Matanuska-Susitna Borough GIS Division at 907-745-4801.