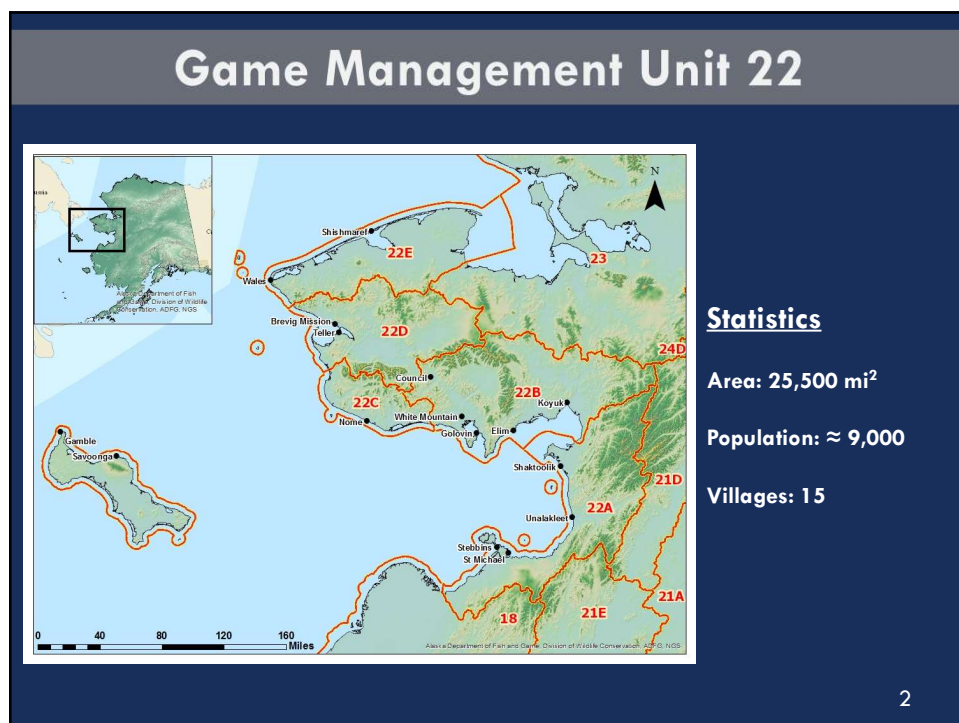


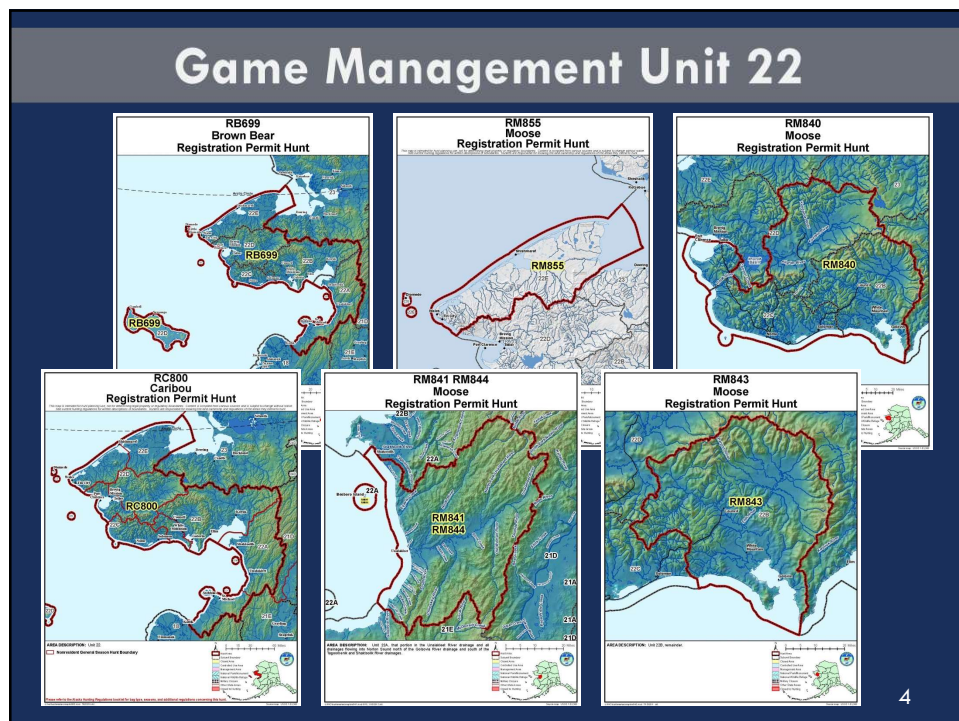
1



2




3



4

Moose



Intensive Management Population Objective:	5100-6800
Unit 22 Moose abundance estimate:	6775
Intensive Management Harvest Objective:	300-680
Estimated Average Annual Harvest:	250-300
Customary and Traditional Use Determination:	Unit 22, Positive
Amount Necessary for Subsistence:	Unit 22, 250-300
2019 Harvestable Surplus:	313

5

Moose

**Unit 22A
Fall Moose Hunt**





**Unit 22D
Fall Moose Hunt**

6

Moose

Status:

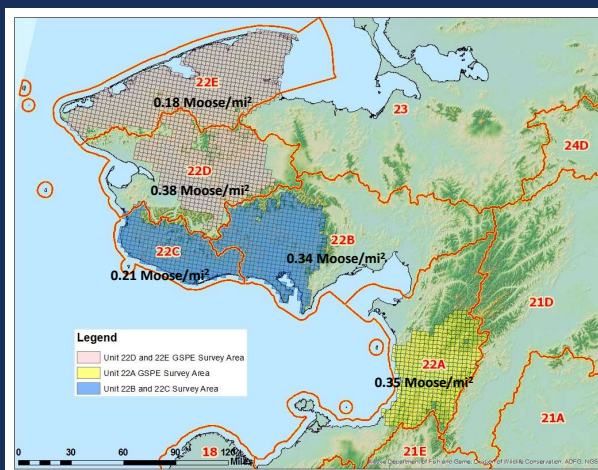
22A Increasing

22B Increasing/Stable

22C Increasing/Stable

22D Decreasing/ Stable

22E Increasing/Stable

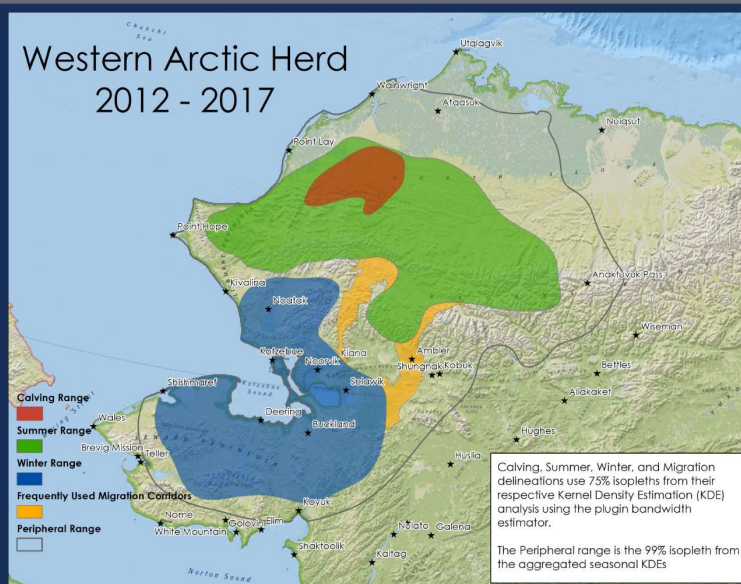


—

7

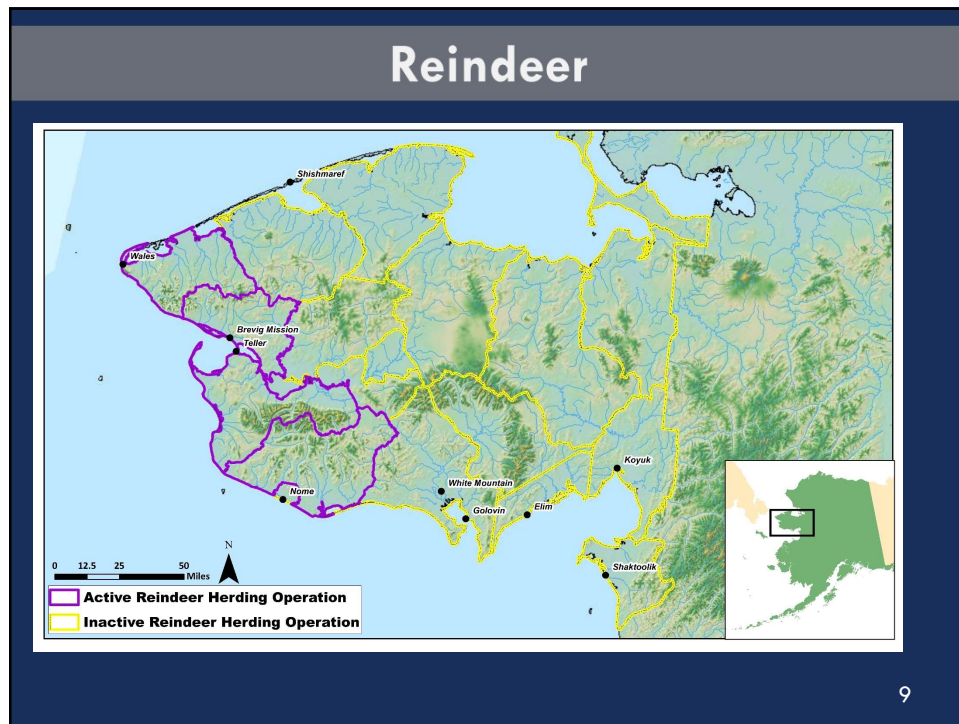
Caribou

Western Arctic Herd 2012 - 2017

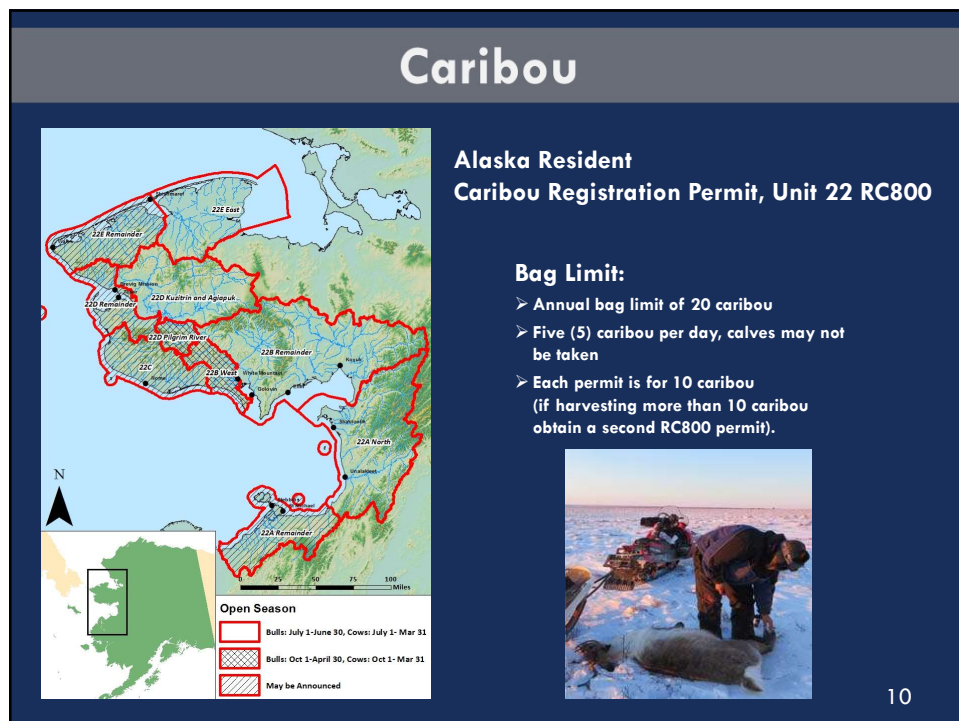


8

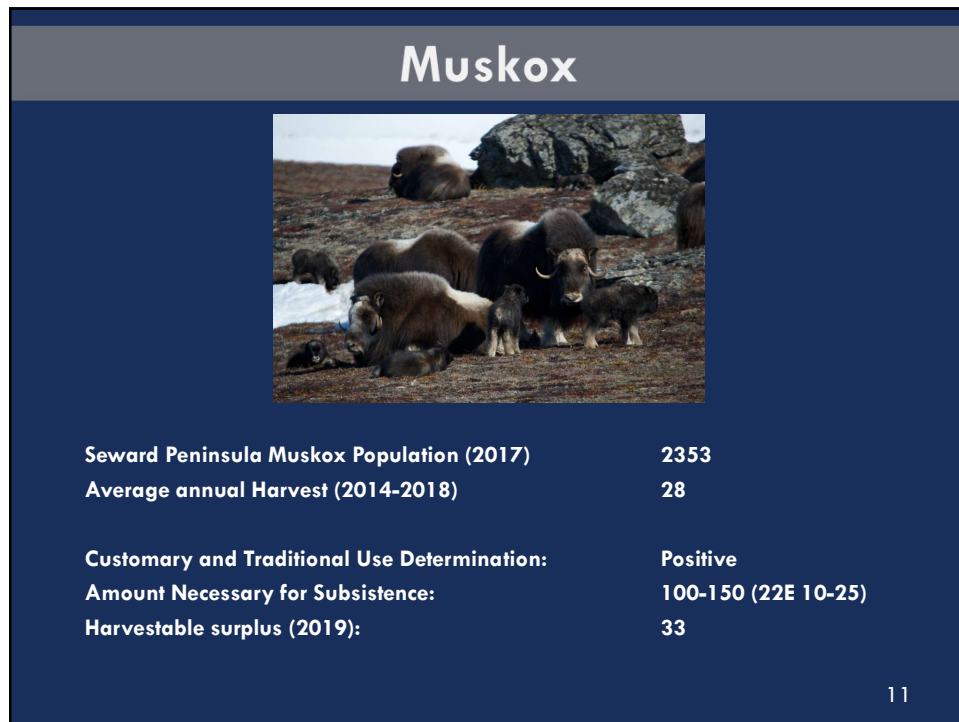
8



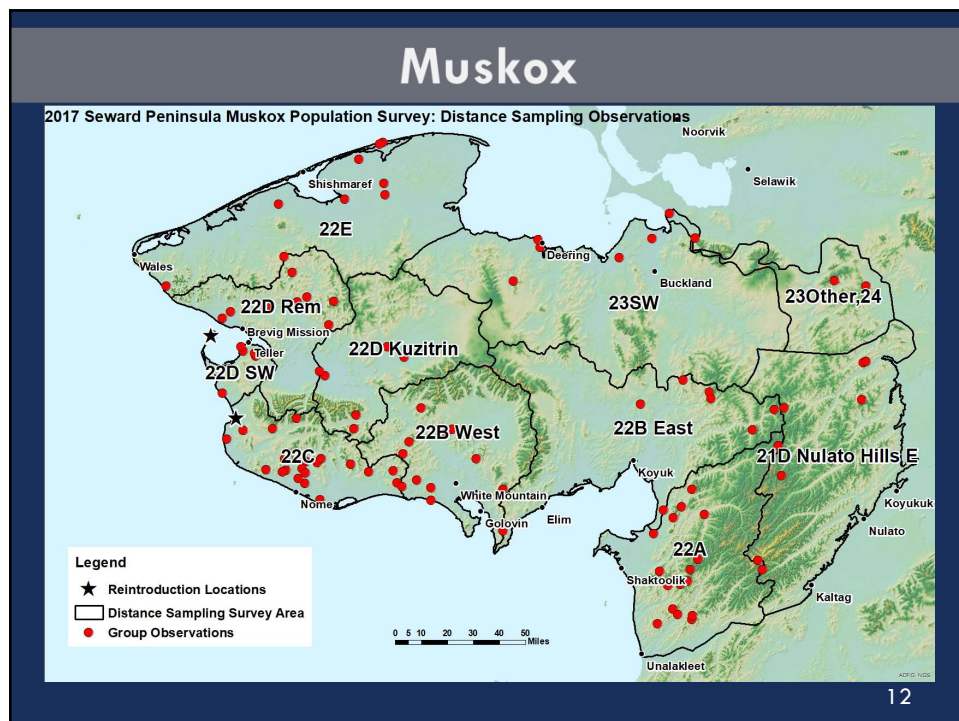
9



10



11



12



13



14

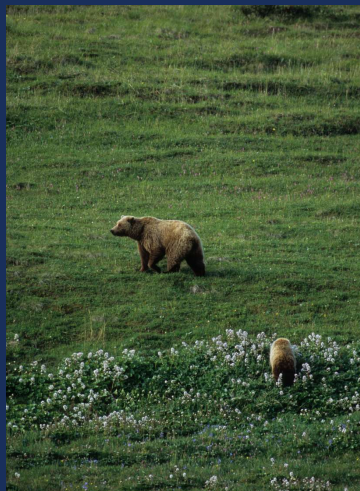
Muskox



15

15


Bears



16

16

Brown Bears



Bear Aware?

www.alaskabear.alaska.gov

Don't attract bears to your camp or home.

Remember to:

- ☞ Protect your fish drying racks, dry meat, and smokehouses with electric fence.
- ☞ Keep your property clean and free of attractants. Hides, bones, fish, seal oil, bird feeders, dirty barbecue grills, pet food, smokers, fish tackle, dry racks and garbage will attract bears.
- ☞ Store garbage in an airtight containers or shed. Pack-out garbage before it can attract bears.
- ☞ Secure all doors and windows bears could climb through. When leaving camp, consider boarding them up with thick wood with nails pointing outward to discourage bears.

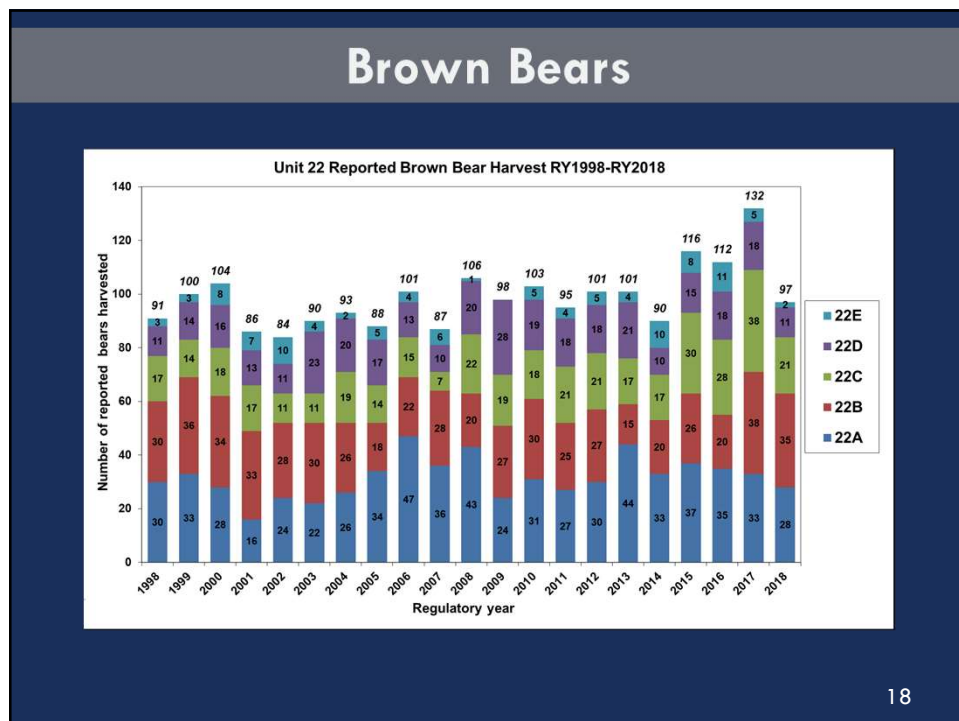
If you have a nuisance bear hanging around camp:

- ☞ Make all efforts to deter (or discourage) the bear from camp before killing the bear in Defense of Life or Property (DLP).
- ☞ If you shoot a bear in DLP:
 - A hunting license is not required.
 - Notify ADF-G or Alaska Wildlife Troopers immediately.
 - Skin and salvage the skull and hide with claws attached and send to your local ADF-G Office.
 - The skull, hide, and claws must be surrendered to the State when a bear is killed in DLP.

To Download ADF-G's
 Brown Bear and Grizzly Bear
 Regulations PDF visit www.adfg.state.ak.us
 Alaska Wildlife Troopers

17

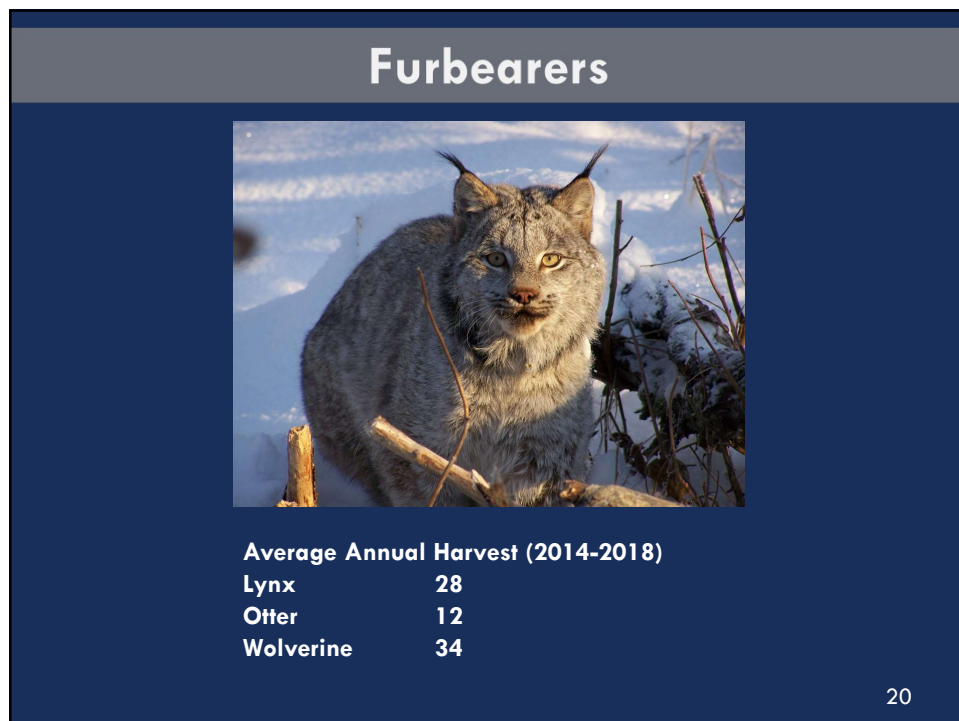
17



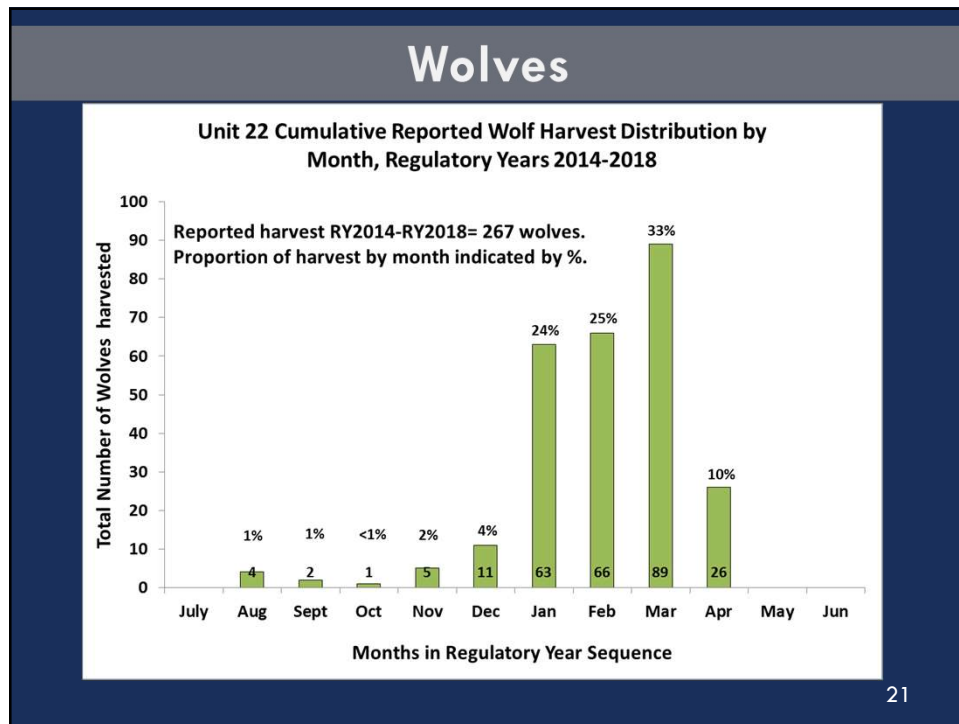
18



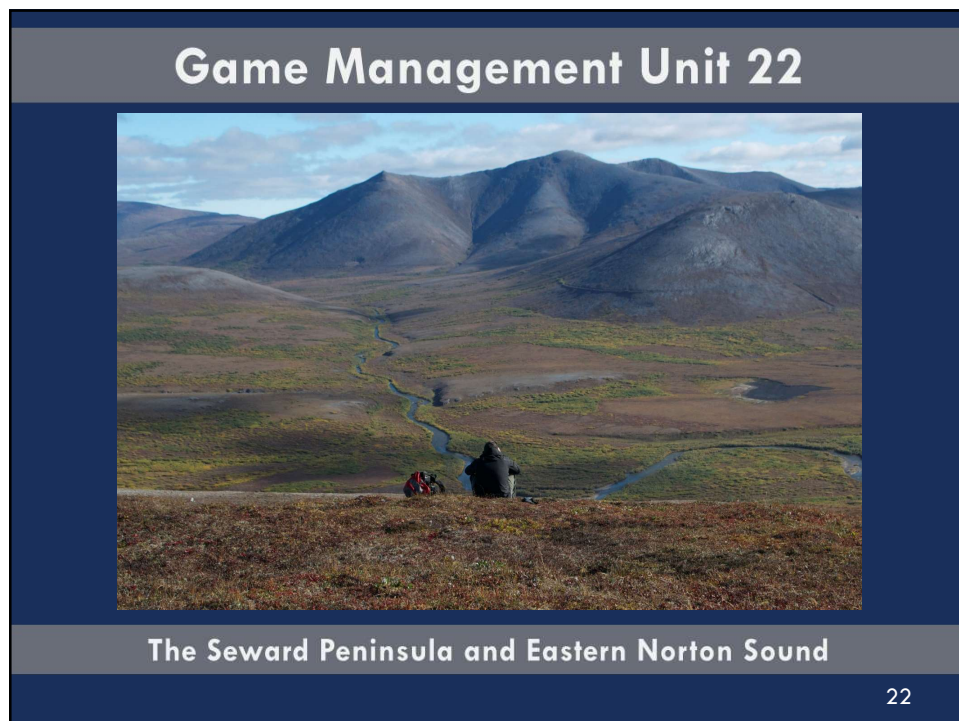
19



20



21



22