

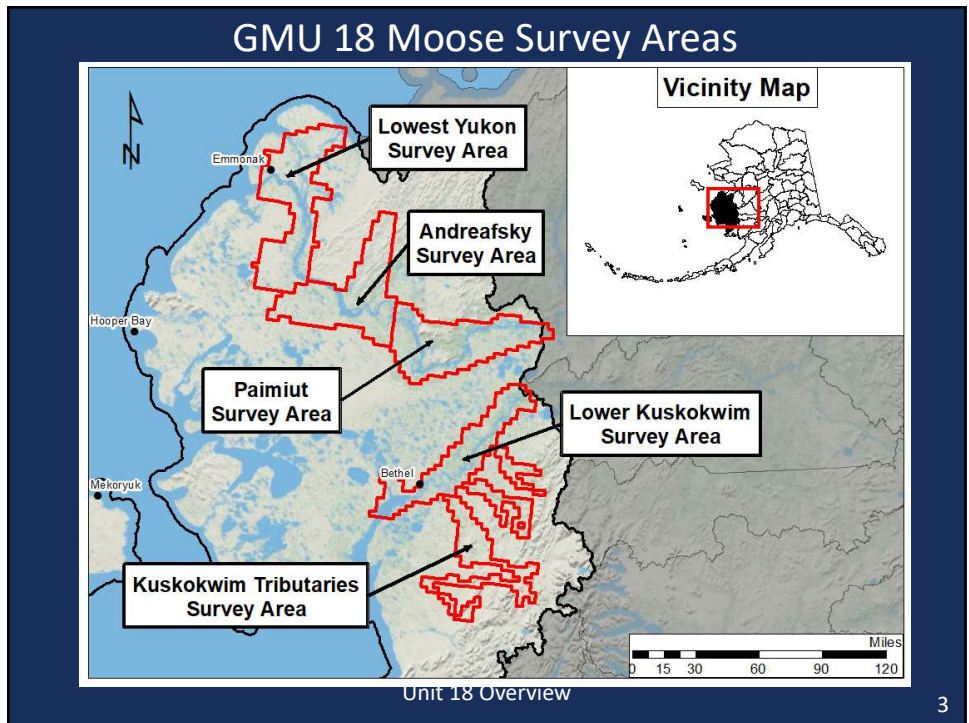
1

Moose

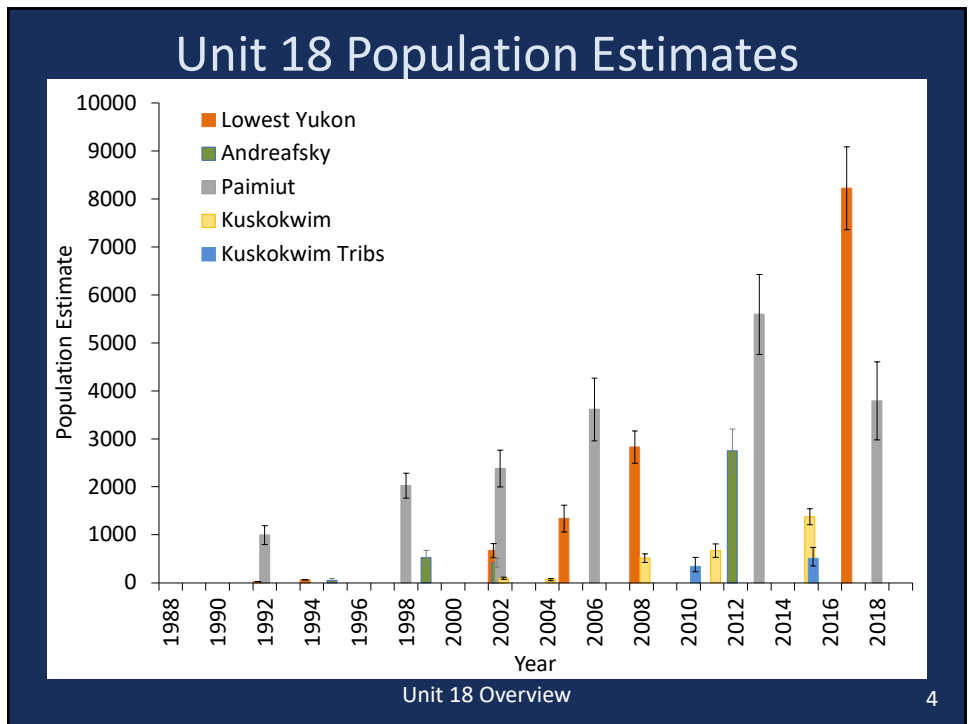
Current Unit wide estimate	~15,700
IM Population Objective	1000-2000
IM Harvest Objective	60-200
C&T	Positive
ANS	200-400
Harvestable Surplus	~1,550
Current Harvest (5-year Average)	879

Proposals, 7, 8, 9, 10 Unit 18 Overview 2

2




3



4

Twinning rates


Count Area	2015	2016	2017	2018	2019
Kuskokwim	40%	46%	57%	29%	44%
Lowest Yukon	50%	27%	40%	23%	34%
Andreafsky	42%	28%	43%	31%	31%
Paimiut	31%	15%	41%	16%	20%



Unit 18 Overview 5

5

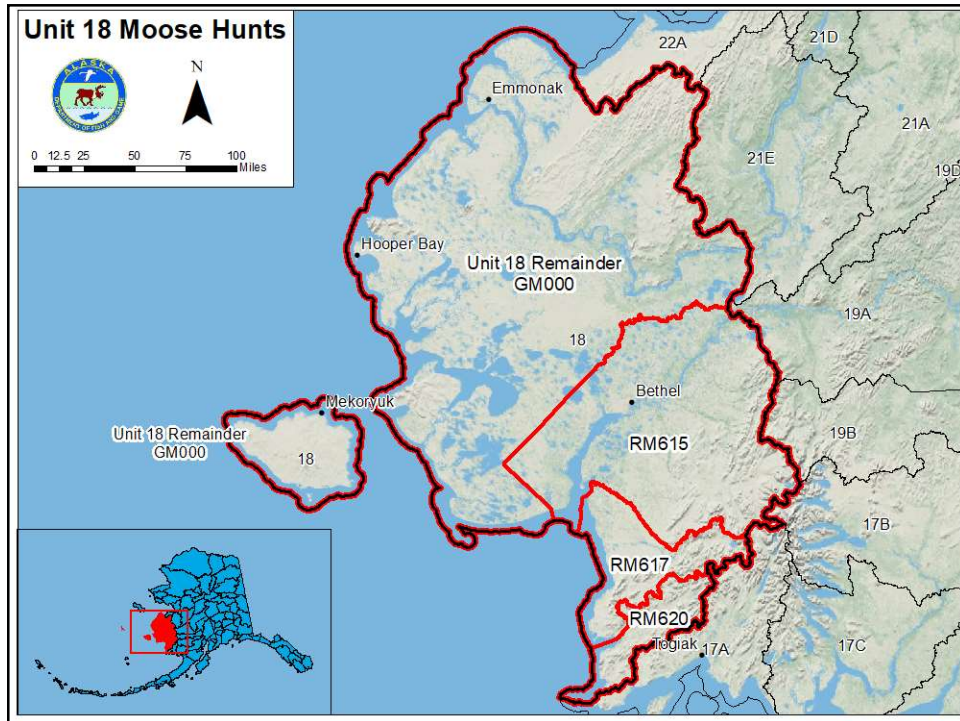
Browse Removal Rates



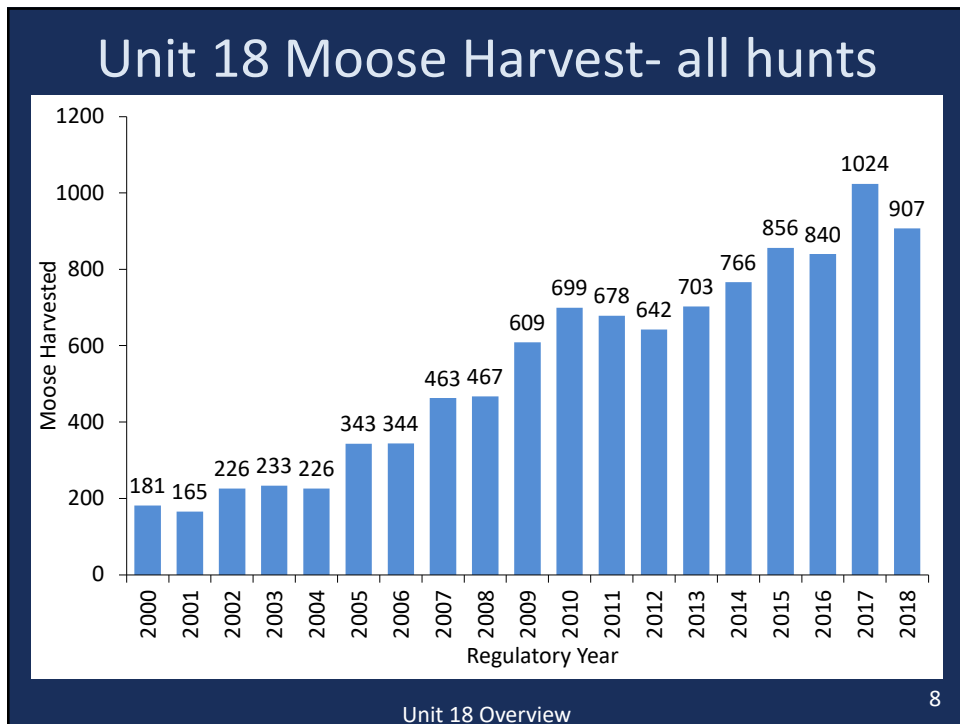
- Lowest Yukon: 24% (2017)
23% (2019)
- Paimiut: 35% (2018)
- Kuskokwim: 16% (2016)
23% (2019)
- Kuskokwim Tributaries: 15% (2019)

Unit 18 Overview 6

6



7



8

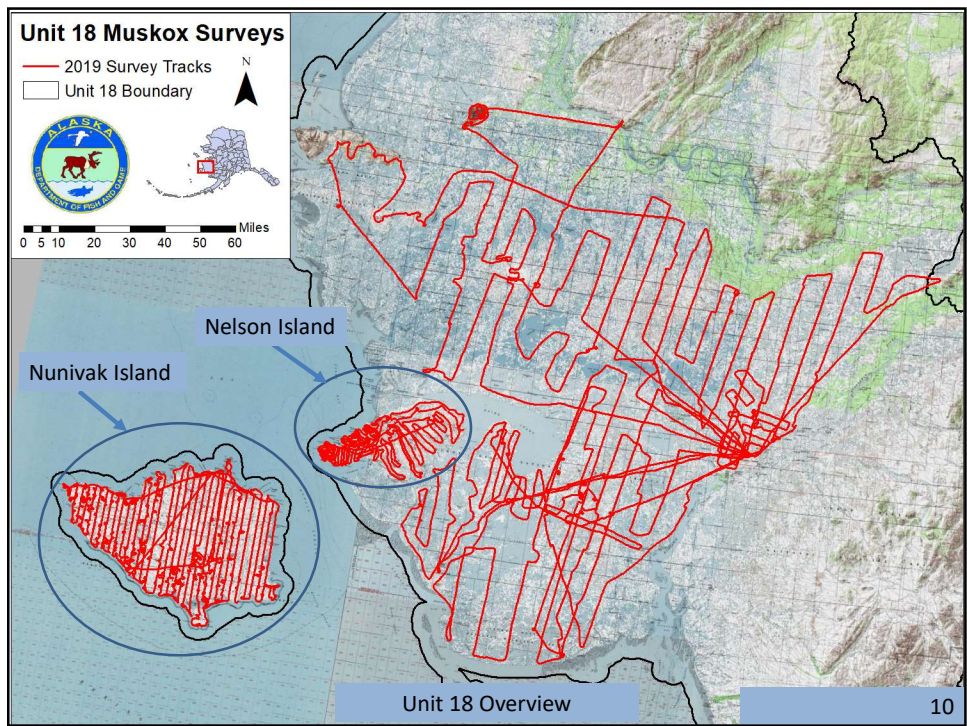
Muskox

Population :	~ 1,500
Status:	declining or stable
C&T	negative
Harvest:	100 -150 bulls per year 200-250 cows per year

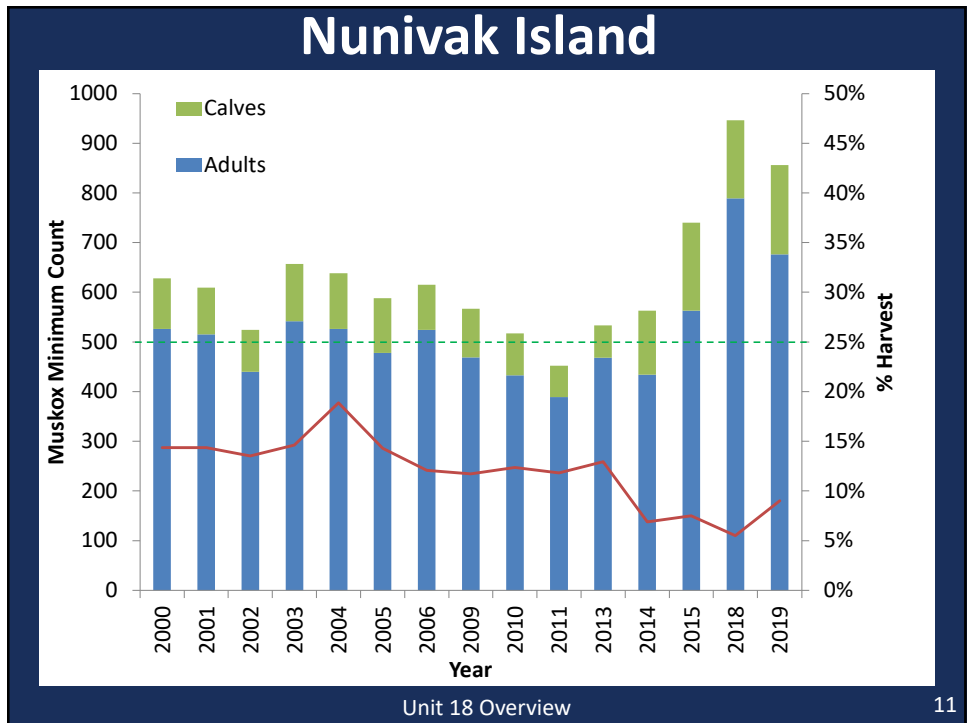


Proposals 4, 5, and 6 Unit 18 Overview

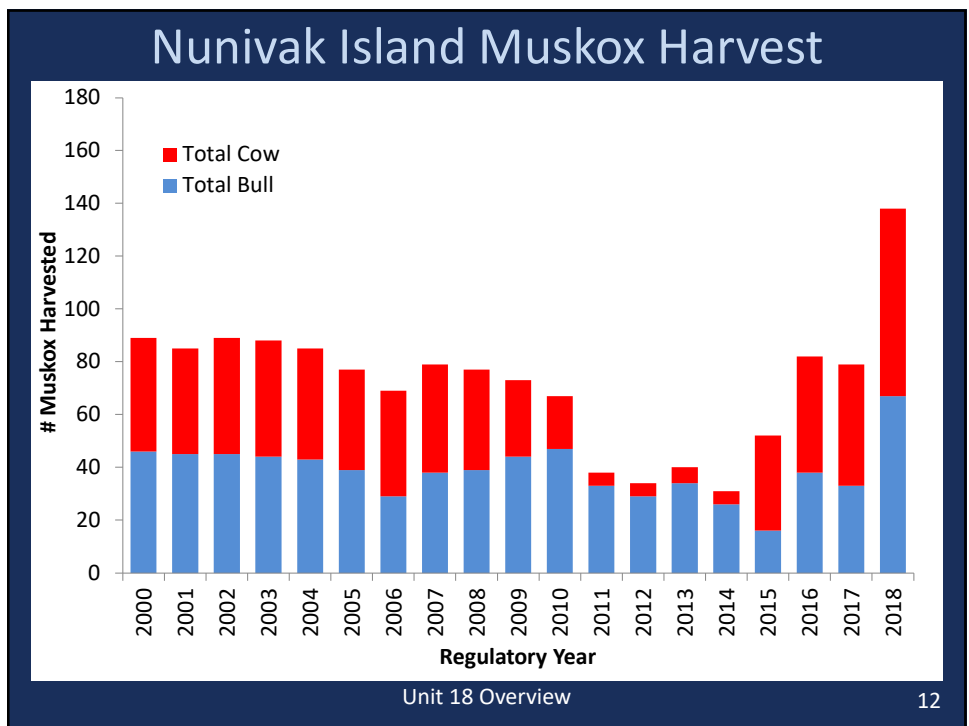
9



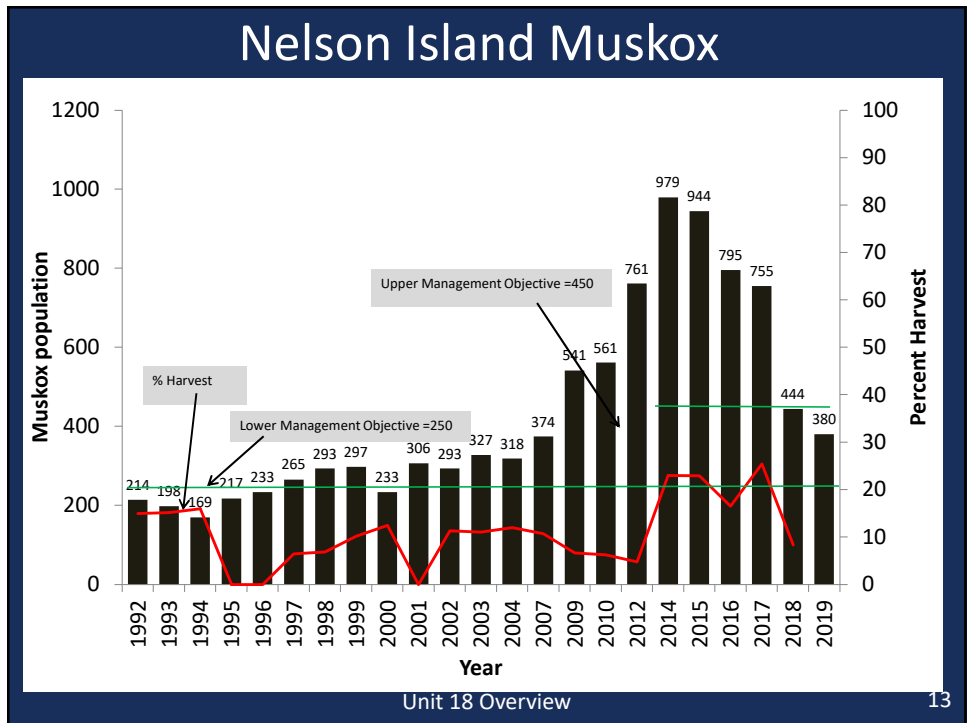
10



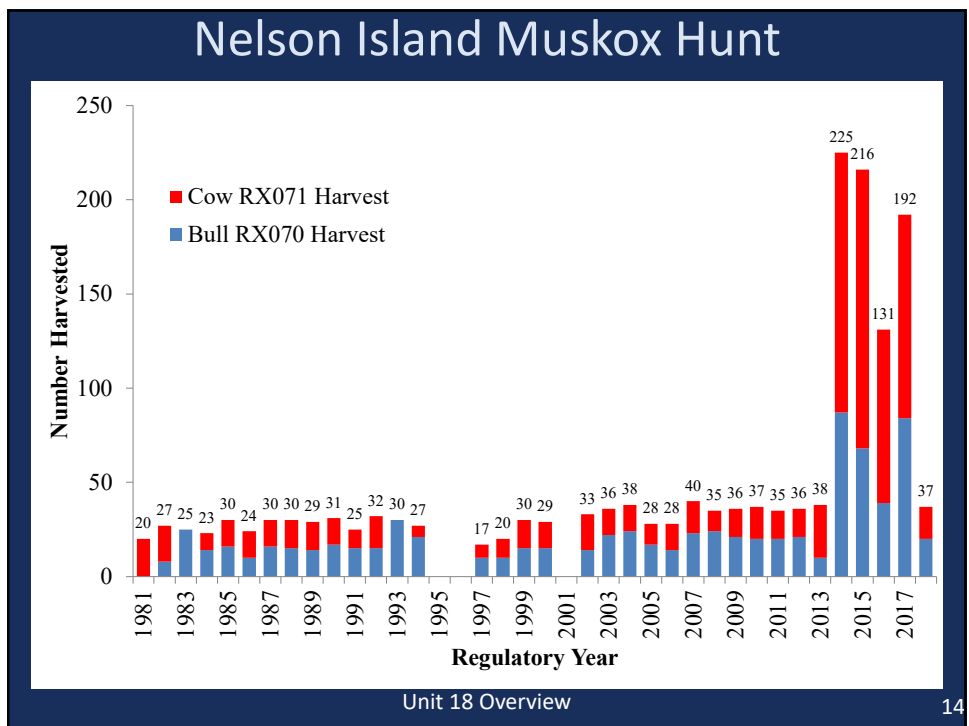
11



12




13



14

Caribou



No Proposal Unit 18 Overview 15

15

Brown Bear




Population status: Appears stable
Harvest: 5-39 (10-year average of 29)
Proposals 16, and 17 Unit 18 Overview 16

16

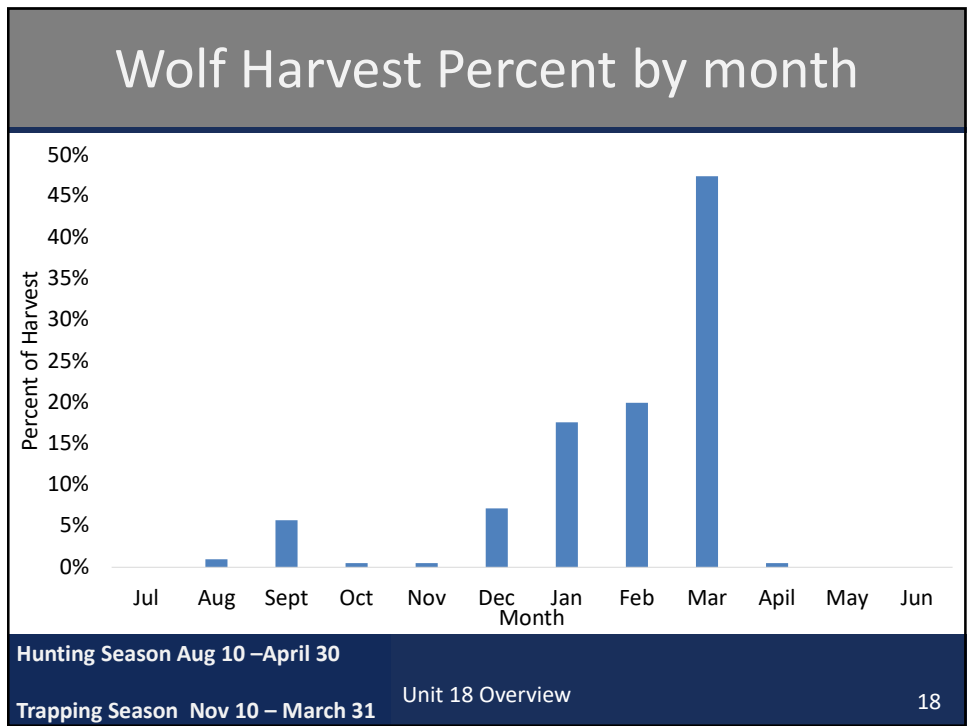
Wolf

Density:
Status: **Increasing**
Harvest: **7-82 per year** Previous 5-year average **42**



No proposal Unit 18 Overview 17

17




18

Furbearer

Average annual harvest and Range (2013-2017)

- Lynx average of 238 (range 197-285)
- Otter average 319 (range 234-391)
- Wolverine average 25 (range 16-40)



No Proposals Unit 18 Overview 19

19

Small Game



Proposal 14, and 15 Unit 18 Overview 20

20



21