

# Proposal 152: Additional Information Submitted by Denali National Park Service

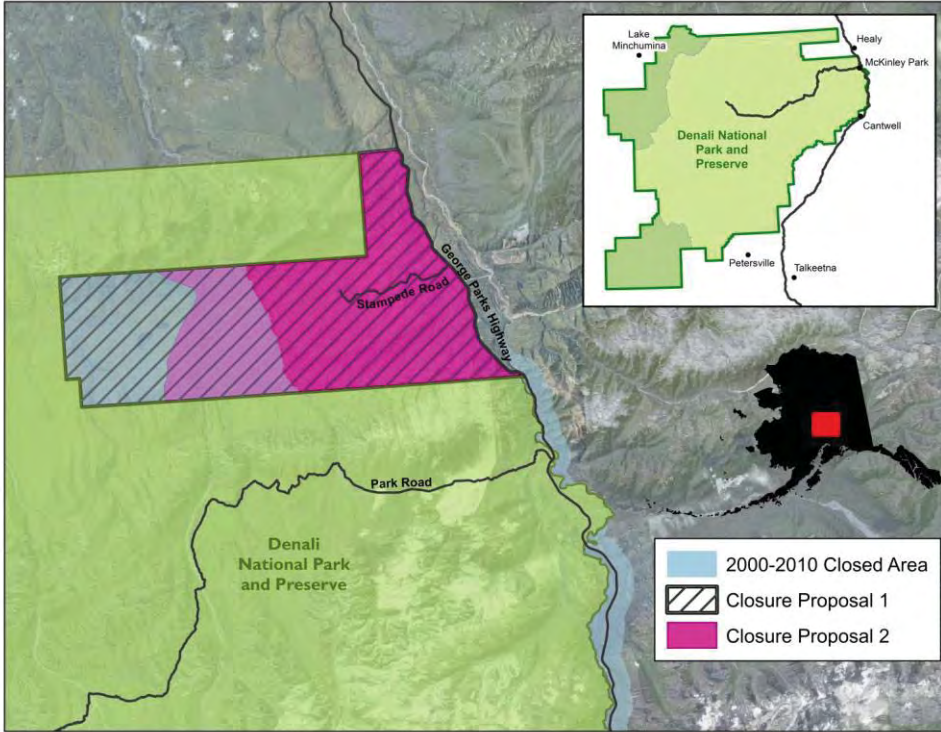


Figure 1. Location of proposed seasonal closures to wolf trapping and hunting in GMU 20 adjacent to Denali National Park. The former (2000-2010) closure is displayed for comparison.

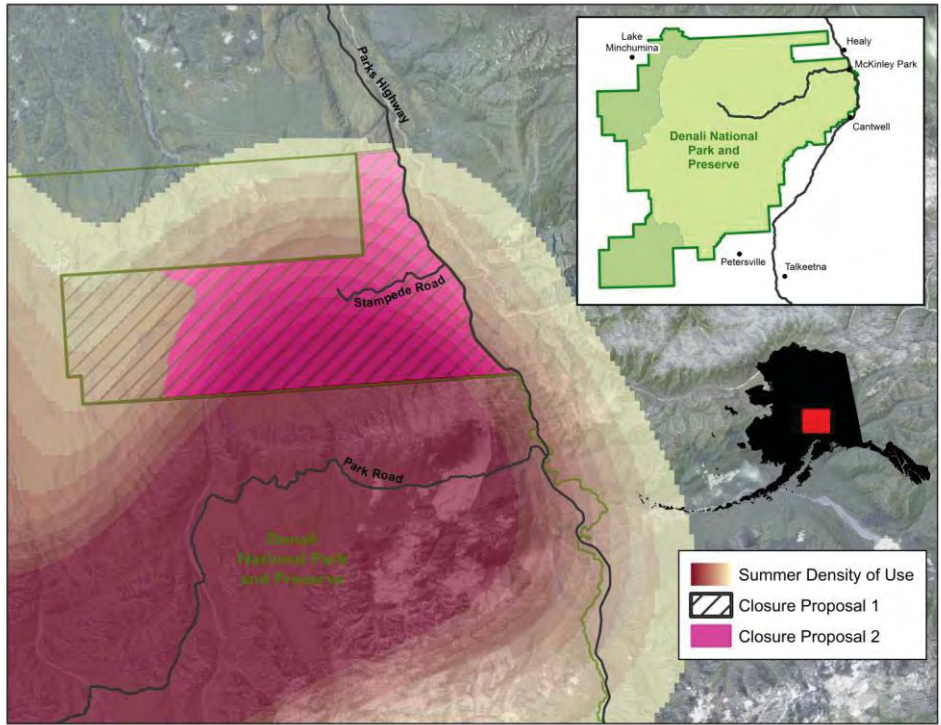


Figure 2. Density of locations of radio collared wolves May - September, 2004-2018 in the northeast corner of Denali National Park and Preserve in interior Alaska, USA.

## Proposal 152: Additional Information Submitted by Denali National Park Service

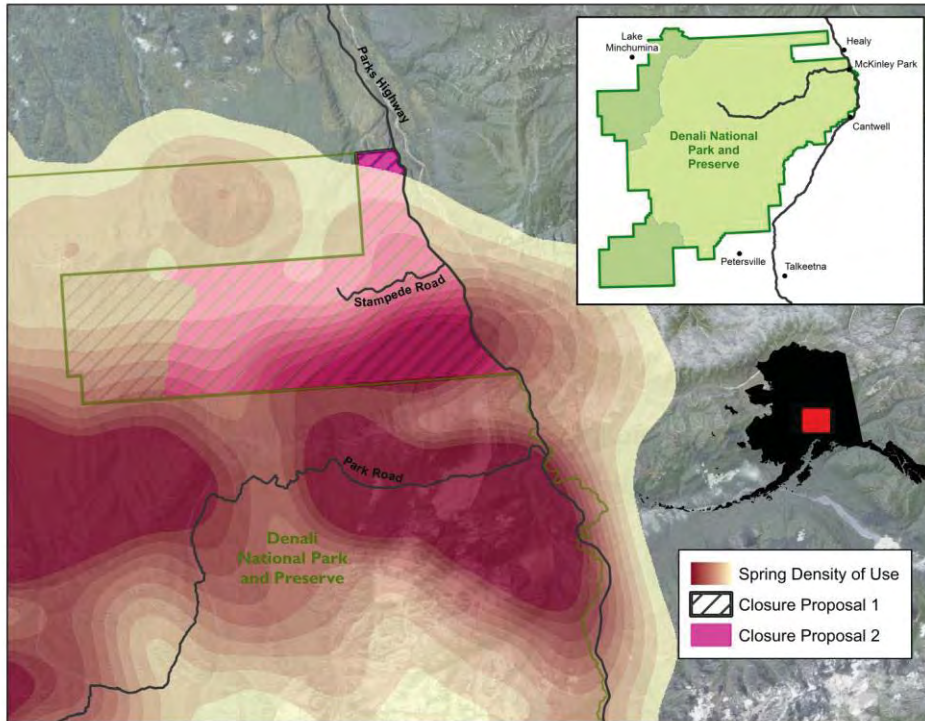


Figure 3. Density of locations of radio collared wolves February – April , 2004-2018 in the northeast corner of Denali National Park and Preserve in interior Alaska, USA.

### References

- Adams, L. G., & G. H. Roffler. 2010. Dynamics of the Denali Caribou Herd, Denali National Park, Alaska: progress report (October 2008 - September 2009).
- Alaska Department of Fish and Game. Alaska Department of Fish and Game Hunting and Trapping data. Fairbanks, AK; 2013
- Asa, C.S. and Valdespino, C., 1998. Canid reproductive biology: an integration of proximate mechanisms and ultimate causes. *American Zoologist*, 38(1), pp.251-259.
- Borg B. L. 2015. Effects of harvest on wolf social structure, population dynamics and viewing opportunities in National Parks. Doctoral Dissertation. University of Fairbanks, Alaska.
- Borg B. L., Brainerd S.M , Meier T. J., Prugh L. R. 2015. Impacts of breeder loss on social structure, reproduction and population growth in a social canid. *J Anim Ecol.* 84: 177–187. doi: 10.1111/1365-2656.12256
- Borg B. L., Arthur S. M., Broman N. A., Cassidy K. A., McIntyre R., Smith D. W. 2016. Implications of Harvest on the Boundaries of Protected Areas for Large Carnivore Viewing Opportunities. *PLoS ONE* 11(4): e0153808. doi:10.1371/journal.pone.0153808
- ECONorthwest 2014. The Economic Importance of Alaska's Wildlife in 2011: Summary Report, Alaska Department of Fish and Game.
- Fix, P. J., Andrew Ackerman and Ginny Fay, 2013, 2011 Denali National Park and Preserve Visit Characteristics. Natural Resource Technical Report NPS/AKR/NRTR—2013/669. National Park Service, Fort Collins, Colorado.

## Proposal 152: Additional Information Submitted by Denali National Park Service

Hayssen, V.D., Van Tienhoven, A. and Van Tienhoven, A., 1993. Asdell's patterns of mammalian reproduction: a compendium of species-specific data. Cornell University Press.

Manning, R. E., and J. C. Hallo. 2010. In Focus: Denali Park Road: The Denali Park Road experience: Indicators and standards of quality. *Park Science* 27(2):33-41.

Mech, L.D. and Knick, S.T., 1978. Sleeping distance in wolf pairs in relation to the breeding season. *Behavioral Biology*, 23(4), pp.521-525.

Mech, L. D. et al. 1998. *The Wolves of Denali*. Minneapolis, Minnesota: University of Minnesota Press.

Rothman, R.J. and Mech, L.D., 1979. Scent-marking in lone wolves and newly formed pairs. *Animal behaviour*, 27, pp.750-760.

Shea, L., & N. Tankersley. (1991). Wildlife watching and Alaska's tourism potential. *Alaska's Wildlife. Alaska Department of Fish & Game. Juneau*,23(2).

Mowry, T. 2013. Study: Wolf Viewing Down Sharply in Denali National Park. [Fairbanks Daily News Miner](#). Fairbanks, Alaska.

Owen, P. A. and Thomas J. Meier. 2009. 2008 Aerial Moose Survey, Denali National Park and Preserve.

Schmidt, J. H., & K.L. Rattenbury. 2013. Reducing Effort While Improving Inference: Estimating Dall's Sheep Abundance and Composition in Small Areas. *The Journal of Wildlife Management*, 77(5), 1048-1058. doi:10.1002/jwmg.557

Western Regional Climate Center. Cooperative Climatological Data Summaries [Internet]. 2015 [cited 5 Mar 2015]. Available: <http://www.wrcc.dri.edu/climatedata/climsum/>