

U.S. SURVEY
No. 5278, ALASKA

LOCATED
BY THE BUREAU OF PUBLIC HIGHWAY
AND
CONSTRUCTION SURVEYING BRANCH
AND
SUBDIVISION OF U.S. LOCATION MEASUREMENT SERVICE

TECHNICAL SYSTEM

ON

COLUMBIA RIVER

LOCATION OF SERVICE BY STATE, LOCATION NO. 10442

CLASS: PUBLIC ASSES

REVISED BY

REVISIONS BY: REVISIONS BY: REVISIONS BY:
DATE: 11/19/73 DATE: 11/19/73 DATE: 11/19/73
BY: J. H. HARRIS BY: J. H. HARRIS BY: J. H. HARRIS

APRIL 21, 1973

AND

APRIL 21, 1973

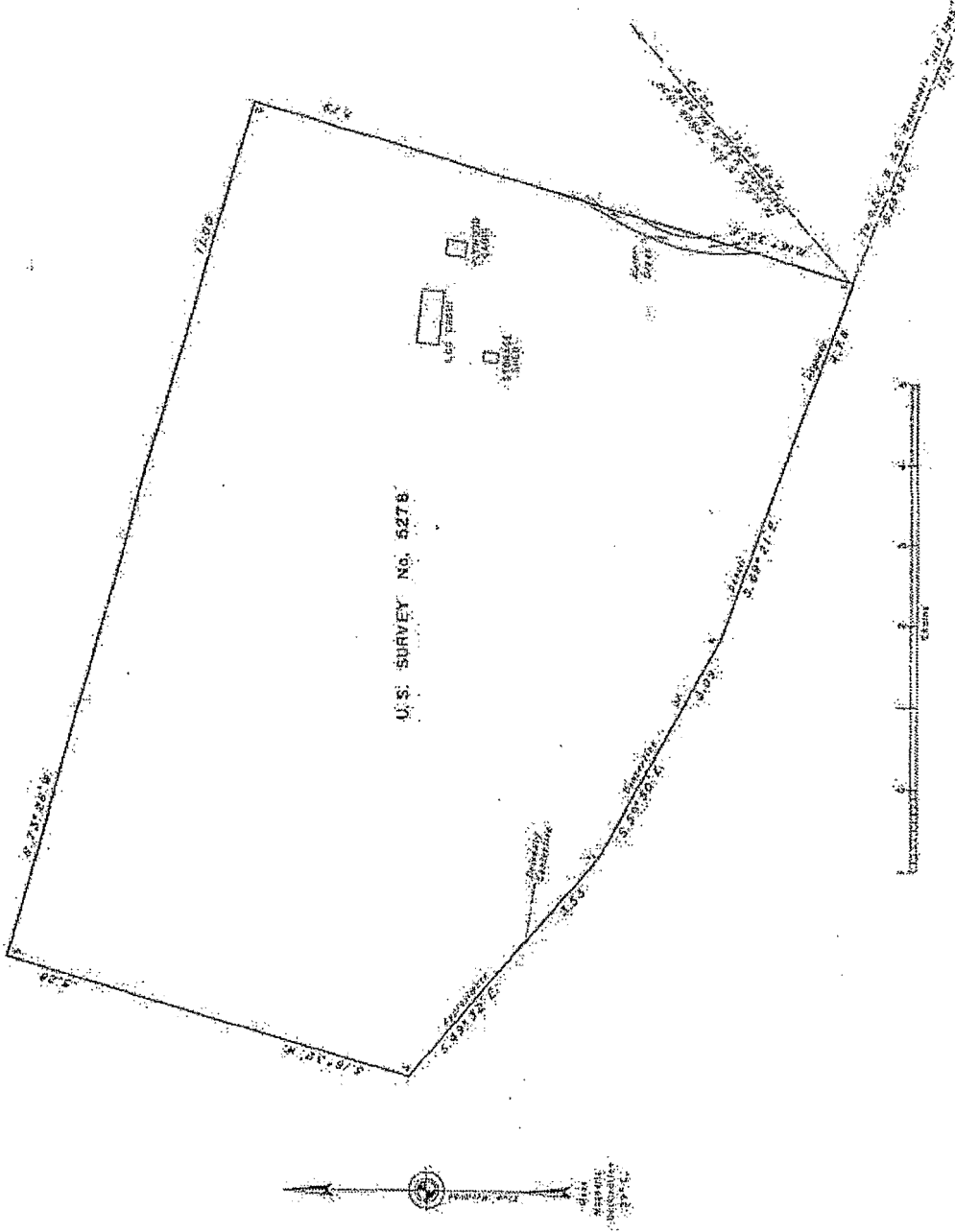
APRIL 21, 1973

UNITED STATES DEPARTMENT OF THE INTERIOR
BUREAU OF LAND MANAGEMENT
WASHINGTON, D.C.

This plat is a technical representation of the above
survey and does not constitute a warranty of accuracy
or a guarantee of title. It is subject to the
provisions of the laws of the State of Alaska and the
Federal Government.

REGISTERED

[Signature]
Chief, Division of Industrial Survey



Submitted by Vince Holten