

# Hugh Smith Lake Sockeye Salmon

Hugh Smith Lake Weir


The action plan goal is to rebuild the Hugh Smith Lake sockeye salmon run to escapement levels that consistently fall within the escapement goal range.

Specific Action Plan Management Recommendations:

- Commercial Fisheries
- Subsistence Fishery
- Sport Fishery

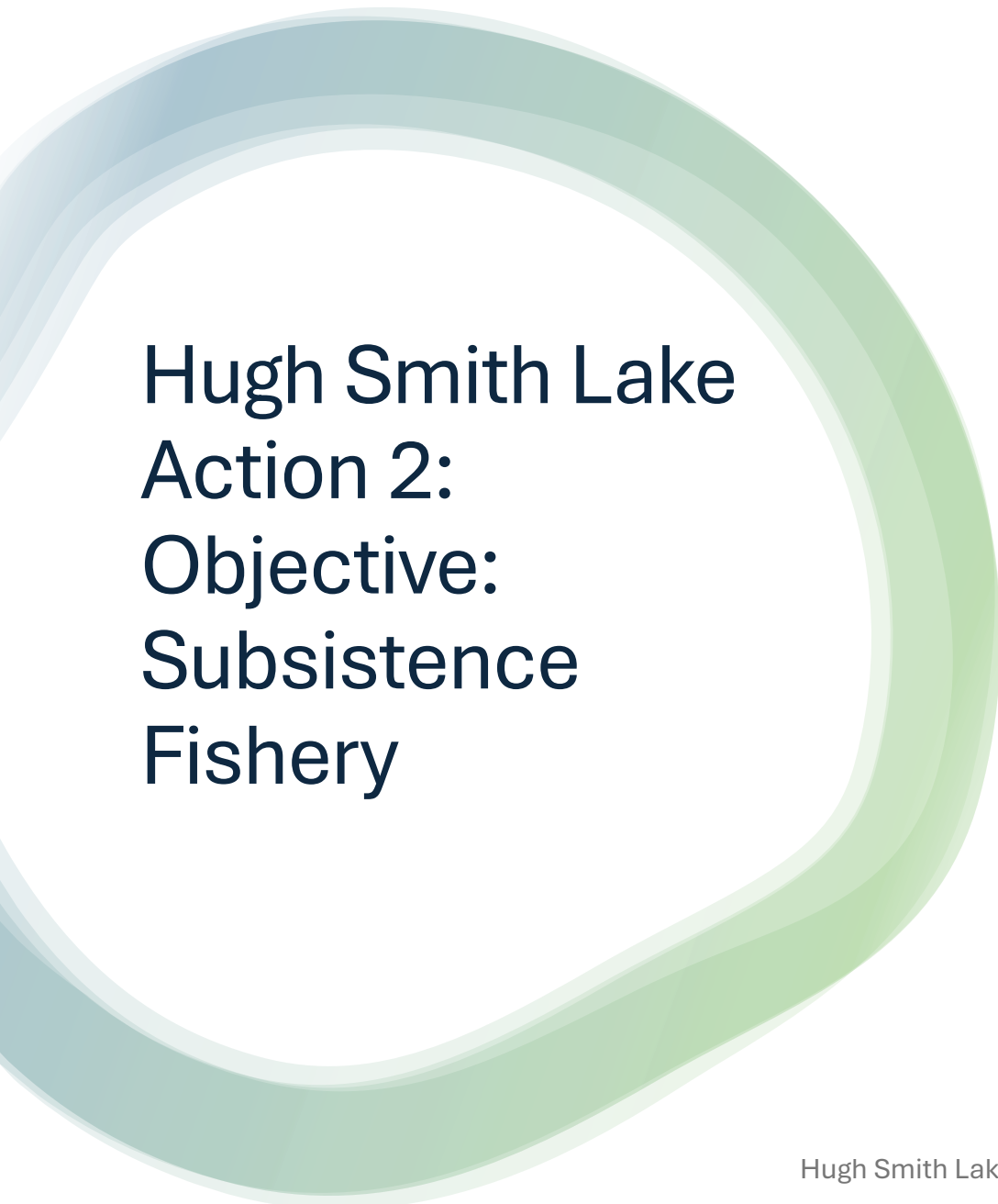
Oral Report:  
RC – 3, Tab 33  
Hugh Smith Lake Sockeye Salmon  
Stock Status and Action Plan:  
RC – 6






## Hugh Smith Lake Action 1: Objective: Reduce commercial harvest

- Option A: No formal prescribed actions.
- Option B: Status Quo (2008, 2019-2024). Implement actions prescribed by the 2003 Hugh Smith Lake action plan.
- Option C: Increased time and area restrictions prescribed in the 2003 Hugh Smith Lake action plan.



## Hugh Smith Lake Action 2: Objective: Subsistence Fishery

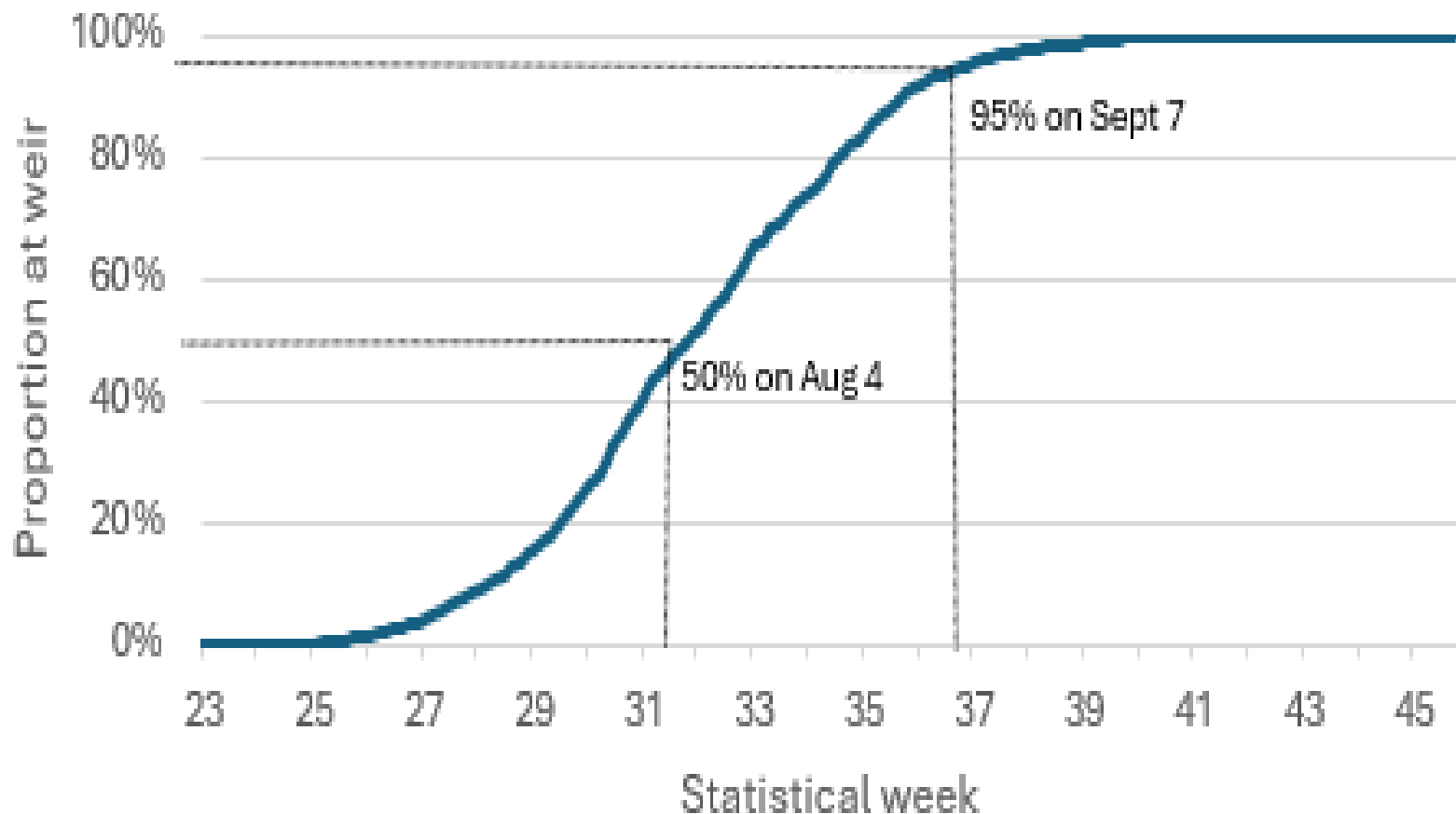
- Option A: Status Quo.
  - Maintain the current subsistence fishery possession limit of 12 sockeye per household with no annual limit.
  - The subsistence harvest represents a very small percentage of the Hugh Smith sockeye harvest.



**Hugh Smith Lake  
Action 3:  
Objective: Reduce  
sport harvest**

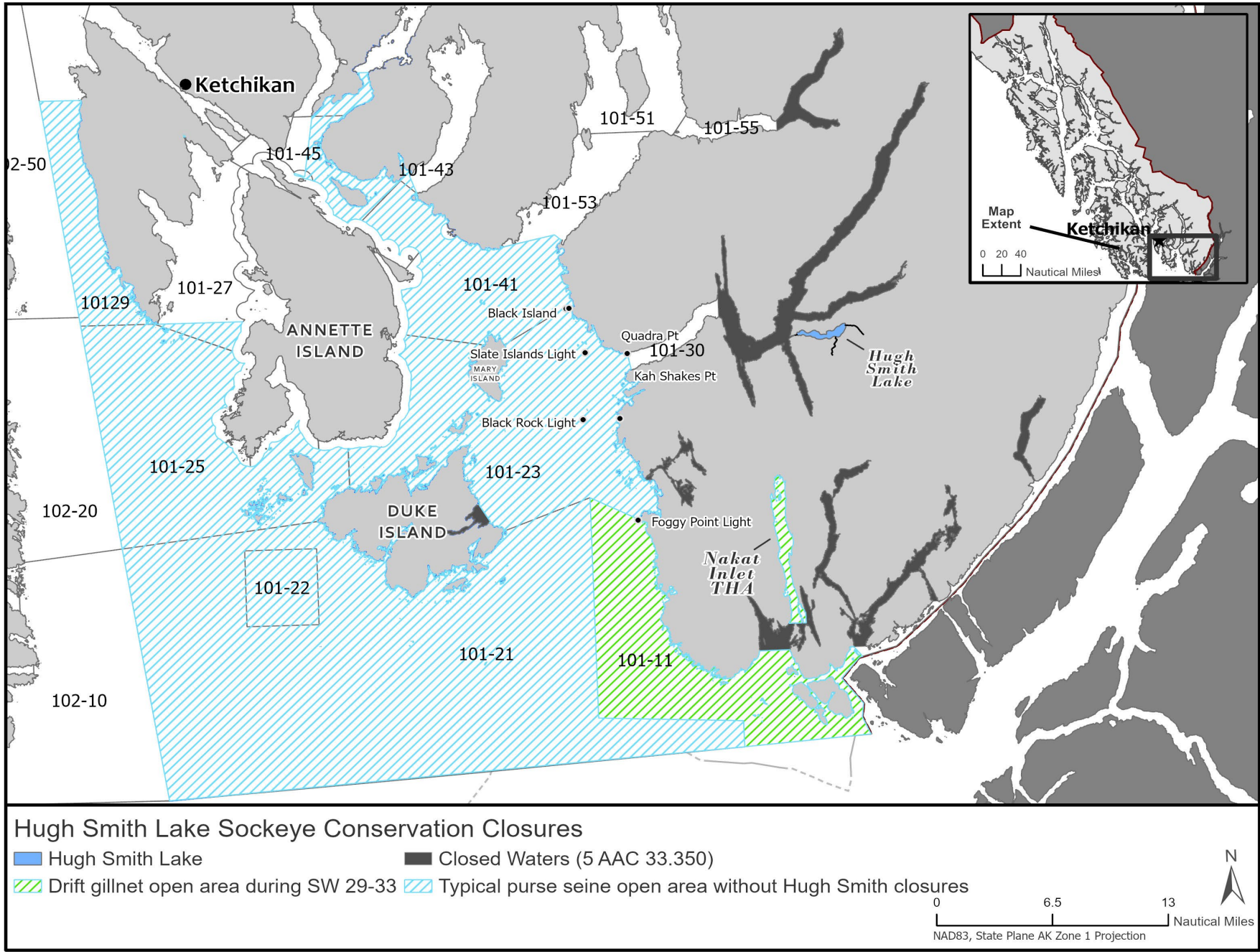
- Option A: Status Quo.
- Option B: Use EO authority to close sport fishing for sockeye salmon at Hugh Smith Lake and the saltwater areas in the Sockeye Creek estuary.

# Average run timing of Hugh Smith Lake Sockeye Salmon (1982-2024)



- The run timing is variable, and this chart shows the average run timing of Hugh Smith sockeye to the weir from 1982-2024.
- This figure has taken dates and translated it to the midpoint of the start of a statistical week which fluctuates up to 6 days.
- The avg. midpoint of the run is Aug 4 (SW 31) with 90% of the run to the weir on Aug. 31 (SW 35).

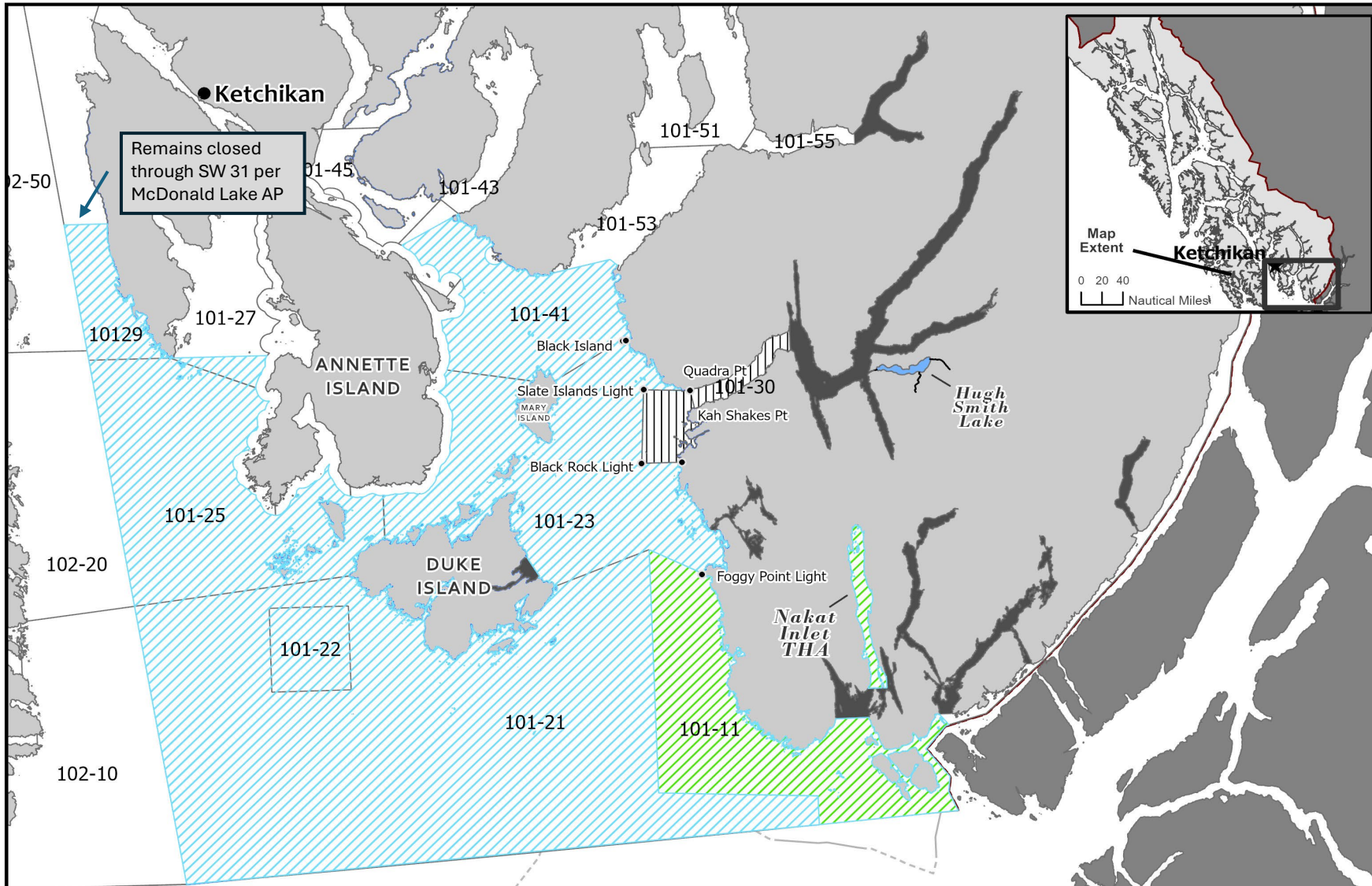




## Commercial Fisheries

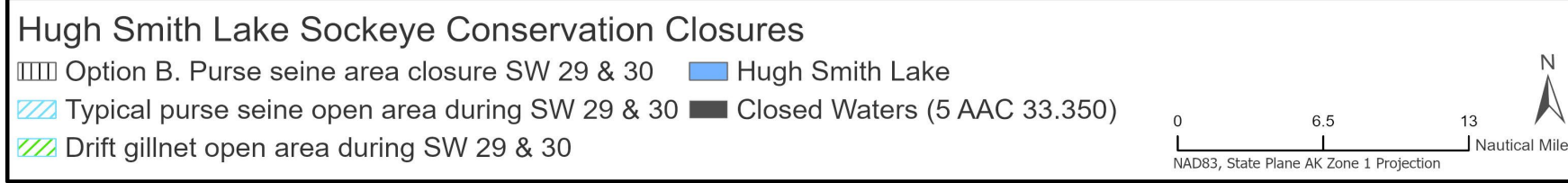
Option A: No prescribed actions.

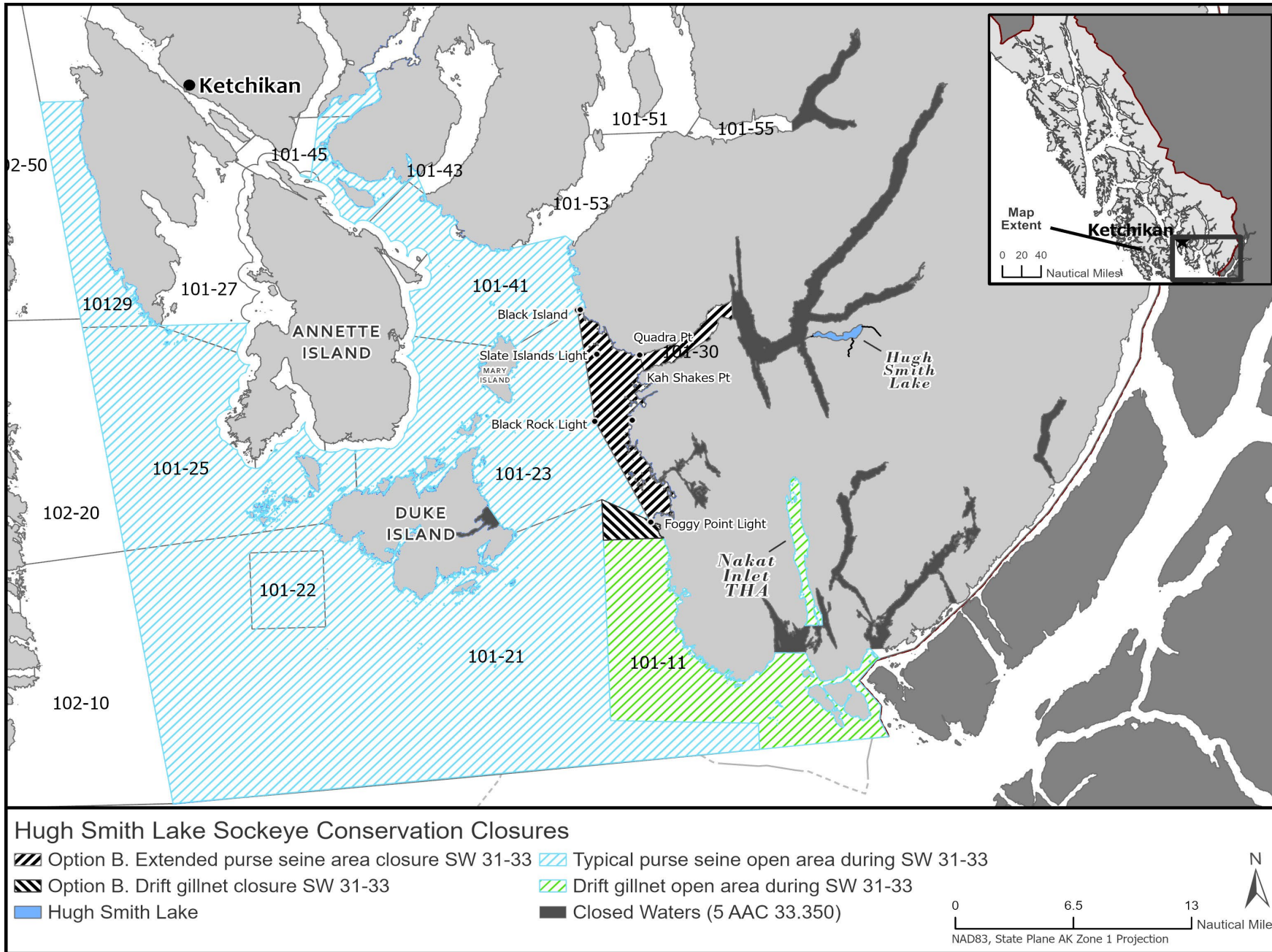
- Use EO authority to manage the commercial fisheries based on overall salmon abundance.
- Continue to take necessary actions in the District 1 purse seine and drift gillnet fishery to achieve the Hugh Smith sockeye escapement goal.



**Commercial Fisheries**  
 Option B: Implement area restrictions from the 2003 board adopted action plan.

- In SW 29-30, the mouth of Boca de Quadra is restricted.



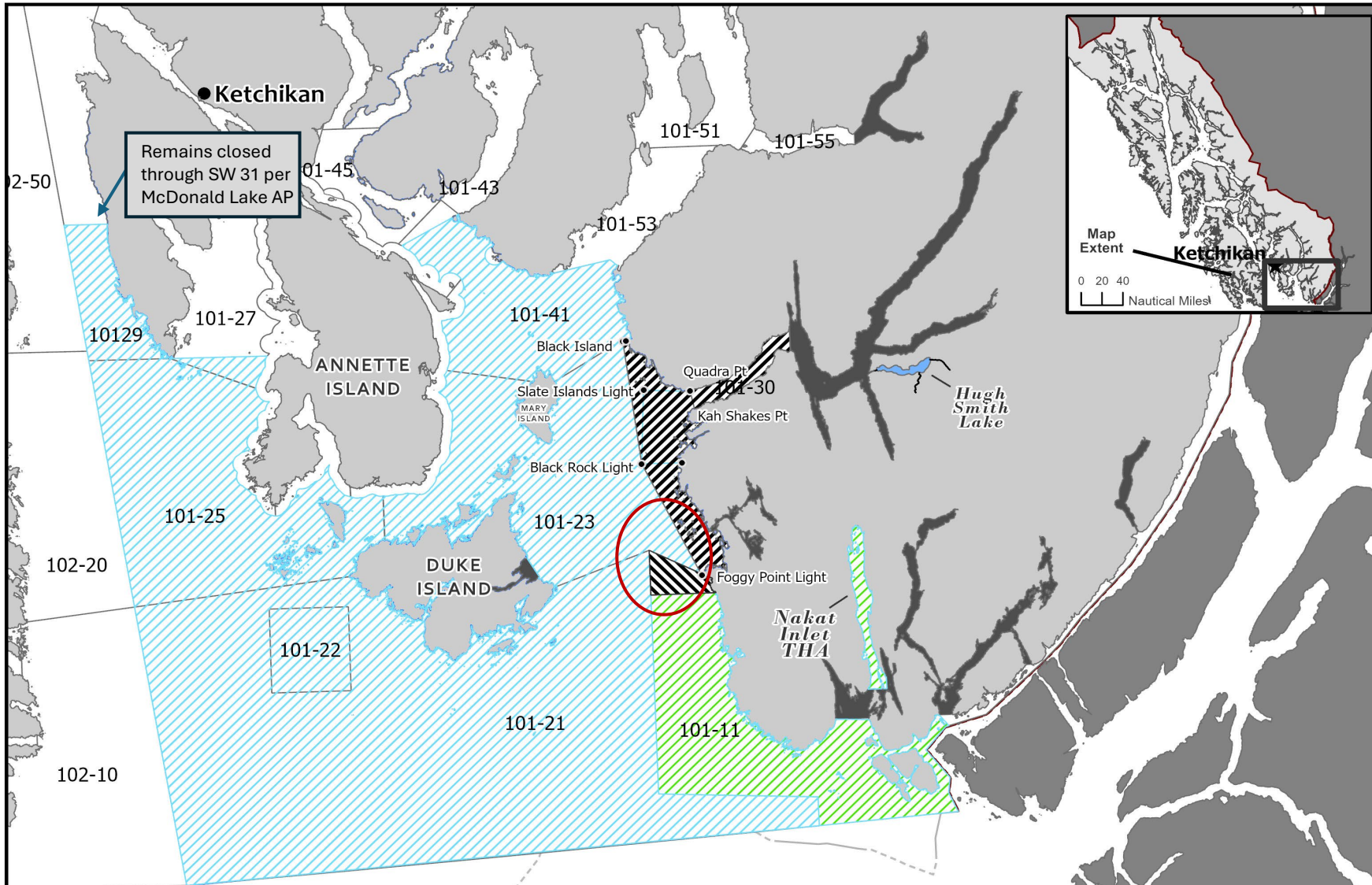


## Commercial Fisheries

Option B: Implement area restrictions from the 2003 board adopted action plan.

- In SW 31-33, the area restriction for purse seine gear expands north to Black Island, then south to Black Rock Light, then south to Foggy Point light.
- One mile of shoreline is closed south of Foggy Point to the drift gillnet fleet in 101-11.





## Commercial Fisheries

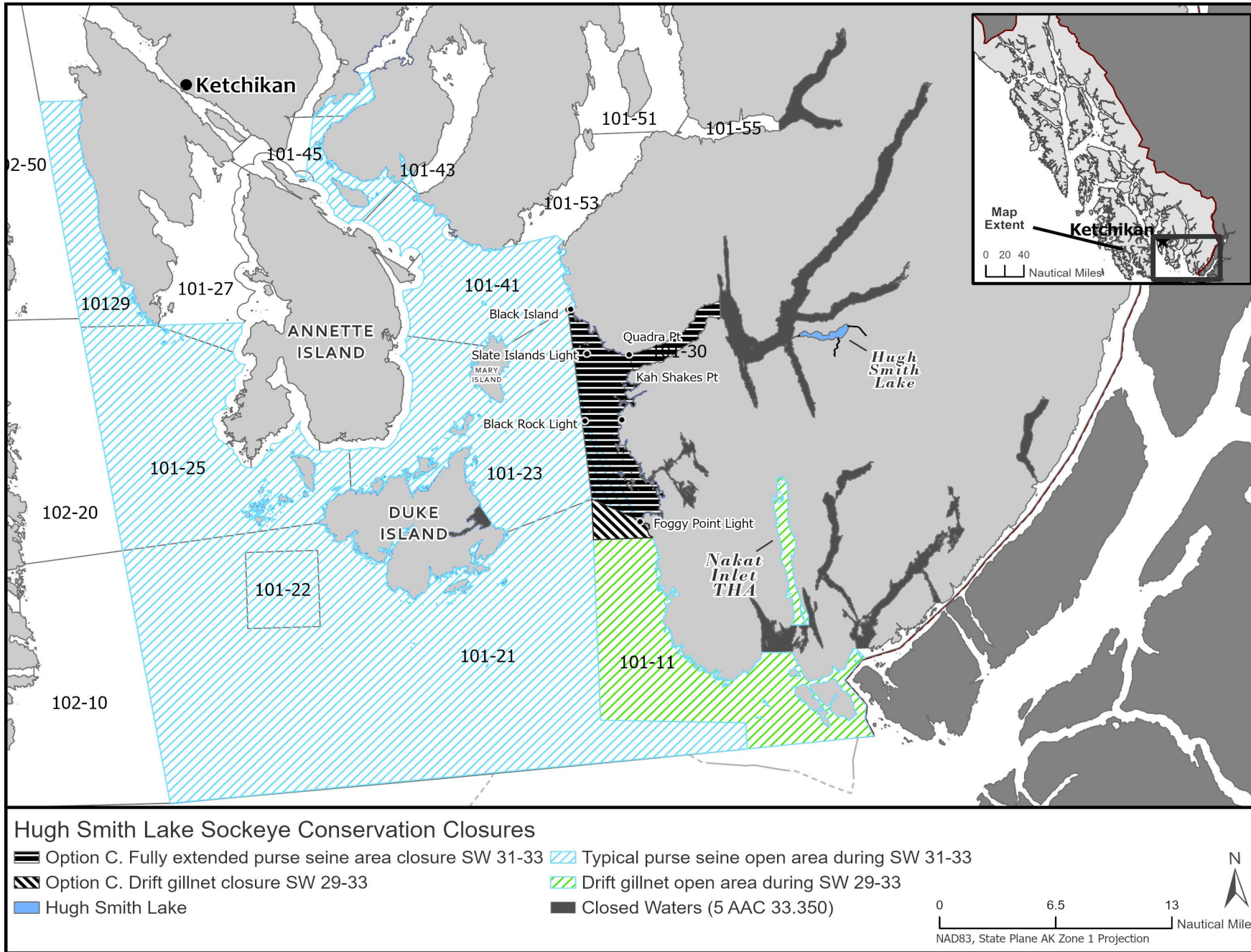
Option C: Implement area restrictions from the 2003 board adopted action plan.

- In SW 29-30, the area restrictions for purse seine and drift gillnet begin with the largest area restriction beginning in SW 29.

**Hugh Smith Lake Sockeye Conservation Closures**

Option C. Extended purse seine area closure SW 29 & 30	Typical purse seine open area during SW 29 & 30
Option C. Drift gillnet closure SW 29-33	Drift gillnet open area during SW 29-33
Hugh Smith Lake	Closed Waters (5 AAC 33.350)

0 6.5 13 Nautical Miles  
NAD83, State Plane AK Zone 1 Projection



## Commercial Fisheries

Option C: Implement area restrictions from the 2003 board adopted action plan.

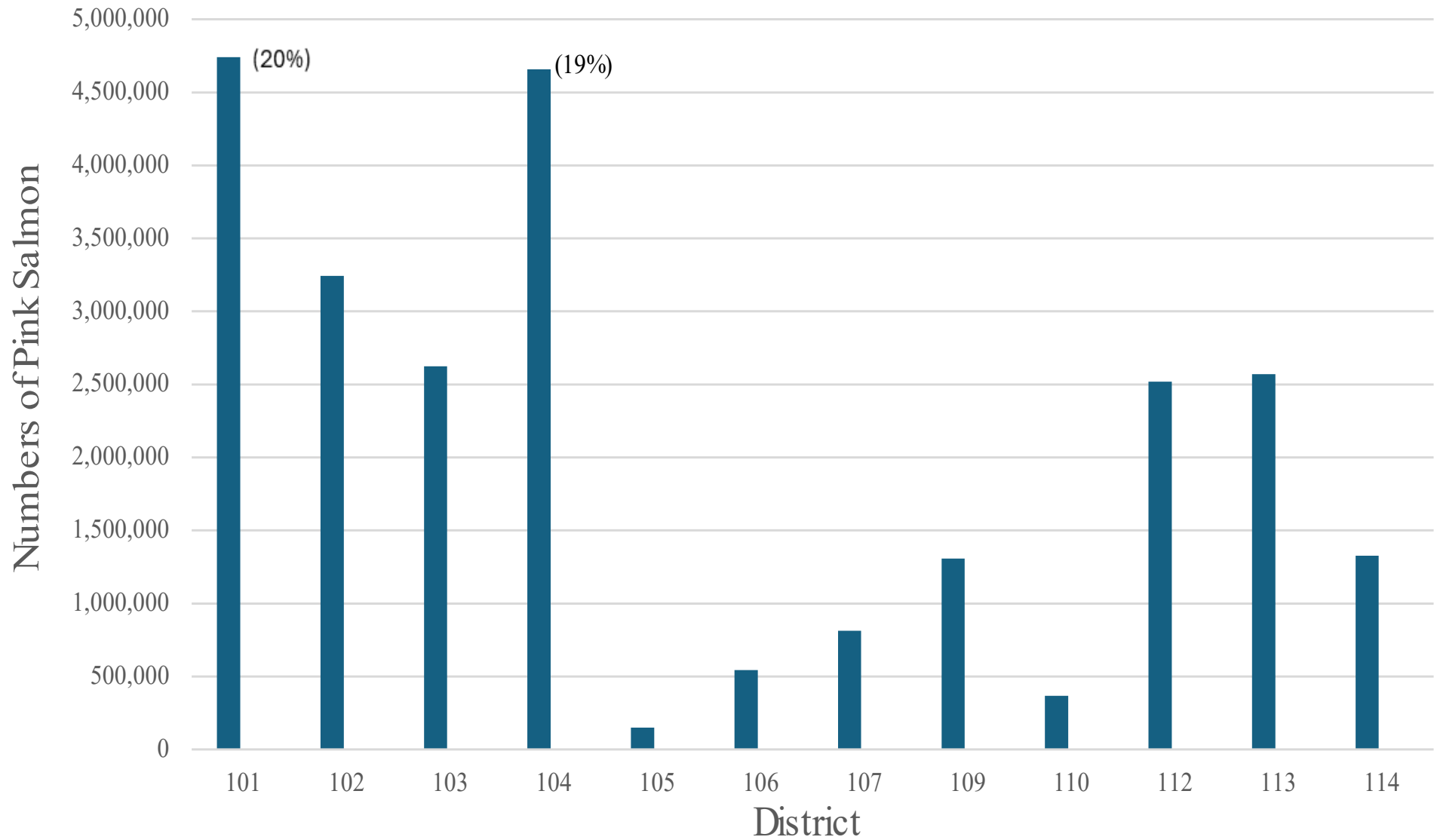
- In SW 29-30, the area restrictions for purse seine and drift gillnet begin with the largest area restriction beginning in SW 29.
- In SW 31-33, the purse seine area extends due south from Black Rock Light, then east to Foggy Point.

# District 1 Commercial Purse Seine Harvest by Species

Year	Sockeye	Hugh Smith Sockeye harvest estimate	Coho	Pink	Chum	Total Salmon Harvest	Percent of sockeye in Total District 1 harvest	Percent of Hugh Smith sockeye in Total District 1 sockeye harvest	Percent of Hugh Smith sockeye in Total District 1 salmon harvest
2014	75,378	6,713	52,762	7,292,343	151,505	7,578,701	1.0%	8.9%	0.09%
2015	78,414	13,433	18,170	1,485,776	578,489	2,174,282	3.6%	17.1%	0.62%
2016	95,134	22,379	29,083	4,750,752	309,695	5,207,043	1.8%	23.5%	0.43%
2017	15,370	4,768	11,379	1,067,716	61,028	1,160,261	1.3%	31.0%	0.41%
2018	22,993	2,012	8,513	630,185	120,995	784,698	2.9%	8.8%	0.26%
2019	38,093	3,979	24,809	3,507,893	224,564	3,799,338	1.0%	10.4%	0.10%
2020	40,955	1,489	10,764	1,275,244	72,408	1,400,860	2.9%	3.6%	0.11%
2021	94,541	1,209	56,634	9,856,957	200,938	10,210,279	0.9%	1.3%	0.01%
2022	49,943	3,555	25,890	5,782,832	203,626	6,065,846	0.8%	7.1%	0.06%
2023	147,355	7,251	45,377	10,531,342	1,144,913	11,876,238	1.2%	4.9%	0.06%
2024	74,807	7,746	43,119	5,979,724	658,211	6,763,607	1.1%	10.4%	0.11%
Average	66,635	6,776	29,682	4,741,888	338,761	5,183,741	1.7%	11.6%	0.21%

\* 2014 being the first year for fully transitioning into GSI for stock Identification.

# Southeast Alaska Traditional Purse Seine Pink Salmon Harvest 10 yr avg Harvest by District



# Keta River Aerial Survey Peak Counts - Pink Salmon

