

Taku and King Salmon Rivers King Salmon Conservation Measures

Dan Teske, Grant Hagerman, Scott Forbes
Oral Report RC3, Tab 31

Written Report:

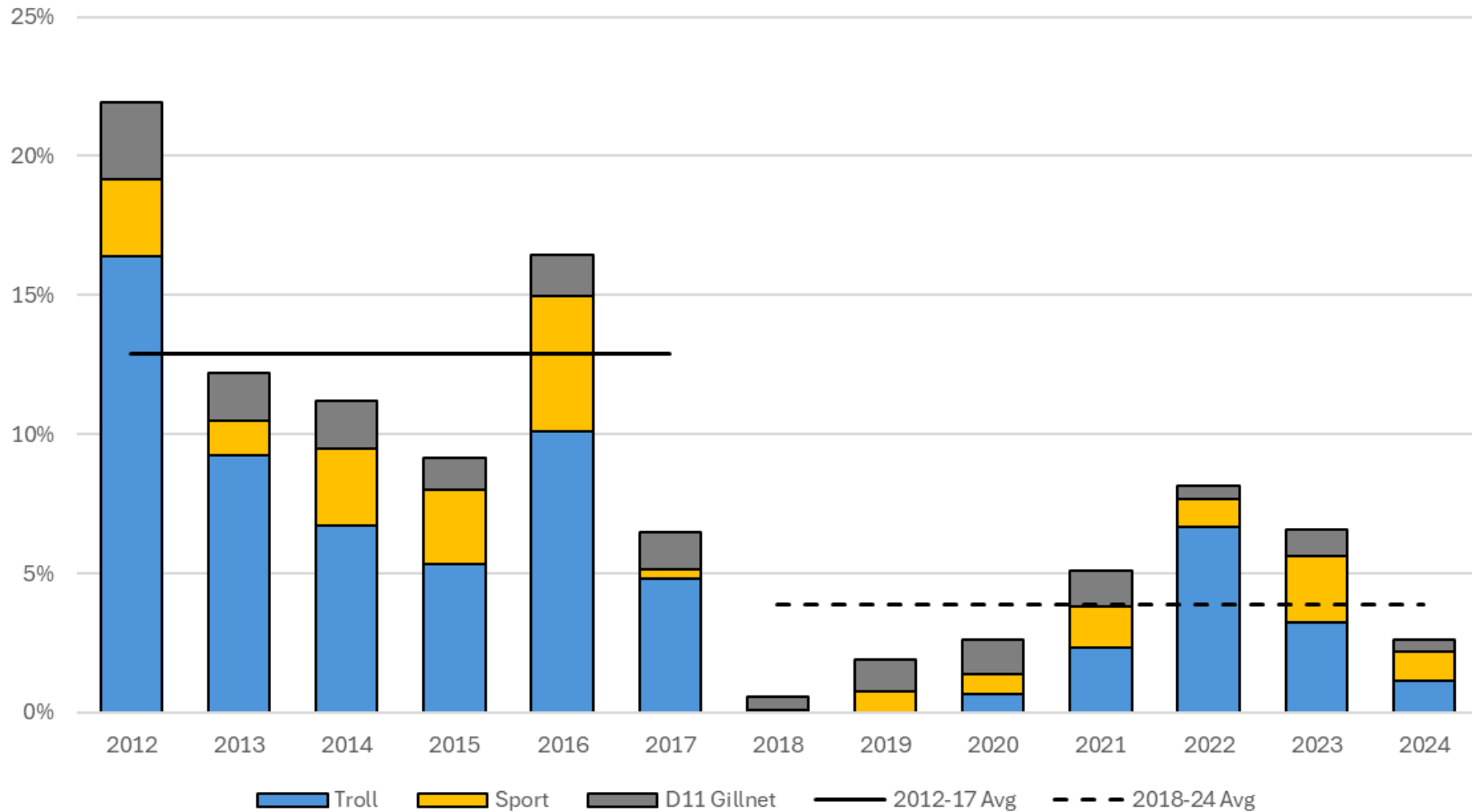
Taku and King Salmon Rivers Chinook Salmon Stock Status and Action Plan, 2025 (RC4)



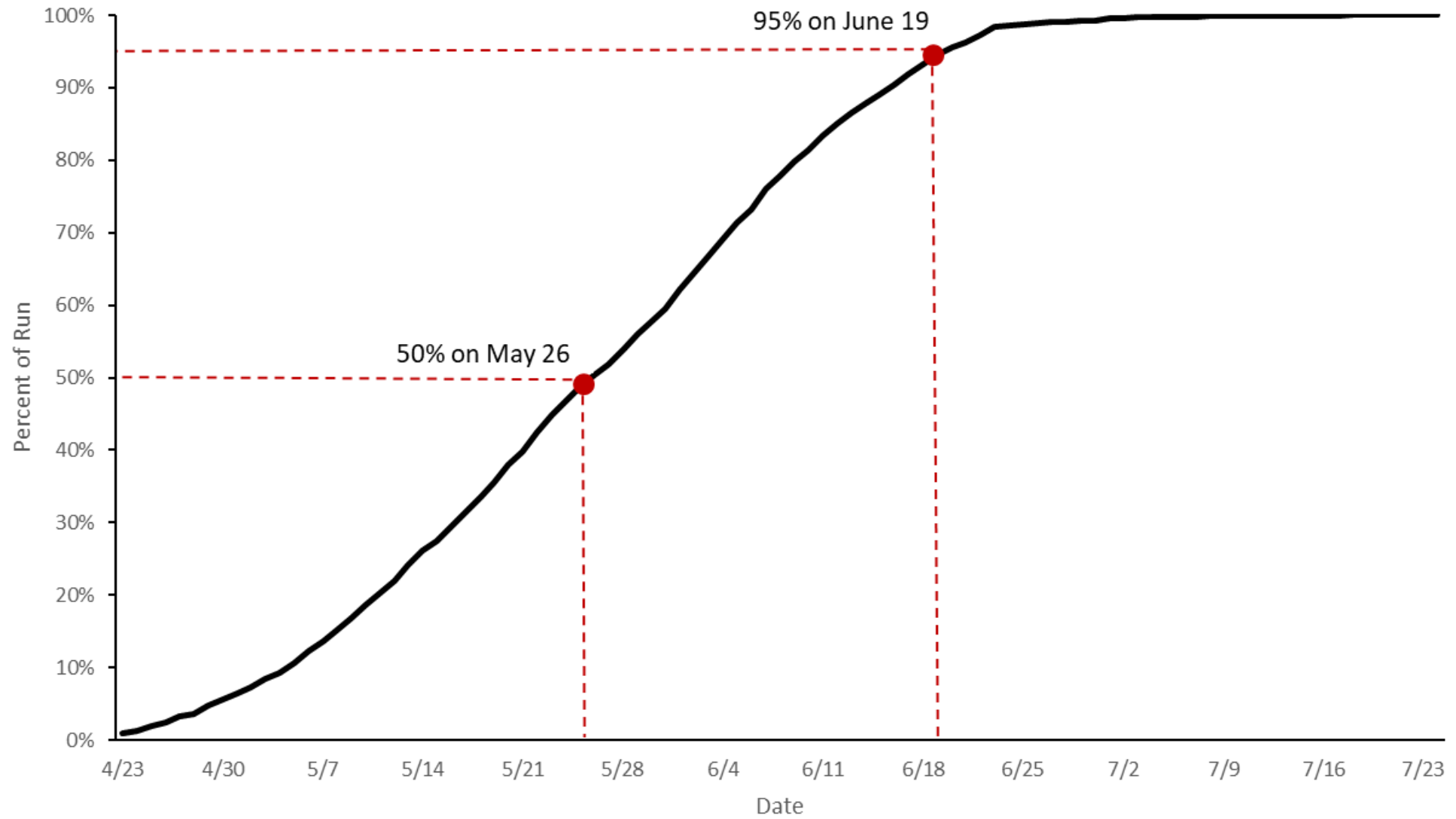
Timeline of Recent King Salmon Conservation Efforts in Northern Southeast Alaska Fisheries

- 2012-2017 – Various management actions in commercial drift gillnet, purse seine, and troll, along with sport, subsistence, and personal use fisheries to reduce harvest of king salmon returning to Taku, Chilkat, and King Salmon Rivers.
- 2018 – Board adopts Chilkat and King Salmon Rivers King Salmon AP with more comprehensive restrictions across all fisheries. Management actions for Chilkat and King Salmon Rivers also reduced harvest of Taku River king salmon.
- 2022 – Board adopts Northern SEAK Chinook Salmon AP which includes Taku River.
- 2024 – Department recommends continued SOC designations for Taku and King Salmon Rivers and remove SOC designation for Chilkat River.

Annual Harvest Rate of Taku River Large King Salmon Run by Regional Troll, Sport, and District 11 Gillnet Fisheries, 2012-2024



Average Run Timing of Taku River Large King Salmon Through Taku Inlet, 2015-2024

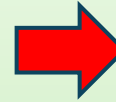
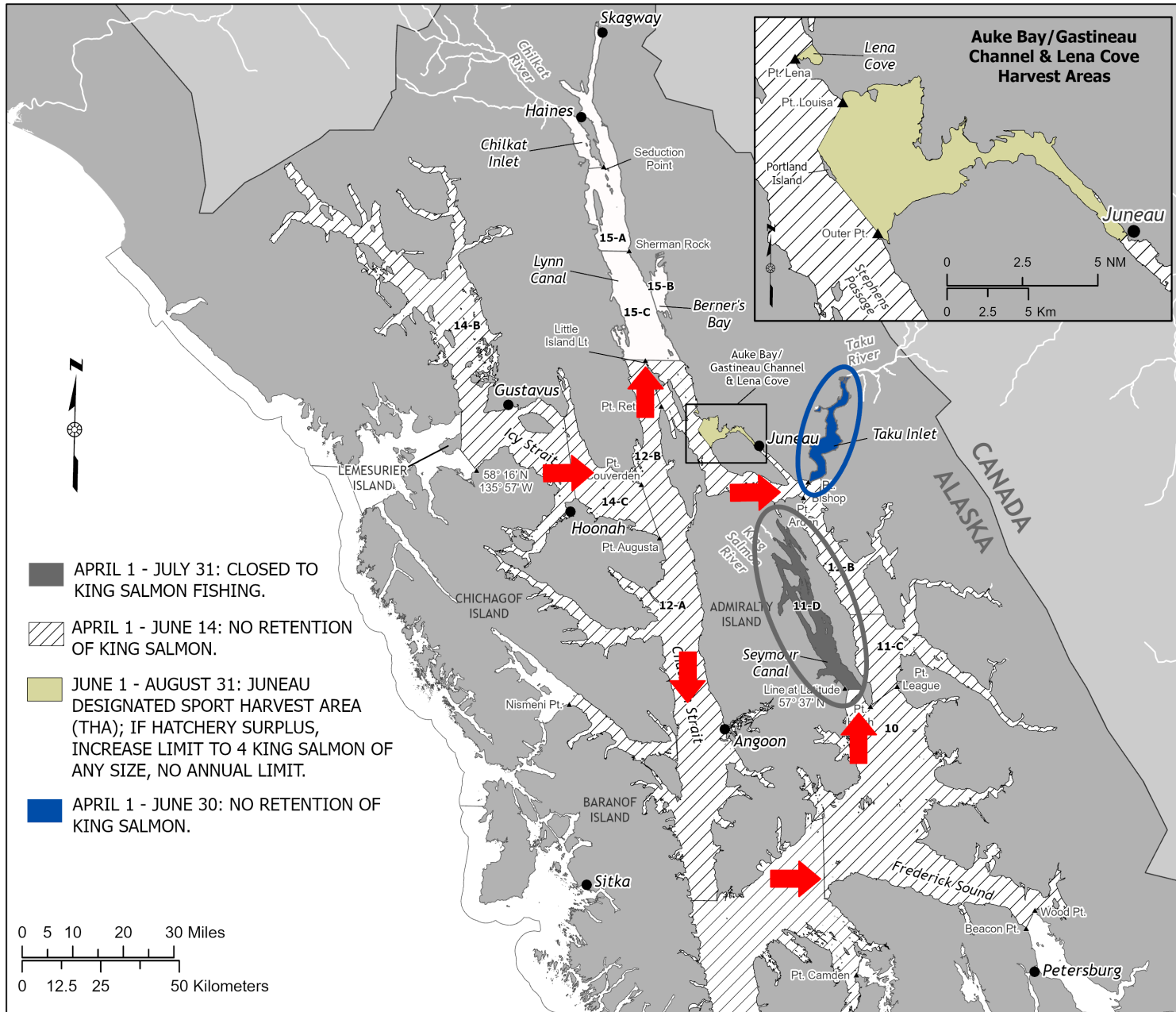


Sport Fishery Management Actions

Continue to manage per 2022 action plan to reduce the harvest of Taku and King Salmon Rivers king salmon.

- Use EO authority to implement restrictions in Districts 9 through 14 that are nearly identical to those implemented from 2022 through 2024.
- The Chilkat River stock was delisted and therefore the District 15 restrictions have been removed. The department will continue to use EO authority to manage District 15 to achieve the Chilkat River king salmon biological escapement goal.
- Regional king salmon regulations established under the *Southeast Alaska King Salmon Management Plan* (5 AAC 47.055) would apply in the restricted areas during the remainder of the year when fishing is allowed.

Sport Fishery Management Actions



MIGRATION CORRIDOR

- No king salmon retention April 1 – June 14



TAKU INLET TERMINAL AREA

- No king salmon retention April 1 – June 30



KING SALMON RIVER TERMINAL AREA

- Closed to sport fishing April 1 – July 31

Troll Fishery Management Actions

Continue to manage under provisions of the *Northern Southeast Alaska King Salmon Stock Status and Action Plan, 2022*:

- All inside waters of the SEAK winter troll fishery close by EO on March 15. Select waters of Districts 3–5, 9, 13, 14, and 183 may remain open between March 16 and April 15.
- Northern SEAK spring troll open May 1, but limited to waters of Districts 13 and 183, with all other districts remaining closed through June 30.
- All THA openings in northern Southeast delayed until June 1.
- The Districts 9, 10, 12, and 14 enhanced chum salmon fishery openings delayed until June 15 and closed to the retention of king salmon.

Conservation measure supplemental to 2022 action plan:

- All waters of Section 11-D (Seymour Canal) remain closed to commercial trolling July 1 – 31.

Troll Fishery Management Actions

CLOSED to troll gear from March 16-June 30

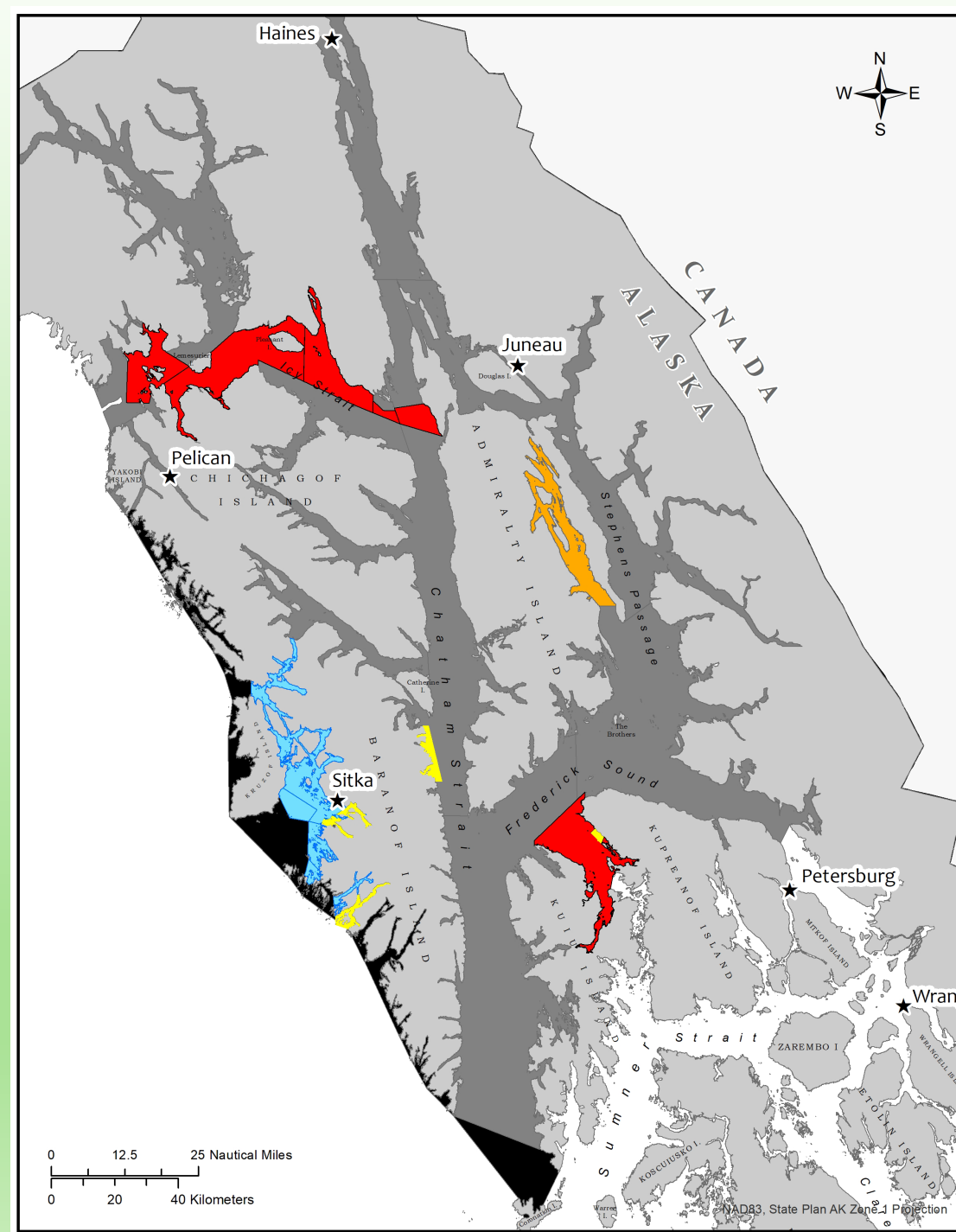
Late Winter Troll: May remain open March 16-April 15

Spring Troll Chum salmon areas: Open June 15-30, CLOSED to king salmon retention

Section 11-D (Seymour Canal): CLOSED to troll gear March 16-July 31

Spring Troll king salmon areas: Open May 1-June 30

NSEAK Troll THA's: Open June 1



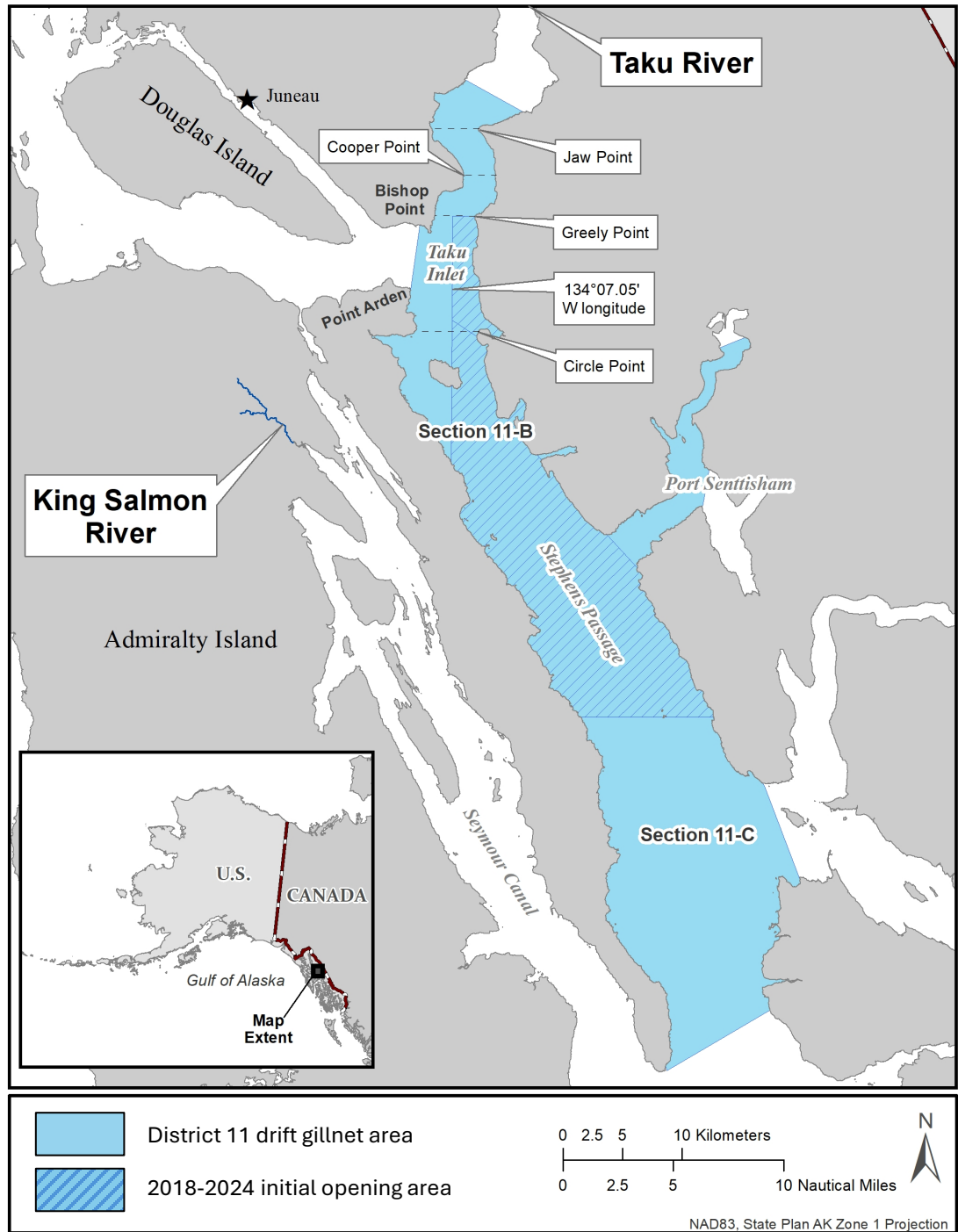
District 11 Drift Gillnet Fishery Management Actions

Option A – 2022 AP

- 2 days/week for first 3 to 4 openings.
- Specific area restrictions for first 4 to 5 openings.
- Mesh restriction and night closures for first 2 to 3 openings.
- Section 11-C closed for first 4 to 5 openings.

Option B – Preferred

- 2 days/week for initial opening and 2 day starts for next 2 openings.
- Area restrictions for first 3 openings.
- Mesh restriction and night closures for first 2 openings.
- Section 11-C closed through second week of July.



Annual Harvest Estimates of Taku River Large King Salmon in the District 11 Drift Gillnet Fishery, 2012-2024

Year	Taku River Large King Salmon
2012	668
2013	356
2014	489
2015	292
2016	159
2017	143
2018	31
2019	124
2020	189
2021	151
2022	54
2023	141
2024	99
2012-2024 Avg	223
2018-2021 Avg	124
2022-2024 Avg	98

Questions?

