

Southeast Alaska/Yakutat Commercial Salmon Troll Fishery

Alaska Board of Fisheries

Jan 28–Feb 9, 2025

Ketchikan

RC 3 – Tab 27

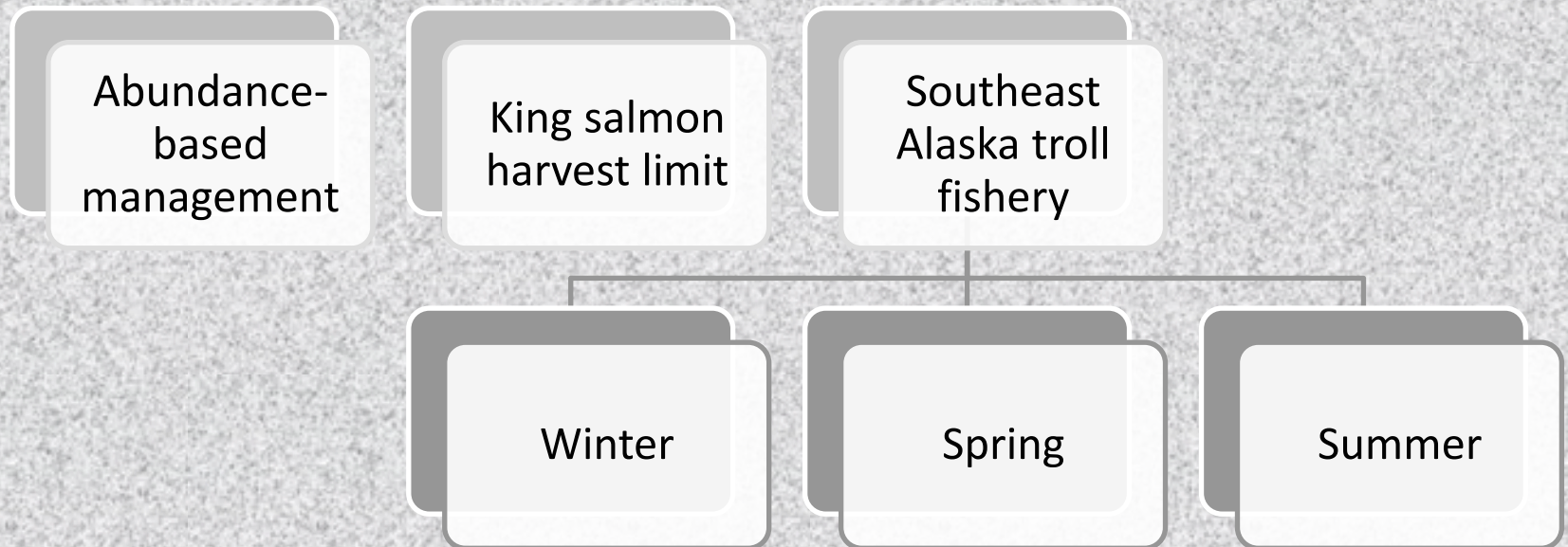
Grant Hagerman

Regional Salmon Troll Management Biologist

Division of Commercial Fisheries



Overview



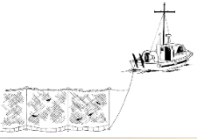
King Salmon Allowable Catch

- Abundance-based management, fisheries managed to provisions of the new 2019-2028 Pacific Salmon Treaty (treaty) agreement.
- Annual all-gear total allowable catch determined for Southeast Alaska/Yakutat (SEAK) based on measures of coastwide Chinook salmon abundance using the abundance index (AI) output from the Pacific Salmon Commission Chinook model.
- The AI is translated to a pre-season annual catch limit from an allowable catch table defined and in accordance with Chapter 3 of the treaty .
- Treaty harvest limit is allocated among gear groups with the Chinook accounting year spanning October-September of the following year.

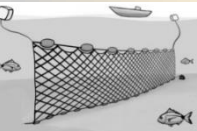
King Salmon Allocation



Purse Seine = 4.3% of all-gear treaty harvest limit



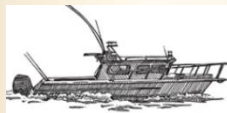
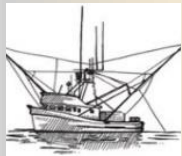
Drift Gillnet = 2.9% of all-gear treaty harvest limit



Set Gillnet = 1,000 fish

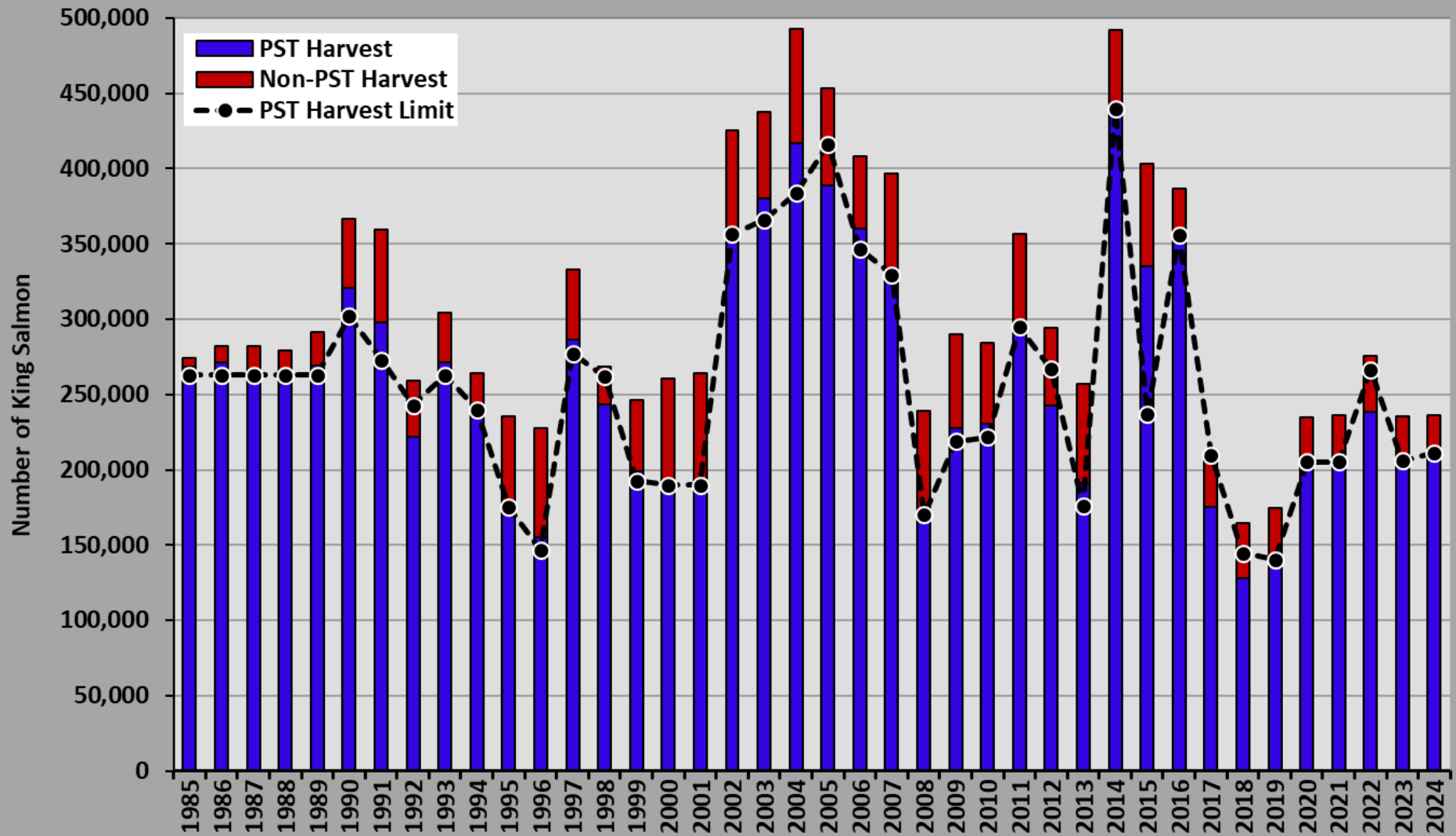


Net gear total subtracted from all-gear harvest limit



Remainder split between troll and sport fisheries: 80%-Troll; 20%-Sport

All-Gear King Salmon Harvest

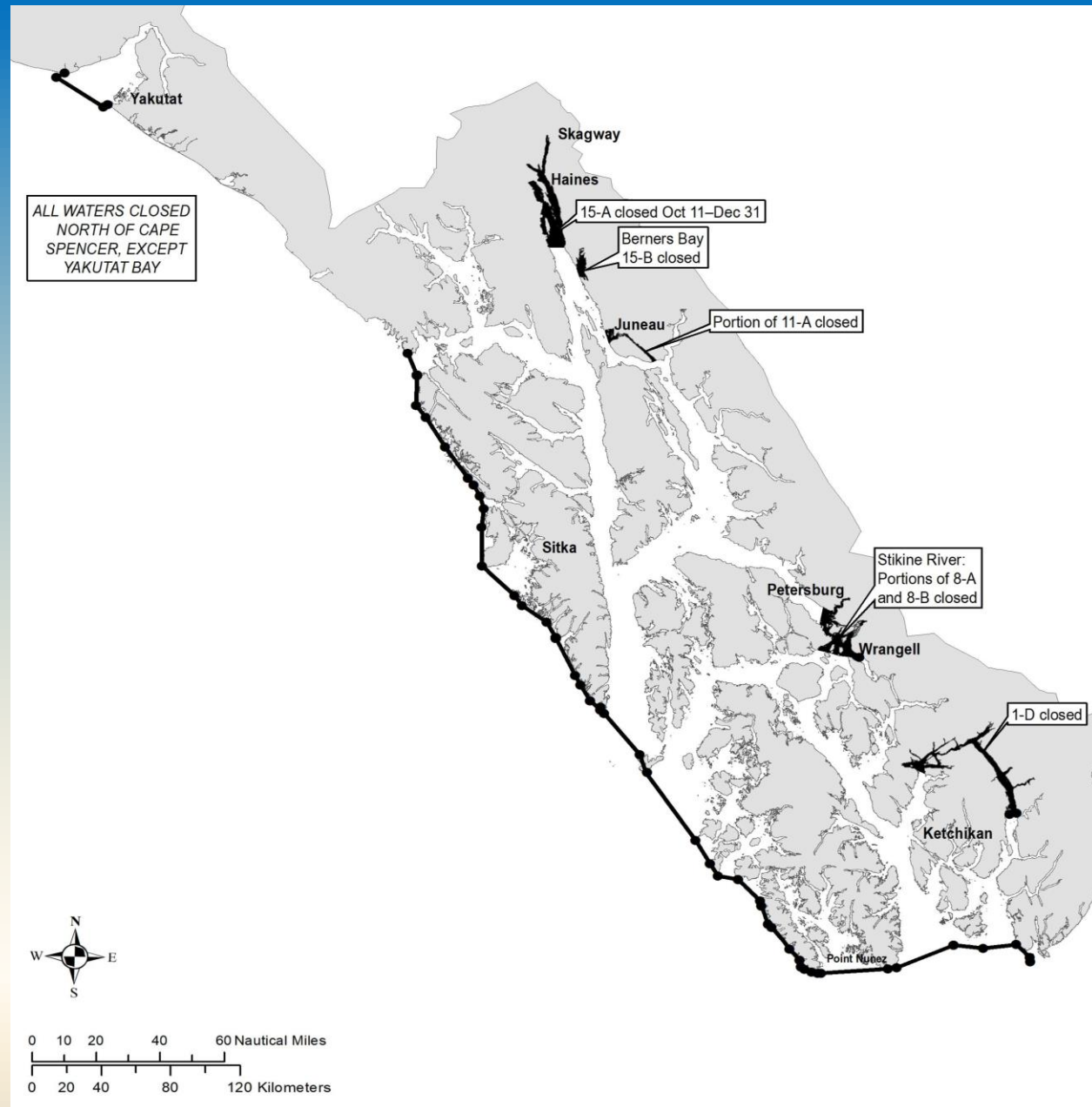


Southeast Alaska Troll Fishery

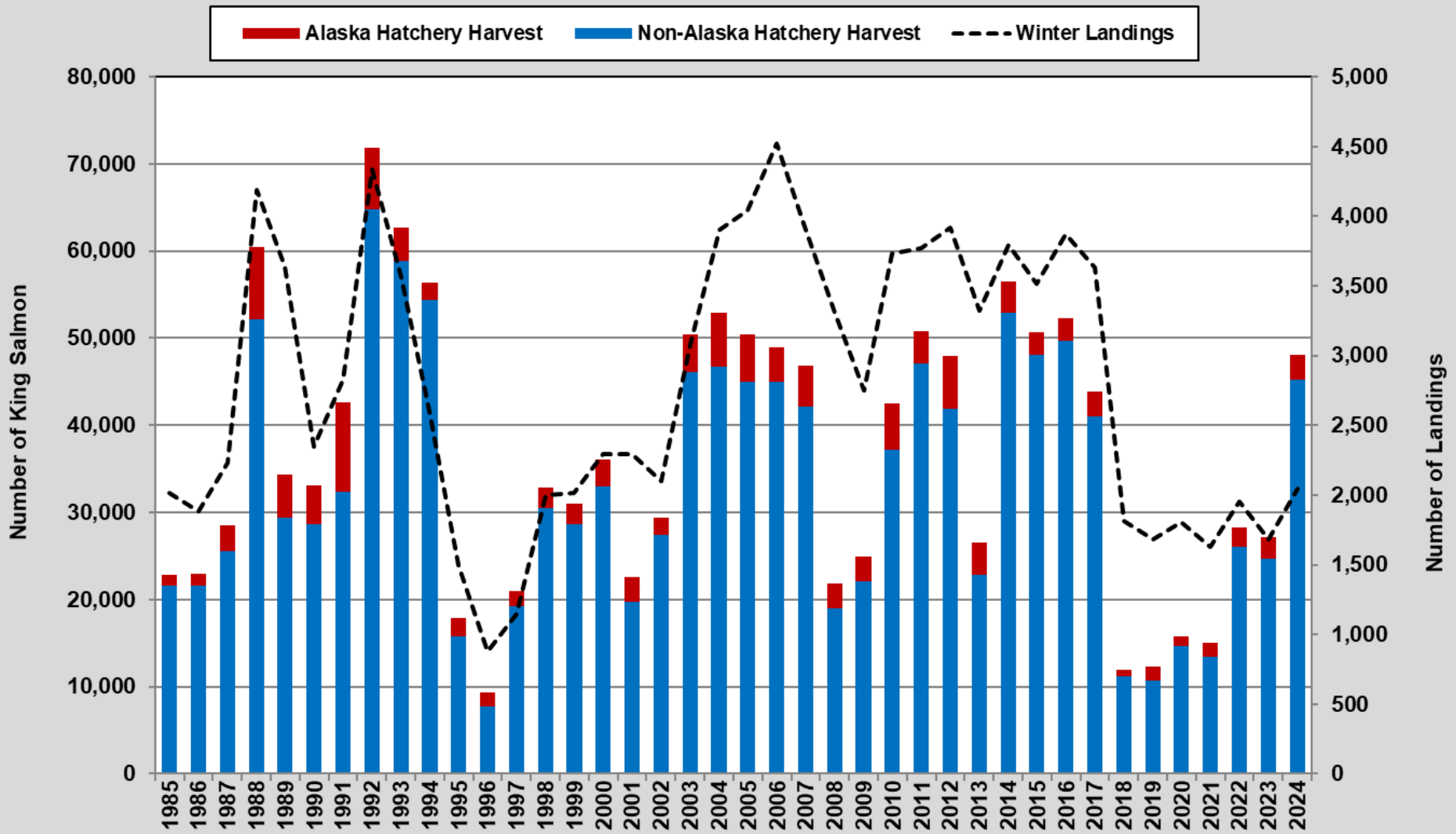
- Primarily targets king and coho salmon
- Chum salmon also targeted in recent years
- 20-yr average of 1,000 troll permits fished annually, has declined each of last 10-years to a record low in 2024.
- Troll fishery open almost year-round
 - Winter fishery
 - Spring Fishery
 - Summer Fishery

Winter King Salmon Fishery

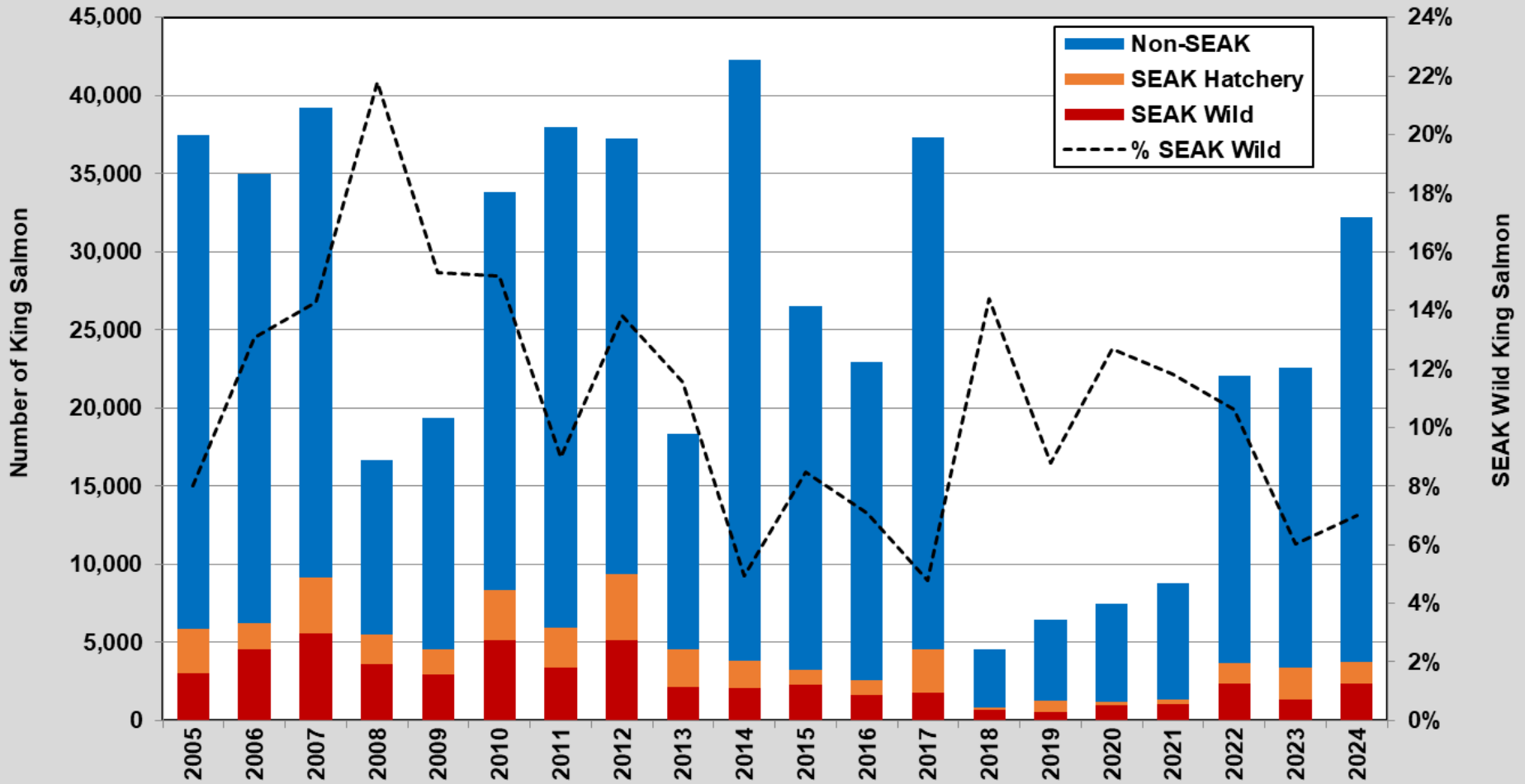
- Open October 11-April 30, or until Guideline Harvest Level is reached
- Target king salmon, restricted to inside winter boundary line, or “surflines”



Winter King Salmon Fishery

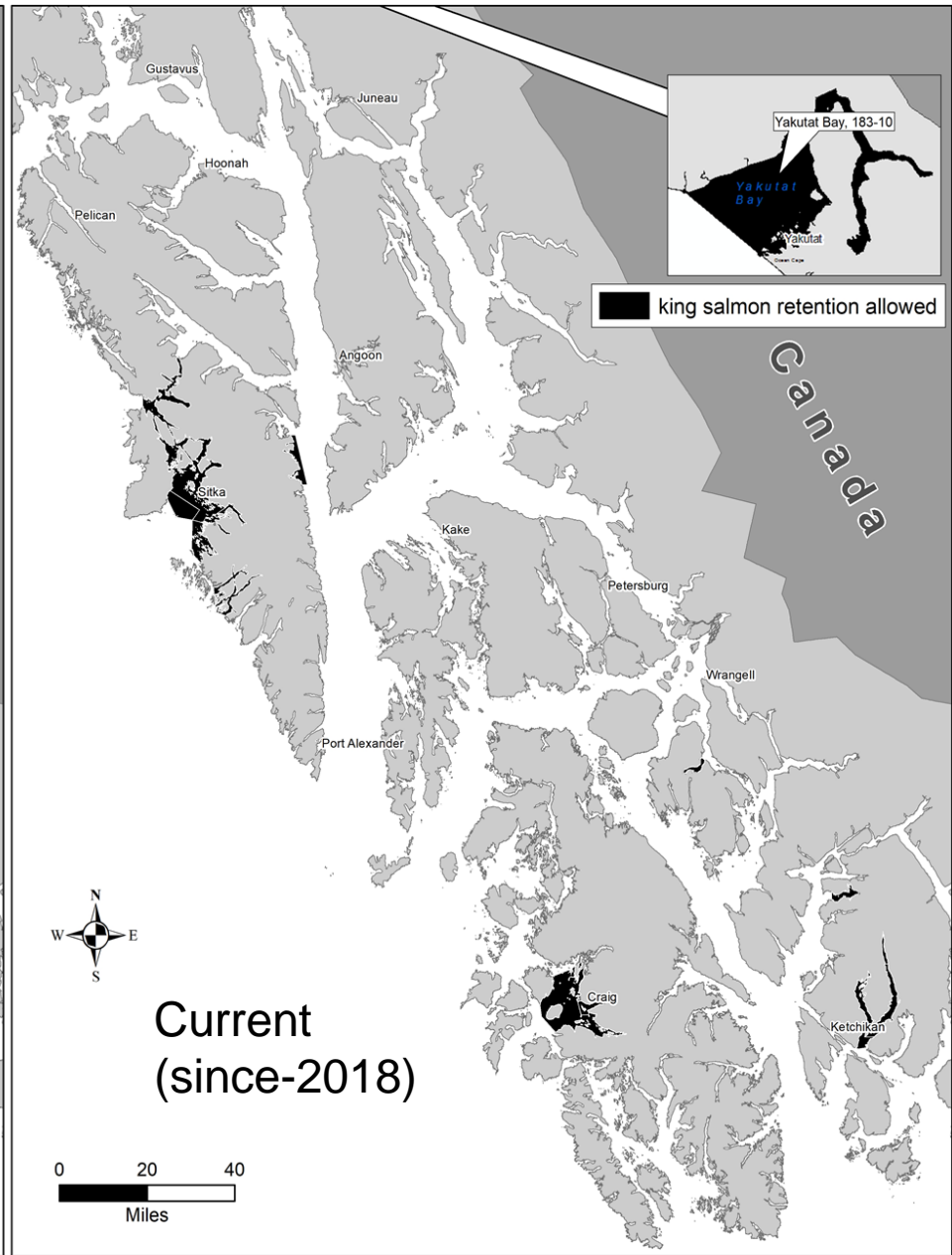
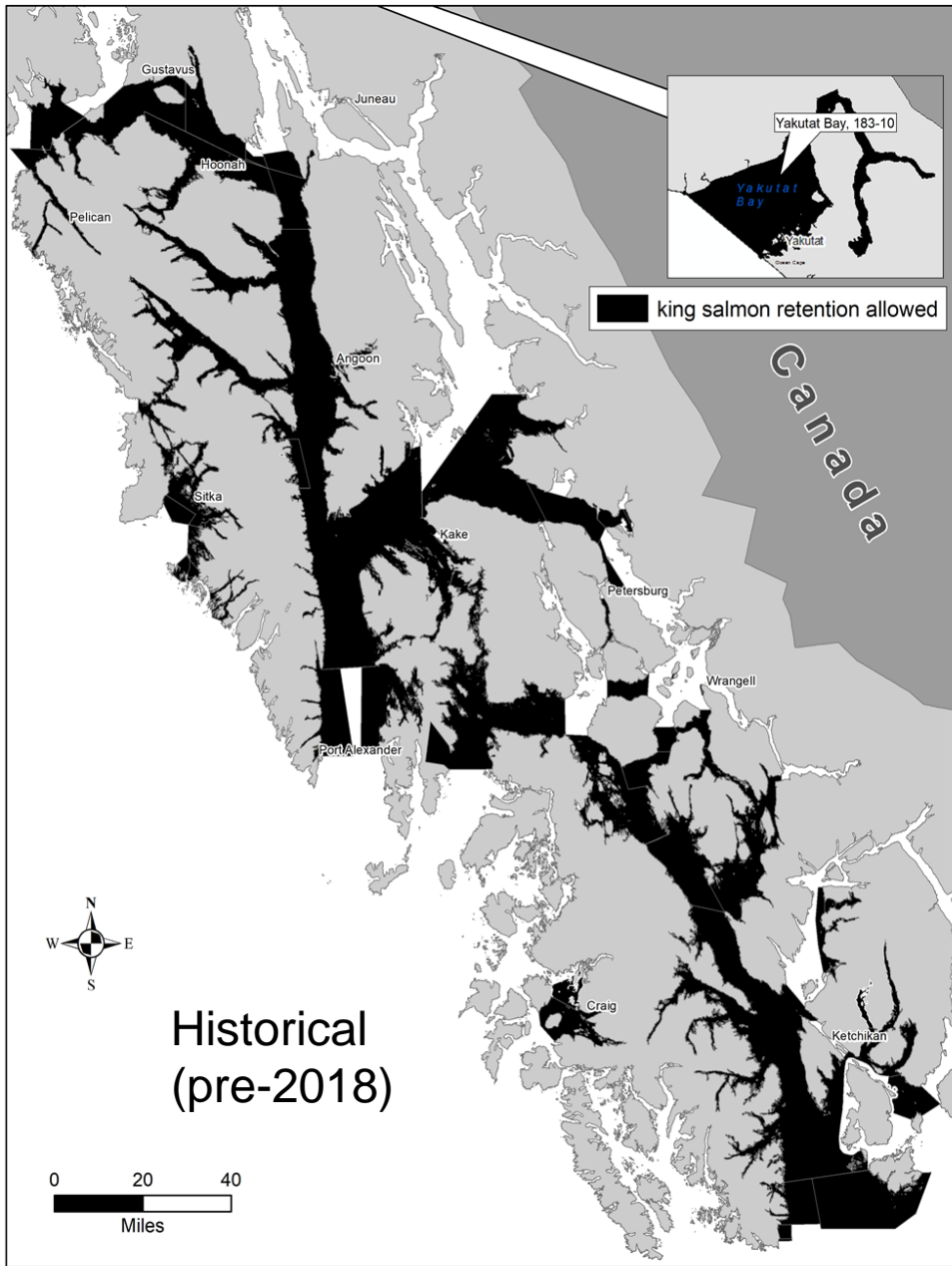


Late Winter Troll Harvest of Wild SEAK King Salmon Genetic MSA and CWT based estimates

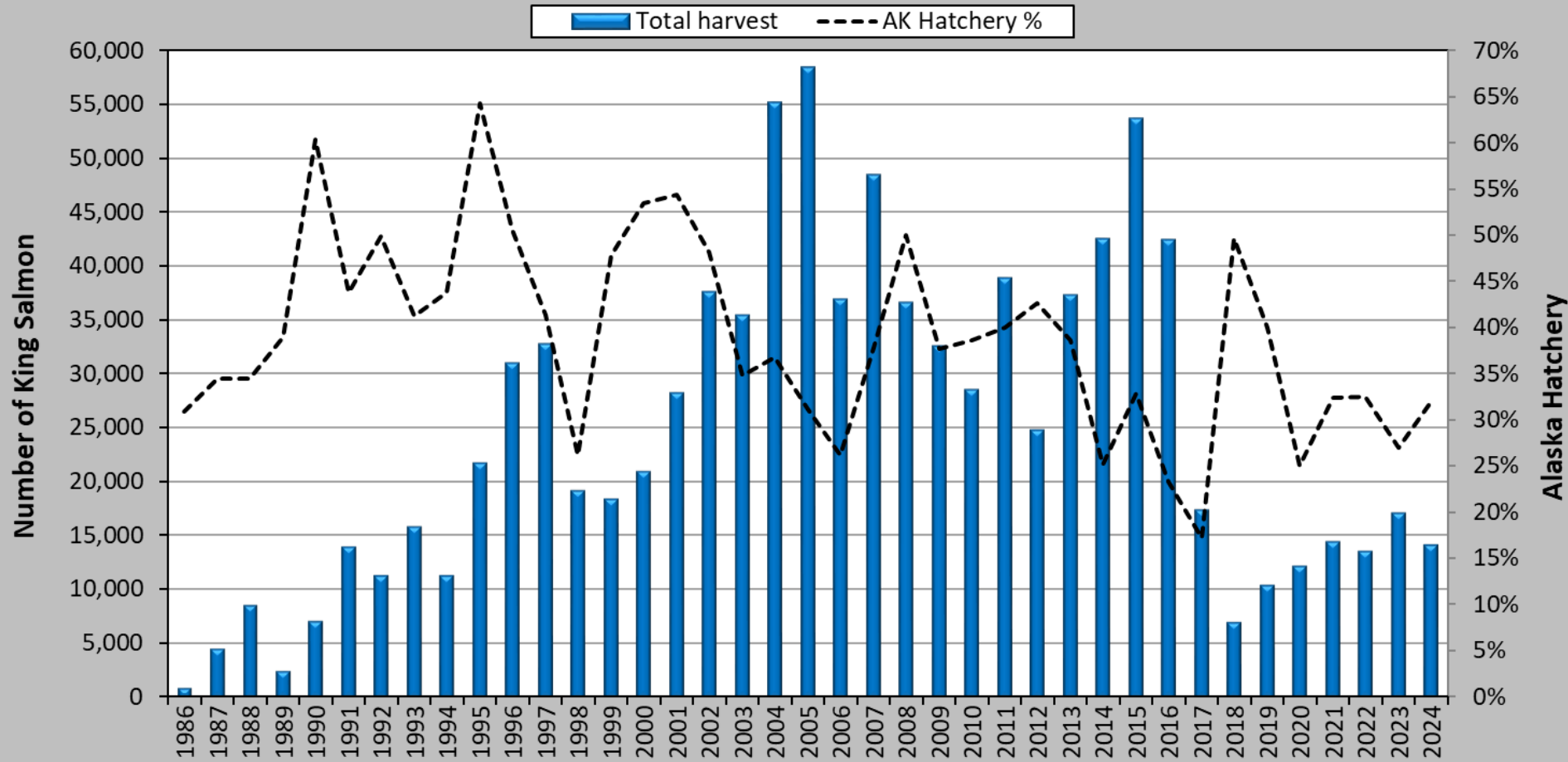


Spring Troll Fisheries

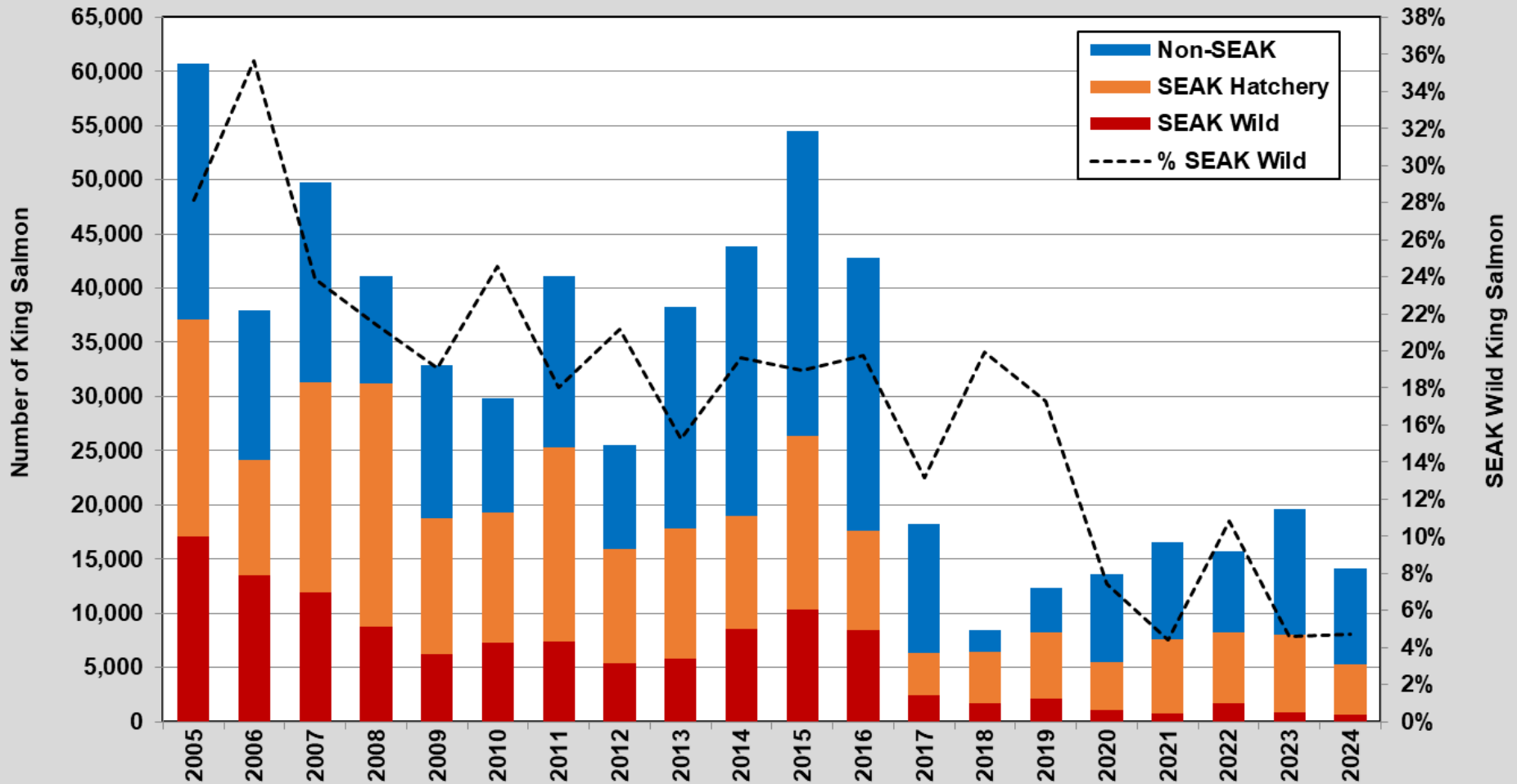
- Open May 1 – June 30
- Current fisheries located near hatcheries or release sites; target Alaska hatchery-produced king salmon.
- Harvest of treaty king salmon is limited according to the percentage of the Alaska hatchery fish taken in each fishery.
- Spring fisheries are managed individually on a weekly basis by emergency order.
- Hatchery-produced chum salmon also targeted
- Proposals:
 - **129** allow for one additional fishing day per week during Yakutat Bay spring troll
 - **132** change minimum size and measure method for king salmon in all spring troll areas
 - **133** change minimum size and measure method for king salmon in District 113 spring troll areas
 - **169** allow use of fishing rods in conjunction with downriggers by hand troll during the spring and summer troll fisheries.



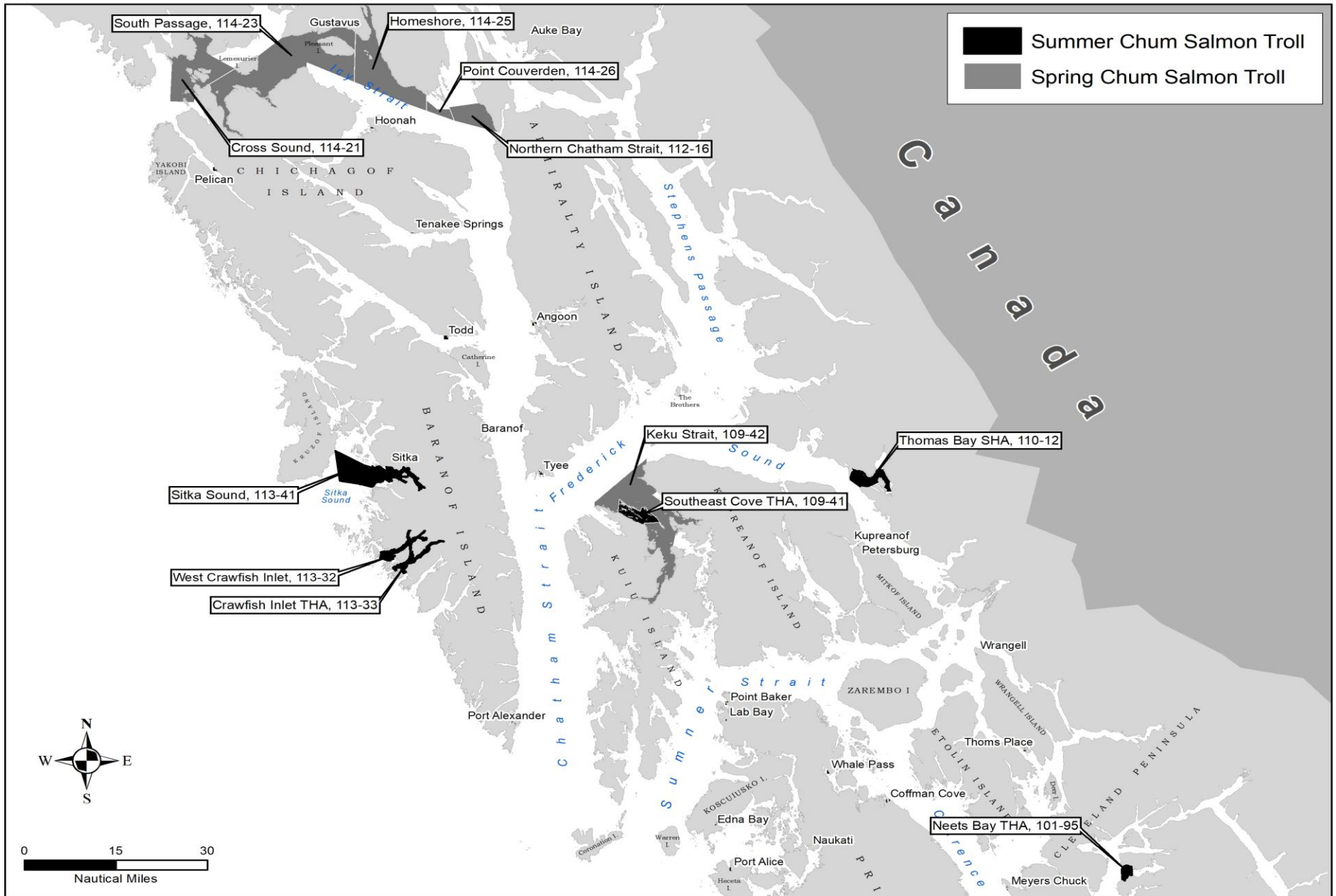
Spring Fishery King Salmon Harvests, 1986-2024



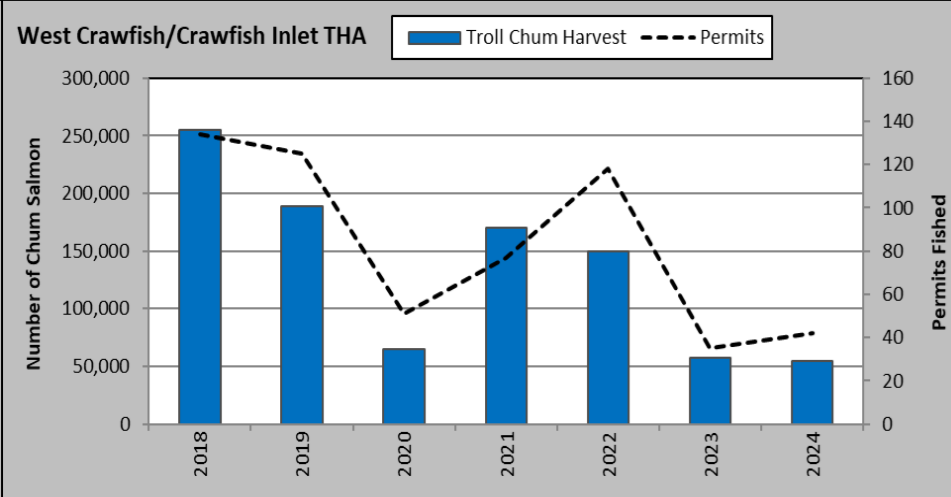
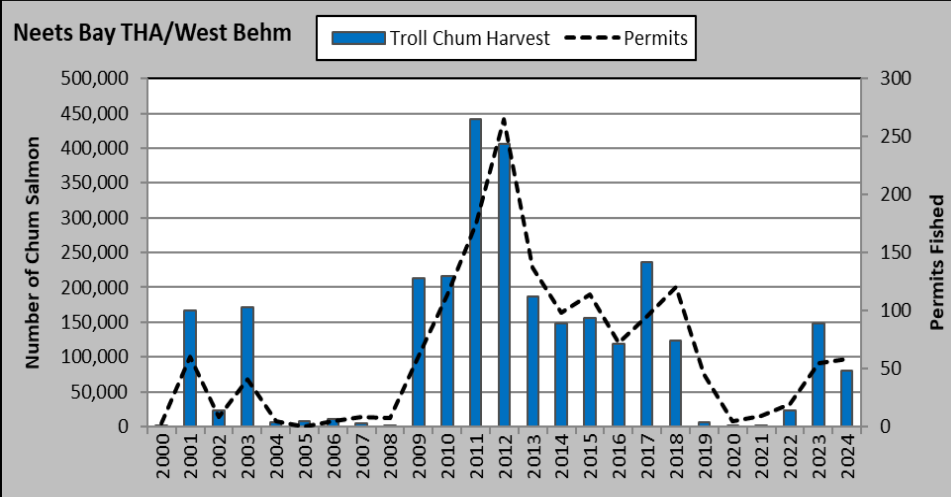
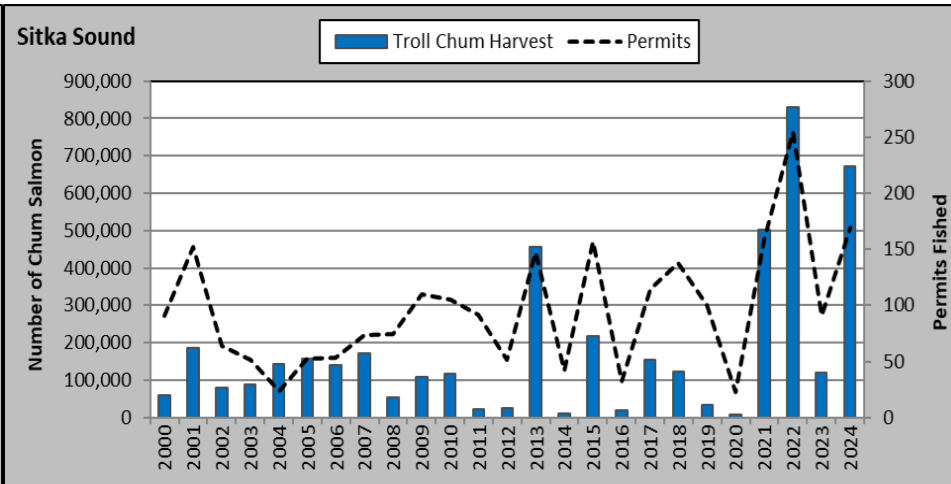
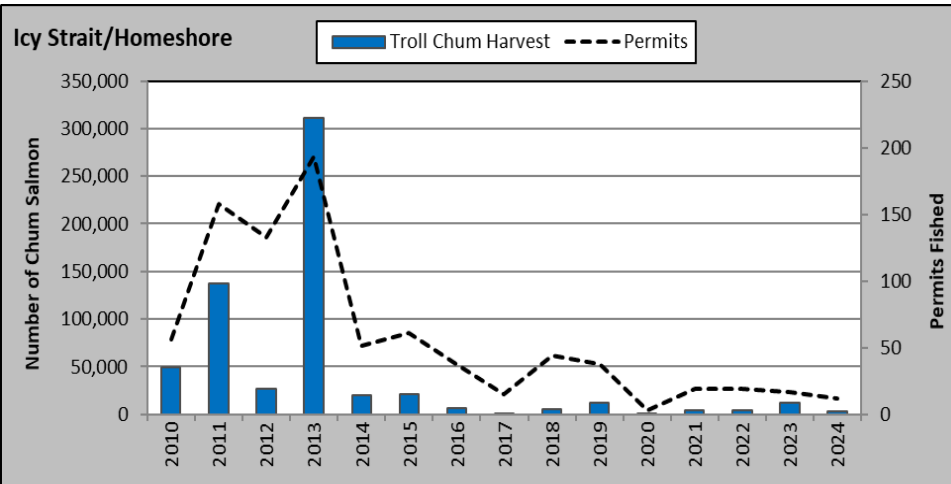
Spring Troll Harvest of Wild SEAK King Salmon Genetic MSA and CWT based estimates



Spring/Summer Hatchery Chum Salmon Troll Areas



Directed Chum Salmon Troll Fisheries, 2010–2024



Summer Troll Fishery

- Summer fishery begins on July 1, harvest and effort are at peak levels with most waters of the region open to troll gear
- 1st king opening: 70% of the king salmon remaining on the troll allocation after winter and spring fisheries end
- 2nd king opening: remaining 30% of the troll allocation
- Also target coho and chum during summer

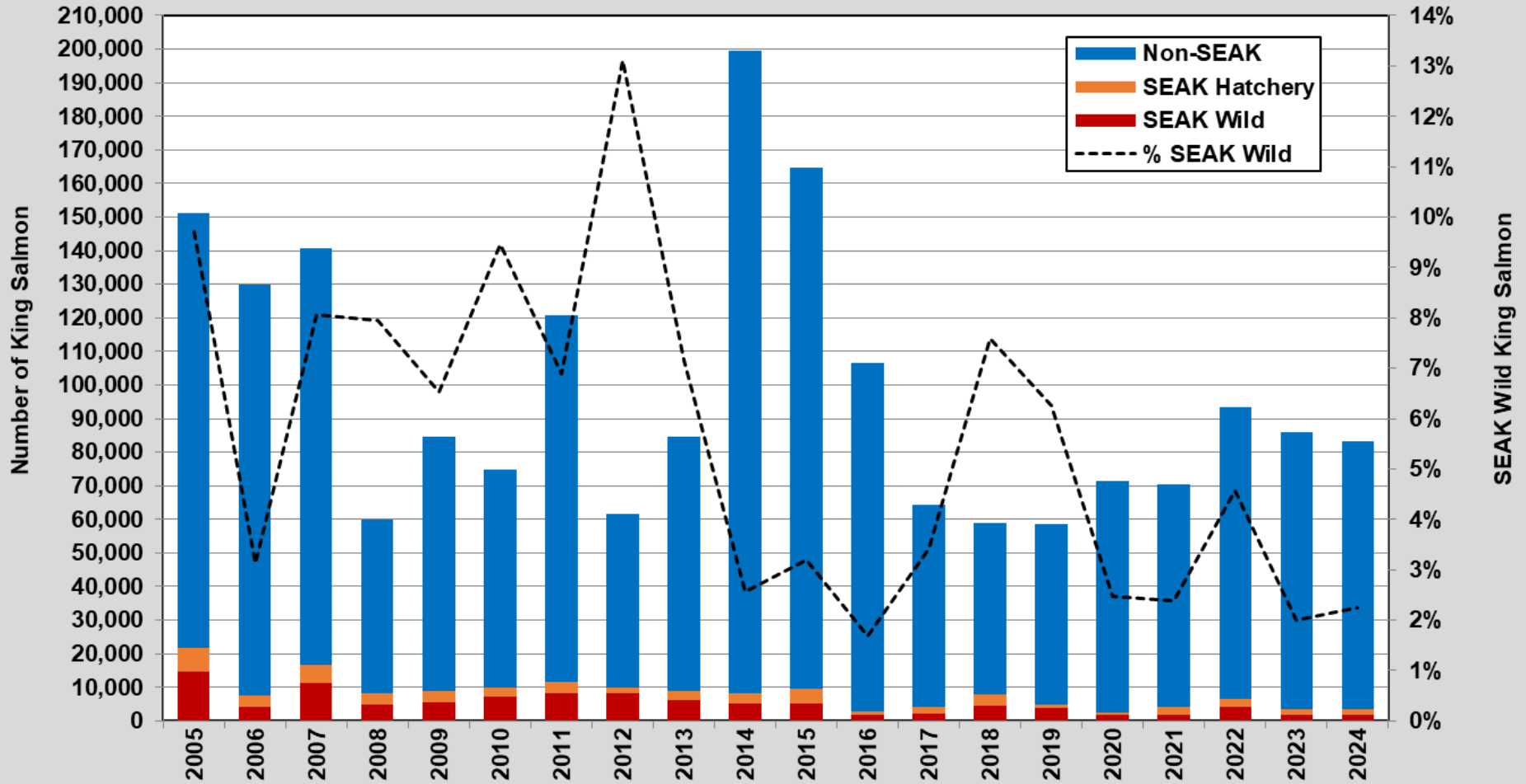
Proposals:

- 130 reallocate harvest proportions between the summer troll king salmon periods by eliminating a second retention period
- 131 allow for multiple limited harvest fisheries to occur, including replacement of the second summer king opening if criteria are met
- 169 allow use of fishing rods in conjunction with downriggers by hand troll

SEAK/Yakutat Fishery Area



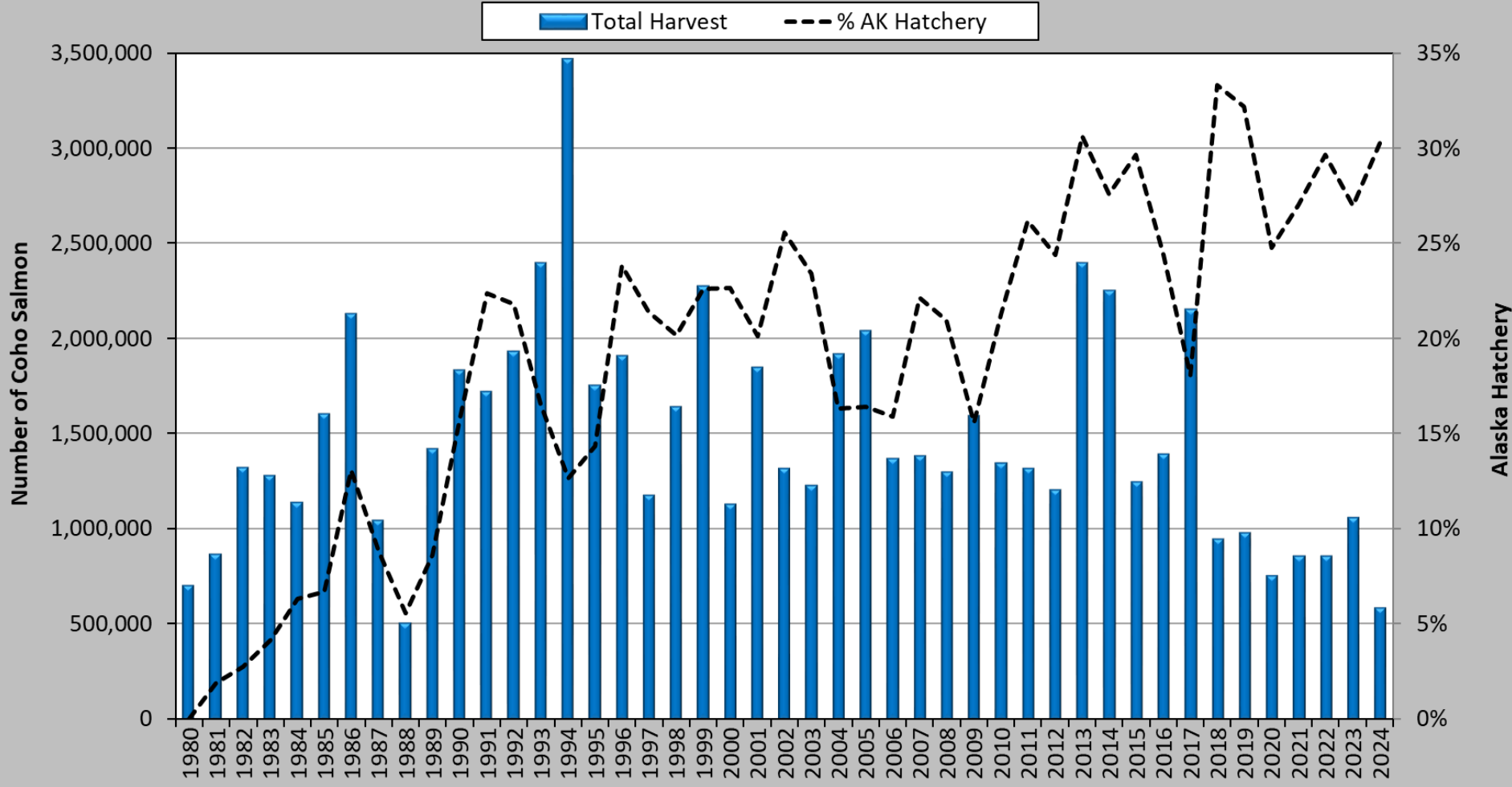
Summer Troll Harvest of Wild SEAK King Salmon Genetic MSA and CWT based estimates



Coho Salmon Troll Fishery

- Troll coho retention begins June 1 and continues until late September
- Coho present in over 2,500 systems
- Fishery managed to ensure escapement goals are met and to achieve board allocation guidelines between gear groups over time
- Area near U.S./Canada border is managed in cooperation with Canada under terms of the Pacific Salmon Treaty
- Run strength assessed in season, conservation closures based on projected wild abundance

Troll Coho Salmon Harvest, 1980–2024



Questions?

