



# SUBSISTENCE OVERVIEW

PRESENTATION TO THE ALASKA BOARD OF FISHERIES  
KETCHIKAN, ALASKA - JANUARY 27, 2025



Lauren Sill and Emily Doll  
RC 3 Tab 22



# ETHNOGRAPHIC BACKGROUND: SALMON

- Salmon is a primary food source for Southeast residents for thousands of years and in current day
- Traditional food source for Tlingit, Haida, and Tsimshian peoples
- Most households throughout the region fish with at least one other household
- Salmon for home use are harvested with a variety of methods
- Salmon are frozen, smoked, dried, and jarred for year-round use
- All species of salmon are used by Southeast residents



Southeast resident jars salmon



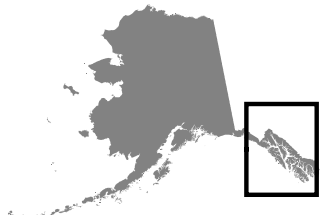
## Yakutat C&T






Gulf of Alaska

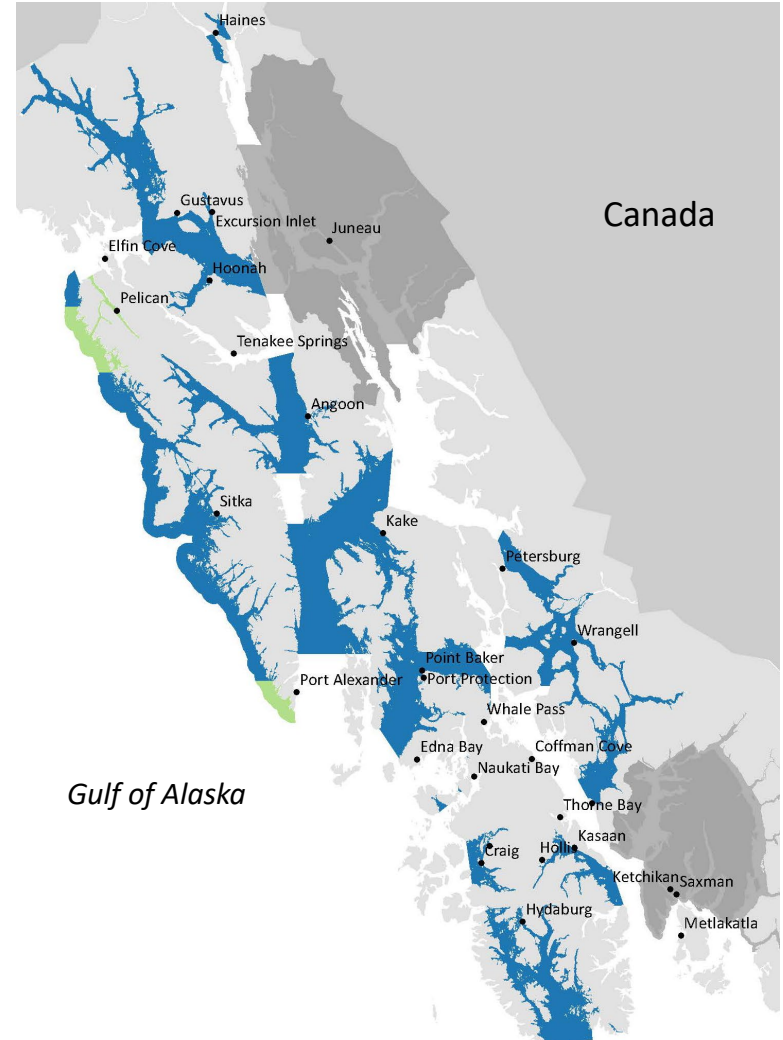
Canada

Yakutat



-  Positive C&T for salmon
-  Positive C&T for salmon, except sockeye salmon
-  Nonsubsistence Areas

## Southeast Alaska C&T



Canada

Gulf of Alaska



# AMOUNTS REASONABLY NECESSARY FOR SUBSISTENCE <sup>4</sup>

## Districts 1 - 4:

9,068 - 17,503 salmon

## Districts 5 - 8, 10, and Section 9-B:

4,120 - 7,345 salmon

## Section 9-A and District 13:

10,487 - 20,225 salmon

## District 12:

1,100 - 1,700 salmon

## District 14:

600 - 1,500 salmon

## District 15:

7,174 - 10,414 salmon

## Yakutat Area:

5,800 – 7,832 salmon



Haines resident prepares a net

## Gear

- Drift gillnets, set gillnets, gaffs, spears, beach seines, dip nets, cast nets, hand purse seines
- Varies by management area

## Seasons

- Managed by system and species
- Time and area authority

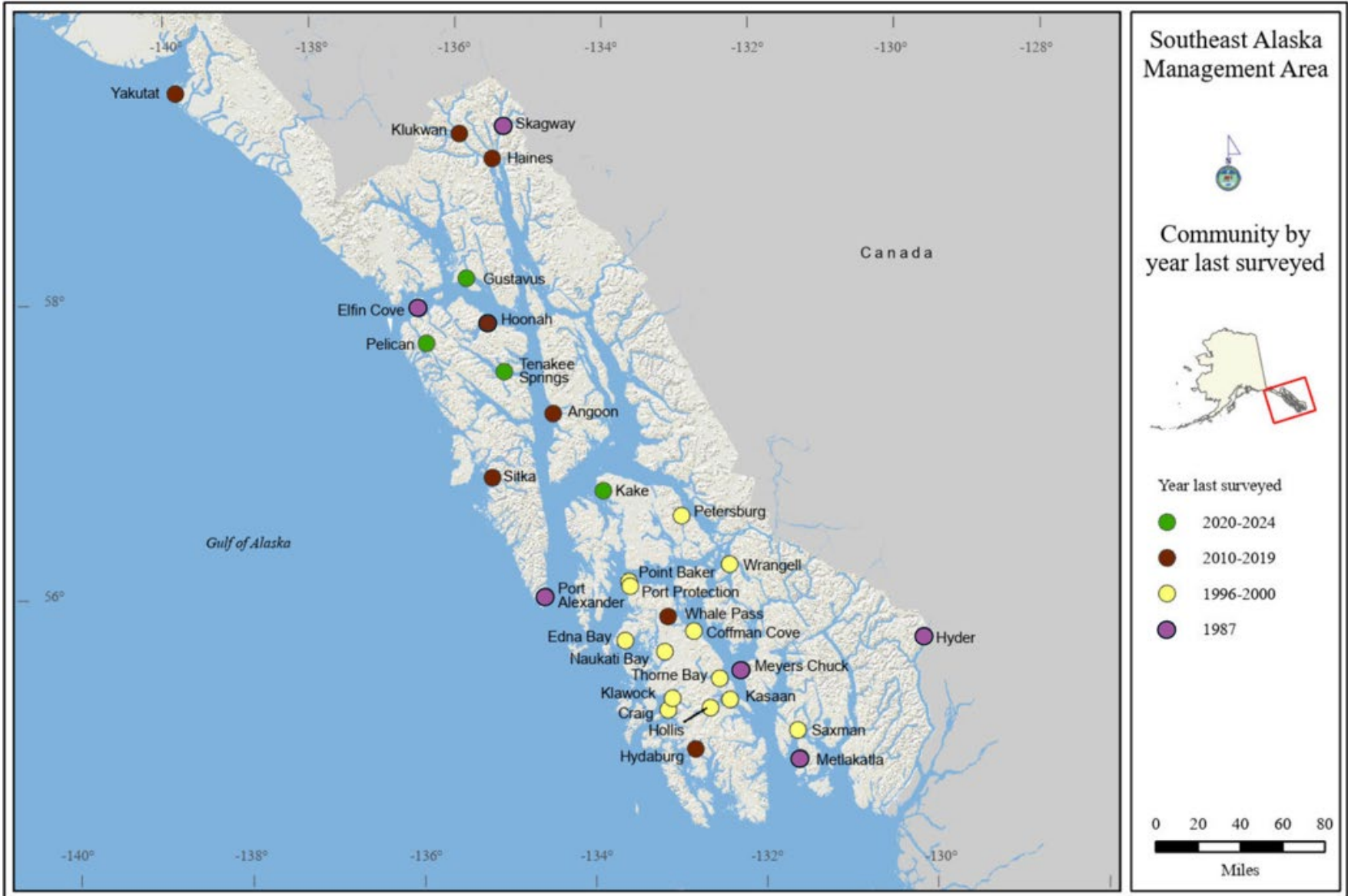
## Limits

- Specified in regulation
- Possession and annual
- Varies by system

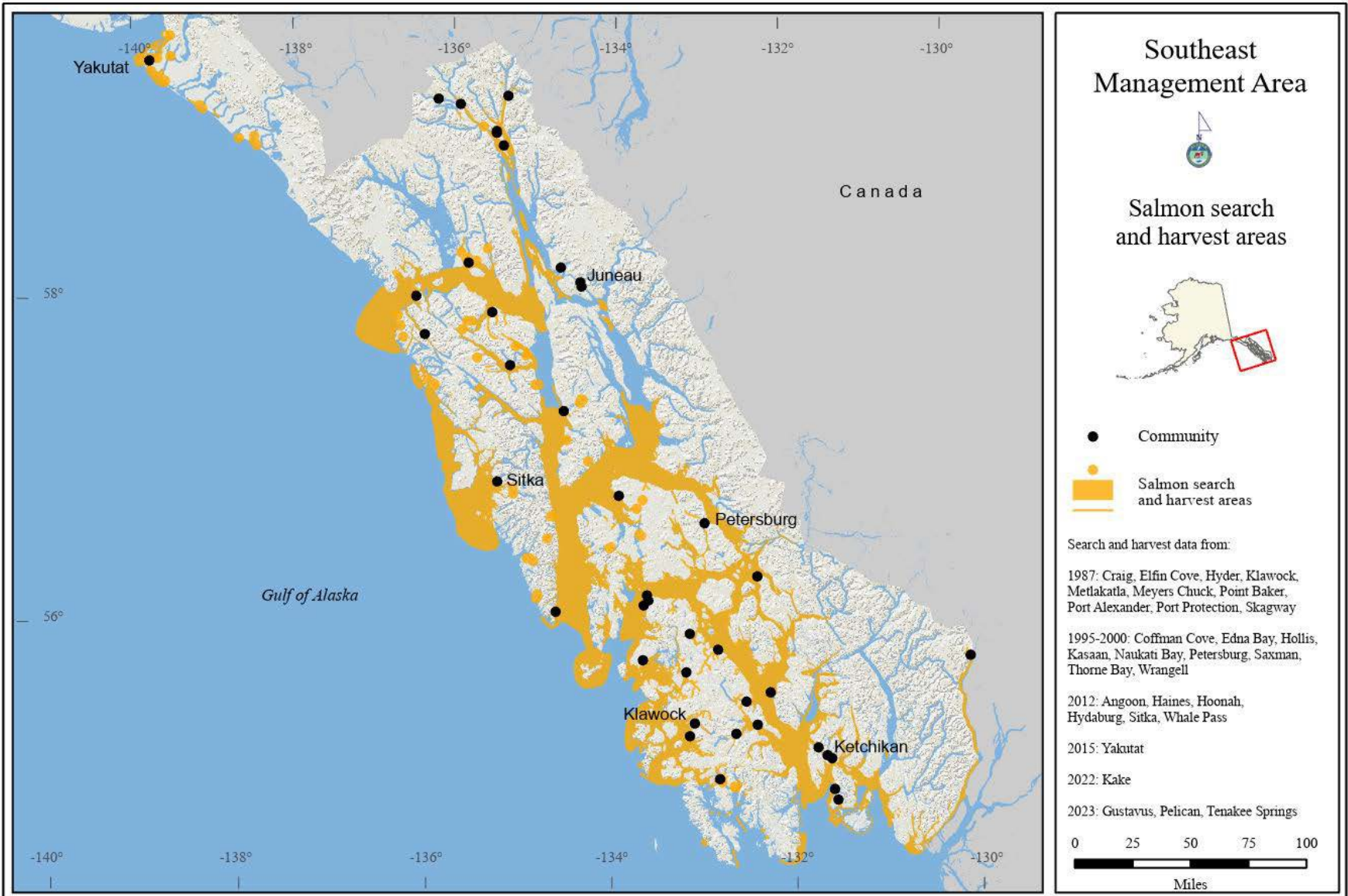


Haines residents set a net

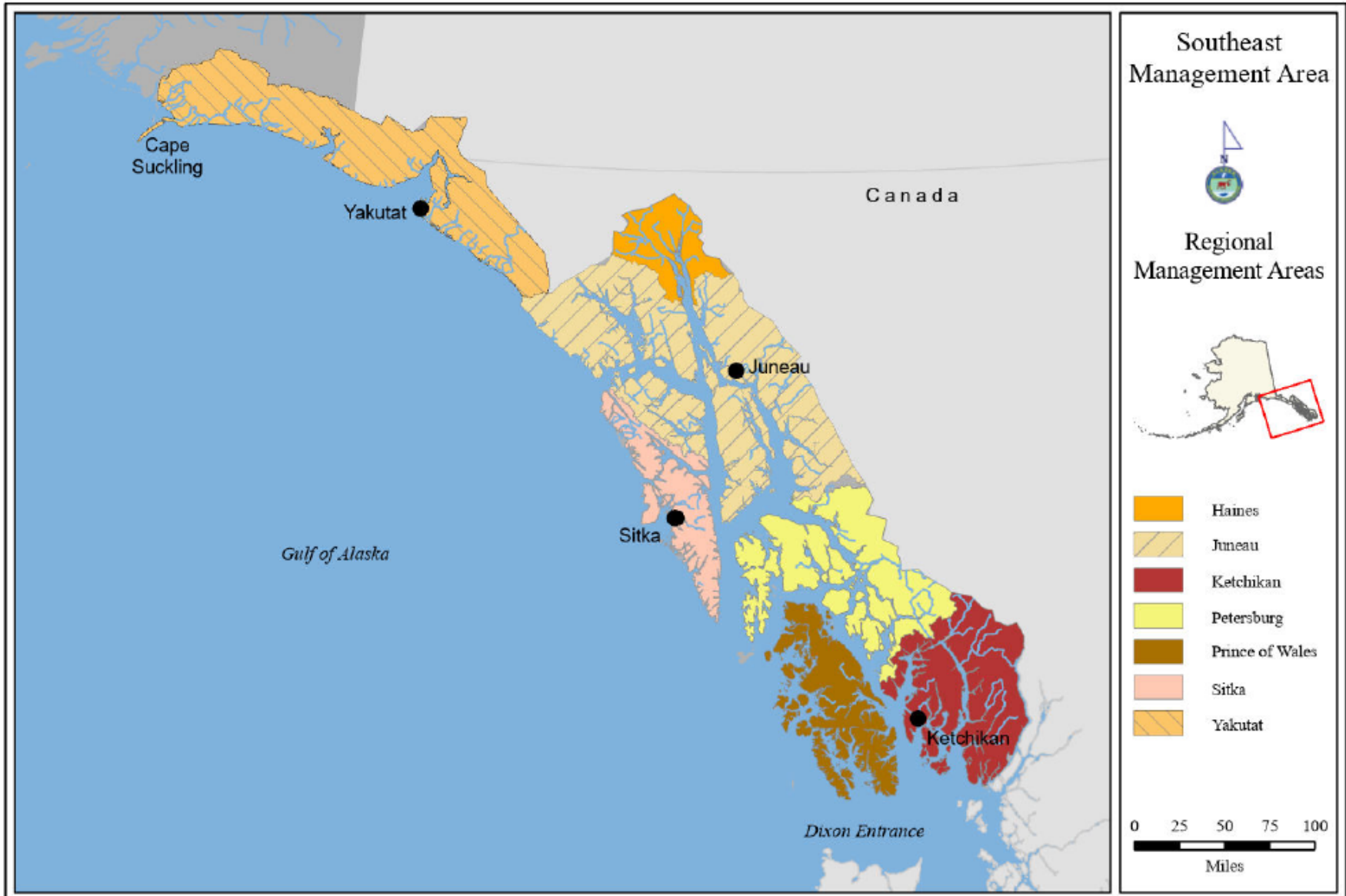
# COMPREHENSIVE SUBSISTENCE DATA BY YEAR



# SALMON SEARCH AND HARVEST AREAS



# SOUTHEAST MANAGEMENT AREAS





## **Yakutat**

Includes the community of Yakutat

## **Haines**

Includes the communities of Haines, Klukwan, and Skagway

## **Juneau**

Includes the communities of Juneau, Angoon, Hoonah, Tenakee Springs, Gustavus, Pelican, and Elfin Cove

## **Sitka**

Includes the communities of Sitka and Port Alexander

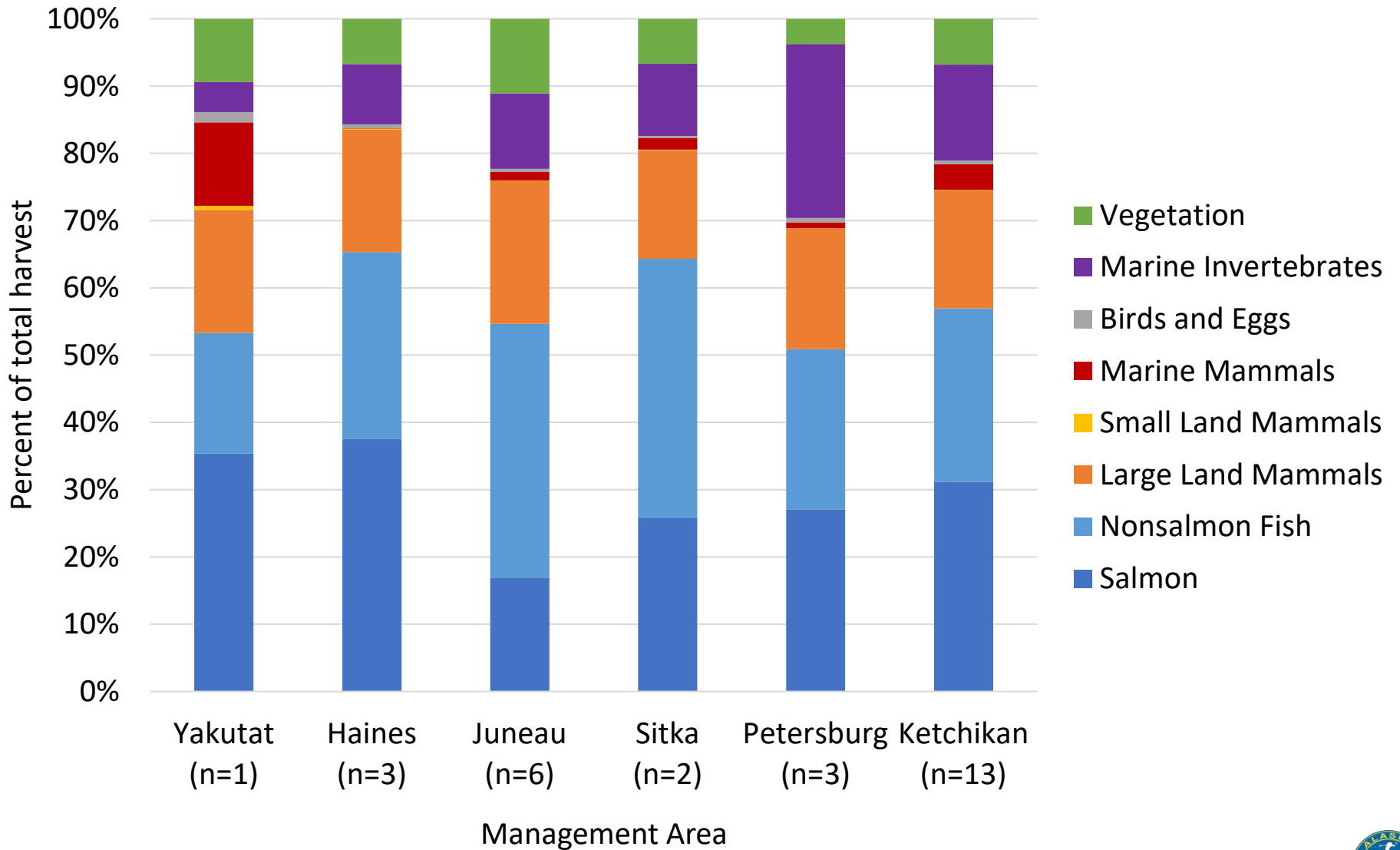
## **Petersburg/Wrangell**

Includes the communities of Petersburg, Wrangell, and Kake

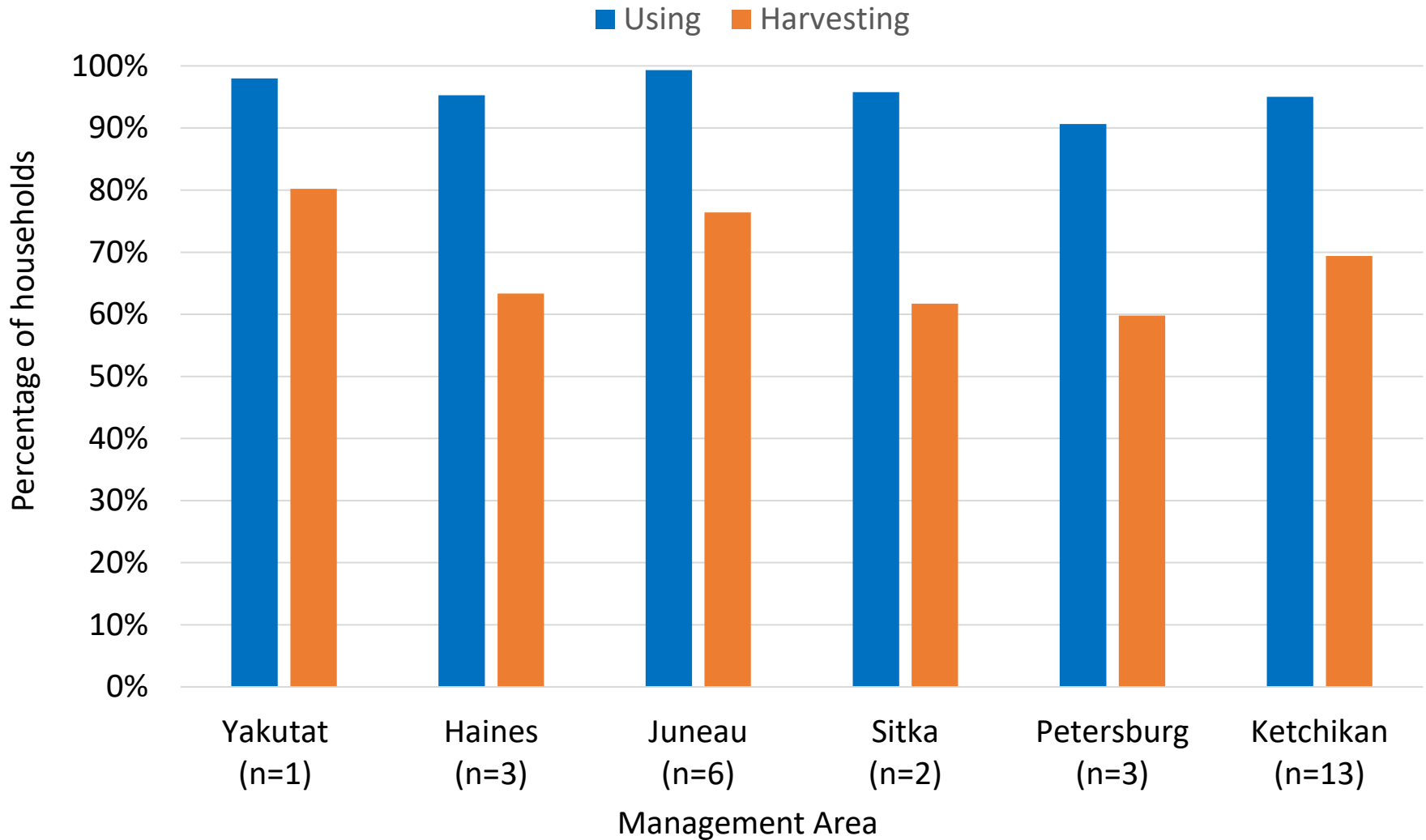
## **Ketchikan**

Includes all POW communities, Ketchikan, and Metlakatla

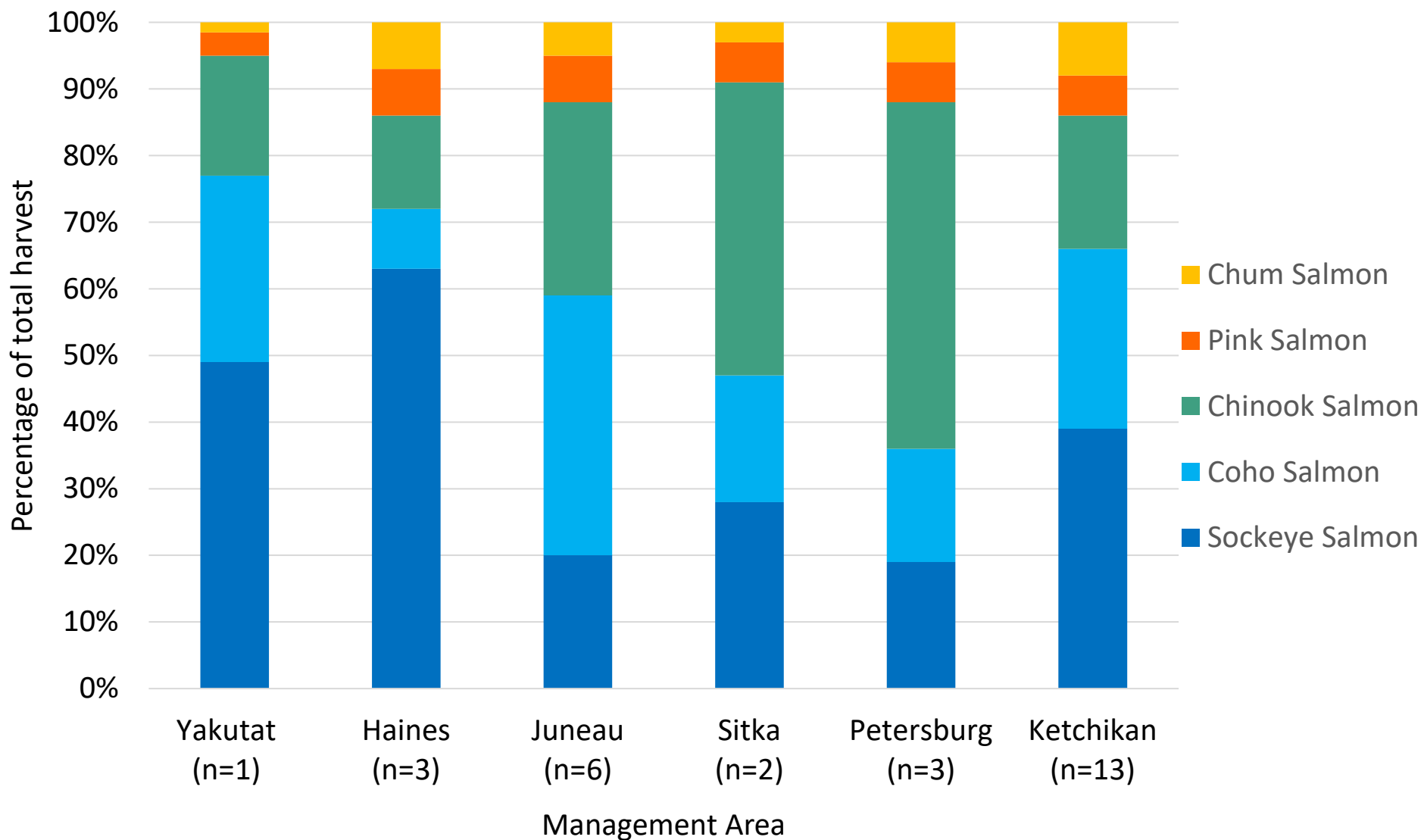
# HARVEST COMPOSITION



# HARVEST AND USE OF SALMON

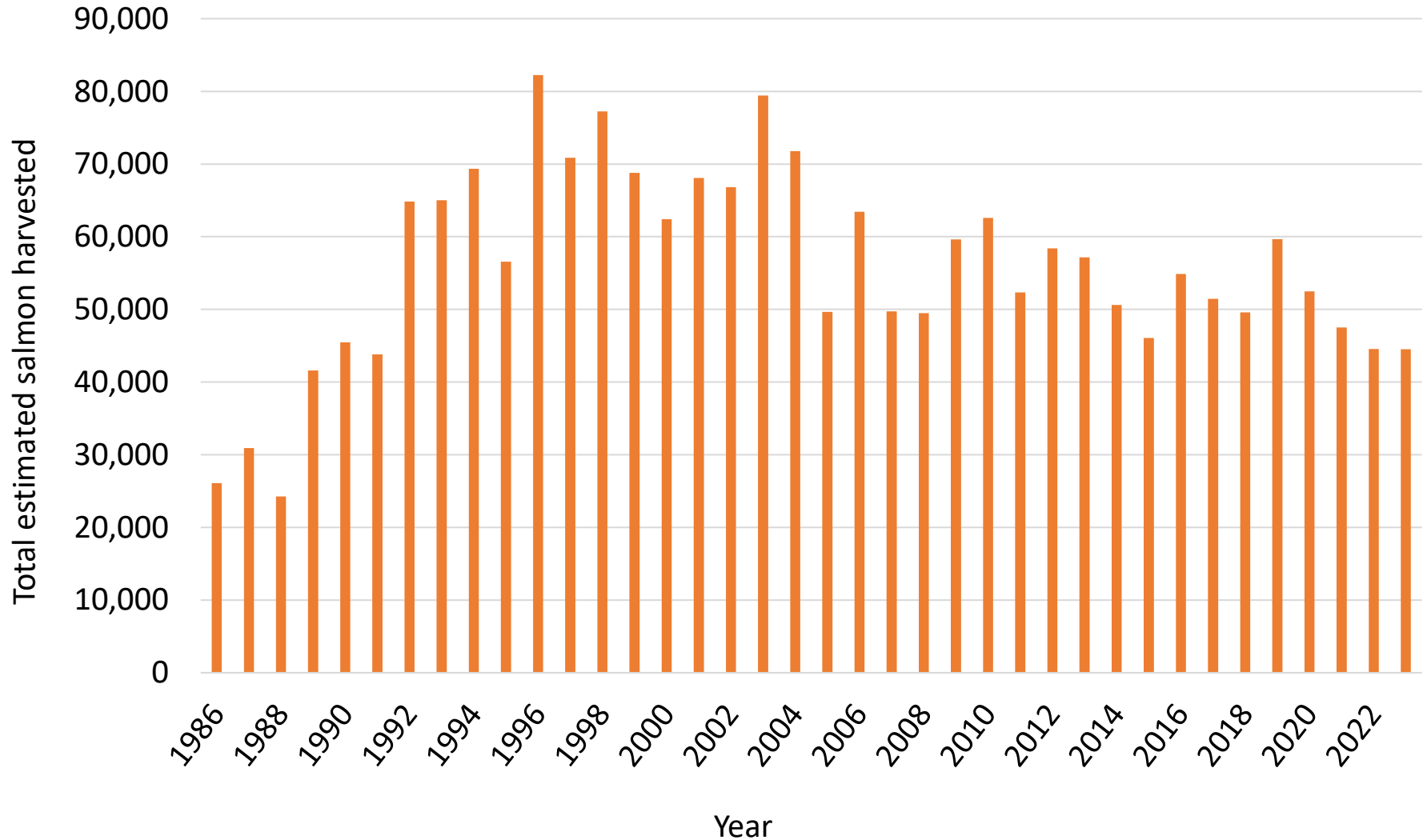


# SALMON HARVEST COMPOSITION

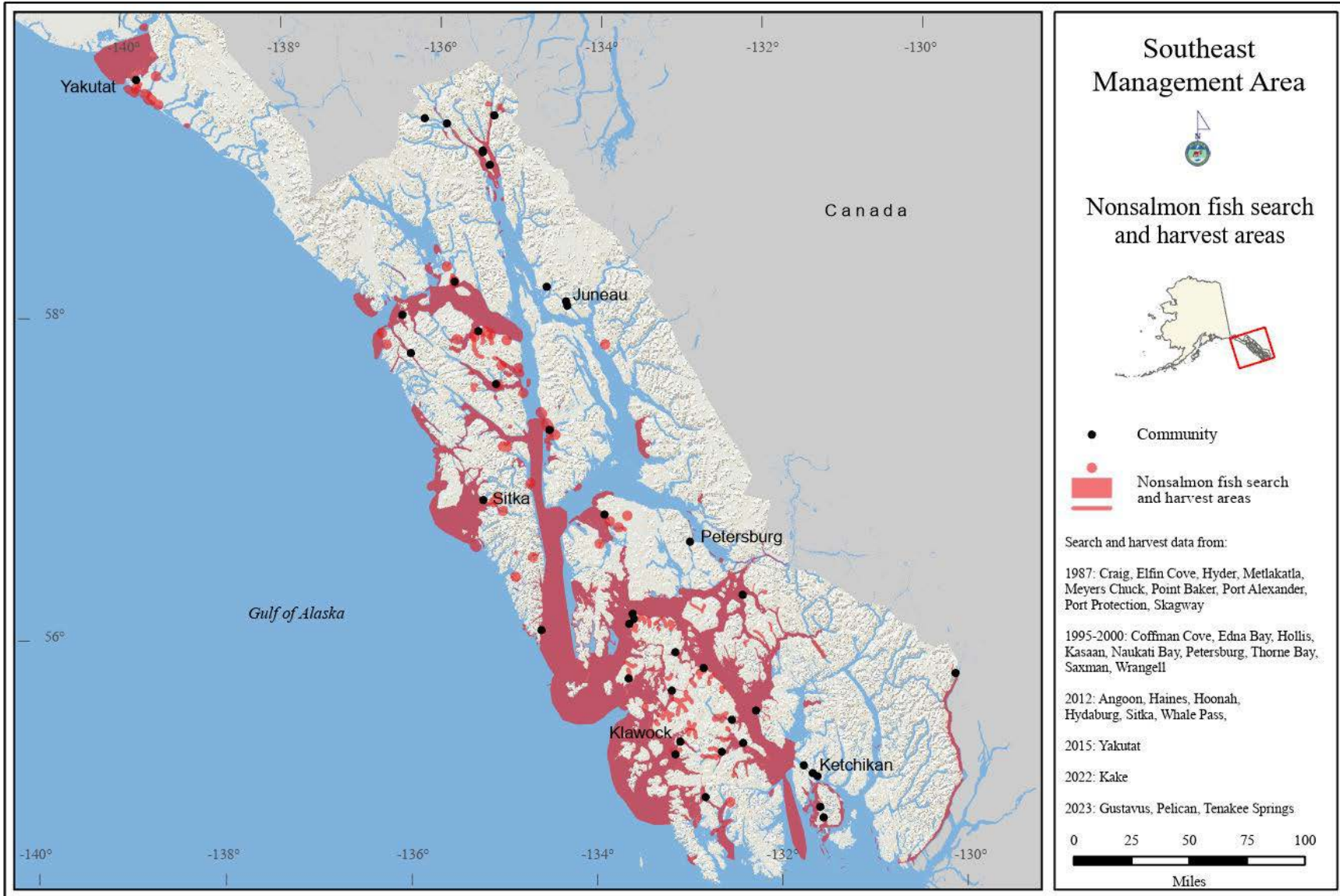




# SALMON HARVEST PERMIT DATA



# NONSALMON SEARCH AND HARVEST AREAS



## Halibut

- Primary nonsalmon fish harvested by weight by Southeast residents

## Eulachon (Hooligan)

## Smelt

## Bottomfish

## Dolly Varden

## Steelhead Trout

## Herring

- Traditional subsistence food
- Only species with ANS



Klukwan resident processes hooligan oil





- Northwest Coast activity
- Cultural and nutritional importance
- Sitka long-standing place of prominence in the harvest
- Specialized harvest
- Sharing is paramount
- Distribution and exchange networks move eggs throughout the state and beyond
- Preservation: Historically air dried or packed in salt. Today freezers most common. Eaten fresh.



Herring eggs on hemlock branches



Drying herring eggs on branches  
Photo courtesy Gathet Museum and Archives



# HERRING SPAWN



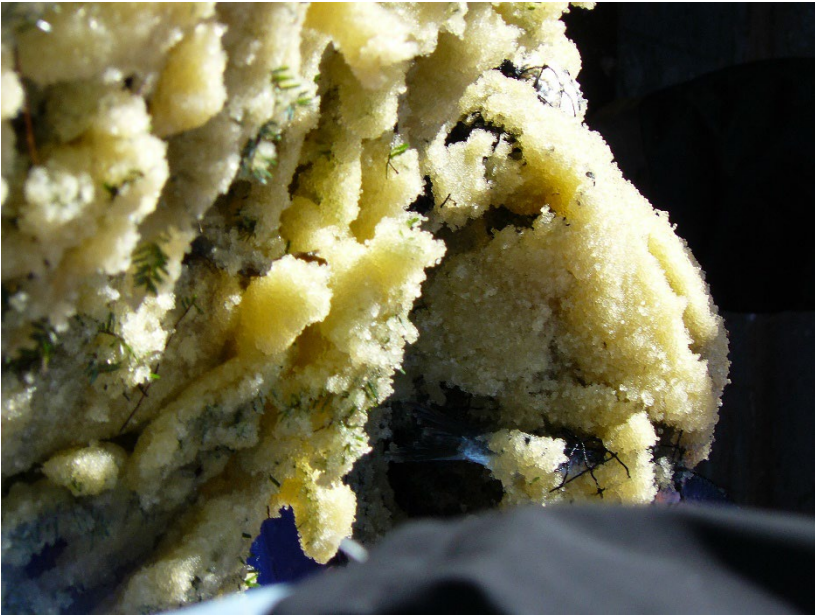
# HERRING EGG HARVESTS



# PROCESSING HERRING EGGS



# HERRING EGGS



## HERRING EGG SUBSISTENCE HARVEST SURVEY SITKA, ALASKA

2024

This survey is used to estimate subsistence harvests of herring eggs from Sitka Sound and to describe community subsistence economies. We will publish a summary report which will be available to all households in your community. We share this information with the Sitka Tribe of Alaska, the Alaska Department of Fish and Game, the U.S. Fish and Wildlife Service and the National Park Service. We work with the Federal Regional Advisory Councils and with local Fish and Game Advisory Committees to better manage subsistence, and to implement federal and state subsistence priorities.

This project is guided by the research principles adopted by the Alaska Federation of Natives in 1993. We will NOT identify your household. We will NOT use this information for enforcement. Participation in this survey is voluntary. Even if you agree to be surveyed, you may stop at any time.

HOUSEHOLD ID:		
COMMUNITY ID:	Sitka	313
INTERVIEWER:		
INTERVIEW DATE:		
DATA CODED BY:		
DATA ENTERED BY:		
SUPERVISOR:		



**COOPERATING ORGANIZATIONS**

RESOURCE PROTECTION DEPARTMENT SITKA TRIBE OF ALASKA 429 KATLIAN STREET SITKA, AK 99835 907-747-7168	DIVISION OF SUBSISTENCE ALASKA DEPT OF FISH & GAME 802 3RD STREET JUNEAU, AK 99801 907-465-9617
--	---



Technical Paper No. 508

## The Subsistence Harvest of Pacific Herring Spawn in Sitka Sound, Alaska, 2024

by  
**Lauren A. Sill**  
and  
**Terri Barnett**

January 2025

Alaska Department of Fish and Game

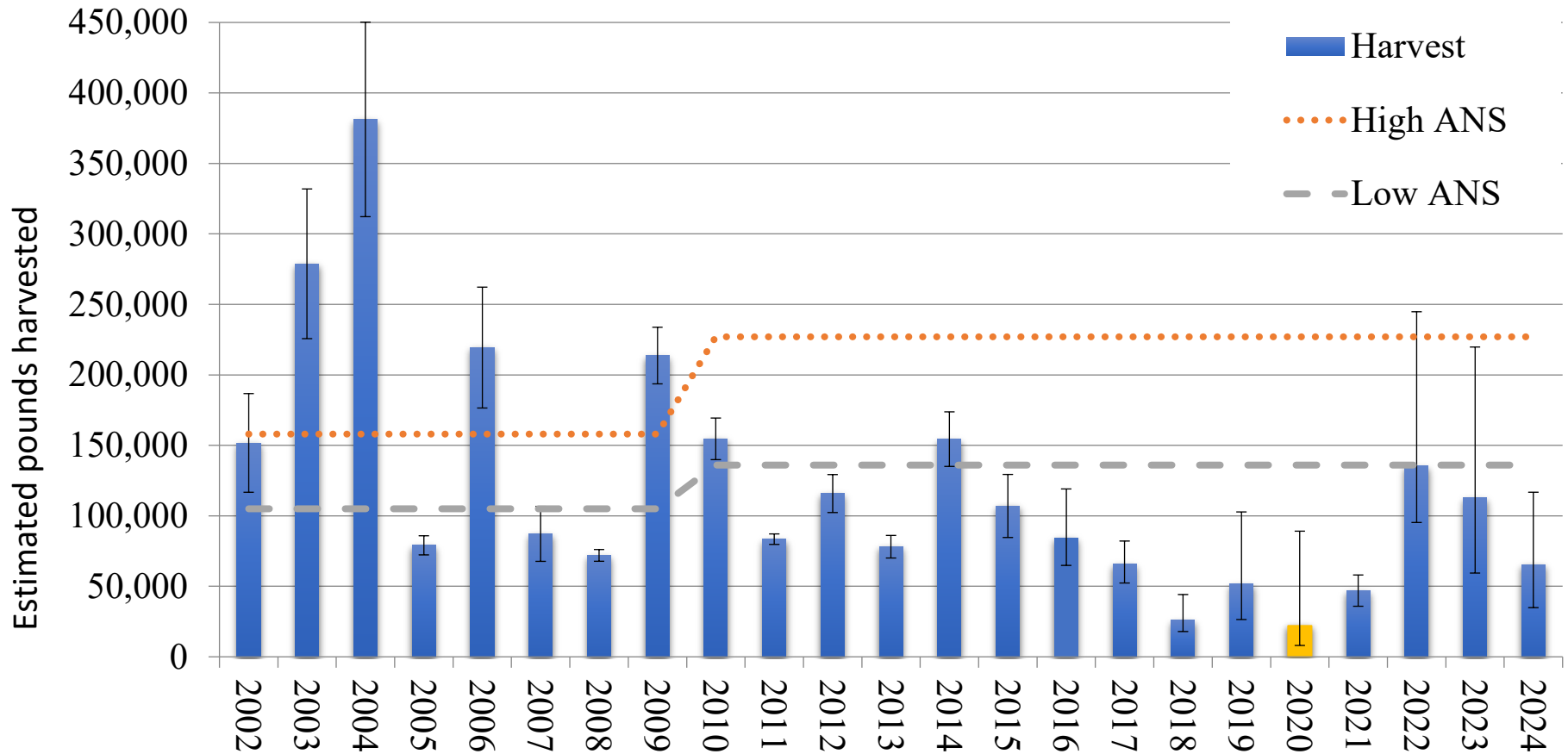
Division of Subsistence



- To conduct in-person interviews with households who harvest herring spawn;
- To produce estimates of the total pounds of herring spawn harvested on hemlock branches, *Macrocystis* kelp, hair seaweed and “other” substrates; and,
- To identify locations where herring spawn are harvested.



# ESTIMATED HERRING EGG HARVEST



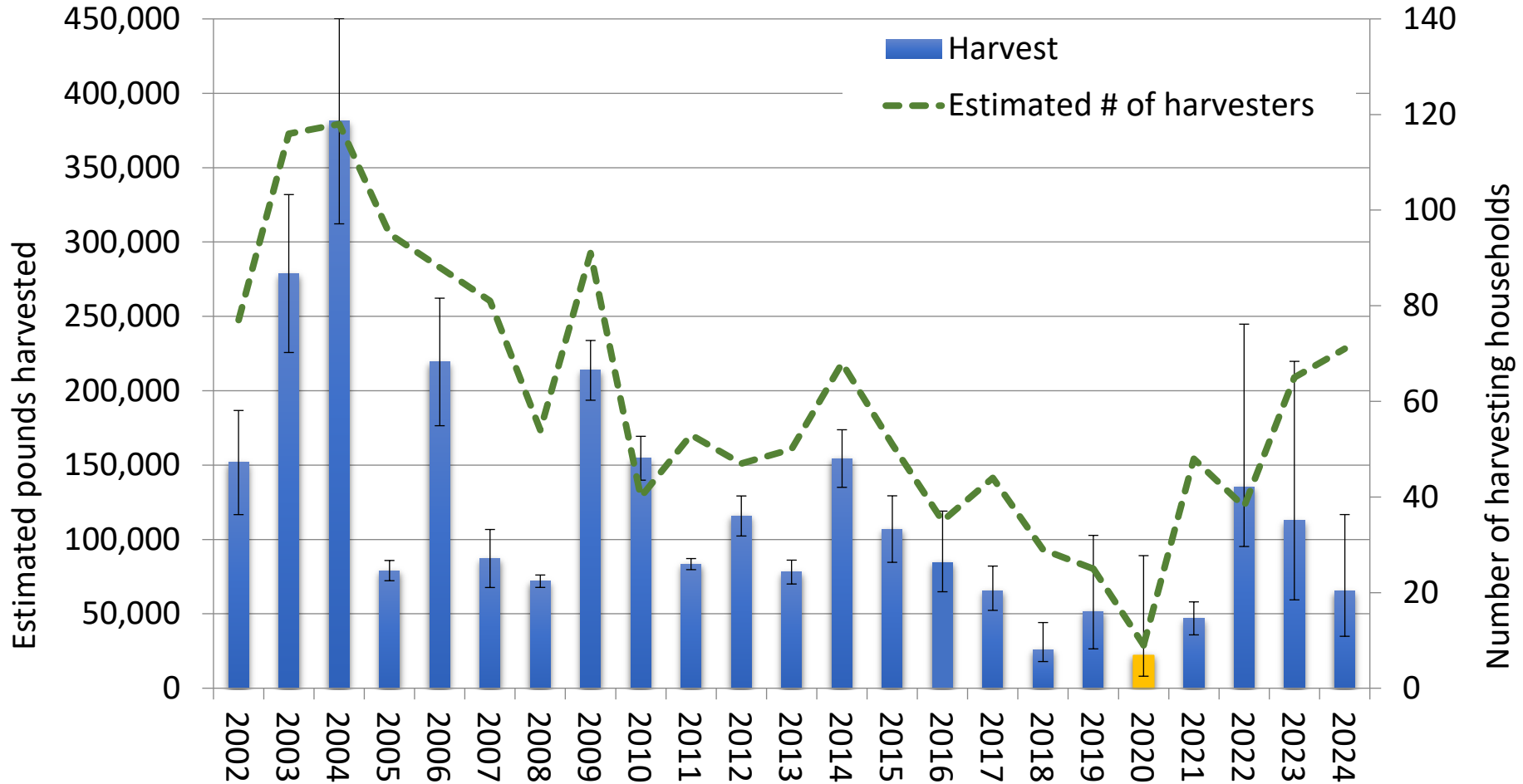
*Note* The bar depicting the 2020 harvest is yellow because the 2020 harvest year was affected by the COVID-19 pandemic.

Total pounds useable weight of herring eggs and amount necessary for subsistence (ANS) of herring spawn on all substrates in Sitka Sound, 2002–2024.





# HERRING EGG HARVEST EFFORT



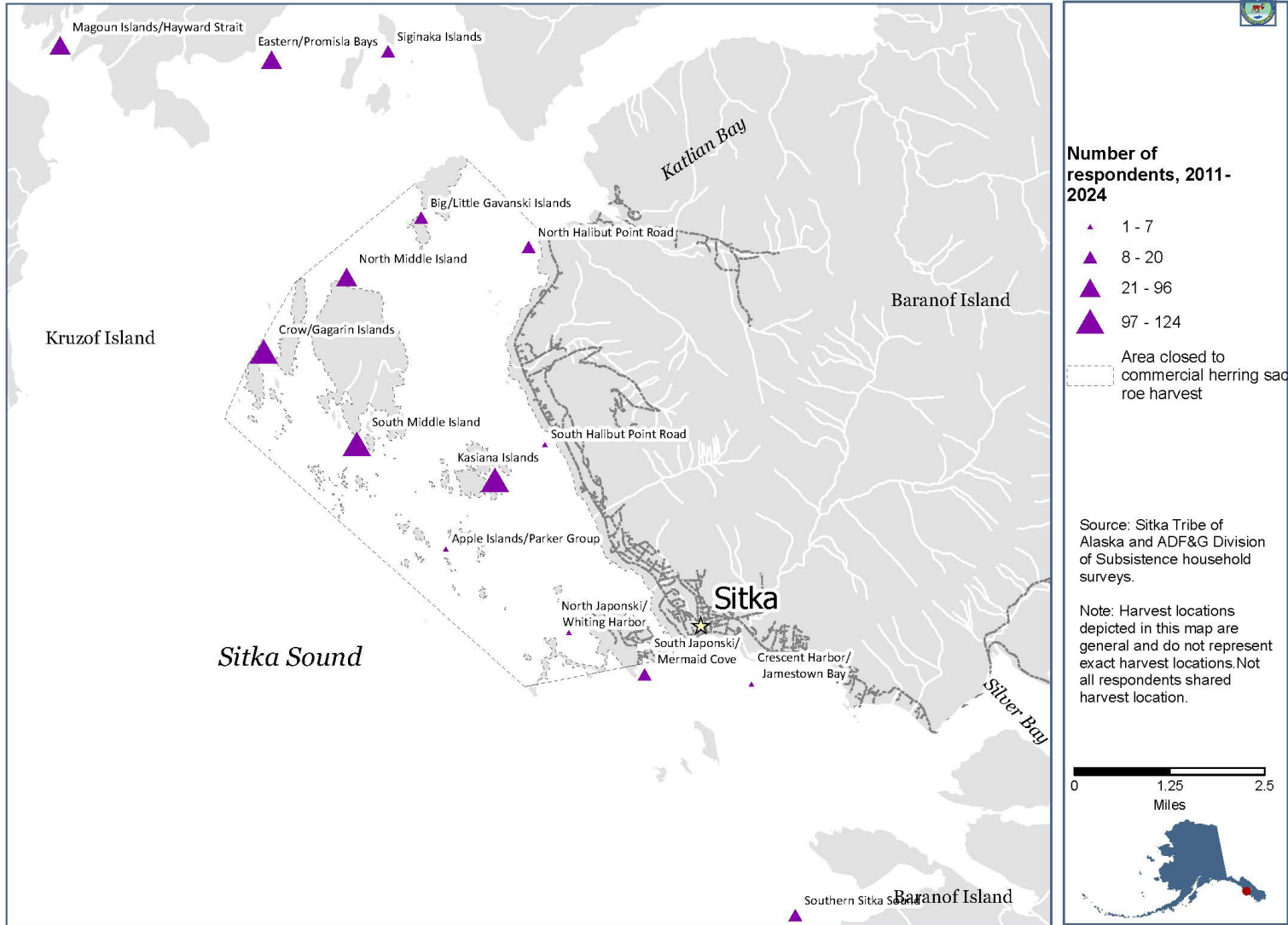
*Note* The bar depicting the 2020 harvest is yellow because the 2020 harvest year was affected by the COVID-19 pandemic.

Total pounds of herring eggs, useable weight and number of subsistence harvesters in Sitka Sound, 2002–2024.



# HARVEST LOCATIONS, 2011–2024

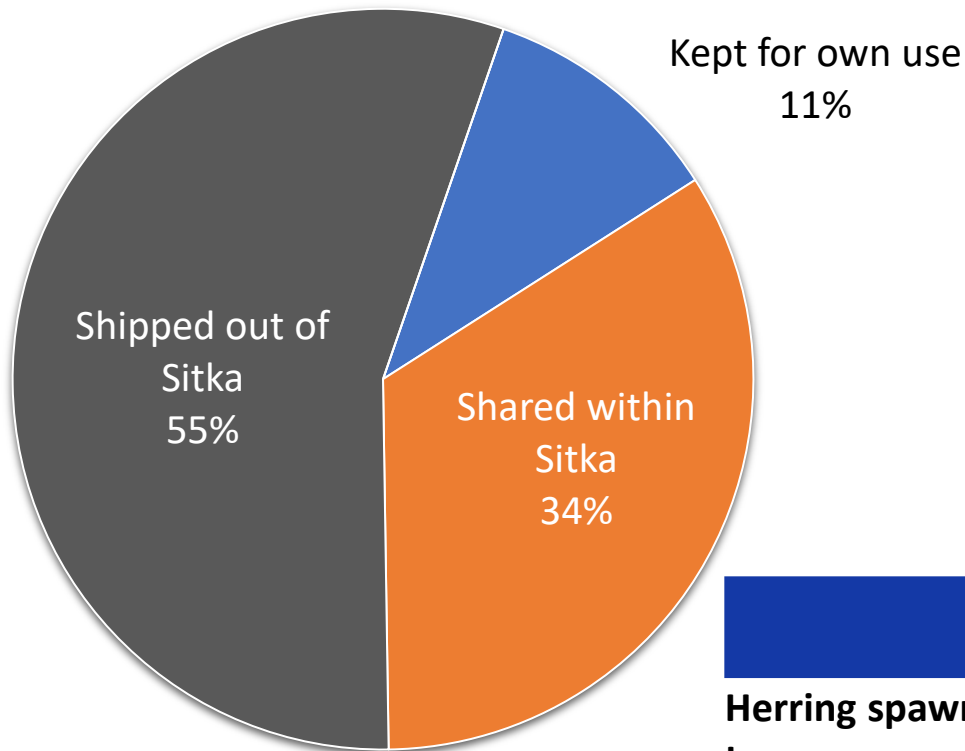
## DIVISION OF SUBSISTENCE - ALASKA DEPARTMENT OF FISH AND GAME



# SHARING HERRING EGGS, 2010–2024

Region	Frequency of sharing
Southeast	152
Arctic	24
Yukon-Kuskokwim Delta	24
Mat-Su	17
Outside Alaska	16
Kenai Peninsula	11
Interior	9
Bristol Bay	4
Aleutians	3
Prince William Sound	2

# DISTRIBUTION OF HERRING EGG HARVEST



	Kept for own use	Shared within Sitka	Shipped out of Sitka
<b>Herring spawn - all types</b>	<b>11%</b>	<b>34%</b>	<b>55%</b>
Herring spawn on hemlock branches	8%	39%	53%
Herring spawn on kelp	25%	7%	69%
Herring spawn, hair seaweed	33%	48%	19%



## What size vessel did households use to harvest herring spawn in 2024?

Number of households responding	less than 20 feet	20 to 24 feet	Over 24 feet	Commercial vessel	Other
38	45%	24%	26%	5%	8%

## Do you harvest with other households?

Number of households responding	Respondents harvested with other households	
	Yes	No
38	65.8%	34.2%



**Q: Did you get enough herring eggs for your own household in 2023?  
Did you get enough to meet your needs for sharing? (n=31)**

	Yes	No
For own household:	84%	16%
To share:	71%	29%

**Q: In 2023, were you asked for eggs that you could not supply? (n=31)**

Yes	No
26%	74%



## Current Projects

- Icy Strait Comprehensives
- Klawock Inseason Sockeye Monitoring
- Sitka Herring Surveys

## Partnerships

- Klawock Cooperative Association
- Sitka Tribe of Alaska
- Sealaska
- Various local governments and tribal organizations

## Project Proposals

- Central POW
- Yakutat Salmon Ethnography
- Salmon Permit Analysis and Harvest Location Distribution



## **Lauren Sill**

Southern Region Program Manager

[lauren.sill@alaska.gov](mailto:lauren.sill@alaska.gov)

(907) 465-3617

## **Emily Doll**

Southeast Subsistence Resource Specialist 2

[emily.doll@alaska.gov](mailto:emily.doll@alaska.gov)

(907) 267-2368

**Community Subsistence Harvest Information System**

<http://www.adfg.alaska.gov/sb/CSIS/>

**Division Technical Paper Series**

<http://www.adfg.alaska.gov/sf/publications>

**Thank you to all the Southeast residents who participated in this research!**

