

STAFF PRESENTATIONS ALASKA BOARD OF FISHERIES

SOUTHEAST ALASKA DIVE FISHERIES



February 28- March 9, 2025
Ketchikan, Alaska

Report by Quinn Smith

Alaska Department of Fish and Game, Division of Commercial Fisheries, Southeast Region



Proposals

Geoduck

- **Increase number of divers per vessel (212)**
- **Change how harvest levels are calculated (213)**
- **Modify fishery closure threshold (214, 215)**
- **Clarify allowable harvest in mariculture sites (216)**



Proposals

Sea Cucumber

- **Increase weekly opening periods (217)**
- **Extend season (218)**
- **Clarify possession definition (219, 220)**
- **Disallow sea cucumber mariculture sites in areas open to commercial sea cucumber harvest (221)**



Proposals

Sea Urchin

- **Allow for concurrent possession of red and green sea urchins (232)**



Geoduck Clams



Geoduck Clams



- Live market
- Dug by divers
- 3-4 feet in sand
- Grab neck and use pressurized water jet to liquefy sand
- Mature at 3 years, live to 130+
- Highly variable recruitment

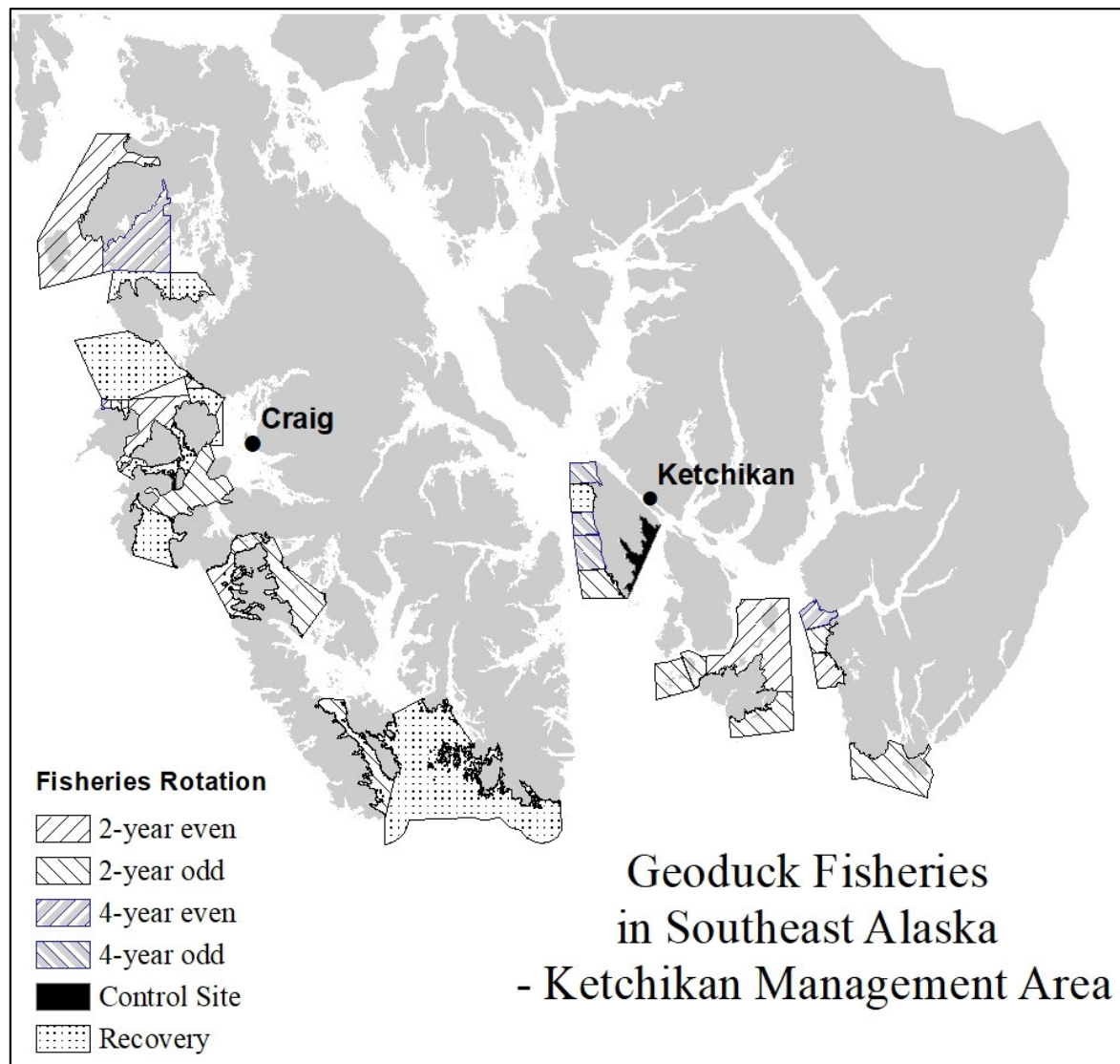
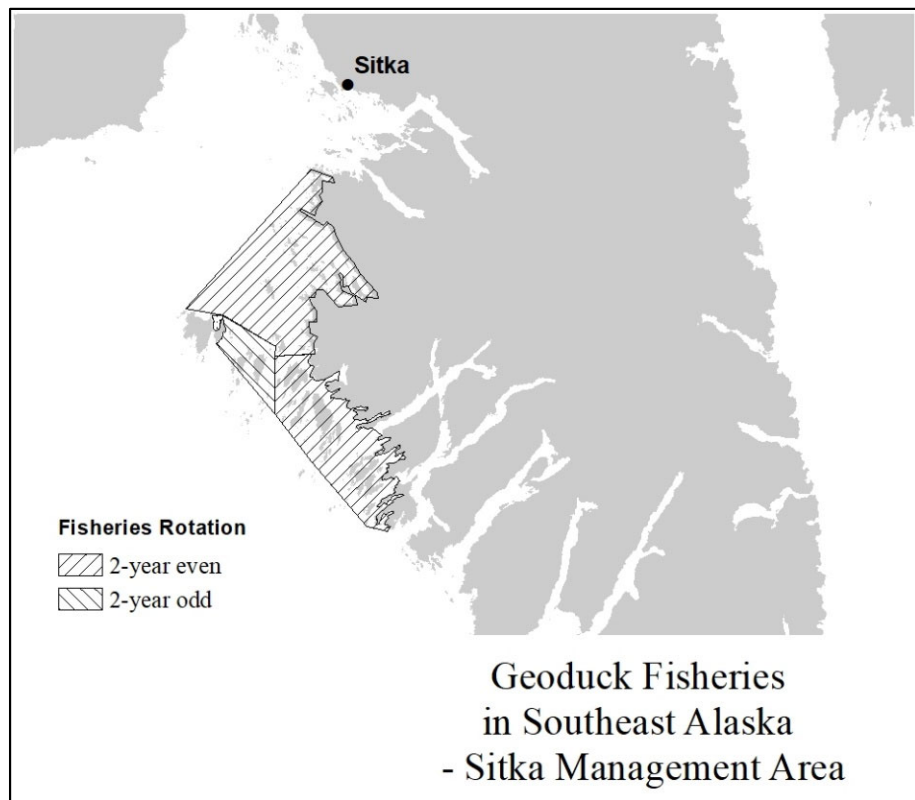


Pertinent Geoduck Fishery Regulations

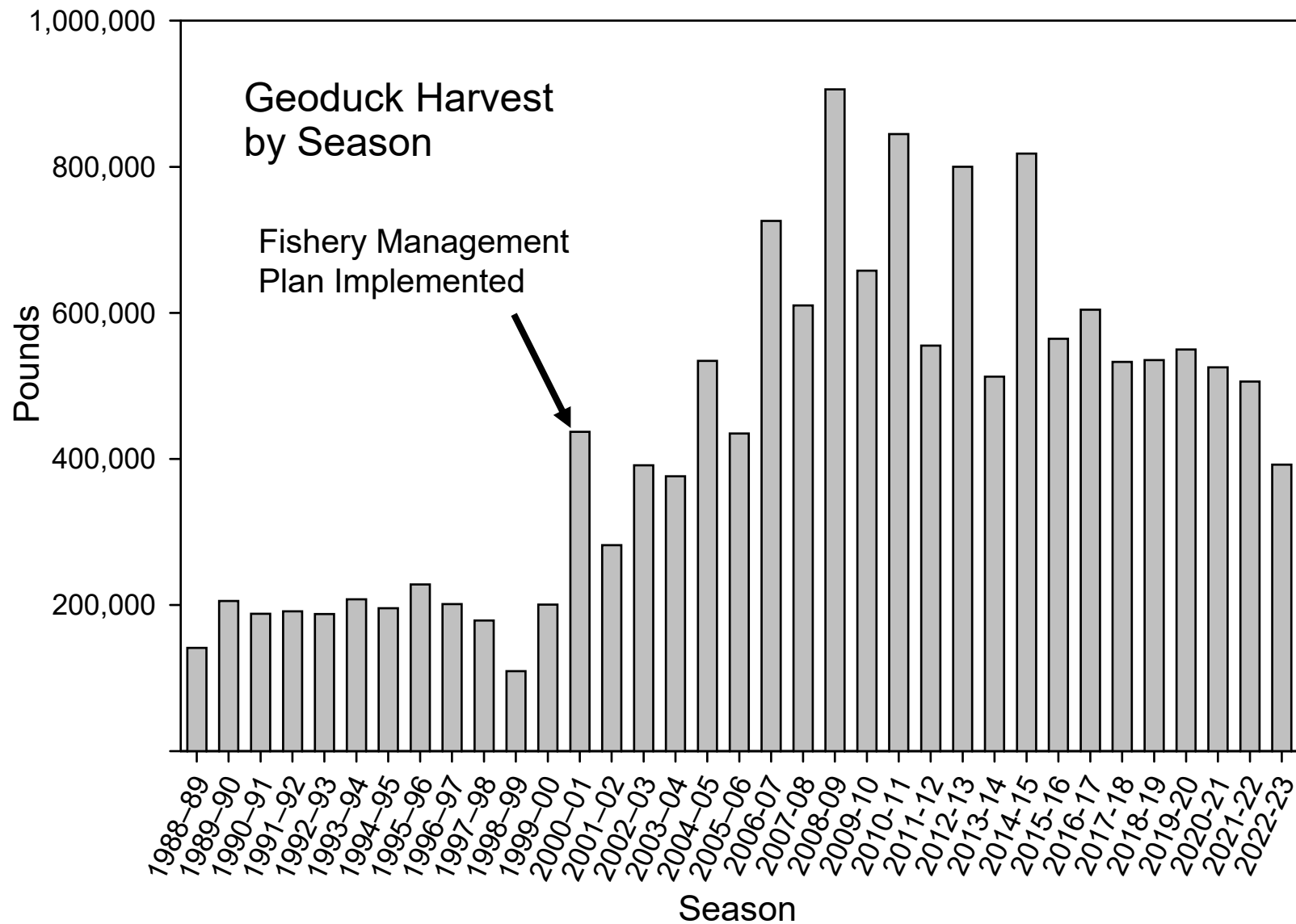
- **Oct 1- Sep 30 season**
- **100% retention, no size limit**
- **1,000-pound trip limit**
- **Maximum of 2 permit holders fishing per vessel**
- **Surveyed at least every 12 years**
 - **GHL 2% per year of most recent biomass estimate**
 - **Regulations do not define how biomass is calculated**
 - **If biomass falls below 30% of original estimate, fishery is closed**



Distribution of Harvest in the Geoduck Fishery



Harvest and Effort in the Geoduck Fishery



California Sea Cucumber



- Hand Picked
- Eviscerated at sea
- Meat & skin product

- Mature 4+ years
- Live 12+ years
- Highly variable recruitment

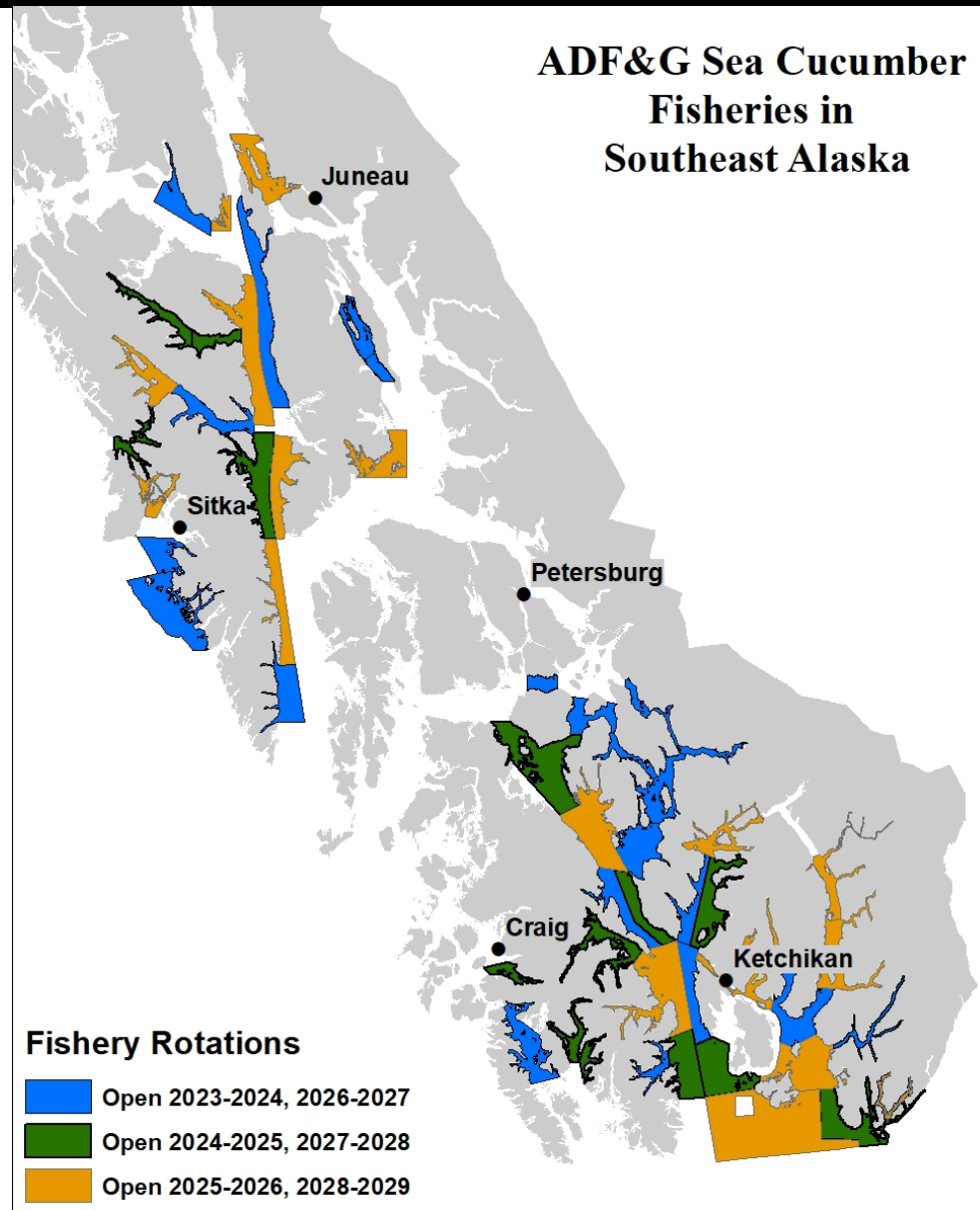


Pertinent Sea Cucumber Fishery Regulations

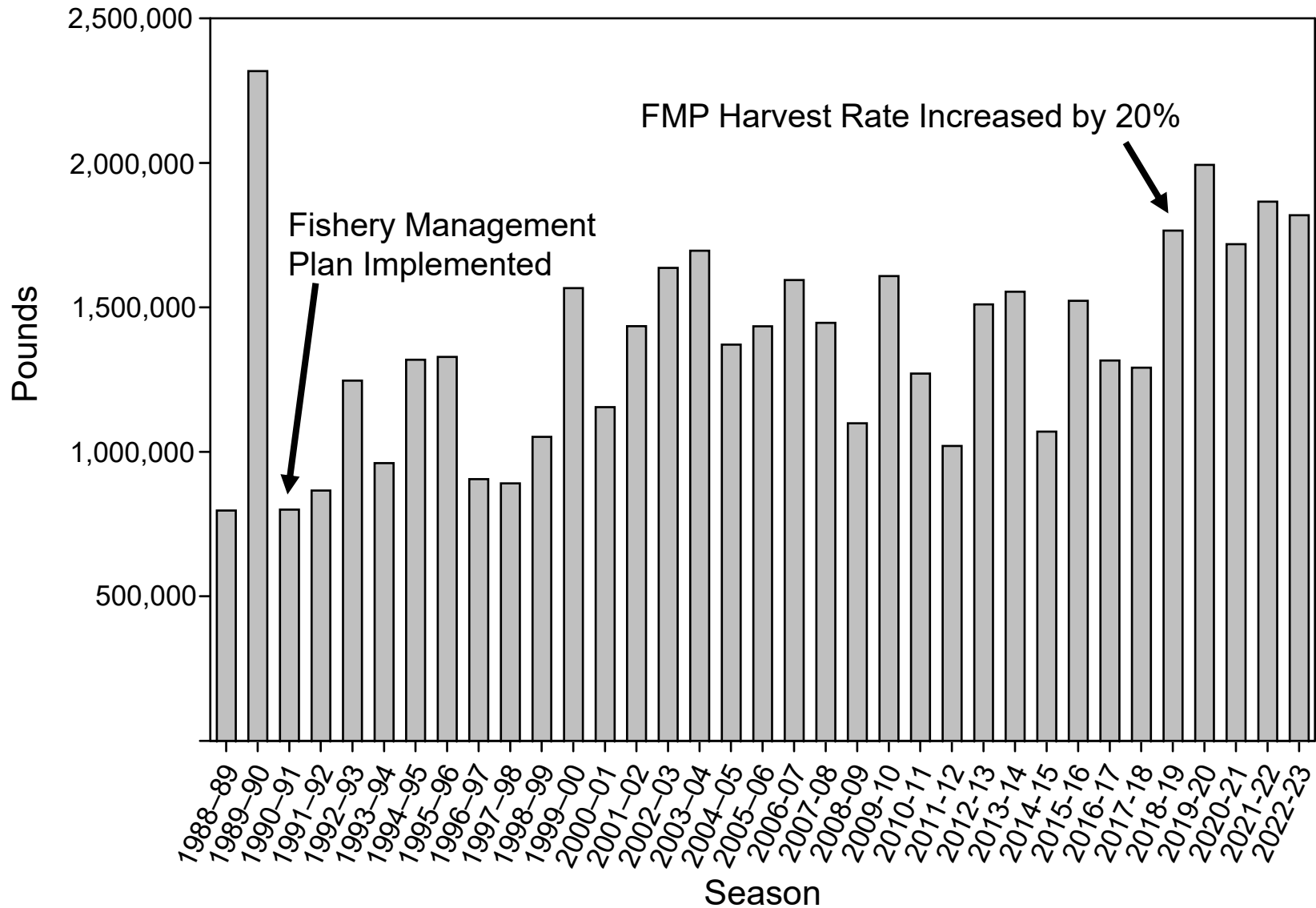
- **Oct 1- March 31 season**
 - **Mondays 8:00-15:00, Tuesdays 8:00-12:00**
 - **Nov-Mar department can extend or shorten fishing periods**
- **2,000 weekly trip limits**
- **Maximum of 2 permit holders fishing per vessel**
- **Areas must be surveyed by the department within two years of fishery opening**
 - **Guideline harvest level calculation in regulation**
 - **Areas must remain closed for 2 seasons after being fished**



Distribution of Harvest in the Cucumber Fishery



Harvest and Effort in the Sea Cucumber Fishery

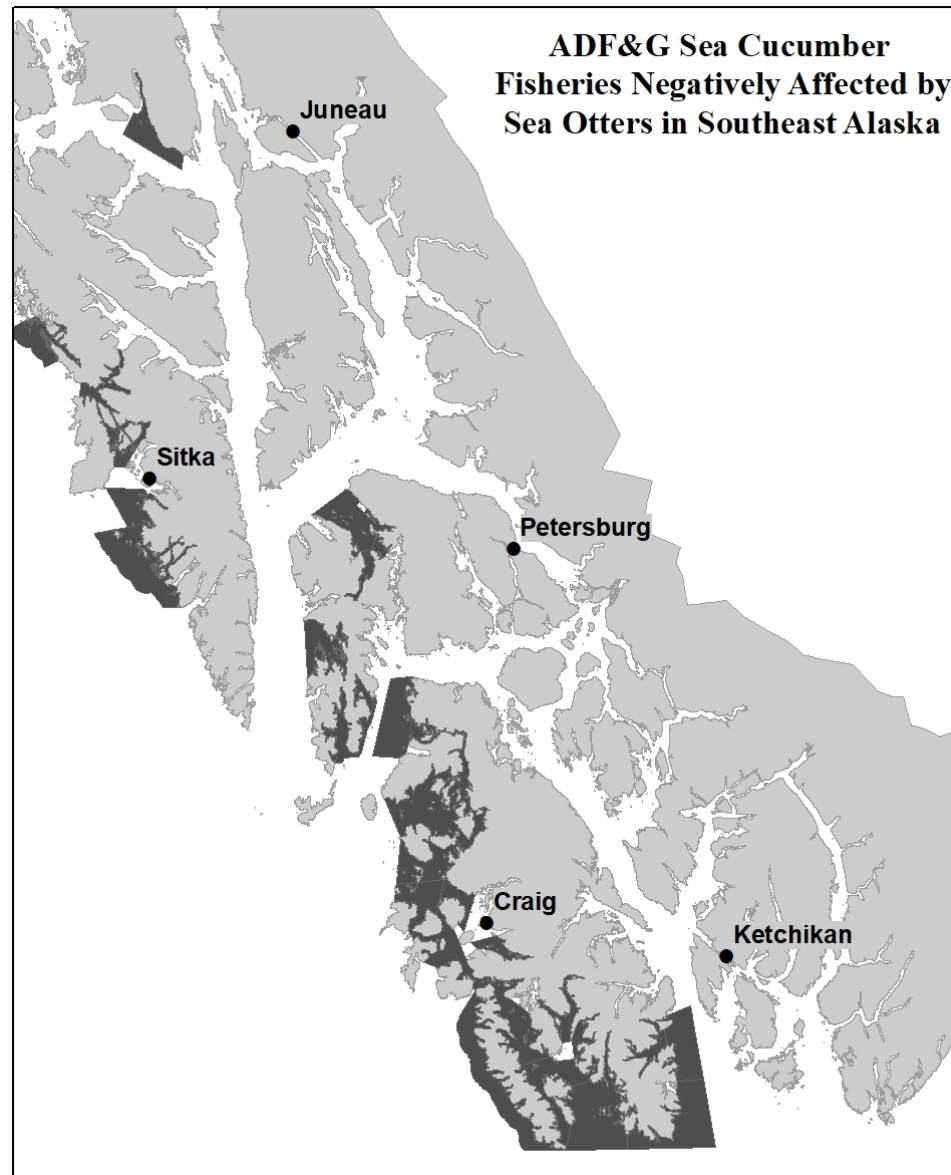


Sea Otter Impact

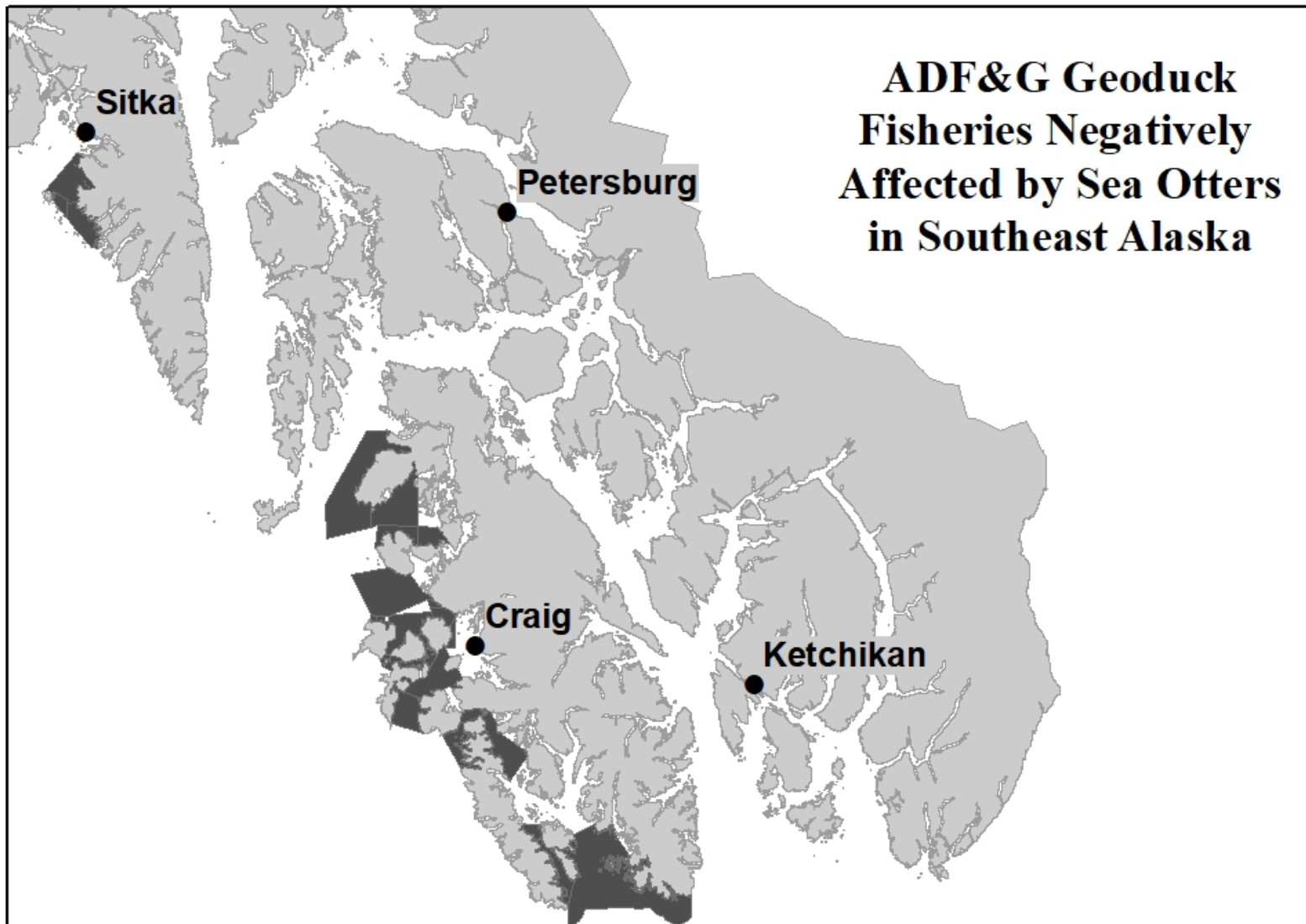
- **Increasing Sea Otter population has a substantial impact on dive fisheries**
- **Reduce standing stock biomass**
- **Reduced GHs & area closures**
- **When closed areas with heavy otter impact have been resurveyed biomass of dive fisheries species have continued to decline**
 - **Lack of harvestable surplus in heavily otter impacted areas**



Sea Otter Impact



Sea Otter Impact



Questions?

Geoduck

- Increase number of divers per vessel (212)
- Change how harvest levels are calculated (213)
- Modify fishery closure threshold (214, 215)
- Clarify allowable harvest in mariculture sites (216)

Sea Cucumber

- Increase weekly opening periods (217)
- Extend season (218)
- Clarify possession definition (219, 220)
- Disallow sea cucumber mariculture sites in areas open to commercial sea cucumber harvest (221)

Sea Urchin

- Allow for concurrent possession of red and green sea urchins (232)

