

# STAFF PRESENTATIONS ALASKA BOARD OF FISHERIES

---

## SOUTHEAST ALASKA SHRIMP POT FISHERY



February 28- March 9, 2025  
Ketchikan, Alaska

Report by Quinn Smith

Alaska Department of Fish and Game, Division of Commercial Fisheries, Southeast Region



# Proposals

---

- **Seasonal closure for noncommercial fisheries (222)**
- **Increase tunnel size for noncommercial pots (223)**
- **Change commercial season start date (224, 225)**
- **Reduce GHL, pot limits, and allowable gear (226)**
- **Allow permit stacking (227)**
- **Allow slinky pots in commercial fishery (228)**
- **Clarify redundant commercial fishing area descriptions (229)**



# Species

---

Spot Shrimp-97%



Coonstripe Shrimp-3%



# Spot Shrimp Lifecycle

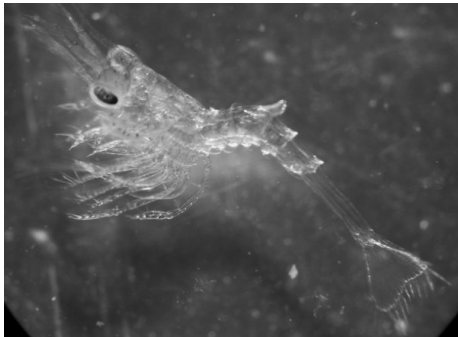
---



**Egg**

**→ Larvae**

**→ Juvenile**



**→ Mature male**

**→ Transitional**

**→ Mature female**



# Spot Shrimp Lifecycle

---

- Both male and female shrimp are available to commercial gear
- Females are most targeted due to size
- Females are spawning stock

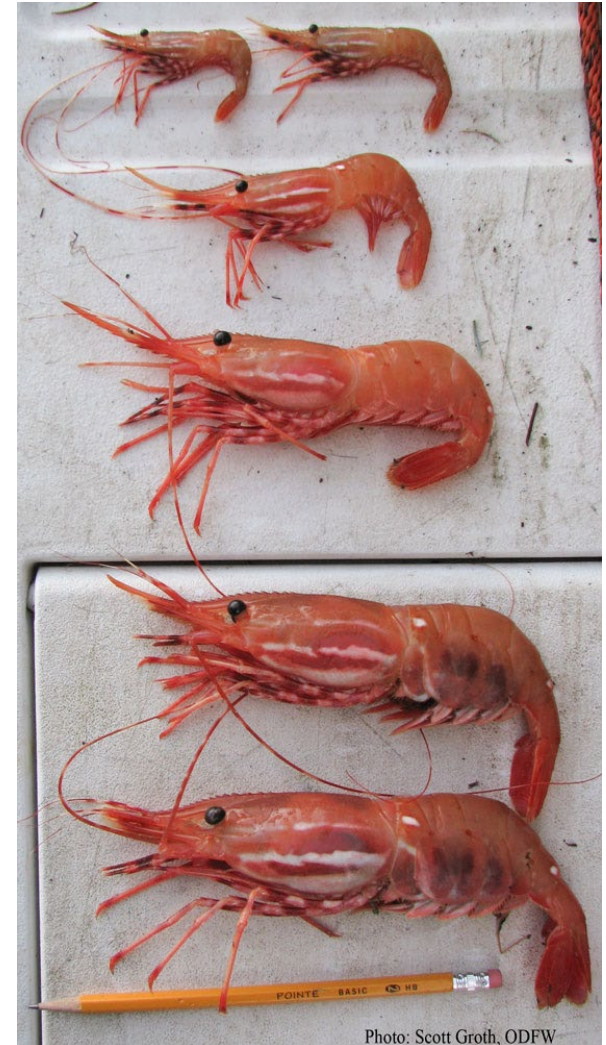
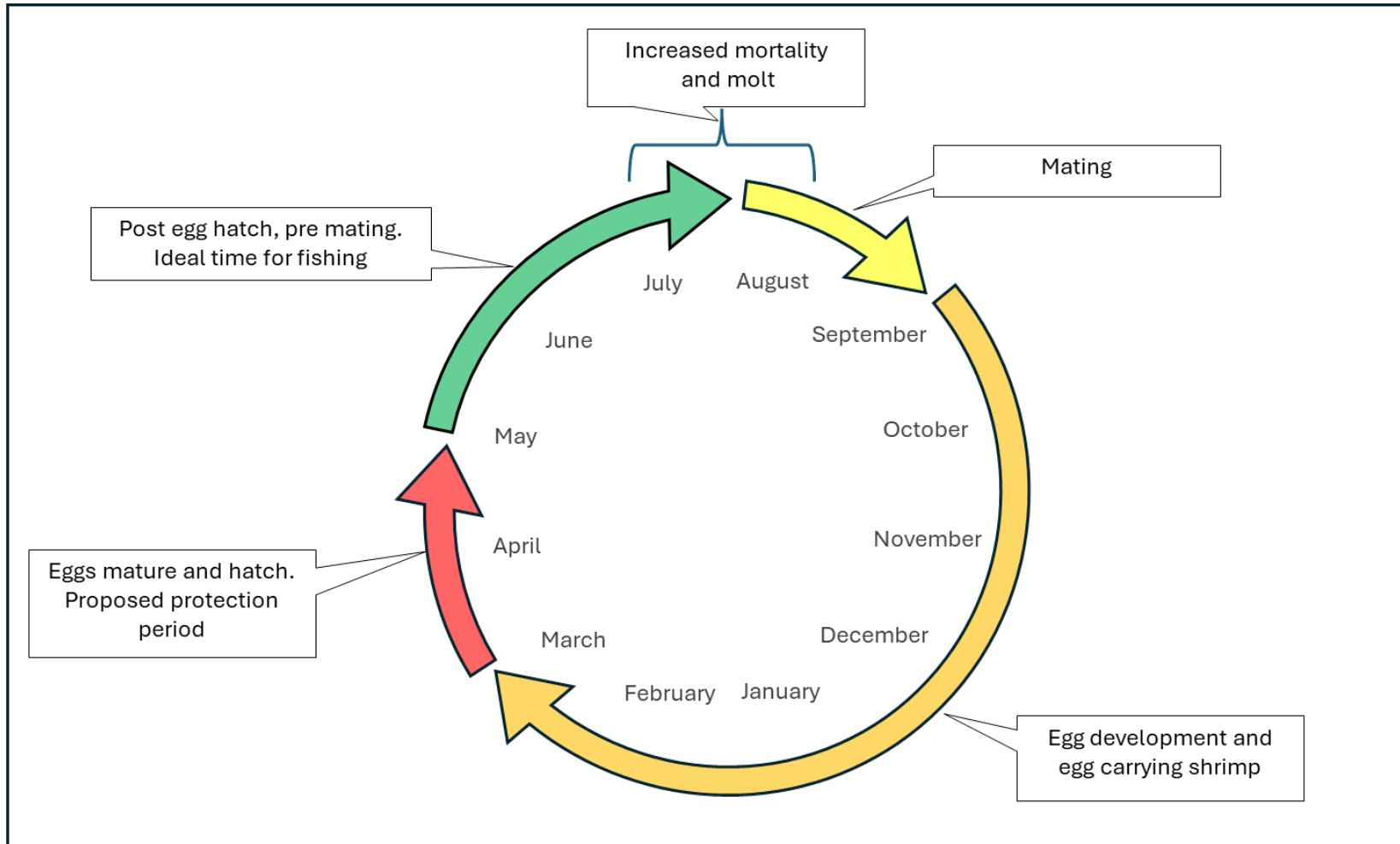


Photo: Scott Groth, ODFW



# Spot Shrimp Lifecycle



# Assessment Program

---

- **Index based**
  - No population estimation
- **Data sources**
  - **Fishery independent:**
    - Preseason surveys (~65% of harvest)  
Districts 1, 2, 3, 7, 12, 13
  - **Fishery dependent**
    - On-the-grounds sampling
    - Dockside sampling
    - Mandatory logbook program for C/P vessels
    - Fish tickets



# Management Challenges

---

- **Declining harvests and population health indicators**
  - Many shrimp populations in the region are in decline.
  - 2024 fall survey shows promising signs that may be due to season change
    - But it is still too early to say definitively
- **Changing markets, product types, and season**
  - Lead to discrepancies in data available for management of the fishery.
- **Latent permits**
  - Only 44% of active permits made landings in 2023/24.
- **Subsistence, personal use, & sport harvest**
  - Have only recently started to be monitored
- **Lack of area specific basic biological information**
  - Growth rate
  - Lifespan
  - Spawn success rate





# Pertinent Commercial Fishery Regulations

---

- **Limited entry implemented in 1998**
- **Season**
  - **May 15 - July 31 and by EO Oct 1- Feb 28**
    - **Changed at 2022 BOF meeting to better fit reproductive cycle**
      - **Previously Oct 1 - Feb 28 and by EO May 15 - July 31**
    - **75% of annual harvest is caught in first 2 weeks**
    - **93% in first month**
- **Daily fishing hours of 8:00 am to 4:00 pm**
- **Gear**
  - **1 Permit per vessel**
  - **100 large pots or 140 small pots**
    - **Minimum mesh size, height, number tunnels, etc.**



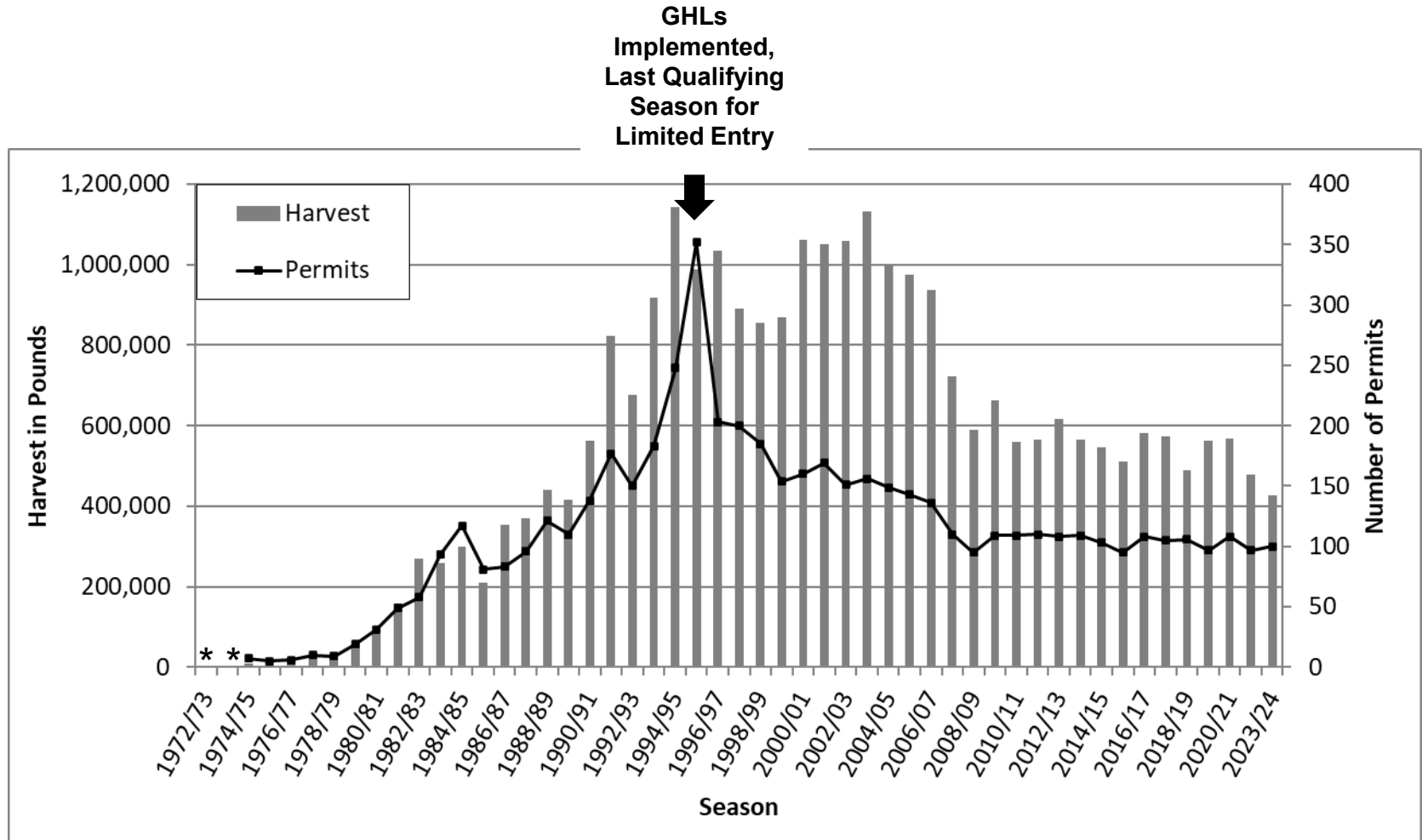
# Commercial Fishery Management

- **GHLs set based on biological data and fishery performance**
- **GHLs set on a District or Section level**
- **GHLs kept in place for minimum of 3 years to determine effect on stock (except in extreme cases)**

Area	GHL				
	2018/19	2019/20	2020/21	2021/22	2023/24 <sup>d</sup>
1	64,000	<b>50,000</b>	50,000	50,000	50,000
2	<b>29,400</b>	<b>30,000</b>	40,000	40,000	40,000
3-A	114,000	114,000	114,000	114,000	114,000
3-B/C	30,000	30,000	30,000	<b>20,000</b>	20,000
4	20,000	20,000	20,000	20,000	20,000
5	12,000	12,000	12,000	12,000	12,000
6-B/C/D <sup>b</sup>	<b>34,300</b>	<b>30,000</b>	<b>30,000</b>	<b>15,000</b>	15,000
7	<b>74,300</b>	74,300	<b>82,000</b>	74,300	74,300
8-B & 6-A <sup>b</sup>	<b>15,000</b>	15,000	15,000	15,000	15,000
8-A & 10-C <sup>b</sup>	<b>12,000</b>	12,000	12,000	12,000	12,000
9	<b>6,500</b>	6,500	6,500	6,500	<b>10,000</b>
10-A/B <sup>b</sup>	<b>35,000</b>	35,000	35,000	35,000	35,000
11-Seymour <sup>a</sup>	12,000	10,000	Closed	Closed	Closed
11-Remainder	4,000	Closed	Closed	Closed	4,000
12-Tenakee	<b>7,500</b>	7,500	<b>10,000</b>	<b>10,000</b>	<b>Closed</b>
12-Remmainder	Closed	<b>7,500</b>	Closed	7,500	Closed
13-A/B	15,000	15,000	15,000	15,000	15,000
13-C	<b>16,000</b>	16,000	<b>Closed</b>	Closed	Closed
14	7,500	Closed	7,500	Closed	7,500
15	11,000	11,000	11,000	11,000	11,000
16	15,000	Closed	Closed	Closed	12,000
<b>TOTAL</b>	<b>534,500</b>	<b>495,800</b>	<b>490,000</b>	<b>457,300</b>	<b>466,800</b>



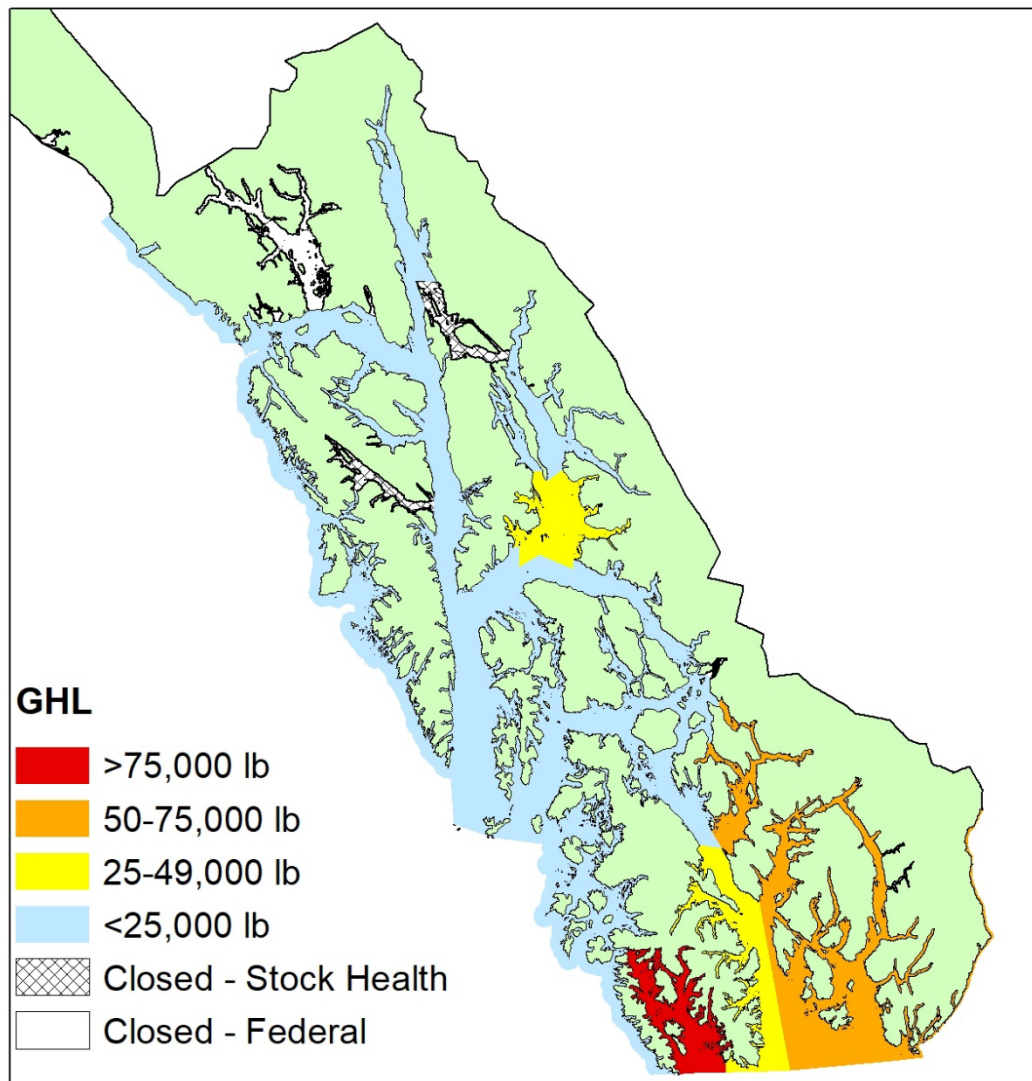
# Harvest and Effort in the Commercial Shrimp Pot Fishery



\* Fewer than 3 permits were fished; information is confidential.



# Distribution of Harvest in the Commercial Shrimp Pot Fishery



# Noncommercial Fishery Regulations

## Sport

## Subsistence & PU

<ul style="list-style-type: none"> <li>No closed season</li> </ul>	
<ul style="list-style-type: none"> <li>Permit required</li> </ul>	
<ul style="list-style-type: none"> <li>Gear               <ul style="list-style-type: none"> <li>5 Pots per person</li> <li>10 per vessel</li> <li>Pots may not be longlined</li> </ul> </li> </ul>	<ul style="list-style-type: none"> <li>Gear               <ul style="list-style-type: none"> <li>10 Pots per person</li> <li>20 per vessel</li> <li>Pots may be longlined</li> </ul> </li> </ul>
<ul style="list-style-type: none"> <li>Limits               <ul style="list-style-type: none"> <li>3 quarts or 3 lb.</li> </ul> </li> </ul>	<ul style="list-style-type: none"> <li>Limits               <ul style="list-style-type: none"> <li>None, except 10 gallons in District 13</li> </ul> </li> </ul>
<ul style="list-style-type: none"> <li>Pot specifications (maximum)               <ul style="list-style-type: none"> <li>4 tunnels                   <ul style="list-style-type: none"> <li>15-inch eye perimeter</li> </ul> </li> <li>Bottom perimeter 153 inches</li> <li>25 cubic feet volume</li> <li>Escape mechanism</li> </ul> </li> </ul>	



# Regional Harvest

---

Year	Commercial	Subsistence & Personal Use	Sport	% Commercial
2019	553,357	174,346	26,467	73.4%
2020	568,373	144,725	7,818	78.8%
2021	482,494	108,041	13,318	79.9%
2022	*	85,191	13,404	
2023	421,944	88,213	15,573	80.3%

\* Due to season opening change from Oct 1, 2022 to May 15, 2023 2022 commercial harvest is not representative



# Questions?

---

**222 – Seasonal Mar-Apr closure for noncommercial fisheries**

**223 – Increase tunnel size for noncommercial pots**

**224 & 225– Change commercial season start date**

**226 – Reduce GHL, pot limits, and allowable gear**

**227 – Allow permit stacking**

**228 – Allow slinky pots in commercial fishery**

**229 – Clarify redundant commercial fishing area descriptions**

