

# ADF&G STAFF ORAL PRESENTATION ALASKA BOARD OF FISHERIES

---

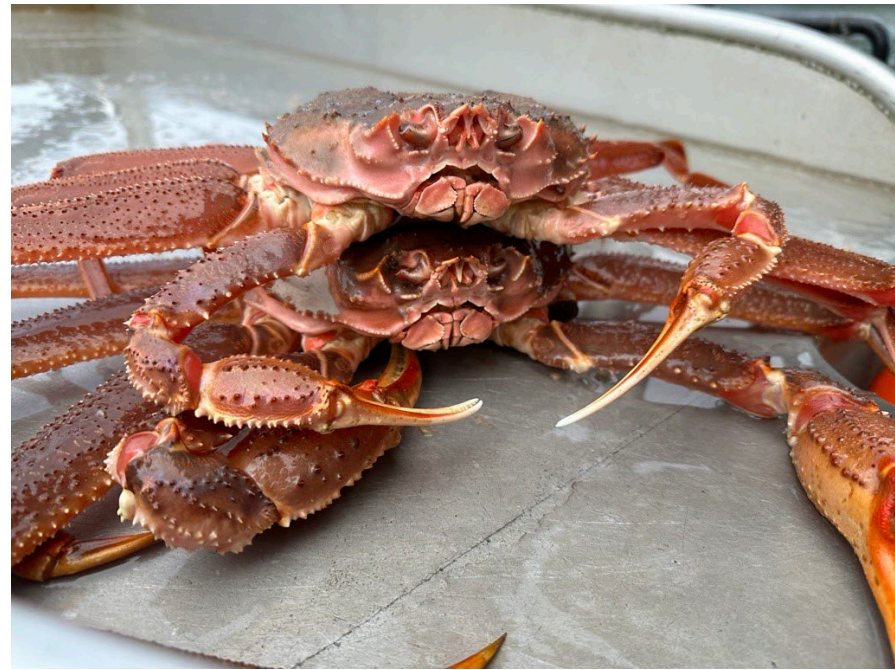


## Southeast Alaska Tanner Crab Commercial Fishery

Tessa Bergmann, Fishery Biologist  
Commercial Fisheries, Southeast Region

# Outline

---



- Commercial Tanner crab history and background
- Fishery management and regulations
- Research and stock assessment
- Harvest strategy
- 2025 Board of Fisheries proposals

# *Chionoecetes bairdi*

Female Tanner crab:  
85,000-424,000  
eggs/clutch



Depths up to  
238 fathoms

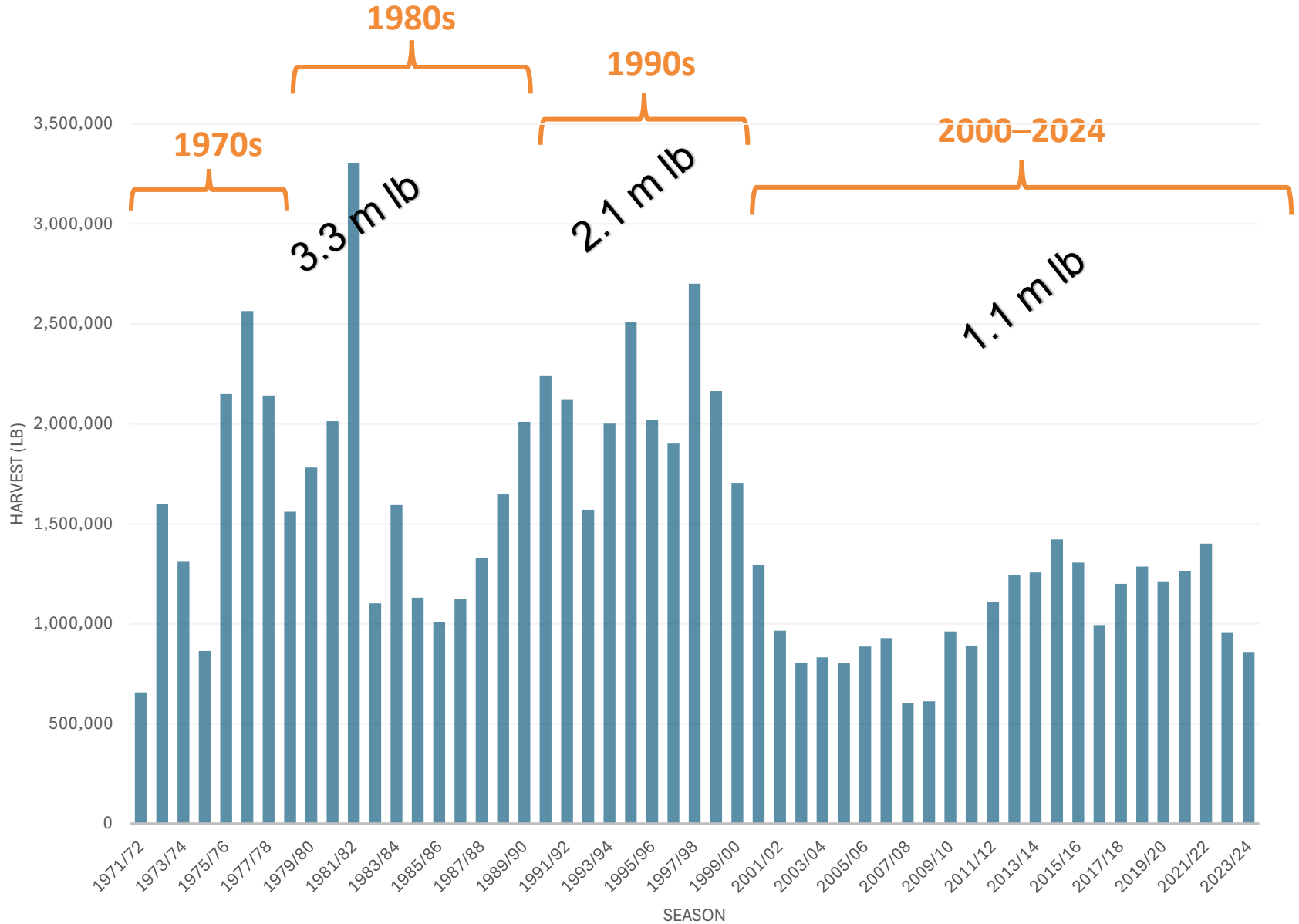
Avg male  
weighs 2.2-  
2.9 lb

# Southeast Commercial Tanner Crab Fishery

- Male-only harvest
- 3-S Management – size, sex, and season
- Minimum legal size (carapace width) set to allow reproductive activity prior to entering fishery
- Seasons established to avoid sensitive life history events (molting/mating)



# Commercial Tanner Crab Harvest



# Crab Survey Areas

## SUMMER

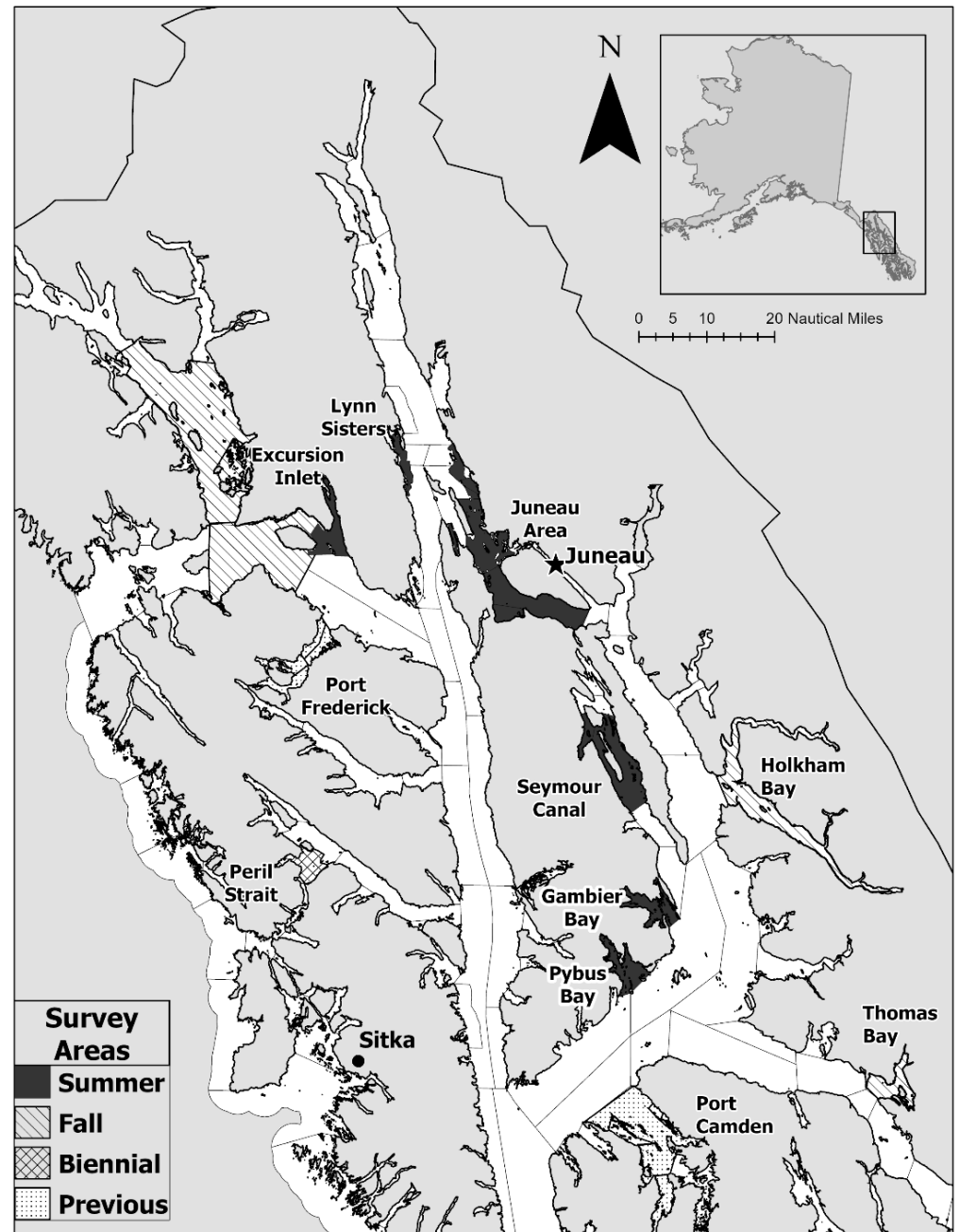
- Excursion Inlet
- Lynn Sisters
- Seymour Canal
- Gambier Bay
- Pybus Bay
- Peril Strait
- Juneau

## FALL

- Glacier Bay
- Icy Strait
- Holkham Bay
- Thomas Bay

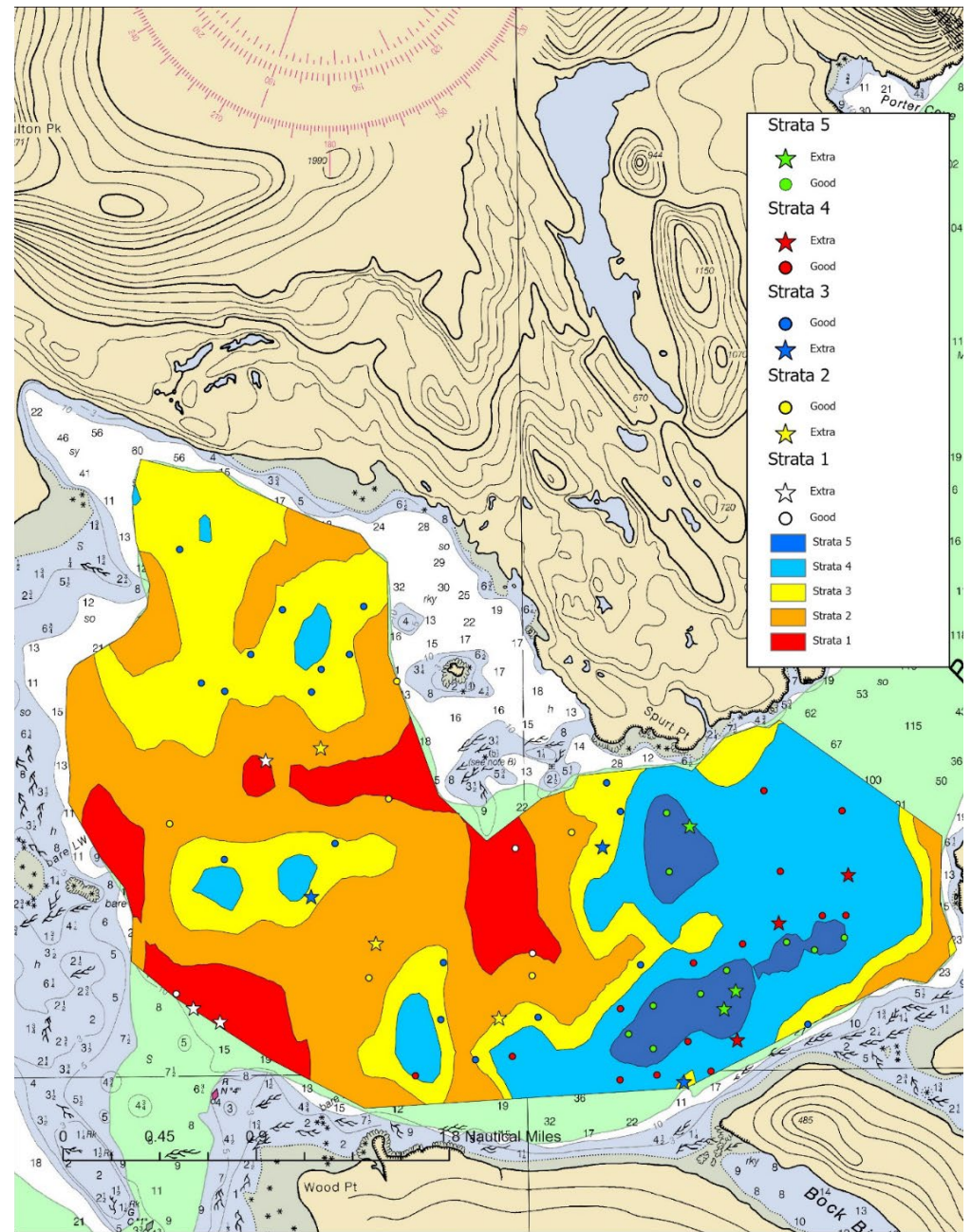
## PREVIOUS

- Port Frederick
- Port Camden



# Tanner Crab Stock Assessment Survey

- 5 density strata
- Pot locations are randomly generated
- Minimum distance of 0.1 nm between pots



# Tanner Crab Stock Assessment Survey

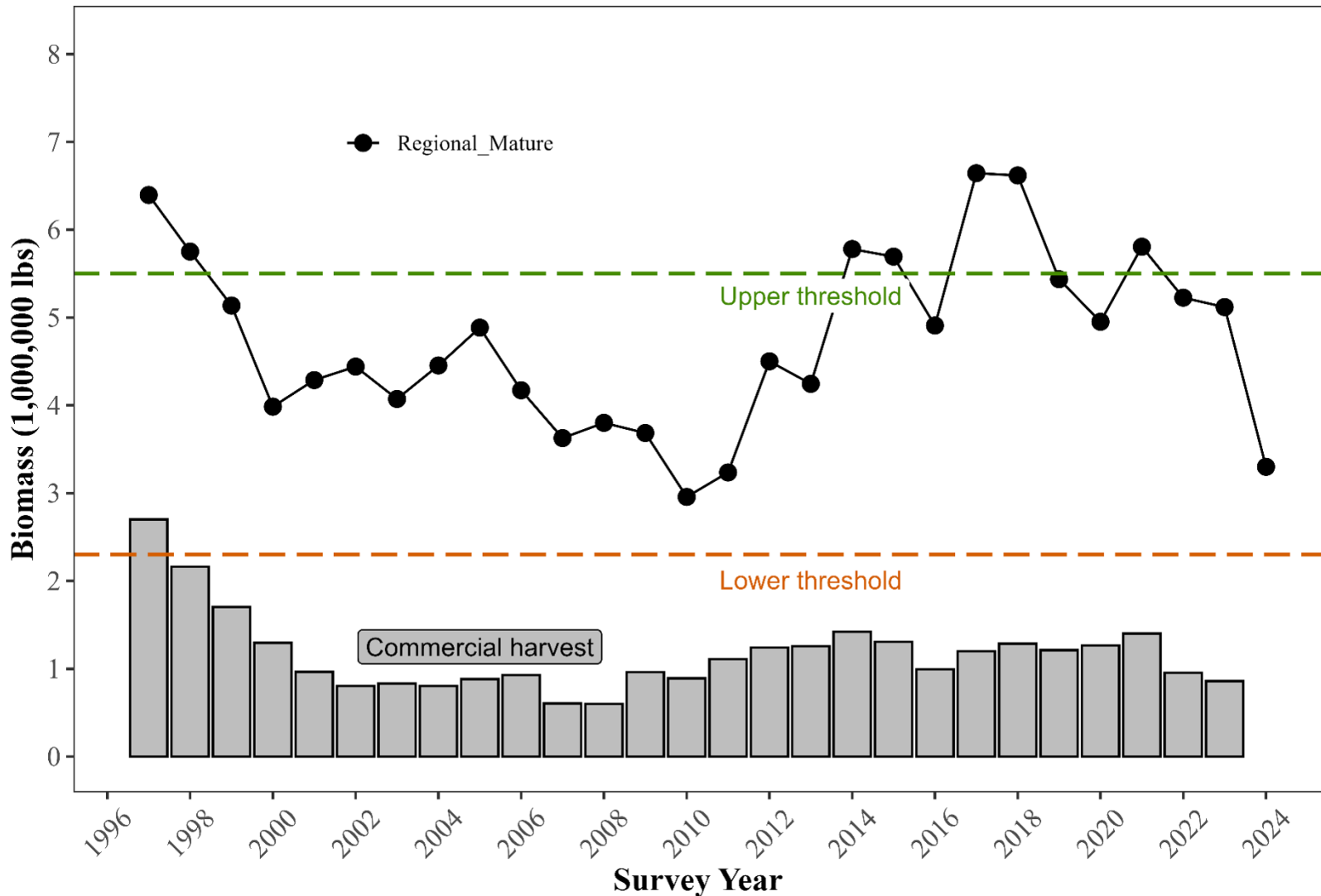
## PRIMARY OBJECTIVES

- Collect Tanner crab biological information
- Obtain pre-season index of legal and pre-recruit male abundance and female abundance/ reproductive status
- Use results from survey to determine whether biomass is sufficient for a commercial fishery
- Collect biological information on other commercial crab bycatch species, such as king crab and Dungeness crab

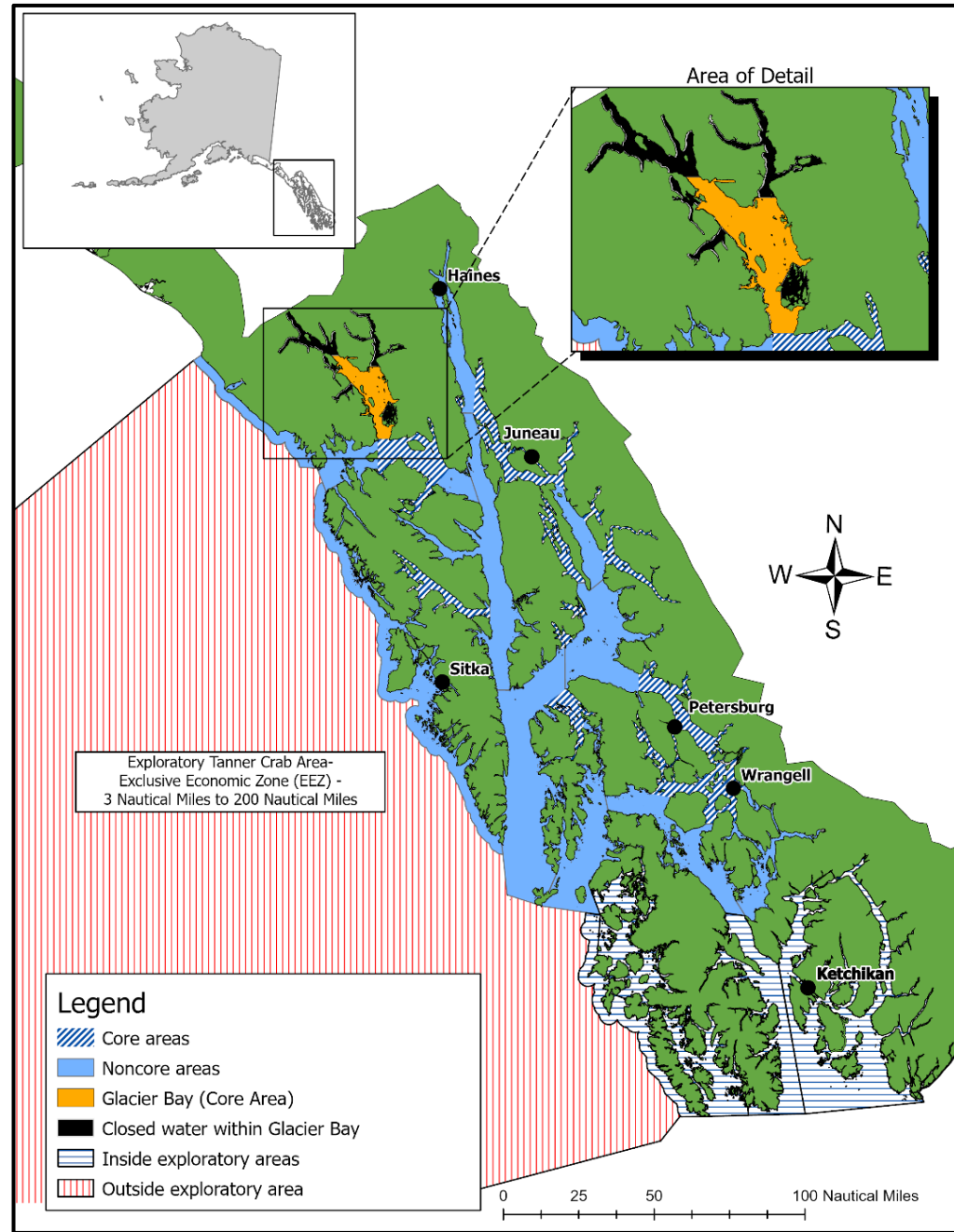




# Tanner Crab Assessment & Management



# Southeast Tanner Crab Commercial Harvest Areas



# Southeast Tanner Crab Harvest Strategy

- ❷ Five-day minimum fishery in core areas when over 2.3 m lb threshold
- ❸ Six-day minimum fishery in core areas when over 5.5 m lb threshold
- ❹ Noncore areas are open an additional five days after the core areas close
- ❺ Outside exploratory areas open through March 31



Pots Registered	Additional Fishing Days	Additional Fishing Days
	<i>Mature Biomass is Between 2,300,000 and 5,500,000 lb</i>	<i>Mature Biomass is Greater than 5,500,000 lb</i>
1,600 – 2,399	4 Additional Days	5 Additional Days
2,400 – 3,199	3 Additional Days	4 Additional Days
3,200 – 3,999	2 Additional Days	3 Additional Days
4,000 – 5,599	1 Additional Days	2 Additional Days
5,600 – 7,000	0 Additional Days	1 Additional Days

# 2025 Board of Fisheries Proposals

**Proposal 240:** allow permit holders to have Tanner crab aboard their vessel with GKC gear in fishing condition in an area closed to commercial Tanner crab fishing

**Proposal 244:** modify season start date; open the fishery during the smallest set of falling tides, on the date immediately following the peak high, between February 10 and 17

**Proposal 245:** adopt an 8:00 am start time

**Proposal 246:** add freezing spray to weather criteria for delaying the fishery start date



# 2025 Board of Fisheries Proposals

**Proposal 247:** increase the depth that commercial Tanner crab pots can be stored to 20 fathoms

**Proposal 248:** allow vessels participating in the Tanner crab fishery to operate groundfish slinky pots to catch bait

**Proposal 249:** allow the operation of subsistence, personal use, and sport fish pot gear after unregistering from the commercial Tanner crab fishery



Thank you!

Questions?

