

ADF&G STAFF ORAL PRESENTATION ALASKA BOARD OF FISHERIES



Red, Blue, and Golden King Crab Commercial and Personal Use Fisheries

Adam J. Messmer, Lead King and Tanner Crab Biologist
Division of Commercial Fisheries
Alaska Department of Fish and Game, Southeast Region

Outline

- Life history
- Crab species overview
- Permit types
- Red/Blue king crab
 - Assessment
 - Management
 - Personal Use
- Golden king crab
 - Assessment
 - Management



Southeast Region Commercial and PU King Crab Oral Report RC 3, Tab 15



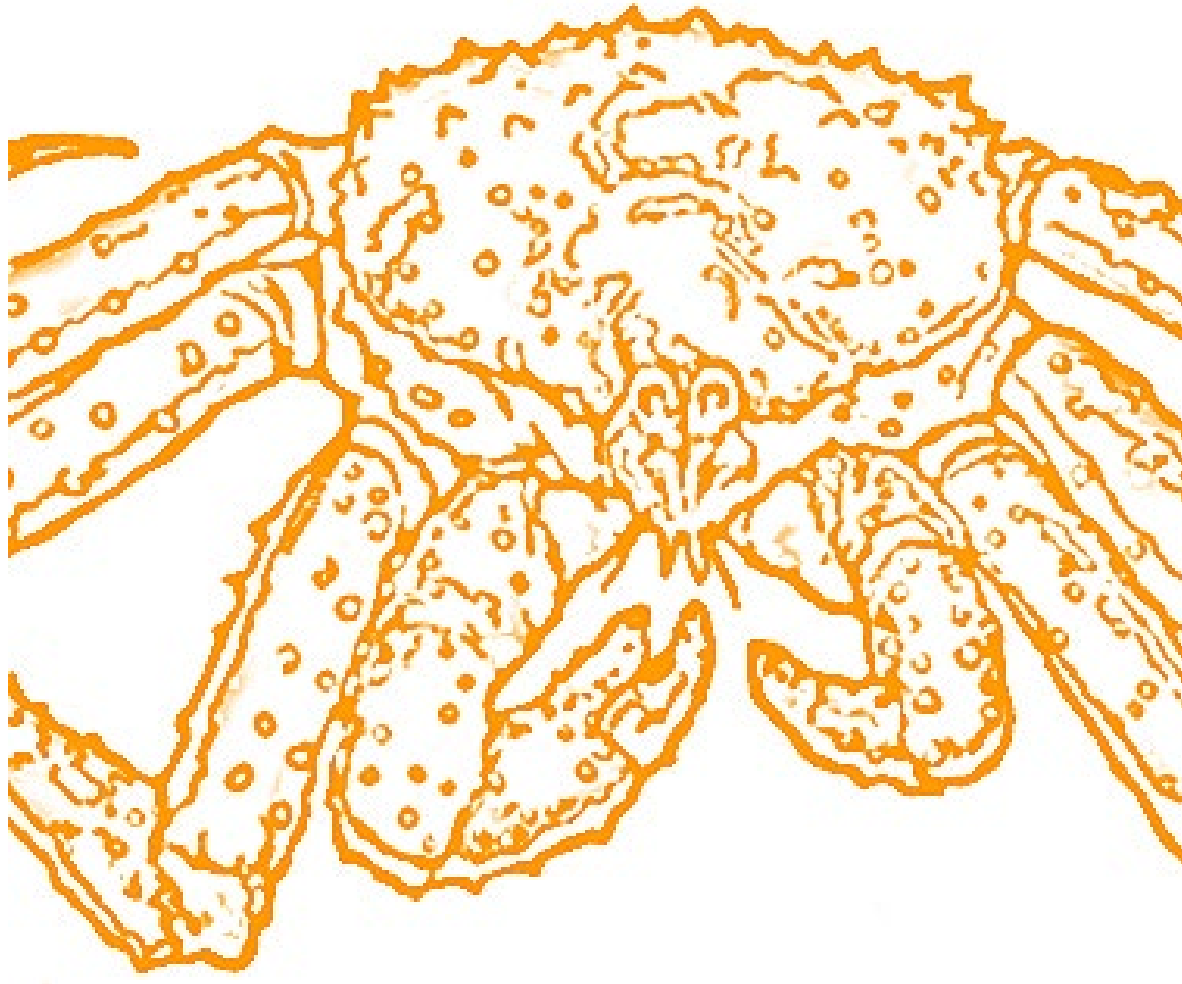
RKC Life History

- Inhabit bays and fjords, 3- 200 m
- Males mature: 6 yrs
- Males legal size: 7-9 yrs
- Females mature: 5 yrs
- Mating annually late winter/
early spring
- Larval release coincides with
spring plankton blooms
- Fecundity: 70,000-270,000 eggs



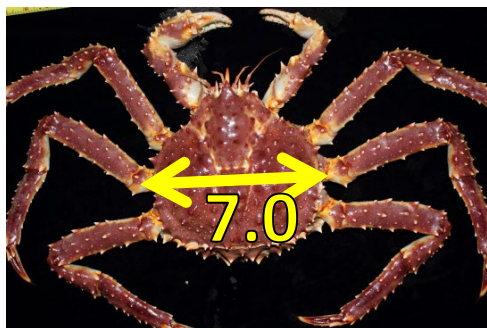
GKC Life History

- Inhabit deepwater rocky substrate, 180-800 m
- Males mature: 6 yrs
- Males legal size: 7-9 yrs
- Females mature: 5 yrs
- 20-month asynchronous reproductive cycle
- Non-feeding larvae that remain at depth
- Fecundity: 9,000-30,000 eggs



Southeast Commercial Crab Fisheries–Overview

- Male-only
- Minimum legal size (carapace width) set to allow reproductive activity prior to entering fishery



- Seasons established to avoid sensitive life history events (molting/mating)

Southeast Alaska King and Tanner Fishing Seasons

	Jan	Feb	Mar	Apr	May	Jun	Jul	Aug	Sep	Oct	Nov	Dec
Tanner												
Red King												
Golden King*												

* Closes by Emergency Order



Southeast Commercial Crab Fisheries—Overview

- Limited Entry Permit Types

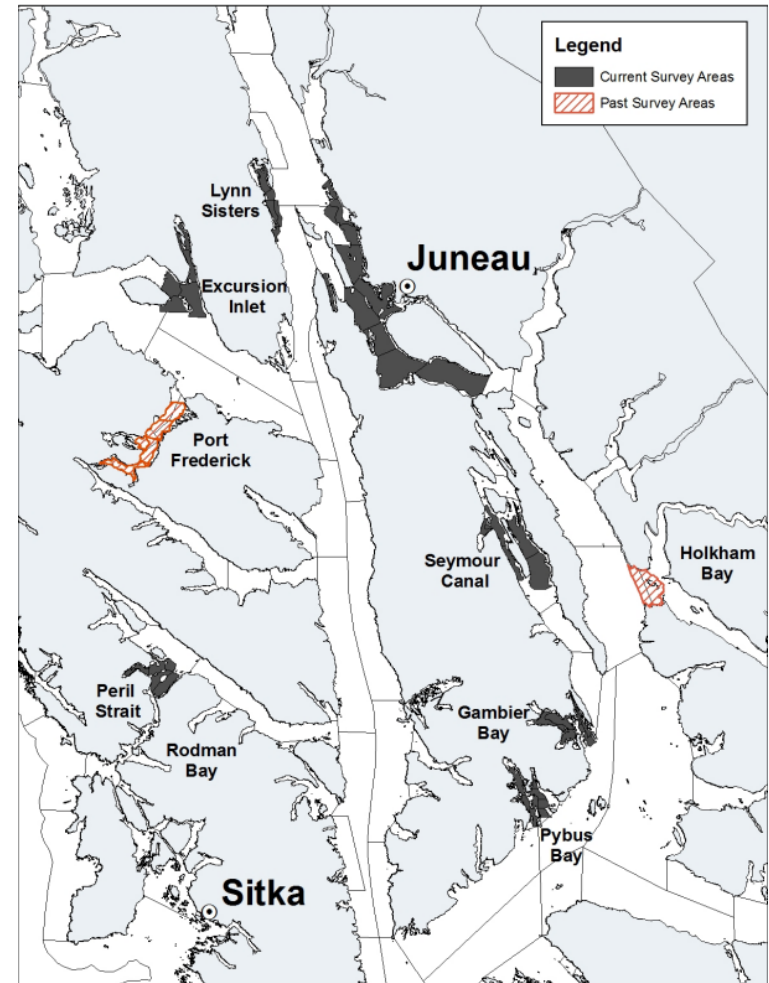
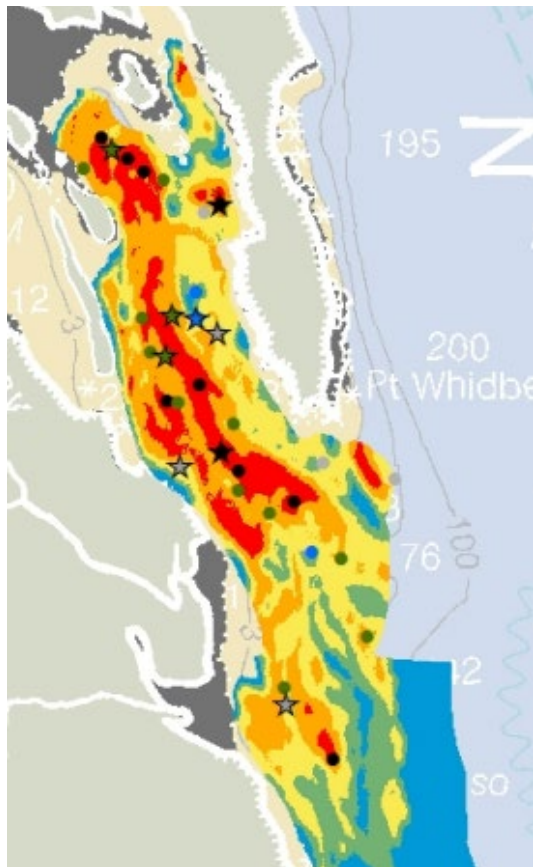
Permit	Number of Permits	Species		
		Tanner	Red/Blue king	Golden king
T19A	26	26		
K19A	9		9	
K29A	5		5	5
K39A	8			8
K49A	15	15	15	
K59A	4	4		4
K69A	30	30	30	30
Maximum permits		75	59	47



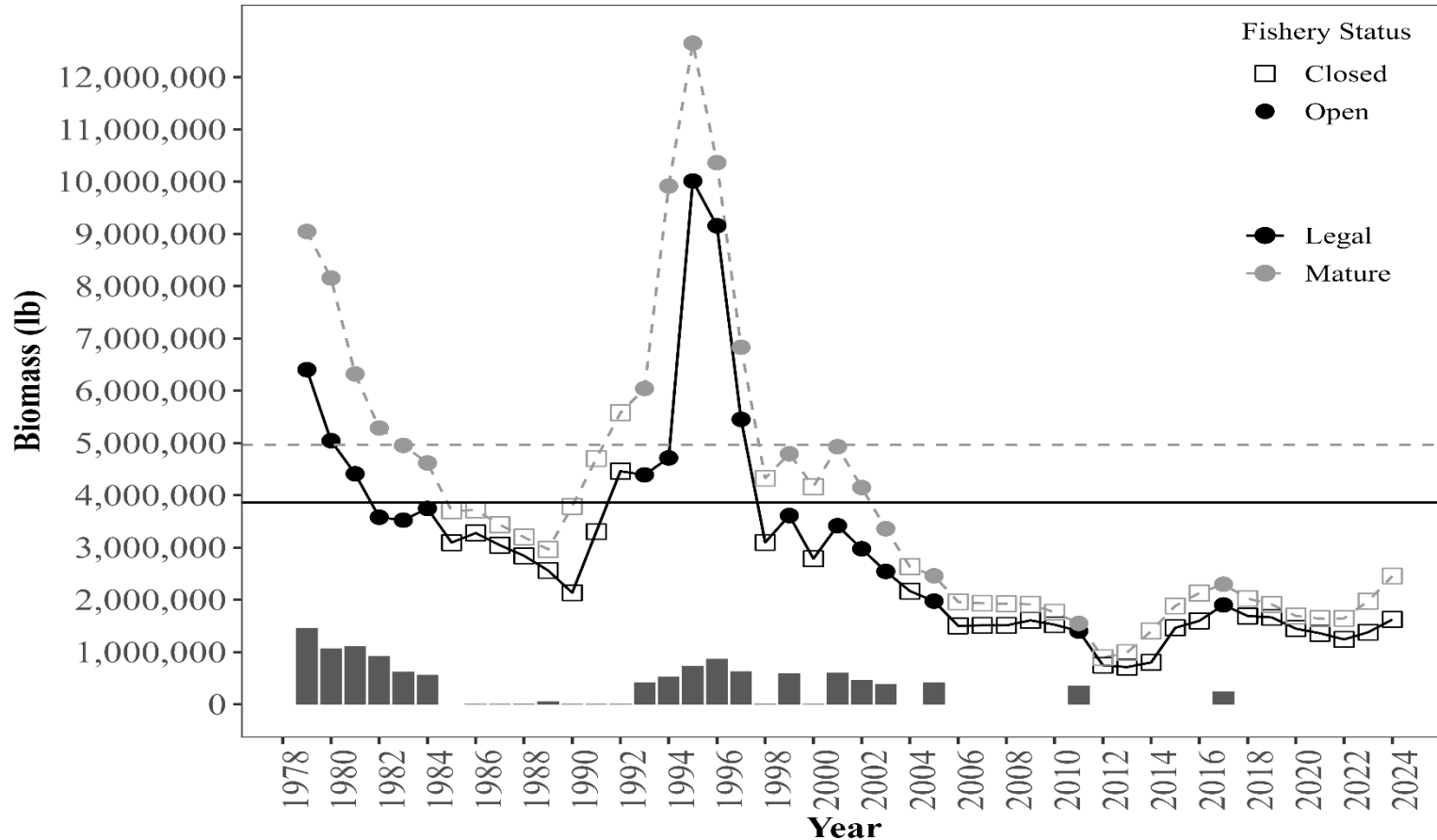
RKC Assessment & Management



- Assessment
 - Density stratified pot survey used to estimate index of abundance
 - 7 areas surveyed annually
 - Collect CPUE and biological information



RKC/BKC Assessment & Management



Regionwide of legal and mature biomass estimates RKC/BKC and commercial harvest in Southeast Alaska, 1979–2024



RKC/BKC Assessment & Management



- Assessment
 - Density stratified pot survey used to estimate index of abundance
 - 7 areas surveyed annually
 - Collect CPUE and biological information
- Management Overview
 - Limited entry (59 permits)
 - Males only, 7-inch minimum CW, season November 1–January 24
 - Pot limits based on GHL (20, 30, 40, or 50 pots)
 - Logbooks and call-ins required
 - Allocation plan for commercial and personal use in Section 11-A/Juneau Area (5 AAC 34.111)





RKC Assessment & Management

Proposal 243: modify the management plan harvest control rules that include fishery dependent, individual catch limits (ICL), and trip limit options.

SE RKC Management Plan: 5 AAC 34.113

- Minimum Guideline Harvest Level (GHL) threshold of 200,000 lb
- Harvest rate determined for legal males based on stock health
- GHLs set by area using survey estimates of biomass and proportion of historic harvest in non-surveyed areas
- Adheres to *“Policy on King and Tanner Crab Resource Management”*

King Crab Personal Use



Proposal 242: reallocate the Section 11-A RKC/BKC fishery entirely to personal use

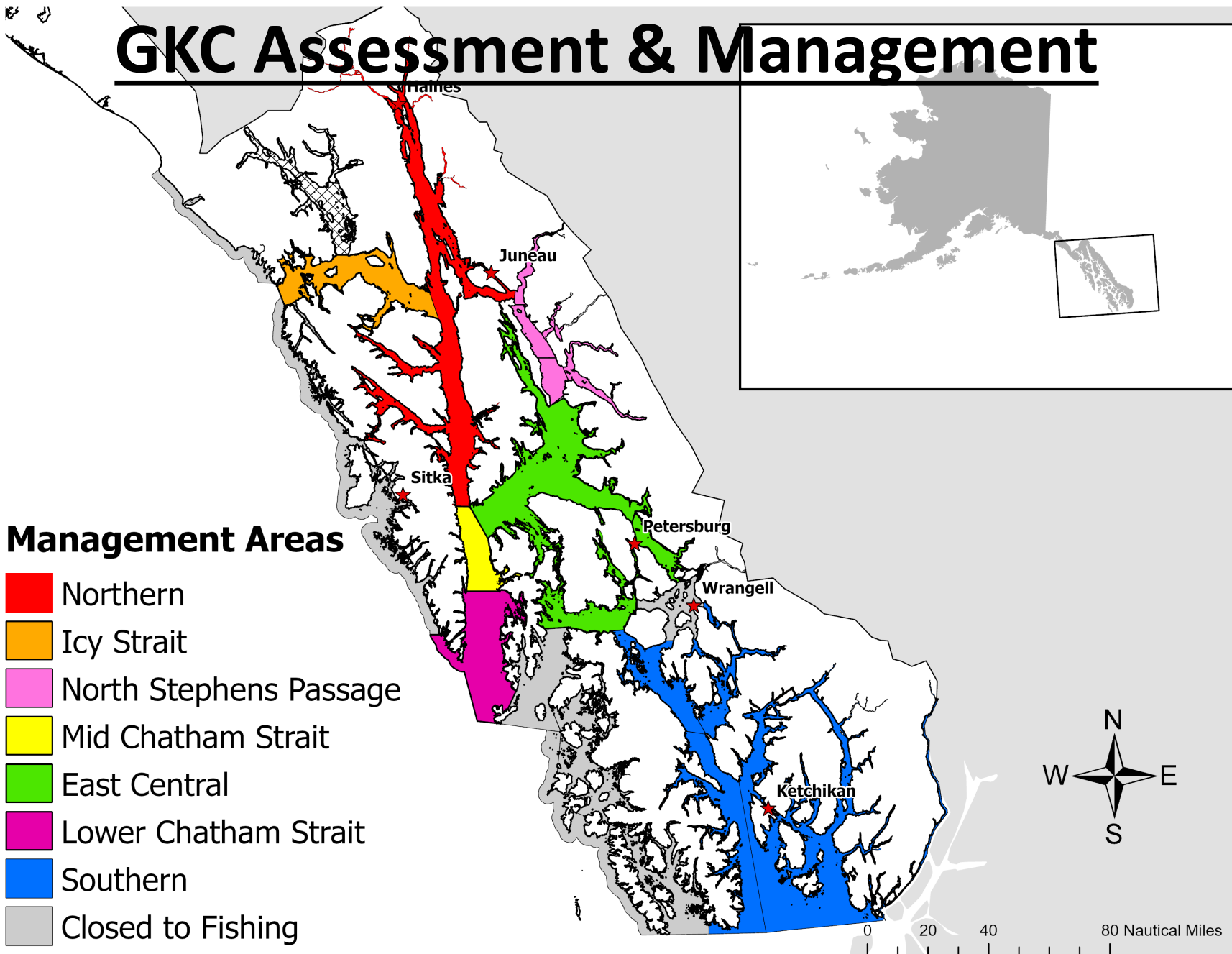
- Alaska resident only fishery
- Juneau Area (Section 11-A)
 - 1996-permits required
 - 1999-household seasonal bag limits (RKC/BKC)
 - GHL allocated (60% PU : 40% Commercial)
 - PU GHL split, summer-50%/winter 10%
 - Short openings (days)



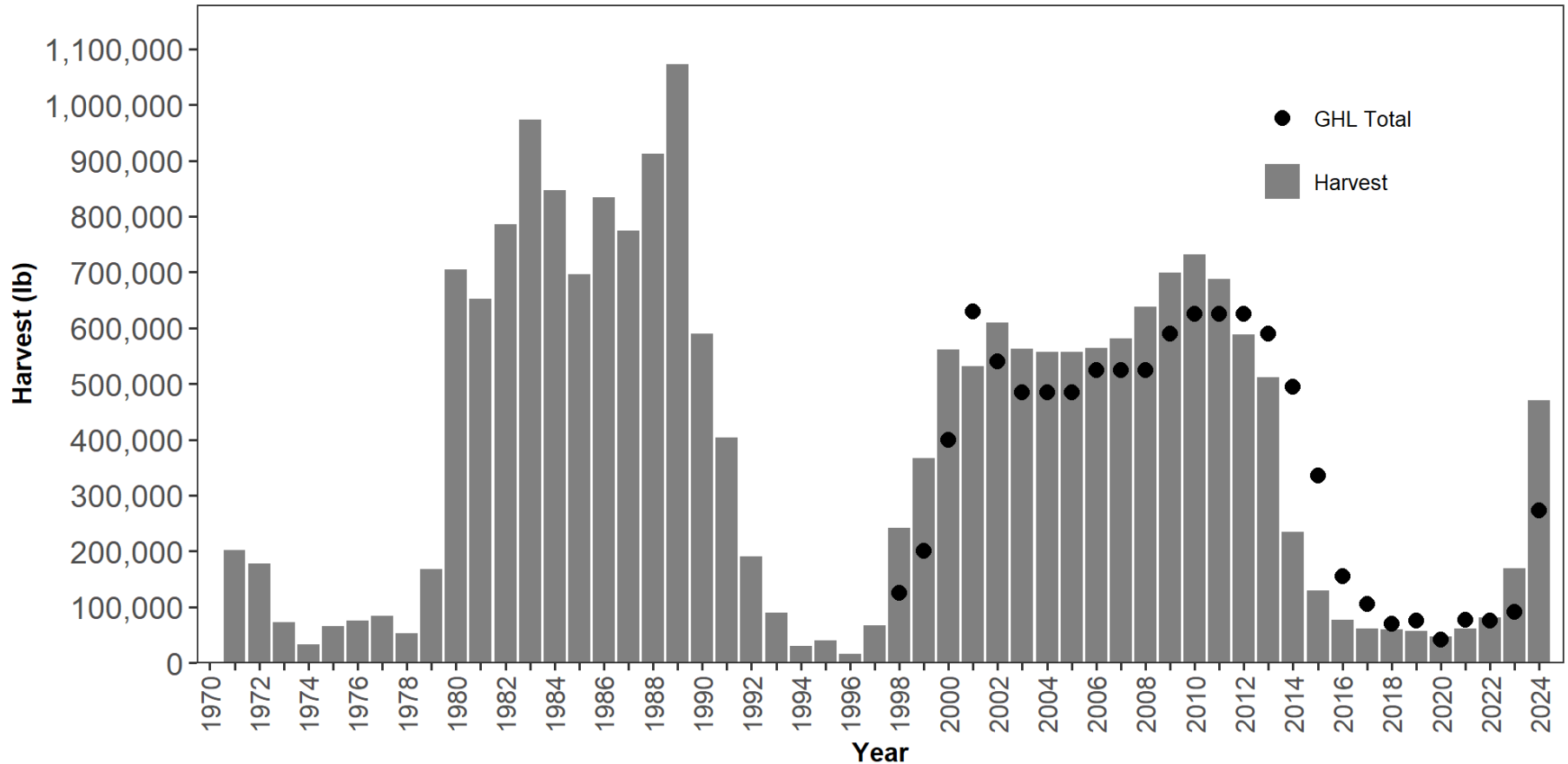
King Crab Personal Use

- Regional (Outside 11-A)
 - 2018-permits required
 - Individual bag limits
 - RKC/BKC Season: July 1st – March 31st
 - Bag limits and open areas based on annual survey results
 - Bag limits range from 1-3 crab/person/day
 - If the regionwide harvestable surplus is above 200K lb - bag limit is 3 crab/person/day

GKC Assessment & Management



GKC Assessment & Management



Southeast Region Commercial and PU King Crab Oral Report RC 3, Tab 15



GKC Assessment & Management



- Assessment
 - No fishery-independent assessment
- Management Overview
 - Limited entry (47 permits)
 - 7 management areas
 - Males only, 7-inch minimum CW, season mid-February–December 1
 - 80 pots per vessel
 - Logbooks and daily call-ins required

GKC Assessment & Management



SE GKC Management Plan: 5 AAC 34.114

- Area respective GHs within a Guideline Harvest Range (GHR)
- GHs set using catch per unit of effort (CPUE), harvest, and biological information collected dockside
- GKC Harvest Strategy (2020–present) utilizes fishery dependent information to evaluate stock health and measure fishery performance using transparent and repeatable metrics to guide management decisions
- Adheres to *“Policy on King and Tanner Crab Resource Management”*



GKC Assessment & Management



Proposal 233: change the GKC fishery start date criteria

Proposal 234: change GKC fishery start time from 12:00 noon to 8:00 am

Proposal 235: add freezing spray to the weather criteria to delay the GKC fishery

Proposal 236: increase depth for stored gear prior to the fishery from 10 to 20 fa

Proposal 237: expand the Lower Chatham Strait Area

Proposal 238: expand the Southern Area

Proposal 239: split Northern Area into two areas and guideline harvest range

Proposal 240: allow Tanner/GKC fishery participants to have Tanner crab onboard while in a closed area and continue to fish for GKC

Proposal 241: allow vessels participating in the GKC fishery to operate groundfish coil spring pots (slinky pots) for bait

Questions?

