

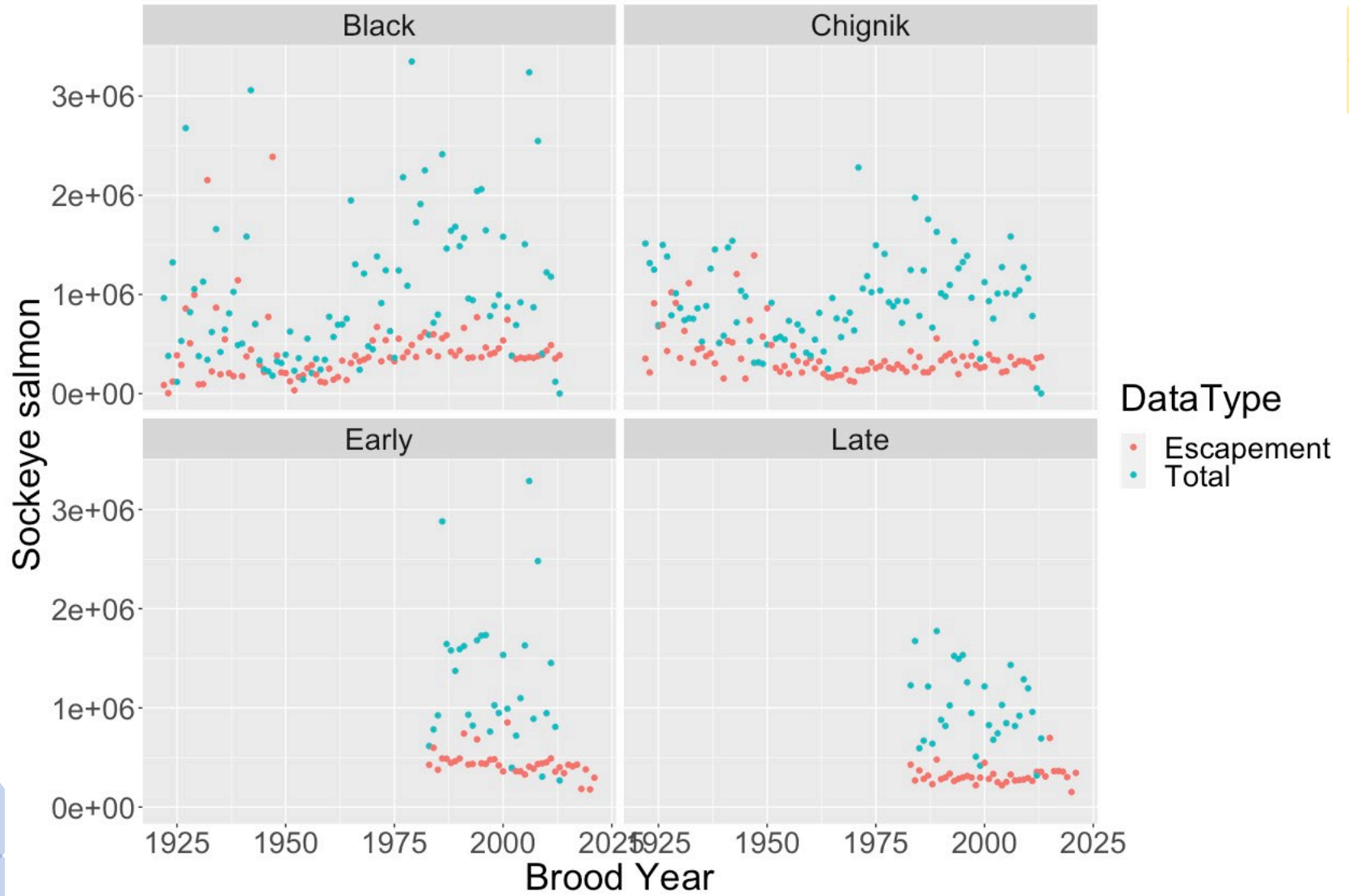
Comments on Optimal escapement and harvest rates for Chignik sockeye stocks

Proposal 282

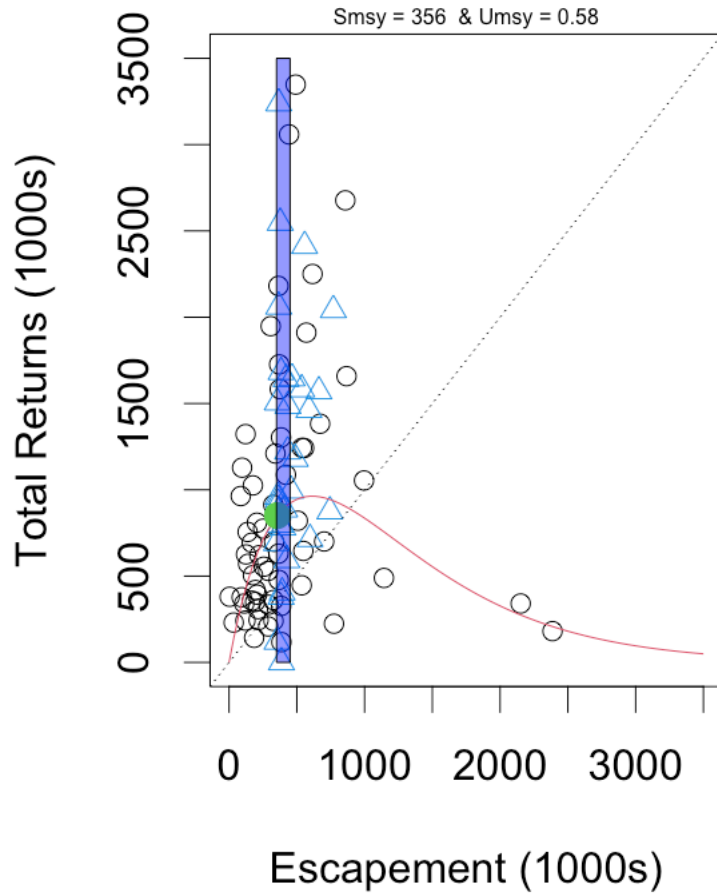
Steve Martell
Sea State Inc.

Optimal escapement and harvest rates for Chignik sockeye stocks

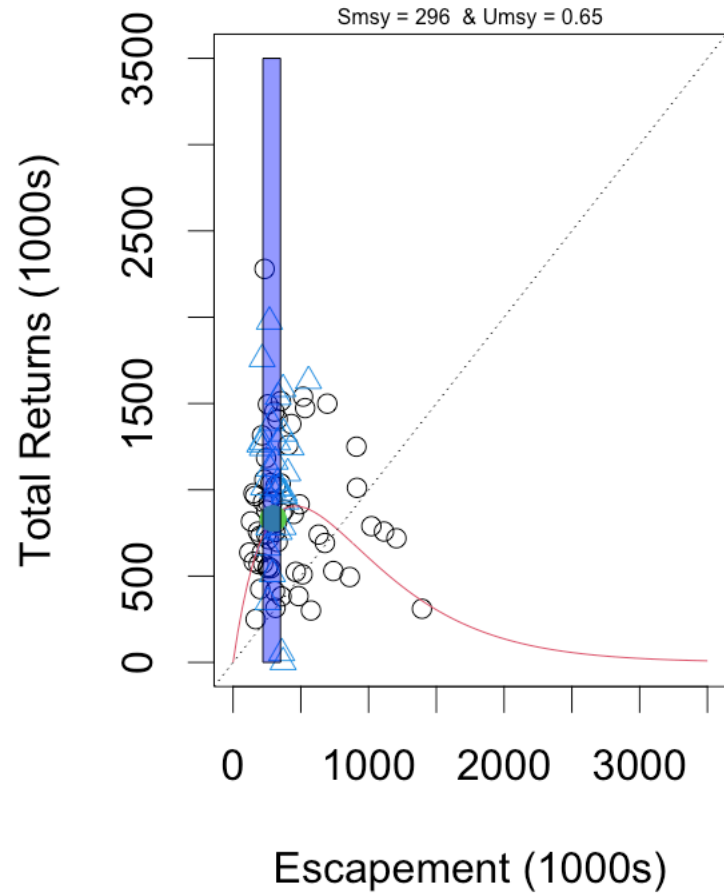
- How Data Inform Fixed-Escapement policies
- Optimum escapement estimates
- Utility of a fixed escapement policy.



Black Lake

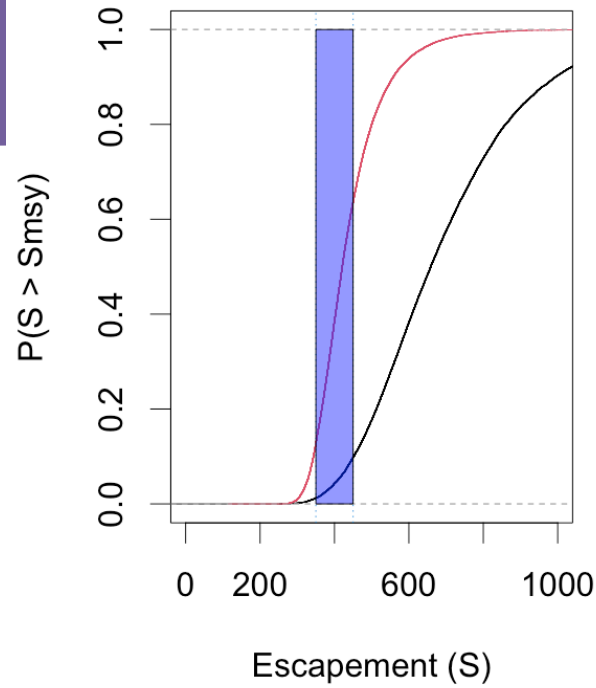


Chignik Lake

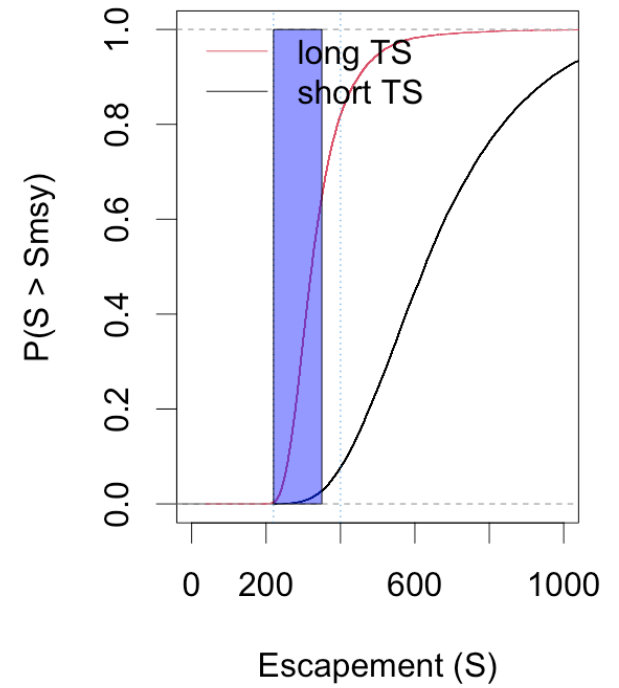


Optimum escapement

Black Lake



Chignik Lake



Summary

- Data are more informative about optimum exploitation rates and less informative about optimum escapement.
- A fixed harvest-rate policy would allow fisheries to continue to operate during periods of low escapement.