

ADF&G STAFF ORAL PRESENTATION ALASKA BOARD OF FISHERIES

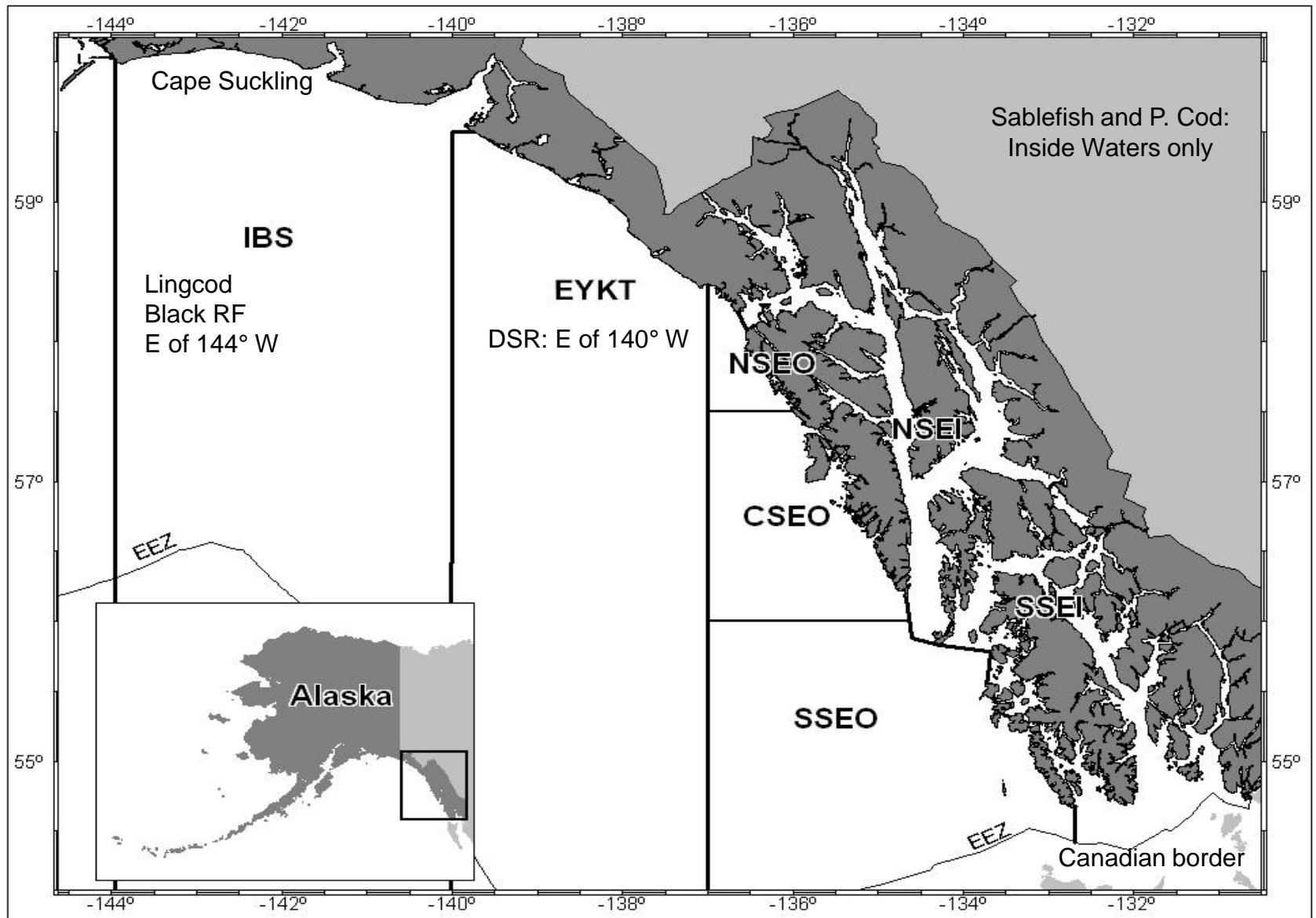
SOUTHEAST ALASKA AND YAKUTAT AREAS
FINFISH REGULATORY PROPOSALS
January 15th–23rd, 2018 Sitka, Alaska



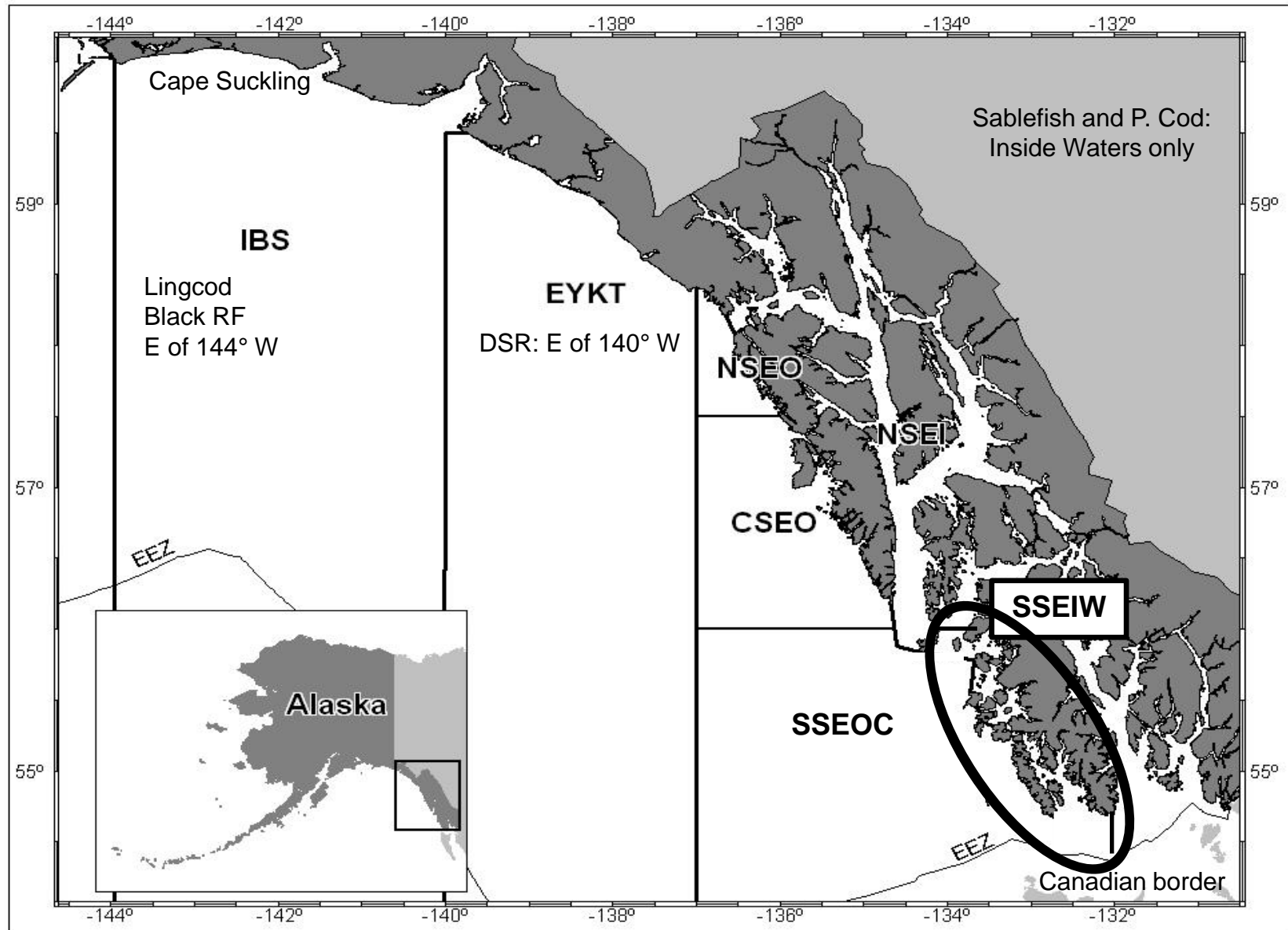
Commercial Groundfish Fisheries

Andrew P. Olson, Groundfish Project Leader
Division of Commercial Fisheries
Alaska Department of Fish and Game, Southeast Region

Groundfish Management Areas



Lingcod and Black Rockfish Management Areas



Lingcod Management

- **Assessment**

- No fishery-independent assessment

- **Management plan**

- Guideline Harvest Range (currently managed to upper end)
- Lingcod Management Plan (adopted in 2000)
- Quota allocation between users in each area
- User groups include: directed, salmon troll bycatch, longline bycatch, jig bycatch, and sport

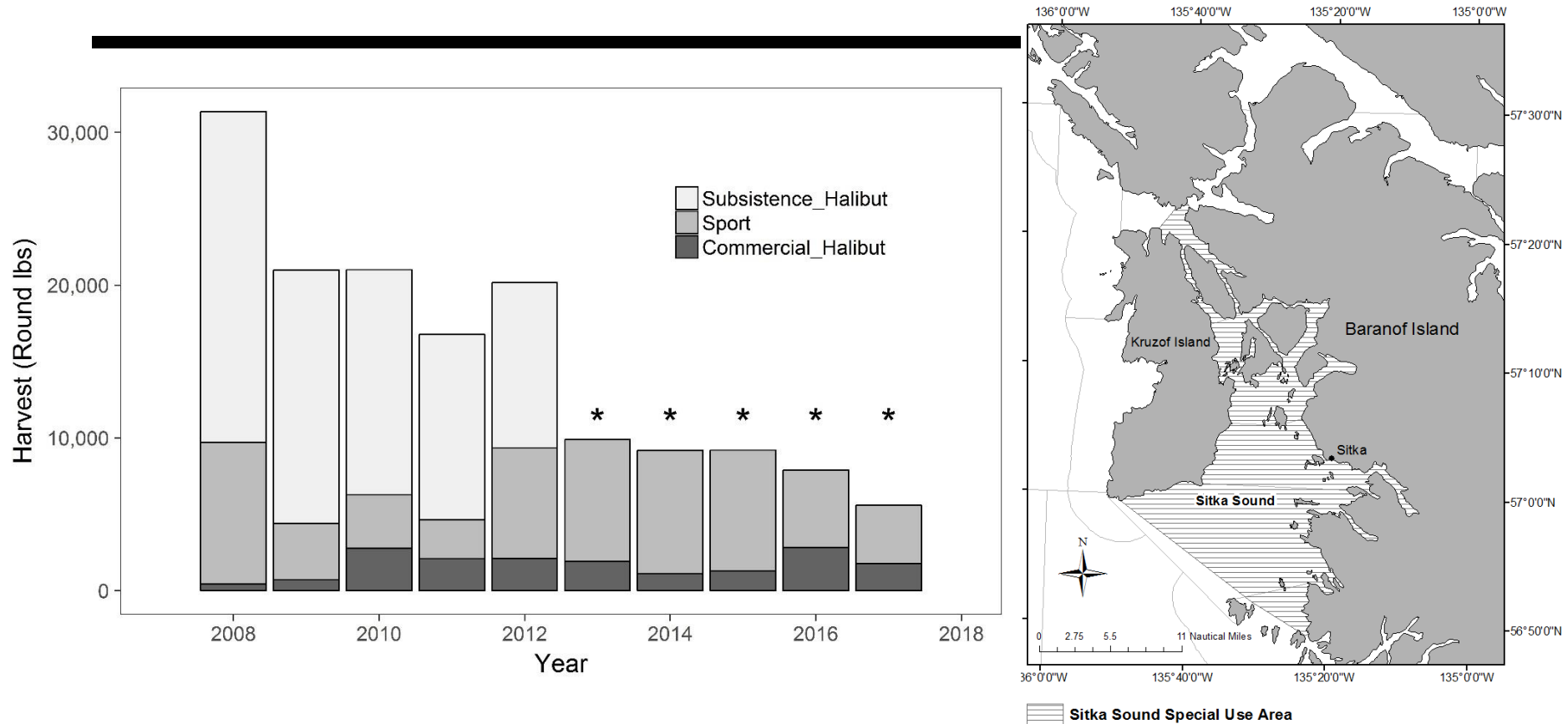
- **Regulations**

- Season closed Dec. 1–May 15 to protect nest-guarding males
- Registration/logbooks required for directed fishery
- Legal directed fishery gear: dinglebar, hand troll, and mechanical jig
- Legal size: 27 in. from snout to tail or 20.5 in. from front of dorsal fin to the tip of the tail.

Proposal 123: seeks to increase the minimum size limit from snout to tail to 30 in. or 22.75 in. from front of dorsal fin to tail.



Sitka Special Use Area Lingcod Harvest



*Subsistence halibut lingcod data not available for 2013–2017

Proposal 124: sale of lingcod bycatch in commercial salmon troll fishery



NSEI Sablefish Management

● Assessment

- Mark-recapture study to estimate abundance (assumes closed population, tagging occurs before fishery)
- Longline surveys to collect CPUE/ biological data
- Fishery CPUE/biological data

● Management plan

- ABC from applying harvest rate to mark-recapture biomass
- $F_{50\%}$ harvest rate in 2017
- Commercial directed quota set after deducting estimated sablefish mortality from ABC; divided among 78 permit holders in 2017

● Regulations

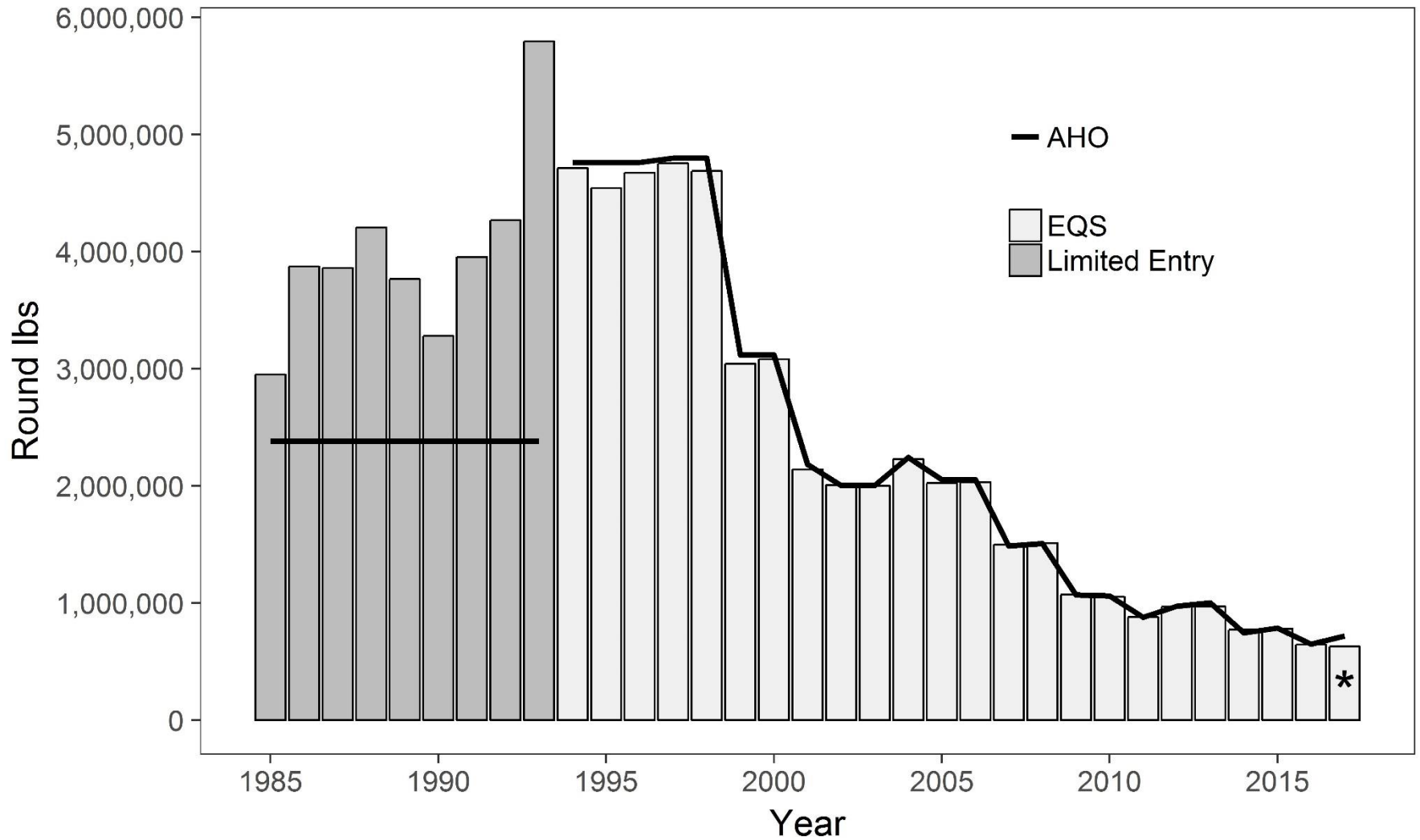
- Registration and logbooks
- Longline legal gear only
- August 15–November 15 season



Proposal 118: modify season dates



NSEI Sablefish Harvest History



*Commercial harvest through October, 2017



SSEI Sablefish Management



- **Assessment**

- Longline surveys to collect CPUE/biological data
- Fishery CPUE/biological data

- **Management plan**

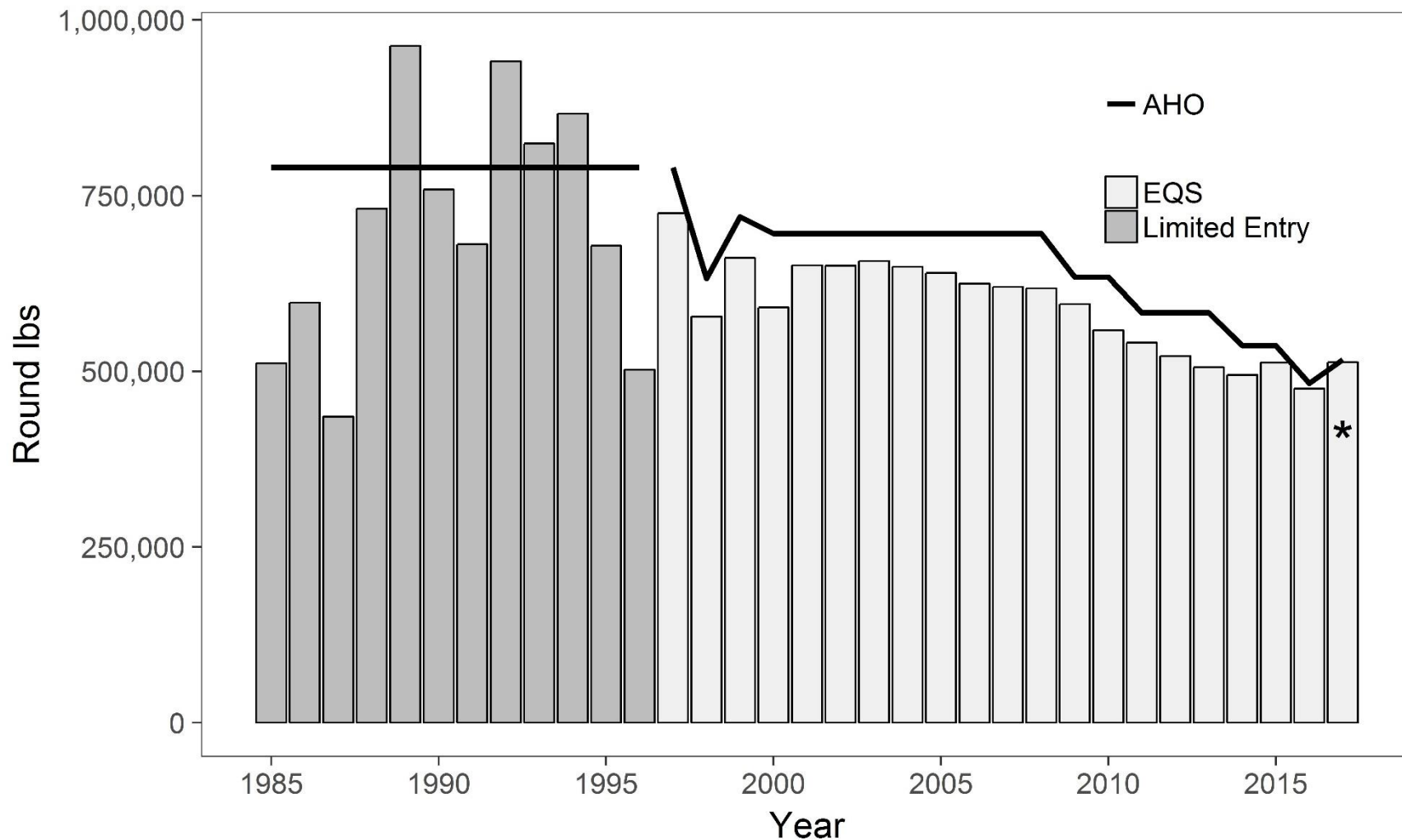
- Commercial directed quota set after reviewing survey and fishery CPUE and biological data
- Quota divided among 23 permit holders in 2017

- **Regulations**

- Registration and logbooks required
- Longline and pot are legal gear with different season
- CFEC regulations modified in 2017 to allow longline permits to be used with either longline or pot gear

Proposals 119, 120, 121: modify season dates/combine gear seasons

SSEI Sablefish Harvest History



*Commercial harvest through October, 2017



Demersal Shelf Rockfish Management

- **Assessment**

- 7 Species: yelloweye, quillback, China, rosethorn, canary, copper, and tiger
- Outside: EYKT, NSEO, CSEO, & SSEO
 - Joint state/federal management of DSR
 - Biomass is based on a habitat-based approach
 - Harvest rate X biomass = ABC
- Inside: NSEI & SSEI
 - No fishery-independent assessment



Demersal Shelf Rockfish Management

- **Management plan**

- Outside

- Estimated subsistence harvest deducted from ABC; remainder allocated 84% to commercial users, 16% to sport
- Commercial directed fishery may be opened after bycatch from halibut fishery is estimated

- Inside:

- Guideline Harvest Levels
- Winter season is open January 5th–start of halibut IFQ or until 67% of GHL is reached
- Fall season is open post halibut IFQ season –December 31 or until GHL is reached.

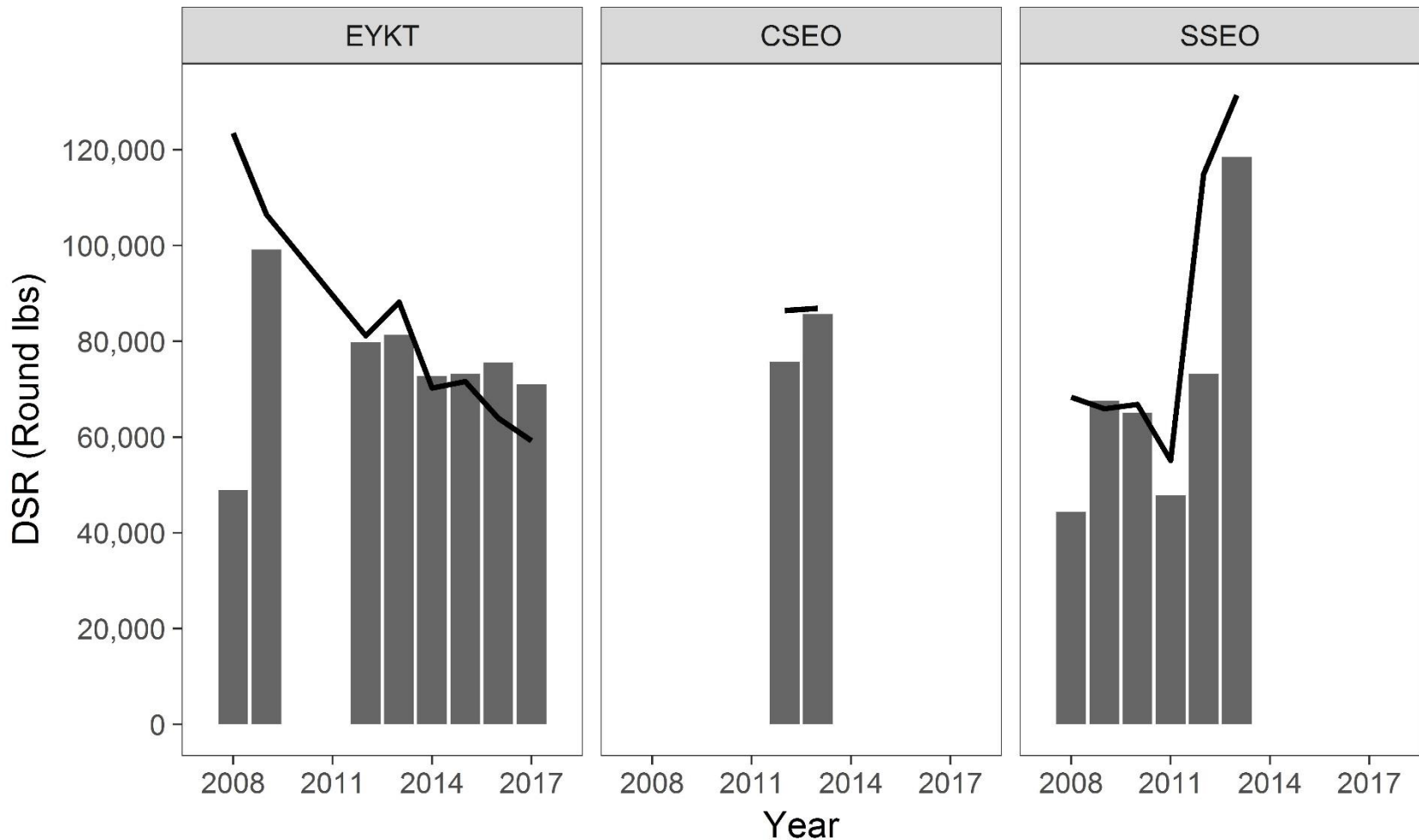
- **Regulations**

- Registration and logbooks
- Full retention of DSR in comm. groundfish and halibut fisheries

Proposal 129: trip limit reduction and clarification



Demersal Shelf Rockfish Directed Harvest



NSEO directed fishery has been closed since 1995

Thank you/Questions

