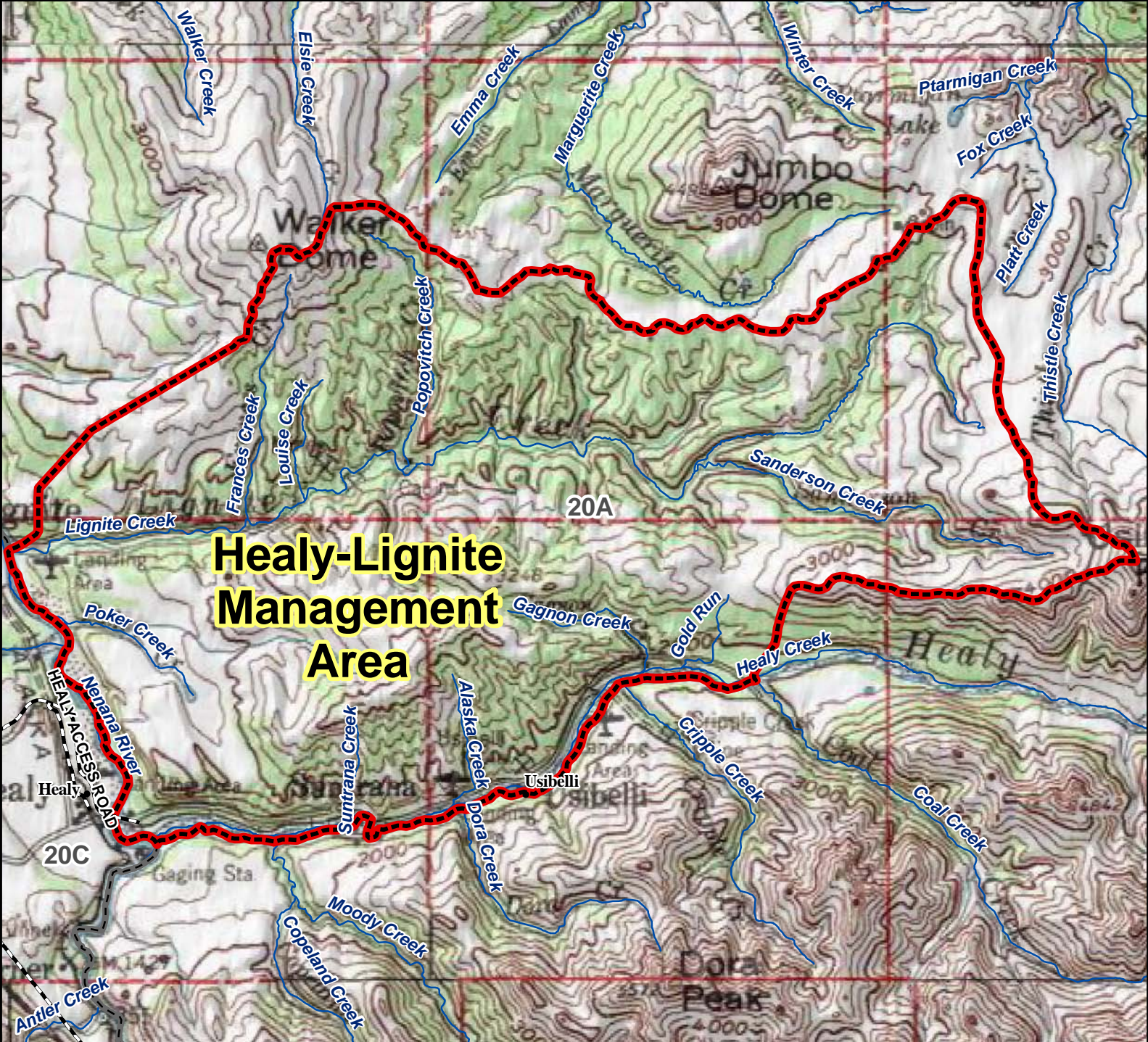


Unit 20A Healy-Lignite Management Area



Healy-Lignite Management Area

AREA DESCRIPTION: Unit 20A, the area consists of that portion of Unit 20A that includes the entire Lignite Creek drainage, and that portion of the Nenana River drainage south of the Lignite Creek drainage and north of a boundary beginning at the confluence of the Nenana River and Healy Creek, then easterly along the south bank of Healy Creek to its confluence with Coal Creek, then northeasterly to the headwaters of Sanderson Creek at Usibelli Peak.

The area is open to hunting by bow and arrow only.

N

- Management Area
- Subunit Boundary
- Closed Area
- Controlled Use Area
- National Park/Monument
- National Wildlife Refuge
- Military Closure
- Other State Areas
- Closed to Hunting