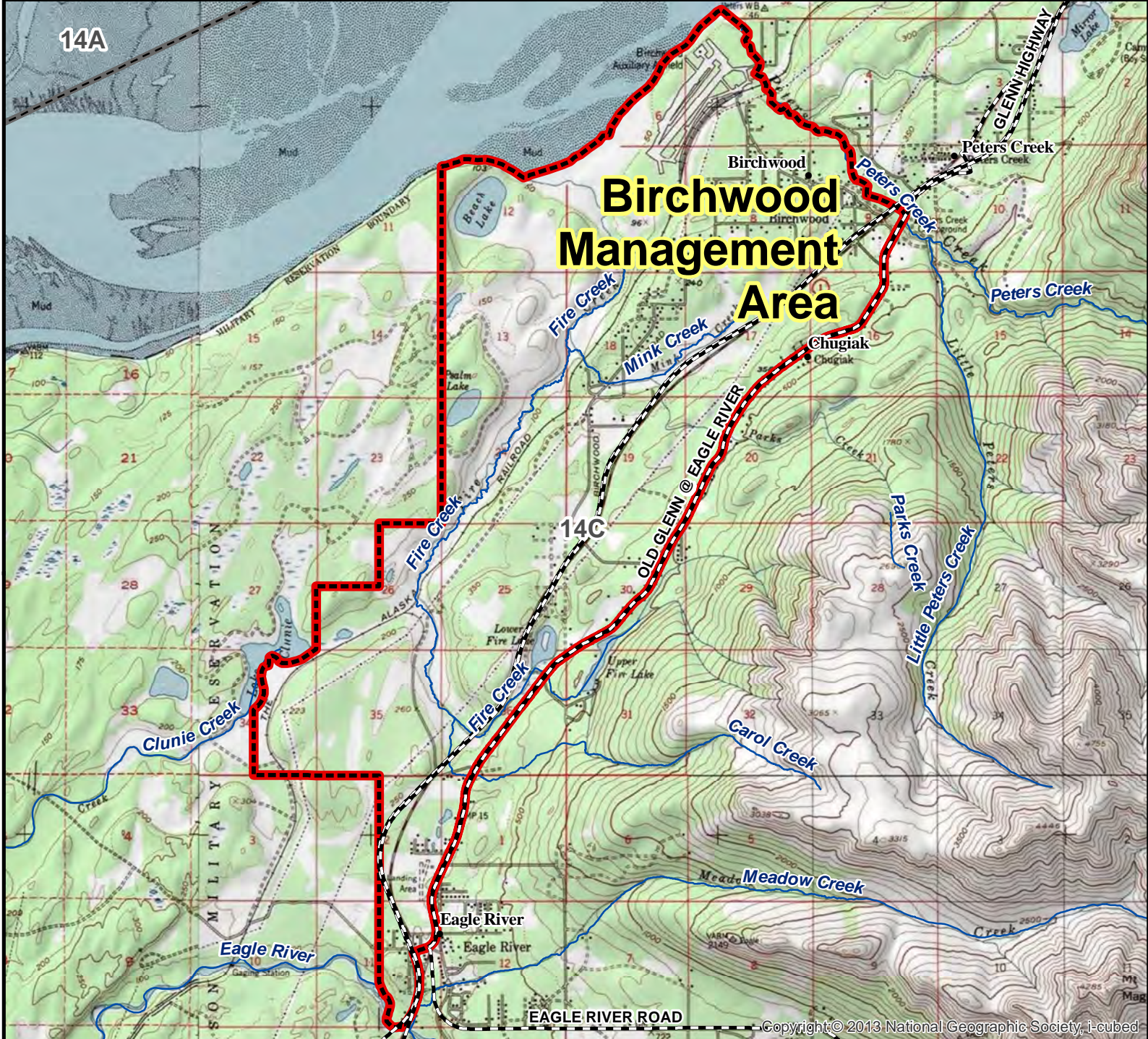


Unit 14C Birchwood Management Area



AREA DESCRIPTION: Unit 14C, the area consists of all land bounded on the south and west by Eagle River and the Joint Base Elmendorf-Richardson (JBER) Military Reservation, on the east by the old Glen Highway, and on the north by Peters Creek.

Closed to hunting, except that (i) small game may be taken by air rifle with rifled barrel, shotgun, falconry, crossbow, and bow and arrow only, north and west of the Alaska Railroad; (ii) moose hunting is allowed by drawing permit, by bow and arrow only; (iii) deleterious exotic wildlife may be taken by air rifle with rifled barrel, bow and arrow (with blunts or other special small-game points), and falconry only

Copyright © 2013 National Geographic Society, i-cubed

N
0 0.5 1 2 Miles

- Management Area
- Subunit Boundary
- Closed Area
- Controlled Use Area
- National Park/Monument
- National Wildlife Refuge
- Military Closure
- Other State Areas
- Closed to Hunting