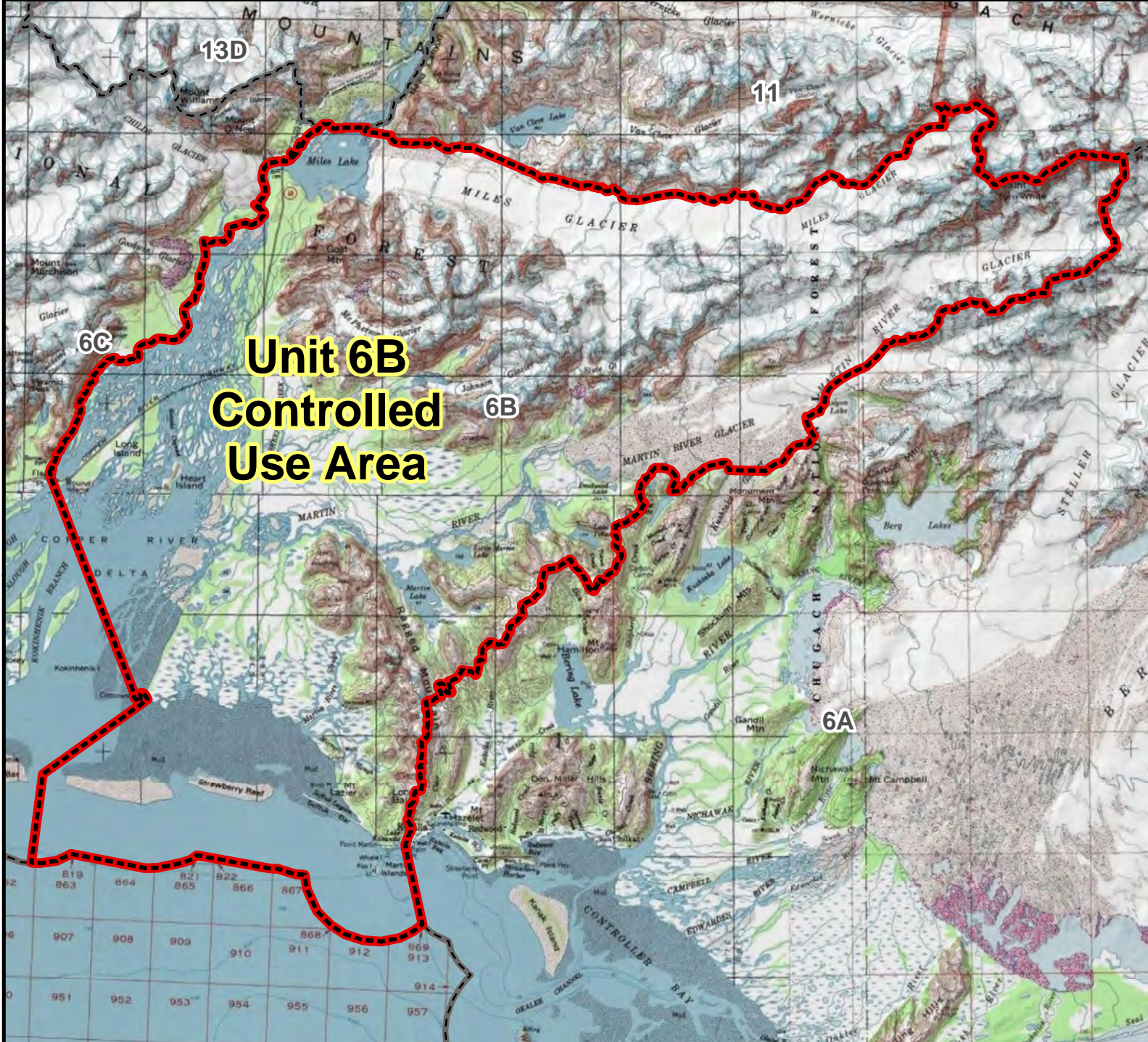


# Unit 6B Unit 6B Controlled Use Area

This map is intended for hunt planning use, not for determining legal property or regulatory boundaries. Content is compiled from various sources and is subject to change without notice. See current hunting regulations for written descriptions of boundaries. Hunters are responsible for knowing the land ownership and regulations of the areas they intend to hunt.



## AREA DESCRIPTION: Unit 6B.

The area is closed to the use of any motorized vehicle for moose hunting, including the transportation of moose hunters, or moose hunting gear, from August 25 - September 4, with the exception of vehicles on the Copper River Highway, Carbon Mountain Road, the Clear Creek boat launch, and boats crossing at mile 36 bridge which can be conducted in a substantially straight line and no more than 1/4 mile above or below the bridge. Moose may not be taken until after 3:00 a.m. on the day following the day which any motorized vehicle, except vehicles on the Copper River Highway, Carbon Mountain Road, the Clear Creek boat launch, and boats crossing at mile 36 bridge which can be conducted in a substantially straight line and no more than 1/4 mile above or below the bridge, is used for transportation, from September 5 through October 31

