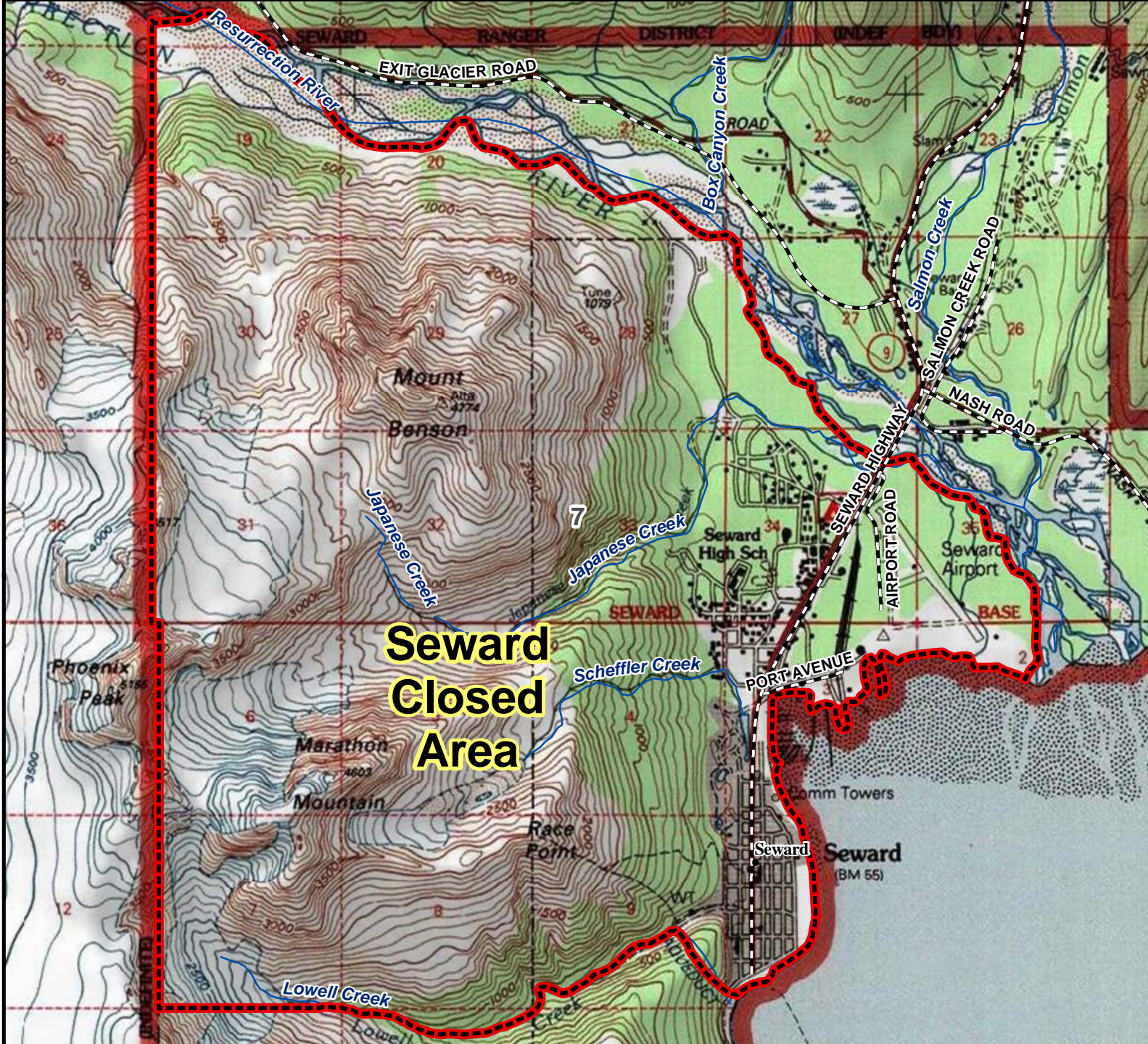


Unit 7 Seward Closed Area



AREA DESCRIPTION: Unit 7, the Seward Closed Area, which consists of the south side drainage of the Resurrection River downstream from the Kenai Fjords National Park's eastern boundary, and Resurrection Bay drainages between the mouth of the Resurrection River and the mouth of Lowell Creek.

The area is closed to the taking of big game, except black bear.

0 0.325 0.65 1.3 Miles

- Closed Area
- Subunit Boundary
- Controlled Use Area
- Management Area
- National Park/Monument
- National Wildlife Refuge
- Military Closure
- Other State Areas
- Closed to Hunting

