



## **Advisory Announcement**

*For Immediate Release:*  
February 18, 2025

## **CONTACT:**

Martin Schuster, Area Management Biologist  
Andy Pollak, Asst. Area Management Biologist  
(907) 235-8191

### **2025 Prince William Sound Area Commercial Shrimp Pot Fishery Closed** **Emergency Order # 2-SF-E-01-25**

The Prince William Sound Area (PWS) commercial shrimp pot fishing season will not open in 2025. ADF&G conducts an annual shrimp pot survey in PWS (Figure 1). Survey results, along with harvest from the commercial and noncommercial fisheries, are used in a model to determine the annual total allowable harvest (TAH) of shrimp. This TAH must exceed 110,000 pounds for a commercial fishery to be opened, and in 2025 TAH is below the 110,000 pound threshold to open a commercial fishery.

Survey results indicate that the abundance of spot shrimp in PWS has been decreasing since 2020 (Figure 2). This trend is apparent in each of the three management areas (Figure 3). There was a slight increase in spot shrimp catch per unit effort in Areas 1 and 2 during the most recent shrimp pot survey in October of 2024. However, the cumulative effect of multiple years of declining abundance resulted in a TAH lower than in 2024 when the commercial fishery last opened.

Multiple proposals affecting commercial and noncommercial shrimp pot fisheries in PWS will be deliberated by the Alaska Board of Fisheries at the statewide shellfish meeting in Anchorage, which takes place March 11 to March 16. The submission deadline for public comments is February 25, 2025. Information on submitting public comments can be found at <https://www.adfg.alaska.gov/index.cfm?adfg=fisheriesboard.meetinginfo>.

For additional information, contact ADF&G in Homer, at 907-235-8191.

-end-

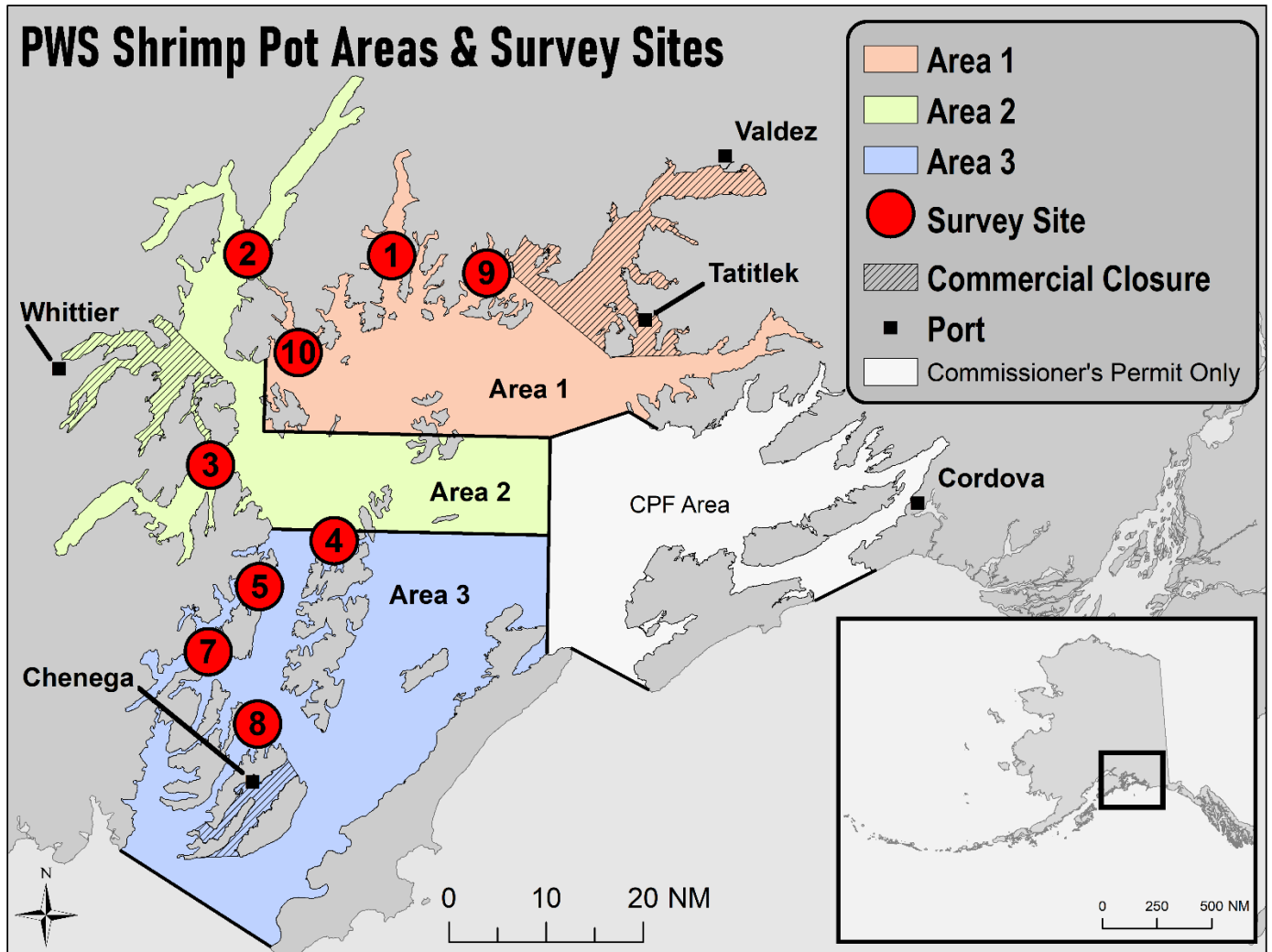


Figure 1.-Prince William Sound Area Shrimp Pot Survey sites and commercial management areas.

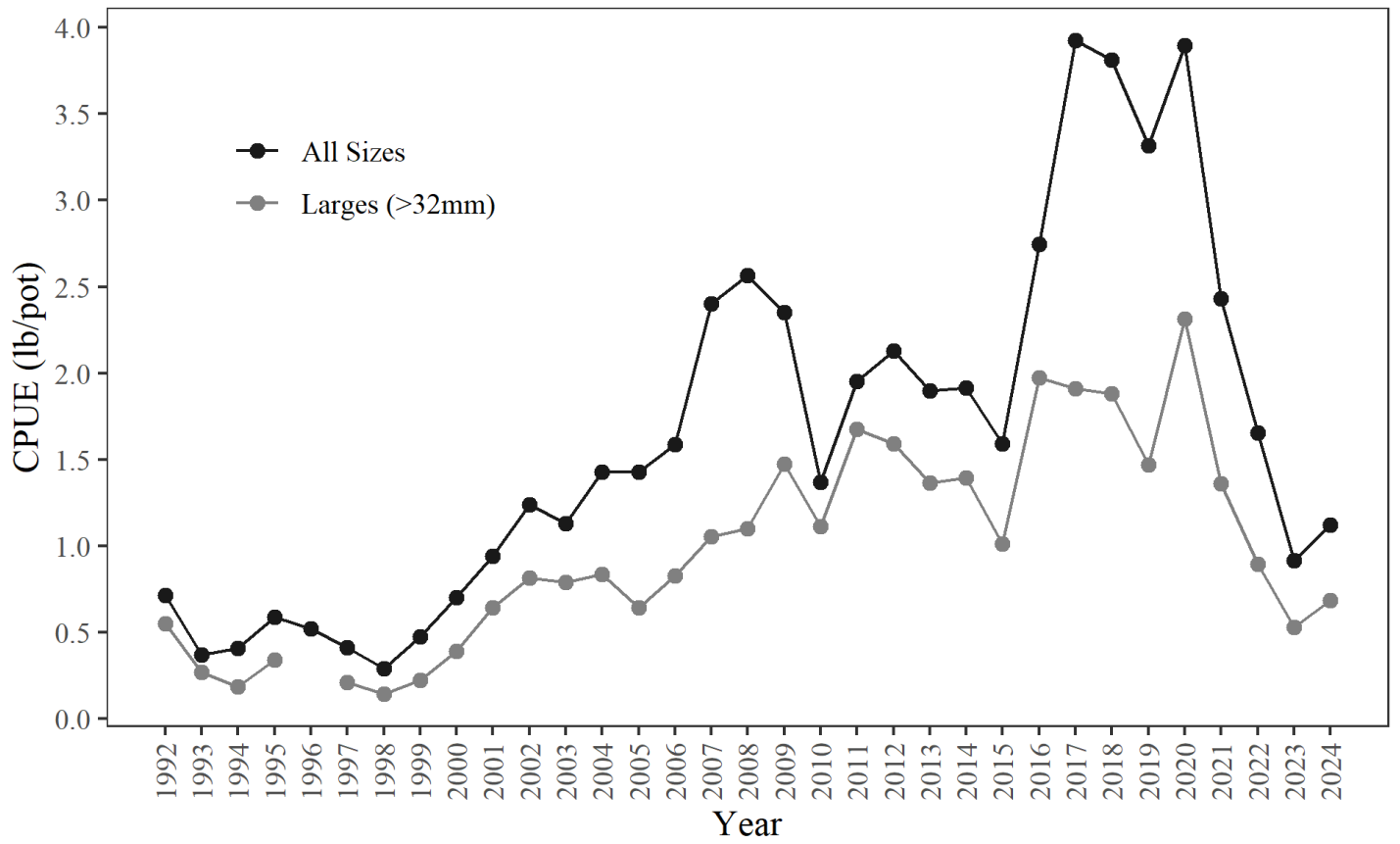


Figure 2.-Prince William Sound Area Shrimp Pot Survey catch per unit effort (CPUE) in pounds per pot for all commercial management areas combined, 1992-2024.

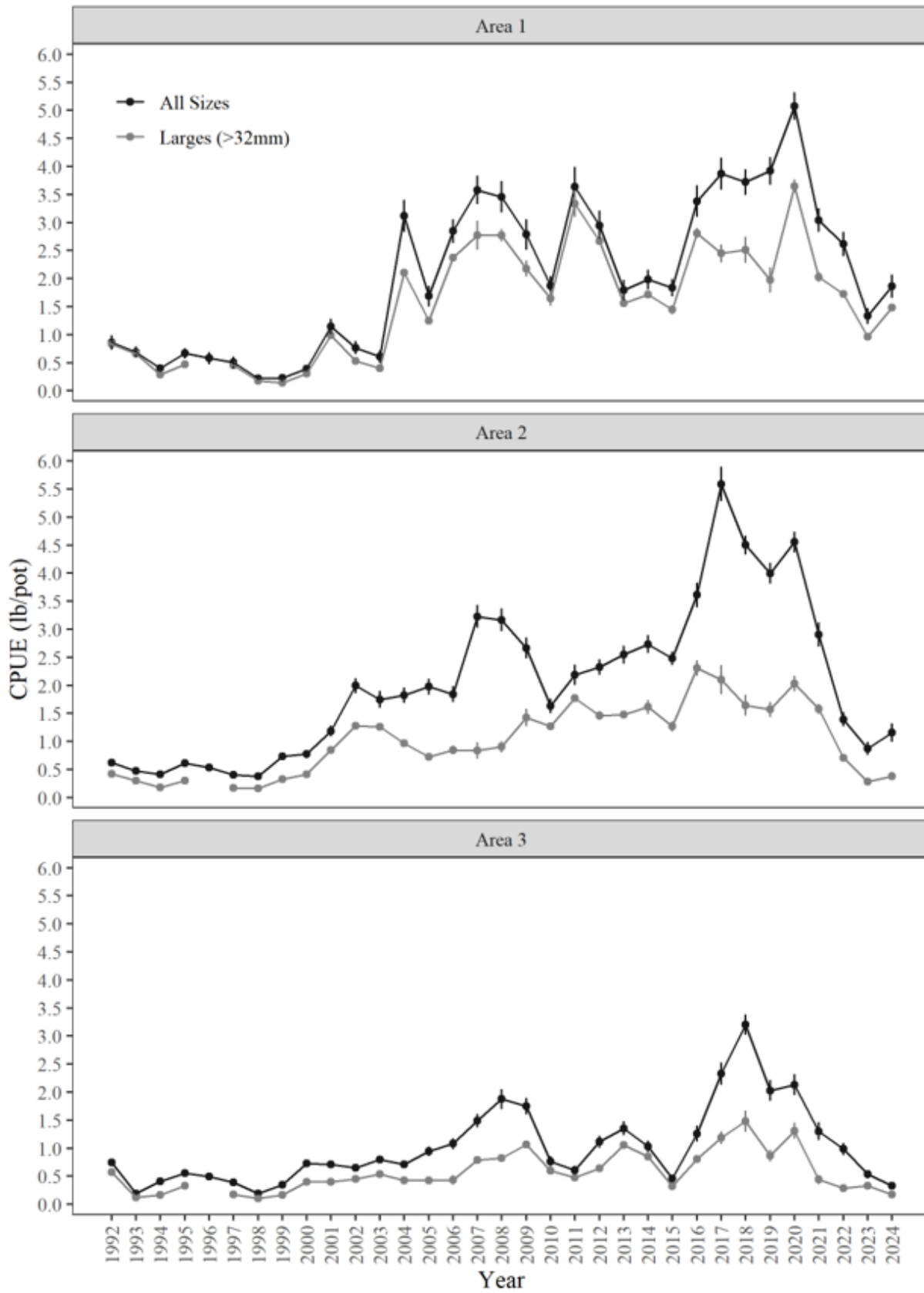


Figure 3.-Prince William Sound Area Shrimp Pot Survey catch per unit effort (CPUE) in pounds per pot by commercial management area, 1992-2024.