



Advisory Announcement

For Immediate Release: July 18, 2024

CONTACT: Heather Scannell and Jeremy Botz

**Finfish Area Management Biologist
(907) 424-3212**

Prince William Sound Salmon Fishery Announcement #25

This announcement corrects the coordinates for the southern boundary in the Eastern District.

SEINE FISHERIES: VFDA is expected to complete cost recovery today, July 18, and has recommended a fishing period targeting SGH pink salmon. Pink salmon cost recovery harvest from yesterday, July 17, resulted in an average weight of 3.25 pounds per fish and 52% female. Future fishing opportunities will be dependent on wild stock escapement indices and VFDA broodstock recruitment.

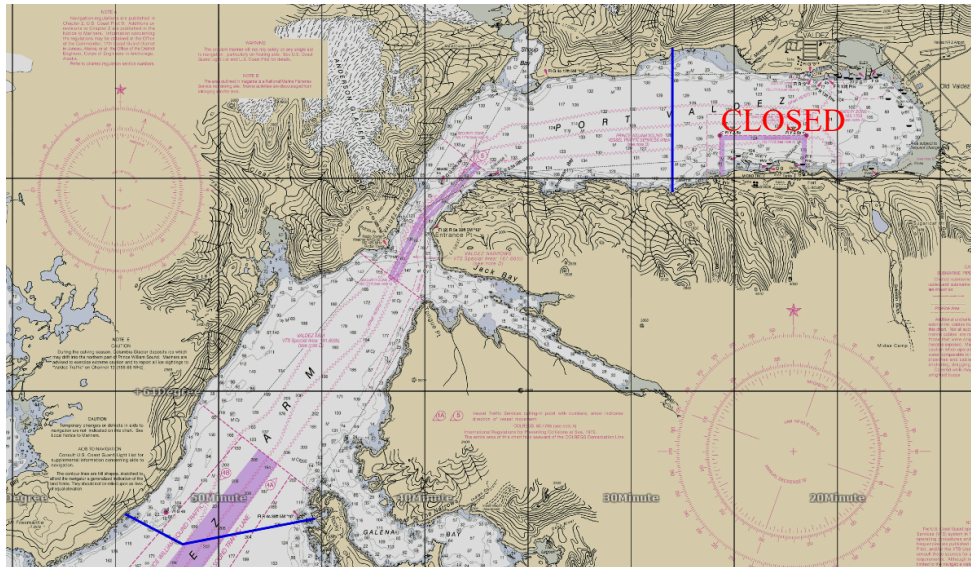
An aerial survey of the Coghill, Northwestern, and Eshamy Districts was conducted yesterday, July 17, and an aerial survey of the Montague District was conducted today, July 18. Wild stocks are beginning to show up in all districts surveyed; however, stream escapement is minimal, which is expected for this date. A survey of the Southeastern and Southwestern Districts is scheduled for tomorrow, July 19. The next rotation of wild stock aerial surveys will begin early next week.

EASTERN DISTRICT: Waters in the Eastern District, north of a line from **60°57.11' N. lat., 146°54.52' W. long. to 60°56.40' N. lat., 146°51.75' W. long. to 60°57.00' N. lat., 146°45.35' W. long** will open to commercial purse seine fishing for a 12-hour period, from 7:00 am until 7:00 pm on Friday, July 19. **The waters of Port Valdez east of the longitude of 146° 28.00'W will be CLOSED to commercial fishing during this period.** Regulatory closed waters and anadromous stream closures north of a line from Potato Point to Entrance Point will not be in effect during this fishing period.

Waters inside the following Eastern District Salmon Harvest Task Force (SHTF) markers will be closed to commercial fishing during this period to ensure early season escapement:

- (1) **Galena Bay:** waters east of a line from a shore marker at approximately 60°56.87' N. lat., 146°39.87' W. long. to a shore marker at approximately 60°56.55' N. lat., 146°39.65' W. long.;
- (2) **Jack Bay:** waters south and east of a line from a shore marker at approximately 61°02.34' N. lat., 146°35.27' W. long. to a shore marker at approximately 61°02.17' N. lat., 146°39.77' W. long.;
- (3) **Sawmill Bay:** north of a line from a marker on shore at approximately 61°02.71' N. lat., 146°46.44' W. long. to a shore marker at approximately 61°02.58' N. lat., 146°47.07' W. long.;

Preliminary otolith contribution estimates from the fishing period on Tuesday, July 16, were 89% SGH and 11% wild.



The next scheduled salmon fisheries announcement is anticipated to be at 2:00 pm Saturday, July 20.

Announcement recordings are available for gillnet fisheries at 907-424-7535 and seine fisheries at 907-424-7345. In addition, announcement recordings are available in Anchorage at 907-267-2843.