

Division of Commercial Fisheries
Sam Rabung, Director

Region I, Petersburg Area Office
PO Box 667
Petersburg, AK 99833



Alaska Department of Fish and Game
Doug Vincent-Lang, Commissioner

PO Box 115526
Juneau, AK 99811-5526
www.adfg.alaska.gov

Advisory Announcement
For Immediate Release: February 20, 2024

CONTACT: Troy Thynes
Region I Management Coordinator
troy.thynes@alaska.gov
(907) 772-3801

2024 SOUTHEAST ALASKA EULACHON SMELT FISHERY ANNOUNCEMENT

The following describes open and closed areas and fisheries for eulachon smelt (*Thaleichthys pacificus*) for the 2024 season. These closures will be in effect beginning 12:01 a.m., March 1, 2024:

District 1: will be closed to commercial, personal use, and subsistence eulachon smelt fishing in all waters. This includes all Revillagigedo Island and mainland drainages;

District 7: will be closed to commercial, personal use, and subsistence eulachon smelt fishing in all waters;

District 8: will be closed to commercial eulachon fishing. **Subsistence and personal use fishing for eulachon smelt will remain open.**

Eulachon smelt spawning runs in the southern portions of Southeast Alaska have had large fluctuations over the last 20 years and continue to show poor to moderate runs to many systems with traditional runs of eulachon smelt. Stock status information for each of the above areas is limited and a conservative approach is necessary for sustaining and rebuilding the health of these stocks. The United States Forest Service (USFS) will have a limited Federal Subsistence eulachon fishery for federally qualified users only in the waters of the Unuk River. All other Federal public waters that flow into District 1 will be closed to all users. Residents of Ketchikan and Juneau are not considered federally qualified users.

The Alaska Department of Fish and Game (ADF&G) will communicate with USFS personnel on the grounds and monitor eulachon runs to the Unuk River and other District 1 systems as funding and staff time allow. If the observed abundance of eulachon is at a level that could provide for additional harvest, the ADF&G may provide opportunity for a limited state subsistence fishery.

The Emergency Order corresponding with this announcement is EO 1H0124.

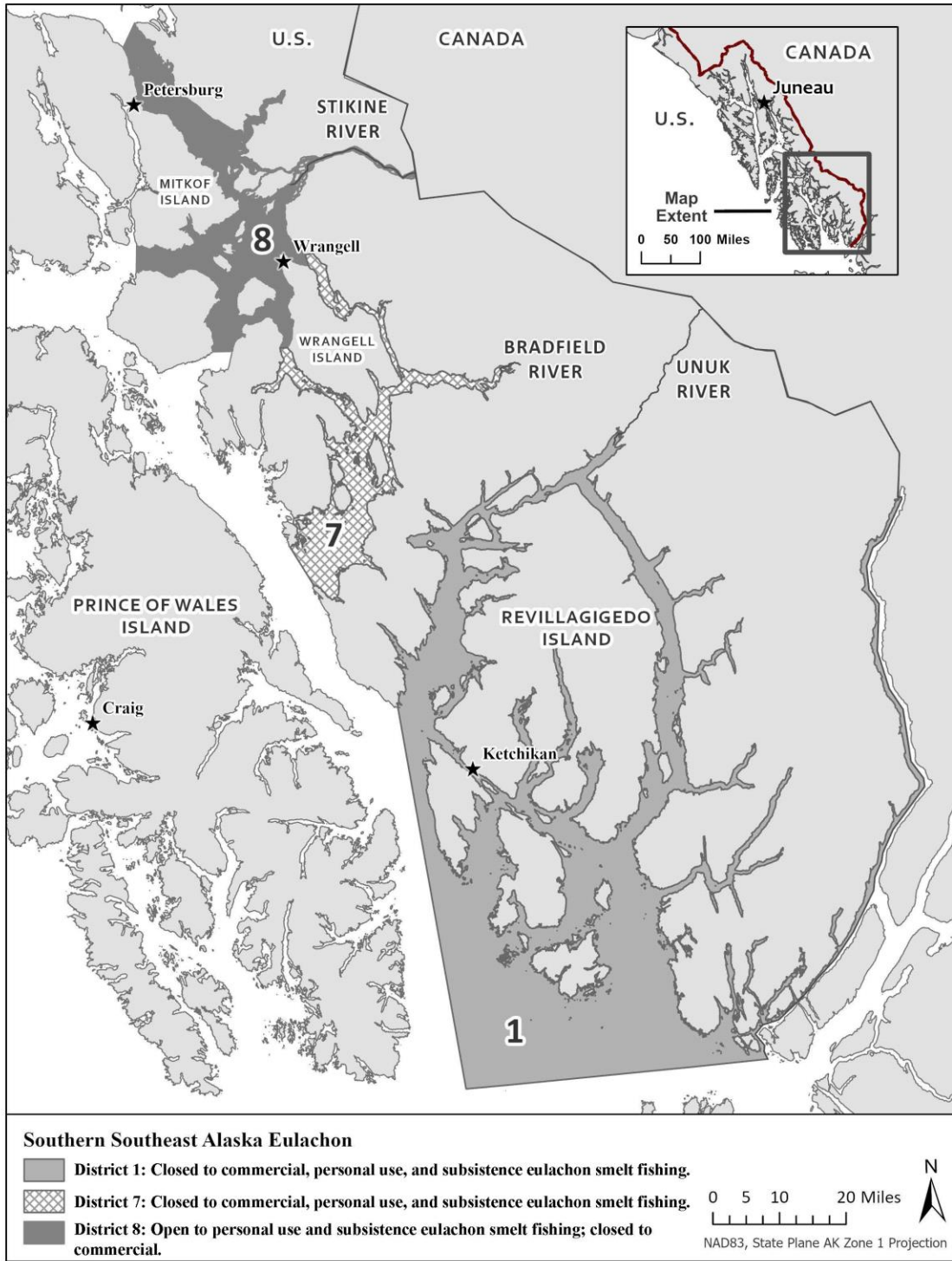


Figure 1. Map of southern Southeast Alaska eulachon fisheries.

Advisory Announcement web site: <http://www.adfg.alaska.gov/index.cfm?adfg=cfnews.main>.

Office	Ketchikan	Petersburg	Wrangell	Sitka	Juneau	Haines	Yakutat
ADF&G	225-5195	772-3801		747-6688	465-4250	766-2830	784-3255
AWT	225-5111	7723983	874-3215	747-3254	465-4000	766-2533	784-3220