



Advisory Announcement
For Immediate Release: June 3, 2022

CONTACT: Grant Hagerman
Region 1 Commercial Troll Management Biologist
grant.hagerman@alaska.gov
(907) 747-6688

SOUTHEAST ALASKA/YAKUTAT SPRING TROLL FISHERY

The Alaska Department of Fish and Game (ADF&G) announces the following information concerning the 2022 commercial spring troll fishery.

SCHEDULE OF SPRING TROLL OPENINGS

Ketchikan area

Mountain Point (101-45) June 8–10
Rock Point (101-46) June 8–10

Craig area

Bucareli Bay (103-50) *June 6–7

***Modified Boundary:** beginning June 6, the Bucareli Bay spring troll fishery is defined as the waters of Ursua Channel and Bucareli, Trocadero, and San Alberto Bays south of a line from Point Polocano at 55°32.37' N lat, 133°17.38' W long, to the northernmost tip of Abbess Island at 55°33.78' N lat, 133°10.81' W long, to a point on Peratrovich Island at 55°35.19' N lat, 133°07.09' W long, to Cemetery Point at 55°33.82' N lat, 133°06.36' W long, to the northernmost tip of Klawock Island at 55°33.42' N lat, 133°06.39' W long, south and west of a line from Cape Suspiro at 55°27.48' N lat, 133°08.54' W long, **to the northernmost tip of Toti Island at 55°24.90' N lat, 133°07.34' W long, to Point Miraballes at 55° 25.86' N lat., 133° 05.23' W long,** and northeast of a line from Point Amargura at 55°27.00' N lat, 133°21.65' W long to 55°24.67' N lat, 133°21.18' W long, to Point Providence at 55°21.51' N lat, 133°16.23' W long (Figure 1).

Port Saint Nicholas THA (103-63) *June 1–July 31

***New Area:** the Port Saint Nicholas spring troll fishery closed for the 2022 season on May 31, however, as specified in the troll advisory announcement May 25, the Port Saint Nicholas THA will remain open continuously to troll gear June 1–July 31, unless closed by emergency order, in the waters of Port Saint Nicholas and Bucareli Bay north and east of a line from Cape Suspiro at 55° 27.48' N lat., 133° 08.54' W long., to the northernmost tip of Toti Island at 55° 24.90' N lat., 133° 07.34' W long., **to Point Miraballes at 55° 25.86' N lat., 133° 05.23' W long.** The waters of the Port Saint Nicholas Special Harvest Area (SHA) east of 133° 02.92' W long are closed to common property fisheries (Figure 1). **Fisherman are advised that the longitude for Point Miraballes has been updated from the coordinate specified in the Port Saint Nicholas THA advisory announcement issued on May 25, 2022.**

Sitka area

Western Channel (113-01) June 6
Redoubt Bay (113-30) June 8–10
Goddard (113-31) June 7–8
West Crawfish Inlet (113-32) June 6–7
Sitka Sound (113-41) June 4–10
Salisbury Sound (113-62) June 8–10

Yakutat area

Yakutat Bay (183-10) June 6

Weekly troll openings will be announced by advisory announcement each Friday. Spring troll fishery openings begin at 12:01 a.m. and close at 11:59 p.m. The Northern Chatham Strait, Point Couverden, Homeshore, Cross Sound, South Passage, and Keku Strait hatchery chum salmon areas will open on June 15: Chinook salmon retention is prohibited. Maps of spring troll and terminal harvest areas (THA) and additional details on the fishery are provided in the 2022 Spring Troll Fishery Management Plan, available in area offices and on the ADF&G troll web site at:

https://www.adfg.alaska.gov/index.cfm?adfg=commercialbyareasoutheast.salmon_trollspring.

Fishing time in an area may be extended based on inseason assessment of coded wire tag data and historic harvest timing information. **It is extremely important to segregate fish caught in different fishery areas so that accurate dockside sampling can occur by department personnel.** If salmon are harvested in multiple areas, each troller and tender is required to report these catches on **separate fish tickets** (5 AAC 29.090[k]). The fishery name and the fishery statistical area number must be reported on all fish tickets.

THA troll openings will occur as follows, unless closed by emergency order. Opening and closing times vary by area, refer to the appropriate THA advisory announcements for fishery details. Chinook salmon retention is prohibited during the month of June in the Southeast Cove and Thomas Bay THAs.

Carroll Inlet THA (101-48)	June 1–30
Neets Bay THA (101-95)	June 15–July 6
Port Saint Nicholas THA (103-63)	June 1–July 31
Anita Bay THA (107-35)	June 1–July 6; September 1–November 10
Gunnuk Creek THA (109-40)	June 1–30
Southeast Cove THA (109-41)	June 20–August 1
Thomas Bay THA (110-12)	June 19–August 6
Hidden Falls THA (112-22)	June 1–September 20
Crawfish Inlet THA (113-33)	June 1–September 20
Silver Bay THA (113-35)	June 1–July 30
Deep Inlet THA (113-38)	June 1– September 20

2022 Spring Chinook Harvest and Effort				
Spring Troll Area	<i>Week of 5/29 (SW 23)</i>		<i>Cumulative</i>	
	Landings	Harvest	Landings	Harvest
Nakat Inlet THA (101-10)	0	0	0	0
Carroll Inlet THA (101-48)	*	*	*	*
Bucareli Bay (103-50)	22	213	74	706
Port Saint Nicholas (103-60)	13	55	45	202
Port Saint Nicholas THA (103-63)	4	10	4	10
Anita Bay THA (107-35)	0	0	0	0
Hidden Falls THA (112-22)	*	*	*	*
Western Channel (113-01)	5	15	5	15
Redoubt Bay (113-30)	*	*	43	504
Goddard (113-31)	3	10	3	10
West Crawfish Inlet (113-32)	3	33	3	33
Crawfish Inlet THA (113-33)	*	*	*	*
Silver Bay THA (113-35)	0	0	0	0
Deep Inlet THA (113-38)	0	0	0	0
Sitka Sound (113-41)	35	502	122	1,339
Salisbury Sound (113-62)	3	33	28	308
Yakutat Bay (183-10)	9	65	37	210
Totals for Region	102	985	368	3,360

*Data are confidential when harvest for fewer than 3 permits is reported

The Emergency Orders corresponding with this announcement are 1S0422 and 1S1022.

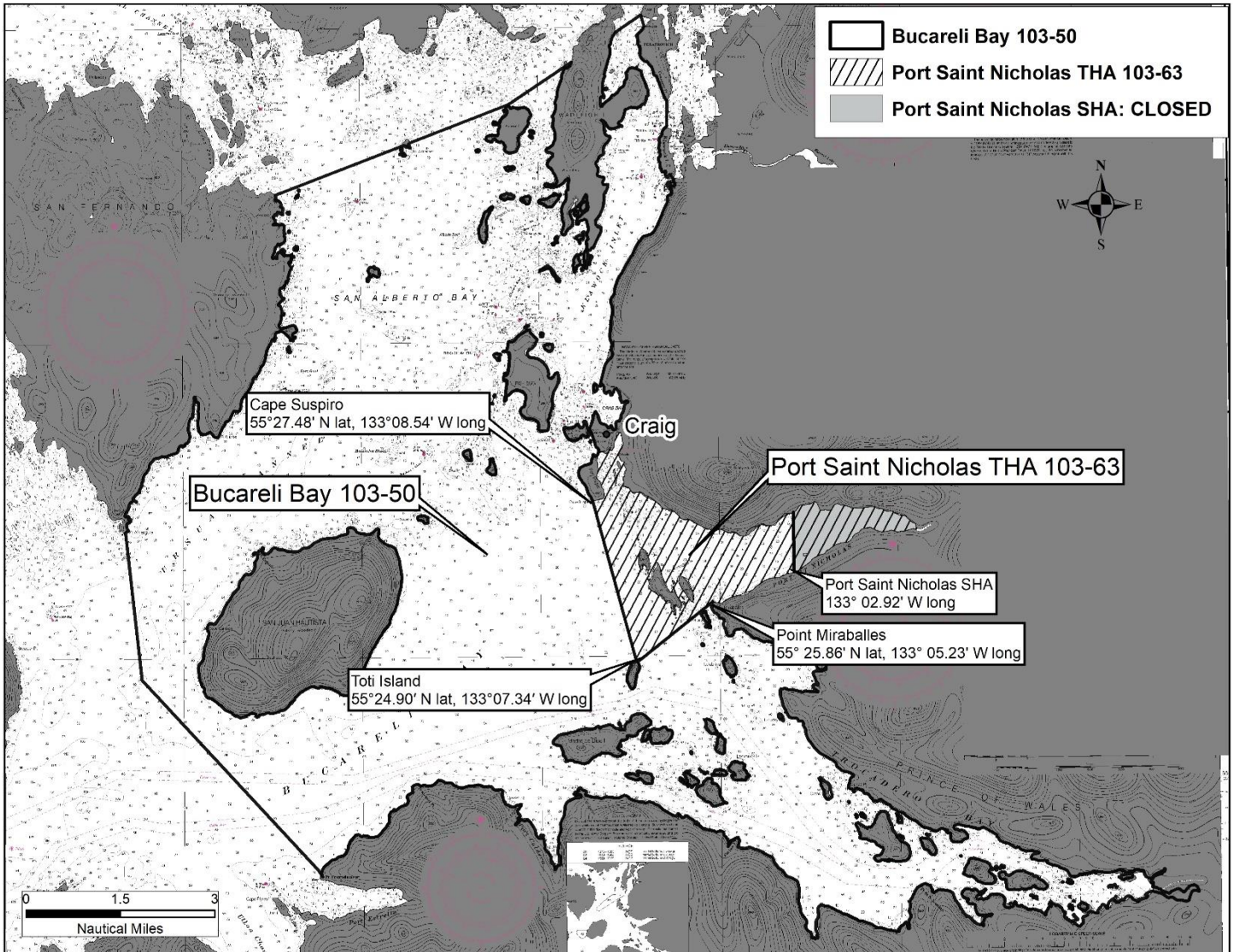


Figure 1.—Modified boundary line for the Bucareli Bay spring troll area and the new Port Saint Nicholas Terminal Harvest Area.

Advisory Announcement web site: <http://www.adfg.alaska.gov/index.cfm?adfg=cfnews.main>.

Office	Ketchikan	Petersburg	Sitka	Juneau	Haines	Hoonah	Yakutat
ADF&G	225-5195	772-3801	747-6688	465-4250	766-2830		784-3255
AWT	225-5111	772-3983	747-3254	465-4000		945-3620	
Troll Hotline	225-6870		747-8765	465-8765			