



## Advisory Announcement

## CONTACT:

**Deena Jallen, Area Management Biologist**  
**907-459-7309**

**Released: April 20, 2022**

**Toll free fishing schedule and counts: 866-479-7387**

**In Fairbanks fishing schedule hotline: 907-459-7387**

### 2022 Yukon River Salmon Summer Fishery Announcement #1

#### Yukon River Salmon Fisheries Outlook

Districts Affected: Yukon Area

Alaska Department of Fish and Game (ADF&G) research and management staff have worked closely with United States Fish and Wildlife Service (USFWS) staff to develop this year’s management strategy. Feedback has been sought from stakeholders, agency staff and leadership, and this strategy has been discussed in depth at the Yukon River Drainage Fishermen’s Association (YRDFA) Board meeting and public preseason fishermen’s meeting, and at the Yukon River Panel April meeting.

The drainagewide Chinook salmon outlook is for a run size of 99,000 to 150,000 fish, and the Canadian-origin Chinook salmon run size outlook is for a run of 41,000 to 62,000 fish. Therefore the 2022 run is likely to be similar to 2021. Because of the poor projected run size, salmon fishing closures are required until inseason run strength estimates indicate a harvestable surplus above escapement needs. This will likely require closures at least through the midpoint of the run.

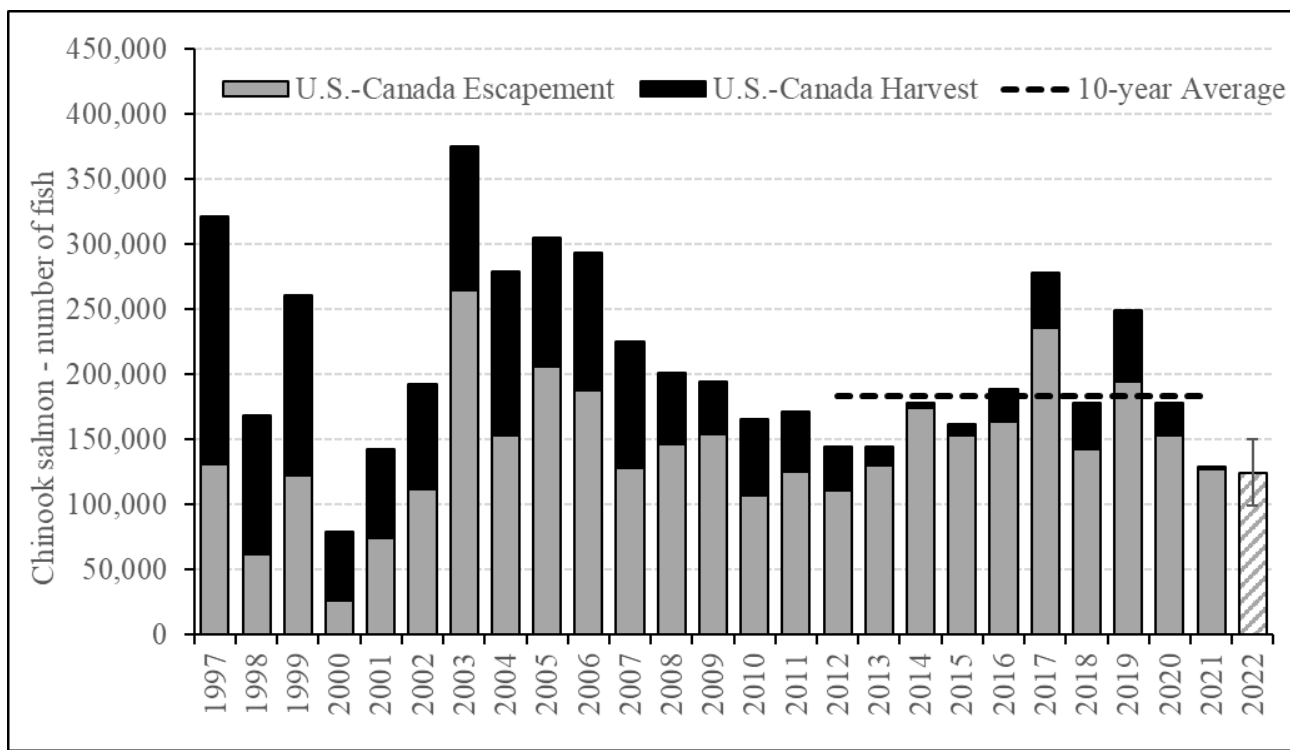


Chart 1. Total Chinook salmon run size uses sonar passage estimates and estimated harvests. The dashed line is the recent 10-year average run size of ~183,000 Chinook salmon. The 2022 striped bar represents the approximate midpoint of the drainagewide outlook range.

Summer and fall chum salmon runs in 2021 were the lowest on record. Despite very restricted fishing, no escapement goals were met in 2021. The outlooks for 2022 are below the drainagewide escapement goal levels and fishing closures are necessary to ensure chum salmon reach spawning streams.

The drainagewide summer chum salmon outlook is for a run size of 333,000 fish, with a range of 162,000 to 542,000 fish as shown in Chart 2 below.

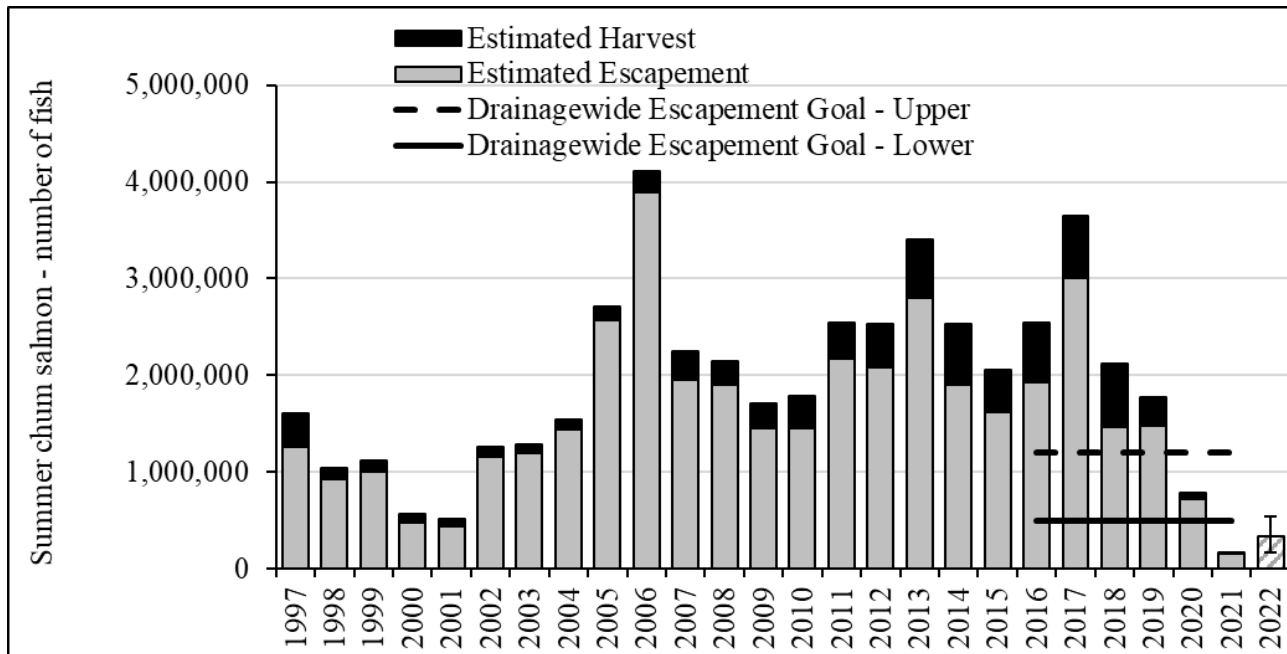


Chart 2. Summer chum salmon total run with drainagewide escapement goal ranges shown in the solid and dashed black lines. The 2022 striped bar represents the approximate midpoint of the outlook range.

The drainagewide fall chum salmon outlook is for a run size of 110,000 fish, with a range of 78,100 to 148,000 fish (Chart 3 below). The fall chum salmon projection will be revised in mid-July based on the 2022 summer chum salmon run size.

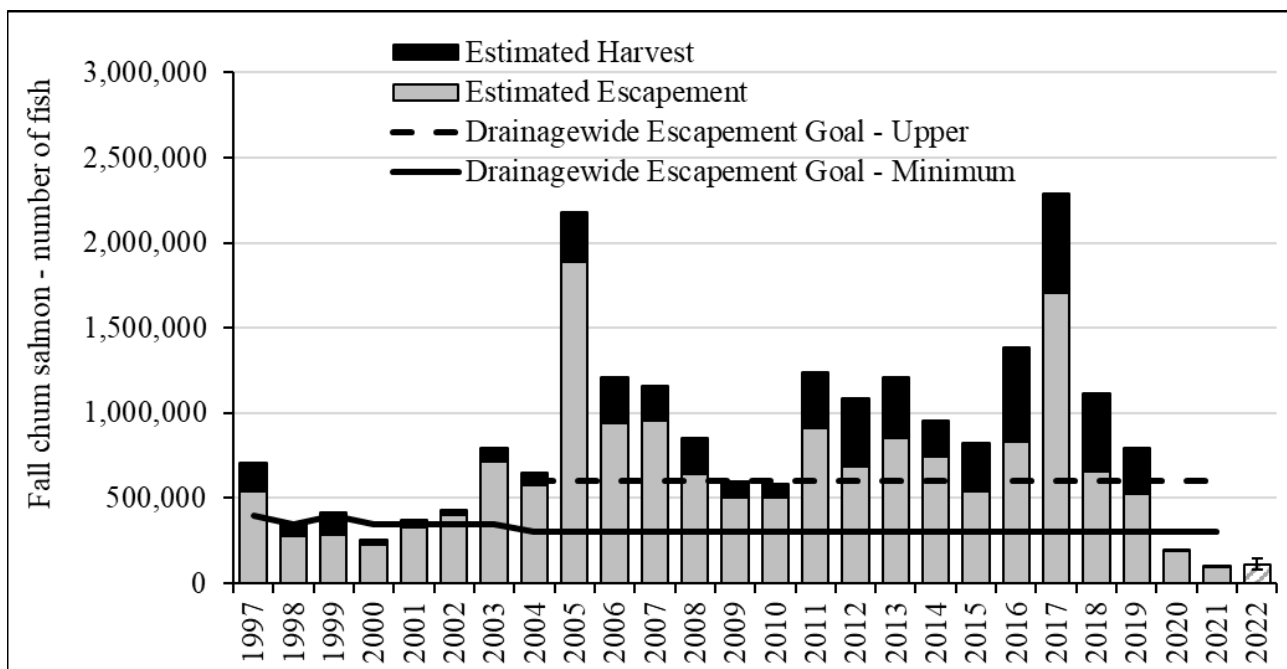


Chart 3 (previous page). Fall chum salmon total run with drainagewide escapement goal ranges shown in the solid and dashed black lines. The 2022 striped bar represents the approximate midpoint of the outlook range.

**2022 Run and Harvest Outlook for Yukon River Salmon**

	<b>Chinook</b>	<b>Summer Chum</b>	<b>Fall Chum*</b>	<b>Coho</b>
<b>Outlook:</b>	Poor	Poor	Poor	Below average
<b>Escapement:</b>	Some potential to meet goals	Unlikely to meet goals	Unlikely to meet goals	Unlikely to meet goals
<b>Subsistence:</b>	Fishing Closures and Restrictions	Fishing Closures and Restrictions	Fishing Closures and Restrictions	Fishing Closures and Restrictions
<b>Commercial:</b>	None expected	None expected	None expected	None expected

\* Fall chum salmon projection will be revised in mid-July based on summer chum salmon run size.

**Management Strategies based on the preseason outlooks and inseason assessment:**

- Starting on June 2 in District 1 and the Coastal District, subsistence salmon fishing will close. Closures in upriver districts will be announced based on salmon travel time.
- These closures may be weeks long until the midpoint of the Chinook salmon run is assessed at Pilot Station sonar (likely around June 23). If inseason assessment indicates runs closer to the lower end of the outlooks, subsistence fishing for salmon will remain closed.
- The sport fishery for Chinook salmon will begin the season closed throughout the U.S. portion of the Yukon River drainage, excluding the Tanana River drainage. Chinook salmon may not be retained or possessed. Management actions for the Tanana River drainage will be announced in early June.
- If confidence is high that the summer chum salmon run is near the upper end of the outlook, and the drainagewide escapement goal is likely to be met, subsistence fishing opportunities with selective gear (dip nets, beach seines, and manned fish wheels) may be allowed.
- Pink and sockeye salmon may be targeted by hook and line gear in waters from the coast up to and including the Nulato River, and in other areas of the drainage where subsistence fishing with hook and line gear is allowed.
- Fishing for nonsalmon species with 4-inch or smaller mesh gill nets will be allowed during salmon fishing closures; however, net length will be reduced to a maximum of 60 feet at the start of the season. If there are indications that Chinook and chum salmon are being targeted with this gear, this gear may be discontinued.
- Other nonsalmon gear types, including hook and line, longline, jigging gear, hand line, beach seine, fyke net, spear, or lead may be used to fish for nonsalmon species all year, even during salmon fishing closures. Chinook and chum salmon should be avoided and released alive if incidentally caught.
- During the fall season, selective gear may be allowed (dip nets, beach seines, and manned fish wheels) for nonsalmon and pink, sockeye, and coho salmon. If there is a conservation concern for chum or Chinook salmon, these species will be required to be released alive in these gears. Subsistence fishing restrictions may be in place until October 1 in the Lower Yukon and this date will be transitioned upriver to fishing districts based on salmon migration timing. Important fall chum spawning tributaries may remain closed through December (Koyukuk, Teedriinjik, Porcupine, and District 6 tributaries of Tanana River).

**Nonsalmon harvest information**

We have heard some concerns about the harvest of nonsalmon species for subsistence. Estimated harvests of nonsalmon species were low last year (from September 2020 to September 2021). This may be due to numerous factors, including reduced fishing due to salmon closures, lack of fishing gear, high gas prices, etc. Chart 4 (next page) shows estimated harvests of several nonsalmon species.

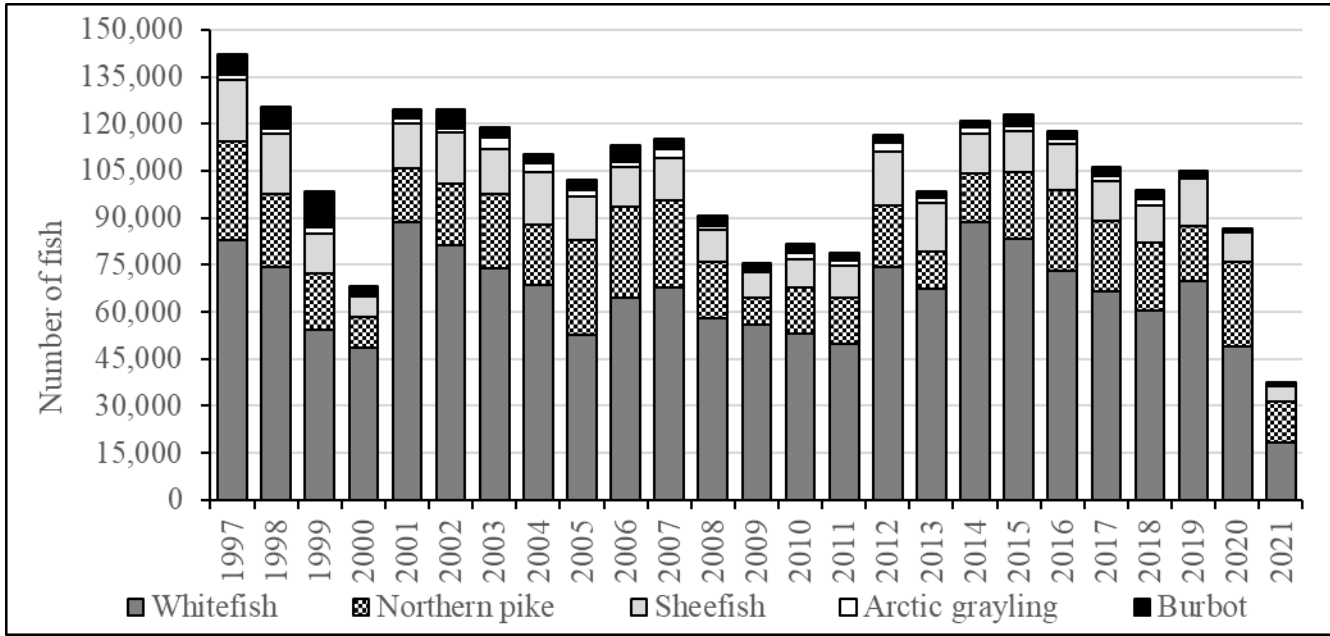


Chart 4. Nonsalmon harvest from permits and the post season subsistence harvest survey that occurs in the fall of each year. ‘Whitefish’ includes broad, humpback, and round whitefish and least and Bering cisco. Other nonsalmon species not shown on the chart include tomcod, grayling, blackfish, and lamprey.

**Updates and outreach**

**Announcements and daily test fishery counts will be posted on Facebook:**  
[www.facebook.com/YukonRiverFishingADFG/](http://www.facebook.com/YukonRiverFishingADFG/)

**Toll-free Fishing Schedule and Fish Counts hotline: 866-479-7387.**

Assessment project and management updates will be shared during the **YR DFA weekly teleconferences**. During weekly meetings we would like to hear about local conditions on the river from participants. **Starting June 7, join us on Tuesdays at 1:00 p.m. (Alaska time).**

**Call in number: 1-800-315-6338, Passcode: 98566#**

The ADF&G Emmonak field office will be open regular hours beginning in June; Mondays to Fridays 8 a.m. to 5 p.m., Saturdays 1 p.m. to 5 p.m., and closed on Sundays.

**ADF&G Emmonak office: 907-949-1320.**

ADF&G: Summer Season Area Manager, Deena Jallen; Fall Season Area Manager, Christy Gleason. **ADF&G Fairbanks office: 907-459-7274.**

**To speak with the USFWS Yukon River Subsistence manager, Holly Carroll, call 907-351-3029.**

For commercial fishery permit questions please see the Commercial Fisheries Entry Commission website here: [www.cfec.state.ak.us/](http://www.cfec.state.ak.us/)



This is an announcement by the Alaska Department of Fish and Game (ADF&G) in cooperation with the U.S. Fish and Wildlife Service (USFWS).

Announcements will be shared on Facebook at [www.facebook.com/YukonRiverFishingADFG](http://www.facebook.com/YukonRiverFishingADFG)

