

# Statewide Upland Bird Monitoring and



## Unit 13 Ptarmigan

Region IV – Board of Game  
Wasilla, Alaska  
13-20 February, 2015



Rick Merizon  
Small Game Biologist  
Palmer, AK

RC: 2, Tab: 1

# Statewide Small Game Hunter Survey

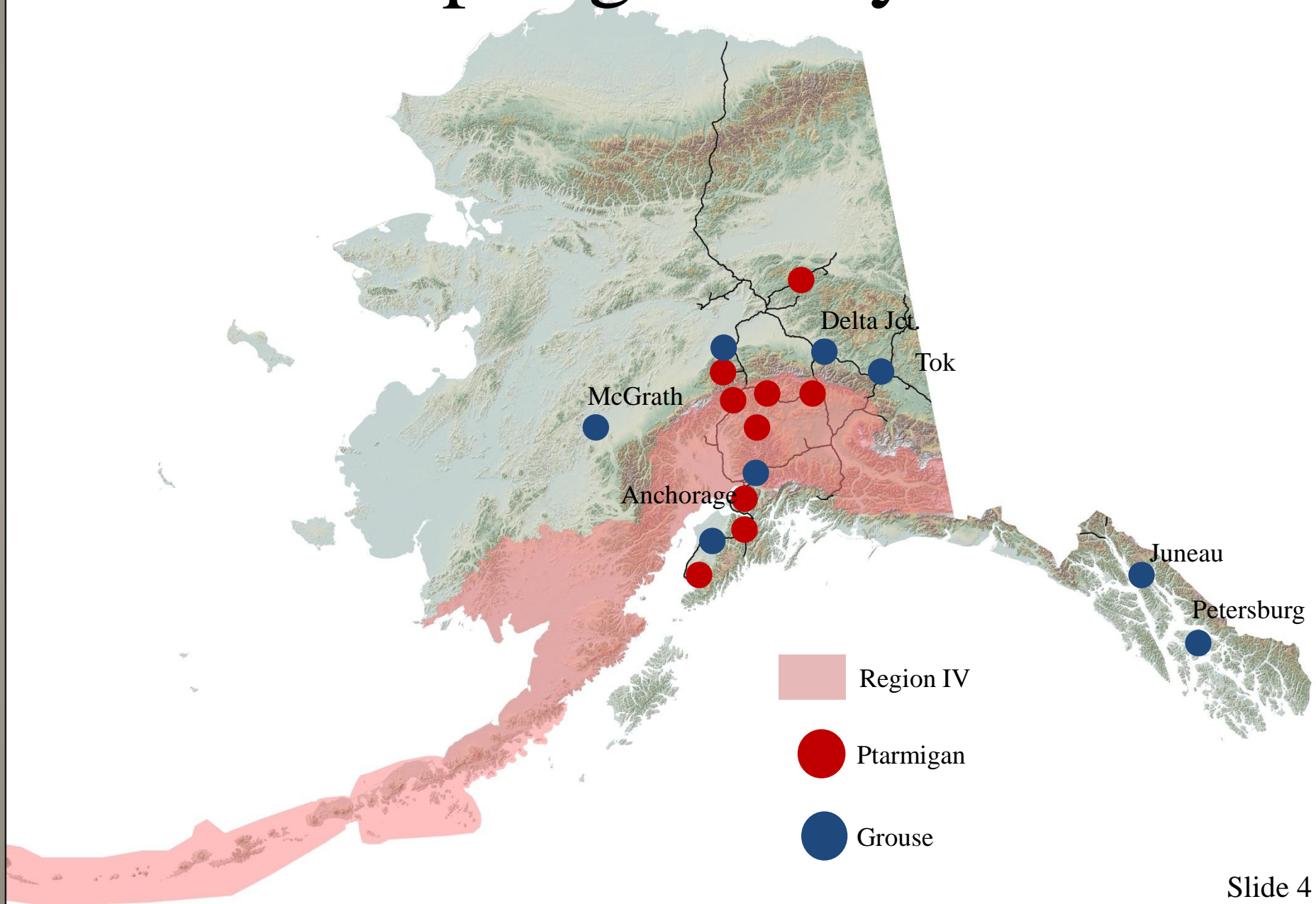
1. Spruce Grouse and “Ptarmigan” - most popular
2. Most hunt within local GMU
3. Most effort and harvest in GMUs: 13, 14, and 20
4. Over 40,000 including nearly 7,000 youth

# Population Monitoring Goals

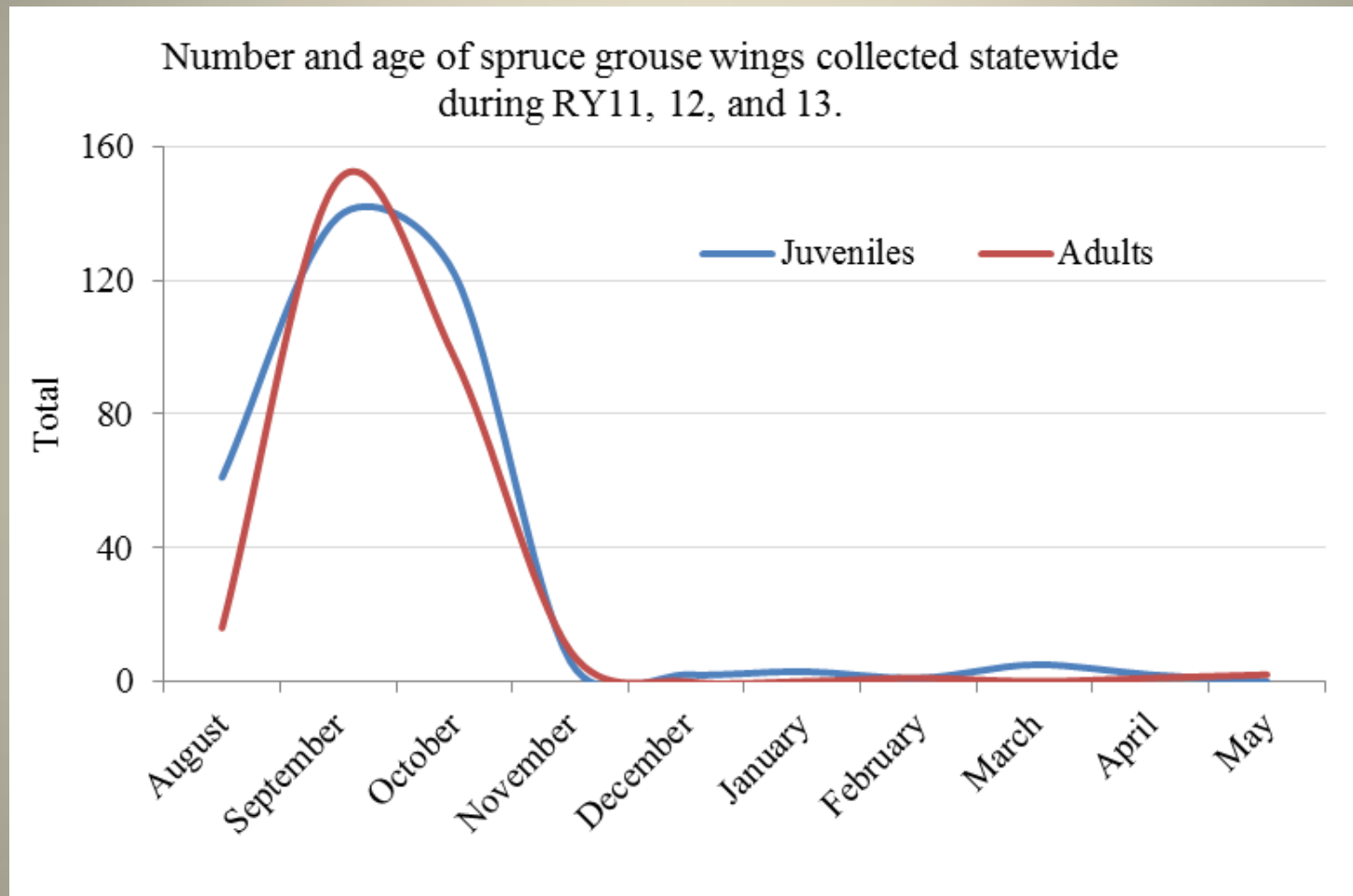
1. Abundance – spring breeding surveys
2. Productivity / Harvest Composition – wing collections
3. Chick Survival – nest monitoring
4. Movement / Mortality - research



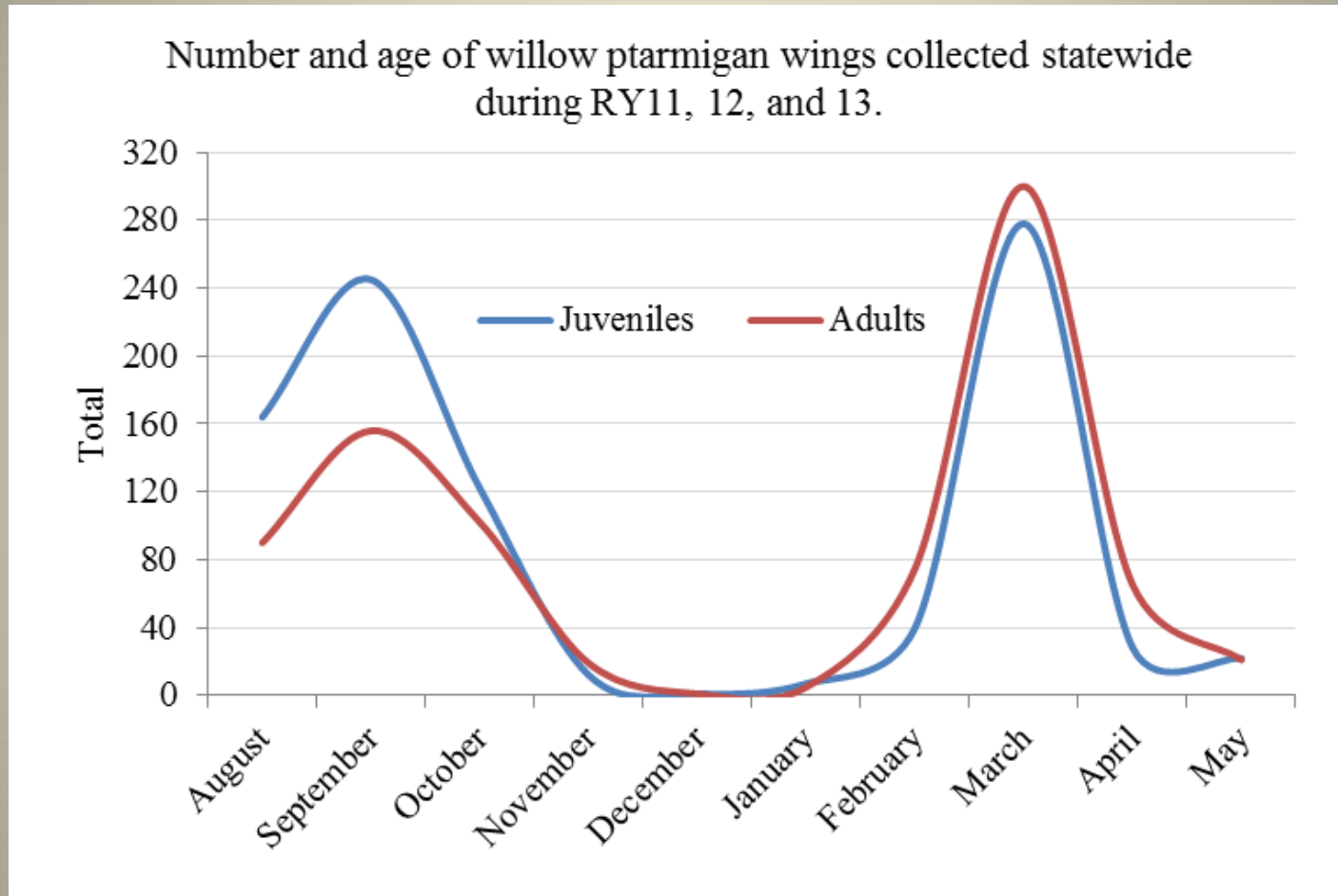
# Spring Surveys



# Wing Collections



# Wing Collections





# Spring Weather



# Ptarmigan: Unit 13

1. Most ptarmigan hunter days statewide
2. Average harvest = 1 bird / day / hunter
3. Snowmachines – over 40% of hunter days



# Ptarmigan: Unit 13



# Regulatory History: Unit 13

RY 2005: Subunit 13A, B, and E

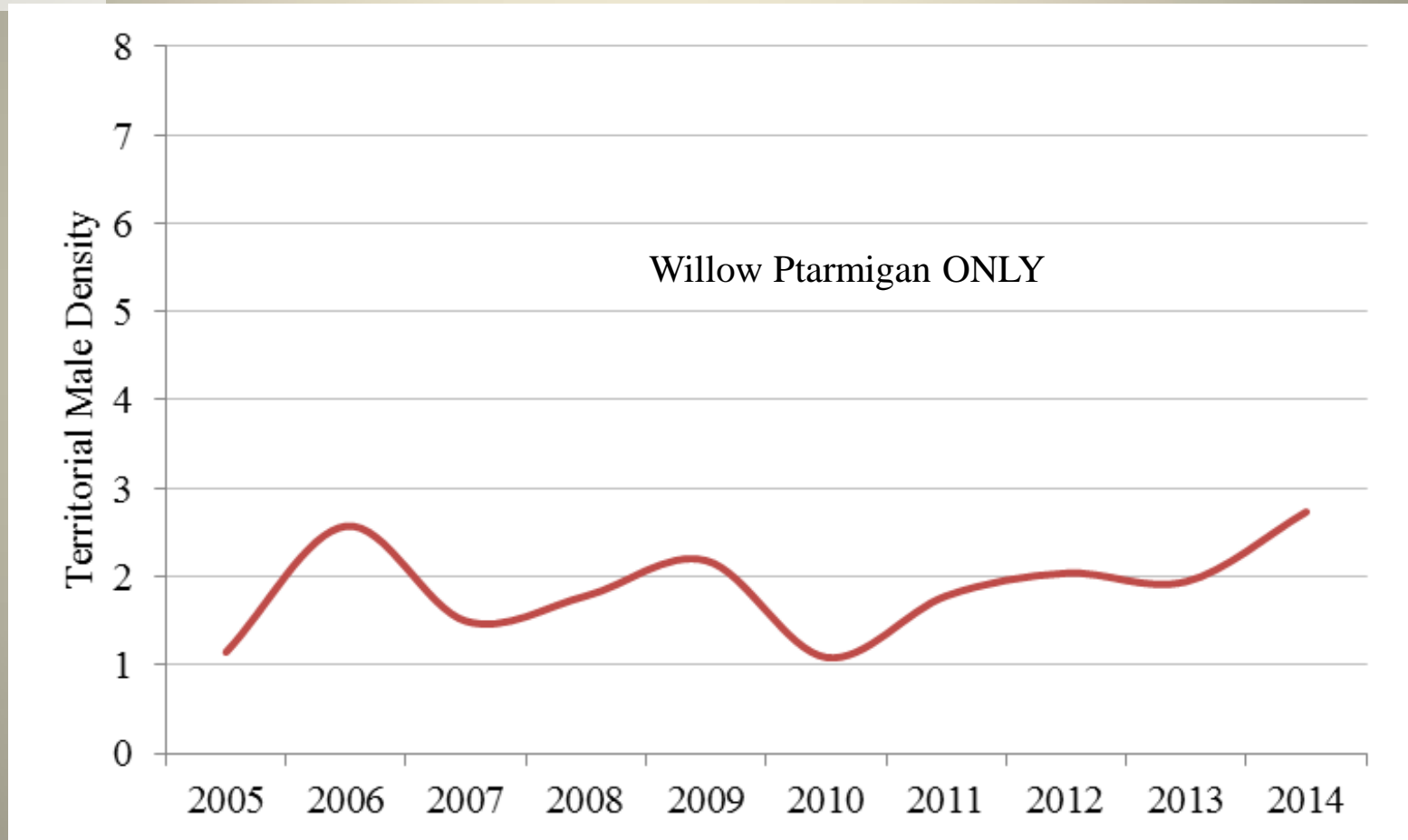
- August thru November 30 (10 Daily)
- December 1 thru March 31 (5 Daily)

RY 2009:

- ALL subunits – 10 Daily
- Subunit 13B – August thru November 30

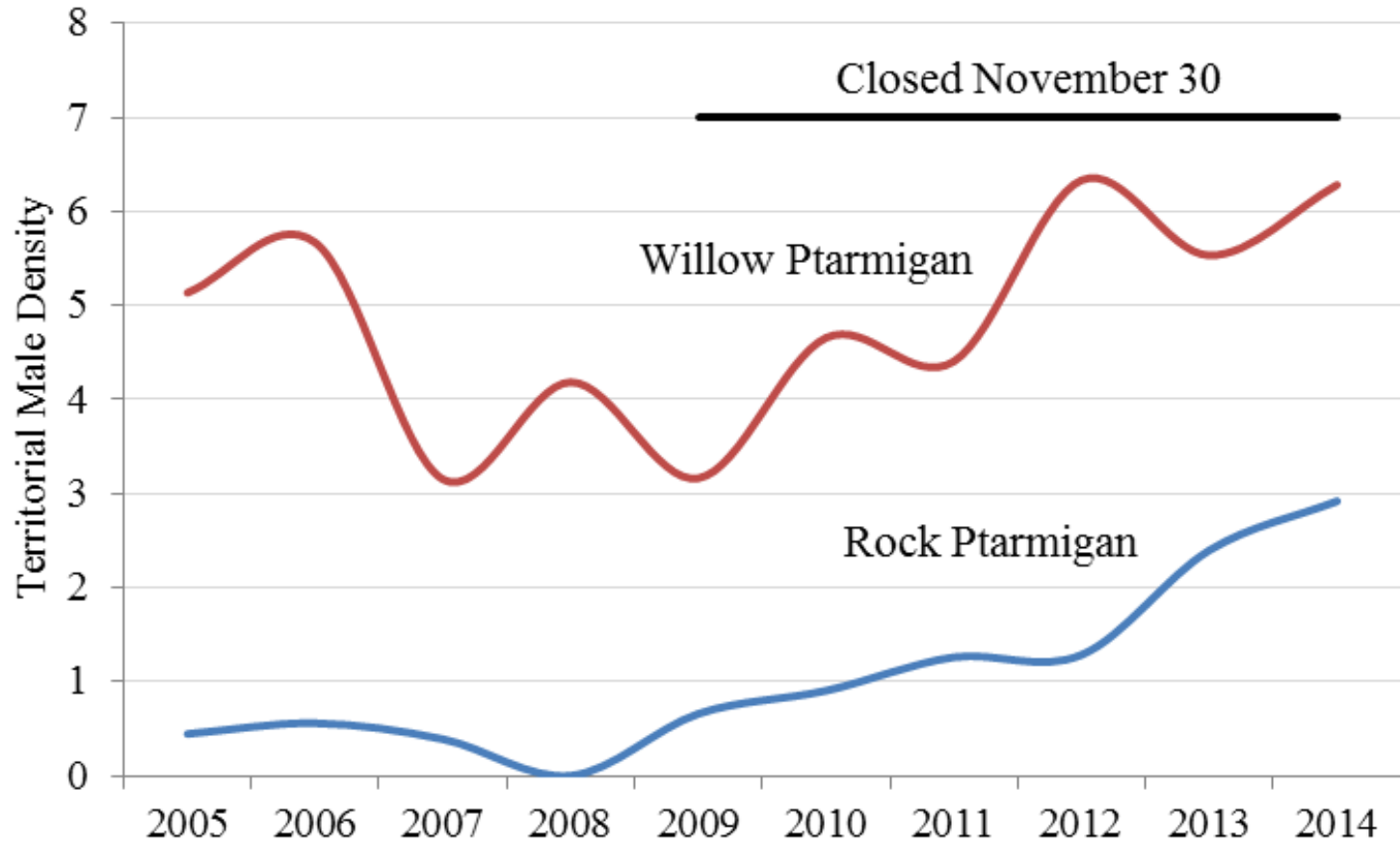
# Abundance Surveys: Unit 13

13E



# Abundance Surveys: Unit 13

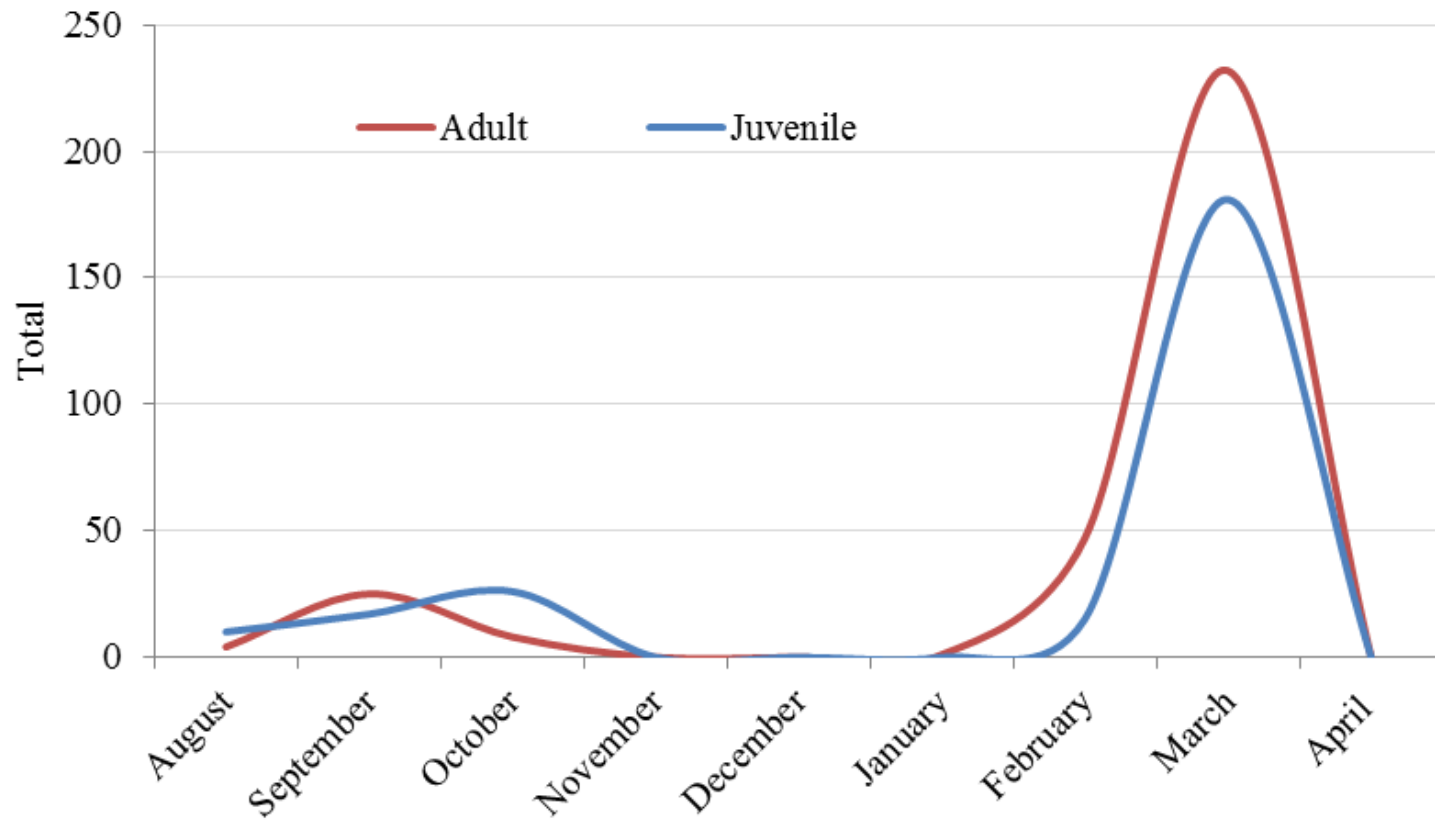
13B



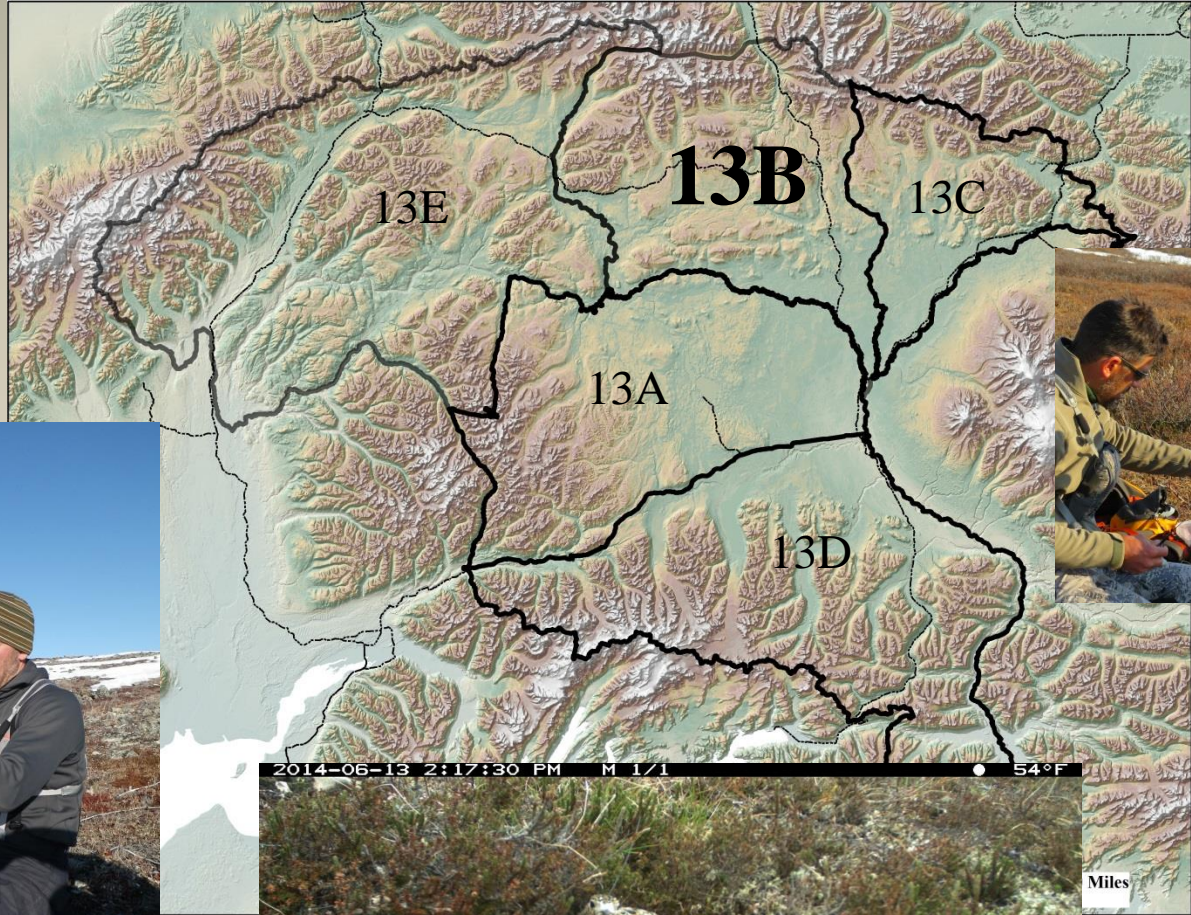


# Wing Collections: Unit 13

Unit 13 willow ptarmigan harvest age composition, RY11, 12, and 13.

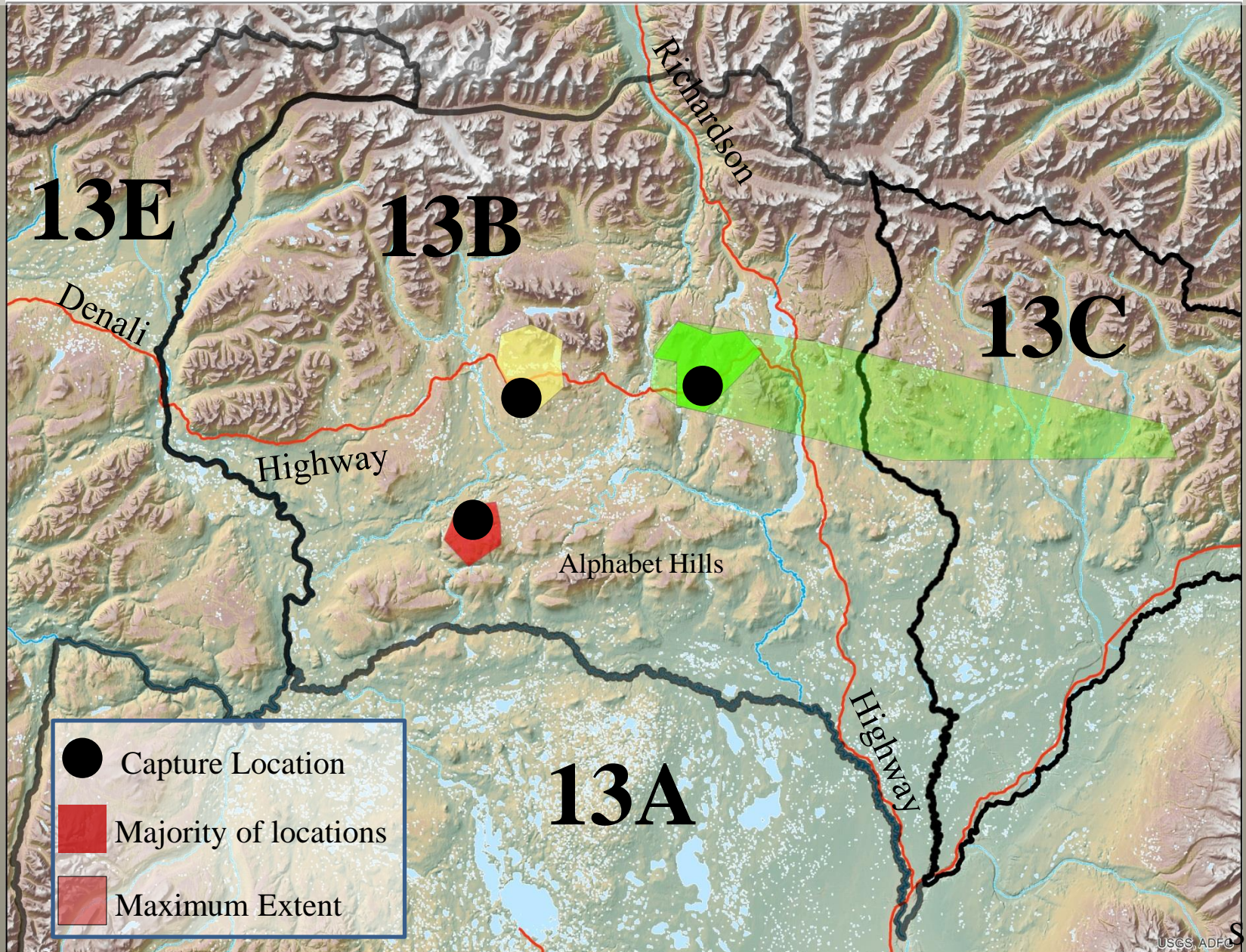


# Rock Ptarmigan Study



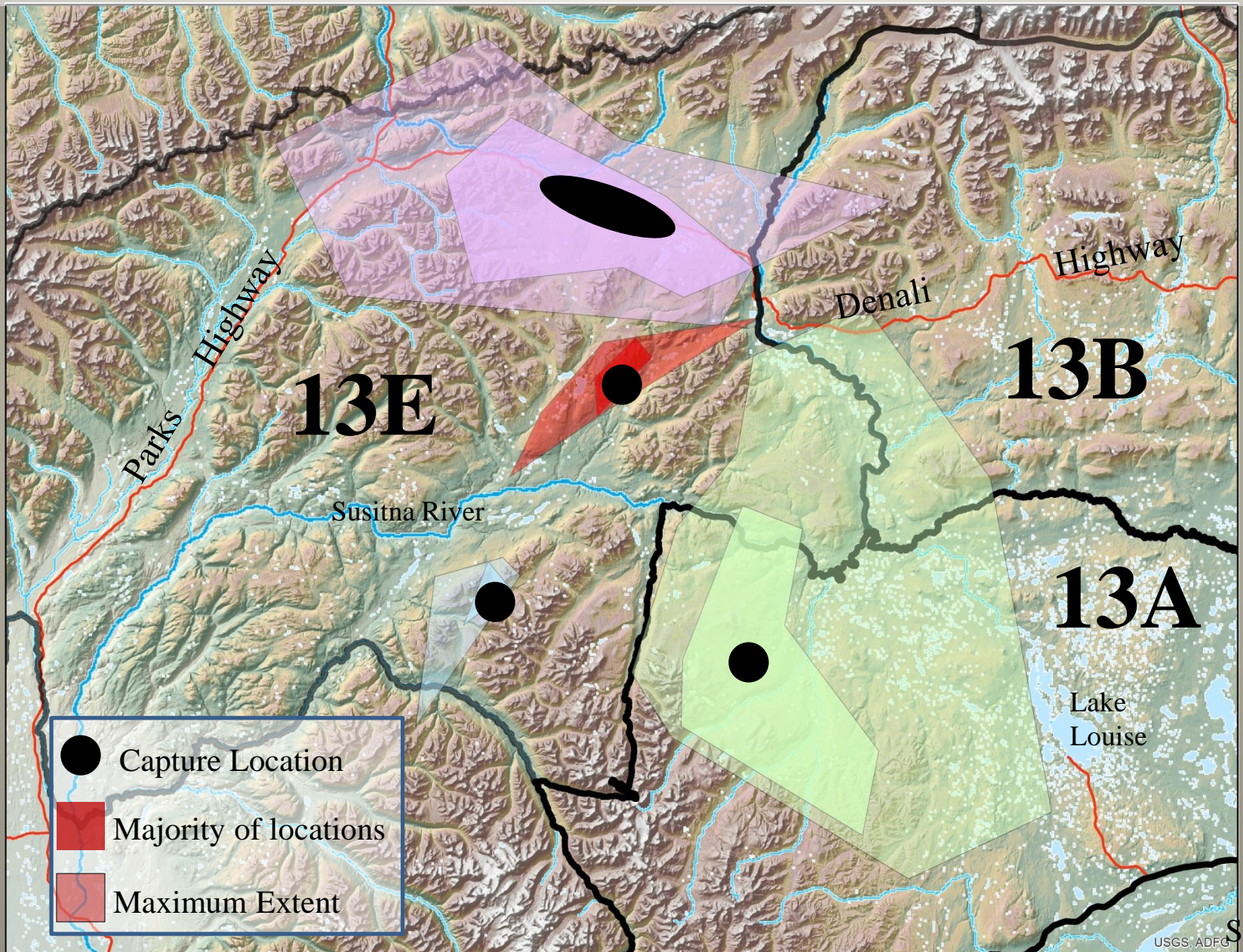


# Rock Ptarmigan Study





# Willow Ptarmigan Study





# Summary

1. Late winter harvest shown to be additive
2. No mechanism to track in-season harvest
3. Management goal in areas with high pressure, good access
4. Should we continue to evaluate effects of harvest in 13B?



Questions?

