

Unit 11 and 13

PROPOSALS

RC 2

TAB 6

RIV Board of Game
13-20 February 2015

Frank Robbins, AB
Cory Stantorf, Asst. AB
Glennallen ADFG



Change wolf population objective in Unit 13

Paxson AC Proposal

NEUTRAL

Paxson AC

Support 5-0

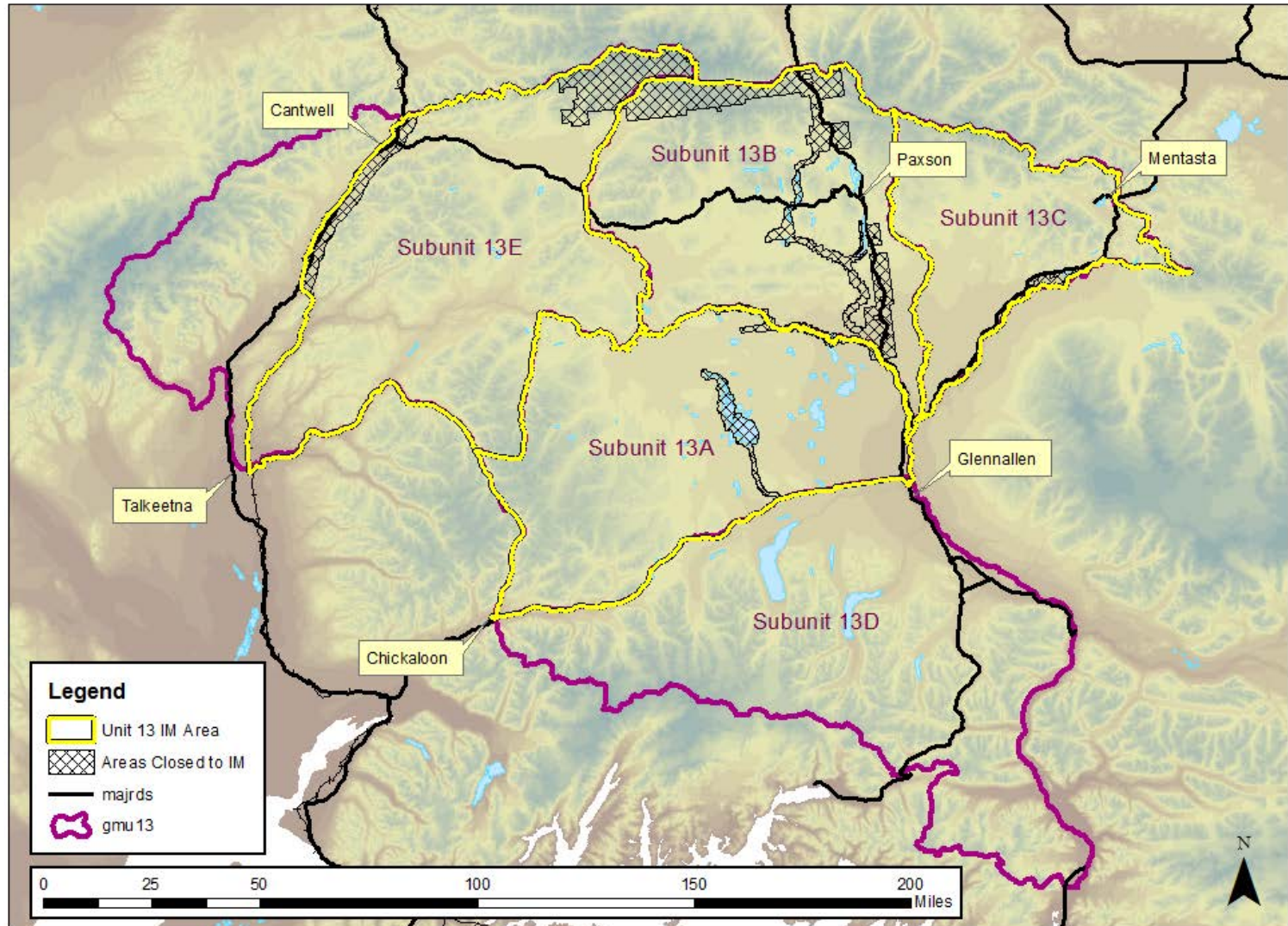
Copper Basin AC

Opposed 0-7

Denali AC

Opposed 0-7

Unit 13 SDA Area



Current Wolf Pop Objective:

135-165 Wolves

Proposed Wolf Pop Objective:

Midpoint of 135-165 (150)

Moose population and objectives in Unit 13

Subunit	13A	13B	13C	13D	13E
Objective	3,500–4,200	5,300–6,300	2,000–3,000	1,200–1,900	5,000–6,000
2008	2,500	4,450	1,570	1,940	5,160
2009	3,530	4,630	1,610	1,900	4,940
2010	3,490	5,280	1,700	2,280	5,430
2011	3,890	5,340	1,950	1,950	5,780
2012	3,650	5,350	1,680	1,950	5,570
2013	4,000	4,930	1,770	1,500	4,950

Moose population and objectives in Unit 13

Subunit	13A	13B	13C	13D	13E
Objective	3,500–4,200	5,300–6,300	2,000–3,000	1,200–1,900	5,000–6,000
2008	2,500	4,450	1,570	1,940	5,160
2009	3,530	4,630	1,610	1,900	4,940
2010	3,490	5,280	1,700	2,280	5,430
2011	3,890	5,340	1,950	1,950	5,780
2012	3,650	5,350	1,680	1,950	5,570
2013	4,000	4,930	1,770	1,500	4,950

Spring wolf population and objectives in Unit 13

Objective	135-165
Year	Spring Population
2008	144
2009	180
2010	146
2011	104
2012	191
2013	-

Spring wolf population and objectives in Unit 13

Objective	135-165
Year	Spring Population
2008	144
2009	180
2010	146
2011	104
2012	191
2013	-

Change wolf population objective in Unit 13

Paxson AC Proposal

NEUTRAL

Paxson AC

Support 5-0

Copper Basin AC

Opposed 0-7

Denali AC

Opposed 0-7

Modify the Unit 13 wolf control program

Copper Basin AC proposal

OPPOSED

Paxson AC

Support w/Amendments 5-0

Copper Basin AC

Support 7-0

Denali AC

No Vote

Current Wolf Pop Objective:

135-165 Wolves

Proposed Wolf Pop Objective:

100-165 Wolves

Moose population and objectives in Unit 13

Subunit	13A	13B	13C	13D	13E
Objective	3,500–4,200	5,300–6,300	2,000–3,000	1,200–1,900	5,000–6,000
Mid point	3,850	5,800	2,500	1,550	5,500
2008	2,500	4,450	1,570	1,940	5,160
2009	3,530	4,630	1,610	1,900	4,940
2010	3,490	5,280	1,700	2,280	5,430
2011	3,890	5,340	1,950	1,950	5,780
2012	3,650	5,350	1,680	1,950	5,570
2013	4,000	4,930	1,770	1,500	4,950

Modify the Unit 13 wolf control program

Copper Basin AC proposal

OPPOSED

Paxson AC

Support w/Amendments 5-0

Copper Basin AC

Support 7-0

Denali AC

No Vote

Lower moose population objective in 13B

Paxson AC proposal

NEUTRAL

Paxson AC

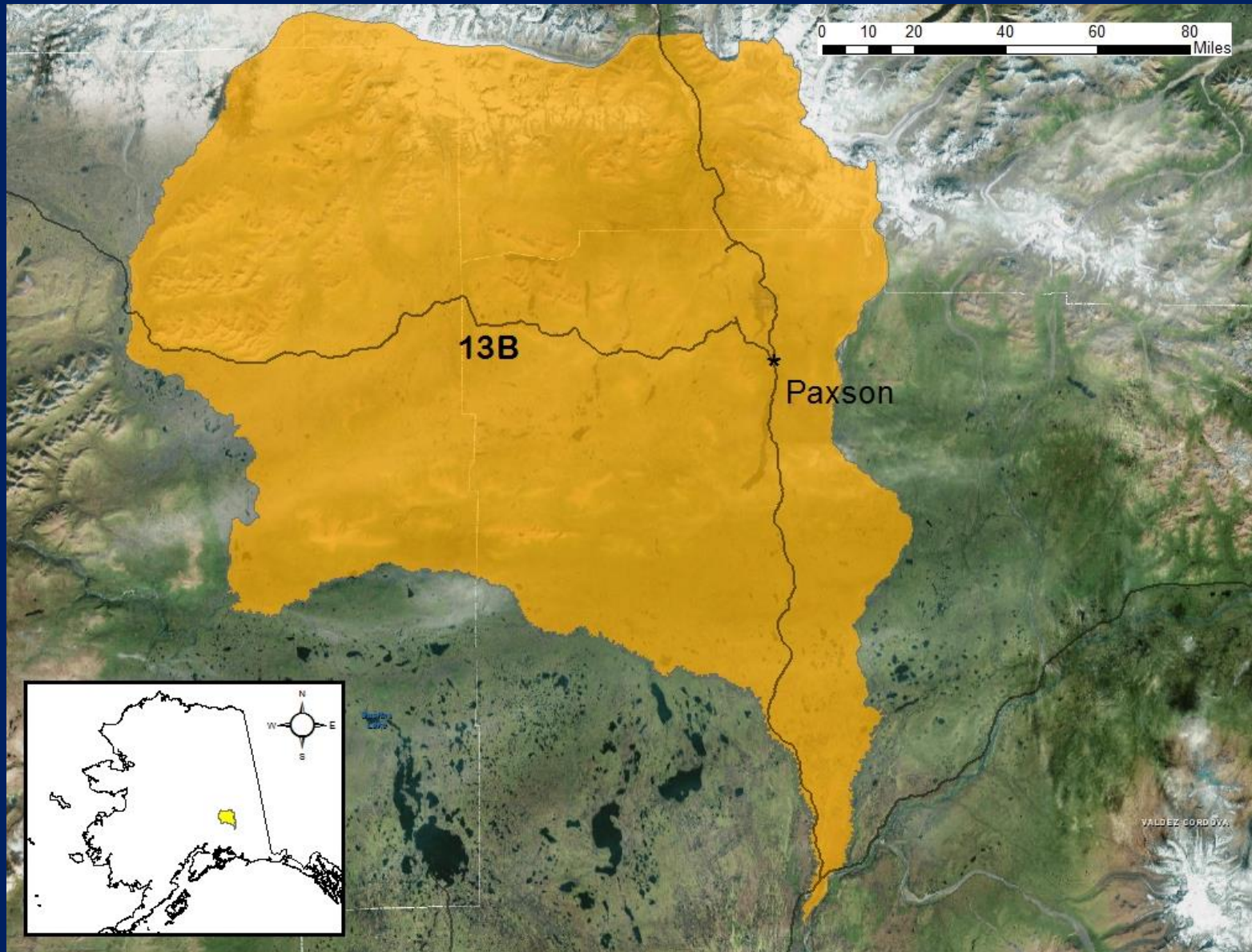
Support 5-0

Copper Basin AC

Opposed 0-7

Denali AC

No action



Current 13B population objective **5,300 - 6,300**

Current 13B harvest objective **310 - 620**

Proposed 13B population objective **4,000 - 5,000**

Proposed 13B harvest objective **240 - 280**

Moose population and objectives in Unit 13B

Year	Population Objective 5,300–6,300	Harvest Objective 310–620
2008	4,450	188
2009	4,630	243
2010	5,280	304
2011	5,340	267
2012	5,350	202
2013	4,930	201

Moose population and objectives in Unit 13B

Year	Population Objective 5,300–6,300	Harvest Objective 310–620
2008	4,450	188
2009	4,630	243
2010	5,280	304
2011	5,340	267
2012	5,350	202
2013	4,930	201

Moose population and objectives in Unit 13B

Year	Population Objective 4,000–5,000	Harvest Objective 240–280
2008	4,450	188
2009	4,630	243
2010	5,280	304
2011	5,340	267
2012	5,350	202
2013	4,930	201

Lower moose population objective in 13B

Paxson AC proposal

NEUTRAL

Paxson AC

Support 5-0

Copper Basin AC

Opposed 0-7

Denali AC

No action

Modify moose population and objectives in all subunits of Unit 13

Copper Basin AC proposal

NEUTRAL

Paxson AC

Support w/Amendments 5-0

Copper Basin AC

Support 7-0

Denali AC

Opposed 0-7

Subunit	Current		Proposed	
	Population Size Objective	Harvest Objective	Population Size Objective	Harvest Objective
Unit 13A	3,500–4,200	210–420	No Change	245–294
Unit 13B	5,300–6,300	310–620	No Change	265–315
Unit 13C	2,000–3,000	155–350	No Change	100–150
Unit 13D	1,200–1,900	75–190	1,500–2,200	75–110
Unit 13E	5,000–6,000	300–600	5,500–6,500	275–325

Moose population objectives in Unit 13

Subunit	13D	13E
Objective	1200–1900	5000–6000
2008	1,940	5,160
2009	1,900	4,940
2010	2,280	5,430
2011	1,950	5,780
2012	1,950	5,570
2013	1,500	4,950

Proposed moose population objectives in Unit 13

Subunit	13D	13E
Proposed objective	1,500–2,200	5,500–6,500
2008	1,940	5,160
2009	1,900	4,940
2010	2,280	5,430
2011	1,950	5,780
2012	1,950	5,570
2013	1,500	4,950

Moose harvest objectives in Unit 13

	13A	13B	13C	13D	13E
Objective	210–420	310–620	155–350	75–190	300–600
2008	238	188	61	65	169
2009	268	243	105	80	164
2010	289	304	97	66	202
2011	295	267	113	83	179
2012	223	202	93	54	132
2013	255	201	59	67	140

Proposed moose harvest objectives in Unit 13

Proposed Objectives	13A	13B	13C	13D	13E
	245–294	265–315	100–150	75–110	275–325
2008	238	188	61	65	169
2009	268	243	105	80	164
2010	289	304	97	66	202
2011	295	267	113	83	179
2012	223	202	93	54	132
2013	255	201	59	67	140

Modify moose population and objectives in all subunits of Unit 13

Copper Basin AC proposal

NEUTRAL

Paxson AC

Support w/Amendments 5-0

Copper Basin AC

Support 7-0

Denali AC

Opposed 0-7

Reauthorize antlerless moose hunts in Unit 13

Department proposal

SUPPORT

Paxson AC

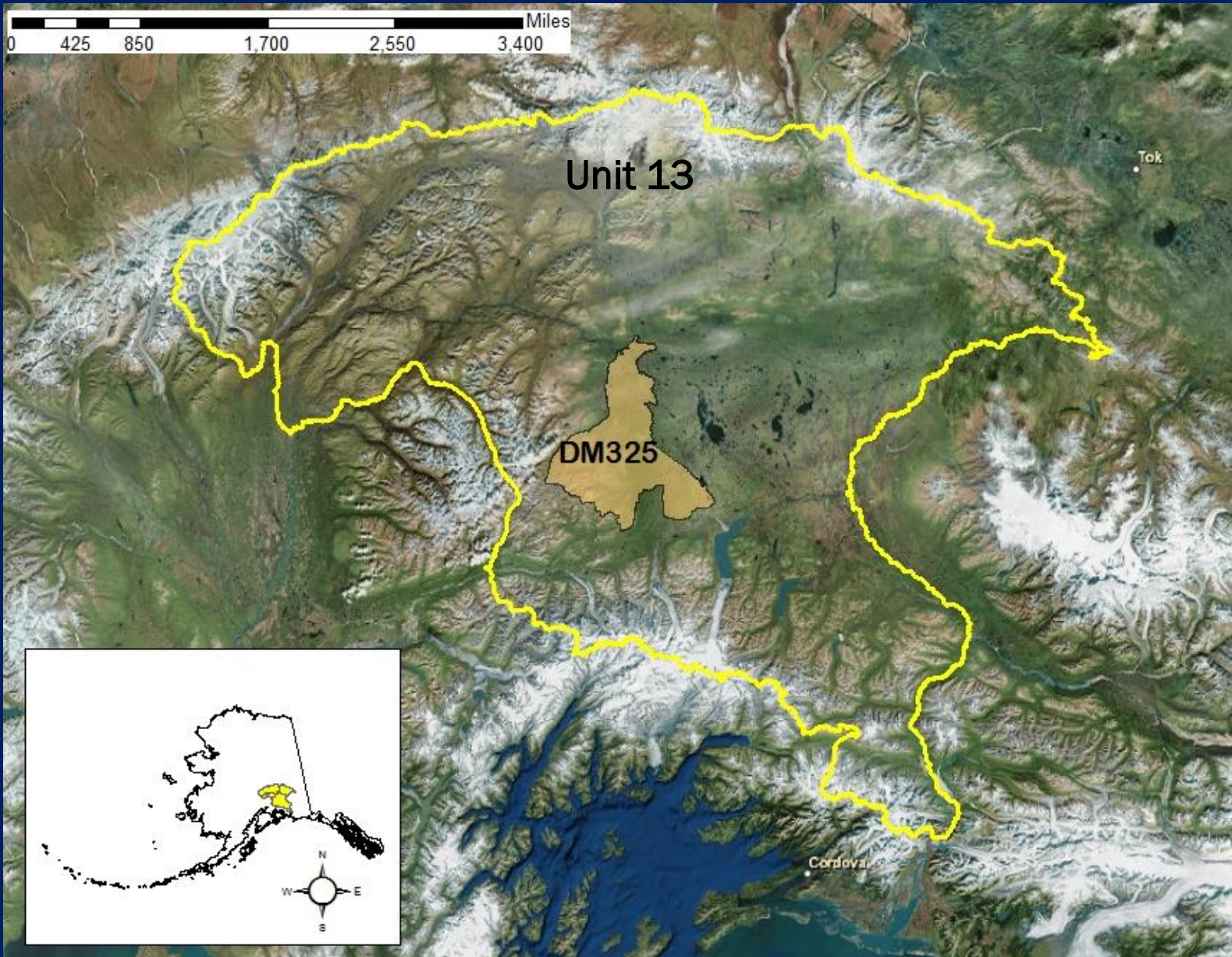
Opposed 0-5

Copper Basin AC

Take no action 7-0

Denali AC

Support 5-3



Subunit	13A
Objective	3500–4200
2008	2,500
2009	3,530
2010	3,490
2011	3,890
2012	3,650
2013	4,000

Reauthorize antlerless moose hunts in Unit 13

Department proposal

SUPPORT

Paxson AC

Opposed 0-5

Copper Basin AC

Take no action 7-0

Denali AC

Support 5-3

Modify the 13A antlerless cow hunt

Copper Basin AC proposal

Neutral

Paxson AC

Opposed 0-5

Copper Basin AC

Support 7-0

Denali AC

Opposed 0-7

Current antlerless season dates:

October 1-31 and March 1-31

Proposed antlerless season dates:

October 1-31 OR March 1-31

Moose population and objectives in Unit 13

Subunit	13A
Objective	3500–4200
Mid point	3,850

Modify the 13A antlerless cow hunt

Copper Basin AC proposal

Neutral

Paxson AC

Opposed 0-5

Copper Basin AC

Support 7-0

Denali AC

Opposed 0-7

Convert Unit 13 nonresident moose drawing hunts to registration permit hunts

Public proposal

NEUTRAL

Paxson AC

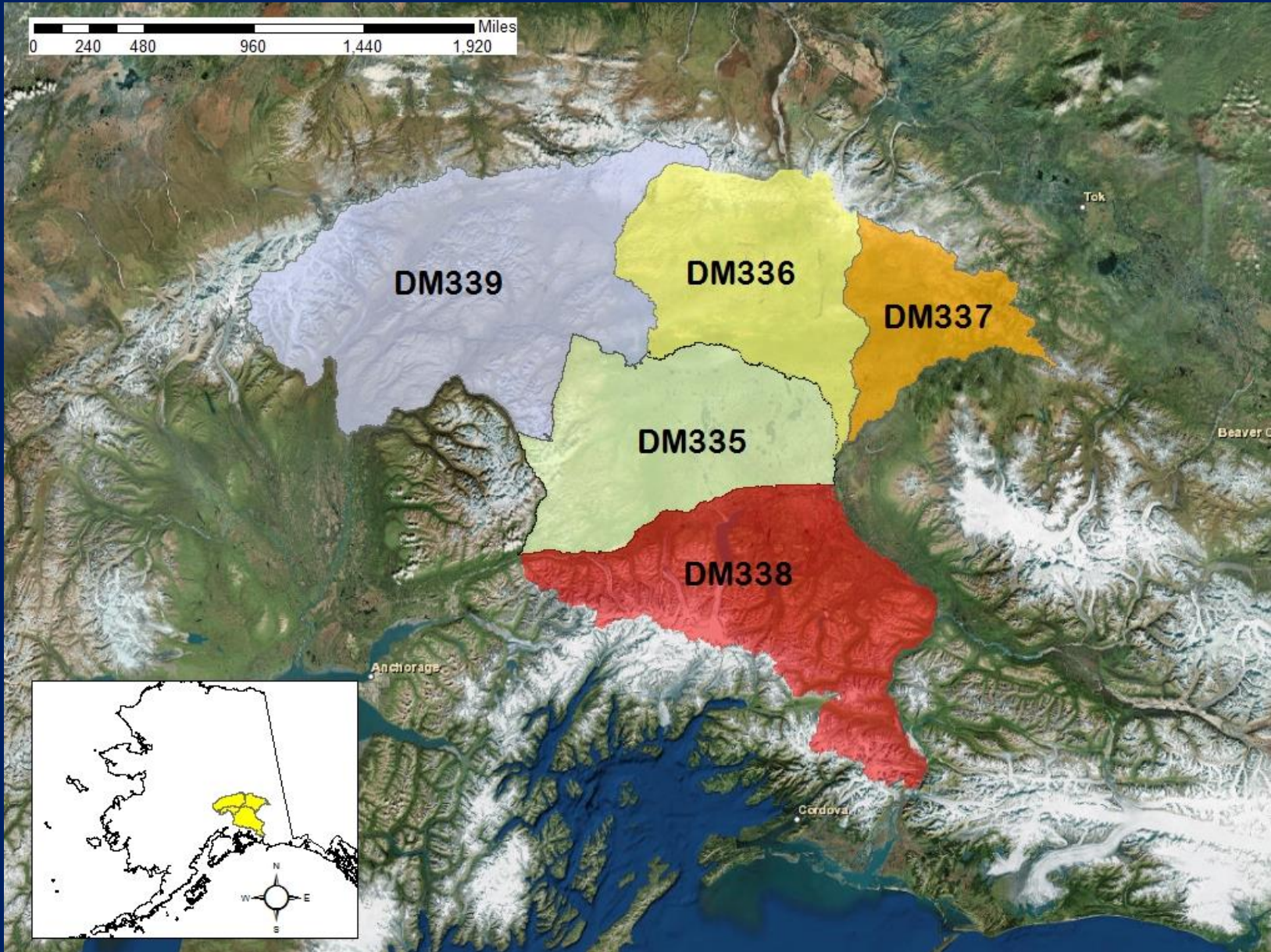
No opinion

Copper Basin AC

Opposed 0-7

Denali AC

No action



Current Non-resident moose hunting regulations:

Drawing Bull September 1 - September 20

Proposed Non-resident moose hunting regulations:

1 Bull by registration September 1 - September 20

Unit 13 nonresident moose drawing permit hunts (DM335-DM339)

Year	Applications	Permits	Hunted	Harvest
2009	224	50	33	12
2010	393	110	60	13
2011	428	65	35	16
2012	751	105	57	9
2013	873	105	60	18

Convert Unit 13 nonresident moose drawing hunts to registration permit hunts

Public proposal

NEUTRAL

Paxson AC

No opinion

Copper Basin AC

Opposed 0-7

Denali AC

No action

Create a non-resident caribou drawing hunt in Unit 13

Public proposal

NEUTRAL

Paxson AC

Opposed 1-4

Copper Basin AC

Opposed 0-7

Denali AC

Opposed 2-5

Residents:

**Drawing Caribou
(DC480-483)**

**August 20 – September 20;
October 21 – March 31**

**Tier I Registration
(RC566)**

**August 10 – September 20;
October 21 – March 31**

**CSH
(CC001)**

**August 10 – September 20;
October 21 – March 31**

Non-Residents:

Current Season:

No Open Season

Proposed Season:

1 caribou by drawing permit

Create a non-resident caribou drawing hunt in Unit 13

Public proposal

NEUTRAL

Paxson AC

Opposed 1-4

Copper Basin AC

Opposed 0-7

Denali AC

Opposed 2-5

Limit of 2 Nelchina caribou drawing tags per household

Public proposal

NEUTRAL

Paxson AC

Opposed 1-4

Copper Basin AC

Opposed 0-7

Denali AC

Support 8-1

Current caribou hunt structure for residents:

<i>Drawing caribou (DC480-483)</i>	<i>August 20 – September 20; One caribou per person October 21 – March 31</i>
<i>Tier I Registration (RC566)</i>	<i>August 10 – September 20; One caribou per household October 21 – March 31</i>
<i>CSH caribou (CC001)</i>	<i>August 10 – September 20; One caribou per household October 21 – March 31</i>

Unit 13 Number of Nelchina caribou hunting permits issued annually and harvest

Year	RC566	CC001	DC480-483	Harvest Quota	Reported Harvest
2009	500	479	-	1,000	797
2010 ¹	1,151		-	2,300	2,439 ²
2011	3,148	323	1,127	2,400	2,515
2012	5,045	403	3,001	5,500	4,429
2013	6,880	689	5,000	2,500	2,640

¹ The CSH caribou hunt was not offered during regulatory year 2010.

² Reported harvest includes caribou taken by hunters with TC566 permits.

Number of drawing caribou tags per household

Year	Permits Issued	1 per household	2 per household	3 per household	4 per household	5 per household	6 per household
2011	1127	985	65	4	0	0	0
2012	3000	2124	335	46	12	4	0
2013	5008	3331	617	94	35	3	1
2014	1000	877	60	1	0	0	0

Limit of 2 Nelchina caribou drawing tags per household

Public proposal

NEUTRAL

Paxson AC

Opposed 1-4

Copper Basin AC

Opposed 0-7

Denali AC

Support 8-1

Create a split fall Nelchina caribou hunt in Unit 13

Public proposal

NEUTRAL

Paxson AC

Complicated enough

Copper Basin AC

Opposed 0-7

Denali AC

Opposed 0-9

Current Tier I season:

**Tier I Registration
(RC566)**

**August 10 – September 20;
October 21 – March 31**

Proposed Tier I season:

**Tier I Registration
(RC566)**

**August 10 – August 31 or September 1 – September 20
October 21 – March 31**

Nelchina caribou Tier I registration hunt (RC566) harvest chronology

	Number of Permits Issued	August 10–31	September 1–20	October 21- March 31
2009	500	88 (32%)	131 (48%)	56 (20%)
2010	1151	266 (44%)	344 (56%)	**
2011	3148	750 (47%)	718 (45%)	142 (9%)
2012	5045	946 (37%)	1099 (43%)	482 (19%)
2013	6878	921 (59%)	647 (41%)	*

**Only Tier II TC566 permit holders participated in the winter

*No winter hunt

Unit 13 total Nelchina harvest

Year	RC566	CC001	DC480-483	Harvest Quota	Reported Harvest
2009	277	127	-	1,000	797
2010 ¹	615		-	2,300	2,439 ²
2011	1,626	87	319	2,400	2,515
2012	2,542	150	1,023	5,500	4,429
2013	1,573	114	609	2,500	2,640

¹ The CSH caribou hunt was not offered during regulatory year 2010.

² Reported harvest includes caribou taken by hunters with TC566 permits

Create a split fall Nelchina caribou hunt in Unit 13

Public proposal

NEUTRAL

Paxson AC

Complicated enough

Copper Basin AC

Opposed 0-7

Denali AC

Opposed 0-9

**Split hunt opportunity into 3 seasons
(Aug 10-Sept 20, Oct 20-Dec 31, Jan 1-Mar 31)
for caribou Tier I, drawing, and CSH hunts**

Public proposal

NEUTRAL

Paxson AC

Opposed 0-5

Copper Basin AC

Opposed 0-7

Denali AC

No Vote

Current Unit 13 caribou regulations:

**Drawing Caribou
(DC480-483)** **Aug. 20 – Sept. 20;
Oct. 21 – Mar. 31**

**Tier I Registration
(RC566)** **Aug. 10 – Sept. 20;
Oct. 21 – Mar. 31**

**Tier I CSH caribou
(CC001)** **Aug. 10 – Sept. 20;
Oct. 21 – Mar. 31**

Proposed Unit 13 caribou season changes:

All caribou hunt types-

Aug. 10 – Sept. 20	1/3 quota
Oct. 20 – Dec. 31	1/3 quota
Jan. 1 – Mar. 31	1/3 quota

Chronology of state Nelchina caribou harvests

Year	Total Harvest	August 10 – September 20	October 20 – December 31	January 1 – March 31
2009	405	74%	16%	9%
2010	1905	33%	67%	-
2011	2032	89%	11%	-
2012	3715	75%	18%	7%
2013*	2296	100%	-	-

* No winter hunt.

Management Considerations:

A. Migration

B. Management objective

C. Winter

**Split hunt opportunity into 3 seasons
(Aug 10-Sept 20, Oct 20-Dec 31, Jan 1-Mar 31)
for caribou Tier I, drawing, and CSH hunts**

Public proposal

NEUTRAL

Paxson AC

Opposed 0-5

Copper Basin AC

Opposed 0-7

Denali AC

No Vote

Align CSH and general season moose hunts

NEUTRAL

CSH Sub. Committee Support 6-5

Paxson AC

Opposed 0-5

Copper Basin AC

Support 7-0 w/admendments CSH start date to Sept.1

Denali AC

Support 8-0

Current general hunt moose season:

**General Season September 1 – September 20
(GM000)**

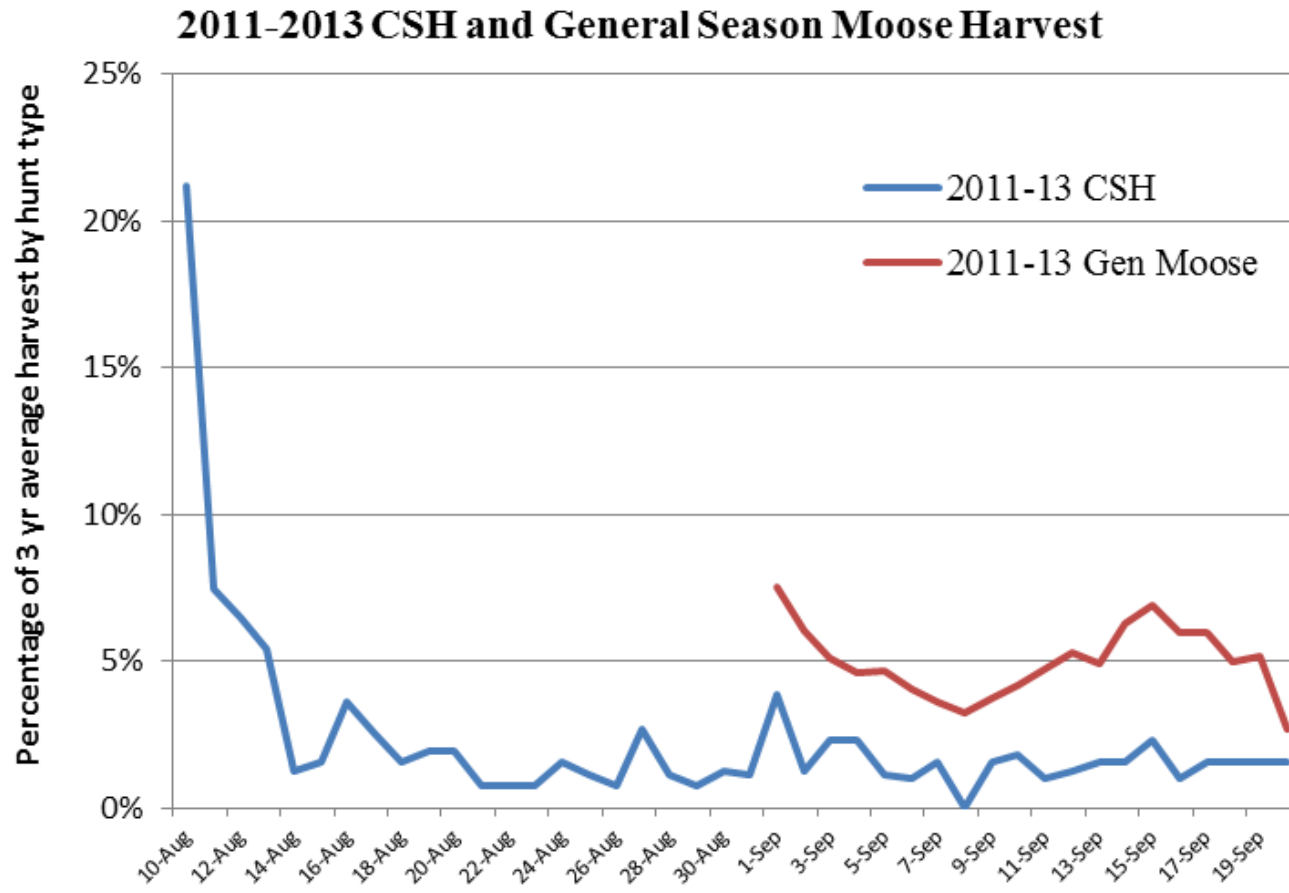
Current CSH moose hunt season:

**Community Subs. August 10 – September 20
(CM300 & CM301)**

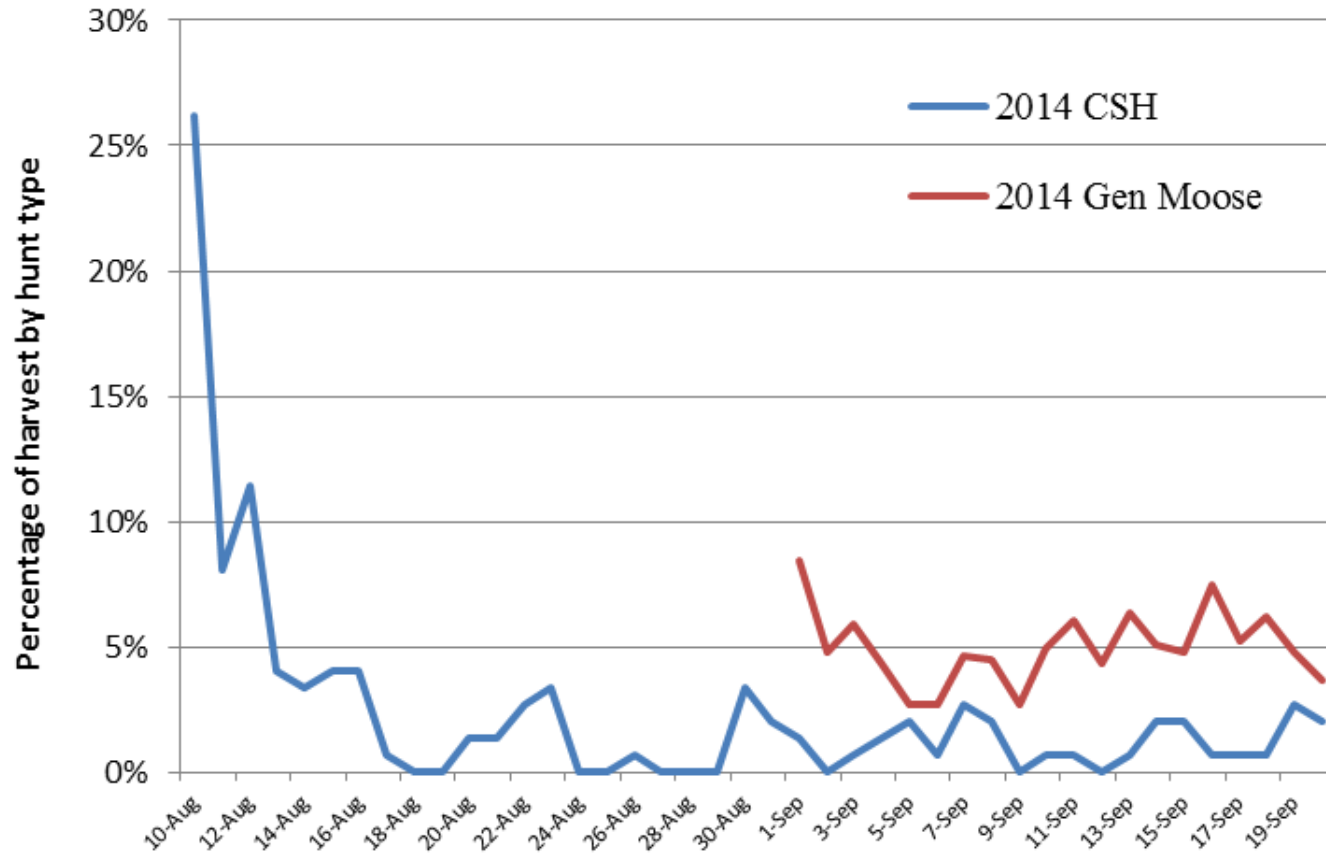
Percent of CSH moose harvest that did and did not meet general season antler requirements

Year	% Did Meet	% Did not meet
2009	30	70
2010	*	*
2011	30	70
2012	25	75
2013	46	54
2014	49	51

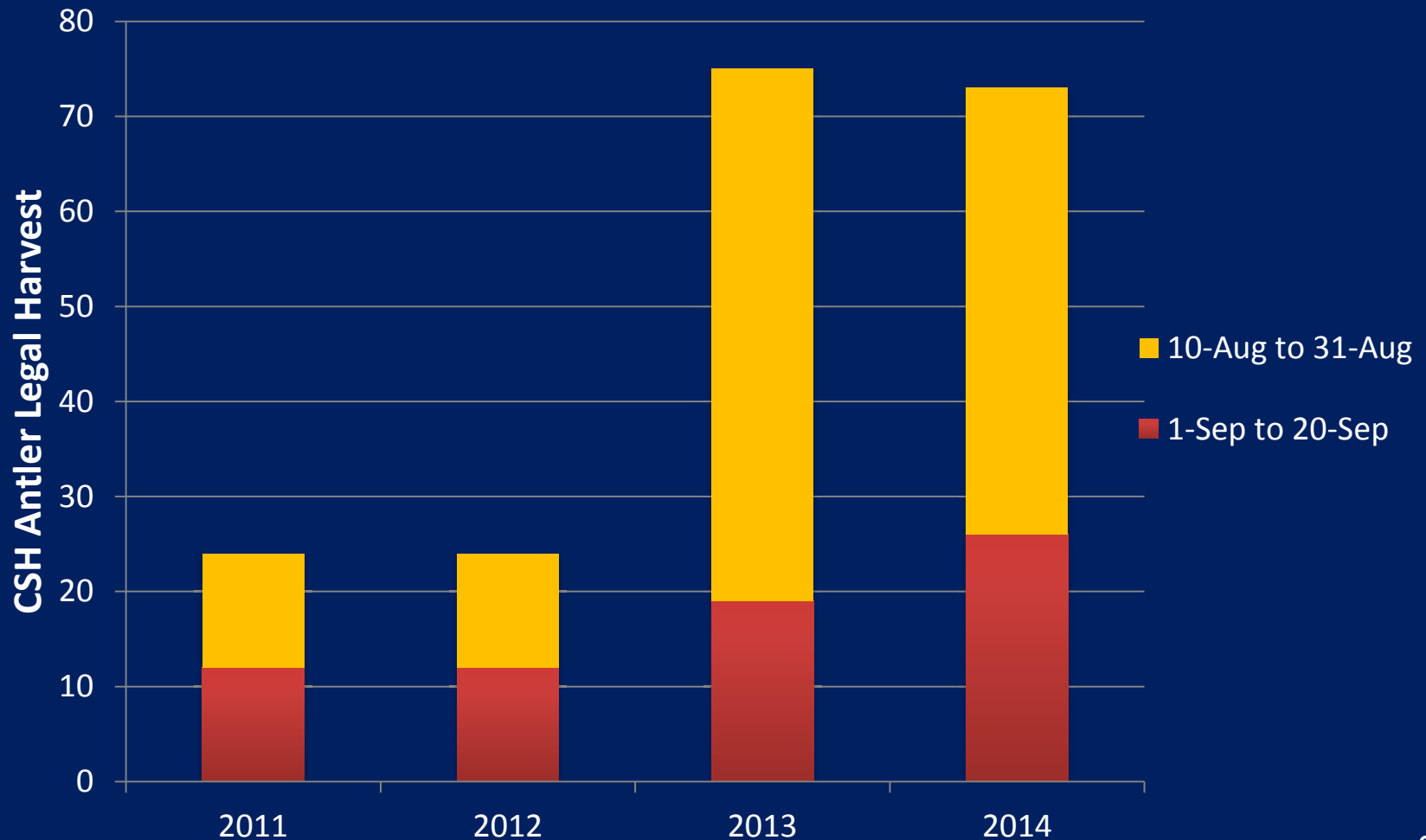
*** The community hunt was not offered**



2014 CSH and General Season Moose Harvest



Antler Legal Moose Harvested by CSH Hunters Prior to and After Sept 1.



Align CSH and general season moose hunts

NEUTRAL

CSH Sub. Committee Support 6-5

Paxson AC

Opposed 0-5

Copper Basin AC

Support 7-0 w/admendments CSH start date to Sept.1

Denali AC

Support 8-0

Require CSH participation for at least 2 years

NEUTRAL

CSH Sub. Committee Support 6-4

Paxson AC *Opposed 0-5*

Copper Basin AC *Opposed 0-7*

Denali AC *Support 8-0*

Considerations:

Does this apply to all participants or just the head of household?

What happens to this restriction if a participant changes households?

Are there any conditions under which a person could appeal the restriction?

Can individuals change group affiliation?

What happens to group in the event of:

- FTR listing?

- Loss of hunting privileges?

- Does not meet 25 individuals requirement?

Require CSH participation for at least 2 years

NEUTRAL

CSH Sub. Committee Support 6-4

Paxson AC *Opposed 0-5*

Copper Basin AC *Opposed 0-7*

Denali AC *Support 8-0*

Restrict CSH participants to only hunting moose and caribou in Units 11, 12, and 13 for 2 years

TAKE NO ACTION

CSH Sub. Committee No Action 11-0

Paxson AC *Opposed 0-5*

Copper Basin AC *Opposed 0-7*

Denali AC *No action*

Increase CSH group size definition to “25 or more households”

NEUTRAL

CSH Sub. Committee Support 6-4

Current CSH group size definition:

“25 or more members”

Proposed CSH group size definition:

“25 or more households”

Paxson AC

Opposed 0-5

Copper Basin AC

Opposed 0-7

Denali AC

Support 8-0

Distribution of moose groups by number of households

	1 – 12 Households	13 - 24 Households	≥ 25 Households	Total Groups
2011	0	6	3	9
2012	5	11	3	19
2013	11	27	7	45
2014	6	30	7	43

Distribution of caribou groups by number of households

	1 – 12 Households	13 - 24 Households	≥ 25 Households	Total Groups
2011	0	4	2	6
2012	4	10	3	17
2013	4	16	8	28
2014	2	17	6	25

Increase CSH group size definition to “25 or more households”

NEUTRAL

CSH Sub. Committee Support 6-4

*Current CSH group size definition:
Proposed CSH group size definition:*

*“25 or more members”
“25 or more households”*

Paxson AC

Opposed 0-5

Copper Basin AC

Opposed 0-7

Denali AC

Support 8-0

**Add “individuals, households, and families” to CSH regulations when harvestable surplus exceeds ANS
and
change the starting date of the CSH moose hunt to
September 1**

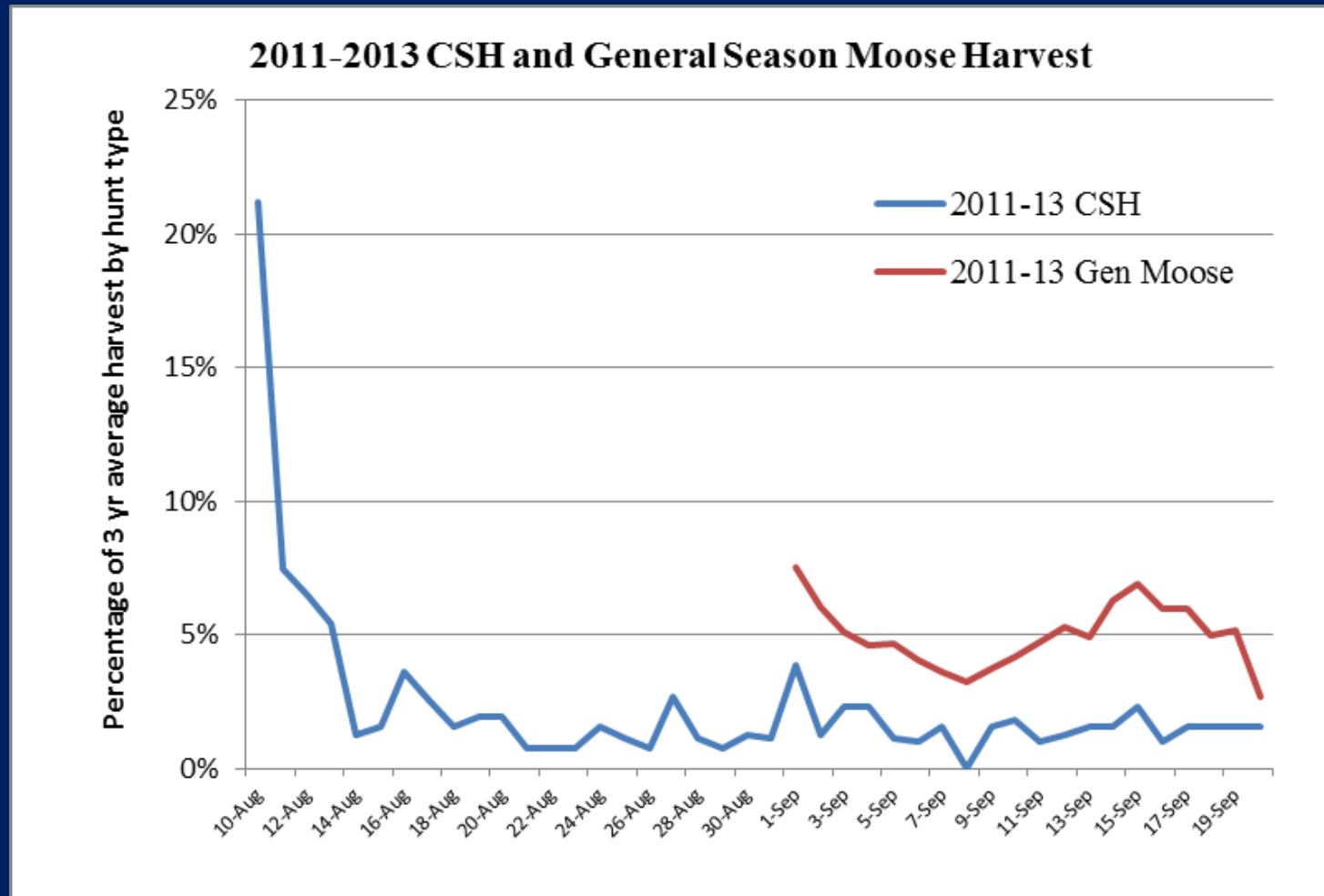
NEUTRAL

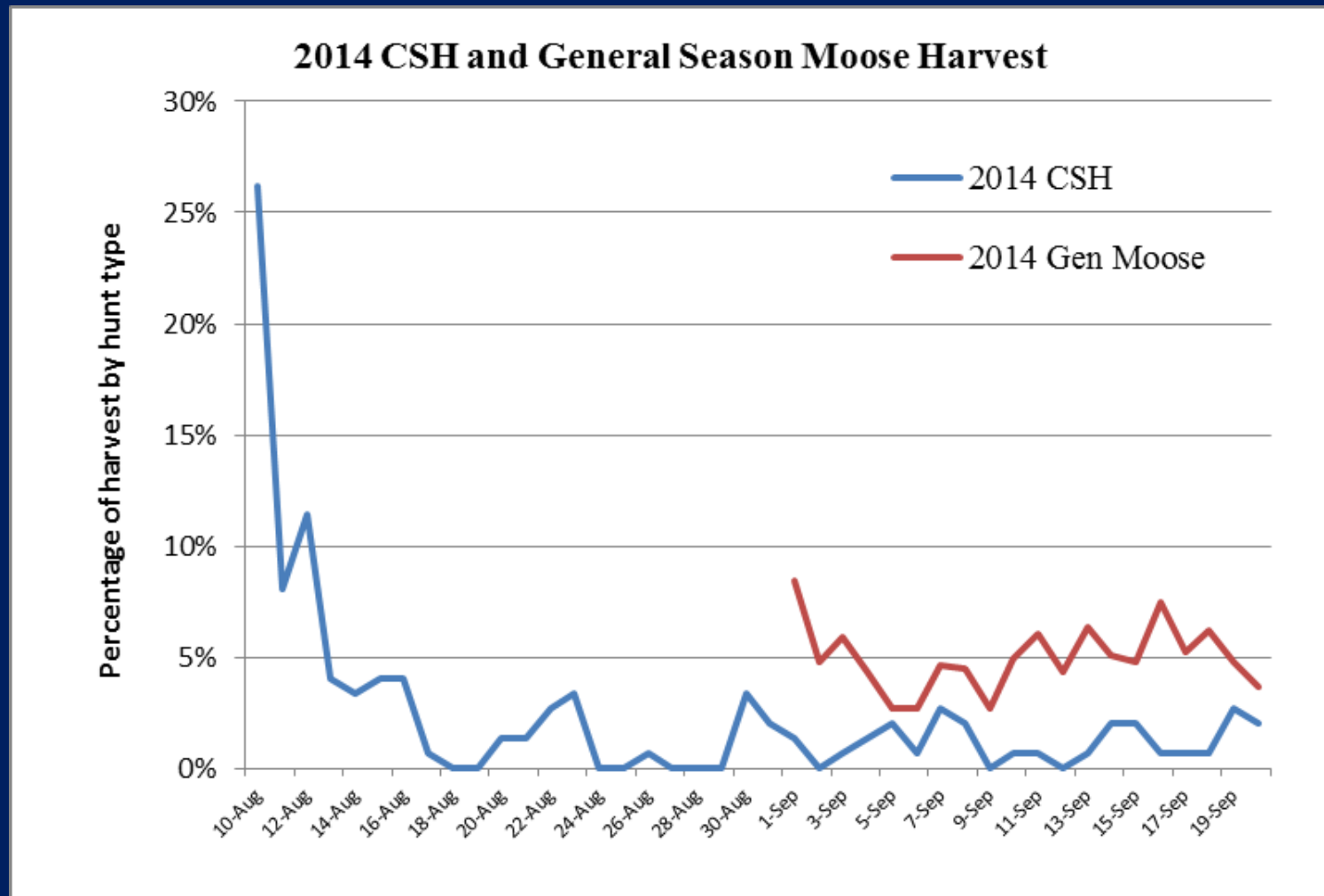
CSH Sub. Committee Opposed 5-6

Paxson AC *Opposed 0-5*

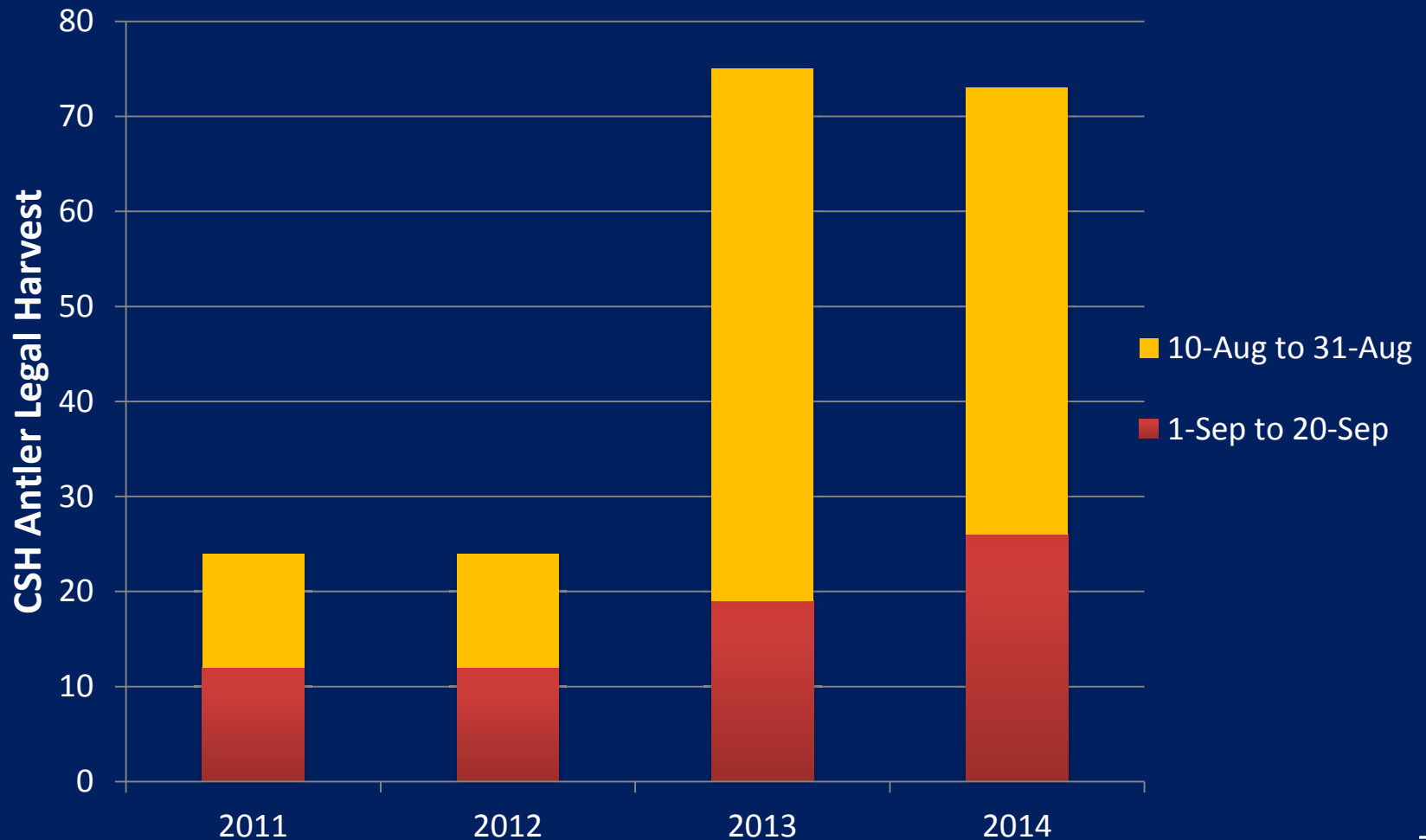
Copper Basin AC *Opposed 0-7*

Denali AC *No action*





Antler Legal Moose Harvested by CSH Hunters Prior to and After Sept 1.



**Add “individuals, households, and families” to CSH regulations when harvestable surplus exceeds ANS
and
change the starting date of the CSH moose hunt to
September 1**

NEUTRAL

CSH Sub. Committee Opposed 5-6

Paxson AC *Opposed 0-5*

Copper Basin AC *Opposed 0-7*

Denali AC *No action*

GMU 13 Moose Bag Limit History

Bull Moose Bag Limits GMU 13 1983-2014

Year	Resident General Hunt	Resident Draw Permit Hunt	Separate State Subsistence Hunt	Federal Subsistence Hunt
1983	Antler Restrictions	None	Any Bull by Drawing Permit Only	None
1984	Antler Restrictions	" "	Any Bull by Drawing Permit Only	" "
1986	Antler Restrictions	" "	Any Bull by Registration Permit Only	" "
1987	Antler Restrictions	" "	Any Bull by Registration Permit Only	" "
1988	Antler Restrictions	" "	Any Bull by Registration Permit Only	" "
1989	Antler Restrictions	" "	Any Bull by Registration Permit/Antler Restrictions 13A West	" "
1990	Antler Restrictions	" "	Tier II Hunt With Antler Restrictions/Tier II Winter Hunt	Any Bull
1991	Antler Restrictions	" "	None	Any Bull
1992	Antler Restrictions	" "	" "	Any Bull
1993	Antler Restrictions	" "	" "	Any Bull
1994	Antler Restrictions	" "	" "	Any Bull
1995	Antler Restrictions	" "	Any Bull by Tier II Permit Only	Any Bull
1996	Antler Restrictions	" "	Any Bull by Tier II Permit Only	Any Bull
1997	Antler Restrictions	" "	Any Bull by Tier II Permit Only	Any Bull
1998	Antler Restrictions	" "	Any Bull by Tier II Permit Only	Any Bull
1999	Antler Restrictions	" "	Any Bull by Tier II Permit Only	Any Bull
2000	Antler Restrictions	" "	Any Bull by Tier II Permit Only	Any Bull
2001	Antler Restrictions	" "	Any Bull by Tier II Permit Only	Any Bull
2002	Antler Restrictions	" "	Any Bull by Tier II Permit Only	Any Bull
2003	Antler Restrictions	" "	Any Bull by Tier II Permit Only	Any Bull
2004	Antler Restrictions	" "	Any Bull by Tier II Permit Only	Any Bull
2005	Antler Restrictions	" "	Any Bull by Tier II Permit Only	Any Bull
2006	Antler Restrictions	" "	Any Bull by Tier II Permit Only	Any Bull
2007	Antler Restrictions	" "	Any Bull by Tier II Permit Only	Any Bull
2008	Antler Restrictions	" "	Any Bull by Tier II Permit Only	Any Bull
2009	Antler Restrictions	Any Bull by Drawing Permit Only	Any Bull by Community Harvest Permit Only	Any Bull
2010	Antler Restrictions	Any Bull by Drawing Permit Only	None	Any Bull
2011	Antler Restrictions	Any Bull by Drawing Permit Only	Any Bull by Community Harvest Permit Only	Any Bull
2012	Antler Restrictions	Any Bull by Drawing Permit Only	Any Bull by Community Harvest Permit Only	Any Bull
2013	Antler Restrictions	Any Bull by Drawing Permit Only	Any Bull by Community Harvest Permit Only	Any Bull
2014	Antler Restrictions/Winter Any Bull by Registration Permit Only		Any Bull by Community Harvest Permit Only	Any Bull

Note: After the 1989 McDowell decision the "any" bull opportunity for subsistence hunting was provided through a Tier II hunt. This hunt was the subject of litigation (Alaska Dept. of Fish & Game v. Kluti Kaah Native Village of Copper Center) and the "any" bull option within the subsistence hunt was returned to continue to provide this opportunity.

**Add “individuals, households, and families” to CSH regulations when harvestable surplus exceeds ANS
and
change the starting date of the CSH moose hunt to
September 1**

NEUTRAL

CSH Sub. Committee Opposed 5-6

Paxson AC *Opposed 0-5*

Copper Basin AC *Opposed 0-7*

Denali AC *No action*

Add definitions for “community, individuals, families, or other social groups” to codified CSH regulations

NEUTRAL

CSH Sub. Committee Support 10-0

Paxson AC

Opposed 0-5

Copper Basin AC

Support 6-1

Denali AC

Support 8-0

Considerations

- The terms “community,” “individuals,” “families,” and “social groups” are used in board findings 2006-170 and 2011-184 (*GMU 13 subsistence uses of moose and caribou*)
- Terms are not defined in findings or in regulation
 - “Family” is defined in AS 16.05.940 (33)
- 5 AAC 92.072 provides opportunities to engage in and establish a “community-based pattern of use” of moose and caribou
- Tier I and general hunts provide opportunities for “individuals, families, and other social groups” to also participate in subsistence uses of GMU 13 moose and caribou

Individuals, families, and social groups

- Individual = a single person
- Family = many kinds, usually defined by kinship:
 - “nuclear family” “extended family”
- Social groups are varied (organized under different principles)
 - Include families and communities
 - Also clubs, teams, tribes, nations, unions, fraternities, sororities, etc.

Aspects of the meaning of “community”

- A group of people:
 - Living in the same locality
 - Probably not an option under current law
 - Having common interests
 - Having a common history
 - Having common values
- In addition, membership in a community:
 - May be relatively “durable”:
 - Has time depth and extends beyond a single event; not “ad hoc”
 - Is important to social identity and social practice

Examples of definitions for consideration

- Add to 5 AAC 92.072:
 - “For the purposes of this section, a ‘community’ is a group of people linked by a common interest in, and participation in uses of, a wildlife population that are consistent with the customary and traditional use patterns of that wildlife population as defined by the board.”

Examples of definitions, continued

- “For the purpose of this section, in board finding 2011-184-BOG, ‘individual’ means a single (one) person who is engaged in harvesting and using a wildlife resource for subsistence uses.”
- “For the purpose of this section, in board finding 2011-184-BOG, ‘social group’ means two or more people connected by a relationship of common interest in subsistence uses of a wildlife population.”

Also:

- Family is defined at AS 16.05.940 (33) as “persons related by blood, marriage, or adoption, and a person living in the household on a permanent basis.”

Add definitions for “community, individuals, families, or other social groups” to codified CSH regulations

NEUTRAL

CSH Sub. Committee Support 10-0

Paxson AC

Opposed 0-5

Copper Basin AC

Support 6-1

Denali AC

Support 8-0

Create a point and reporting system to determine if CSH participants are conforming to BOG findings (2006-170-BOG)

NEUTRAL

CSH Sub. Committee Support 6-5

Paxson AC

Opposed 0-5

Copper Basin AC

Support 7-0 w/admendment

Denali AC

Support 8-0

CSH hunt conditions and basis for written report review process

- CSH hunt conditions require that each group submit a written report describing the group's efforts to participate in a manner consistent with the customary and traditional use pattern described in board's findings (2006-170-BOG and 2011-184-BOG)
- Under 5 AAC 92.072 (f), the Department has authority to disapprove an application for a CSH permit if the community or group has not complied with (c)(1) [reporting requirements]
- In 2011, the Department developed an internal method to evaluate compliance with CSH hunt conditions based on written reports

CSH hunt conditions and report review process, continued

- CSH hunt conditions state that prior to a group's participation:
 - “Subscribers need not have already established the pattern of community use...by applying, subscribers will be certifying that they have read, understood, and will voluntarily attempt to participate in and establish the pattern of subsistence use described in the Unit 13 board findings...”
- The written report scoring process was designed to monitor group progress and evaluate compliance with hunt conditions
- CSH reports that failed to demonstrate progress in establishing the pattern are assigned “Conditional Approval” status
- Evaluation process has been internal to the Department
 - Evaluation statuses have not been reported to groups

Findings

- Many groups have submitted CSH written reports that consistently display full commitment to the board's intent in providing the hunt opportunity as described by board findings
- Several groups have made great efforts in producing high-quality, commendable CSH written reports, but still have failed to provide evidence of a commitment to all eight elements in board findings.
- Some groups have put very little effort into producing adequate written reports; they provide little evidence of commitment to board intent.

Challenge

- Subjective nature of written reports makes them difficult to analyze and score.
- Lower threshold of compliance is not clear.

Current form



Alaska Department of Fish and Game
Copper Basin MOOSE
Community Subsistence Harvest Permit
REPORT 2014-2015



GROUP _____ GROUP NUMBER _____
GROUP COORDINATOR _____

Per the conditions of your Copper Basin Moose Community Subsistence Harvest (CSH) Group/Community Permit, please complete this report, and return it to ADF&G Copper Basin CSH, Division of Subsistence, 333 Raspberry Rd., Anchorage, AK 99518-1565. If you have any questions, please contact us at (907) 267-2353.

This written report will serve as the summary of the group's 2014 moose hunt, harvest, and sharing activities in relation to the customary and traditional use pattern described in 2006-170-BOG (<http://www.adfg.alaska.gov/static/regulations/regprocess/gameboard/pdfs/finding/06170bog.pdf>). It is important to report as early as possible if your group would like to apply for next year's hunt. This completed report is due by February 27, 2015. Please note, 2015 groups will not be formally approved until a completed group report has been received.

Attach a summary narrative describing how the community or group observed the customary and traditional use pattern described in 2006-170-BOG. You must include a complete description of at least one meaningful communal sharing event, including the date, location, number of participants, amount of meat shared, and an overall description of the event. You are also encouraged to describe hunting scenarios where young hunters participated/harvested, traditional use scenarios in which certain parts of the animal were used, sharing scenarios where members of the community or group benefited from the CSH hunt, as well as any other issues or concerns you may have about this hunt or the administration of this hunt.

Summaries must include reference to each of the customary and traditional practices described in 2006-170-BOG. For convenience, these are summarized below. Reporting guidelines for each customary and traditional use pattern are also provided. These are suggestions meant to assist in reporting about these practices:

1. Participation in the consistent pattern of noncommercial taking, use, and reliance on Nelchina caribou, moose and other local wild foods. The existing pattern of use has been established over many generations and is focused on the total aggregate of fish, wildlife, and plant resources in the Copper Basin CSH area.
 - a) Describe how your hunt group has established, or made progress establishing, a generational pattern of use of wild resources in the Copper Basin.
 - b) Describe how your hunt group's pattern of use focuses on the total aggregate of fish, wildlife, and plant resources—not only the use of moose—in the Copper Basin.
2. Participation in the pattern of taking or use of wild resources from the Copper Basin CSH area that follows a seasonal use pattern of year-round harvest effort in the area, with harvests of moose and caribou by community members in both the fall and winter hunts, when legally permissible.

Current form, continued

- a) Describe the efforts to harvest, the harvest of, and the use of Copper Basin wild resources throughout the year by hunt group members during each of the following seasons:
 - Spring
 - Summer
 - Fall
 - Winter
3. Participation in the pattern of harvest or use of wild resources in the Copper Basin CSH area that includes methods and means of harvest characterized by efficiency and economy of effort and cost, especially taking advantage of the maximum opportunity to harvest, as efficiently as possible, a variety of usable species in the Copper Basin CSH area.
 - a) Describe your hunt group's efforts to participate in the CSH hunt in an efficient and economical manner. Efficiency can be demonstrated by describing:
 - Time spent in the field by each hunt group member household for each resource (provide months and dates)
 - Number of trips into the field by each hunt group member household for each resource
 - The means of transport into the field utilized by each hunt group member household for each resource
 4. Participation in the pattern of harvest or use of wild resources that occurs in the Copper Basin CSH area due to close ties to the area and a familiarity with the terrain and associated history of the Copper Basin CSH area.
 - a) Describe your hunt group's familiarity with the geography and the terrain of the Copper Basin area.
 - b) Describe your hunt group's historical ties and/or dependency to the Copper Basin area.
 5. Use of means of processing and preserving wild resources from the Copper Basin CSH area that have traditionally been used by past generations, including use of all of the parts required to be removed from the field under the terms of a Copper Basin Moose CSH permit.
 - a) Describe how your hunt group met the CSH salvage requirements for each moose harvested by the group.
 - b) List the parts removed from the field from each animal harvested and briefly describe how each part was processed, preserved, and/or consumed.
 6. Participation in the pattern of harvest or use of wild resources from the Copper Basin CSH area that includes the handing down of knowledge of hunting skills, values, and lore about the Copper Basin CSH area from generation to generation. The board considered it critical to the perpetuation of the customary and traditional use pattern to provide opportunities for people of all ages to participate in subsistence activities; the board also found it extremely important to stress the need to pass on skills and knowledge associated with use of all parts of the harvested animal.
 - a) Describe how the senior members of your hunt group gained knowledge of the Copper Basin and its wild resources during the past.
 - b) Describe the process by which your group is passing down knowledge of the Copper Basin, and the skill set needed to harvest wild resources in the Copper Basin, to hunt group members of the younger generations.
 - c) Describe hunting scenarios where young hunters participated/harvested wild resources in the Copper Basin and provide the number of young hunters participating in your hunt group.
 - d) Describe the process by which your hunt group is teaching the younger generations to salvage and use each of the parts of moose required to be removed from the field as a condition of the CSH hunt.

Current form, continued

7. Participation in the pattern of harvest or use of wild resources from the Copper Basin CSH area in which the harvest is shared throughout the community, including customary trade, barter, and gift-giving. In order to observe this pattern, a portion of the edible products of moose taken under the terms of a Copper Basin Moose CSH hunt should be primarily shared, in a meaningful way, with community or group members as named on the Copper Basin Moose CSH permit application. Hunters should also demonstrate a pattern of meaningful communal sharing that provides first for the needs of the community or group elders and disabled, as identified by the community or group. In addition, hunters who have harvested their first moose should give a portion to other members of the community or group.
 - a) Describe the pattern by which harvested moose were distributed within your community, including:
 - The approximate number of households which received a share of the harvest
 - The approximate number of elders and/or disabled community member households which received a share of the harvest
 - Describe the "1st Kill" sharing procedure followed, if applicable.

 8. Participation in the pattern that includes harvest, use, and reliance for subsistence purposes not only on Nelchina caribou and moose, but also on a wide variety of wild resources in the Copper Basin area.
 - a) Provide a list of the wild resources found in the Copper Basin which your hunt group uses, by species, for each of the following categories:
 - Large Game
 - Small Game
 - Salmon
 - Nonsalmon Fish
 - Birds
-

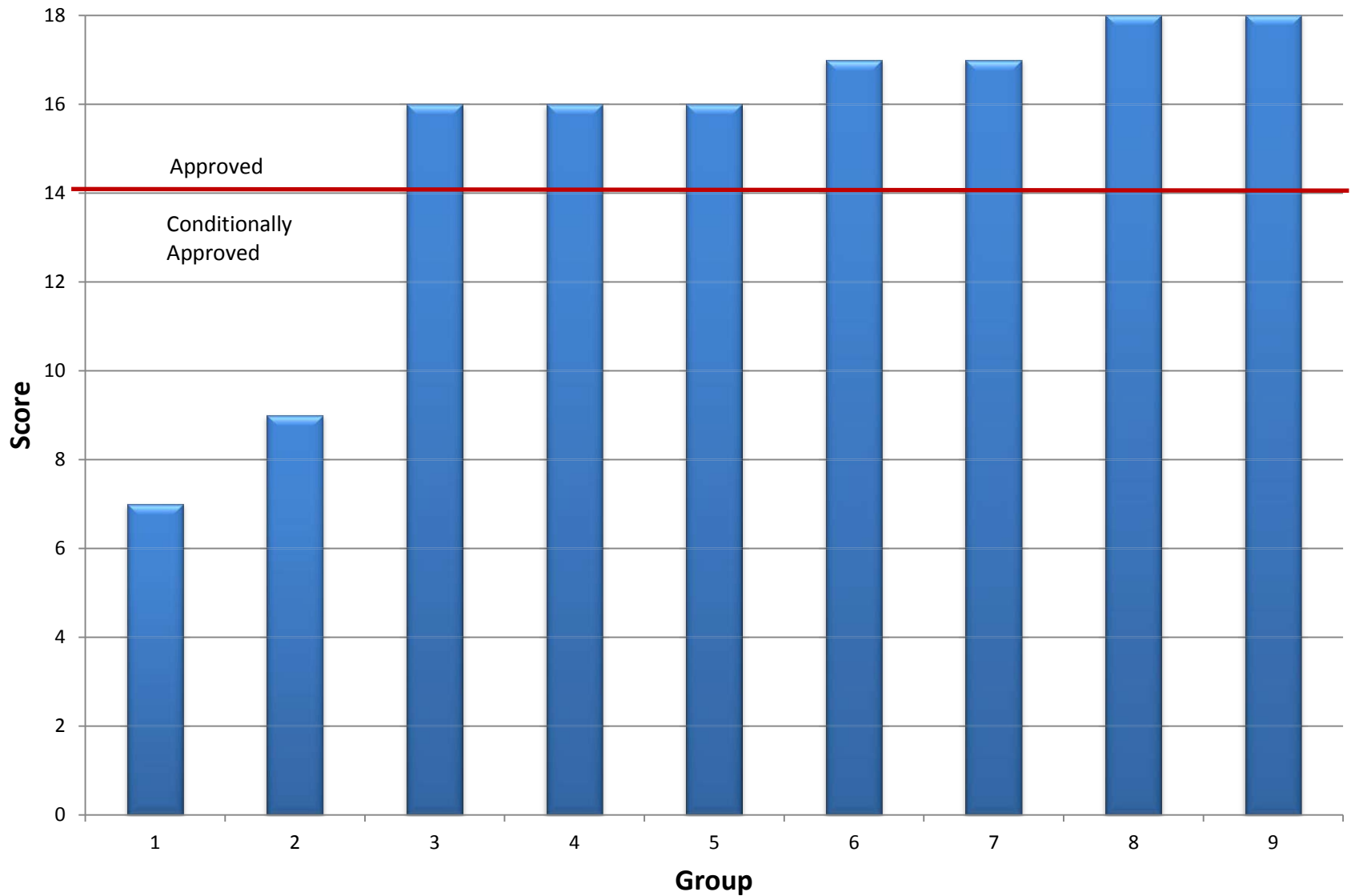
CSH written report analysis

- Each of the eight components in board findings are assessed by two measurements:
 - Was the customary and traditional use pattern demonstrated?
 - Was the reporting requirement met in writing?

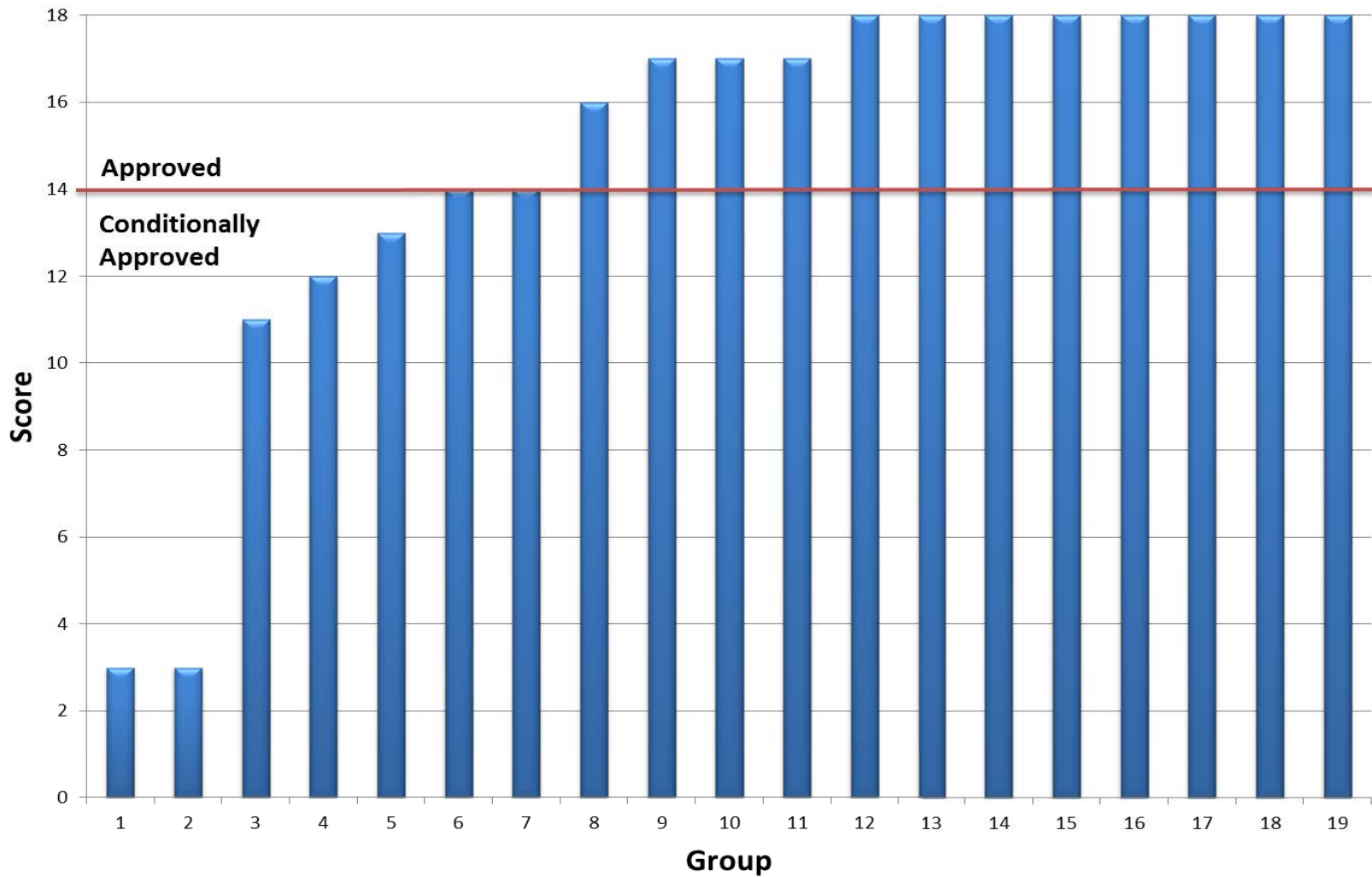
- A ninth field requires a description of the group’s meat sharing event
- 18 total points are possible
- A minimum of 14 points are required to receive a status of “Approval”
- Reports scoring fewer than 14 points receive “Conditional Approval” status

Criteria to measure and scoring of CSH written hunt reports	
Criteria	Scoring
1. Long term consistent pattern of use	2 pts
2. Seasonal pattern of harvests within unit	2 pts
3. Efficiency	2 pts
4. Close ties to and familiarity with the area	2 pts
5. Thorough use of parts of animal	2 pts
6. Handing down of knowledge and skills across generations	2 pts
7. Sharing within the community	4 pts
8. Use of wide variety of resources from the area	2 pts
Maximum Score Possible	18 pts
Minimum Score for Approval	14 pts

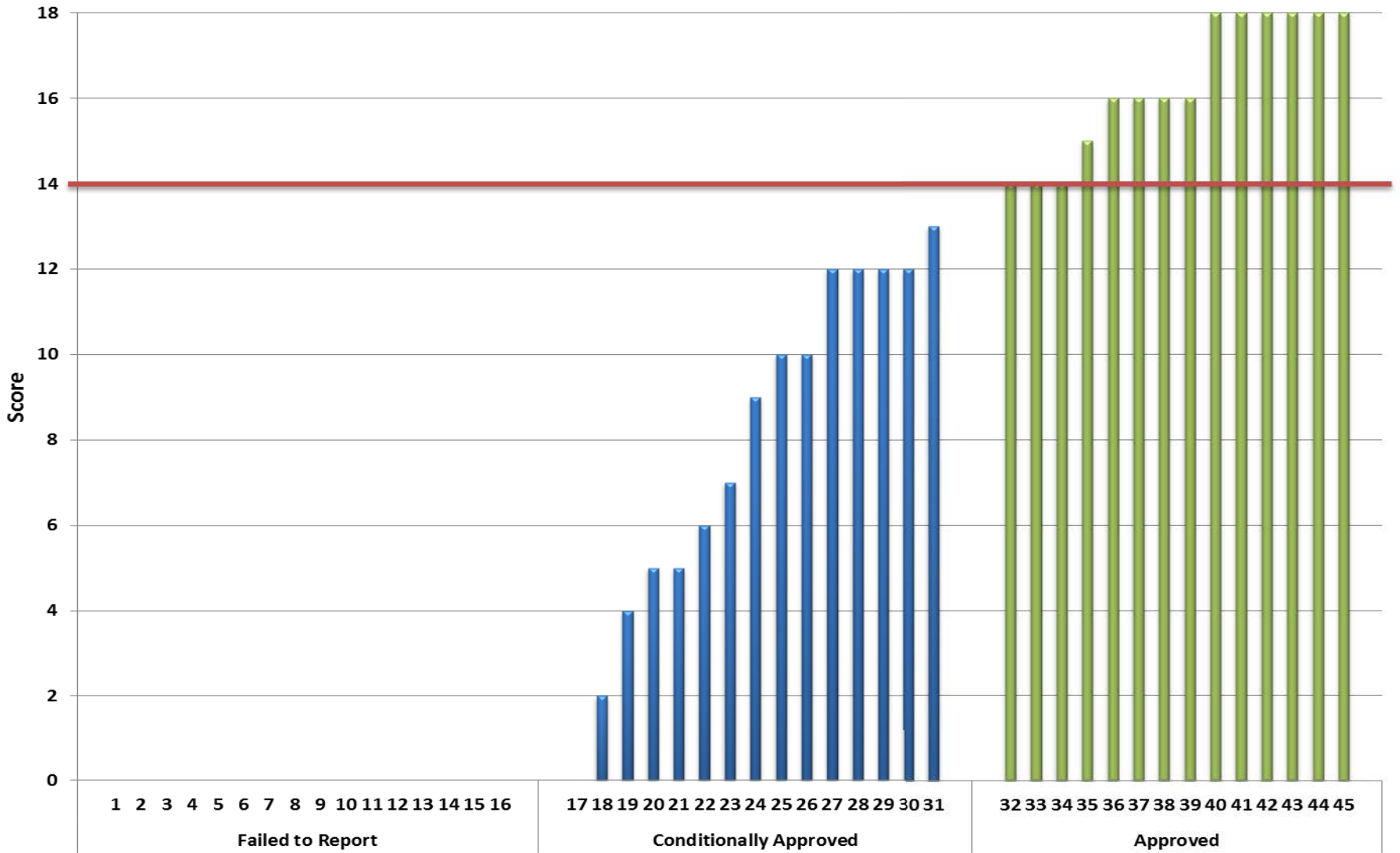
Variation in RY 2011-2012 CSH Moose Written Report Scores



Variation in RY 2012-2013 CSH Moose Written Report Scores



Variation in RY 2013-2014 CSH Moose Written Report Scores



Summary of current scoring analysis

- Regulatory Year 2011-2012
 - Caribou: 6 groups, 5 approved and 1 conditionally approved
 - 83% in compliance
 - Moose: 9 groups, 8 approved and 1 conditionally approved
 - 89% in compliance
- Regulatory Year 2012-2013
 - Caribou: 17 groups, 8 approved and 9 conditionally approved
 - 47% in compliance
 - Moose: 19 groups, 12 approved and 7 conditionally approved
 - 63% in compliance
- Regulatory Year 2013-2014
 - Caribou: 28 groups, reports not yet reviewed
 - Moose: 45 groups, 14 approved and 15 conditionally approved – **16 failed to report**

Findings: CSH group progress

- As CSH participation grows :
 - New groups are receiving the vast majority of “Conditional Approval” statuses
 - Some groups who received “Conditional Approval” status did not subscribe to the CSH the following year

Potential options

- Maintain current written report structure
- Implement objective questionnaire report format and assess results using a numerical threshold.
- In each case:
 - CSH groups should be informed about their annual report status.
 - Provide a defined threshold of approval.

Proposal 71 option: require a two-part report

- Community coordinator report: RC 16
 - Provides group/community summary information
 - Identifies patterns for the group as a whole
 - Mitigates possibly uneven household reports
- Household reports: RC 17
 - Provides detailed household information not readily available to group coordinator
 - Designed to be compiled with all other reporting households for a group
- Both questionnaires focus on direct quantitative or objective questions, designed to address one or more of the eight elements in 2006-170-BOG
- Proposal 71 provides the indicators that will be collected to measure each element – see RC # 18

Revised report scoring

- Detailed scoring advice document: RC16 and RC 17
 - Eliminates subjectivity
 - Provides unambiguous direction on assignment of points
 - Assigns points based on detailed criteria
 - If condition criteria are met, 100% of points for the question/criteria are assigned
- Criteria based on percentages as often as possible
- Household report not scored independently
- Proposed community coordinator report has maximum of 29 points
- Proposed household coordinator report has maximum of 41 points
- Proposal 71 suggests that each of the eight elements be weighted equally:
 - However, board may choose to weigh certain elements higher than others

Sample Question #1

- From the community coordinator report (RC 16, page 2):
 - 13.) Except for elder households, how many households without hunters were given moose in 2013?
 - Purpose: In part address Element 7 in the board finding, which identifies moose being shared among households unable to obtain moose on their own for any reason
 - Sample score: For a community responding that 2 households received moose, a score of 1 point will be assigned

Sample Question #2

- From the household report (RC 17, page 2):
 - 12.) Who processed the meat your household harvested? _____
 - Purpose: In part to address Element 3 in the board finding, which is that given the cost of wild game processing, real cost savings can be achieved by processing game at home and with others

Sample Question #2, continued

- Sample Score:
 - HH 1: commercial processor
 - HH 2: commercial processor
 - HH 3: other community member and commercial processor
 - HH 4: family member
 - HH 5: family member
 - 1 point will be awarded to this community, because a “significant portion” (greater than 50%, and in this case 60%) used methods other than commercial processors, but more than 50% used a commercial processor

Additional Considerations

- Would be implemented for 2015/16 season
- Groups would receive feedback from department
- Recommend that the department administer this process for minimum of 3 years before using scores in regulatory process

Create a point and reporting system to determine if CSH participants are conforming to BOG findings (2006-170-BOG)

NEUTRAL

CSH Sub. Committee Support 6-5

Paxson AC

Opposed 0-5

Copper Basin AC

Support 7-0 w/admendment

Denali AC

Support 8-0

Establish a point system to determine CSH group eligibility and lower the minimum number of members to 20

NEUTRAL

CSH Sub. Committee Opposed 1-10

Paxson AC *Opposed 0-5*

Copper Basin AC *Opposed 0-7*

Denali AC *No action*

To qualify:

Communities must be composed of at least 20 members

Communities must average 22 points or better

Current scoring criteria

- 1. How many years have you used the resource you are applying for?**
- 2. How many days during each year do you spend hunting/fishing/gathering within the hunt area?**
- 3. How far do you have to travel to reach the hunt area?**
- 4. In which community do you purchase most of your fuel?**
- 5. In which community do you purchase most of your food?**

Establish a point system to determine CSH group eligibility and lower the minimum number of members to 20

NEUTRAL

CSH Sub. Committee Opposed 1-10

Paxson AC *Opposed 0-5*

Copper Basin AC *Opposed 0-7*

Denali AC *No action*

Require RC566 permit holders to submit a post-season hunt report to verify a pattern of subsistence

NEUTRAL

CSH Sub. Committee Opposed 4-5

Paxson AC *Opposed 0-5*

Copper Basin AC *Opposed 0-7*

Denali AC *No action*

Number of RC566 permits issued annually and resulting harvest

Year	Permits	Harvest
2009	500	277
2010	1,151	615
2011	3,148	1,626
2012	5,045	2,542
2013	6,880	1,573

Reporting requirements:

- **Use of a wide diversity of resources from the area**
- **A pattern of use that spans several seasons**
- **Close ties and familiarity of the area including the existence and development of a long-term pattern of use**
- **Some degree of sharing outside of the household**
- **Incorporation of handing down knowledge through the generations**

Require RC566 permit holders to submit a post-season hunt report to verify a pattern of subsistence

NEUTRAL

CSH Sub. Committee Opposed 4-5

Paxson AC *Opposed 0-5*

Copper Basin AC *Opposed 0-7*

Denali AC *No action*

Require all CSH hunt groups to be pre-approved by the Board of Game

NEUTRAL

CSH Sub. Committee Support 7-4

Paxson AC

Opposed 0-5

Copper Basin AC

Support 7-0

Denali AC

No action

Effect/process if adopted

- 1. The Division of Subsistence would develop a group application process.**
- 2. The Division of Subsistence would review and comment on the completeness and content of the application.**
- 3. The board would review and approve or reject the applications annually during its work session.**

4. Each group coordinator would be given an opportunity to provide public comments.

This process would need to occur at a regularly scheduled board meeting or at a special board work session a year prior to the hunt so that groups would be approved for the November-December application period.

Require all CSH hunt groups to be pre-approved by the Board of Game

NEUTRAL

CSH Sub. Committee Support 7-4

Paxson AC

Opposed 0-5

Copper Basin AC

Support 7-0

Denali AC

No action

**Require all moose antlers harvested under the CSH hunt
to be immediately brought in to a Fish and Game office
and
add a antler destruction requirement**

OPPOSED

CSH Sub. Committee Support 6-5

Paxson AC *Opposed 0-5*

Copper Basin AC *Opposed 0-7*

Denali AC *Support 6-2*

Number of moose harvested during the CSH hunt in Units 11 and 13

Year	Total Number of Moose Harvested
2009	100
2010	*
2011	91
2012	101
2013	162
2014	150

*** The community hunt was not offered in regulatory year 2010**

Considerations:

- 1. No ADF&G office in Cantwell**
- 2. ADF&G would have to establish a check station in Cantwell**
- 3. Check-station staffing**
- 4. Costs to hunters (meat spoilage, time, money)**

Require all moose antlers harvested under the CSH hunt to be immediately brought in to a Fish and Game office and add a antler destruction requirement

OPPOSED

CSH Sub. Committee Support 6-5

Paxson AC *Opposed 0-5*

Copper Basin AC *Opposed 0-7*

Denali AC *Support 6-2*

Require antlers from moose harvested under the CSH hunt to be turned into Fish and Game

NEUTRAL

CSH Sub. Committee No Action 11-0

Paxson AC *Opposed 0-5*

Copper Basin AC *Opposed 0-7*

Denali AC *Opposed 2-6*

Establish a firm any-bull quota for each Unit 13 subunit

NEUTRAL

CSH Sub. Committee Support 8-2

Paxson AC *Opposed 0-5*

Copper Basin AC *Opposed 0-7*

Denali AC *Support 8-0*

Community Subsistence Harvest numbers and quotas.

Unit	2012		2013		2014	
	Quota	Harvest	Quota	Harvest	Quota	Harvest
13A	12	15*	16	42*	6	8*
13B	17	23*	26	23*	26	25*
13C	10	14*	16	1*	16	9
13D	8	8*	11	7*	11	13*
13E	13	16*	21	12*	21	21*
11Z	10	0*	10	0*	10	0
<i>Total</i>	<i>70</i>	<i>76</i>	<i>100</i>	<i>85</i>	<i>90</i>	<i>76</i>

* Bag limit changed by EO

Establish a firm any-bull quota for each Unit 13 subunit

NEUTRAL

CSH Sub. Committee Support 8-2

Paxson AC *Opposed 0-5*

Copper Basin AC *Opposed 0-7*

Denali AC *Support 8-0*

Modify reporting requirements for the CSH moose hunt to within 12 or 24hrs of harvest

SUPPORT

CSH Sub. Committee Support 10-0

Paxson AC *Opposed 0-5*

Copper Basin AC *Opposed 0-7*

Denali AC *Support 8-0*

CSH successful reporting time frame prior to 2013:

Within 5 days from returning from field

Current successful CSH reporting time frame:

Within 24hrs

Proposed CSH reporting time frame:

12 or 24hrs

CSH any-bull quotas, harvest, and EO closure dates

Unit	2012			2013			2014		
	Quota	Harvest	EO	Quota	Harvest	EO	Quota	Harvest	EO
13A	12	15	8/15	16	42	8/14	6	8	8/14
13B	17	23	9/3	26	23	8/16	26	25	8/26
13C	10	14	9/17	16	1	8/16	16	9	-
13D	8	8	8/28	11	7	8/16	11	13	8/31
13E	13	16	9/13	21	12	8/16	21	21	8/15
11Z	10	0	9/17	10	0	8/16	10	0	-
<i>Total</i>	<i>70</i>	<i>76</i>		<i>100</i>	<i>85</i>		<i>90</i>	<i>76</i>	

Modify reporting requirements for the CSH moose hunt to within 12 or 24hrs of harvest

SUPPORT

CSH Sub. Committee Support 10-0

Paxson AC *Opposed 0-5*

Copper Basin AC *Opposed 0-7*

Denali AC *Support 8-0*

Open and close the CSH moose hunt on certain days

NEUTRAL

CSH Sub. Committee Support 7-4

Paxson AC

Opposed 0-5

Copper Basin AC

Opposed 0-7

Denali AC

No action

**Prohibit the use of motorized vehicles in Units 11, portions of 12 and 13 during August 18-22 and August 25-28 for moose hunting
and
change the starting date of the CSH hunt to August 18**

NEUTRAL

CSH Sub. Committee

Opposed 1-7

Paxson AC

Opposed 0-5

Copper Basin AC

Opposed 0-7

Denali AC

Opposed 0-8

Current CSH moose hunt starting date:

August 10 – September 20
December 1 – December 31

Proposed CSH moose hunt starting date:

August 18 – September 20
December 1 – December 31

Motor vehicle considerations:

- 1. Enforcement issues**
- 2. Delay harvest reporting**
- 3. Care of game meat**

**Prohibit the use of motorized vehicles in Units 11, portions of 12 and 13 during August 18-22 and August 25-28 for moose hunting
and
change the starting date of the CSH hunt to August 18**

NEUTRAL

CSH Sub. Committee

Opposed 1-7

Paxson AC

Opposed 0-5

Copper Basin AC

Opposed 0-7

Denali AC

Opposed 0-8

Prohibit the take of moose and caribou for 24hrs after the use of an off-road vehicle by CSH hunters from August 18-31

NEUTRAL

CSH Sub. Committee Opposed 0-9

Paxson AC *Opposed 0-5*

Copper Basin AC *Opposed 0-7*

Denali AC *Opposed 0-8*

Keep the CSH caribou hunt open as long as the CSH allocation of 300 and overall harvest quotas are not exceeded

NEUTRAL

CSH Sub. Committee Support 10-0

Paxson AC *Opposed 0-5*

Copper Basin AC *Support 7-0*

Denali AC *No action*

Nelchina caribou harvest by participants in the CSH program

Harvest			
Regulatory Year	Total	CSH Allocation	EO Closure Date
2009	127	300	-
2011	87	300	December 6
2012	150	300	-
2013	114	300	October 10
2014	139	300	*

*** Hunt still open**

Keep the CSH caribou hunt open as long as the CSH allocation of 300 and overall harvest quotas are not exceeded

NEUTRAL

CSH Sub. Committee Support 10-0

Paxson AC *Opposed 0-5*

Copper Basin AC *Support 7-0*

Denali AC *No action*

**Discontinue the CSH moose hunt when harvestable surplus exceeds ANS
and
replace with a resident only weighted draw while increasing non-resident permits to 250**

NEUTRAL

CHS Sub. Committee Opposed 4-7

Paxson AC *Opposed 0-5*

Copper Basin AC *Opposed 0-7*

Denali AC *No action*

Weighted draw system:

A. Those drawn in previous years for the same drawing permit hunt are not drawn again until all other applicants who keep applying for the specific drawing hunt have been drawn

B. New drawing applicants rise up in preference by accumulating years of consistent applying

**Discontinue the CSH moose hunt when harvestable surplus exceeds ANS
and
replace with a resident only weighted draw while increasing
non-resident permits to 250**

NEUTRAL

CHS Sub. Committee Opposed 4-7

Paxson AC *Opposed 0-5*

Copper Basin AC *Opposed 0-7*

Denali AC *No action*

Change the “any-bull” hunt in Unit 13 to a weighted drawing hunt when above ANS

Public proposal

NEUTRAL

Paxson AC

Support w/Amendments 5-0

Copper Basin AC

Opposed 0-7

Denali AC

No vote

Current CSH moose hunting regulations:

CSH moose (CSH- CM300/CM301)	August 10 – September 20 December 1 – December 31	One bull
-----------------------------------------	--------------------------------------------------------------	-----------------

Weighted draw:

A. Once you are drawn you go to the bottom of the applicant list for the drawing hunt and cycle back to the top over years of continued applying

Change the “any-bull” hunt in Unit 13 to a weighted drawing hunt when above ANS

Public proposal

NEUTRAL

Paxson AC

Support w/Amendments 5-0

Copper Basin AC

Opposed 0-7

Denali AC

No vote

Eliminate CSH caribou hunt and allow Tier I and Tier II permit holders to pool permits

Public proposal

NEUTRAL

Paxson AC *Opposed 0-5*

Copper Basin AC *Opposed 0-7*

Denali AC *No vote*

Current Unit 13 caribou regulations:

**Drawing Caribou
(DC480-483)** **August 20 – September 20;
October 21 – March 31** **One caribou per person**

**Tier I Registration
(RC566)** **August 10 – September 20;
October 21 – March 31** **One caribou per household**

**Tier I CSH caribou
(CC001)** **August 10 – September 20;
October 21 – March 31** **One caribou per household**

**Eliminate CSH caribou hunt
and
allow Tier I and Tier II permit holders to
pool permits**

Public proposal

NEUTRAL

Paxson AC

Opposed 0-5

Copper Basin AC

Opposed 0-7

Denali AC

No vote

Remove restriction that Tier I caribou hunters can only hunt moose in Unit 13

Public proposal

OPPOSED

Paxson AC

Support 5-0

Copper Basin AC

Opposed 0-7

Denali AC

No vote

Calculate ANS annually for Unit 13 based on verifiable data from each hunter application

Public proposal

NEUTRAL

Paxson AC

Opposed 0-5

Copper Basin AC

Opposed 0-7

Denali AC

No vote

Proposed formula for ANS calculation:

- 1. Years hunted, received, and eaten fish and wildlife for human food for each big game species.**
- 2. Total amount of subsistence resources acquired over each year for up to 60 years.**
- 3. Number of family members and friends that shared annual subsistence harvest over the last 3 years.**

Management considerations:

1. Workload

2. Criteria for scoring guidance

3. None of the data is “verifiable”

Calculate ANS annually for Unit 13 based on verifiable data from each hunter application

Public proposal

NEUTRAL

Paxson AC

Opposed 0-5

Copper Basin AC

Opposed 0-7

Denali AC

No vote

Change scoring procedures for all Tier II subsistence hunt applicants in Unit 13

Public proposal

NEUTRAL

Paxson AC

Opposed 0-5

Copper Basin AC

Opposed 0-7

Denali AC

No vote

Current Tier II scoring criteria:

- 1. How many years have YOU hunted or eaten meat from the Tier II population for which you are applying?**
- 2. What is the maximum number of years any one living member of your household, has hunted or eaten meat from the Tier II population you are applying for?**
- 3. Within the Tier II hunt area, how many days did you, the applicant, spend hunting and fishing during the past regulatory years?**

Current Tier II scoring criteria:

4. Over the past year, in what community did you buy most of your food?

5. Over the past year, in what community did you buy most of your gasoline?

Change scoring procedures for all Tier II subsistence hunt applicants in Unit 13

Public proposal

NEUTRAL

Paxson AC

Opposed 0-5

Copper Basin AC

Opposed 0-7

Denali AC

No vote

Convert DG720 to a registration hunt in Unit 13D

Public proposal

OPPOSED

Paxson AC

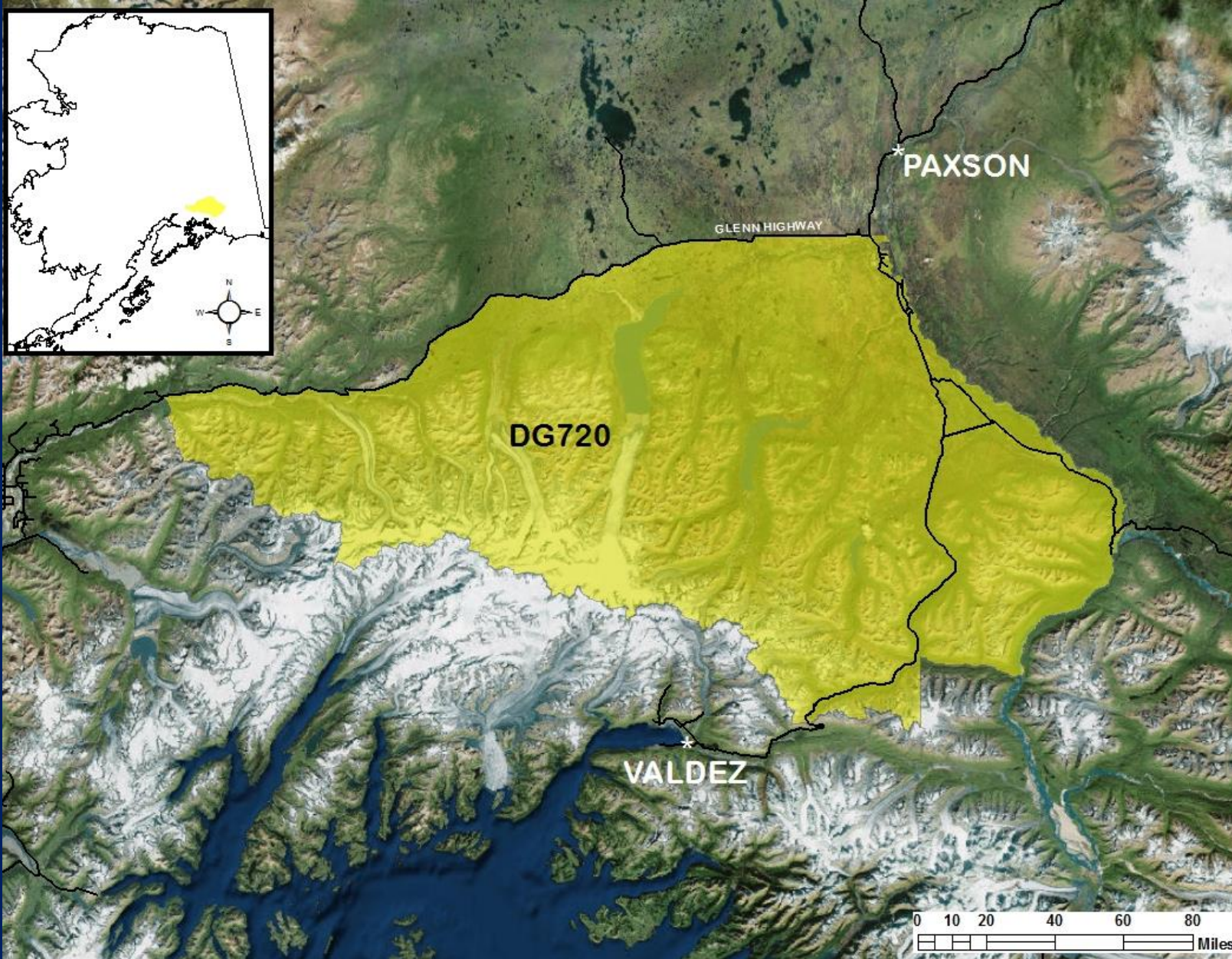
Opposed 0-5

Copper Basin AC

Opposed 0-7

Denali AC

No vote



Hunt statistics for the Unit 13D drawing goat permit (DG720) and harvest

Year	Applicants	Permits	Hunted	Harvest
2009	372	35	16	8
2010	506	35	11	2
2011	573	35	14	8
2012	474	35	15	3
2013	492	50	22	10

Convert DG720 to a registration hunt in Unit 13D

Public proposal

OPPOSED

Paxson AC

Opposed 0-5

Copper Basin AC

Opposed 0-7

Denali AC

No vote

**Combine the Unit 13D goat drawing hunt (DG720)
with the Unit 11 and 13 registration hunt (RG580)
and
align season with the registration hunt dates**

Public proposal

OPPOSED

Paxson AC

Opposed 0-5

Copper Basin AC

Opposed 0-7

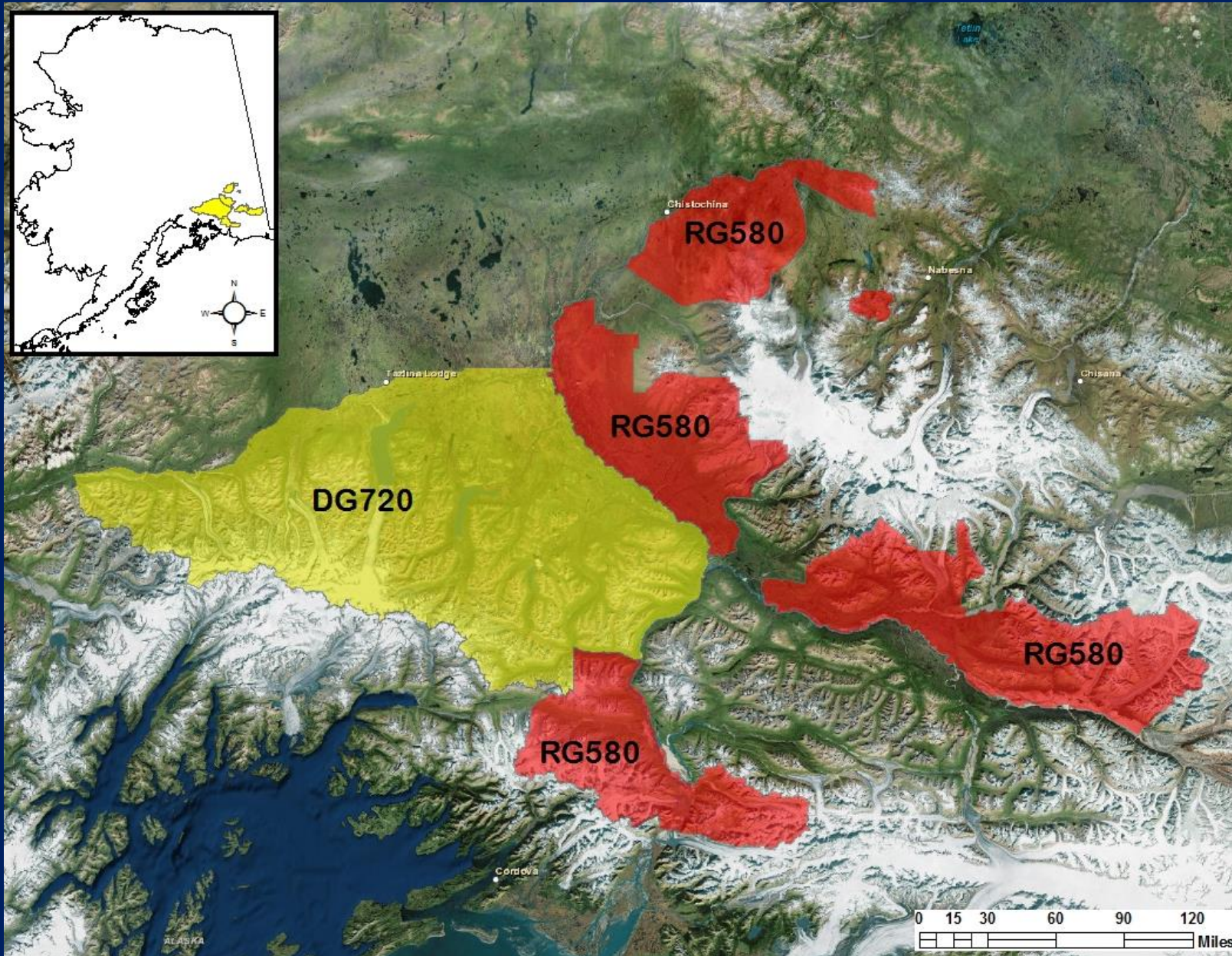
Denali AC

No vote

Current goat season dates:

RG580	September 1 – November 30
-------	---------------------------

DG720	August 10 – September 20
-------	--------------------------



**Combine the Unit 13D goat drawing hunt (DG720)
with the Unit 11 and 13 registration hunt (RG580)
and
align season with the registration hunt dates**

Public proposal

OPPOSED

Paxson AC

Opposed 0-5

Copper Basin AC

Opposed 0-7

Denali AC

No vote

Change the season for DG720 in Unit 13D to August 10-November 30

Public proposal

NEUTRAL

Current DG720 season: August 10 – September 20

Proposed DG720 season: August 10 – November 30

or

August 10 – October 31

Paxson AC

Opposed 0-5

Copper Basin AC

Opposed 0-7

Denali AC

No vote



Chronology of DG720 goat harvest by hunt week

	August 10-11	August 12-18	August 19-25	August 26- September 1	September 2- 8	September 9-15	September 16-22
2011	0	1	1	3	0	3	0
2012	1	0	1	0	1	0	0
2013	0	0	2	2	4	1	1
2014	1	0	2	3	0	0	0

Change the season for DG720 in Unit 13D to August 10-November 30

Public proposal

NEUTRAL

Current DG720 season: August 10 – September 20

Proposed DG720 season: August 10 – November 30

or

August 10 – October 31

Paxson AC

Opposed 0-5

Copper Basin AC

Opposed 0-7

Denali AC

No vote

Allow the take of brown bear over bait in all of Units 11 and 13

Public proposal

NEUTRAL

Paxson AC

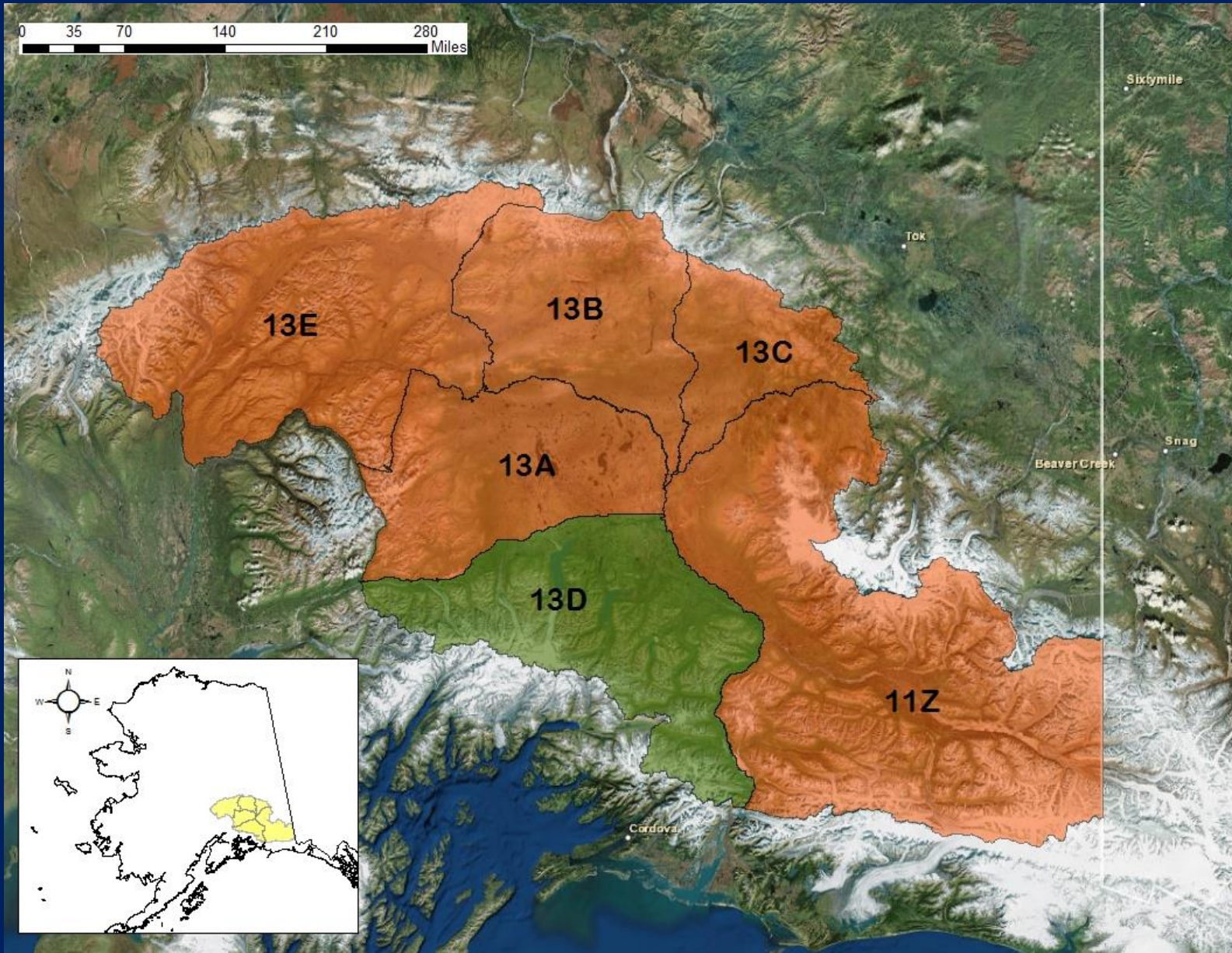
Opposed 0-5

Copper Basin AC

Opposed 0-7

Denali AC

No vote



Number of registered bear baiting stations in Units 13 and 11

	2004	2005	2006	2007	2008	2009	2010	2011	2012	2013
13A	10	7	8	9	17	20	14	22	11	17
13B	2	5	0	1	2	3	1	3	1	1
13C	8	7	4	5	3	7	6	4	4	8
13D	54	37	47	70	58	83	62	95	107	139
13E	37	36	18	21	29	28	31	29	30	25
11	2	7	13	17	14	14	11	16	6	6
<i>Total</i>	<i>113</i>	<i>99</i>	<i>90</i>	<i>123</i>	<i>123</i>	<i>155</i>	<i>125</i>	<i>169</i>	<i>159</i>	<i>196</i>

Units 13 and 11 brown bear harvest 2009-2013

	2009	2010	2011	2012	2013
13A	23	34	19	24	28
13B	25	18	18	20	22
13C	12	2	5	12	8
13D	23	27	21	25	55
13E	51	56	56	48	46
11	26	18	15	20	15
<i>Total</i>	<i>160</i>	<i>155</i>	<i>134</i>	<i>149</i>	<i>174</i>

Chronology of brown bear harvest in Unit 13D

	Fall	Spring	Total
2009	18	5	23
2010	16	11	27
2011	11	10	21
2012	13	12	25
2013	23	32*	55

***First year of spring brown bear take over bait**

Allow the take of brown bear over bait in all of Units 11 and 13

Public proposal

NEUTRAL

Paxson AC

Opposed 0-5

Copper Basin AC

Opposed 0-7

Denali AC

No vote

Create a fall black and brown bear baiting season in Unit 13D from August 25–October 15

Mat-Valley AC proposal

NEUTRAL

Paxson AC

Opposed 0-5

Copper Basin AC

Opposed 0-7

Denali AC

No vote

Current bear baiting regulations:

Black bear	April 15–June 30	
Brown bear	April 15–June 30	13D Only

Proposed bear baiting regulations:

Black bear	April 15–June 30; <u>August 25–October 15</u>	
Brown bear	April 15–Jun 30; <u>August 25–October 15</u>	13D Only

Chronology of black bear harvest in Unit 13D

	Fall	Spring	Total
2009	13	63	76
2010	23	67	90
2011	11	47	58
2012	16	33	50*
2013	10	59	69

***Date of harvest unknown for one bear**

Chronology of brown bear harvest in Unit 13D

	Fall	Spring	Total
2009	18	5	23
2010	16	11	27
2011	11	10	21
2012	13	12	25
2013	23	32*	55

***First year of spring brown bear take over bait**

Create a fall black and brown bear baiting season in Unit 13D from August 25–October 15

Mat-Valley AC proposal

NEUTRAL

Paxson AC

Opposed 0-5

Copper Basin AC

Opposed 0-7

Denali AC

No vote

Proposal 95:

**Reinstating the winter ptarmigan season in GMU 13B,
Delaying the season start date, and a
Non-hunting corridor along the Denali and Richardson
highways**

RC: 2, Tab: 6

AC Proposal

ADF&G

Neutral

Advisory Committees:

SUPPORT

Paxson (5-0)

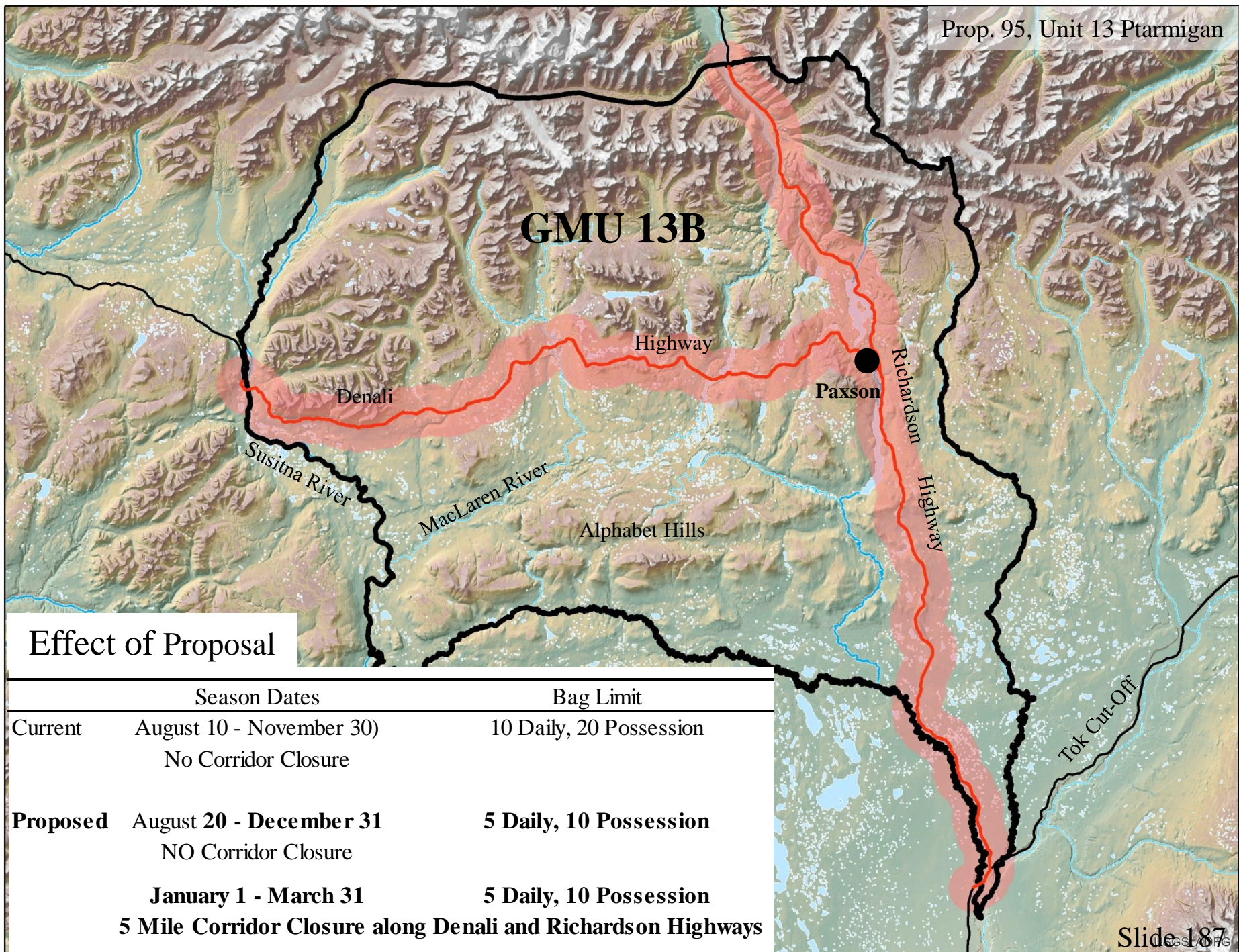
Denali (6-0) w/admendments

OPPOSE

Anchorage

Copper Basin (0-7)

Mat Valley (0-13)



Effect of Proposal

	Season Dates	Bag Limit
Current	August 10 - November 30) No Corridor Closure	10 Daily, 20 Possession
Proposed	August 20 - December 31 NO Corridor Closure	5 Daily, 10 Possession
	January 1 - March 31 5 Mile Corridor Closure along Denali and Richardson Highways	5 Daily, 10 Possession

Subunit 13B Ptarmigan

1. Juveniles body size
2. Harvest – average 1 ptarmigan / hunter / day
3. Corridor – force effort 2.5 miles from roadway

Subunit 13B Ptarmigan

1. Currently, no conservation concern
2. Late winter harvest - additive mortality
3. Evaluating effects of fall only harvest

Proposal 95:

**Reinstating the winter ptarmigan season in GMU 13B,
Delaying the season start date, and a
Non-hunting corridor along the Denali and Richardson
highways**

RC: 2, Tab: 6

AC Proposal

ADF&G

Neutral

Advisory Committees:

SUPPORT

Paxson (5-0)

Denali (6-0) w/admendments

OPPOSE

Anchorage

Copper Basin (0-7)

Mat Valley (0-13)