

Wood Bison Management Plan For Lower Innoko/Yukon River in Westcentral Alaska 2015-2020



Alaska Wood Bison Planning
Management Team

Why make a management plan?

Special Federal (NEP) rule states:

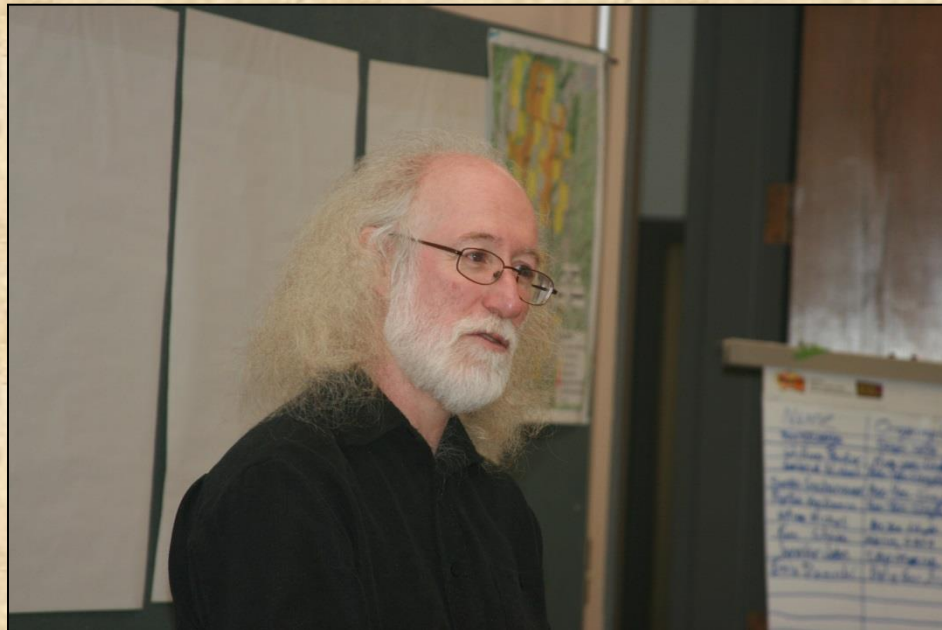
- ADF&G use public planning processes to develop plan
- Representatives from
 - Local communities, and landowners
 - Regional population centers
 - Native interests
 - Wildlife conservation interests
 - Industry
 - State and Federal agencies

ADF&G invited 29 groups to participate in developing a plan. 28 accepted.



Alaska Wood Bison Management Planning Team 3

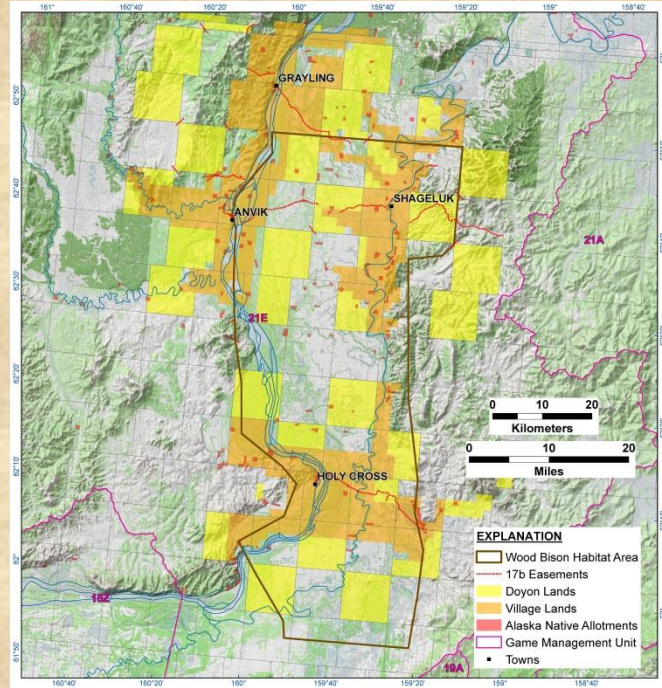
Dr. Alistair Bath from Memorial University, Newfoundland, Canada, facilitated three 2-day sessions in which the Team developed the Plan



Key components of the Plan

Seven Goals

1. Establish a herd in the lower Innoko/Yukon River area.
 - No population number cap at onset
 - Separation between wood bison & plains bison



Key components of the Plan

Seven Goals

2. Ensure adequate staffing and funding for all phases of wood bison management.
 - Drawing permit application fees to be put toward management program



Key components of the Plan

Seven Goals (continued)

3. Minimize conflicts between humans and wood bison.
 - Identify concerns & share information
 - Establish procedures and training to deal with problem bison

Key components of the Plan

Seven Goals (continued)

4. Encourage cooperation among land managers to ensure reasonable, standardized land use to access bison.
 - Four village landowner corporations agreed one common fee for land use.
 - Zero for shareholders
 - \$300 Alaska residents
 - \$500–\$1500 nonresidents
 - Scholarship trust fund
 - Doyon meeting in March to address land use



Key components of the Plan

Seven Goals (continued)

5. Manage harvest allocation to equitably benefit local resident, nonlocal resident, and nonresident hunters.
 - Begin harvest when harvestable surplus of 20 animals
 - 20% registration permits issued in four GASH villages
 - 80% drawing permits to residents and nonresidents
 - Not more than 10% to nonresidents

Key components of the Plan

Seven Goals (continued)

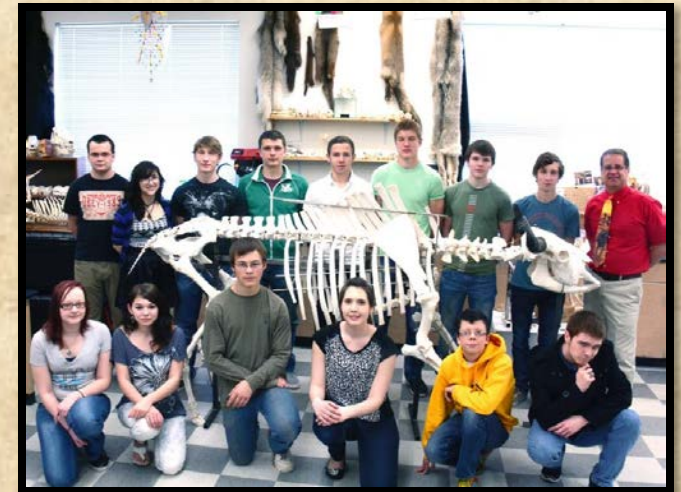
6. Minimize wood bison impact on other wildlife species and the ecosystem on which they depend.
- Collar and closely monitor
 - Other wildlife surveys as necessary



Key components of the Plan

Seven Goals (continued)

7. Ensure continuing communication among all user groups.
 - Regular updates
 - Educational opportunities



Thank you.



