



# ***Kenai Peninsula GMUs 7&15***

## ***Soldotna***

***Technicians: Larry Lewis and Kurt Strausbaugh***

***Area Biologist: Jeff Selinger***

***Administrative Asst.: Lynn Smith***

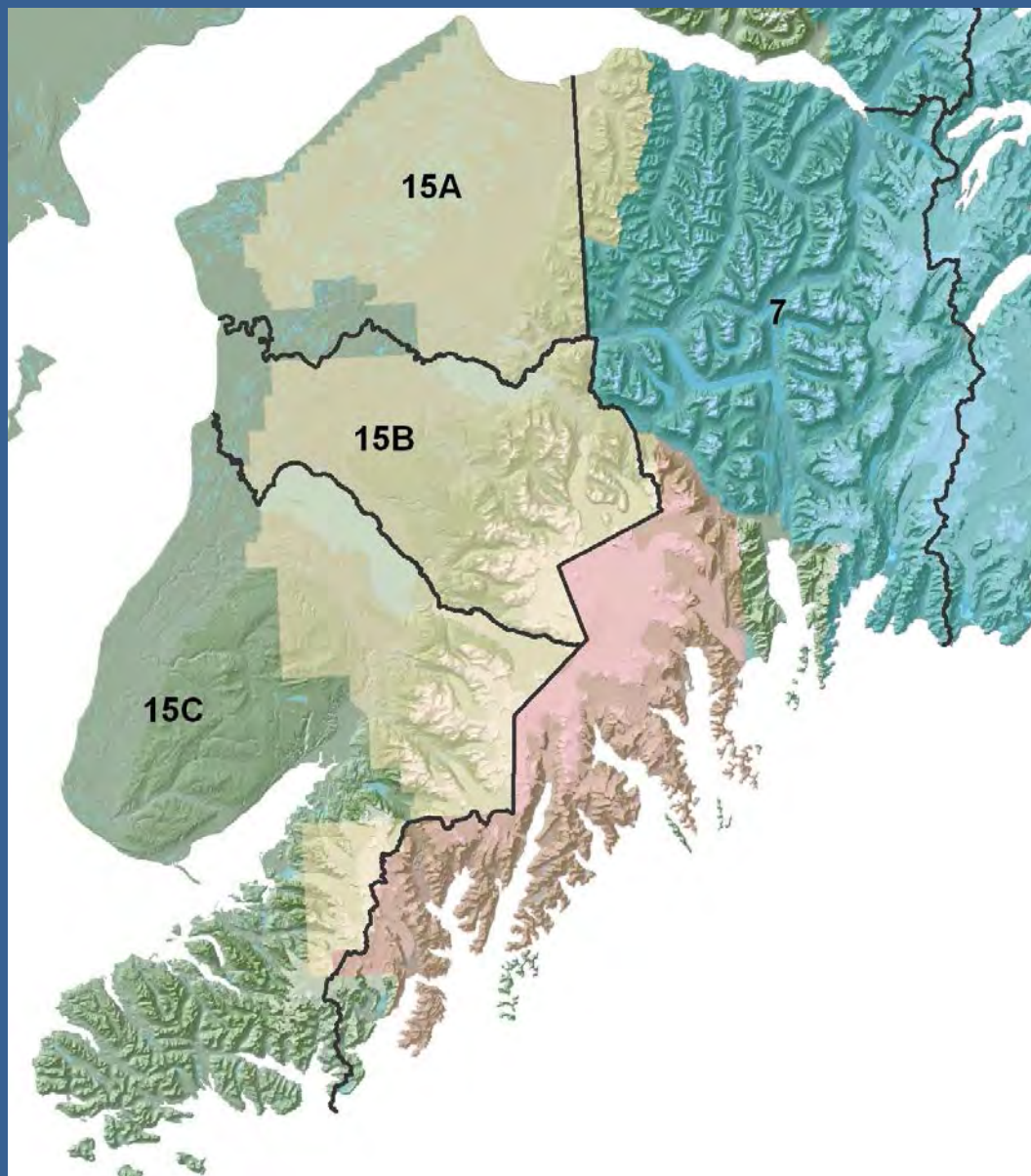
## ***Homer***

***Asst. Area Biologist: Jason Herreman***

***Research Biologist: Thomas McDonough***

***Administrative Asst.: Marnee Beverage***

# Kenai Peninsula GMUs 7 & 15



- 8,400 miles<sup>2</sup>
- Land ownership
  - ▶ 71% Federal
  - ▶ 29% State/Private/Borough/Native
- Human Population
  - ▶ >50,000

# Furbearers

- Wolf louse infestation (1982)
- 4<sup>th</sup> year of lynx trapping season
- Ave 317 lynx each year (high: 456)
  
- Two Furbearer proposals

# Furbearer average yearly harvest (2007/08 – 2011/12)

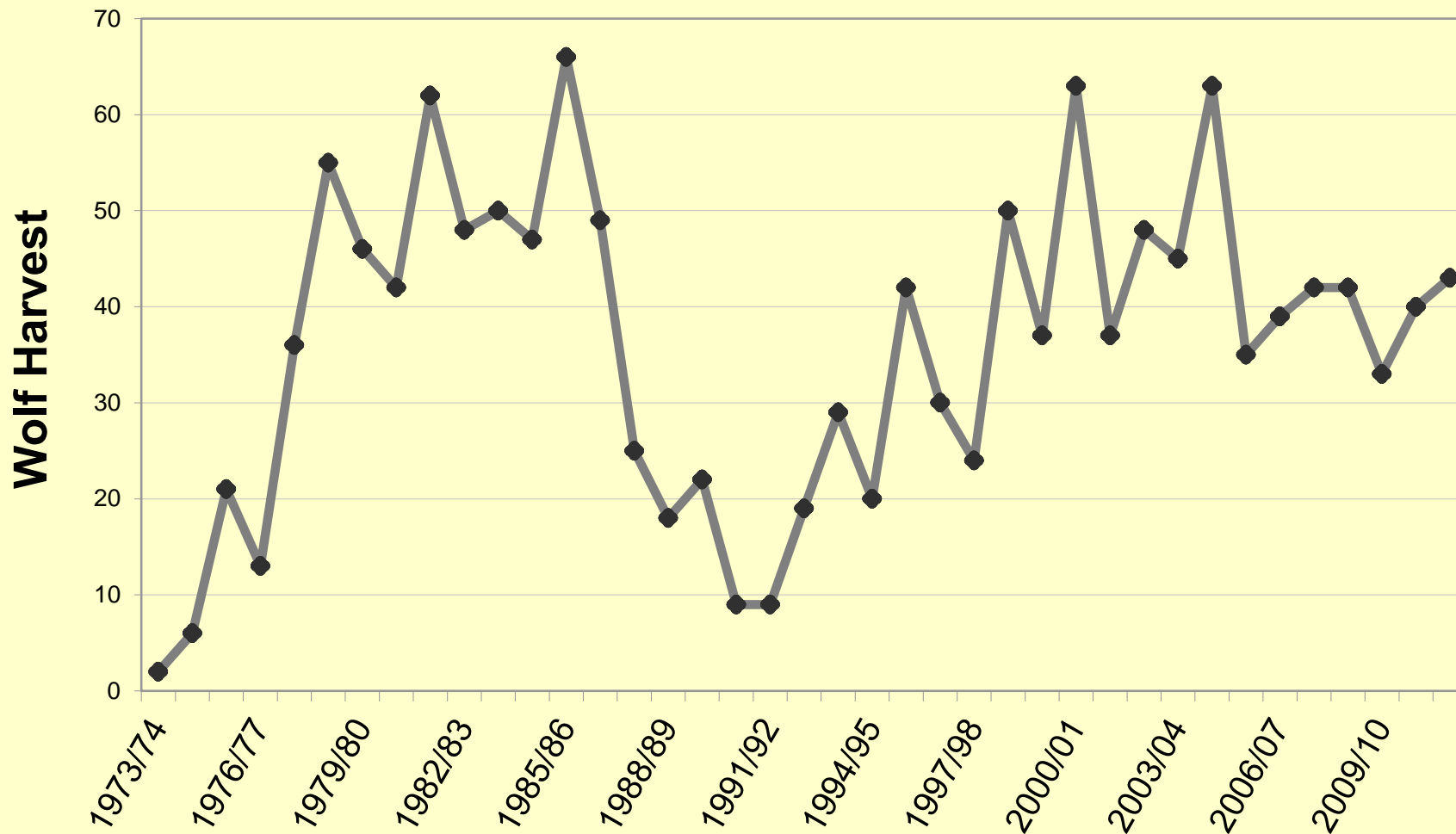
- Marten: 130
- Beaver: 80
- Wolverine: 15
- Otter: 45
- Wolf: 40

# Wolves

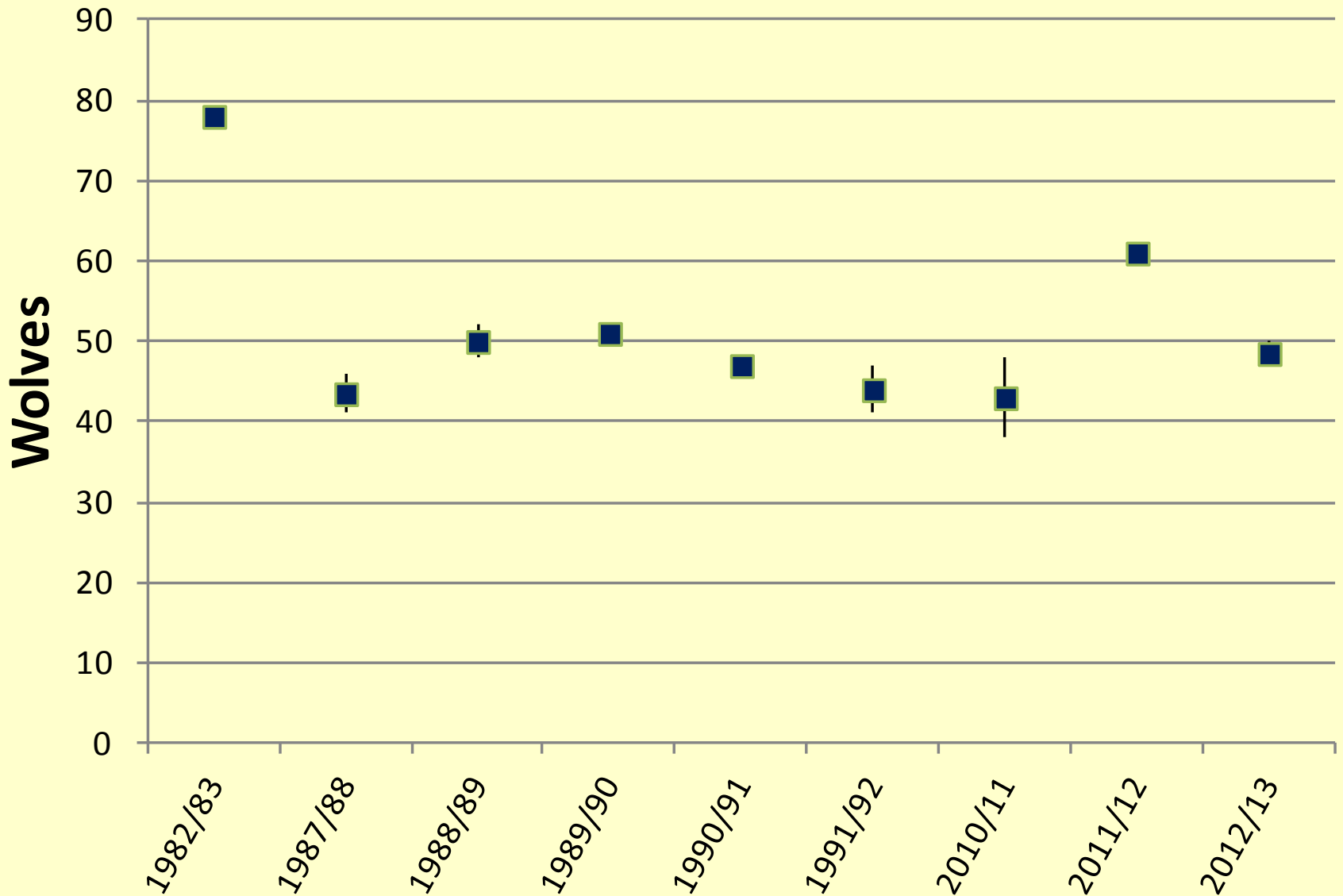
- Extirpated from Kenai around 1915
- Population re-established in the 1960s
- Closed seasons from 1962-1973
- Trapping opened in 1974
- Kenai-wide range by 1975
- Lice infestation in 1982



## Wolf Harvest in GMUs 7 & 15 1973/74 - 2011/12



# GMU 15A Wolf Trend Counts



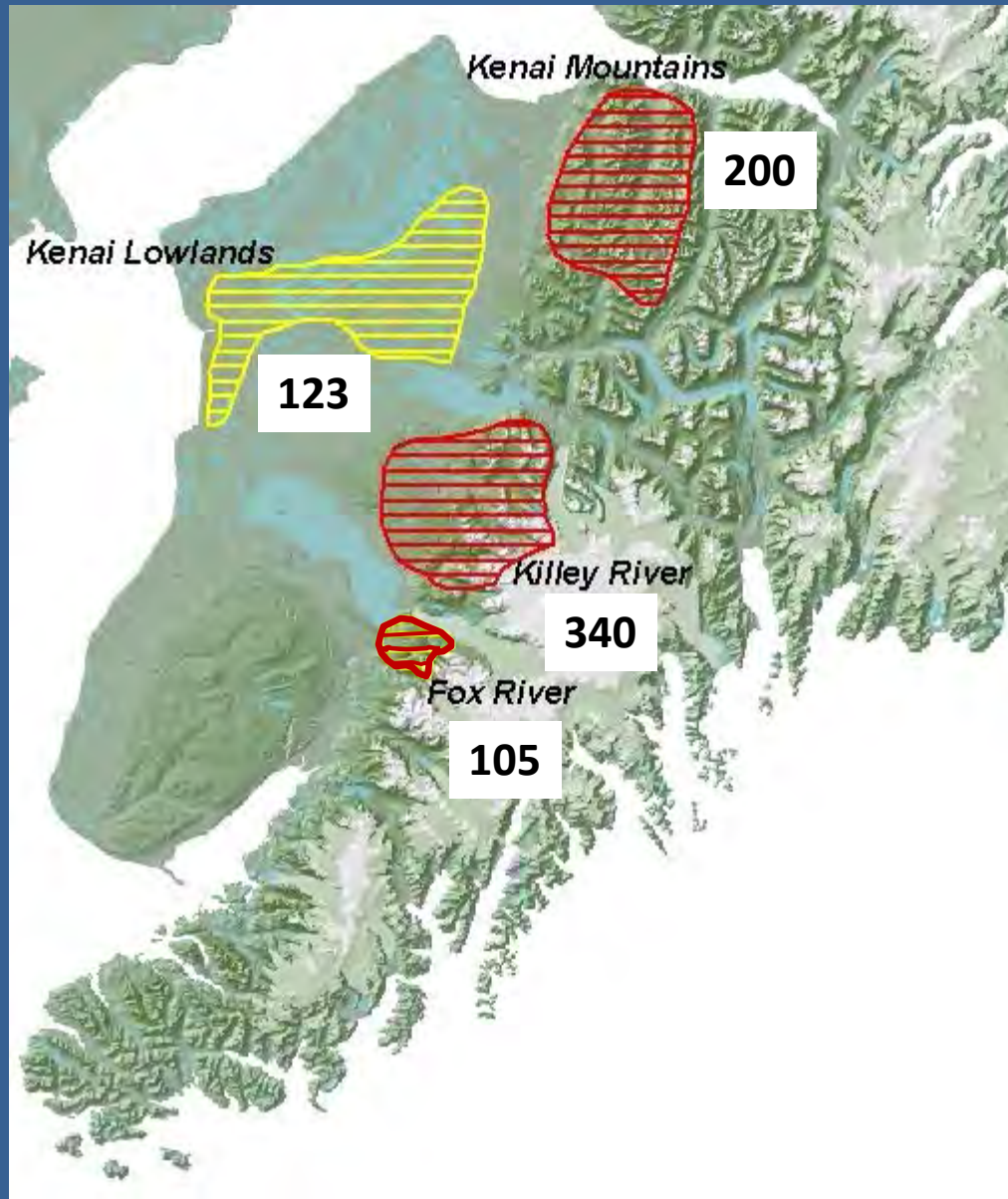
# Caribou

- 4 small herds
- All were reintroduced
- No caribou proposals





# Kenai Peninsula Caribou Herds

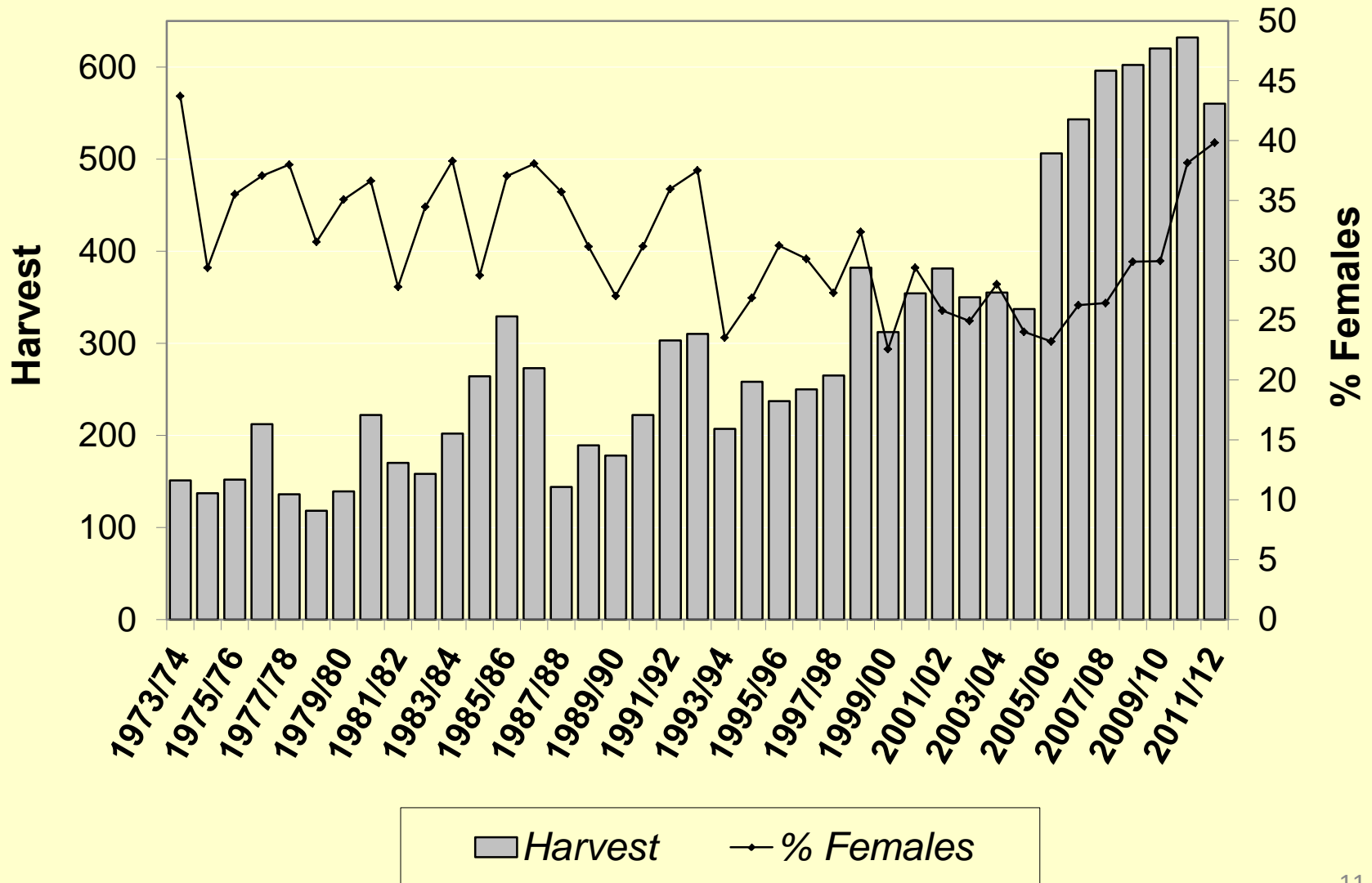


# Black Bears

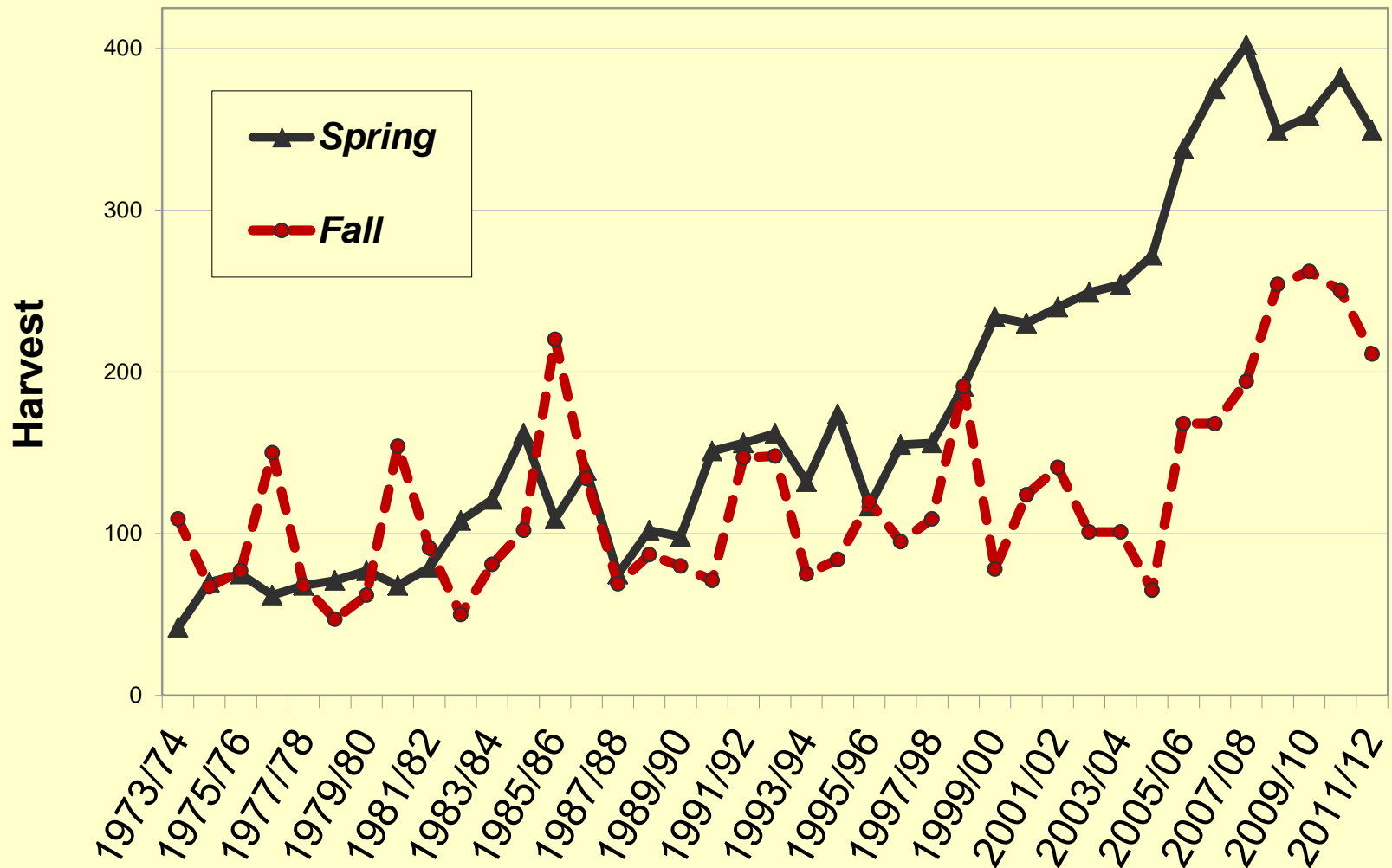


- Population size: >3000
- Increasing harvest
- 2 black bear proposals

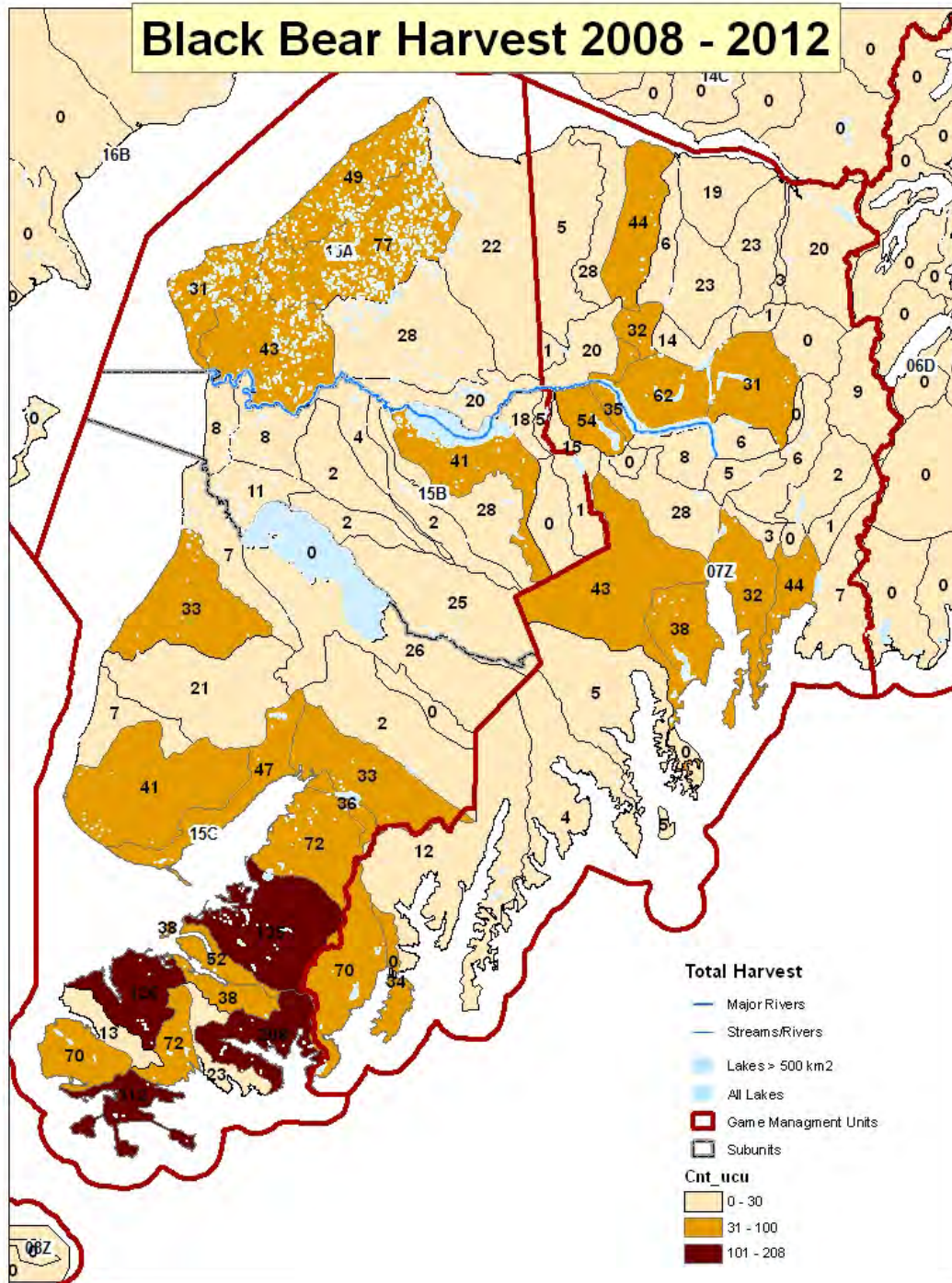
# Black Bear Harvest and % Females in GMUs 7 & 15 (1973/74 - 2011/12)



# Black Bear Harvest in GMUs 7&15 1973/74 - 2011/12



# Black Bear Harvest 2008 - 2012

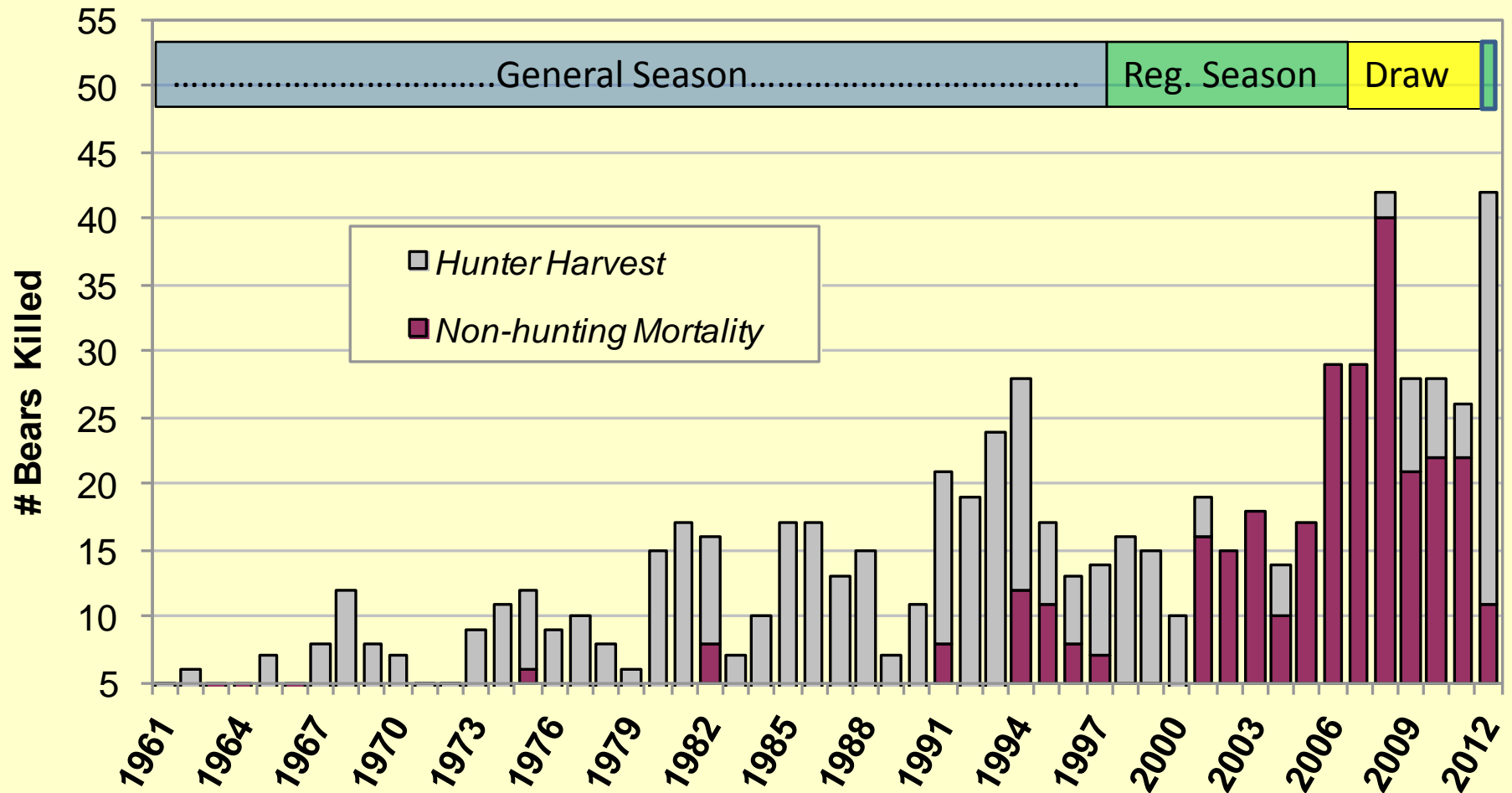


# Brown Bears

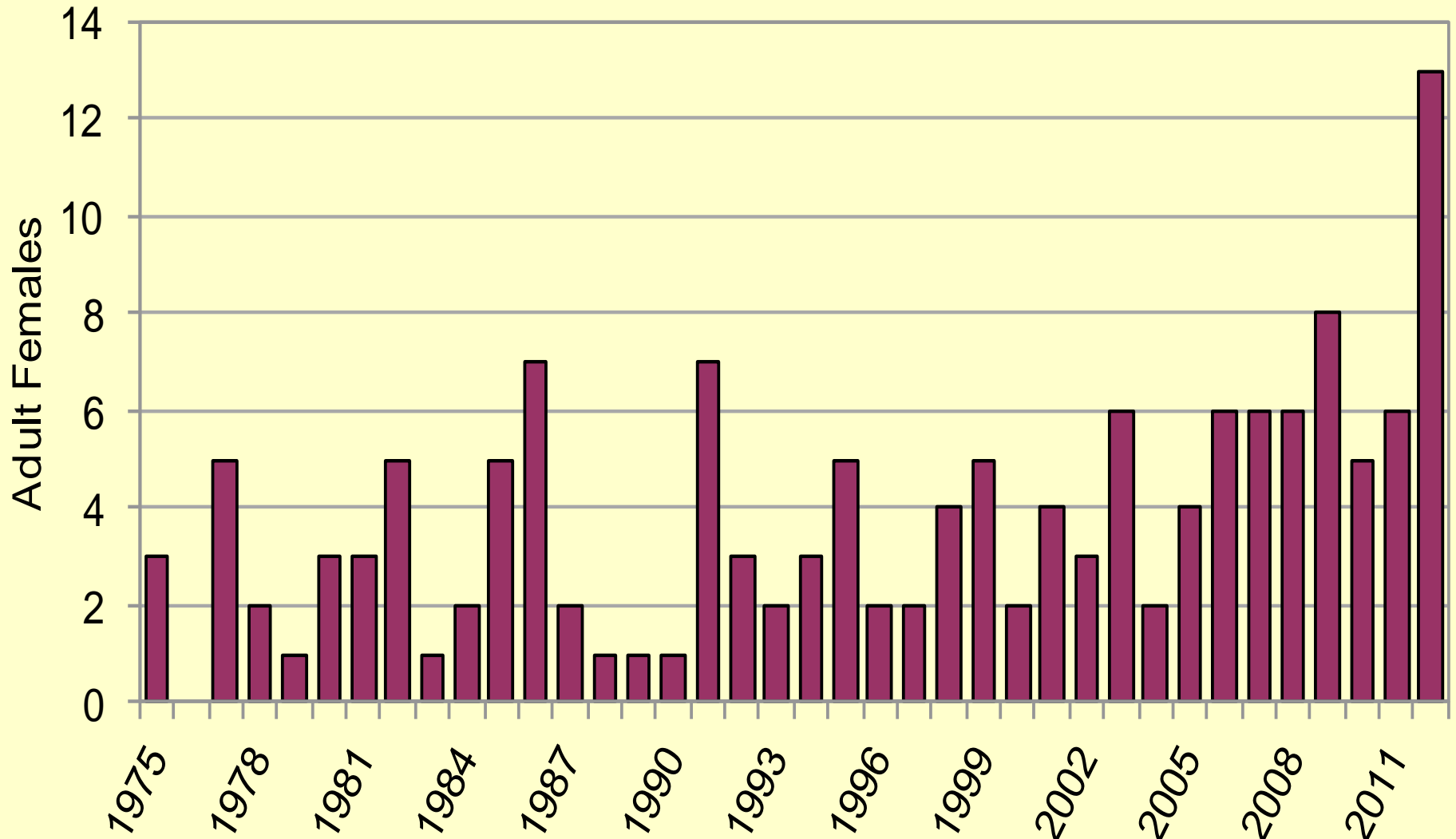
- Listed as a Population of Special Concern in 1998
- As of 2011, the State no longer maintains a Species of Special Concern List
- Hunt via registration permits
- 5 brown bear proposals



# Human-caused brown bear mortalities in GMUs 7 & 15, 1961-2012



# Adult Female Brown Bear Mortality ( $\geq 5$ years old) in GMUs 7 & 15, 1975-2012





# Wildlife Conservation Community Program

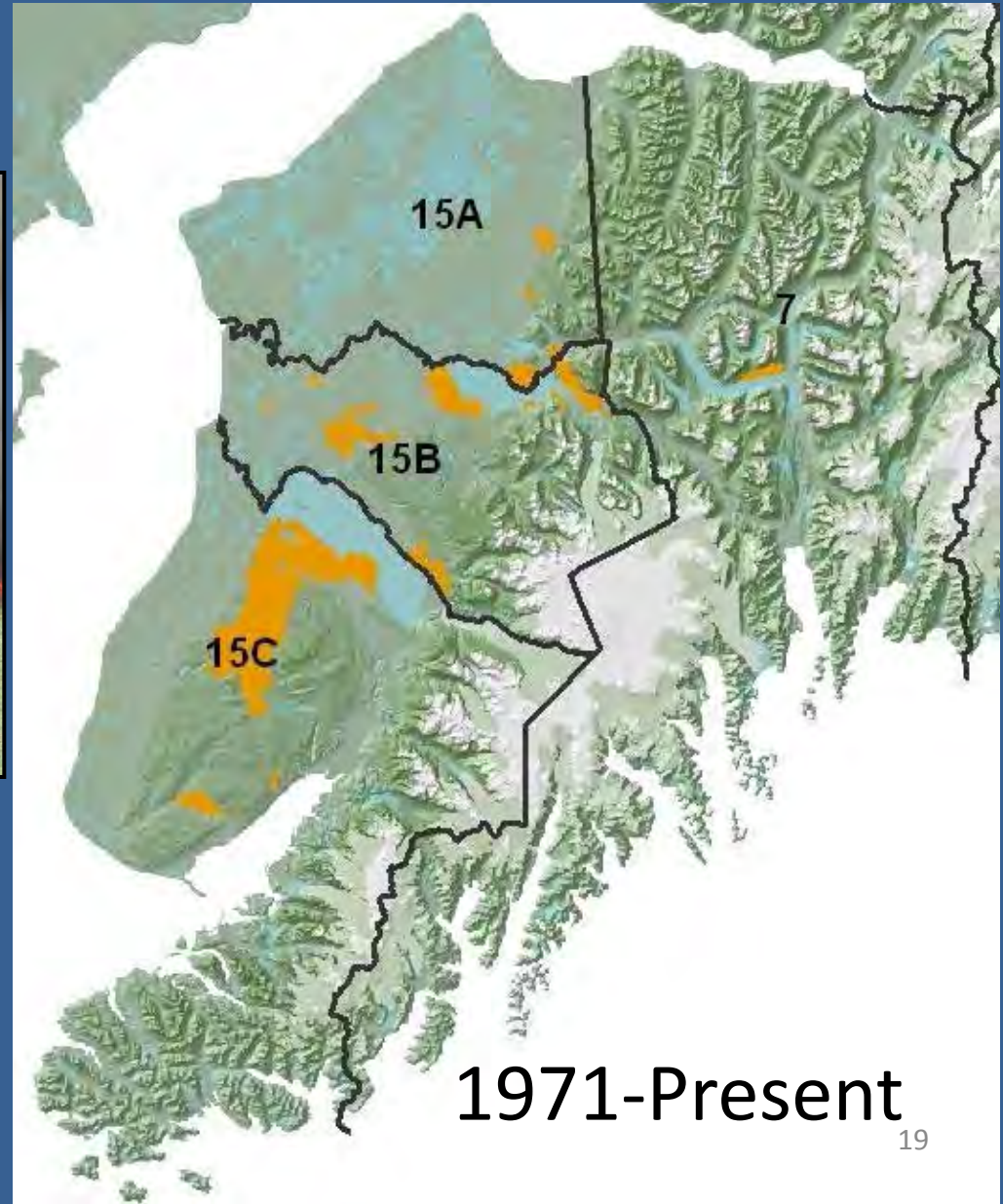


# Moose

- Spike-Fork 50" antler restriction 1987-2010
- 4 brow tines or  $\geq 50$ " antler restriction since 2011
- Population Size Trends
  - ▶ 15A Declining
  - ▶ 15B Declining
  - ▶ 15C Stable
  - ▶ 7 Declining
- 7 moose proposals



# Kenai Peninsula Fire History



1971-Present

# Loranger et al. 1991

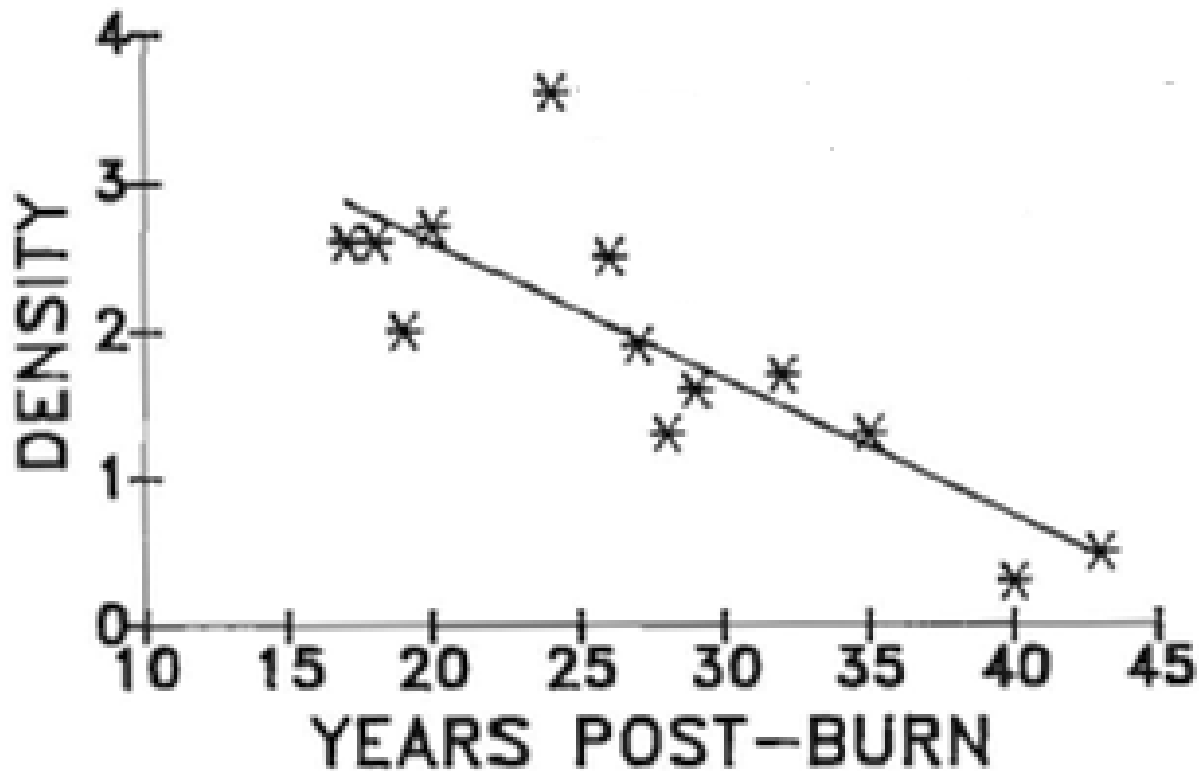
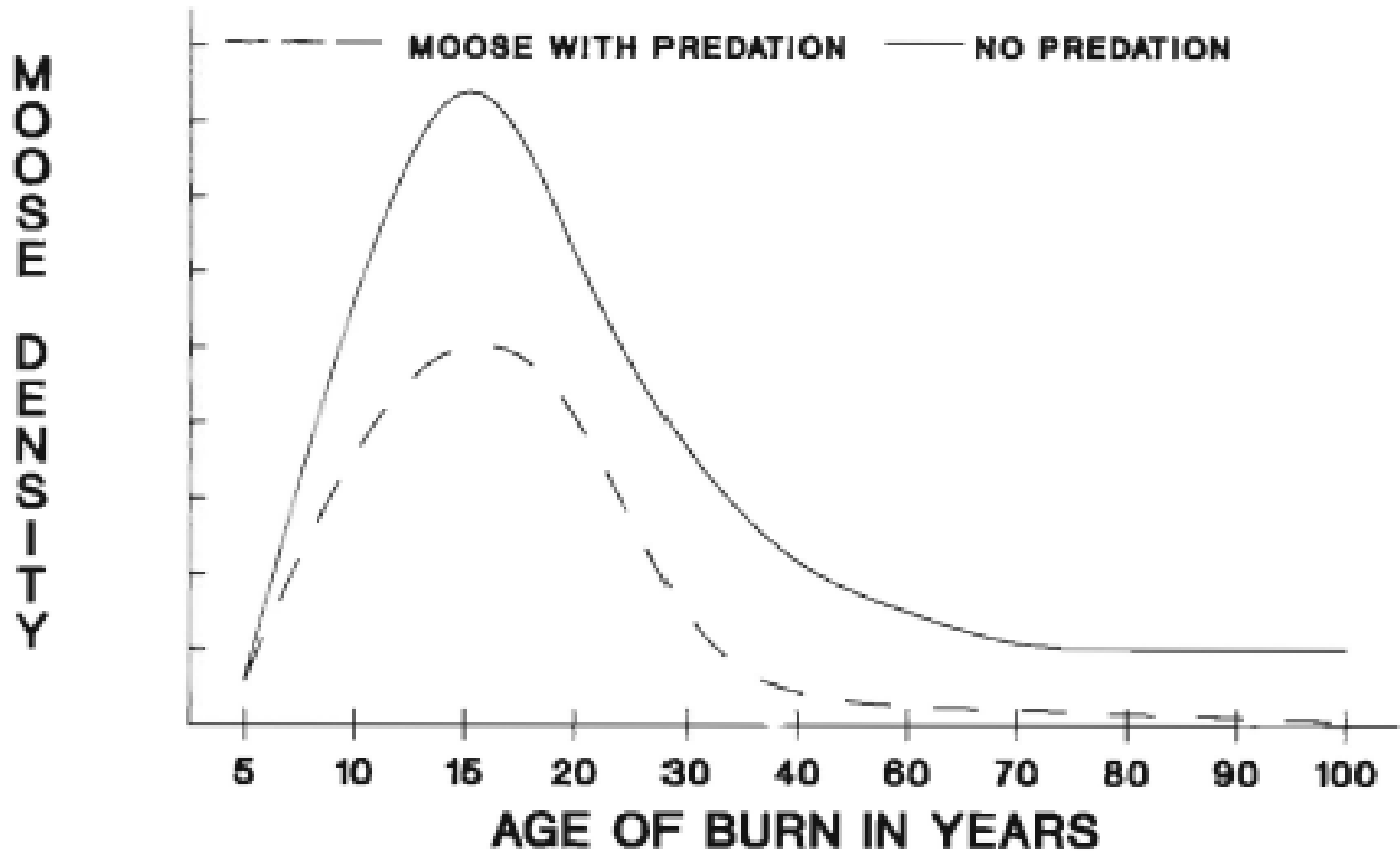


Fig. 2. Relationship between moose density (moose/km<sup>2</sup>) during winter and forest age in the 1947 burn, 1964-1990.

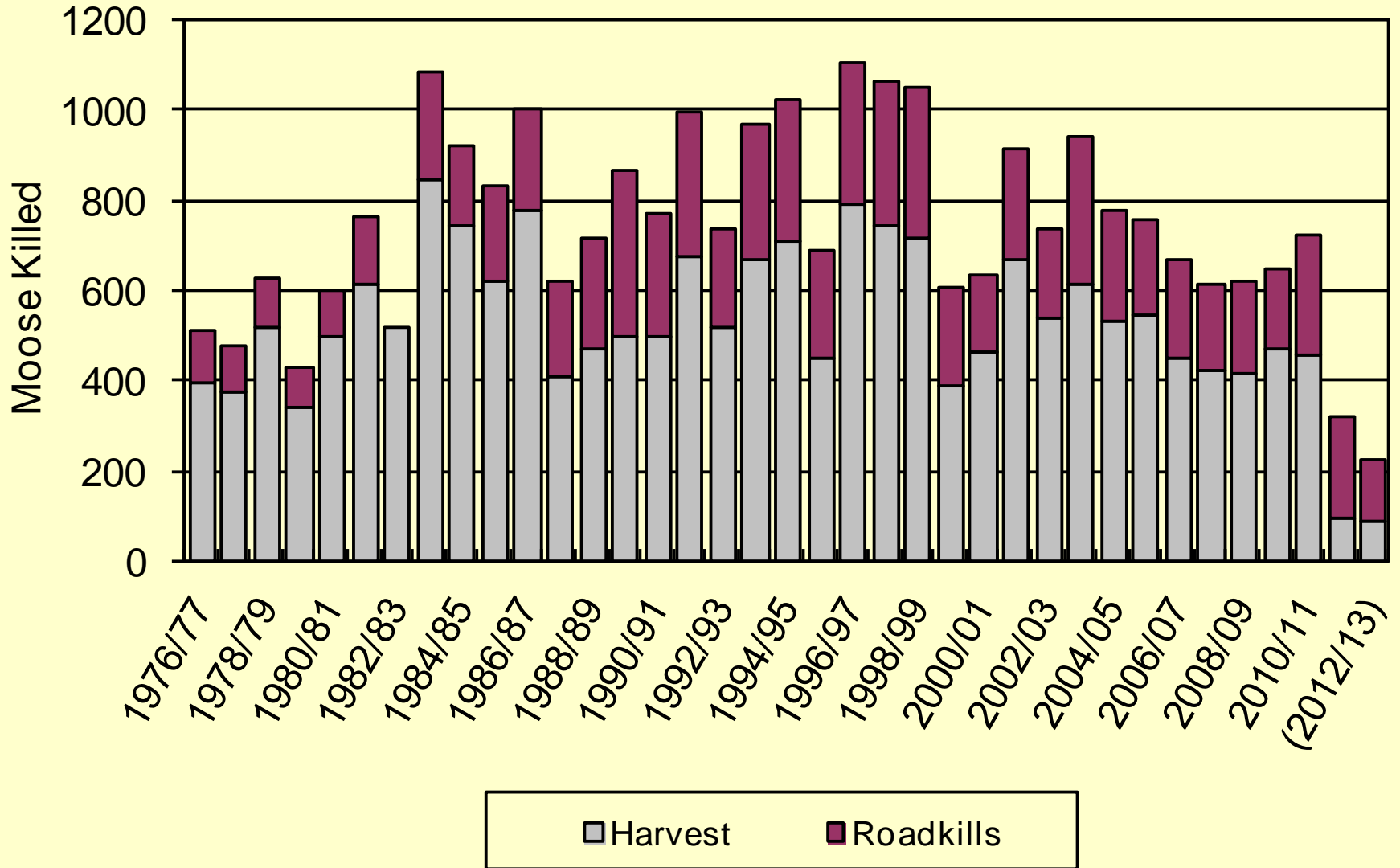
# Schwartz and Franzmann 1989



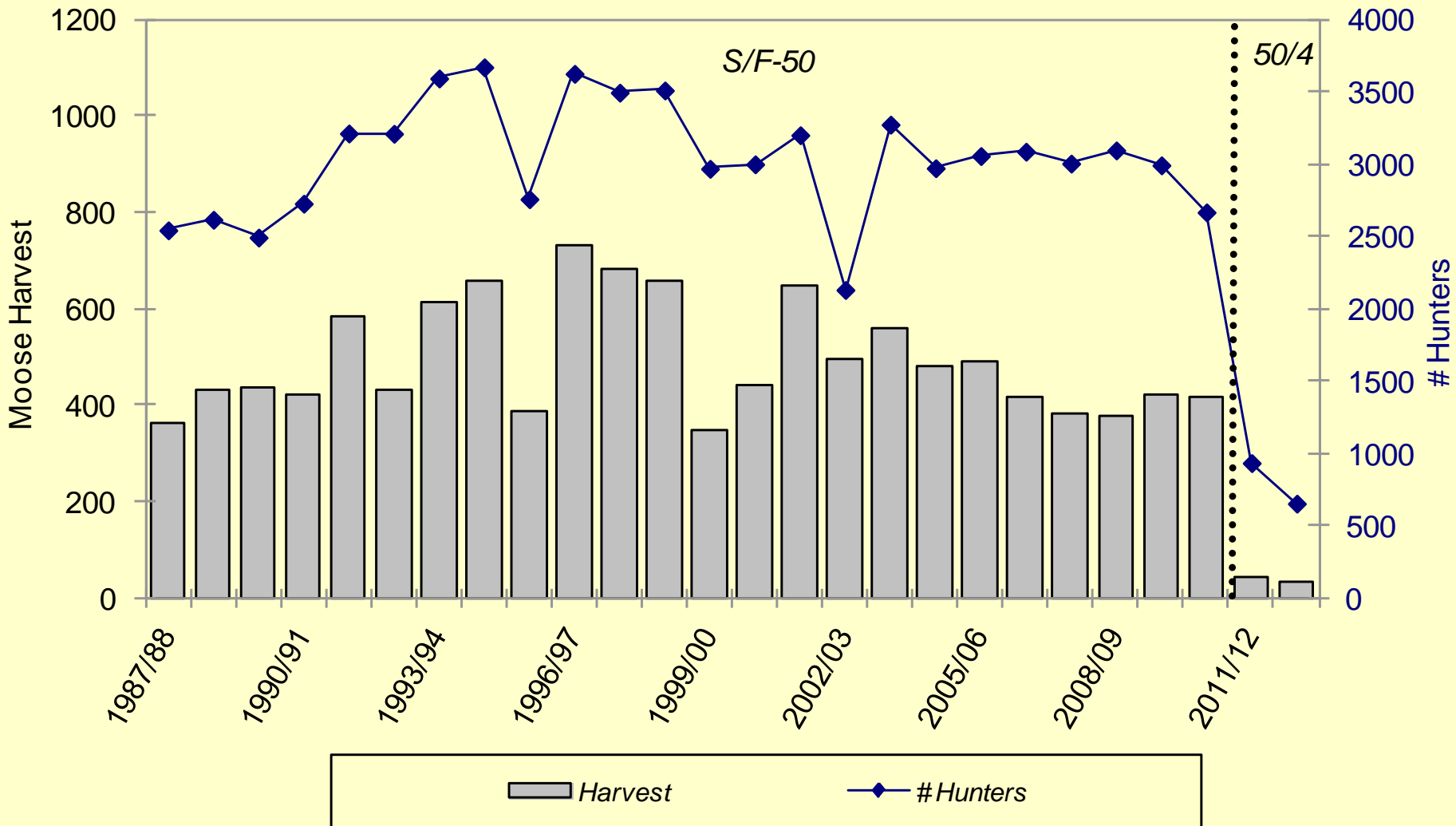
An aerial photograph of a winter landscape. The scene is dominated by a dense forest of evergreen trees, their branches heavily laden with snow. A narrow, winding path or road cuts through the forest, leading towards a small, white building with a dark roof. The ground is covered in a thick layer of snow, and the sky is a clear, pale blue. The overall atmosphere is serene and quiet.

# Unit 15A Habitat

# Total Reported Moose Mortality in GMUs 7 & 15 (1976/77 - 2012/13)



## General Season Moose Harvest and Hunter Numbers in GMUs 7&15 (1987/88 - 2012/13)





# Unit 15 Moose Summary

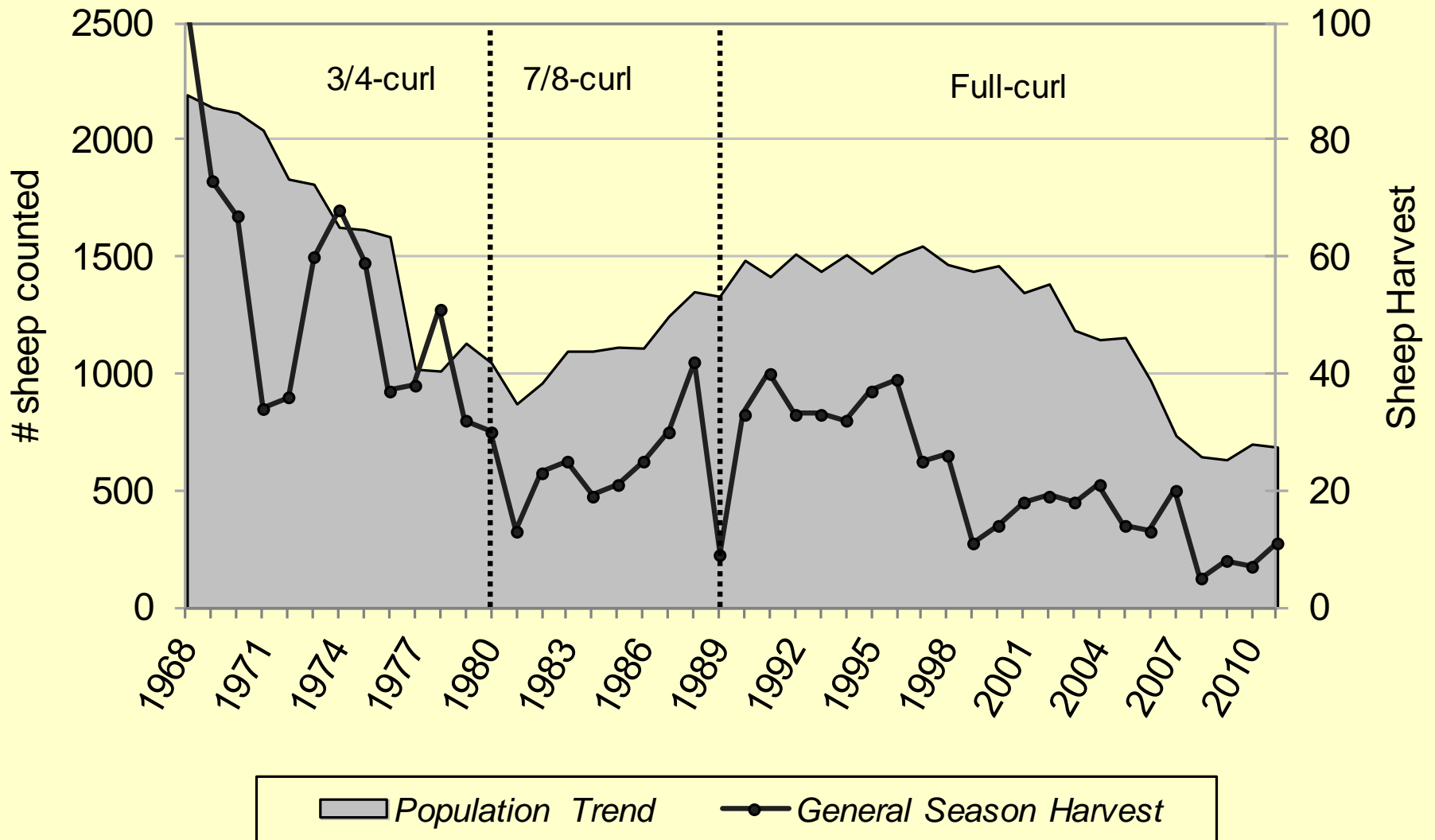
- Currently habitat limited, particularly in 15A and 15B
- Need to increase the number and frequency of fires on the Peninsula
- Harvest strategy should include harvest of all sex and age classes because of habitat limitations
- We have a chance to increase hunter opportunity based on most recent population estimates and composition counts

# Sheep



- Population decline from late 1990s
- 800-1000 sheep
- No Kenai specific sheep proposals

# Sheep population size trend and harvest in GMUs 7&15 1968 - 2011

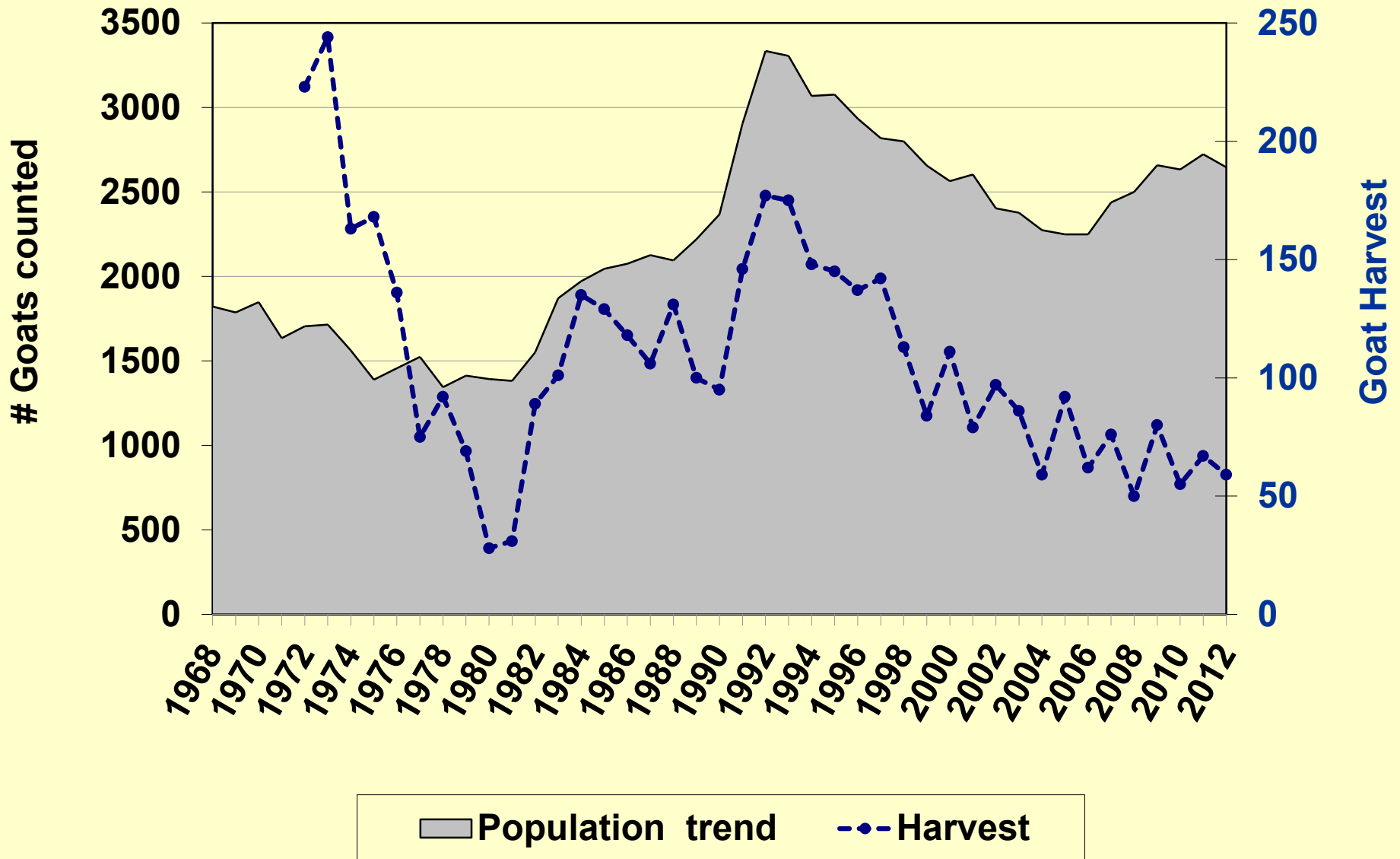


# Mountain Goats

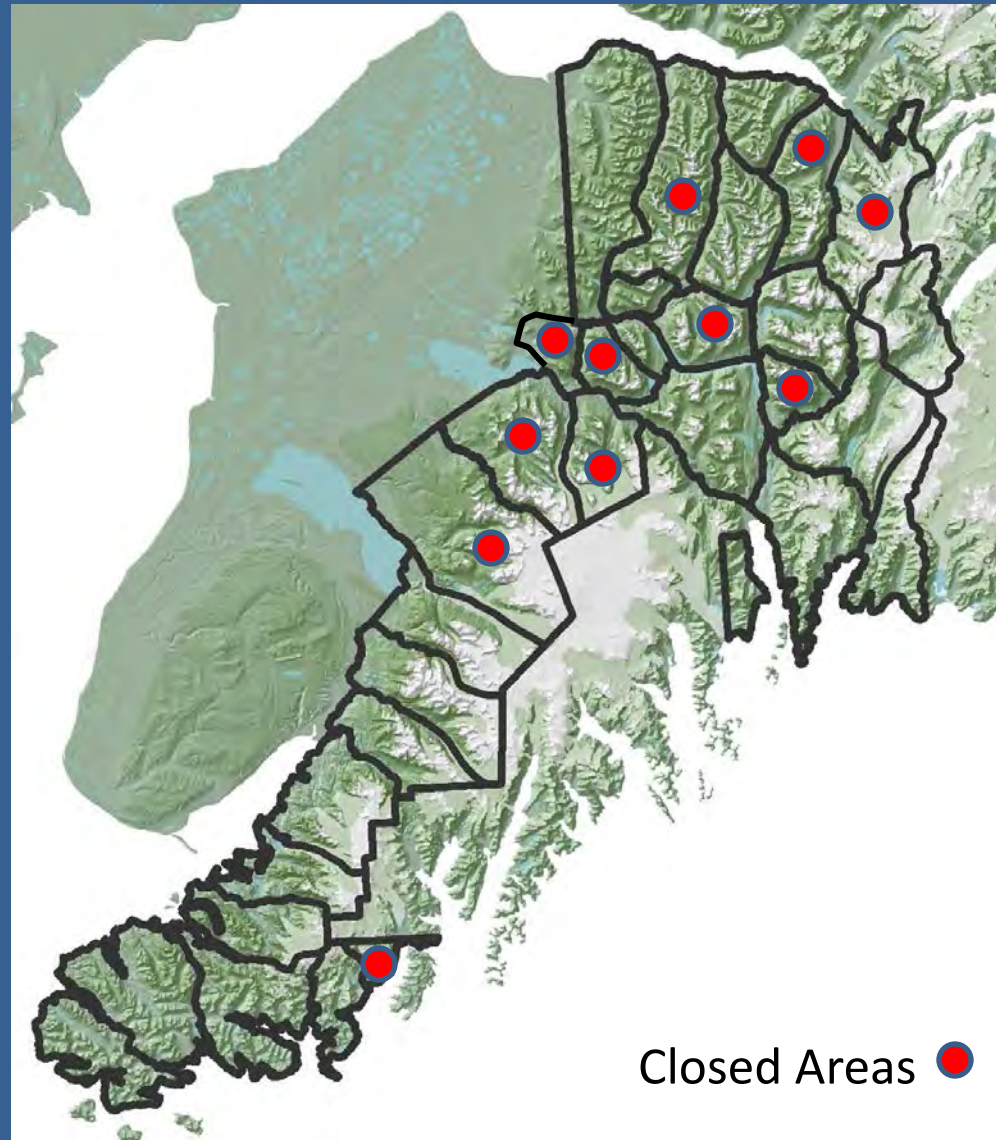
- Population decline from early 1990s
- 3000-4000 goats
- No goat proposals



# Goat population trend and harvest in GMUs 7&15 1968 - 2012



# Individual goat hunt areas

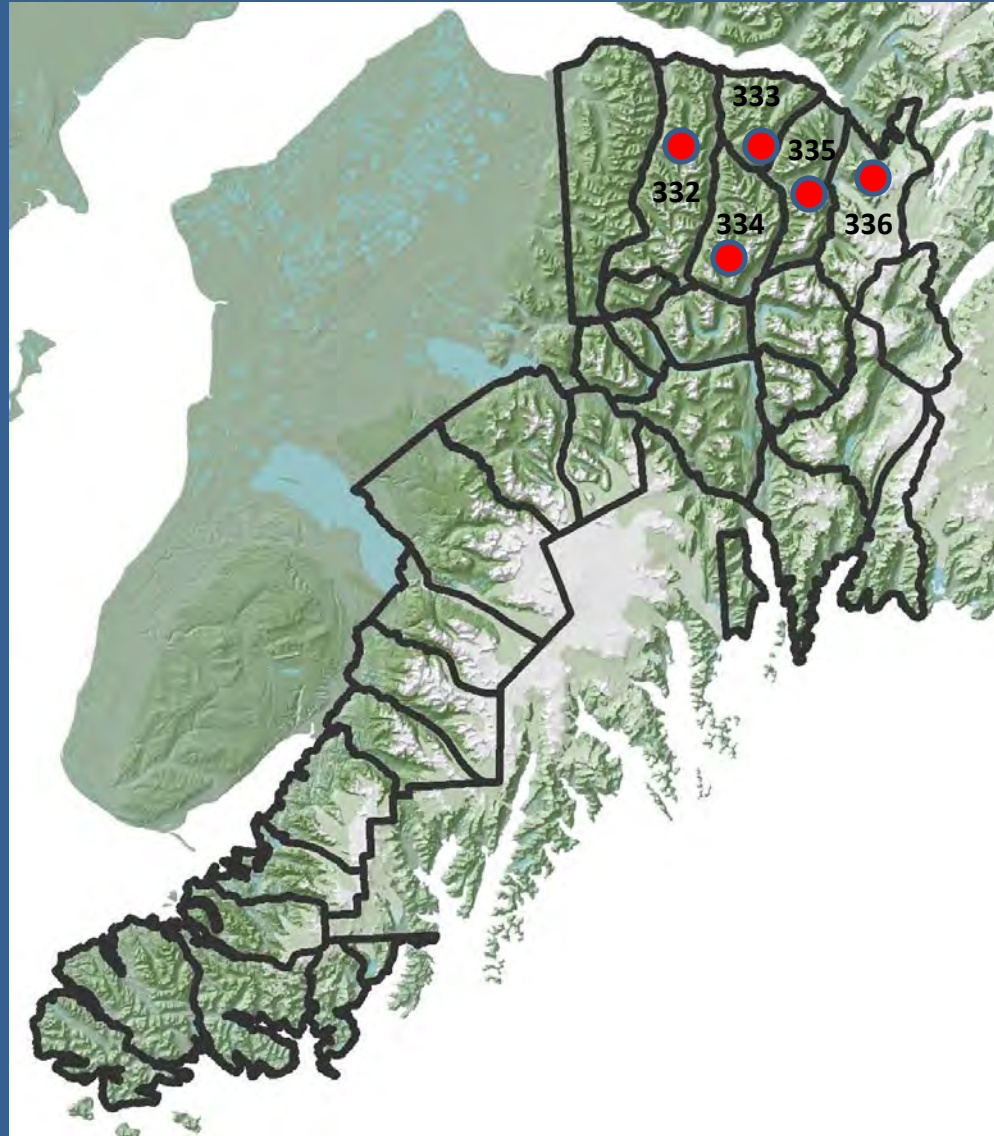


# Current Concerns

## Backcountry Recreation

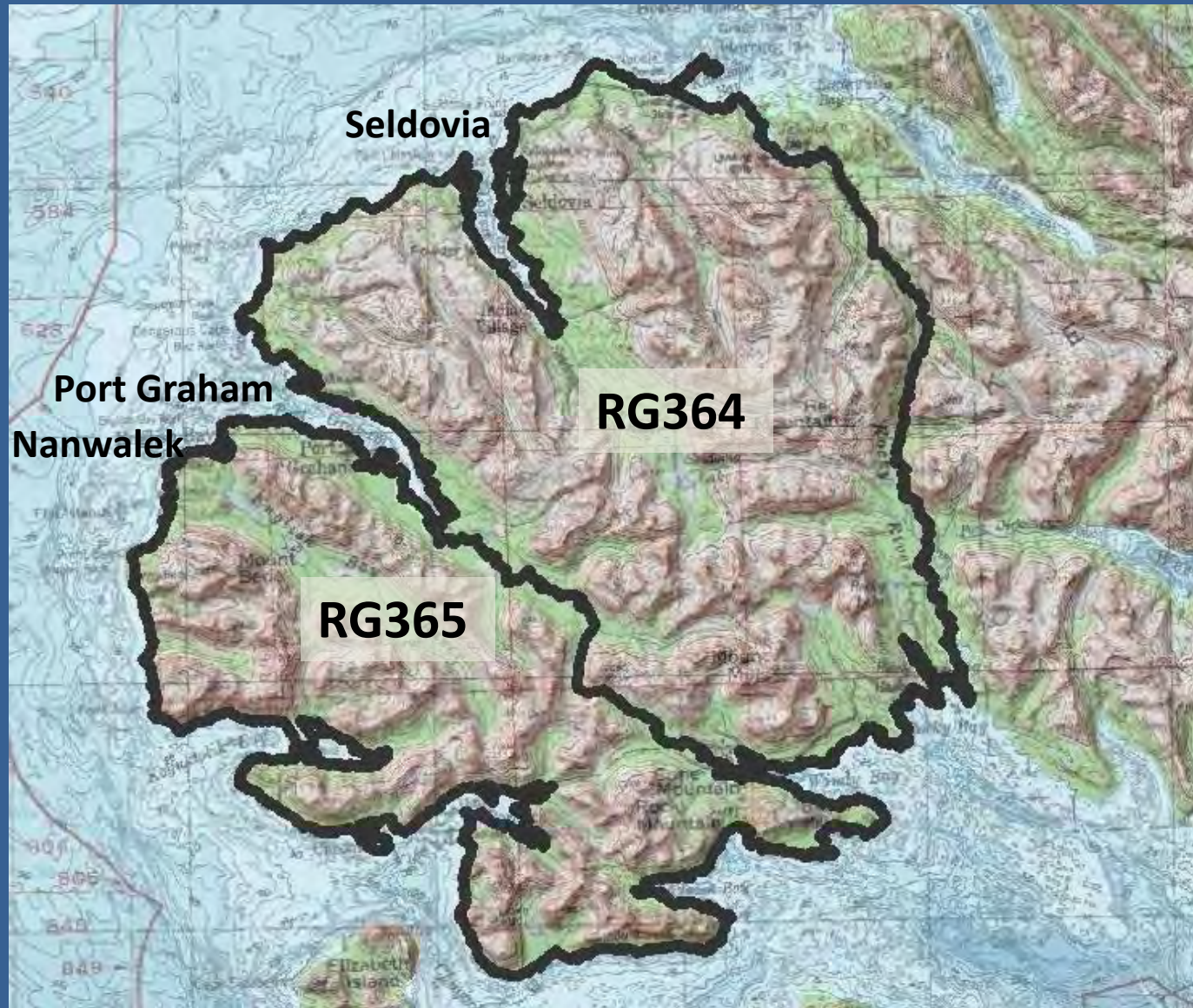
- DG332-336 have seen heli ski use since heli ski on the Chugach started in 1997. All populations have seen dramatic declines since heli ski start up
- All areas have easy highway access for snow machines and road based skiing with the exception of 336 (limited)
- DG332, 334, and 336 have reached a >35% population decline in last 10 years, which should initiate the USFS to consult ADF&G about their current management plan.
- DG333 and 335 >50% decrease since 2000

# Population Decline Areas of Concern





# Start up Heli Ski Operation Seldovia





**Questions?**