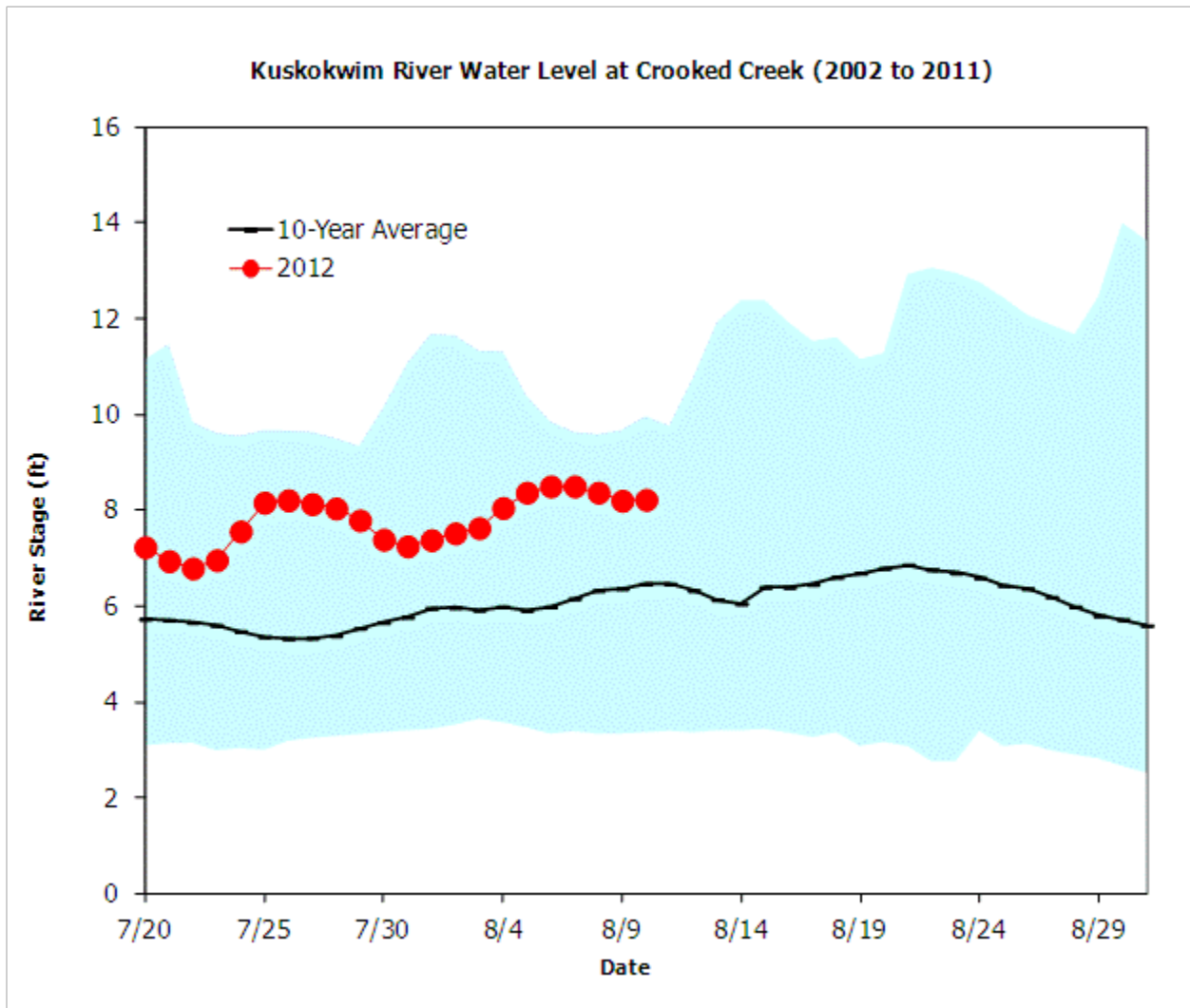


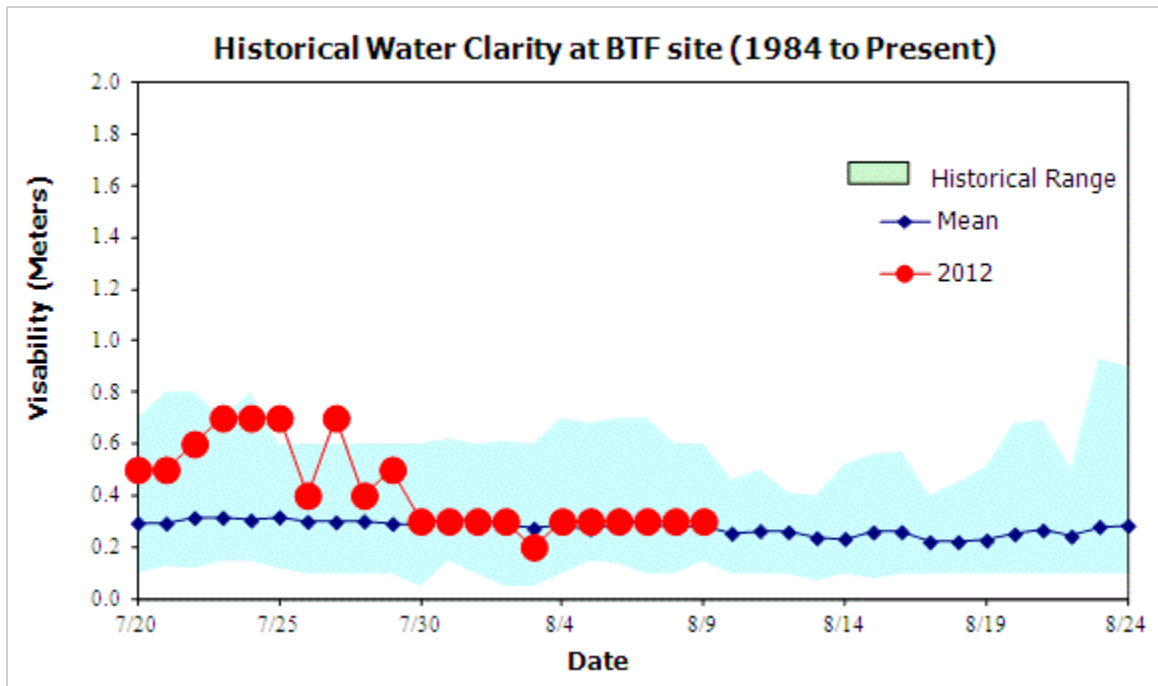
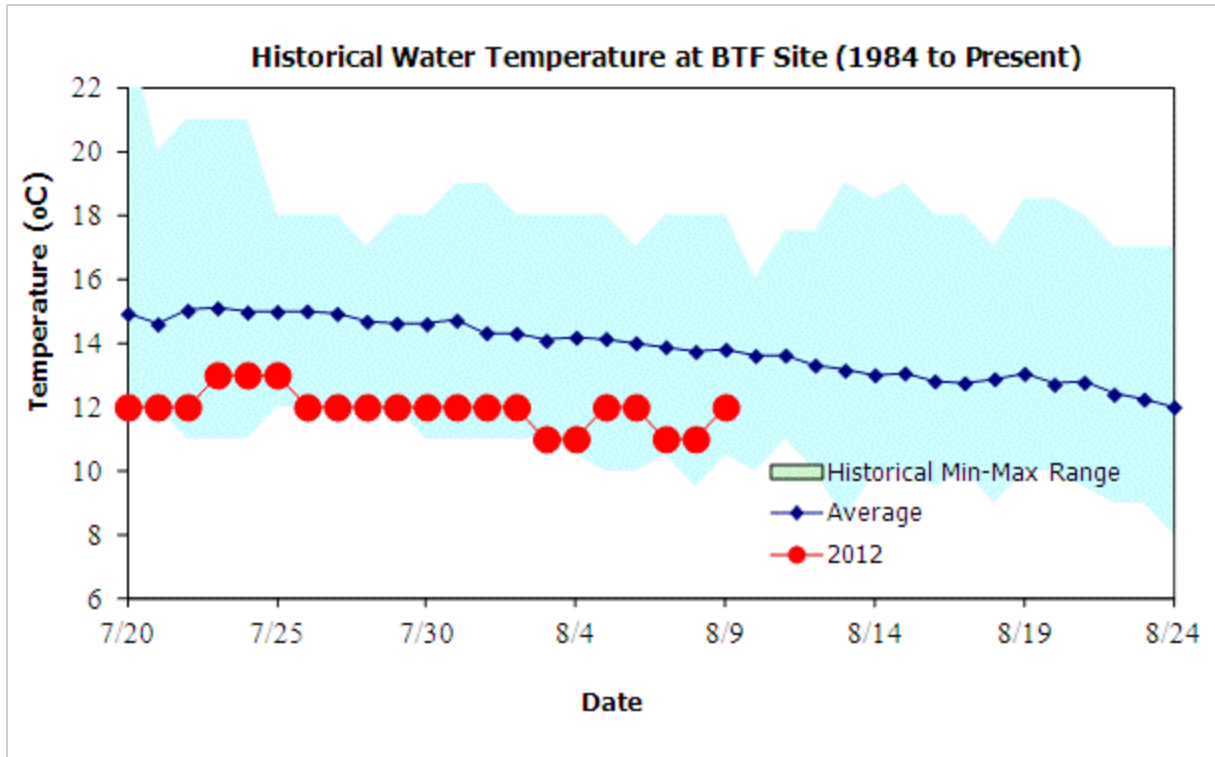
Kuskokwim River Salmon Management Working Group
1 (800) 315-6338 (MEET) Code: 58756# (KUSKO)
ADF&G Bethel toll free: 1 (855) 933-2433

Information Packet

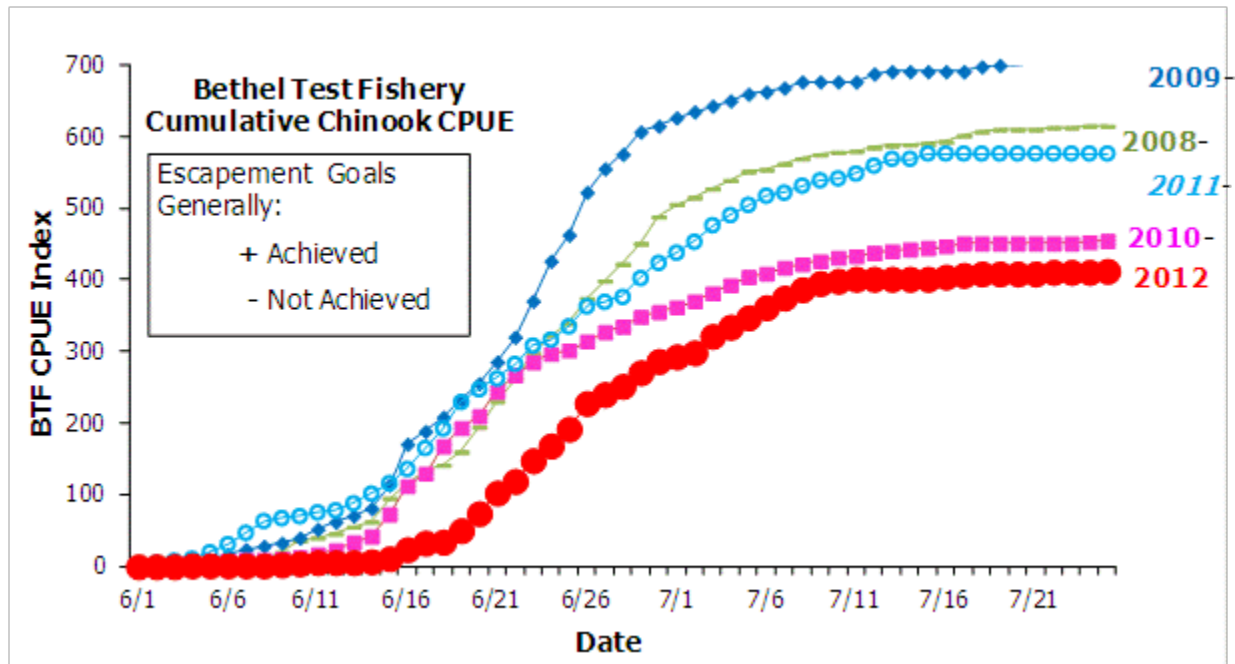
August 10, 2012

OVERVIEW OF KUSKOKWIM RIVER SALMON RUN ASSSSMENT PROJECTS

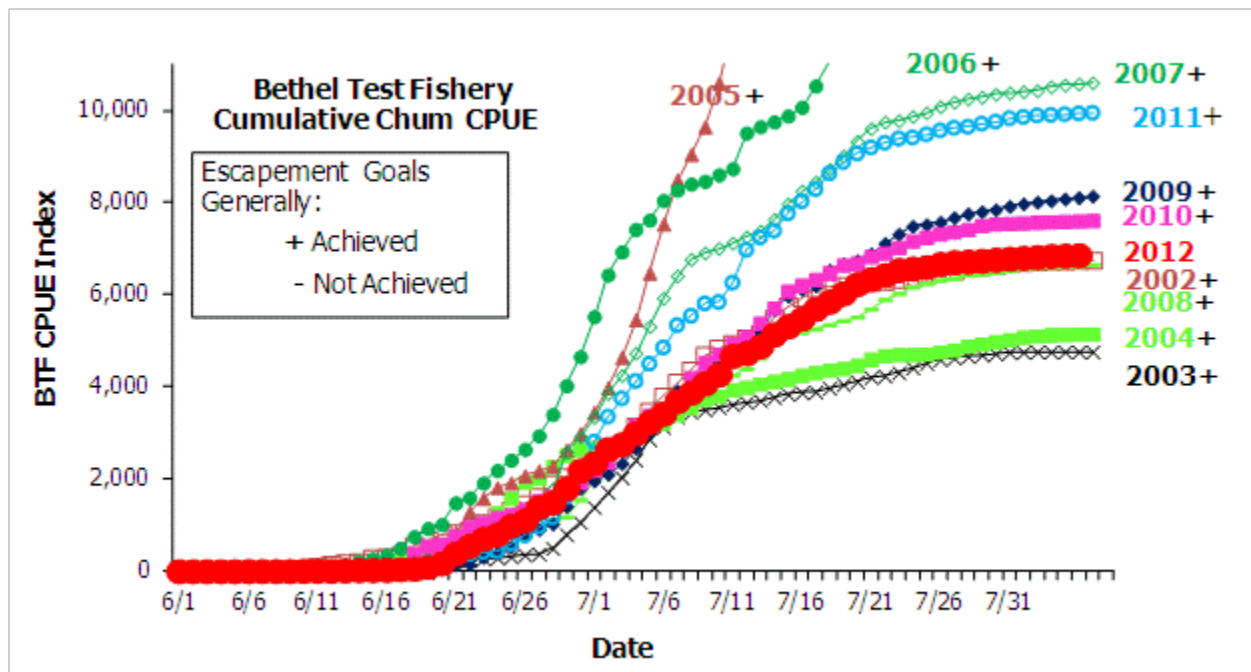




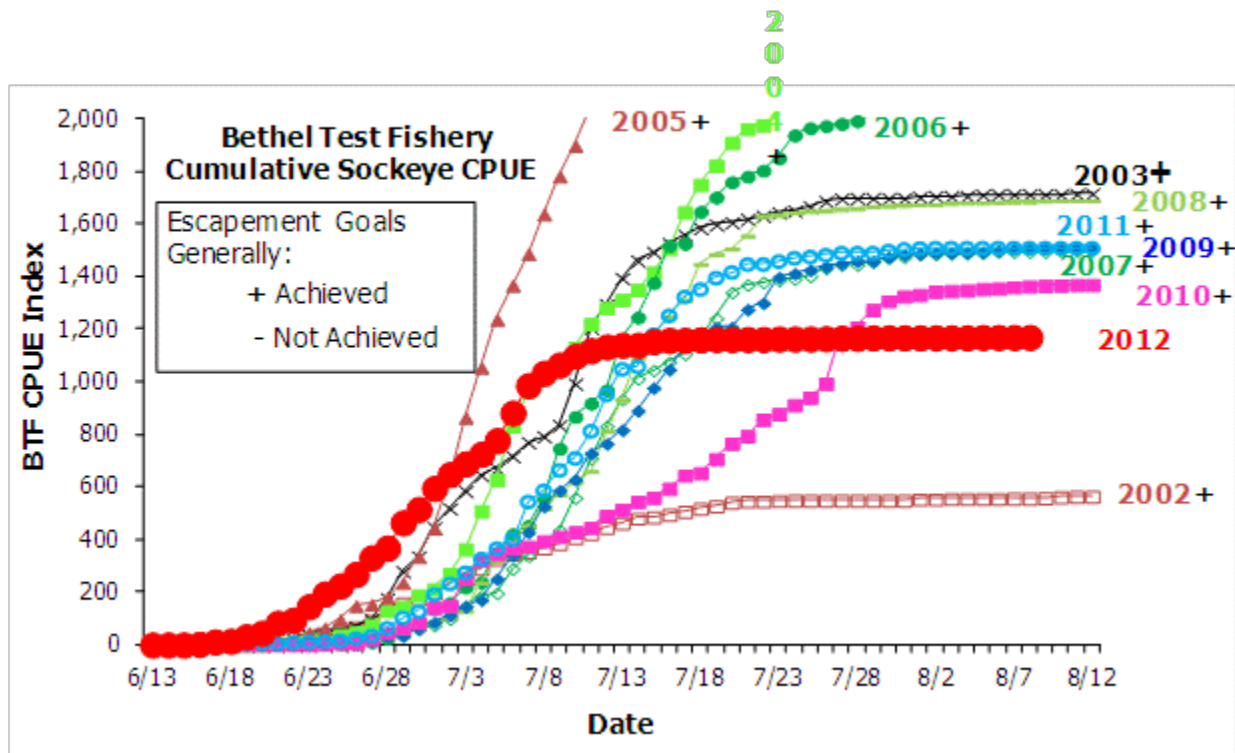
Chinook Salmon Cumulative CPUE Index, Bethel Test Fishery



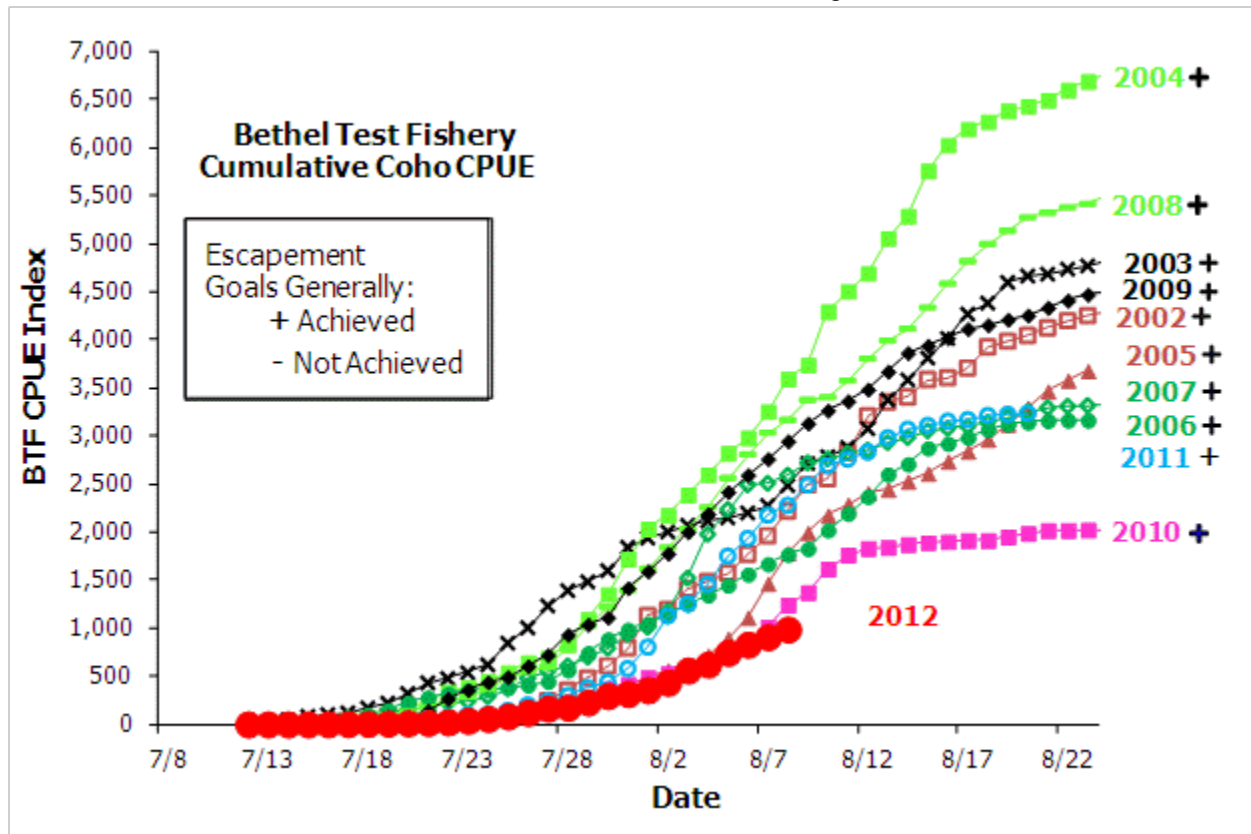
Chum Salmon Cumulative CPUE Index, Bethel Test Fishery



Sockeye Salmon Cumulative CPUE Index, Bethel Test Fishery

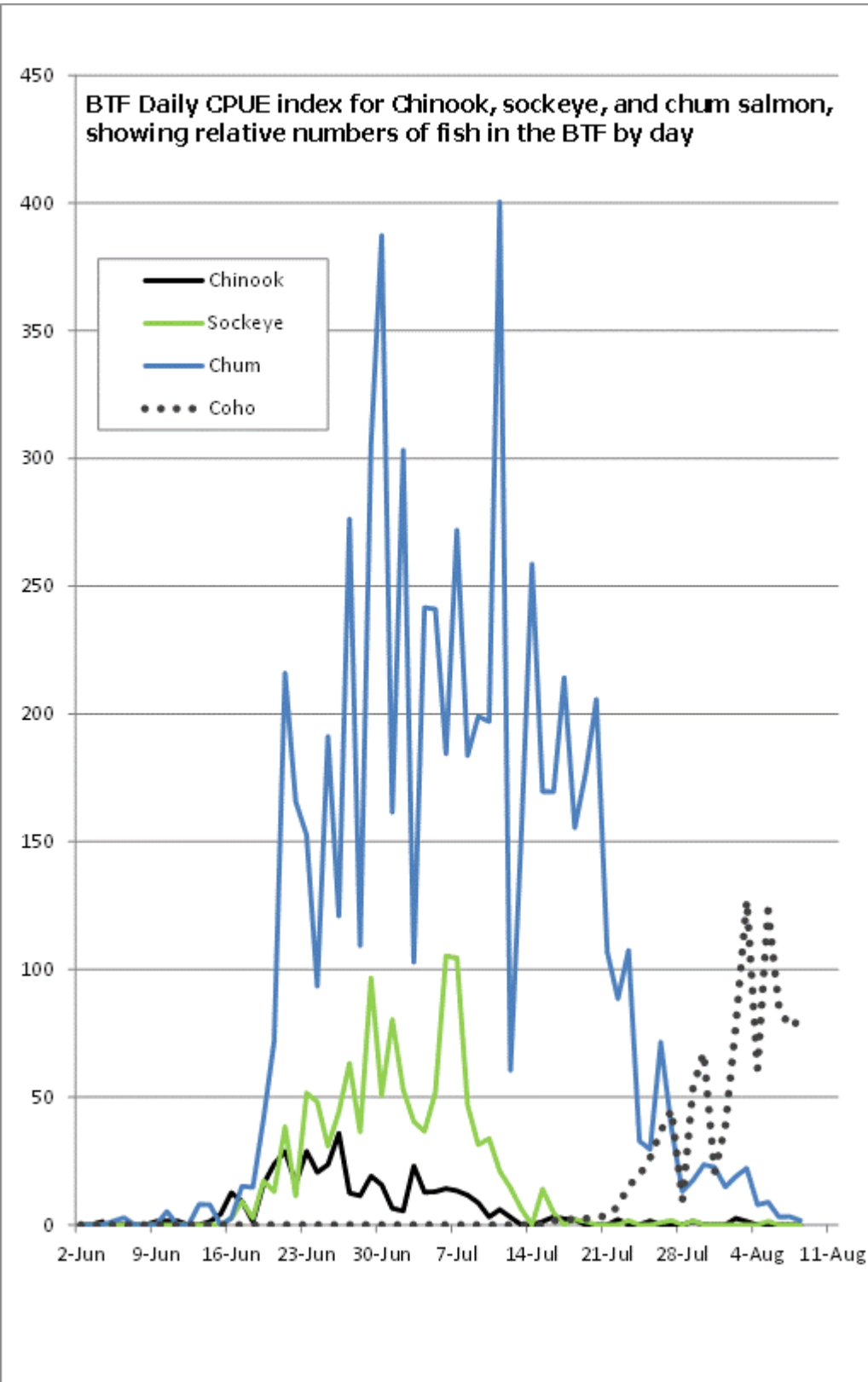


Coho Salmon Cumulative CPUE Index, Bethel Test Fishery



**Bethel Test Fishery
Coho Salmon Cumulative CPUE Index**

	2002	2003	2004	2005	2006	2007	2008	2009	2010	2011	2012
8/1	1,129	1,936	2,034	486	1,047	1,008	1,616	1,593	488	802	355
8/2	1,192	2,001	2,173	561	1,158	1,171	1,837	1,777	531	1,126	434
8/3	1,405	2,067	2,389	622	1,250	1,519	2,030	2,000	580	1,252	561
8/4	1,483	2,112	2,599	715	1,344	1,975	2,253	2,190	634	1,454	622
8/5	1,572	2,147	2,819	892	1,447	2,234	2,560	2,418	713	1,749	745
8/6	1,768	2,197	2,982	1,112	1,560	2,491	2,806	2,595	804	1,932	830
8/7	1,959	2,272	3,255	1,466	1,668	2,506	3,032	2,762	1,011	2,177	907
8/8	2,215	2,483	3,594	1,783	1,767	2,590	3,163	2,946	1,242	2,276	988
8/9	2,489	2,711	3,740	1,994	1,827	2,719	3,373	3,132	1,371	2,489	
8/10	2,553	2,782	4,294	2,174	2,019	2,762	3,402	3,266	1,616	2,691	
8/11	2,831	2,877	4,505	2,286	2,193	2,821	3,573	3,363	1,762	2,758	
8/12	3,207	3,074	4,694	2,406	2,369	2,850	3,801	3,485	1,831	2,832	
8/13	3,351	3,375	5,057	2,444	2,601	2,931	3,990	3,672	1,840	2,979	



ESCAPEMENT MONITORING

Status of Salmon Assessment Projects as of August 3, 2012

- Kwethluk River weir did not operate from July 11th – 18th and July 23rd – 29th. Missed passage during these times has not been estimated.
- Salmon River weir began operation on July 3rd. The weir was inoperable from July 9th – 16th and July 22nd – 24th. Missed passage during these times has not been estimated.
- Kogrukluk River weir did not operate from July 9th – July 27th. Missed passage during this time has not been estimated.

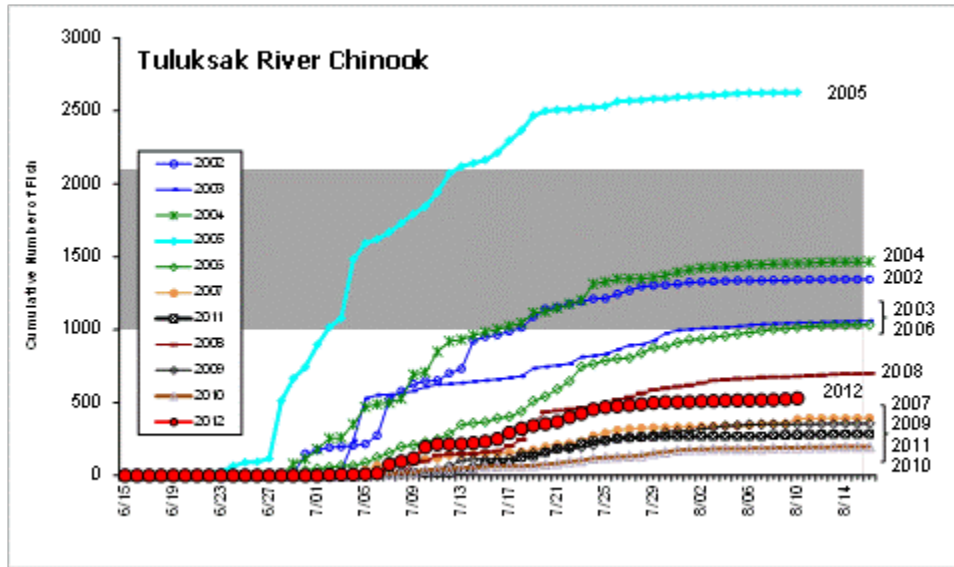
Table footnotes:

- (**) – Partial passage day. No estimates made.

Chinook Salmon

Kwethluk River weir historical cumulative daily Chinook salmon escapement.											
	= years below escapement goal.				Esc Goal Range: 6,000 to 11,000						
Date	Cumulative Daily Passage										
	2002	2003	2004	2005	2006	2007	2008	2009	2010	2011	2012
8/04	8,339	14,076	28,035		17,336	12,591	5,083	5,671	1,633	4,004	889
8/05	8,359	14,101	28,100		17,362	12,688	5,098	5,688	1,636	4,009	900
8/06	8,372	14,142	28,196		17,379	12,739	5,137	5,694	1,643	4,018	915
8/07	8,388	14,169	28,268		17,407	12,789	5,160	5,708	1,652	4,021	925
8/08	8,415	14,192	28,299		17,417	12,828	5,178	5,712	1,658	4,024	931
8/09	8,428	14,212	28,311		17,445	12,849	5,198	5,713	1,660	4,030	933
8/10	8,442	14,233	28,332		17,469	12,860	5,213	5,716	1,661	4,035	
8/11	8,458	14,240	28,364		17,487	12,865	5,229	5,719	1,662	4,038	
8/12	8,464	14,269	28,401		17,507	12,871	5,241	5,724	1,665	4,041	
Season											
Total	8,502	14,474	28,604	n.a.	17,618	12,927	5,275	5,744	1,693	4,079	

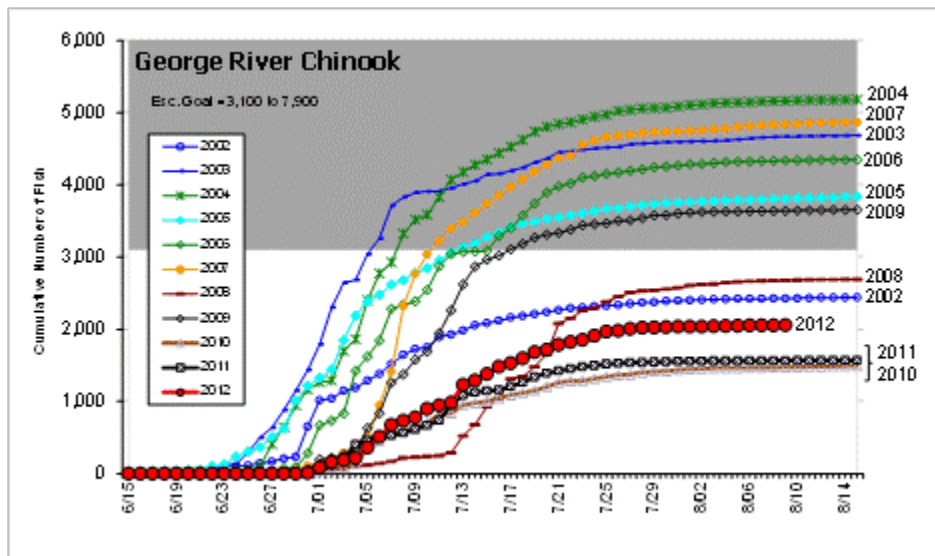
Chinook Salmon (continued)



Salmon River weir, Aniak River
Historical cumulative daily Chinook salmon escapement.

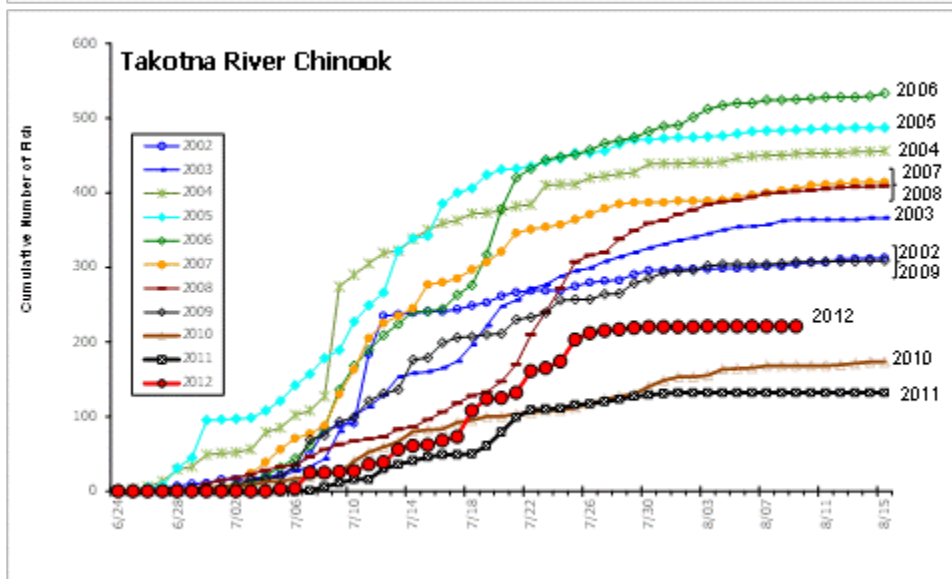
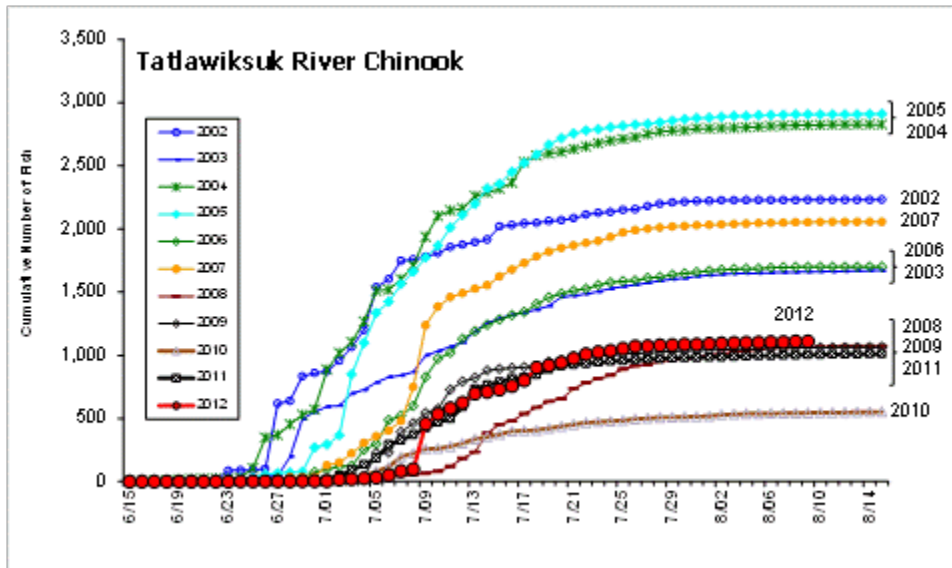
Esc Goal Range: none

Date	Cumulative Daily Passage						2012
	2006	2007	2008	2009	2010	2011	
8/04	6,535	5,505	2,166	1,437			400
8/05	6,597	5,700	2,229	1,455			411
8/06	6,644	5,810	2,260	1,471	operated	operated	427
8/07	6,687	5,876	2,285	1,475	2010	2011	431
8/08	6,732	5,959	2,309	1,499			441
8/09	End of operation	5,978	2,329	1,507			448
8/10		6,030	2,343	1,520			
8/11		6,064	2,354	1,529			
8/12		6,090	2,356	1,534			



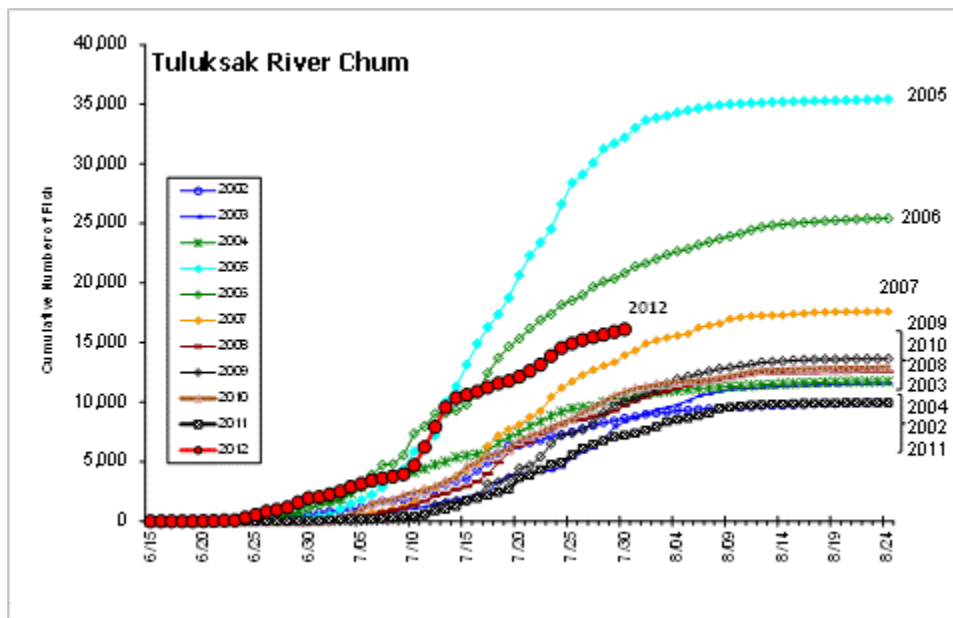
Chinook Salmon (continued)

Kogruduk River weir historical cumulative daily Chinook salmon escapement.											
	= years below escapement goal.										Esc Goal Range: 5,300 to 14,000
Date	Cumulative Daily Passage										
	2002	2003	2004	2005	2006	2007	2008	2009	2010	2011	2012
8/04	10020	11550	19226	21490	18751	12533	9309	9406	5187	6374	934
8/05	10031	11573	19296	21554	18912	12622	9397	9473	5221	6462	971
8/06	10040	11593	19344	21611	18975	12696	9461	9513	5324	6519	1026
8/07	10046	11620	19421	21656	19037	12755	9519	9535	5373	6545	1048 **
8/08	10057	11644	19469	21707	19075	12809	9548	9556	5392	6573	1067
8/09	10064	11659	19492	21737	19092	12843	9584	9579	5457	6618	1080 **
8/10	10065	11666	19529	21769	19114	12872	9609	9601	5502	6662	
8/11	10070	11669	19539	21783	19153	12889	9637	9612	5518	6710	
8/12	10075	11683	19564	21809	19182	12917	9661	9629	5559	6750	
Season Total	10,104	11,771	19,651	22,000	19,414	13,029	9,730	9,702	5,690	6,891	



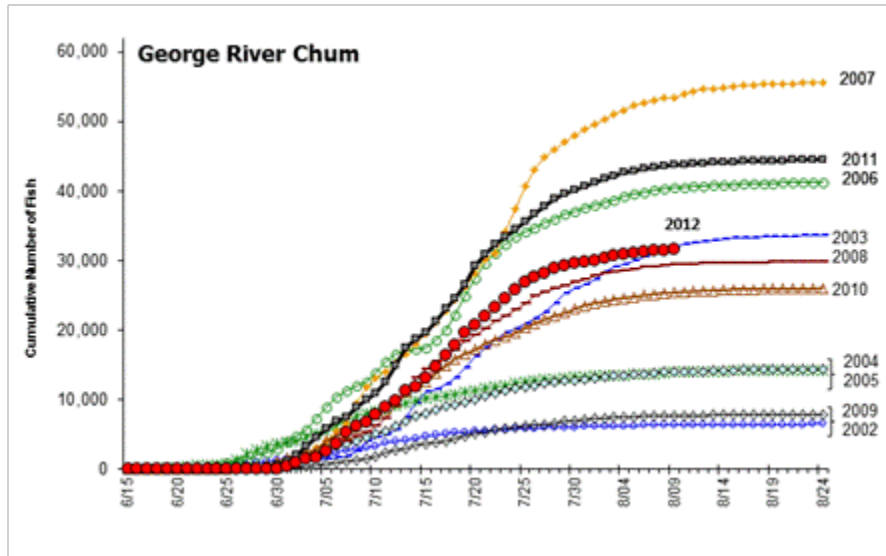
Chum Salmon

Kwethluk River weir historical cumulative daily chum salmon escapement.											
	Esc Goal Range: none										
Date	Cumulative Daily Passage										
	2002	2003	2004	2005	2006	2007	2008	2009	2010	2011	2012
8/04	33,852	36,238	35,582		44,811	49,247	18,415	29,643	18,282	17,202	3,528
8/05	33,969	37,279	35,948		45,103	50,630	18,588	30,015	18,392	17,298	3,651
8/06	34,209	38,020	36,479		45,408	51,367	18,889	30,268	18,494	17,452	3,800
8/07	34,444	38,695	36,880		45,786	51,831	18,993	30,755	18,721	17,581	3,917
8/08	34,708	39,544	37,045		45,926	52,349	19,124	31,012	18,839	17,706	4,022
8/09	34,834	40,273	37,270		46,169	52,841	19,338	31,102	18,906	17,819	4,089
8/10	35,021	40,433	37,458		46,398	53,339	19,467	31,251	18,937	17,904	
8/11	35,184	40,503	37,727		46,625	53,546	19,566	31,377	18,954	17,977	
8/12	35,297	40,699	37,889		46,882	53,718	19,629	31,551	18,976	18,029	
Season											
Total	35,854	41,812	38,646	n.a.	47,490	54,913	20,030	32,191	19,242	18,329	

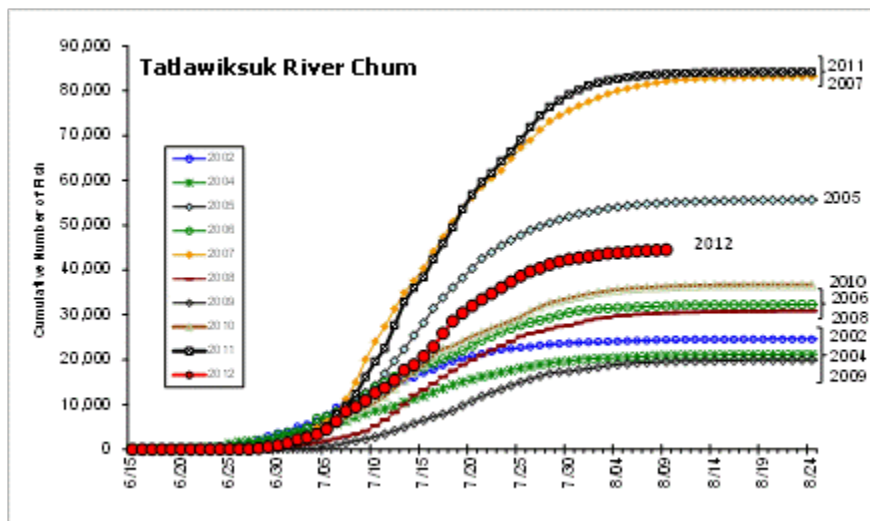


Salmon River weir, Aniak River Historical cumulative daily chum salmon escapement.							
	Esc Goal Range: none						
Date	Cumulative Daily Passage						
	2006	2007	2008	2009	2010	2011	2012
8/04	39,395	23,937	8,411	7,291			2,239
8/05	39,655	24,213	8,707	7,631	Not	Not	2,344
8/06	39,893	24,359	8,960	7,928	operated	operated	2,479
8/07	40,138	24,494	9,100	8,148	2010	2011	2,551
8/08	40,306	24,599	9,165	8,349			2,598
8/09		24,712	9,224	8,540			2,712
8/10		24,842	9,233	8,673			
8/11		24,949	9,242	8,826			
8/12		25,036	9,261	8,901			
Season							
Total	40,306	25,379	9,459	9,297	n.a.	n.a.	

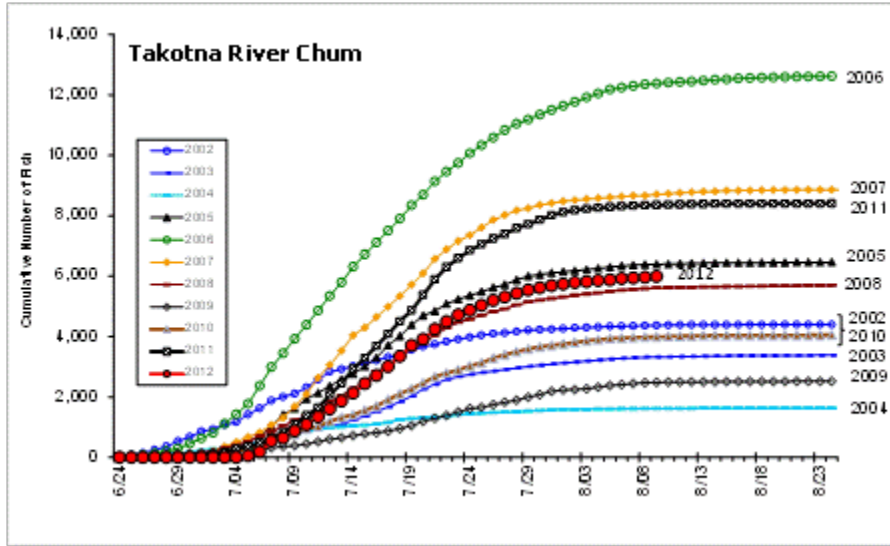
Chum Salmon (continued)



Kogrukuk River weir historical cumulative daily chum salmon escapement.											
	= years below escapement goal.										
	Esc Goal Range: 15,000 to 49,000										
Date	Cumulative Daily Passage										
	2002	2003	2004	2005	2006	2007	2008	2009	2010	2011	2012
8/04	49,354	18,935	18,821	145,986	142,843	34,067	24,783	73,325	57,354	70,613	12,123
8/05	49,354	18,935	18,821	145,986	142,843	34,067	24,783	75,188	58,266	71,892	12,354
8/06	49,354	18,935	18,821	145,986	142,843	34,067	24,783	76,597	58,961	72,747	12,734
8/07	49,354	18,935	18,821	145,986	142,843	34,067	24,783	77,672	59,647	73,299	13,021
8/08	49,354	18,935	18,821	145,986	142,843	34,067	24,783	78,611	60,201	73,609	13,279
8/09	49,354	18,935	18,821	145,986	142,843	34,067	24,783	79,688	60,578	74,022	13,357
8/10	49,354	18,935	18,821	145,986	142,843	34,067	24,783	80,698	61,106	74,472	
8/11	49,354	18,935	18,821	145,986	142,843	34,067	24,783	81,461	61,478	74,808	
8/12	49,354	18,935	18,821	145,986	142,843	34,067	24,783	82,052	61,853	75,141	
Season											
Total	51,570	23,413	24,201	197,723	180,594	49,505	44,978	84,940	63,583	76,384	



Chum Salmon (continued)



Sockeye Salmon

Kwethluk River weir historical cumulative daily sockeye salmon escapement.											
Esc Goal: none											
Date	Cumulative Daily Passage										
	2002	2003	2004	2005	2006	2007	2008	2009	2010	2011	2012
8/04	249	2,856	3,369		6,482	4,958	2,368	4,185	4,190	1,974	237
8/05	251	2,859	3,373		6,504	5,019	2,376	4,192	4,198	1,974	237
8/06	254	2,866	3,379		6,536	5,055	2,392	4,195	4,202	1,976	237
8/07	257	2,872	3,379		6,556	5,071	2,396	4,200	4,207	1,976	238
8/08	257	2,876	3,384		6,565	5,091	2,407	4,204	4,210	1,978	239
8/09	258	2,879	3,388		6,574	5,116	2,416	4,205	4,213	1,982	240
8/10	258	2,881	3,392		6,587	5,143	2,422	4,211	4,214	1,985	
8/11	259	2,882	3,401		6,599	5,158	2,424	4,212	4,214	1,985	
8/12	259	2,888	3,408		6,626	5,170	2,428	4,212	4,214	1,985	
Season											
Total	272	2,928	3,491	n.a.	6,732	5,262	2,451	4,230	4,242	2,031	

Kogruluk River weir historical cumulative daily sockeye salmon escapement.											
= years below escapement goal.											
Esc Goal Range: 4,400 to 17,000											
Date	Cumulative Daily Passage										
	2002	2003	2004	2005	2006	2007	2008	2009	2010	2011	2012
8/04	3,950	8,422	6,056	33,939	49,672	10,180	13,025	22,252	12,569	7,865	1,087
8/05	3,950	8,422	6,056	33,939	49,672	10,180	13,025	22,543	12,705	7,919	1,102
8/06	3,950	8,422	6,056	33,939	49,672	10,180	13,025	22,726	12,908	7,953	1,154
8/07	3,950	8,422	6,056	33,939	49,672	10,180	13,025	22,851	13,078	7,964	1,203
8/08	3,950	8,422	6,056	33,939	49,672	10,180	13,025	22,982	13,269	7,983	1,255
8/09	3,950	8,422	6,056	33,939	49,672	10,180	13,025	23,096	13,403	8,003	1,273
8/10	3,950	8,422	6,056	33,939	49,672	10,180	13,025	23,215	13,497	8,023	
8/11	3,950	8,422	6,056	33,939	49,672	10,180	13,025	23,319	13,591	8,046	
8/12	3,950	8,422	6,056	33,939	49,672	10,180	13,025	23,386	13,656	8,064	
Season											
Total	4,050	9,164	6,775	37,939	60,807	16,525	19,675	23,785	13,995	8,132	

Telaquana Lake Weir historical cumulative daily sockeye salmon escapement.			
Esc Goal Range: none			
Date	Cumulative Daily Passage		
	2010	2011	2012
8/04	58,811	34,171	21,398
8/05	61,893	34,314	21,701
8/06	63,898	34,373	21,826
8/07	66,060	34,527	21,996
8/08	67,582	34,641	22,182
8/09	68,218	34,742	22,236
8/10	69,153	34,815	
8/11	69,820	34,861	
8/12	70,237	34,879	
Season			
Total	72,021	34,314	

Coho Salmon

Kwethluk River historical cumulative daily coho salmon escapement.											
	Esc Goal: > 19,000										
Date	Cumulative Daily Passage										
	2002	2003	2004	2005	2006	2007	2008	2009	2010	2011	2012
8/04	401	1,500	1,278		1,670	1,447	1,259	873	22	256	308
8/05	423	1,831	1,630		1,806	2,495	1,427	1,263	36	296	344
8/06	474	2,165	2,475		2,022	2,948	1,885	1,424	51	360	467
8/07	525	2,915	2,827		2,190	3,201	2,054	1,814	73	401	591
8/08	572	4,268	3,007		2,293	3,527	2,336	2,031	126	451	731
8/09	617	6,358	3,403		2,424	3,801	3,081	2,065	173	451	879
8/10	859	6,748	3,630		2,749	4,289	3,885	2,134	204	451	
8/11	971	6,772	5,361		3,401	4,657	4,678	2,192	226	654	
8/12	1,271	7,908	6,171		4,452	4,988	6,215	2,769	292	790	
Season											
Total	23,298	109,163	64,216	n.a.	25,664	20,257	49,971	21,911	n.a.	4,482	

Tuluksak River weir historical cumulative daily coho salmon escapement.											
	Esc Goal Range: none										
Date	Cumulative Daily Passage										
	2002	2003	2004	2005	2006	2007	2008	2009	2010	2011	2012
8/04	16	152	463	123	222	124	155	68	20	45	254
8/05	18	190	521	165	271	223	193	94	23	52	273
8/06	24	292	837	188	310	286	271	110	24	57	290
8/07	31	393	1,107	224	342	299	315	131	27	62	318
8/08	37	728	1,181	266	385	309	346	155	50	67	412
8/09	56	1,163	1,439	316	430	380	491	165	60	67	503
8/10	65	1,404	1,686	381	539	437	605	182	72	67	
8/11	111	1,505	2,850	448	606	478	911	197	81	67	
8/12	308	1,773	3,007	506	685	540	1,103	410	102	67	
Season											
Total	11,487	41,071	20,336	11,324	6,111	2,807	7,457	8,137	1,216	92	

Salmon River weir, Aniak River Historical cumulative daily coho salmon escapement.							
	Esc Goal Range: none						
Date	Cumulative Daily Passage						
	2006	2007	2008	2009	2010	2011	2012
8/04	168	90	91	103			21
8/05	221	172	123	110	Not	Not	23
8/06	255	209	166	124	operated	operated	30
8/07	287	263	211	129	2010	2011	31
8/08	326	313	248	147			54
8/09	326	349	283	178			76
8/10	326	433	318	225			
8/11	326	545	351	264			
8/12	326	648	382	283			
Season							
Total	n.a.	n.a.	11,022	6,391	n.a.	n.a.	

Coho Salmon (continued)

George River weir historical cumulative daily coho salmon escapement.											
	Esc Goal Range: none										
Date	Cumulative Daily Passage										
	2002	2003	2004	2005	2006	2007	2008	2009	2010	2011	2012
8/04	52	223	101	94	71	278	147	72	65	347	94
8/05	68	285	143	112	96	661	199	76	77	371	117
8/06	86	383	181	131	103	995	265	92	81	439	146
8/07	92	539	250	153	117	1,430	307	103	99	495	213
8/08	106	652	322	352	125	1,968	530	118	108	562	279
8/09	118	1,159	391	424	133	1,977	736	150	160	641	354
8/10	161	1,499	836	585	158	2,285	1,052	230	196	735	
8/11	176	1,685	913	610	225	2,429	1,460	334	245	847	
8/12	230	1,989	995	737	443	2,762	1,685	392	316	980	
Season											
Total	6,759	33,280	12,499	8,200	11,296	29,317	21,931	12,464	12,961	30,028	

Kogrukluk River weir historical cumulative daily coho salmon escapement.

= years below escapement goal. **Esc Goal Range: 13,000 to 28,000**

Date	Cumulative Daily Passage										
	2002	2003	2004	2005	2006	2007	2008	2009	2010	2011	2012
8/04	39	380	208	189	283	174	122	259	1	32	44
8/05	45	417	281	206	386	233	191	363	1	43	56
8/06	53	470	357	236	453	304	236	464	1	57	70
8/07	59	605	468	273	559	390	263	591	1	73	91
8/08	79	672	563	351	648	469	313	725	1	90	132
8/09	91	941	676	398	713	587	367	875	1	123	156
8/10	99	1,265	893	463	771	678	390	1,097	1	145	
8/11	104	1,292	978	533	977	729	473	1,242	1	188	
8/12	154	2,247	1,218	699	1,133	1,016	683	1,426	1	242	
Season											
Total	14,516	74,604	27,041	24,116	17,011	27,033	29,661	22,981	13,971	24,174	

Tatlawiksuk River weir historical cumulative daily coho salmon escapement.

Esc Goal Range: none

Date	Cumulative Daily Passage										
	2002	2003	2004	2005	2006	2007	2008	2009	2010	2011	2012
8/04	56		605	320	391	323	452	285	42	148	135
8/05	89		819	356	438	424	534	346	83	177	196
8/06	112		1,271	407	590	550	774	474	132	213	261
8/07	158		1,739	487	665	722	894	589	173	258	363
8/08	201		2,176	547	722	940	1,168	679	204	312	489
8/09	280		2,673	719	801	1,204	1,483	929	247	378	587
8/10	353		3,209	837	842	1,513	1,682	1,092	284	459	
8/11	416		3,659	938	896	1,869	1,889	1,128	328	558	
8/12	853		4,381	1,029	998	2,250	2,234	1,184	377	679	
Season											
Total	11,345	n.a.	16,410	7,495	9,453	8,685	11,065	10,148	3,520	12,928	

Coho Salmon (continued)

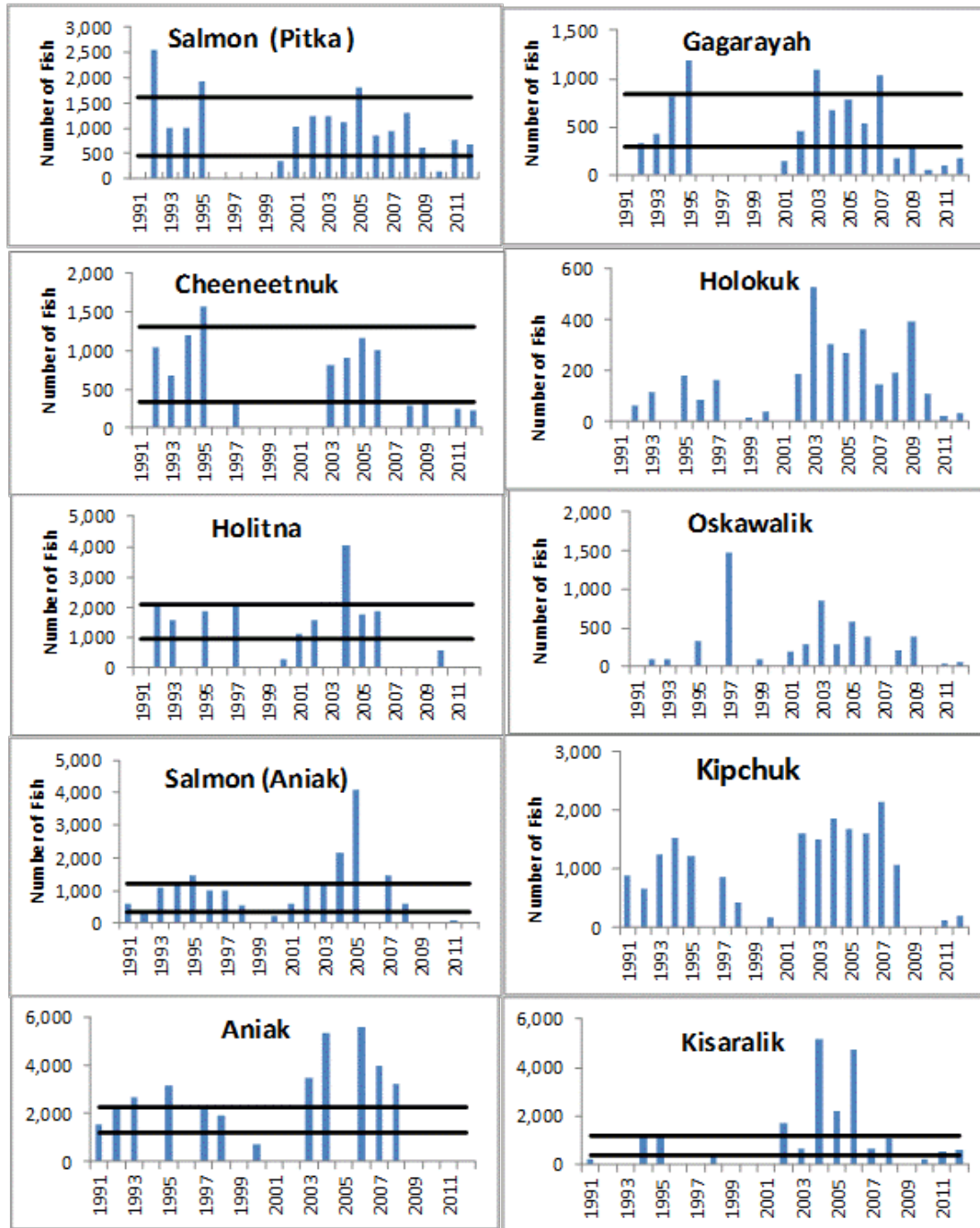
Takotna River weir historical cumulative daily coho salmon escapement.											
Esc Goal Range: none											
Date	Cumulative Daily Passage										
	2002	2003	2004	2005	2006	2007	2008	2009	2010	2011	2012
8/04	2	56	6	24	28	26	9	4	0	2	2
8/05	2	71	10	31	36	41	11	5	0	2	4
8/06	4	98	26	36	44	58	14	13	0	2	4
8/07	4	123	40	38	60	79	18	21	0	3	10
8/08	6	171	59	48	75	105	33	29	0	3	12
8/09	12	211	83	54	100	143	40	52	2	3	13
8/10	18	261	101	60	107	164	51	70	5	4	
8/11	22	346	129	72	219	188	65	85	6	5	
8/12	48	485	207	82	259	218	77	121	12	7	
Season											
Total	3,982	7,146	3,201	2,209	5,556	2,837	2,807	2,704	3,217	4,063	

KUSKOKWIM RIVER AERIAL STREAM SURVEYS

Chinook Salmon

Note: Aerial survey data not available for Holitna and Aniak rivers due to poor survey conditions.

Escapement Goal Range



COMMERCIAL CATCH REPORT:

District 1 Commercial Openings for 2012

Date	Subdistrict	Permits	Hours	Chinook		Sockeye		Chum		Coho	
				Catch	CPUE	Catch	CPUE	Catch	CPUE	Catch	CPUE
7/13/2012	1-B ^a	151	4	96	0.16	1,041	1.72	16,270	26.94	20	0.03
7/16/2012	1-A ^a	46	4	75	0.41	301	1.64	6,773	36.81	5	0.03
7/17/2012	1-B ^a	152	4	64	0.11	707	1.16	11,793	19.40	122	0.20
7/19/2012	1-A ^a	52	4	49	0.24	209	1.00	6,046	29.07	221	1.06
7/20/2012	1-B ^a	157	4	112	0.18	162	0.26	8,596	13.69	511	0.81
7/23/2012	1-A ^a	41	4	18	0.11	135	0.82	3,859	23.53	324	1.98
7/24/2012	1-B ^a	132	4	6	0.01	52	0.10	2,893	5.48	1,562	2.96
7/26/2012	1-A ^a	53	4	11	0.05	31	0.15	3,255	15.35	1,545	7.29
7/27/2012	1-B ^a	139	4	6	0.01	101	0.18	1,847	3.32	2,912	5.24
7/30/2012	1-A ^a	59	4	6	0.03	11	0.05	1,131	4.79	4,815	20.40
7/31/2012	1-B ^a	133	4	4	0.01	33	0.06	631	1.19	3,485	6.55
8/2/2012	1-A ^a	65	4	6	0.02	7	0.03	485	1.87	3,496	13.45
8/3/2012	1-B ^a	127	4	3	0.01	9	0.02	493	0.97	6,958	13.70
8/6/2012	1-A ^a	66	4	-	0.00	8	0.03	204	0.77	5,353	20.28
8/7/2012	1-B ^a	157	4	2	0.00	9	0.01	164	0.26	5,148	8.20
8/9/2012	1-A ^a	64	4	-	0.00	10	0.04	76	0.30	3,630	14.18
Total				458		2,826		64,516		40,107	

Footnotes

^a All Chinook harvested during the commercial opening were not sold but kept as personal use.

^b Incomplete verbal report.

In-season data is preliminary, subject to change