

Kuskokwim River Salmon Management Working Group

1 (800) 315-6338 (MEET) Code: 58756# (KUSKO)

ADF&G Bethel toll free: 1 (855) 933-2433

Meeting Agenda

Date: 06/08/2020

Time: 6:00 p.m.

Place: Teleconference

Time Called to Order:

Chair: LaMont Albertson

ROLL CALL TO ESTABLISH QUORUM:

Upriver Elder:
Downriver Elder:
Commercial Fisher:
Lower River Subsistence:
Middle River Subsistence:
Upper River Subsistence:
Headwaters Subsistence:

QUORUM MET? Yes / No

Processor:
Member at Large:
Sport Fisher:
Western Interior RAC:
Y-K Delta RAC:
KRITFC:
ADF&G:

INTRODUCTIONS:

INVOCATION:

APPROVAL OF MINUTES: *Optional. ADF&G does not prepare official meeting minutes.*

APPROVAL OF AGENDA: *the agenda may be amended at this time.*

USFWS/KRITFC UPDATE:

ADF&G MANAGEMENT ACTIONS UNDER CONSIDERATION:

PEOPLE TO BE HEARD: *Non-Working Group Members*

CONTINUING BUSINESS:

- Subsistence Reports: Lowest River, ONC Inseason Subsistence Report, Lower River, Middle River, Upper River, Headwaters
- Overview of Kuskokwim River salmon run assessment:
 - a. Test Fisheries (Bethel and Aniak):
 - b. Sonar/Weirs/Aerial Surveys/Other:
 - c. Subsistence Division Project Update:
 - d. NVN Report:
- Commercial Catch Report: N/A
- Processor Report: N/A
- Sport Fish Report:
- Intercept Fishery Report: *optional*
- Weather Forecast:
- Discussion of ADF&G Management considerations and discussion of possible alternatives (recommendations from the Working Group):
- Motion for Discussion and Action:

OLD BUSINESS:

NEW BUSINESS:

COMMENTS FROM WORKING GROUP MEMBERS:

NEXT MEETING DATE: _____ **Time:** _____ **Place:** _____

Informational Packet

Information Packets *ARE*:

- **Intended to help inform Working Group discussions.**
- **To be viewed and used in context with Working Group meetings only.**

Packets *ARE NOT*:

- **To be viewed as standalone documents.**
- **A final say on fisheries management decisions.**

Please use this information responsibly:

Packet information is an incomplete snapshot of an ongoing discussion and changing conditions. Packet information should not be reproduced for any purpose other than to describe Working Group meeting discussions.

Misuse of Packet information can contribute to misunderstandings that can **cause harm to salmon users** and potentially **damage salmon resources**.

Ask Questions: ADF&G staff will be happy to answer biology and management questions. Please call **1-855-933-2433** to reach ADF&G Kuskokwim Area staff.

Attend Meetings: Each Working Group meeting is announced at least 48 hours prior to time and date of meeting. In addition, each meeting is recorded. Recordings can be found here:
http://www.adfg.alaska.gov/index.cfm?adfg=commercialbyarea_kuskokwim.kswg

Viewing the information packet while listening to meetings/recordings will provide a better understanding of the information presented in this packet.

**Thank you,
Nick Smith
Working Group Coordinator**

Orutsararmiut Native Council (ONC) Inseason Harvest Monitoring Weekly Report

June 8, 2020

Summary of Interview Activities

ONC fisheries staff contacted prior year Bethel area fish camp users and was granted permission by 74 fish camps to continue conducting surveys this season. All ONC fisheries staff will wear masks when conducting surveys and maintain social distancing. We will continue our efforts in seeking authorization to conduct surveys with the other camps that we've been unable to contact thus far. The majority of fish camps we've contacted are not yet actively fishing.

Comments from interviewees at the boat harbor and fish camp from the past two set net opportunities include the following:

- Desire to fish more
- Better if people were able to drift
- Keep the fishery open
- Chinook salmon are fishing deep and being caught in the main channel
- Lots of mosquitoes suggests there will be lots of fish
- Management is trying to starve the people
- Too early for fishing

Table 1. Average number of salmon harvested, net length and mesh size range from surveyed Bethel area fish camps and Bethel boat harbor during the June 3-4 fishing opportunity.

Data Source	Number of Surveys Conducted	Average Chinook Salmon Harvest	Average Chum Salmon Harvest	Average Sockeye Salmon Harvest	Average other harvest	Net Length Range (ft.)	Mesh Size Range (in.)
Bethel Boat Harbor	29	<1	0	0	<1	30-63 ft.	4-6"

Table 2. Average number of salmon harvested, net length and mesh size range from surveyed Bethel area fish camps and Bethel boat harbor during the June 6-7 fishing opportunity.

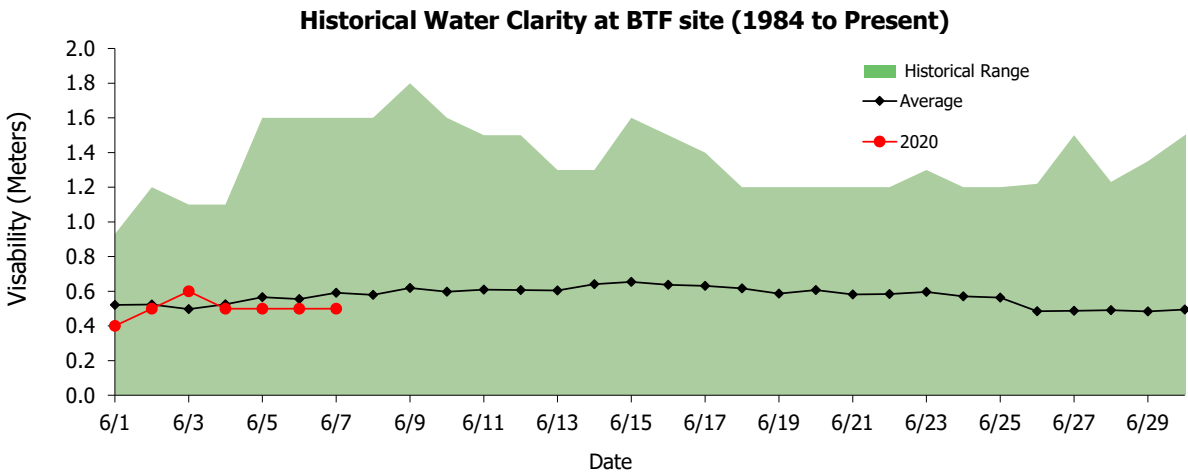
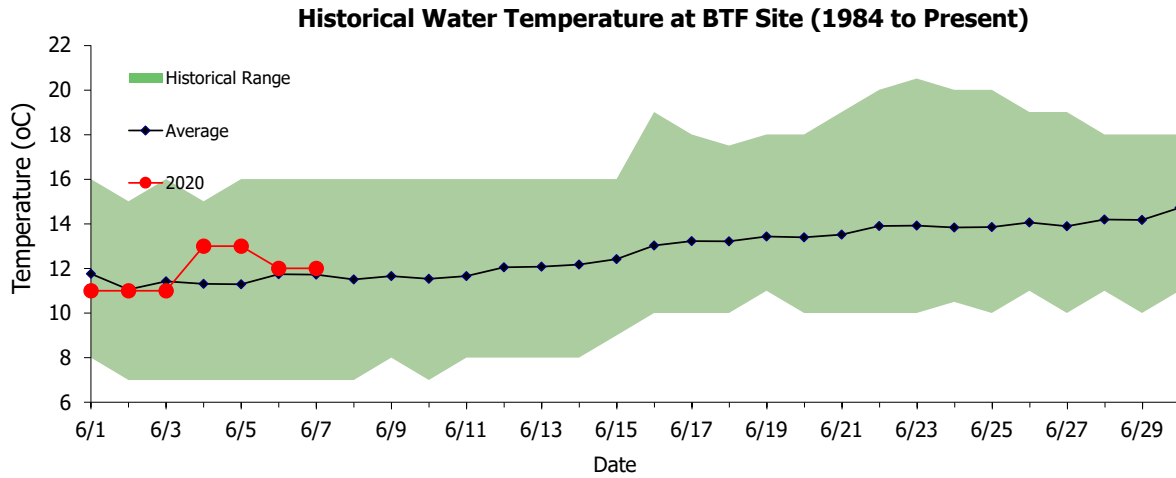
Data Source	Number of Surveys Conducted	Average Chinook Salmon Harvest	Average Chum Salmon Harvest	Average Sockeye Salmon Harvest	Average other harvest	Net Length Range (ft.)	Mesh Size Range (in.)
Bethel Area Fish Camps	5	3.4	<1	0	<1	25-60 ft.	4-5.88"
Bethel Boat Harbor	28	2.3	<1	<1	<1	30-60 ft.	4-6"

Chinook Salmon Age-Sex-Length (ASL) Sampling Program Recruitment

Thus far this season, there are 33 interested samplers from the Bethel community. We are continuing recruitment efforts at the Bethel boat harbor, in the community & at Bethel area fish camps.

Fish Distribution

Thus far (May 27-June 7), we've delivered 18 Chinook salmon, 2 chum salmon and 4 sheefish to Bethel Area Elders. These fish were caught by the Alaska Department of Fish & Game Bethel Test Fishery.



Crooked Creek water gauge is out of operation.

Kuskokwim River Salmon Assessment Update

6/7/2020



This document presents the key assessment information considered by managers in-season. The production of this document is a collaborative effort between USFWS and ADF&G. **All data and analyses contained are preliminary and are subject to change, so please make interpretations carefully.**

If you have any questions about the content, please contact Gary Decossas (USFWS; gary_decossas@fws.gov) or Sean Larson (ADF&G; sean.larson@alaska.gov). Major credit for the development of this data packet belongs to Benjamin Staton.

Table of Contents:

Bethel Test Fishery Summaries

- Page 2: [Chinook Salmon](#)
- Page 3: [Chum Salmon](#)

Species Composition Summaries

- Page 4: [Chum/Sockeye:Chinook Salmon Ratio](#)
- Page 5: [Percent Composition](#)

Appendices

- Page 8: [Chinook Salmon](#)
- Page 9: [Chum Salmon](#)

Abbreviations:

- BTF: Bethel Test Fishery
- ATF: Aniak Test Fishery
- CPUE: Catch-per-unit-effort
- EOS: End-of-Season

To view escapement information, please visit the **ADF&G Kuskokwim River Fish Counts** page:

- <http://www.adfg.alaska.gov/index.cfm?adfg=commercialbyareakuskokwim.salmon#fishcounts>

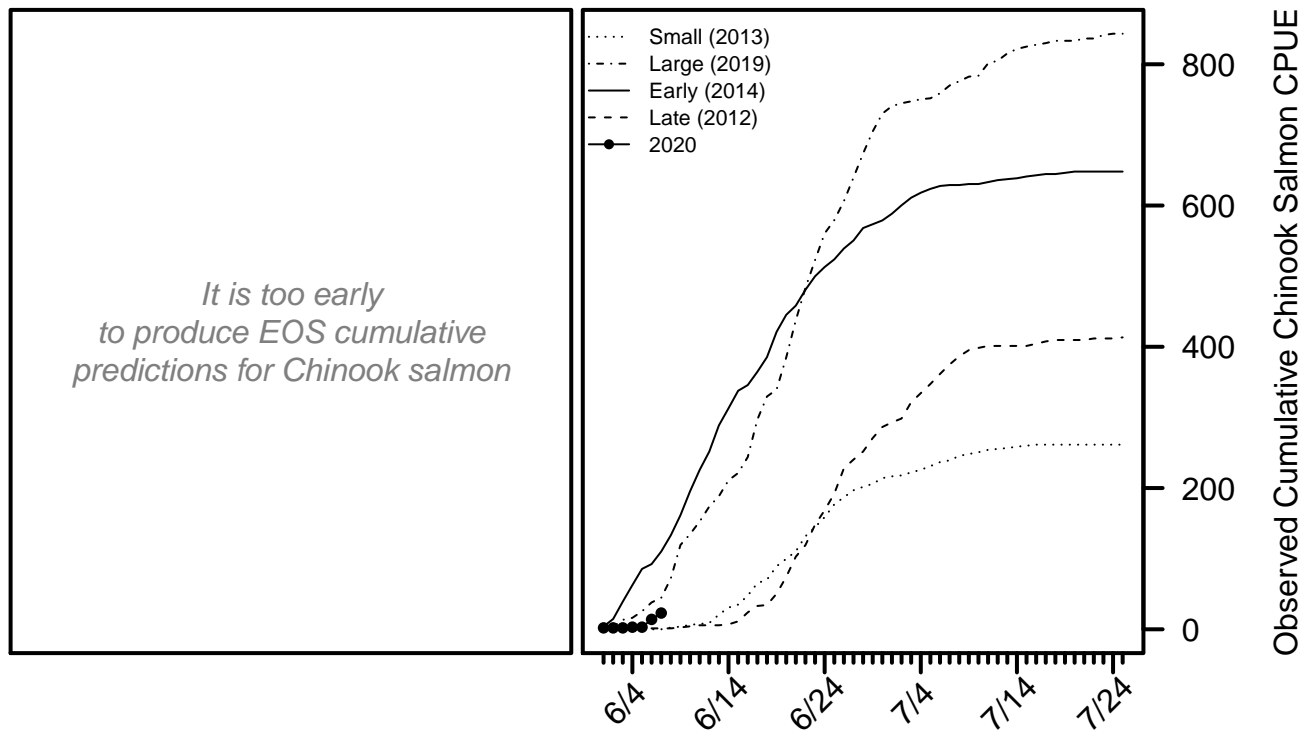
For the most up-to-date information regarding fishing opportunities please visit:

- USFWS: https://www.fws.gov/refuge/yukon_delta/wildlife_and_habitat/dailyupdate.html
- ADF&G: <http://www.adfg.alaska.gov/index.cfm?adfg=cfnews.main>

Chinook Salmon BTF Summary (6/7)

- The BTF daily CPUE was **9**.
- The BTF cumulative CPUE is now **23**.
- **50%** years since 2008 fell below this cumulative CPUE on this date.
- **3%** of the run is complete based on historical average run timing.
- **1% - 6%** of the run is complete based the central 50% of all historical run timing scenarios.
- **6% - 13%** of the run is expected to pass Bethel in the next 5 days.
- Over the last 3 days, Chinook salmon made up **87%** of the BTF catches, compared to **61%** on average.

Chinook Salmon Figure 1. *Left:* will show predicted cumulative EOS BTF CPUE according to various run timing scenarios when enough data have been collected. *Right:* The cumulative BTF CPUE from 2020 plotted along with four previous years intended to represent a range of early/late and small/large index values.



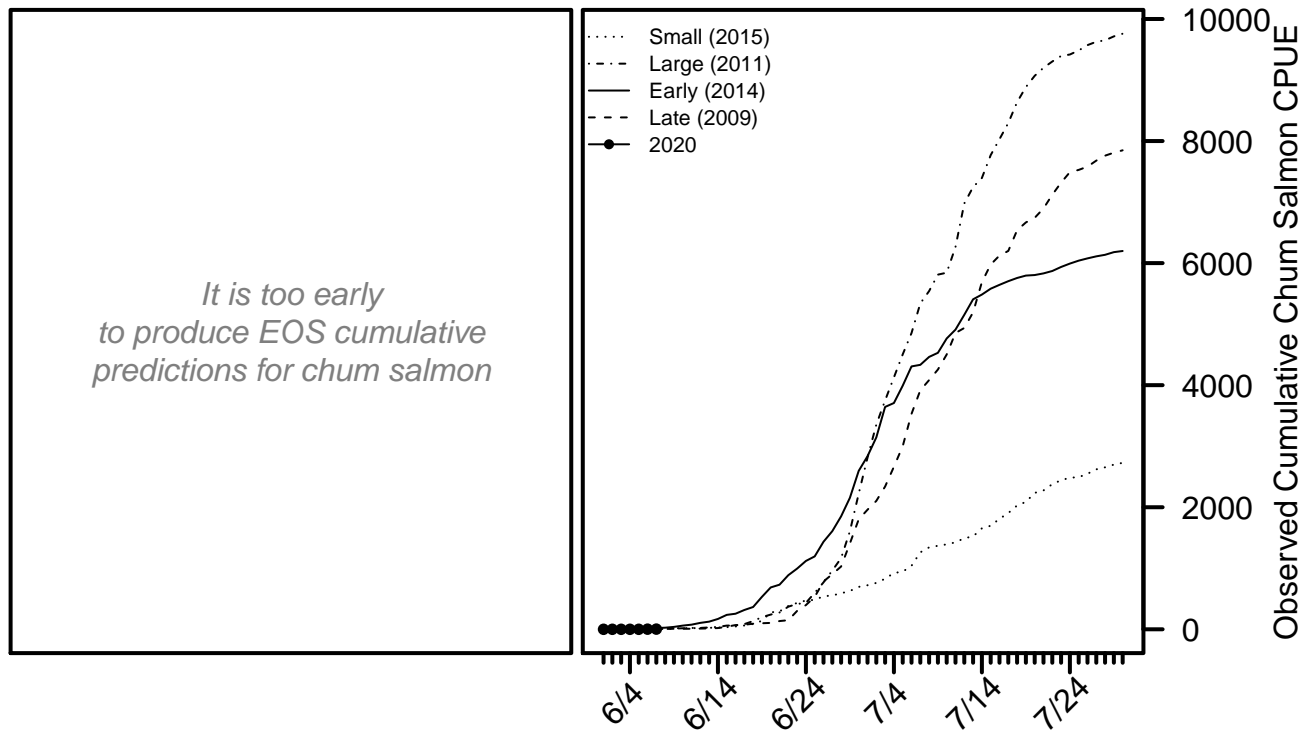
For more detailed information, see the [Chinook salmon appendix](#) at the end of this document.

[Return to Table of Contents](#)

Chum Salmon BTF Summary (6/7)

- The BTF daily CPUE was **1**.
- The BTF cumulative CPUE is now **3**.
- **50%** years since 2008 fell below this cumulative CPUE on this date.
- **<1%** of the run is complete based on historical average run timing.
- **<1%** - **<1%** of the run is complete based the central 50% of all historical run timing scenarios.
- **0%** - **1%** of the run is expected to pass Bethel in the next 5 days.
- Over the last 3 days, chum salmon made up **13%** of the BTF catches, compared to **32%** on average.

Chum Salmon Figure 1. *Left:* will show predicted cumulative EOS BTF CPUE according to various run timing scenarios when enough data have been collected. *Right:* The cumulative BTF CPUE from 2020 plotted along with four previous years intended to represent a range of early/late and small/large index values.



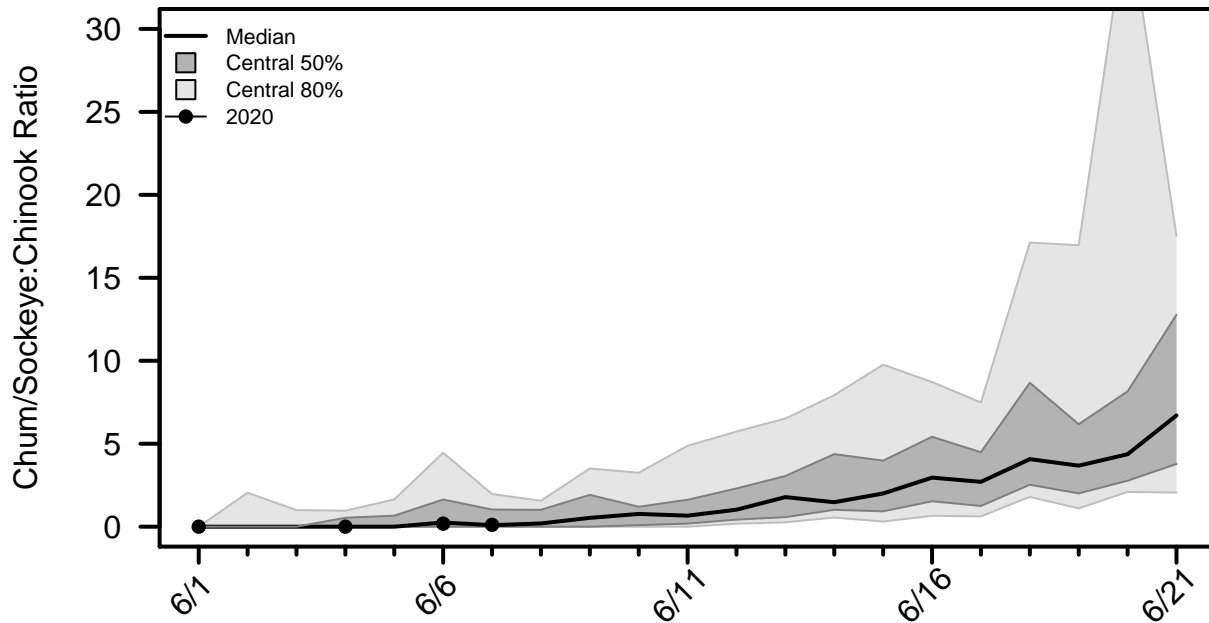
For more detailed information, see the [chum salmon appendix](#) at the end of this document.

[Return to Table of Contents](#)

Chum/Sockeye:Chinook Salmon Ratio

This ratio is calculated by dividing the total number of chum and sockeye salmon counted by the number of Chinook salmon counted by a project each day. A value of zero indicates Chinook salmon were counted that day, but not chum or sockeye salmon. A missing value on a day the project operated indicates no Chinook salmon were counted that day.

Species Ratio Figure 1. Time series of the species ratio with historical quantiles shown as grey regions and the ratio time series for 2020 shown with points connected by lines.



Ratio Table 1. A subset of the species ratios displayed in **Ratio Figure 1**, including the ratios from the ATF.

Date	2020 BTF	BTF Median	BTF Lower 10%	BTF Upper 10%	2020 ATF
6/4	0	0	0	0.96	–
6/5	–	0	0	1.64	–
6/6	0.18	0.25	0	4.46	–
6/7	0.11	0.09	0	1.97	–
6/8		0.2	0	1.57	
6/9		0.53	0	3.51	
6/10		0.77	0	3.25	

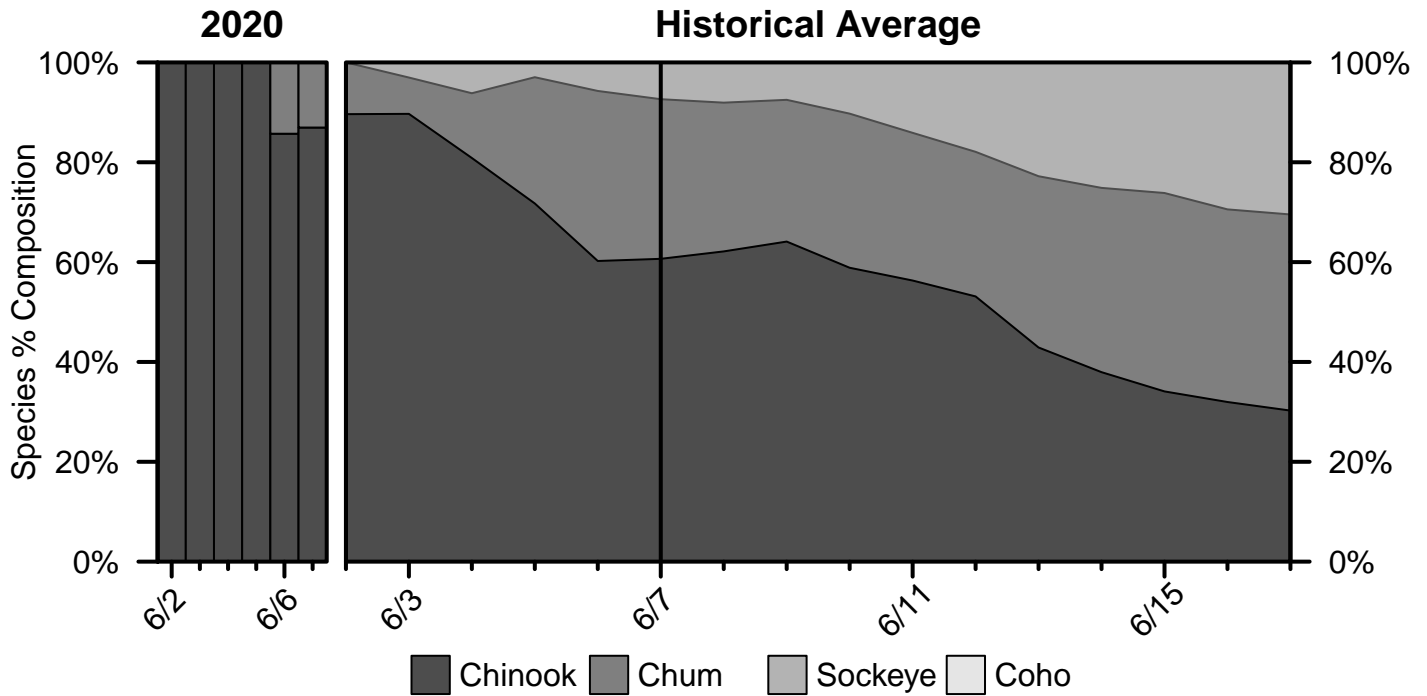
Ratio Table 2. The percent of previous years in which a given species ratio was exceeded at least once before a certain day in the BTF.

Date	Ratio > 1	Ratio > 3	Ratio > 5	Ratio > 10	Ratio > 20
6/4	14%	3%	3%	0%	0%
6/5	28%	8%	3%	0%	0%
6/6	42%	17%	8%	0%	0%
6/7	50%	19%	8%	0%	0%
6/8	56%	22%	8%	0%	0%
6/9	69%	28%	8%	3%	3%
6/10	72%	36%	11%	3%	3%

[Return to Table of Contents](#)

Percent Composition by Salmon Species

Percent Composition Figure 1. Species percent composition in the BTF from 2020 and based on the historical average. The composition presented on each day represents the average composition over the past 2 days.



[Return to Table of Contents](#)

Chinook Salmon Appendix

Chinook Salmon Table A1. Cumulative CPUE from the BTF.

Date	2020	2019	2018	2017	2016	5-Yr Avg.	2008 - 2019 Avg.
6/4	3	16	11	5	39	18	15
6/5	3	25	13	5	53	24	21
6/6	14	38	13	5	60	30	25
6/7	23	45	21	8	79	41	33
6/8		72	21	8	89	50	42
6/9		119	29	9	114	70	54
6/10		135	38	12	126	80	64
EOS		848	667	374	687	640	575

Chinook Salmon Table A2. Cumulative CPUE from the ATF.

Date	2020	2019	2018	2017	2016
6/4	0	0	8	8	234
6/5	0	15	8	8	251
6/6	0	21	8	24	300
6/7	0	21	16	40	344
6/8		27	16	48	397
6/9		27	23	71	466
6/10		33	23	101	589
EOS		1,691	820	6,508	2,729

Chinook Salmon Table A3. Percent of run complete according to various historical run timing scenarios from the BTF.

Timing	Midpoint	6/7 Cumulative %
Earliest	6/13	18%
Early 10%	6/16	11%
Early 25%	6/20	7%
Median	6/21	3%
Late 25%	6/23	1%
Late 10%	6/26	<1%
Latest	7/2	<1%

[Return to Table of Contents](#)

Chum Salmon Appendix

Chum Salmon Table A1. Cumulative CPUE from the BTF.

Date	2020	2019	2018	2017	2016	5-Yr Avg.	2008 - 2019 Avg.
6/4	0	0	7	0	0	1	2
6/5	0	0	7	0	0	1	3
6/6	2	0	7	3	3	3	4
6/7	3	2	10	5	3	7	6
6/8		2	17	8	16	12	9
6/9		2	20	11	16	13	12
6/10		7	22	24	18	18	17
EOS		4,989	8,212	6,785	3,894	5,365	6,537

Chum Salmon Table A2. Cumulative CPUE from the ATF.

Date	2020	2019	2018	2017	2016
6/4	0	0	0	0	5
6/5	0	0	8	8	5
6/6	0	0	8	8	5
6/7	0	0	8	8	12
6/8		0	8	8	12
6/9		0	8	24	19
6/10		0	8	31	19
EOS		1,051	10,277	11,588	5,304

Chum Salmon Table A3. Percent of run complete according to various historical run timing scenarios from the BTF.

Timing	Midpoint	6/7 Cumulative %
Earliest	6/22	1%
Early 10%	6/30	<1%
Early 25%	7/2	<1%
Median	7/5	<1%
Late 25%	7/7	<1%
Late 10%	7/10	<1%
Latest	7/17	<1%

[Return to Table of Contents](#)