

Kuskokwim River Salmon Management Working Group

1 (800) 315-6338 (MEET) Code: 58756# (KUSKO)

ADF&G Bethel toll free: 1 (855) 933-2433

Meeting Agenda

Date: 08/19/2015

Time: 10:00am

Place: Bethel

Time Called to Order:

Chair: Bev Hoffman

Time Adjourned:

ROLL CALL TO ESTABLISH QUORUM:

Upriver Elder:

Downriver Elder:

Commercial Fisher:

Lower River Subsistence:

Middle River Subsistence:

Upper River Subsistence:

Headwaters Subsistence:

QUORUM MET? Yes / No

Processor:

Member at Large:

Sport Fisher:

Western Interior RAC:

Y-K Delta RAC:

ADF&G:

INTRODUCTIONS:

INVOCATION:

APPROVAL OF AGENDA: *the agenda may be amended at this time.*

APPROVAL OF MINUTES: *Optional. ADF&G does not prepare official meeting minutes.*

ADF&G MANAGEMENT ACTIONS UNDER CONSIDERATION:

PEOPLE TO BE HEARD:

CONTINUING BUSINESS:

- Overview of Kuskokwim River salmon run assessment\ discussion of ADF&G considerations:
 - a. Test Fisheries (Bethel and Aniak):
 - b. Weirs/~~Mark Recapture/Aerial Surveys/Other:~~
- Subsistence Reports: Lowest river, ~~ONC Inseason Subsistence Report~~, Lower River, Middle River, Upper River, Headwaters.
 - USFWS Subsistence Report
- Commercial Catch Report:
- Processor Report:
- Sport Fish Report:
- Intercept Fishery Report: *optional*
- Weather Forecast:
- Discussion of ADF&G Management considerations and discussion of possible alternatives (recommendations from the Working Group):
- Motion for Discussion and Action:

OLD BUSINESS:

NEW BUSINESS:

COMMENTS FROM WORKING GROUP MEMBERS:

NEXT MEETING DATE: _____ Time: _____ Place: _____

Informational Packet

Information Packets *ARE*:

- **Intended to help inform Working Group discussions.**
- **To be viewed and used in context with Working Group meetings only.**

Packets *ARE NOT*:

- **To be viewed as standalone documents.**
- **A final say on fisheries management decisions.**

Please use this information responsibly:

Packet information is an incomplete snapshot of an ongoing discussion and changing conditions. Packet information should not be reproduced for any purpose other than to describe Working Group meeting discussions.

Misuse of Packet information can contribute to misunderstandings that can **cause harm to salmon users** and potentially **damage salmon resources**.

Ask Questions: ADF&G staff will be happy to answer biology and management questions. Please call **1-855-933-2433** to reach ADF&G Kuskokwim Area staff.

Attend Meetings: Each Working Group meeting is announced at least 48 hours prior to time and date of meeting. In addition, each meeting is recorded. Recordings can be found here:
http://www.adfg.alaska.gov/index.cfm?adfg=commercialbyarea_kuskokwim.kswg

Viewing the information packet while listening to meetings/recordings will provide a better understanding of the information presented in this packet.

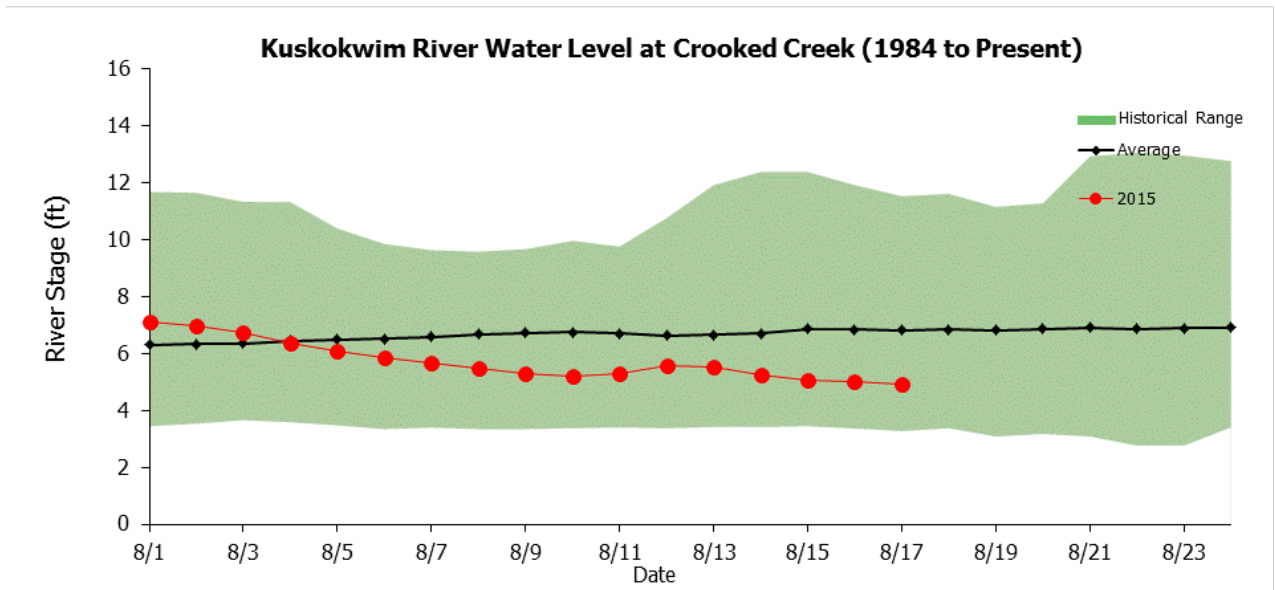
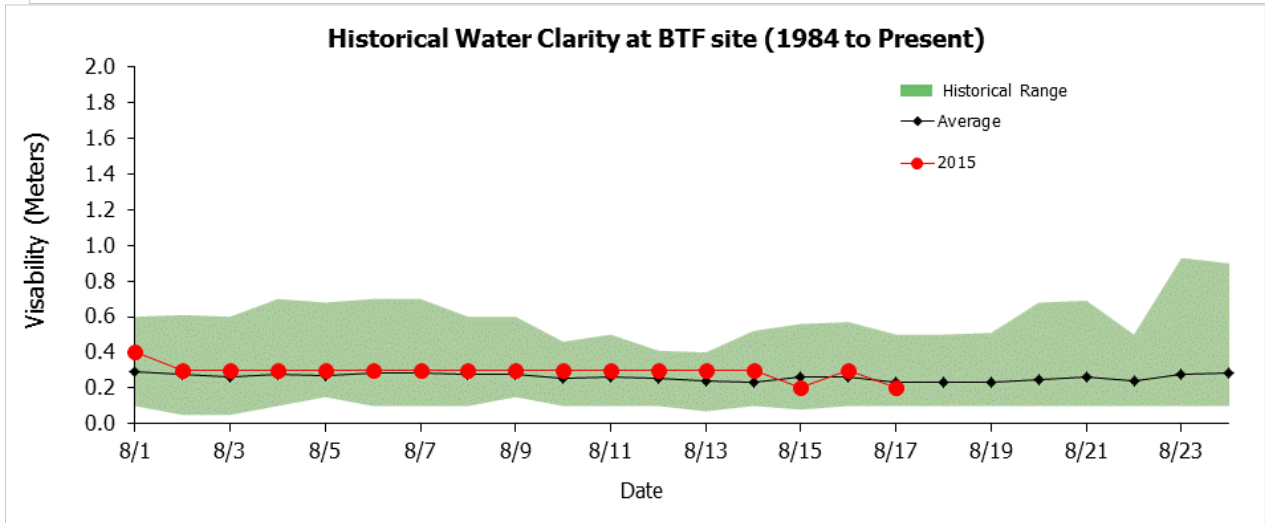
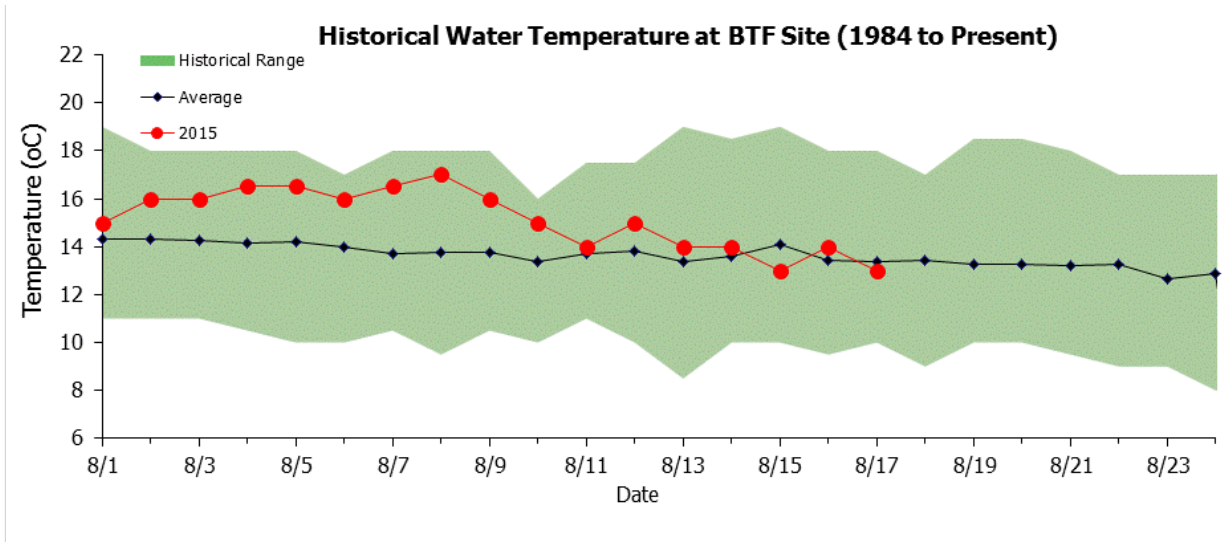
Thank you.

Jennifer Peeks

Chris Shelden

Working Group coordinators

Informational Packet



Informational Packet

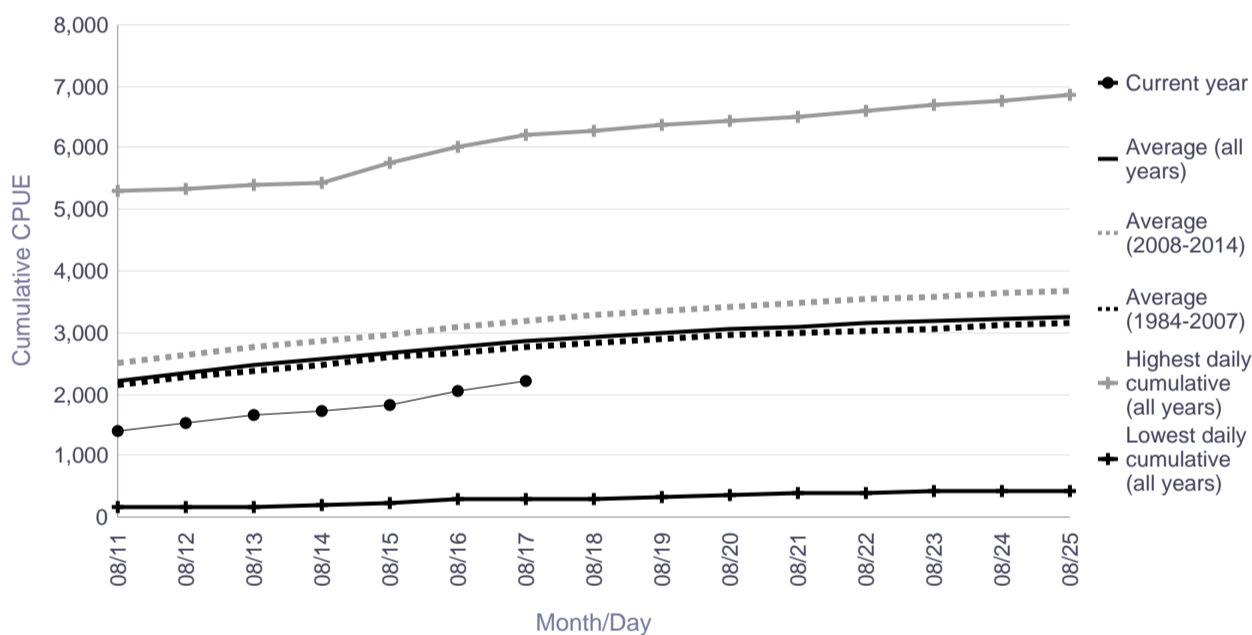
*To access BTF and weir data online, please visit: <http://www.adfg.alaska.gov/index.cfm?adfg=commercialbyareakuskokwim.salmon#fishcounts>

Bethel Test Fishery Coho Salmon Cumulative CPUE Index

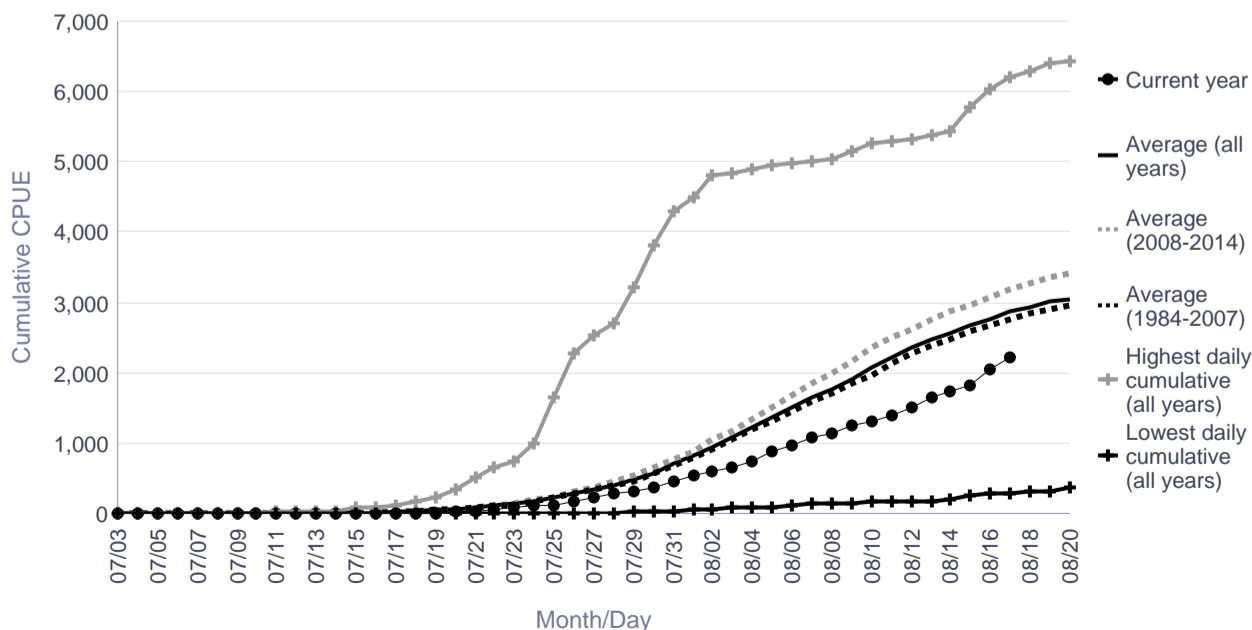
Date	Lowest daily cumulative (all years)	Average (all years)	Average (1984-2007)	Average (2008-2014)	Highest daily cumulative (all years)	Current year
08/11	164	2,217	2,134	2,503	5,289	1,396
08/12	180	2,354	2,276	2,623	5,328	1,523
08/13	184	2,471	2,387	2,757	5,391	1,666
08/14	192	2,573	2,487	2,871	5,435	1,732
08/15	247	2,685	2,604	2,961	5,762	1,837
08/16	296	2,771	2,681	3,080	6,030	2,055
08/17	303	2,864	2,769	3,192	6,197	2,214
08/18	312	2,943	2,846	3,278	6,276	
08/19	326	3,007	2,906	3,353	6,388	
08/20	362	3,060	2,956	3,415	6,436	
08/21	381	3,105	2,998	3,478	6,500	
08/22	410	3,149	3,038	3,533	6,605	
08/23	413	3,185	3,072	3,579	6,693	
08/24	417	3,225	3,109	3,628	6,774	
08/25	423	3,262	3,147	3,664	6,849	

	Lowest CPUE	Average CPUE (all years)	Average CPUE (1984-2007)	Average CPUE (2008-2014)	Highest CPUE
Season Total	423	3,294	3,203	3,606	7,183

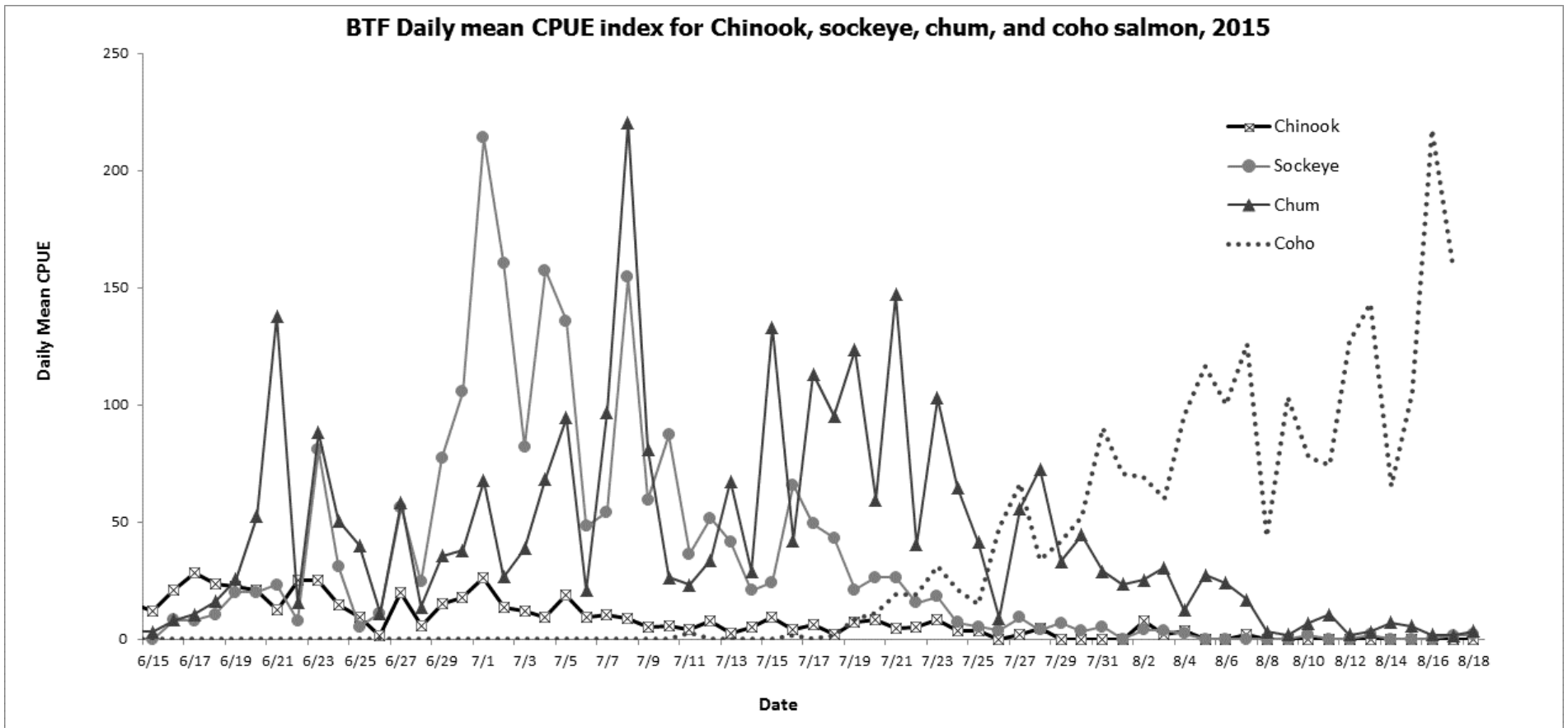
Focused Two-Week Data View



Season Total Overview



Informational Packet



Informational Packet

*To access BTF and weir data online, please visit: <http://www.adfg.alaska.gov/index.cfm?adfg=commercialbyareakuskokwim.salmon#fishcounts>

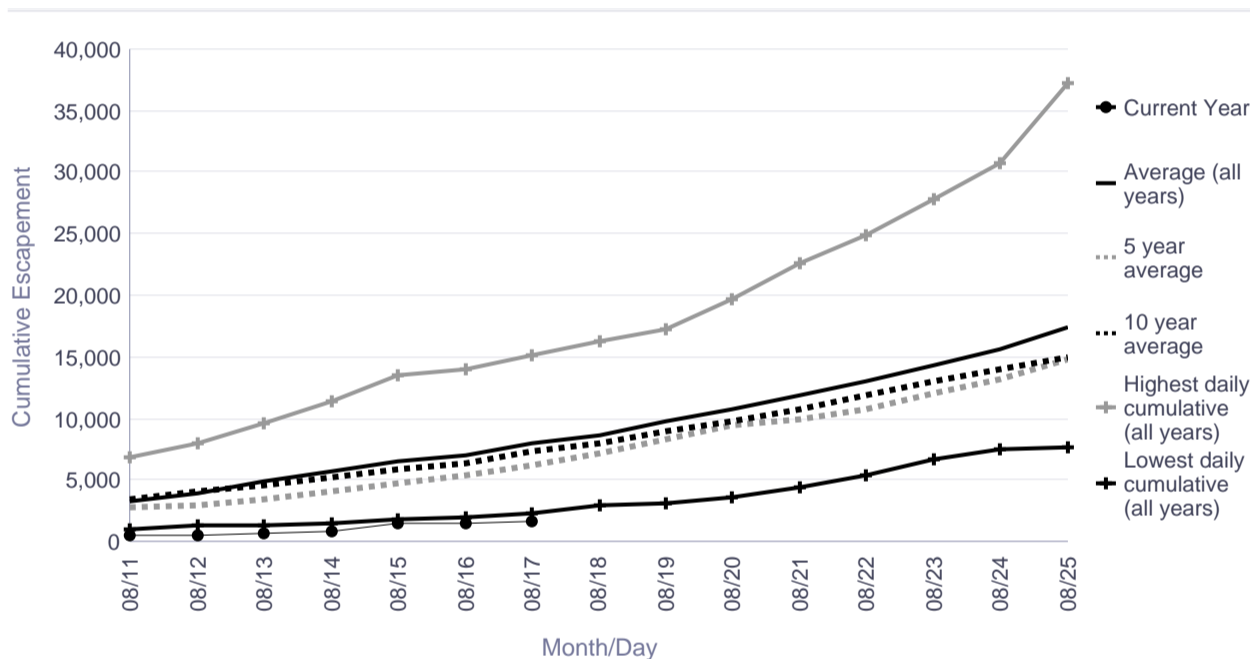
Kwethluk River Salmon Monitoring Project Cumulative Daily Passage of Coho Salmon

Escapement Goal Range: >19,000

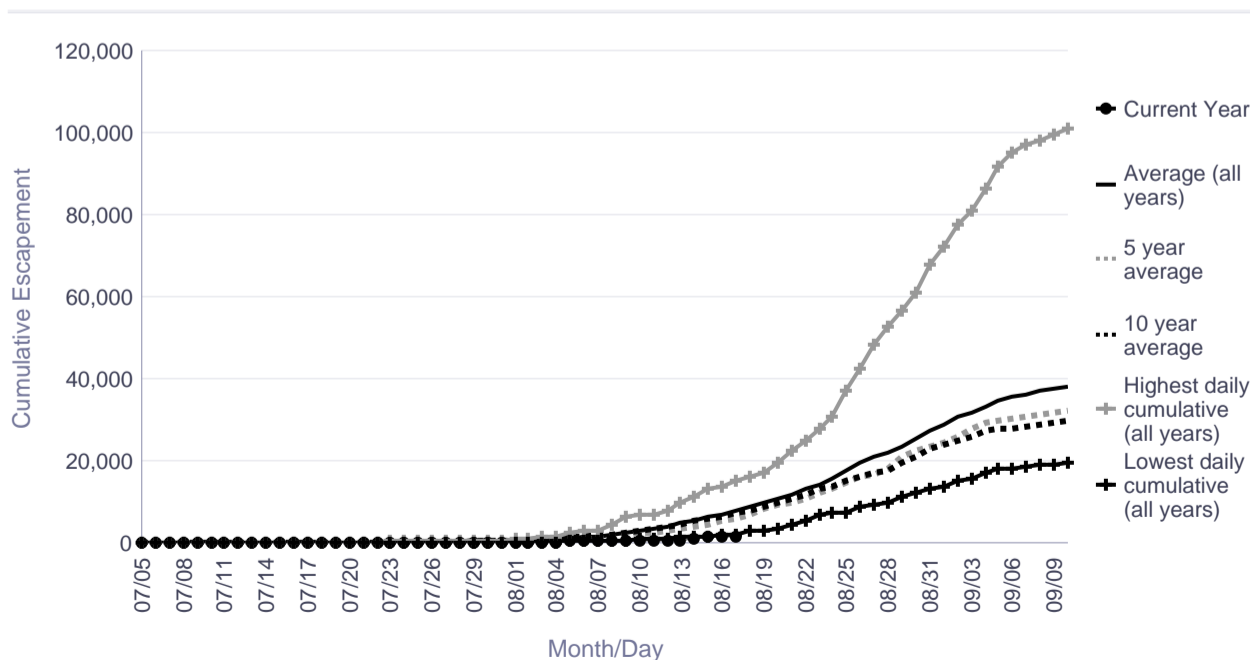
Date	Lowest daily cumulative (all years)	Average (all years)	5 year average	10 year average	Highest daily cumulative (all years)	Current Year
08/11	971	3,341	2,738	3,434	6,772	444
08/12	1,271	3,950	2,956	4,090	7,908	459
08/13	1,351	4,837	3,364	4,637	9,602	697
08/14	1,452	5,636	4,014	5,254	11,368	823
08/15	1,734	6,479	4,677	5,884	13,482	1,425
08/16	1,898	6,945	5,313	6,331	13,959	1,507
08/17	2,230	7,940	6,130	7,264	15,178	1,604
08/18	2,881	8,710	7,149	7,940	16,217	
08/19	3,190	9,839	8,293	8,981	17,257	
08/20	3,580	10,762	9,457	9,834	19,664	
08/21	4,425	11,831	10,002	10,705	22,589	
08/22	5,411	13,095	10,823	11,858	24,927	
08/23	6,716	14,360	12,075	13,086	27,877	
08/24	7,437	15,552	13,174	13,932	30,656	
08/25	7,588	17,476	14,779	14,981	37,170	

	Lowest Count	Average Count	5 Year Average	10 Year Average	Highest Count
Season Total	19,473	38,932	32,420	29,990	107,789

Focused Two-Week Data View



Season Total Overview



Informational Packet

*

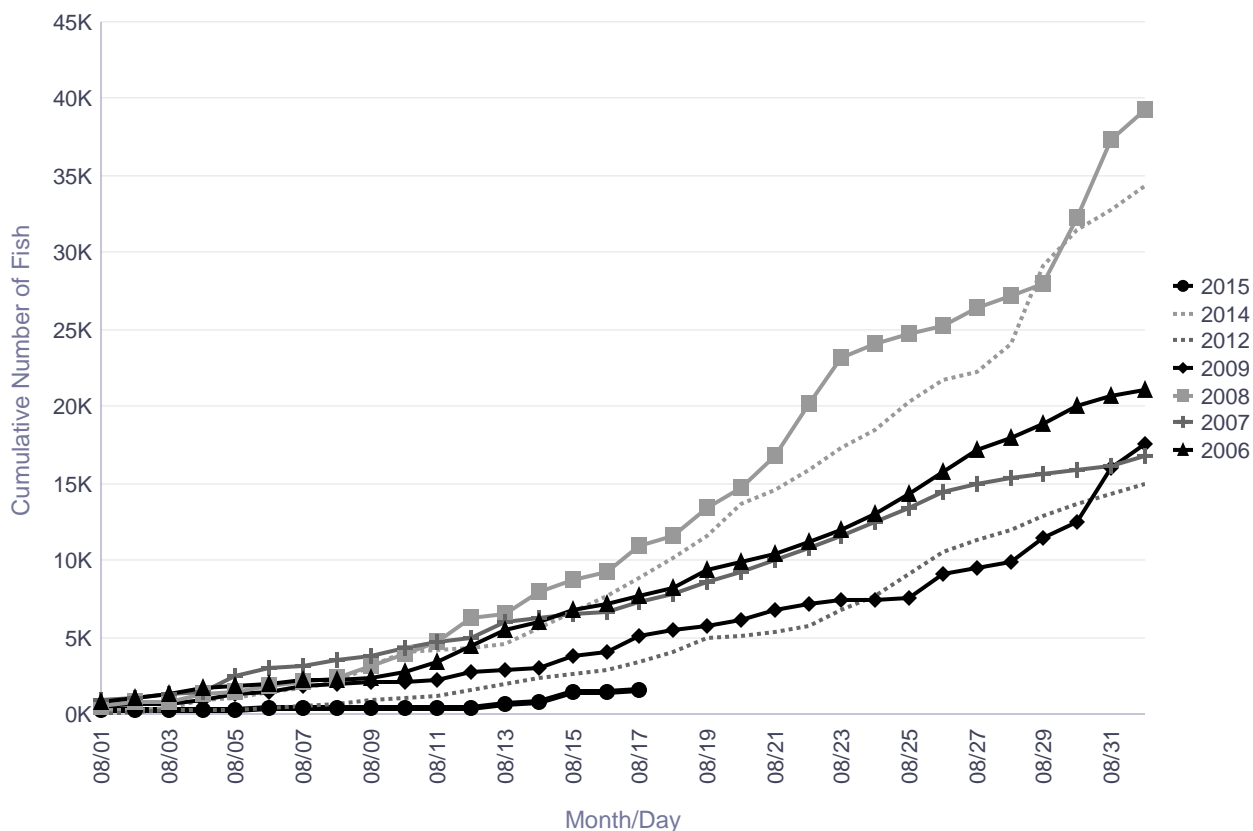
Kwethluk River Weir Historical Cumulative Daily Passage of Coho Salmon

	Cumulative Daily Passage									
Date	2006	2007	2008	2009	2010	2011	2012	2013	2014	2015
08/15	6,772	6,463	8,679	3,833			2,583		6,667	1,425
08/16	7,133	6,679	9,266	4,082			2,888		7,634	1,507
08/17	7,712	7,276	11,003	5,133			3,339		8,817	1,604
08/18	8,266	7,870	11,544	5,462			4,038		10,156	
08/19	9,330	8,585	13,440	5,745			4,929		11,554	
08/20	9,870	9,293	14,657	6,071			5,149		13,662	
08/21	10,461	10,023	16,727	6,814			5,330		14,570	
08/22	11,228	10,765	20,173	7,136			5,679		15,863	

Escapement Goal Range: > 19,000
Highlighted years below are when escapement goal was achieved or exceeded.

	2006	2007	2008	2009	2010	2011	2012	2013	2014	2015
Season Total	25,667	19,473	48,049	21,911			20,895		43,945	

Kwethluk River Coho



There are no comments for the past three days.

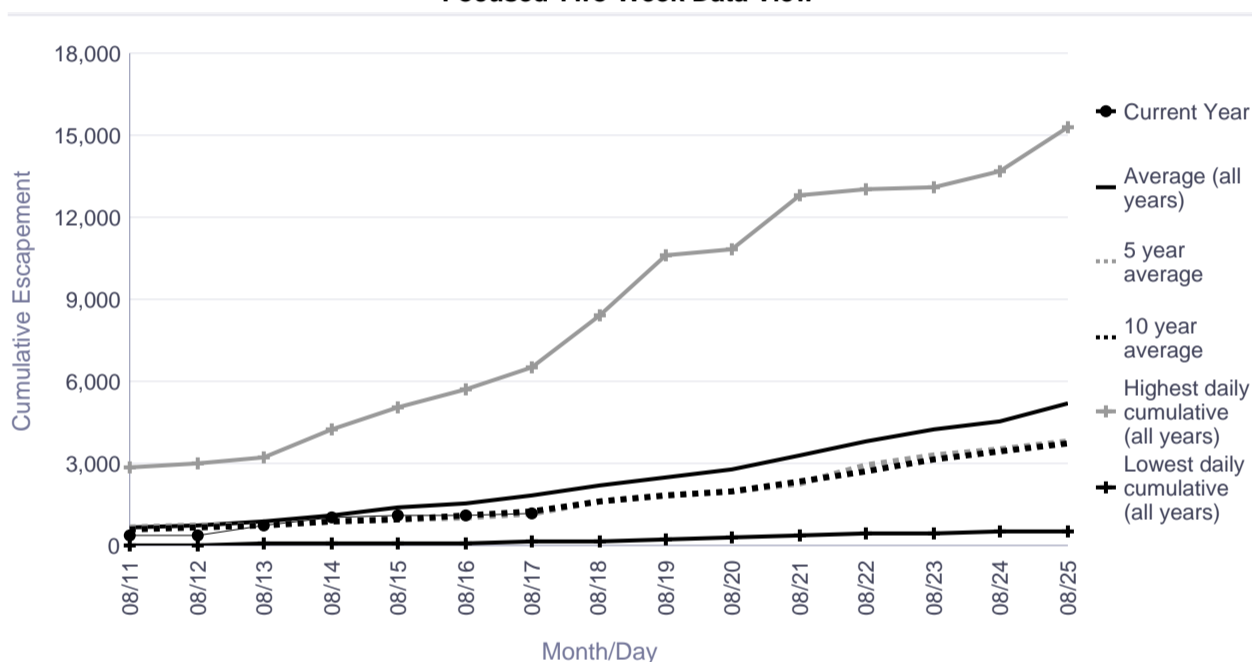
Informational Packet

Tuluksak River Salmon Monitoring Project Cumulative Daily Passage of Coho Salmon

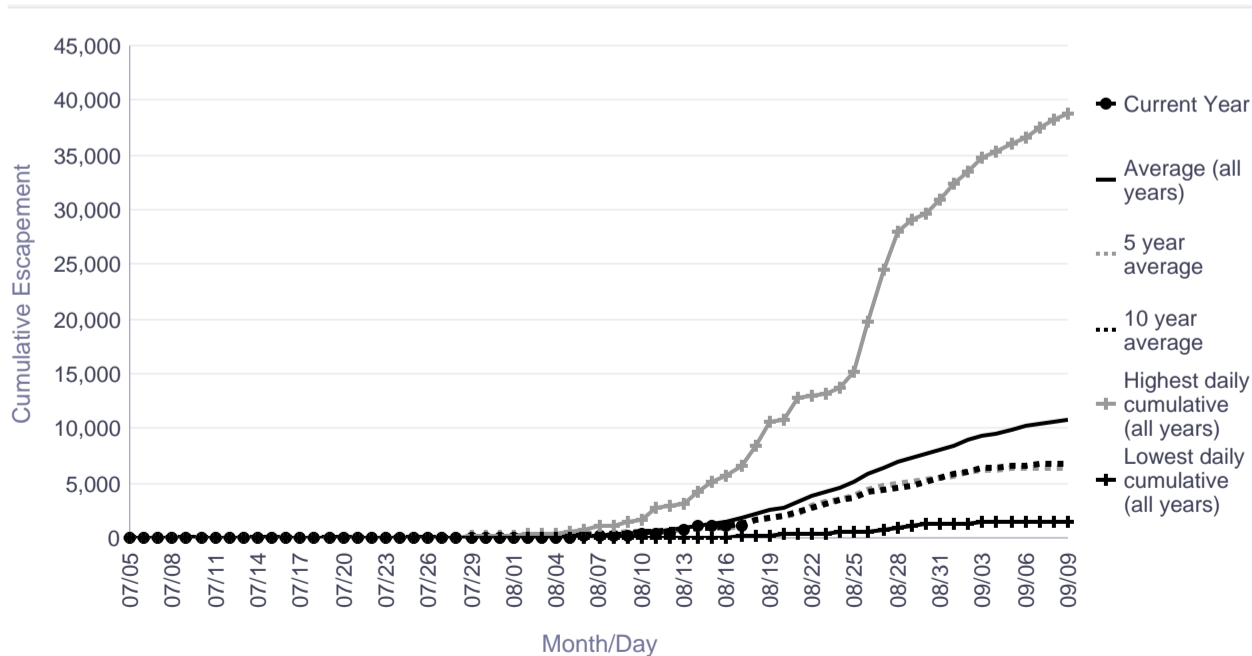
Date	Lowest daily cumulative (all years)	Average (all years)	5 year average	10 year average	Highest daily cumulative (all years)	Current Year
08/11	18	651	648	581	2,850	391
08/12	34	752	727	684	3,007	409
08/13	53	876	770	752	3,211	760
08/14	73	1,122	857	881	4,233	1,045
08/15	75	1,377	930	981	5,087	1,109
08/16	100	1,569	1,000	1,111	5,741	1,109
08/17	126	1,834	1,163	1,253	6,547	1,152
08/18	181	2,194	1,648	1,614	8,447	
08/19	247	2,533	1,863	1,809	10,589	
08/20	317	2,766	1,991	2,017	10,855	
08/21	385	3,275	2,309	2,343	12,813	
08/22	426	3,828	2,907	2,752	13,040	
08/23	472	4,270	3,294	3,176	13,114	
08/24	491	4,556	3,541	3,416	13,707	
08/25	558	5,189	3,819	3,748	15,254	

	Lowest Count	Average Count	5 Year Average	10 Year Average	Highest Count
Season Total	1,525	11,009	6,555	6,895	41,071

Focused Two-Week Data View



Season Total Overview



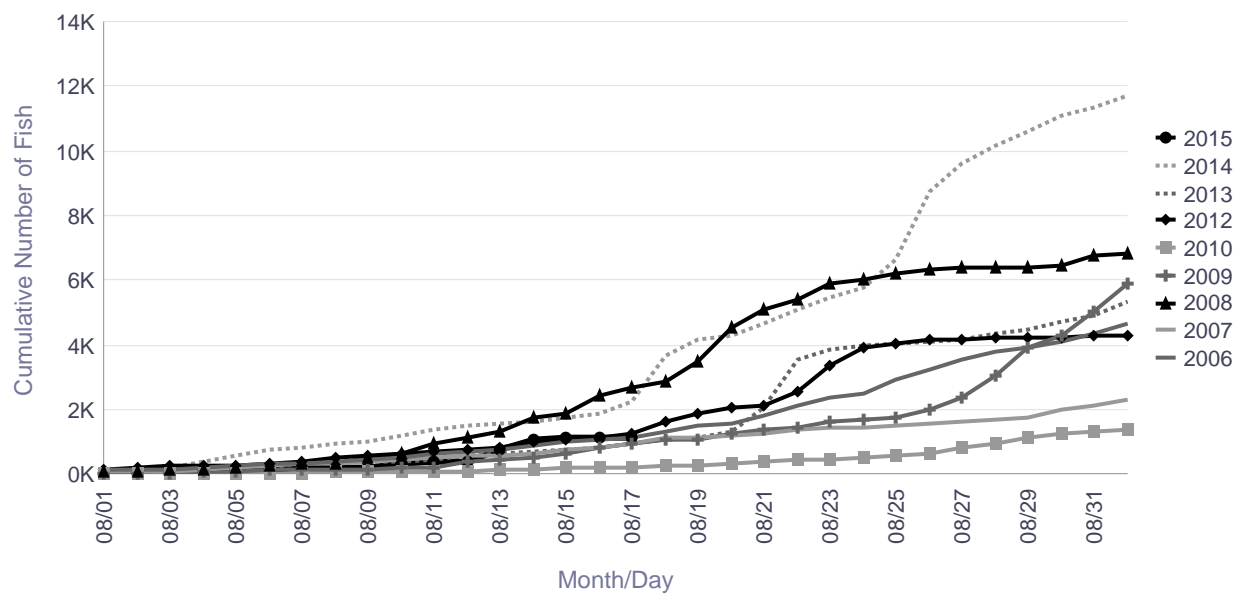
Informational Packet

Tuluksak River Salmon Monitoring Project Cumulative Daily Passage of Coho Salmon

Cumulative Daily Passage										
Date	2006	2007	2008	2009	2010	2011	2012	2013	2014	2015
08/15	994	741	1,879	638	176		1,086	736	1,720	1,109
08/16	1,054	811	2,418	829	190		1,138	818	1,854	1,109
08/17	1,137	947	2,653	950	202		1,265	972	2,213	1,152
08/18	<u>1,315</u>	<u>1,098</u>	<u>2,834</u>	<u>1,056</u>	<u>239</u>		<u>1,623</u>	<u>1,044</u>	<u>3,686</u>	
08/19	1,470	1,142	3,466	1,086	278		1,900	1,134	4,139	
08/20	1,543	1,216	4,510	1,232	338		2,033	1,297	4,297	
08/21	1,833	1,267	5,058	1,369	385		2,119	2,057	4,676	
08/22	2,124	1,364	5,413	1,415	426		2,577	3,532	5,094	

	2006	2007	2008	2009	2010	2011	2012	2013	2014	2015
Season Total	6,111	2,807	7,457	8,137	1,525		4,407	6,490	13,797	

Tuluksak River Coho



There are no comments for the past three days.

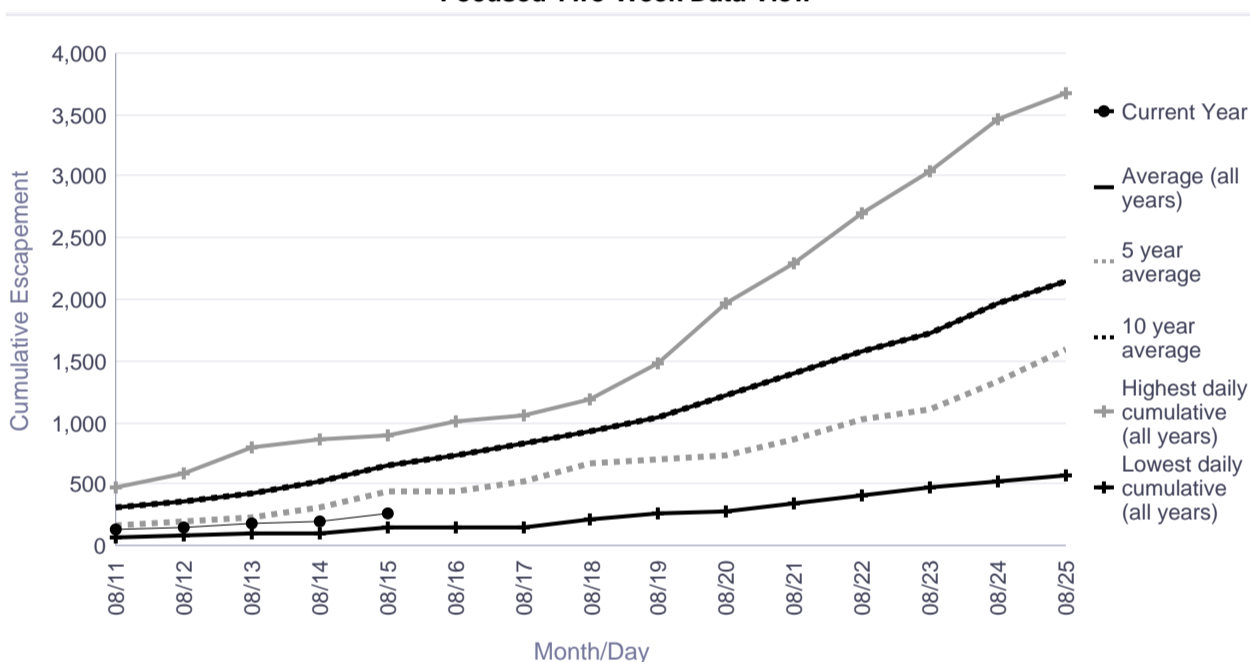
Informational Packet

Salmon River (Aniak) Salmon Monitoring Project Cumulative Daily Passage of Coho Salmon

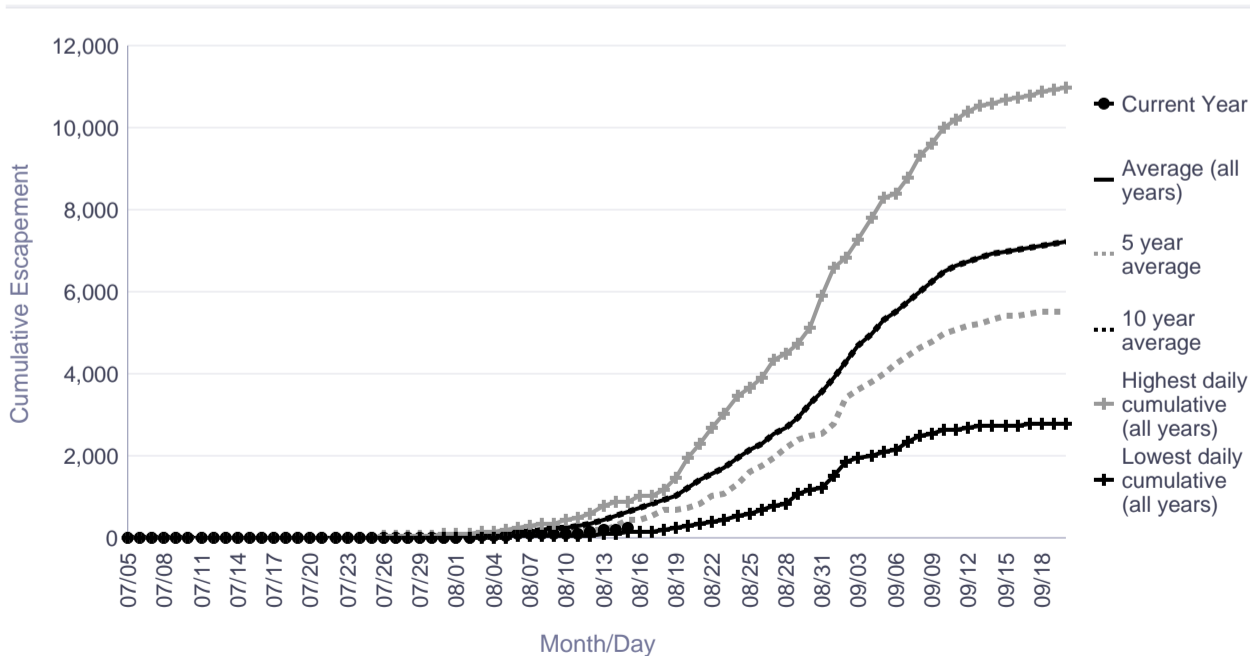
Date	Lowest daily cumulative (all years)	Average (all years)	5 year average	10 year average	Highest daily cumulative (all years)	Current Year
08/11	62	311	165	311	478	126
08/12	80	355	200	355	581	155
08/13	93	426	224	426	805	183
08/14	108	528	308	528	870	204
08/15	143	655	437	655	891	267
08/16	143	738	437	738	1,012	
08/17	143	828	520	828	1,051	
08/18	217	935	666	935	1,184	
08/19	259	1,050	708	1,050	1,483	
08/20	280	1,214	734	1,214	1,973	
08/21	341	1,403	858	1,403	2,287	
08/22	405	1,580	1,031	1,580	2,691	
08/23	467	1,732	1,103	1,732	3,048	
08/24	526	1,961	1,332	1,961	3,468	
08/25	577	2,151	1,595	2,151	3,675	

	Lowest Count	Average Count	5 Year Average	10 Year Average	Highest Count
Season Total	327	5,094	5,526	5,094	10,974

Focused Two-Week Data View



Season Total Overview



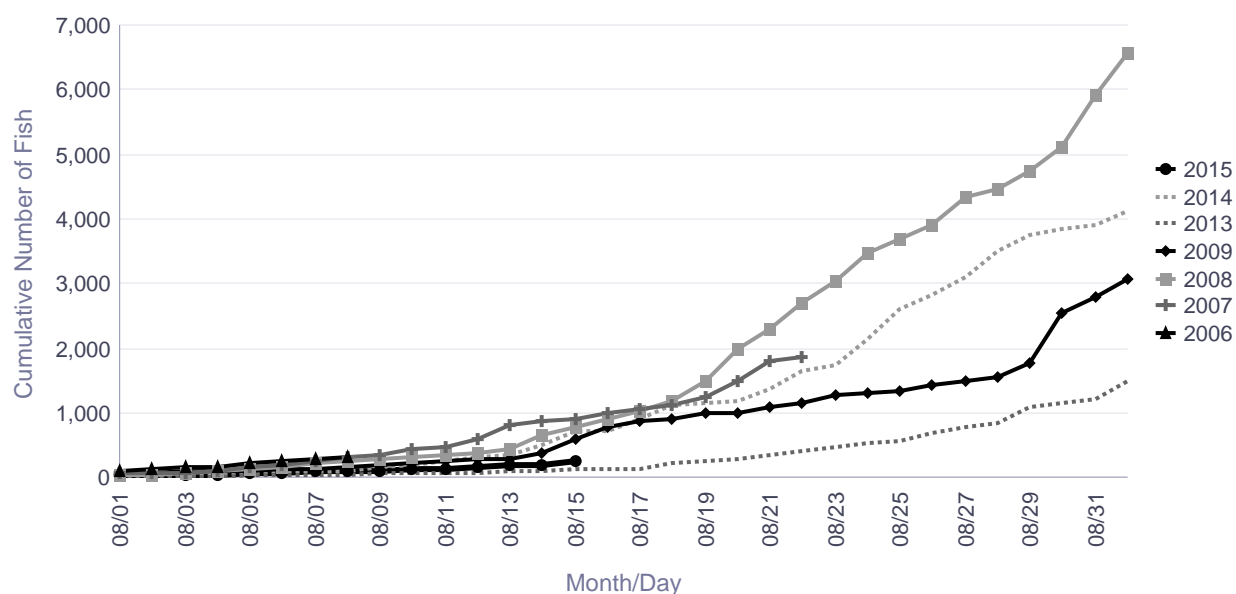
Informational Packet

Salmon River (Aniak) Weir Historical Cumulative Daily Passage of Coho Salmon

Cumulative Daily Passage										
Date	2006	2007	2008	2009	2010	2011	2012	2013	2014	2015
08/15		891	785	597				143	730	267
08/16		1,012	894	779				143	730	
08/17		1,051	1,037	883				143	897	
08/18		1,117	1,184	914				217	1,115	
08/19		1,234	1,483	988				259	1,156	
08/20		1,494	1,973	1,005				280	1,187	
08/21		1,796	2,287	1,087				341	1,375	
08/22		1,860	2,691	1,157				405	1,656	

	2006	2007	2008	2009	2010	2011	2012	2013	2014	2015
Season Total	327	1,860	10,974	6,351				2,797	8,254	

Salmon River (Aniak) Coho



Date	Comments
8/15/2015	Last day of counts for the season.

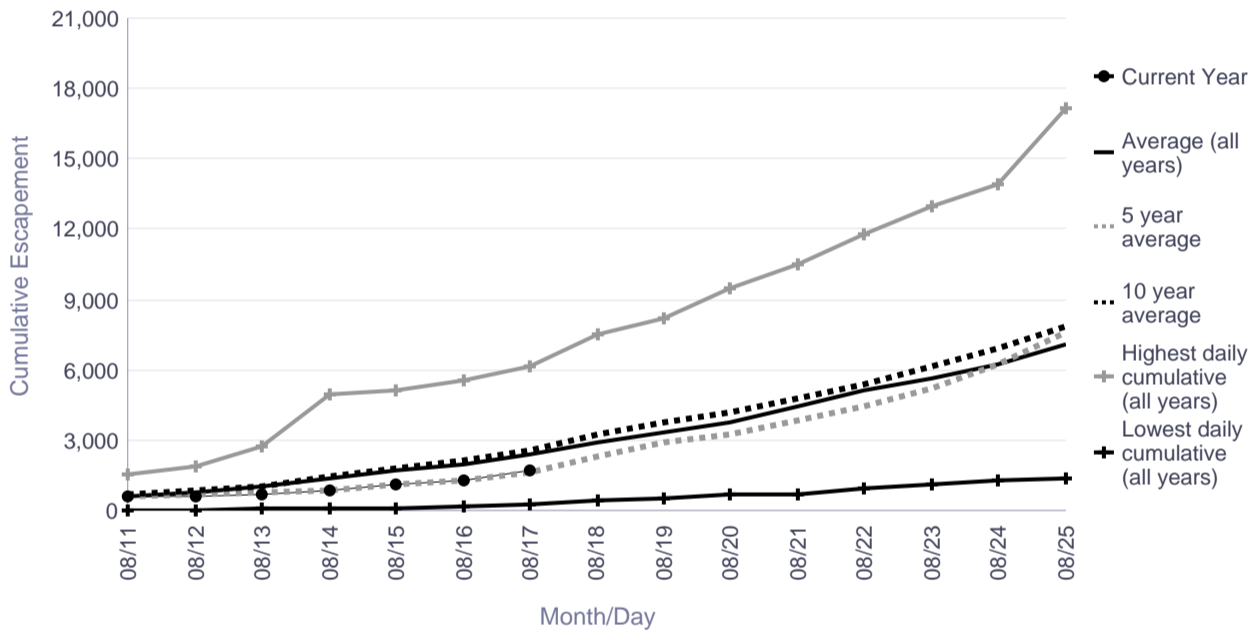
Informational Packet

George River Salmon Monitoring Project Cumulative Daily Passage of Coho Salmon

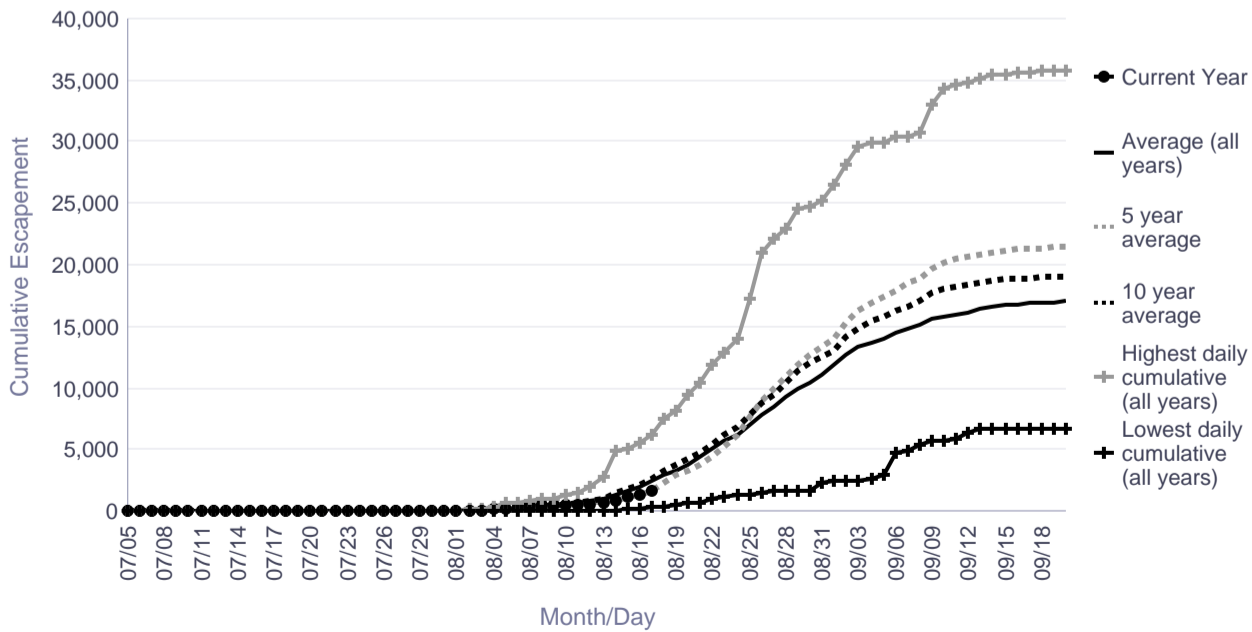
Date	Lowest daily cumulative (all years)	Average (all years)	5 year average	10 year average	Highest daily cumulative (all years)	Current Year
08/11	49	636	577	696	1,542	589
08/12	53	798	707	857	1,923	594
08/13	76	1,013	782	1,063	2,726	694
08/14	108	1,373	869	1,422	4,945	878
08/15	141	1,694	1,103	1,802	5,141	1,131
08/16	211	2,018	1,272	2,105	5,562	1,334
08/17	305	2,414	1,661	2,562	6,155	1,708
08/18	421	2,936	2,282	3,243	7,518	
08/19	489	3,334	2,871	3,745	8,215	
08/20	675	3,800	3,258	4,189	9,456	
08/21	698	4,480	3,817	4,778	10,491	
08/22	953	5,113	4,482	5,423	11,822	
08/23	1,139	5,681	5,196	6,148	12,940	
08/24	1,278	6,238	6,225	6,881	13,930	
08/25	1,374	7,075	7,643	7,889	17,168	

	Lowest Count	Average Count	5 Year Average	10 Year Average	Highest Count
Season Total	6,759	17,033	21,463	19,113	35,771

Focused Two-Week Data View



Season Total Overview



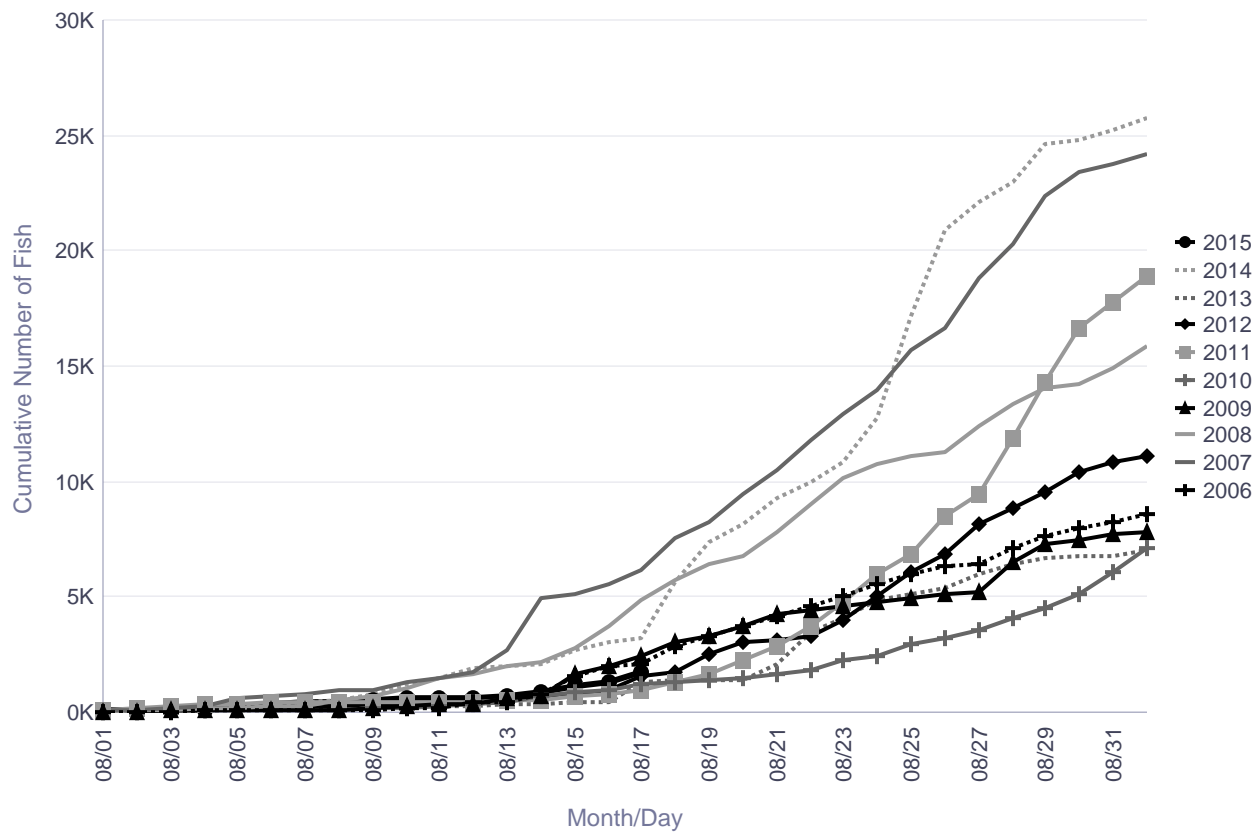
Informational Packet

George River Weir Historical Cumulative Daily Passage of Coho Salmon

	Cumulative Daily Passage									
Date	2006	2007	2008	2009	2010	2011	2012	2013	2014	2015
08/15	1,591	5,141	2,790	1,691	898	665	818	418	2,714	1,131
08/16	1,991	5,562	3,756	2,016	1,004	804	991	488	3,074	1,334
08/17	2,120	6,155	4,853	2,445	1,239	1,009	1,544	1,322	3,193	1,708
08/18	<u>2,901</u>	<u>7,518</u>	<u>5,751</u>	<u>3,047</u>	<u>1,318</u>	<u>1,301</u>	<u>1,754</u>	<u>1,385</u>	<u>5,652</u>	
08/19	3,297	8,215	6,385	3,343	1,379	1,701	2,552	1,389	7,336	
08/20	3,713	9,456	6,792	3,755	1,469	2,233	3,054	1,396	8,140	
08/21	4,147	10,491	7,821	4,279	1,623	2,914	3,125	2,123	9,302	
08/22	4,595	11,822	9,022	4,402	1,864	3,759	3,306	3,515	9,965	

	2006	2007	2008	2009	2010	2011	2012	2013	2014	2015
Season Total	12,705	28,398	21,931	12,490	12,639	29,120	14,478	15,308	35,771	

George River Coho



There are no comments for the past three days.

Informational Packet

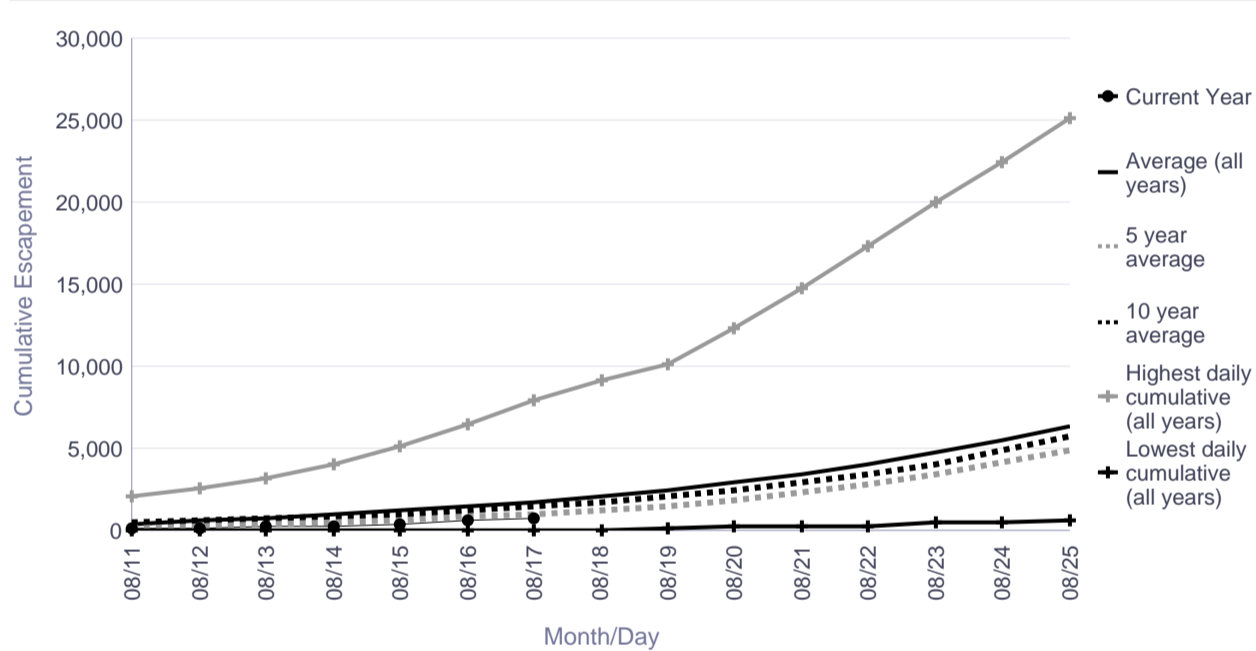
Kogrukluk River Salmon Monitoring Project Cumulative Daily Passage of Coho Salmon

Escapement Goal Range: 13,000-28,000

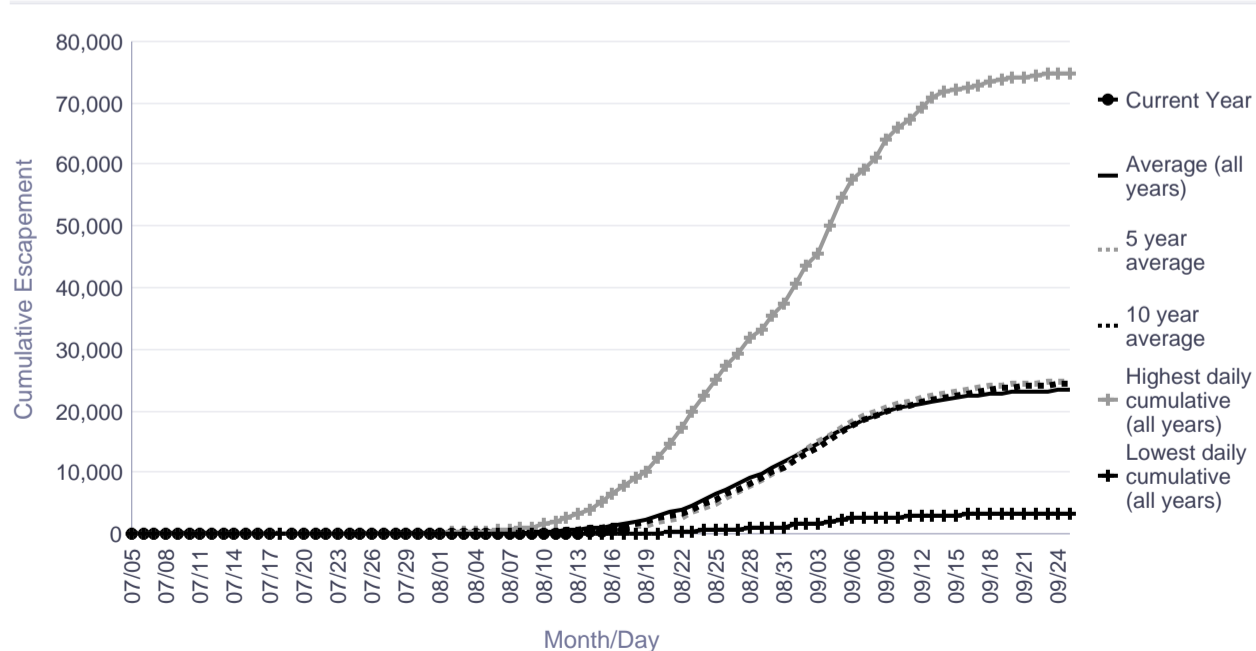
Date	Lowest daily cumulative (all years)	Average (all years)	5 year average	10 year average	Highest daily cumulative (all years)	Current Year
08/11	0	433	273	478	2,086	171
08/12	1	582	298	576	2,574	183
08/13	16	732	388	699	3,211	205
08/14	28	938	522	868	4,018	230
08/15	43	1,190	638	1,051	5,141	374
08/16	48	1,454	820	1,266	6,525	589
08/17	59	1,723	1,009	1,466	7,998	754
08/18	81	2,080	1,213	1,781	9,105	
08/19	125	2,462	1,511	2,139	10,140	
08/20	206	2,909	1,859	2,509	12,282	
08/21	238	3,473	2,293	2,945	14,792	
08/22	305	4,043	2,804	3,381	17,339	
08/23	457	4,734	3,466	4,096	20,004	
08/24	557	5,522	4,215	4,914	22,422	
08/25	592	6,397	4,950	5,740	25,149	

	Lowest Count	Average Count	5 Year Average	10 Year Average	Highest Count
Season Total	3,446	23,350	24,818	24,372	74,915

Focused Two-Week Data View



Season Total Overview



Informational Packet

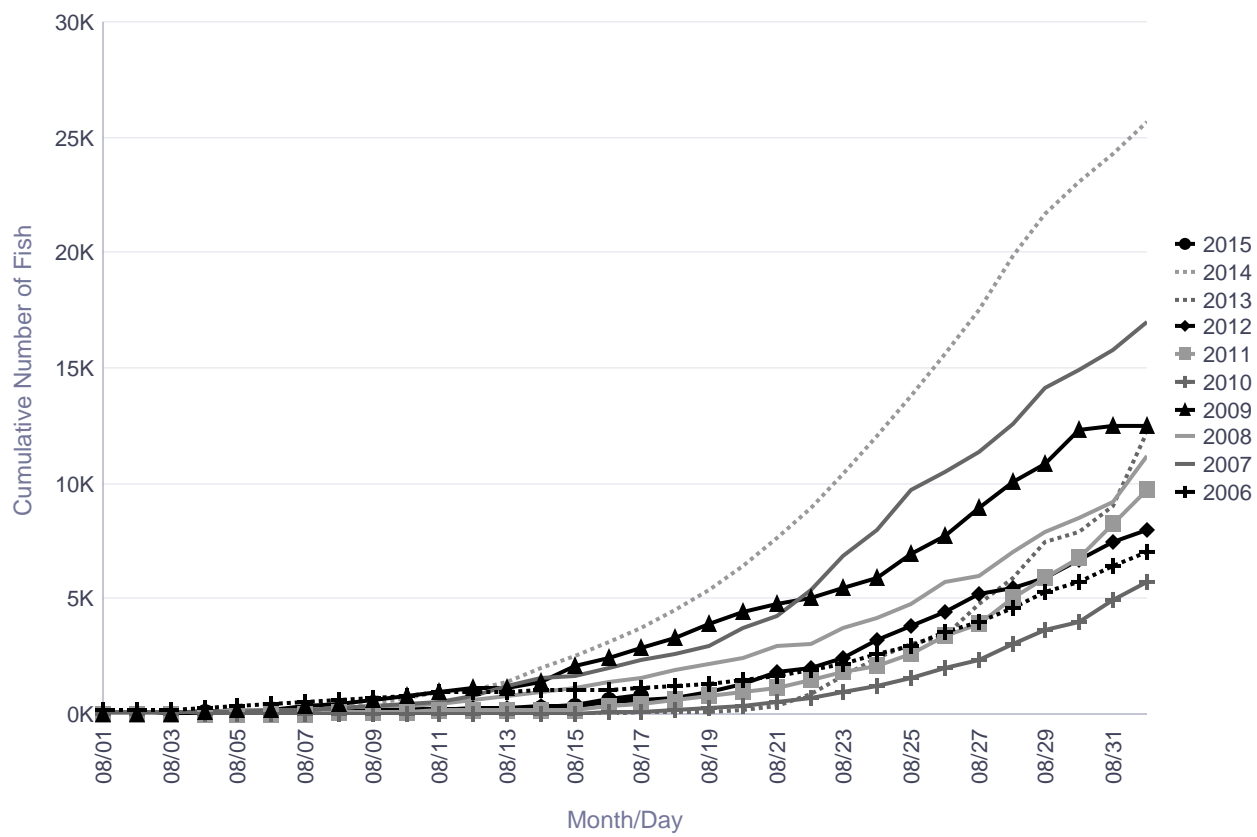
Kogrukluk River Weir Historical Cumulative Daily Passage of Coho Salmon

	Cumulative Daily Passage									
Date	2006	2007	2008	2009	2010	2011	2012	2013	2014	2015
08/15	1,044	1,701	1,119	2,118	47	194	388	43	2,518	374
08/16	1,087	2,034	1,392	2,459	76	359	498	48	3,121	589
08/17	1,148	2,363	1,557	2,852	119	478	630	59	3,757	754
08/18	1,233	2,633	1,925	3,298	180	595	687	81	4,520	
08/19	1,347	2,994	2,212	3,908	264	767	979	125	5,418	
08/20	1,497	3,709	2,458	4,422	378	929	1,324	206	6,457	
08/21	1,689	4,262	2,919	4,760	526	1,152	1,801	345	7,641	
08/22	1,929	5,414	3,056	5,016	715	1,448	2,030	855	8,970	

Escapement Goal Range: 13,000 to 28,000
Highlighted years below are when escapement goal was achieved or exceeded.

	2006	2007	2008	2009	2010	2011	2012	2013	2014	2015
Season Total	16,268	26,423	29,237	22,289	14,689	21,800	13,421	21,207	52,975	

Kogrukluk River Coho



There are no comments for the past three days.

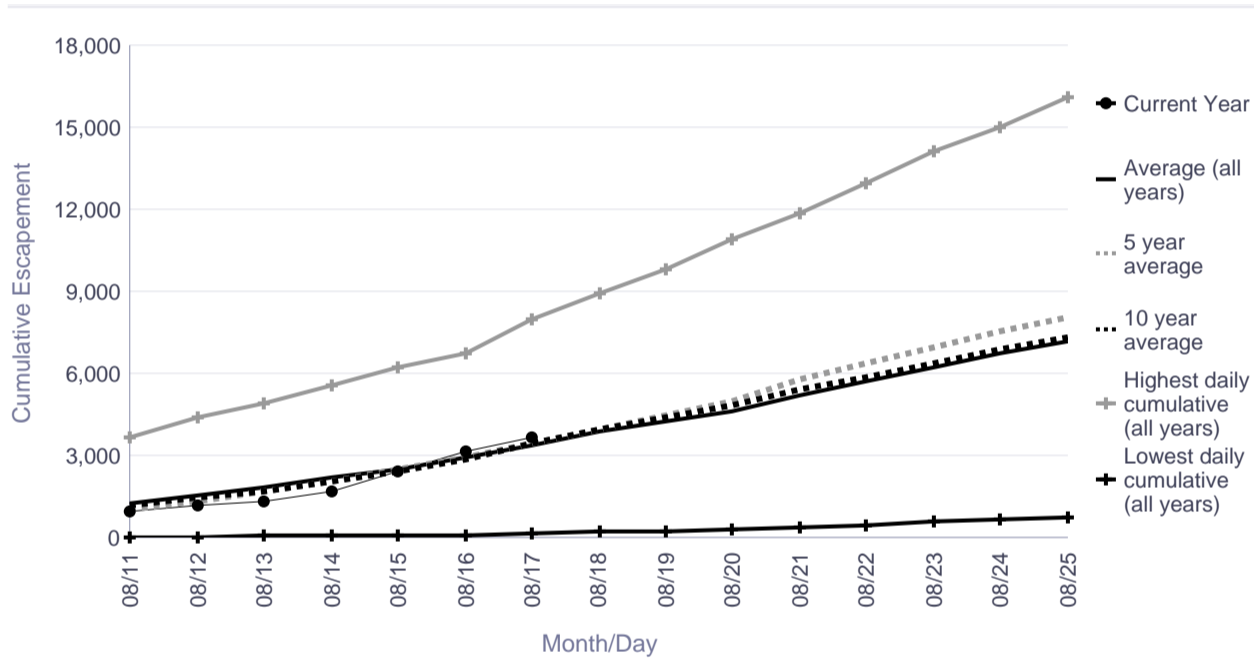
Informational Packet

Tatlawiksuk River Salmon Monitoring Project Cumulative Daily Passage of Coho Salmon

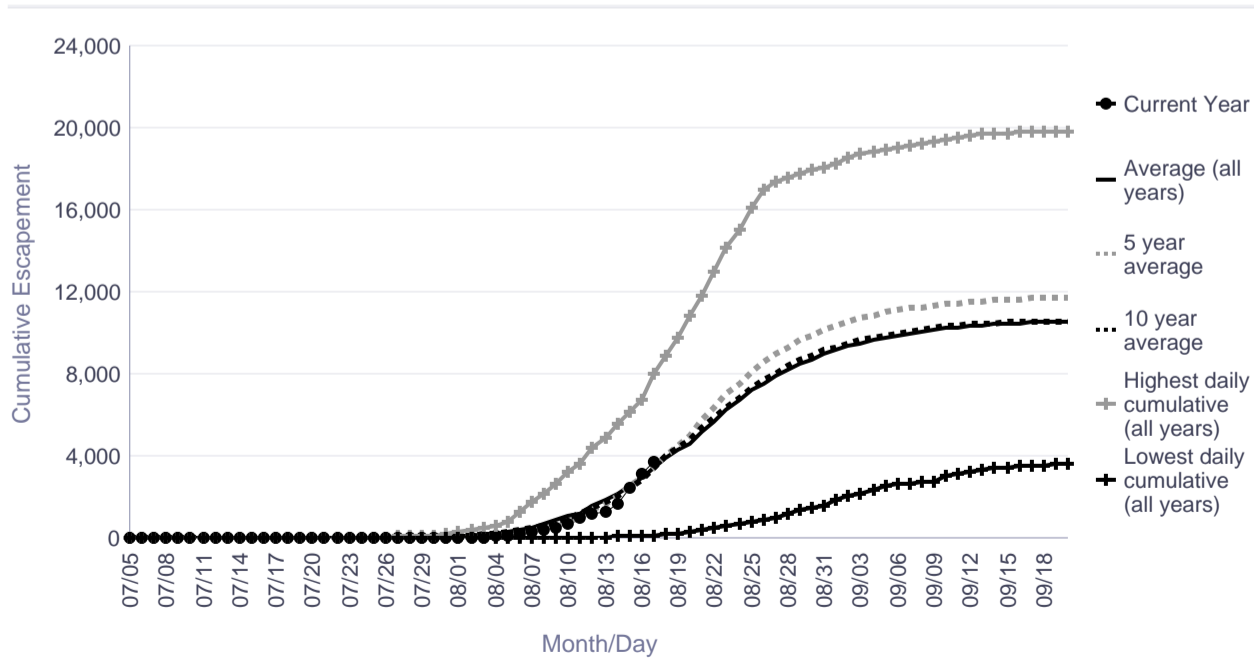
Date	Lowest daily cumulative (all years)	Average (all years)	5 year average	10 year average	Highest daily cumulative (all years)	Current Year
08/11	34	1,232	1,017	1,186	3,659	993
08/12	42	1,538	1,344	1,465	4,381	1,162
08/13	54	1,845	1,672	1,725	4,915	1,329
08/14	70	2,180	2,046	2,072	5,561	1,720
08/15	91	2,532	2,529	2,445	6,189	2,460
08/16	118	2,907	2,951	2,846	6,704	3,125
08/17	153	3,404	3,451	3,435	7,972	3,701
08/18	196	3,888	3,977	3,971	8,930	
08/19	249	4,279	4,495	4,405	9,787	
08/20	313	4,642	5,004	4,834	10,875	
08/21	388	5,220	5,752	5,384	11,828	
08/22	475	5,682	6,393	5,853	12,965	
08/23	574	6,252	6,989	6,377	14,126	
08/24	677	6,767	7,505	6,886	15,028	
08/25	765	7,208	8,069	7,333	16,125	

	Lowest Count	Average Count	5 Year Average	10 Year Average	Highest Count
Season Total	3,621	10,543	11,710	10,588	19,814

Focused Two-Week Data View



Season Total Overview



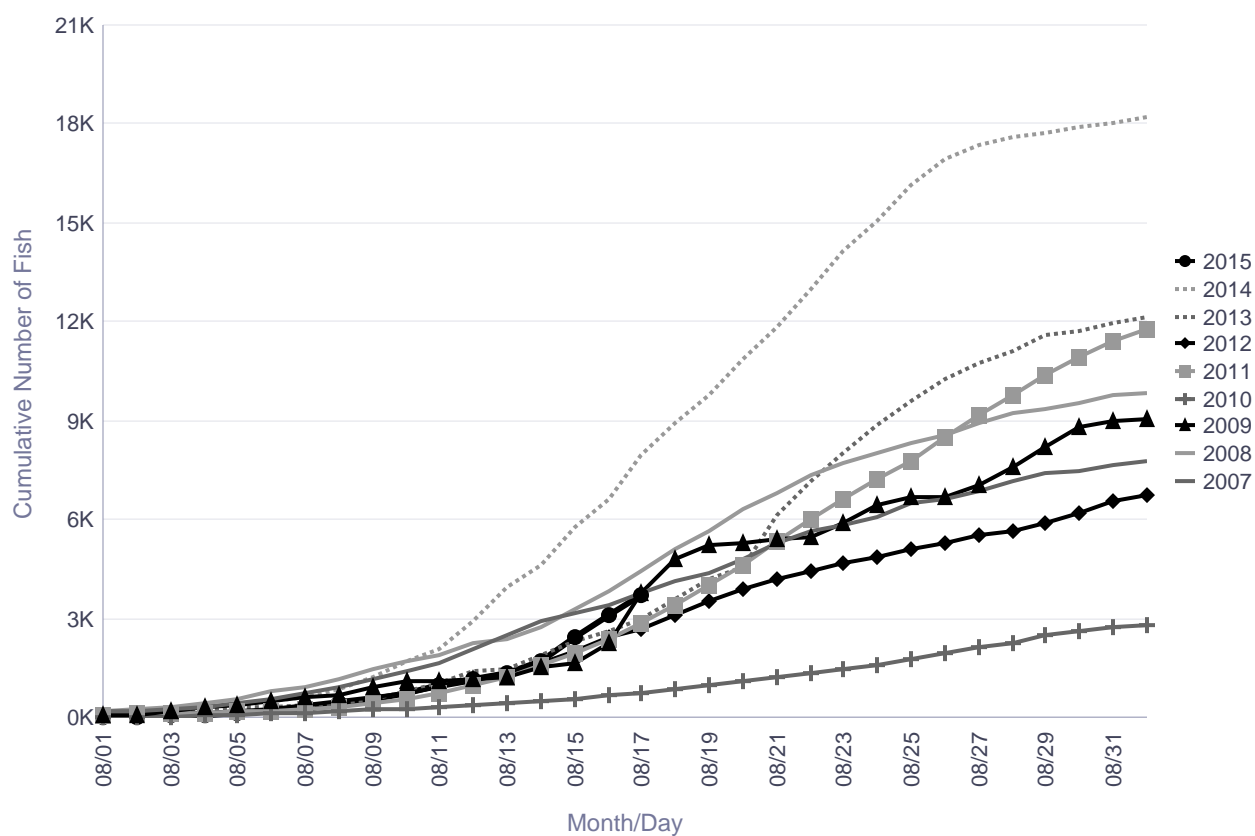
Informational Packet

Tatlawiksuk River Weir Historical Cumulative Daily Passage of Coho Salmon

	Cumulative Daily Passage									
Date	2006	2007	2008	2009	2010	2011	2012	2013	2014	2015
08/15		3,144	3,267	1,637	565	1,958	2,020	2,335	5,766	2,460
08/16		3,419	3,814	2,246	657	2,395	2,446	2,610	6,649	3,125
08/17		3,772	4,448	3,785	727	2,885	2,678	2,993	7,972	3,701
08/18		<u>4,115</u>	<u>5,128</u>	<u>4,788</u>	<u>840</u>	<u>3,425</u>	<u>3,110</u>	<u>3,582</u>	<u>8,930</u>	
08/19		4,370	5,621	5,231	962	4,008	3,523	4,194	9,787	
08/20		4,794	6,318	5,308	1,093	4,612	3,899	4,541	10,875	
08/21		5,294	6,820	5,410	1,231	5,342	4,223	6,137	11,828	
08/22		5,637	7,335	5,486	1,374	6,018	4,429	7,178	12,965	

	2006	2007	2008	2009	2010	2011	2012	2013	2014	2015
Season Total		8,500	11,022	10,148	3,773	14,184	8,015	12,764	19,814	

Tatlawiksuk River Coho



There are no comments for the past three days.

Informational Packet

2015 Location of Coho Salmon by Date Past Bethel Continuing Up the Kuskokwim River

Community	RIVER MILES	DAYS BETWEEN SITES	Index 1	Index 2	Index 3	Index 4	Index 5	Index 6
	Bethel Test Index		31.00	66.00	69.00	100.00	103.00	217.00
	Cumulative CPUE		94	244	601	972	1,245	2,055
Travel in miles per day		14	14	14	14	14	14	14
Apokak Slough S1 L	0	0	19-Jul	23-Jul	29-Jul	3-Aug	5-Aug	12-Aug
Tuntutuliak	28	2.0	21-Jul	25-Jul	31-Jul	5-Aug	7-Aug	14-Aug
Johnson R S2 L	48	3.4	22-Jul	26-Jul	1-Aug	6-Aug	8-Aug	15-Aug
Napaskiak	60	4.3	23-Jul	27-Jul	2-Aug	7-Aug	9-Aug	16-Aug
Bethel	66	4.7	23-Jul	27-Jul	2-Aug	7-Aug	9-Aug	16-Aug
Kwethluk	82	5.9	24-Jul	28-Jul	3-Aug	8-Aug	10-Aug	17-Aug
Akiak	100	7.1	26-Jul	30-Jul	5-Aug	10-Aug	12-Aug	19-Aug
Tuluksak S3 L	120	8.6	27-Jul	31-Jul	6-Aug	11-Aug	13-Aug	20-Aug
Kalskag	163	11.6	30-Jul	3-Aug	9-Aug	14-Aug	16-Aug	23-Aug
Birch Tree	183	13.1	1-Aug	5-Aug	11-Aug	16-Aug	18-Aug	25-Aug
Aniak	191	13.6	1-Aug	5-Aug	11-Aug	16-Aug	18-Aug	25-Aug
Chuathbaluk S4 L	201	14.4	2-Aug	6-Aug	12-Aug	17-Aug	19-Aug	26-Aug
Napaimiut	223	15.9	3-Aug	7-Aug	13-Aug	18-Aug	20-Aug	27-Aug
Crooked Creek	259	18.5	6-Aug	10-Aug	16-Aug	21-Aug	23-Aug	30-Aug
Holitna River S5 L	305	21.8	9-Aug	13-Aug	19-Aug	24-Aug	26-Aug	2-Sep
Tatlawiksuk River	350	25.0	13-Aug	17-Aug	23-Aug	28-Aug	30-Aug	6-Sep
McGrath	468	33.4	21-Aug	25-Aug	31-Aug	5-Sep	7-Sep	14-Sep
Nikolai	585	41.8	29-Aug	2-Sep	8-Sep	13-Sep	15-Sep	22-Sep

Cumulative CPUE	94	244	601	972	1,245	2,055
5-year Avg CPUE	96	245	737	1,258	1,735	2,592
10-year Avg CPUE	177	369	1,019	1,685	2,172	3,030

Bethel Test Fishery - Coho

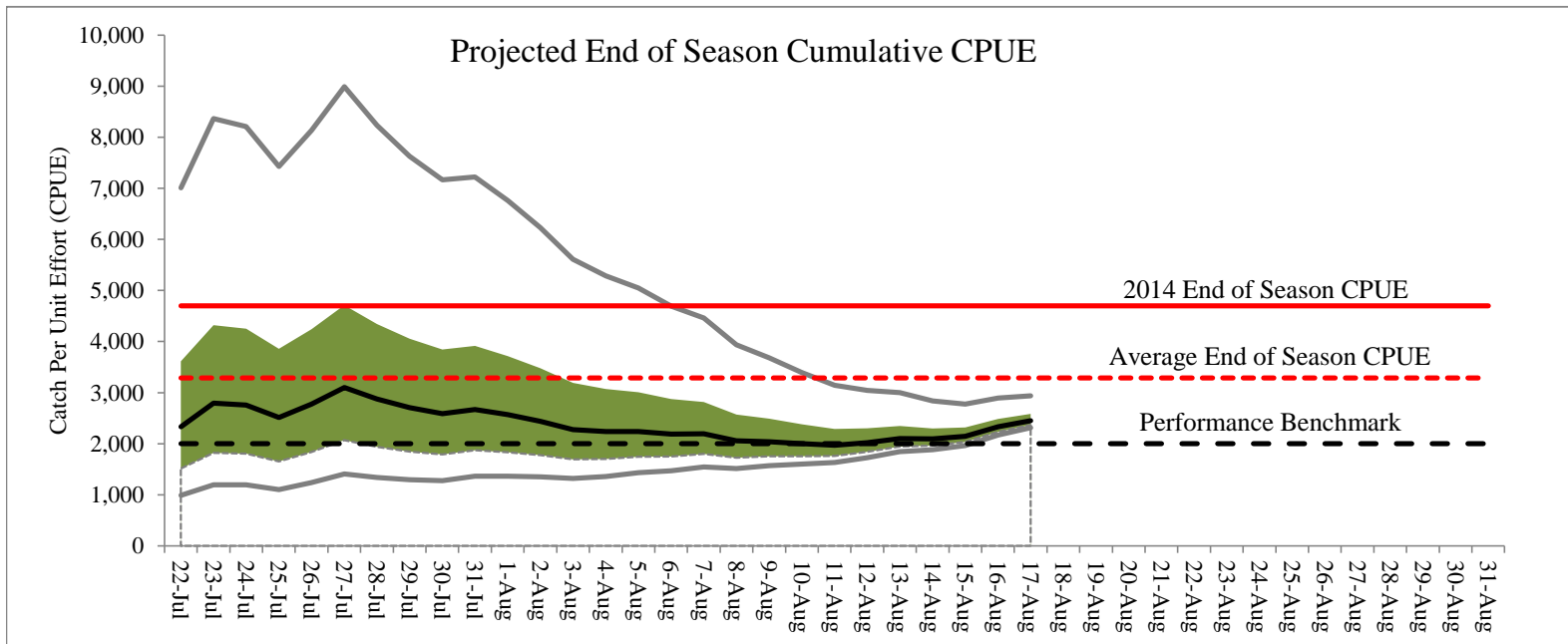
8/17/2015

Best Estimate of Run Timing:	Average
Average percent of run past Bethel on this date:	86%
5-Day Forecast (Anticipated Percent of Run):	5% - 11%
Daily CPUE:	159
Daily Cumulative CPUE:	2,214
Percentile Rank (1984-2014):	32%

End of Season Projections as of:	8/17/2015
Run Timing Scenerio	Cum. CPUE
Earliest 10%	2,311
First Quartile	2,365
Median	2,450
Third Quartile	2,584
Latest 10%	2,938

Percent of all Salmon Passing Bethel as of:	8/17/2015
2015	98%
Historical Average	98%

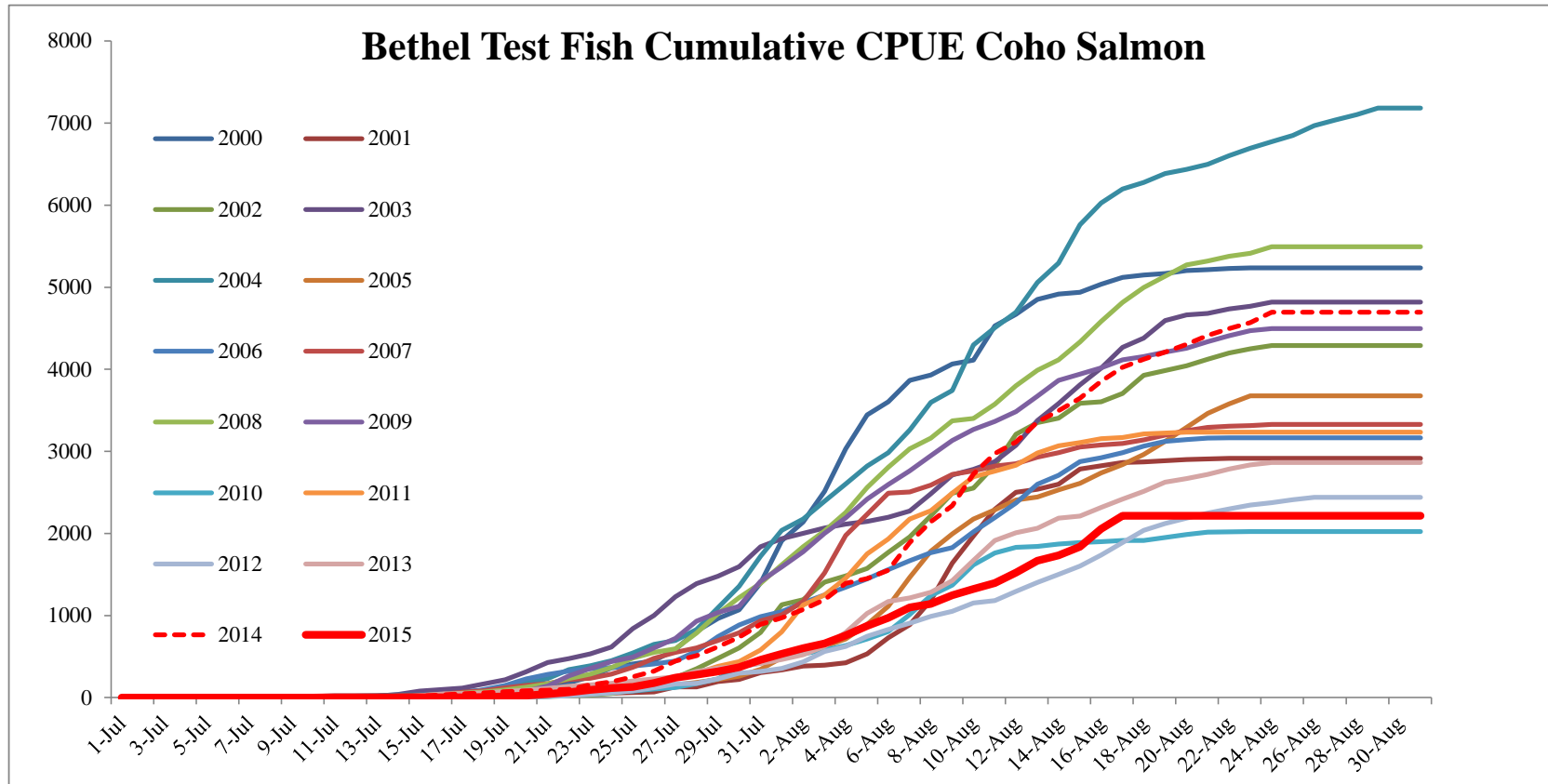
Note: Percentages based on 3-day average.



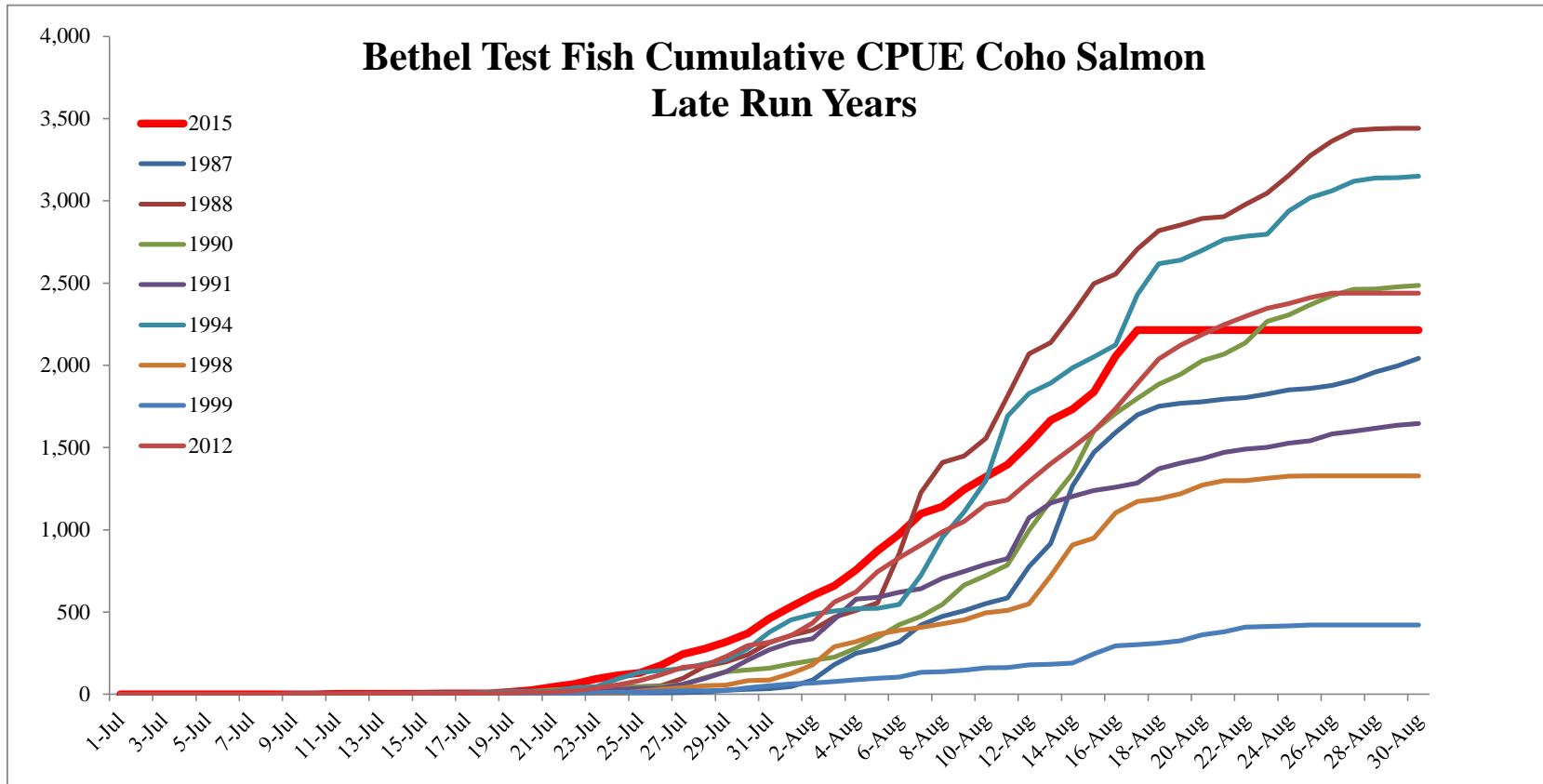
The "Performance Benchmark" refers to an end of season CPUE of 2,000. Historically, when BTF exceeded 2,000 escapement goals at Kogruluk and Kwethluk were achieved, subsistence harvest was within ANS, and modest commercial fishing opportunity was provided.

Informational Packet

Preliminary Data



Note: Average midpoint is August 6 for year shown. Median projection based on midpoint of August 7. Third quartile projection based on midpoint of August 9. Latest 10% projection based on midpoint of August 12.



Note: Average midpoint is August 11 for year shown. Median projection based on midpoint of August 7. Third quartile projection based on midpoint of August 9. Latest 10% projection based on midpoint of August 12. Late run years shown here are years with a midpoint date at least 2 days later than average.

Informational Packet

Coho salmon commercial harvest by day, 2004–2015

	2004	2005	2006	2007	2008	2009	2010	2011	2012	2013	2014	2015	5-yr Average	10-yr Average
22-Jul					94			1,525					1,525	810
23-Jul										2,960			2,960	2,960
24-Jul									1,562				1,562	1,562
25-Jul					90									90
26-Jul							3,603			5,785			4,694	4,694
27-Jul								5,688	2,912				4,300	4,300
28-Jul						14,516								14,516
29-Jul														
30-Jul	9,462						6,049			8,968			7,509	5,045
31-Jul									3,485				3,485	3,485
1-Aug			10,309	19,133		16,846								15,429
2-Aug		8,666				150								4,408
3-Aug	23,957							12,563	6,958				9,761	9,761
4-Aug			10,650			19,337								14,994
5-Aug		21,463												21,463
6-Aug	28,638			15,926	12,013	380	17,246			23,461			20,354	13,805
7-Aug									5,148				5,148	5,148
8-Aug			14,162		13,552	16,224								14,646
9-Aug		20,026												20,026
10-Aug	20,022			13,059				8,660	5,209	30,972		23,335	14,947	14,475
11-Aug			23,209			15,569					23,999		23,999	20,926
12-Aug							7,274						7,274	7,274
13-Aug	20,353				19,667	3,709				8,077			8,077	10,484
14-Aug				15,411							32,570		32,570	23,991
15-Aug		7,768	18,253		20,140									15,387
16-Aug									7,996				7,996	7,996
17-Aug	8,491			6,231				4,557		12,778		27,535	8,668	7,855
18-Aug			7,833			10,189					26,395		26,395	14,806
19-Aug														
20-Aug	9,287				7,017					11,630			11,630	9,324
21-Aug									2,838		18,809		10,824	10,824
22-Aug			6,004	3,993	6,280	6,419								5,674
23-Aug	19,068									5,447			5,447	5,447
24-Aug	18,642			3,085										3,085
25-Aug		6,549	5,427		5,242									5,739
26-Aug											10,400		10,400	10,400
27-Aug	13,535													
28-Aug			2,593											2,593
29-Aug														
30-Aug	11,563		1,334											1,334
31-Aug														
Total	183,018	64,472	99,774	76,838	84,364	103,189	34,172	32,993	36,108	110,078	112,173	50,870	65,105	75,416
22-Jul to 1-Aug	9,462	0	10,309	19,133	303	31,362	9,652	7,213	7,959	17,713	0	0	8,507	10,364
2-Aug to 8-Aug	52,595	30,129	24,812	15,926	25,715	35,941	17,246	12,563	12,106	23,461	0	0	13,075	19,790
9-Aug to 14-Aug	40,375	20,026	23,209	28,470	19,667	19,278	7,274	8,660	5,209	39,049	56,569	23,335	23,352	22,741
15-Aug to 31-Aug	80,586	14,317	41,444	13,309	38,679	16,608	0	4,557	10,834	29,855	55,604	27,535	20,170	22,521

Informational Packet

2015 Inseason Salmon Assessment Update for the Kuskokwim Area #11

The Alaska Department of Fish and Game (ADF&G) works cooperatively with U.S. Fish and Wildlife Service (USFWS), National Park Service, and various Tribal or community groups to monitor the health of Kuskokwim Area salmon stocks and provide data for inseason management.

ADF&G ensures that all assessment data are publicly available inseason. Detailed project summaries are prepared each week and presented to the Kuskokwim River Salmon Management Working Group. Management meetings are held each Wednesday at the ADF&G office in Bethel. Working Group meetings are open to the public, in person or via teleconference. Project summaries and associated meeting materials are available online by 5:00 PM Tuesday during the salmon season. In addition, select data are available daily by 10:00 AM.

Working Group Information

Packets: <http://www.adfg.alaska.gov/index.cfm?adfg=commercialbyareakuskokwim.kswg>

Inseason Bethel Test Fish and Escapement Monitoring Data:

<http://www.adfg.alaska.gov/index.cfm?adfg=commercialbyareakuskokwim.salmon#fishcounts>

Assessment Overview

Coho salmon are the most abundant species in the lower portion of the Kuskokwim River, and ADF&G has shifted toward coho salmon management. The historical average midpoint of the coho salmon run past Bethel is August 8. Daily CPUE in the Bethel Test Fishery (BTF) has increased over the past week, indicating an increase in coho salmon abundance. Cumulative CPUE is below average for this time of year, indicating the coho salmon run is either late, weak, or both. Coho salmon are continuing to arrive in consistent numbers at tributary escapement monitoring projects; however, it is still early in the coho salmon escapement. Escapement is average to below average at monitored locations. There was commercial harvest opportunity for coho salmon on August 10 and August 17, downriver from Bethel. Total harvest and CPUE from the commercial opportunities were above average for this time of year. Inseason projections of run strength suggest that coho salmon abundance is adequate to meet escapement needs, provide for subsistence harvest compared to recent years, and allow for limited commercial harvest.

Bethel Test Fishery

Bethel Test Fishery (BTF) is the primary inseason run assessment tool for Kuskokwim River salmon and is operated the same way each year. The daily Catch Per Unit Effort (CPUE) is used to index run timing and relative abundance of Chinook, chum, sockeye, and coho salmon. These data have only limited utility for estimating total run size or escapement. *The 2015 Chinook salmon, chum salmon, and sockeye salmon data is not directly comparable to prior years due to subsistence fishing restrictions.* The Bethel Test Fishery continues to operate on schedule.

Coho salmon are the most abundant species in the lower river. As of August 17, cumulative CPUE of coho salmon is 2,214, which is below the recent 5-year average of 2,683 and recent 10-year average of 3,126. The historical midpoint of the coho salmon run is August 8. Coho salmon run timing appears to be late. Inseason projections based on both average and late run timing suggest the end of season cumulative

Informational Packet

CPUE could be below average; however, as of August 15th BTF exceeded the “performance benchmark” of 2,000 fish. In prior years when BTF cumulative CPUE for coho salmon exceeded 2,000, escapement goals at the Kogrukluk and Kwethluk rivers were achieved, amounts necessary for subsistence (27,400–57,600) were met, and modest commercial harvest opportunity was allowed.

The Chinook salmon, chum salmon, and sockeye salmon runs through the lower river are effectively over. As of August 17, Chinook salmon cumulative CPUE is 625, chum salmon is 2,913, and sockeye salmon is 2,174. Cumulative CPUE is above average for Chinook salmon and sockeye salmon, and below average for chum salmon.

Kwethluk River Weir

The Kwethluk River weir is operated by USFWS and used to index salmon escapement to the lower Kuskokwim River tributaries. As of August 17, a total of 8,113 Chinook salmon, 22,712 chum salmon, 8,873 sockeye salmon, and 1,604 coho salmon have been counted past the weir. The Chinook salmon escapement is considerably larger compared to recent years at this location. Chum salmon escapement is similar to the long-term average. Sockeye salmon escapement is the largest on record for this location. It is still early in the coho salmon escapement. On average, the midpoint of the coho salmon escapement is August 26. Cumulative coho salmon escapement to date is one of lowest on record for this location.

Escapement goals have been established by ADF&G for Chinook salmon (4,100–7,500) and coho salmon (>19,000). The upper bound of the Chinook salmon escapement goal has been exceeded. Inseason projections currently indicate that the coho salmon escapement goal may not be met.

Tuluksak River Weir

The Tuluksak River weir is operated by USFWS. As of August 17, a total of 660 Chinook salmon, 5,969 chum salmon, 731 sockeye salmon, and 1,152 coho salmon have been counted past the weir. Chinook salmon escapement is larger than the recent 5-year average but smaller than the long-term historical average for this date. Chum salmon escapement is the lowest on record for this date. It is still early in the coho salmon escapement. Cumulative coho salmon escapement to date is similar to the 5-year average but below the historical average. On average, the midpoint of the coho salmon escapement is August 26.

No salmon escapement goals have been established by ADF&G for this river.

Salmon River (Aniak River) Weir

The Salmon River (Aniak) weir has been operated by ADF&G and used to index salmon escapement to the Aniak River drainage. Operations at this weir ended on August 15.

As of August 15, a total of 2,285 Chinook salmon, 5,392 chum salmon, 1,461 sockeye salmon, and 267 coho salmon were counted past the weir. Chinook salmon and sockeye salmon escapements were similar to the long-term average for this location. Chum salmon escapement is greater than 2014, but is the second lowest on record of the seven years this project has successfully observed chum salmon. All species were still being observed passing the weir when operations ended for the season. No weir-based salmon escapement goals have been established by ADF&G for this river.

Informational Packet

George River Weir

The George River weir is operated by ADF&G and used to index salmon escapement to middle Kuskokwim River tributaries. As of August 17, a total of 2,275 Chinook salmon, 16,934 chum salmon, and 1,708 coho salmon have been counted past the weir. Chinook salmon and chum salmon escapements are similar to what was observed in 2014, but below the historical average. It is still early in the coho salmon escapement at this location. However, cumulative escapement to date is tracking slightly higher than the 5-year average but below the historical average across all years. On average, the midpoint of the coho salmon escapement is August 28.

A sustainable escapement goal of 1,800–3,300 Chinook salmon has been established by ADF&G for this river. The lower bound of the Chinook salmon escapement goal was achieved on July 15.

Tatlawiksuk River Weir

The Tatlawiksuk River weir is operated by ADF&G and used to index salmon escapement to middle Kuskokwim River tributaries. Operations were interrupted on July 19 due to high water and normal operations were resumed on July 20. As of August 17, a total of 2,092 Chinook salmon, 9,912 chum salmon, and 3,701 coho salmon have been counted past the weir. Chinook salmon escapement is above average, and chum salmon escapement is below average. The majority of these species have passed the weir. Cumulative coho salmon escapement to date is tracking above the historical average. On average, the midpoint of the coho salmon escapement is August 23.

No salmon escapement goals have been established by ADF&G for this river.

Kogrukluk River Weir

The Kogrukluk River weir is operated by ADF&G and used to index salmon escapement to the Holitna River drainage. Operations were interrupted on July 17 due to high water and normal operations were resumed on July 20. As of August 17, a total of 7,582 Chinook salmon, 30,498 chum salmon, 6,283 sockeye salmon, and 754 coho salmon were counted past the weir. It is still early in the coho salmon escapement at this location. On average, the midpoint of the coho salmon escapement is September 1. Cumulative coho salmon escapement to date is below average.

Sustainable escapement goals have been established by ADF&G for Chinook salmon (4,800–8,800), chum salmon (15,000–49,000), sockeye salmon (4,400–17,000), and coho salmon (13,000–28,000). The lower bound of the Chinook salmon, chum salmon, and sockeye salmon goals were achieved on July 23, July 29, and August 1 respectively. The likelihood of achieving the coho salmon goal is uncertain at this time.

Telaquana Lake Weir

The Telaquana Lake weir was operated cooperatively by ADF&G and National Park Service. The weir is used to index escapement for lake-spawning sockeye salmon. Operations ended on August 11.

As of August 11, a total of 91,090 sockeye salmon were observed past the weir. Escapement was the largest on record for this location and is nearly three times the historical average.

Informational Packet

Salmon River (Pitka Fork) Weir

The Salmon River (Pitka Fork) weir was successfully operated by ADF&G and MTNT (McGrath, Takotna, Nikolai, Telida) and used to index Chinook salmon escapement to the headwaters upriver from McGrath. Operations ended on August 15.

As of August 15, a total of 6,257 Chinook salmon and 52 chum salmon were counted passing the weir. This was the first year that this weir has operated since 1982. The location of the weir has changed since that time, and no comparable data exists.

Kuskokwim River Chinook Salmon Aerial Surveys

Aerial surveys of peak Chinook salmon spawning abundance have been completed for select tributaries in the upper, middle, and lower portions of the Kuskokwim River drainage. Aerial surveys are an index of escapement to a very broad geographic area – meaning not all fish are counted, but the number of fish observed is related to the number of fish that escaped.

A total of 10 tributaries were successfully surveyed. Of the tributaries surveyed, ADF&G has established aerial survey escapement goals on the Salmon River Pitka Fork (470–1,600), Holitna River mainstem (970–2,100), Gagarayah River (300–830), and Kisaralik River (400–1,200). The escapement goal was exceeded on the Salmon River Pitka Fork, achieved on the Kisaralik River, and not achieved on either the Holitna or Gagarayah rivers.

District W1 – Commercial Harvest

The first commercial harvest opportunity in District W1 was August 10. Total harvest was 3 Chinook salmon, 100 sockeye salmon, 366 chum salmon, and 23,335 coho salmon. Coho salmon harvest and CPUE was average. A second commercial harvest opportunity took place on August 17. Total harvest on August 17 was 27,535 coho, 100 chum, and 4 sockeye salmon.

District W4 – Kuskokwim Bay

The Kanektok River weir is used to monitor escapement to District W4. Operations ended on August 15.

As of August 15, total passage through the weir was 10,416 Chinook salmon, 106,751 sockeye salmon, 15,048 chum salmon, and 2,493 coho salmon. Chinook salmon escapement was above average while the escapement of sockeye salmon, chum salmon, and coho salmon were below average. No weir-based salmon escapement goals have been established by ADF&G for this river.

ADF&G has established aerial survey escapement goals for Chinook salmon (3,500–8,000) and sockeye salmon (14,000–34,000) in the Kanektok River. Air surveys have been completed. The Chinook salmon goal was achieved, and the sockeye salmon goal was exceeded.

There have been a total of 14 commercial openers in District W4. Total harvest to date is 7, 505 Chinook salmon, 15,793 chum salmon, 30,083 sockeye salmon, and 47,435 coho salmon. Harvest is below average for Chinook salmon, chum salmon, and sockeye salmon. Coho salmon harvest is average.

District W5 – Kuskokwim Bay

Informational Packet

The Middle Fork Goodnews River weir is used to monitor escapement to District 5. As of August 17, total passage through the weir is 1,386 Chinook salmon, 54,143 sockeye salmon, 10,698 chum salmon, and 110 coho salmon. Sockeye salmon escapement is above average. Chinook salmon, chum salmon, and coho salmon escapements are below average for this location.

ADF&G has established weir-based escapement goals for Chinook salmon (1,500–2,900), chum salmon (>12,000), sockeye salmon (18,000–40,000), and coho salmon (>12,000). Escapement has exceeded the upper bound of the sockeye salmon goal. Chinook salmon and chum salmon goals have not been achieved. Coho salmon escapement at the weir is the lowest on record.

ADF&G has established aerial survey escapement goals for Chinook salmon (640–3,300) and sockeye salmon (5,500–19,500) in the North Fork Goodnews River. Air surveys have been completed. The Chinook salmon goal was achieved, and the sockeye salmon goal was exceeded.

There have been a total of 13 commercial openers in District W5. Total harvest to date is 705 Chinook salmon, 4,510 chum salmon, 25,861 sockeye salmon, and 7,030 coho salmon. Harvest is below average for all species.

Chinook Salmon Tagging

ADF&G is conducting a Salmon Tag Lottery through September 2015. Tagged Chinook salmon are identifiable by a brightly colored plastic tag attached to their back, and a metal antennae coming out of their mouth. *It is okay if you harvest one of these tagged fish.* Please call 1-800-267-2104 and return the radio tag to the ADF&G office in Bethel. In appreciation, you will be entered into the monthly Lottery and eligible for a cash prize of \$200 and a seasonal cash prize of \$500.