

Kuskokwim River Salmon Management Working Group

1 (800) 315-6338 (MEET) Code: 58756# (KUSKO)

ADF&G Bethel toll free: 1 (855) 933-2433

Information Packet

August 3, 2012

MIDDLE AND UPPER KUSKOKWIM RIVER INSEASON REPORTS:

KNA Weekly Subsistence Fishing Reports

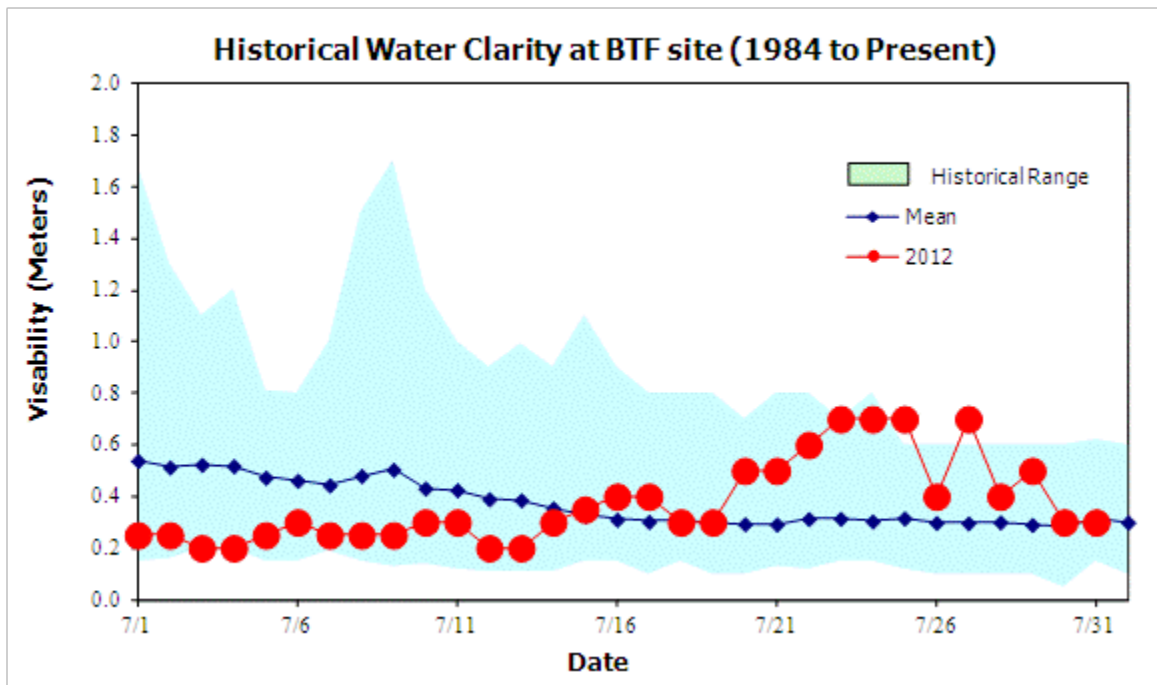
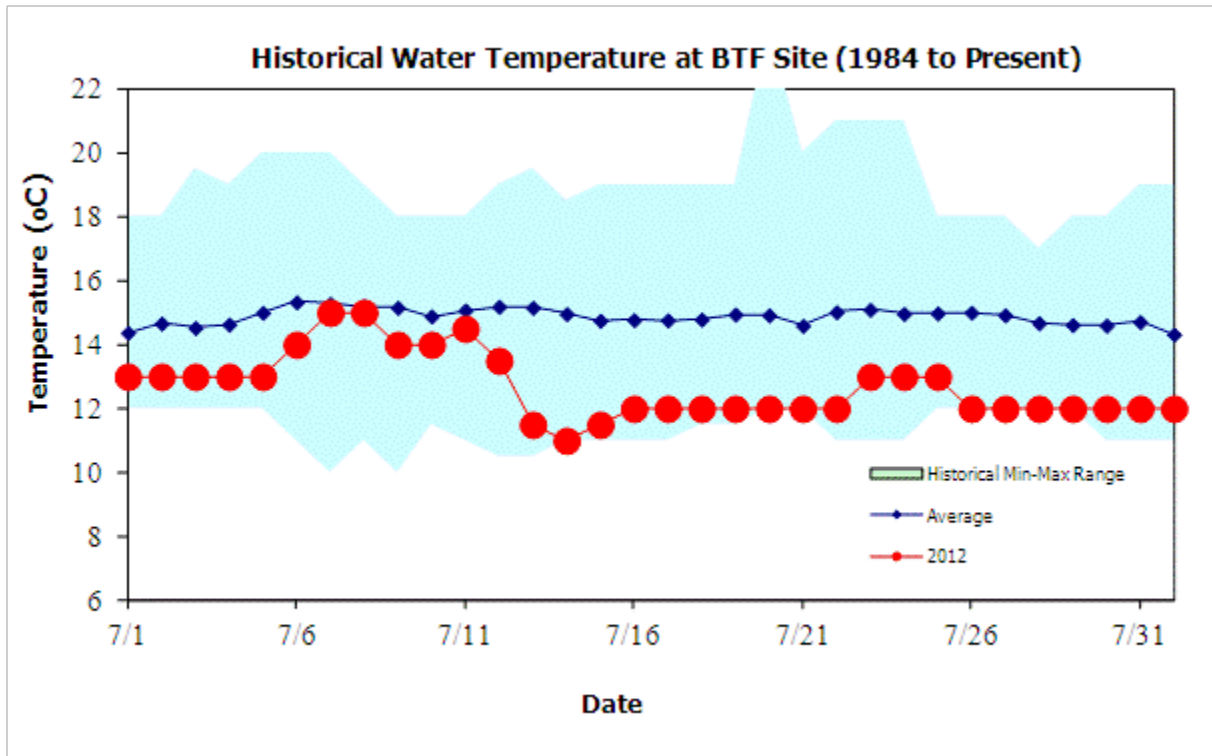
July 26 - August 2, 2012

VILLAGE	GEAR TYPE	SPECIES	Run Timing Compared to Most Years (Early, Average, Late)	Run Strength Compared to Most Years (Below Avg., Avg, Above Avg.)
Kalskag				
Comments: 4 Reds. Waiting on silvers. Bethel should come up with a new counting system what they are doing is incorrect. Believes that sonar, used in all of Alaska, is a waste of time waste of money doesn't see the use of it. The state of Alaska should not use it.		Chinook	Late	Below Avg
		Chum	Late	Avg
		Sockeye	Early	Avg
		Coho	N/A	N/A
Kalskag				
Comments: Not fishing yet. Will start again in 2-3 weeks for silvers		Chinook		
		Chum		
		Sockeye		
		Coho		
Aniak				
Comments: No fishing until silvers hit.		Chinook		
		Chum		
		Sockeye		
		Coho		
Aniak				
Comments: No fishing not until silvers come in.		Chinook		
		Chum		
		Sockeye		
		Coho		
Aniak	6" Drift			
Comments: 75 Chums, 8 Reds, 2 Kings. This is a difficult season to fish due to the low numbers and the restrictions. Had to change and adapt to using other species besides kings.		Chinook	Late	Below Avg
		Chum	Late	Avg
		Sockeye	Early	Above
		Coho	N/A	N/A

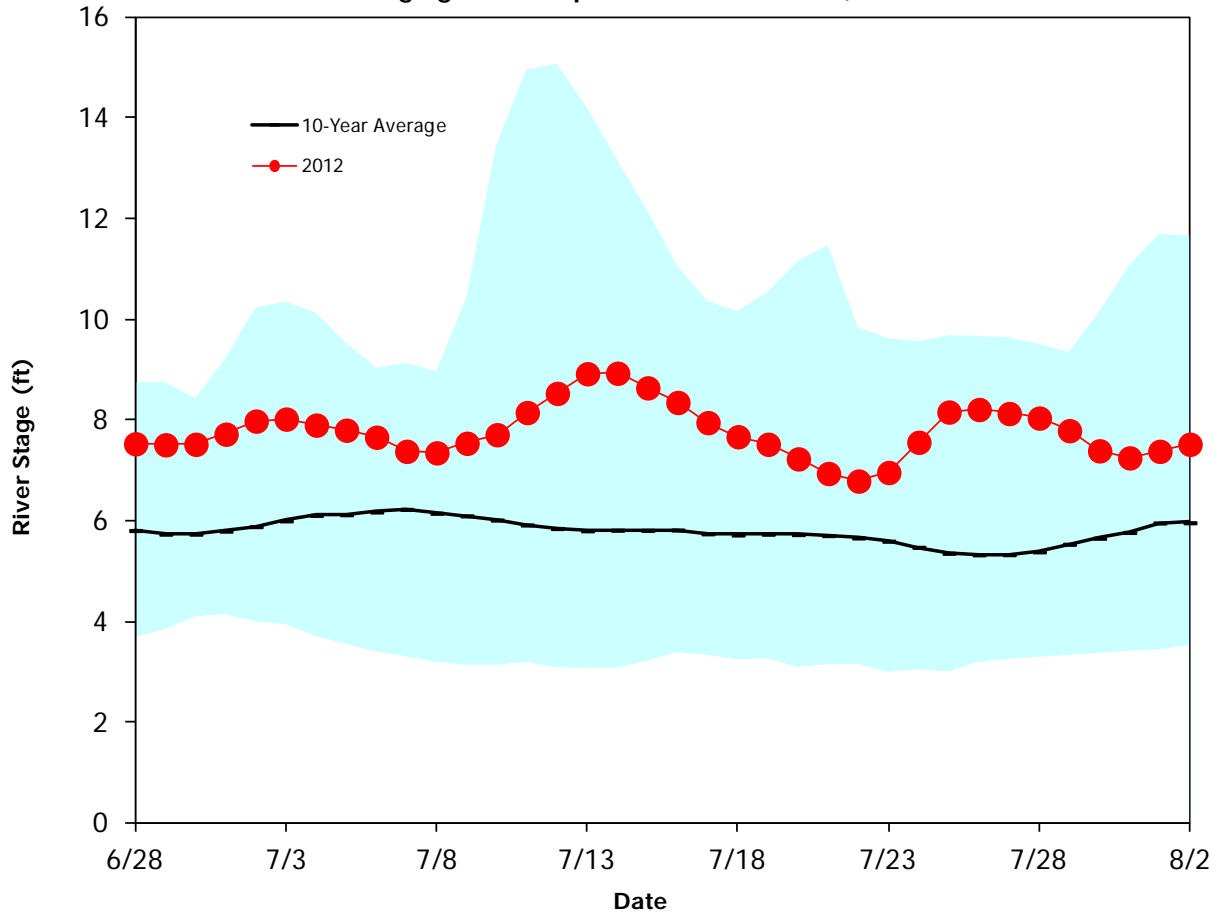
**KNA Weekly Subsistence Fishing Reports
July 26 - August 2, 2012**

VILLAGE	GEAR TYPE	SPECIES	Run Timing Compared to Most Years (Early, Average, Late)	Run Strength Compared to Most Years (Below Avg., Avg, Above Avg.)
Crooked Creek	Rod 'n' Reel			
Comments: Tried to fish with rod 'n' reel. Will fish for silvers pretty soon.		Chinook		
		Chum		
		Sockeye		
		Coho		
Sleetmute				
Comments: Too much rain to fish waiting on silvers. As soon as the weather clears up. Everything is slow but everyone got their fish.		Chinook		
		Chum		
		Sockeye		
		Coho		

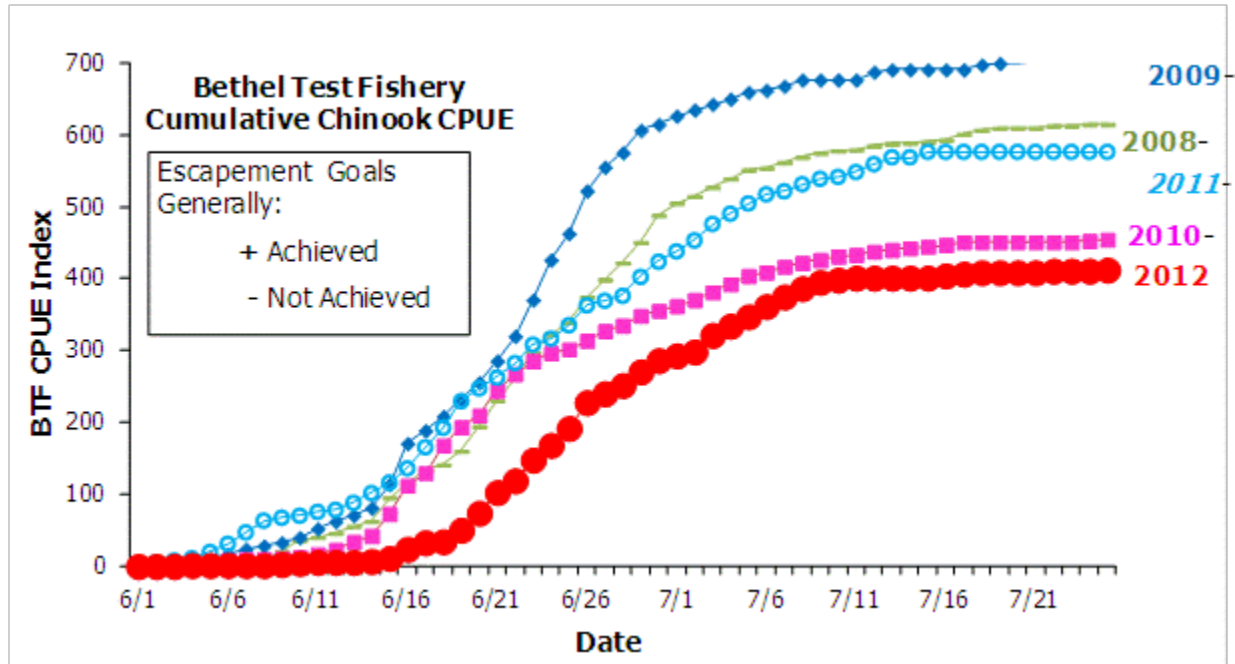
OVERVIEW OF KUSKOKWIM RIVER SALMON RUN ASSESSMENT PROJECTS



Kuskokwim River Water Level at Crooked Creek (2002 to 2011)
Gauging Station Operational On June 28, 2012



Chinook Salmon Cumulative CPUE Index, Bethel Test Fishery

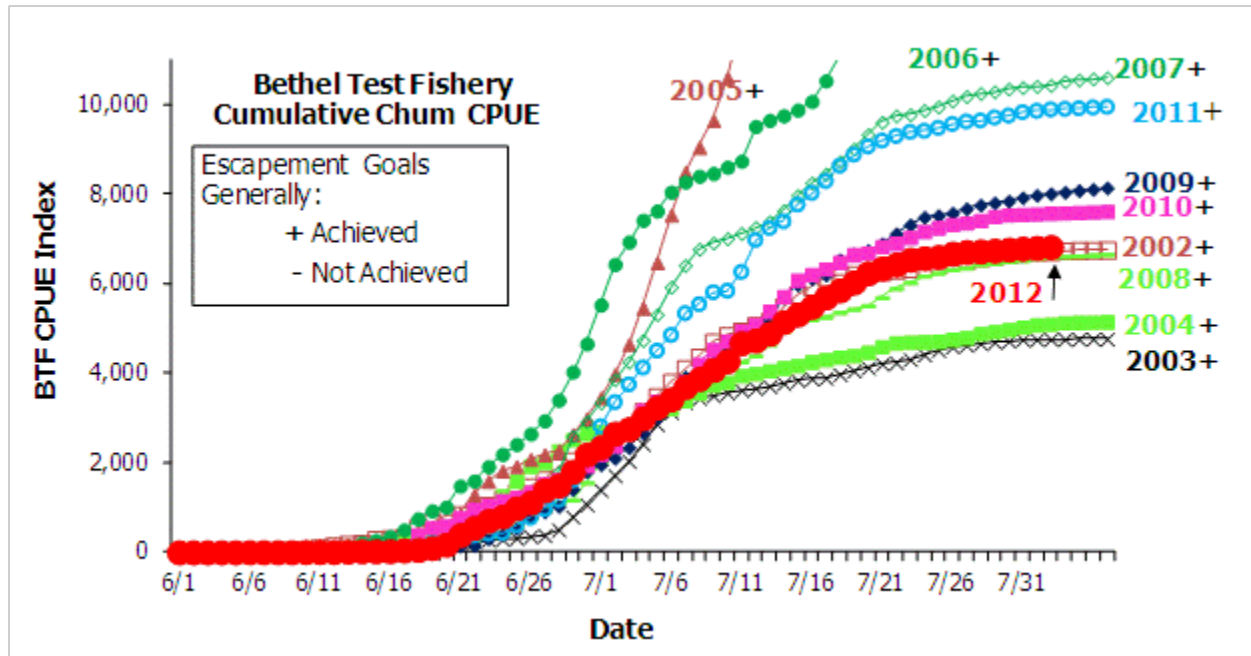


**Bethel Test Fishery
 Chinook Salmon Cumulative CPUE Index
 (UN CORRECTED)**

Note: CPUE index numbers for years prior to 2008 are less comparable due to change in net catchability.

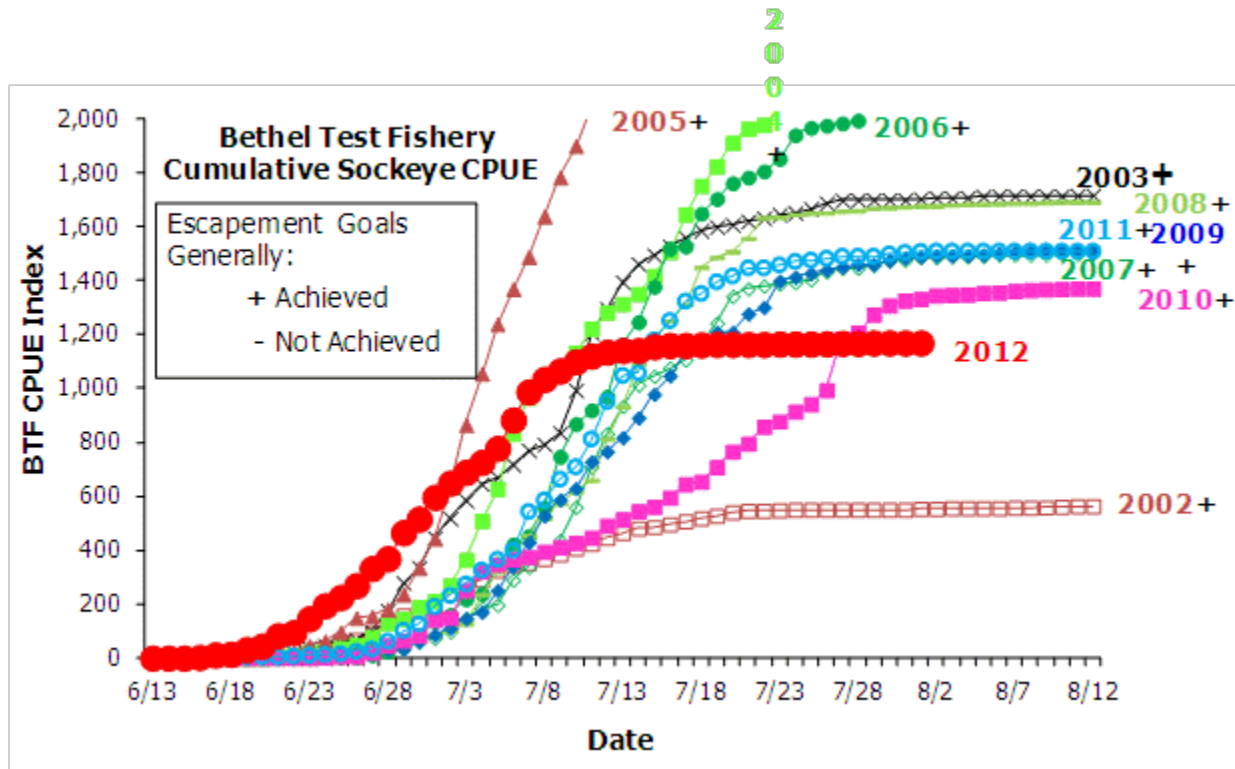
	2002	2003	2004	2005	2006	2007	2008	2009	2010	2011	2012
7/15	395	628	1,055	864	641	495	590	691	445	576	401
7/16	397	631	1,058	864	641	499	593	691	447	576	404
7/17	397	632	1,061	864	644	501	601	691	451	576	407
7/18	397	635	1,064	865	644	501	607	697	451	576	409
7/19	399	638	1,066	867	644	501	609	700	451	576	409
7/20	401	639	1,084	868	644	504	609	700	451	576	409
7/21	401	639	1,113	868	648	506	609	702	451	576	409
7/22	401	639	1,116	868	648	509	613	702	451	576	411
7/23	401	639	1,116	868	648	509	613	702	451	576	411
7/24	403	639	1,122	868	648	511	615	702	453	576	411
7/25	403	640	1,124	868	648	511	615	702	455	576	412

Chum Salmon Cumulative CPUE Index, Bethel Test Fishery



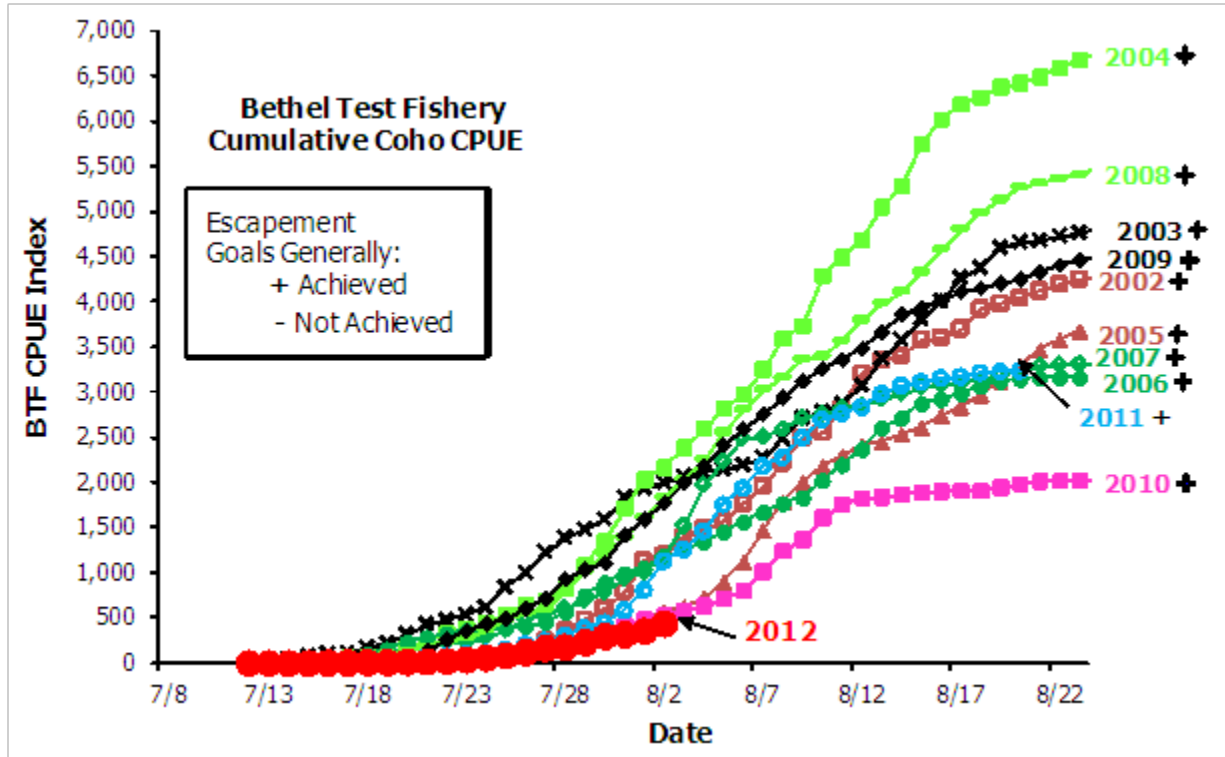
Bethel Test Fishery Chum Salmon Cumulative CPUE Index											
	2002	2003	2004	2005	2006	2007	2008	2009	2010	2011	2012
7/30	6651	4719	4980	17211	13675	10359	6499	7848	7542	9759	6768
7/31	6697	4750	5029	17368	13721	10390	6527	7924	7552	9835	6790
8/01	6717	4755	5084	17523	13746	10416	6582	7979	7565	9864	6805
8/02	6719	4760	5103	17599	13760	10439	6598	8015	7579	9896	6824
8/03	6740	4760	5133	17690	13786	10522	6611	8048	7588	9908	
8/04	6748	4764	5140	17827	13814	10561	6621	8086	7597	9922	
8/05	6751	4764	5147	17916	13832	10583	6639	8113	7607	9939	
8/06	6755	4764	5149	17948	13851	10609	6658	8146	7617	9954	

Sockeye Salmon Cumulative CPUE Index, Bethel Test Fishery

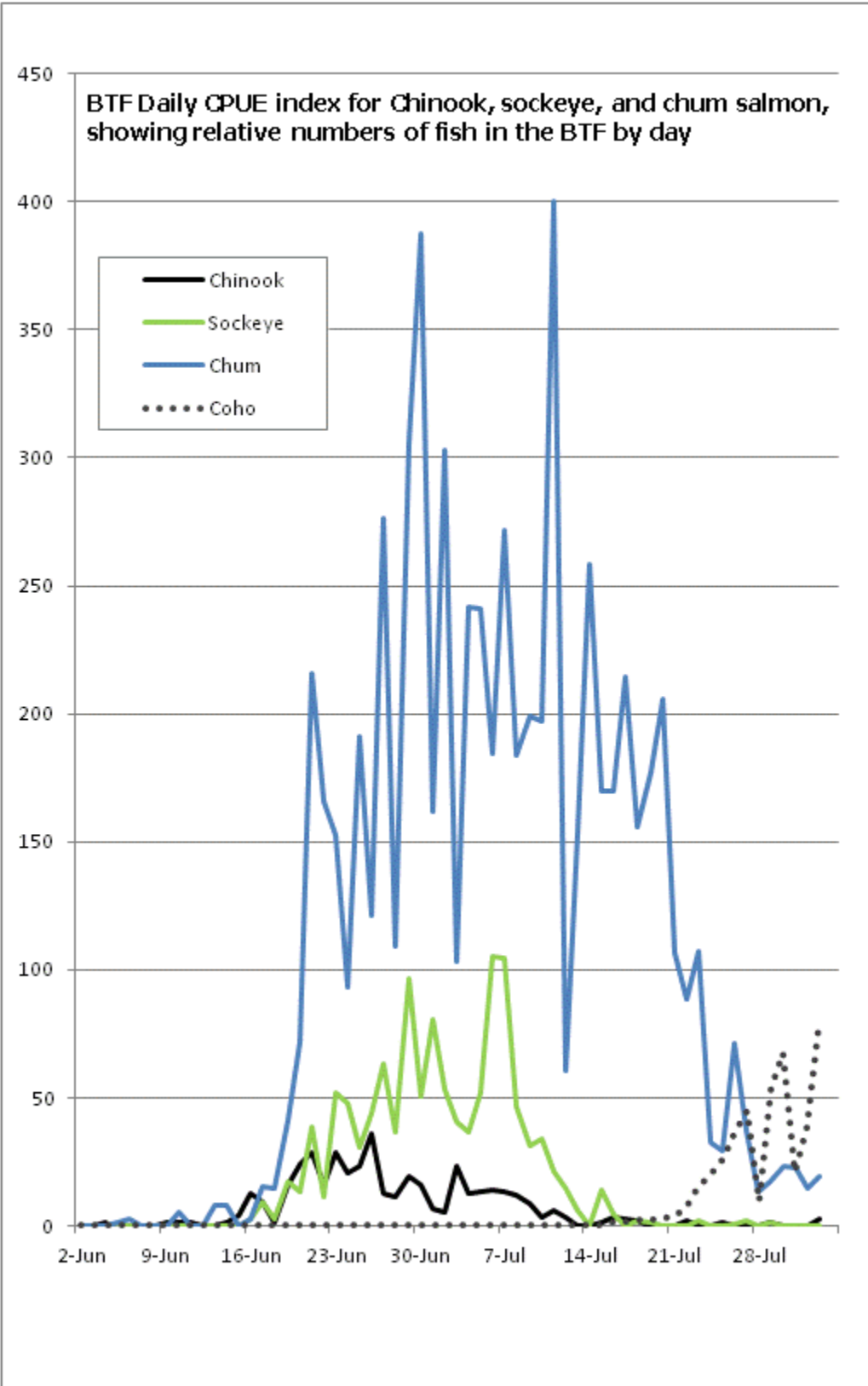


Bethel Test Fishery Sockeye Salmon Cumulative CPUE Index											
	2002	2003	2004	2005	2006	2007	2008	2009	2010	2011	2012
7/30	550	1,700	2,043	2,912	2,026	1,473	1,672	1,476	1,309	1,499	1,170
7/31	550	1,700	2,052	2,923	2,031	1,477	1,674	1,485	1,328	1,505	1,170
8/01	554	1,704	2,059	2,934	2,073	1,488	1,677	1,489	1,333	1,508	1,170
8/02	554	1,708	2,071	2,937	2,077	1,488	1,677	1,493	1,346	1,510	1,170
8/03	556	1,708	2,074	2,939	2,089	1,490	1,682	1,493	1,348	1,510	
8/04	556	1,709	2,079	2,943	2,105	1,490	1,684	1,495	1,350	1,510	
8/05	556	1,713	2,084	2,943	2,107	1,492	1,684	1,497	1,355	1,510	
8/06	556	1,715	2,084	2,943	2,109	1,497	1,685	1,502	1,357	1,510	

Coho Salmon Cumulative CPUE Index, Bethel Test Fishery



Bethel Test Fishery Coho Salmon Cumulative CPUE Index											
	2002	2003	2004	2005	2006	2007	2008	2009	2010	2011	2012
7/30	605	1,596	1,354	262	885	790	1,216	1,112	374	437	296
7/31	794	1,838	1,720	344	985	936	1,393	1,418	421	578	317
8/1	1,129	1,936	2,034	486	1,047	1,008	1,616	1,593	488	802	355
8/2	1,192	2,001	2,173	561	1,158	1,171	1,837	1,777	531	1,126	434
8/3	1,405	2,067	2,389	622	1,250	1,519	2,030	2,000	580	1,252	
8/4	1,483	2,112	2,599	715	1,344	1,975	2,253	2,190	634	1,454	
8/5	1,572	2,147	2,819	892	1,447	2,234	2,560	2,418	713	1,749	
8/6	1,768	2,197	2,982	1,112	1,560	2,491	2,806	2,595	804	1,932	



ESCAPEMENT MONITORING

Status of Salmon Assessment Projects as of August 3, 2012

- Kogrukluk River weir did not operate from July 9th – July 27th.
- Kwethluk River weir did not operate from July 23rd – 29th.

Table footnotes:

- (*) – Indicates a non-operational day.
- (***) – Indicates a partial day of operation.

Chinook Salmon

Kwethluk River weir historical cumulative daily Chinook salmon escapement.											
= years below escapement goal.					Esc Goal Range: 6,000 to 11,000						
Date	Cumulative Daily Passage										
	2002	2003	2004	2005	2006	2007	2008	2009	2010	2011	2012
7/28	7,863	12,909	26,387		16,102	11,464	3,859	5,428	1,522	3,922	796 *
7/29	7,863	12,909	26,387		16,102	11,464	3,859	5,494	1,552	3,956	796 *
7/30	7,863	12,909	26,387		16,102	11,464	3,859	5,555	1,572	3,968	806 ***
7/31	7,863	12,909	26,387		16,102	11,464	3,859	5,586	1,578	3,971	819 ***
8/01	7,863	12,909	26,387		16,102	11,464	3,859	5,618	1,596	3,982	842
8/02	7,863	12,909	26,387		16,102	11,464	3,859	5,634	1,617	3,992	868
8/03	7,863	12,909	26,387		16,102	11,464	3,859	5,653	1,630	4,000	
8/04	7,863	12,909	26,387		16,102	11,464	3,859	5,671	1,633	4,004	
8/05	7,863	12,909	26,387		16,102	11,464	3,859	5,688	1,636	4,009	
Season											
Total	8,502	14,474	28,604	n.a.	17,618	12,927	5,275	5,744	1,693	4,079	

Tuluksak River weir historical cumulative daily Chinook salmon escapement.											
= years below escapement goal.					Esc Goal Range: 1,000 to 2,100						
Date	Cumulative Daily Passage										
	2002	2003	2004	2005	2006	2007	2008	2009	2010	2011	2012
7/28	1,244	864	1,347	2,499	800	311	484	280	153	265	499
7/29	1,244	864	1,347	2,499	800	311	484	299	162	268	503
7/30	1,244	864	1,347	2,499	800	311	484	304	173	268	503
7/31	1,244	864	1,347	2,499	800	311	484	306	179	268	504
8/01	1,244	864	1,347	2,499	800	311	484	321	181	269	509
8/02	1,244	864	1,347	2,499	800	311	484	329	183	269	511
8/03	1,244	864	1,347	2,499	800	311	484	340	185	269	
8/04	1,244	864	1,347	2,499	800	311	484	344	185	269	
8/05	1,244	864	1,347	2,499	800	311	484	350	186	269	
Season											
Total	1,346	1,064	1,475	2,653	1,043	394	701	362	201	288	

Chinook Salmon (continued)

Salmon River weir, Aniak River historical cumulative daily Chinook salmon							
Esc Goal Range: none							
Date	Cumulative Daily Passage						
	2006	2007	2008	2009	2010	2011	2012
7/28	5,890	4,895	1,952	1,052			236
7/29	6,014	4,996	1,971	1,155	Not	Not	293
7/30	6,078	5,116	1,995	1,180	operated	operated	312
7/31	6,160	5,243	2,036	1,251	2010	2011	319
8/01	6,235	5,338	2,051	1,288			327
8/02	6,349	5,409	2,108	1,312			366
8/03	6,451	5,479	2,147	1,390			
8/04	6,535	5,505	2,166	1,437			
8/05	6,597	5,700	2,229	1,455			
Season							
Total	6,732	6,220	2,376	1,548	n.a.	n.a.	

George River weir historical cumulative daily Chinook salmon escapement.											
Esc Goal Range: 3,100 to 7,900											
= years below escapement goal.											
Date	Cumulative Daily Passage										
	2002	2003	2004	2005	2006	2007	2008	2009	2010	2011	2012
7/28	2,323	4,521	4,973	3,672	4,152	4,662	2,381	3,539	1,402	1,540	2,022
7/29	2,323	4,521	4,973	3,672	4,152	4,662	2,381	3,579	1,415	1,546	2,026
7/30	2,323	4,521	4,973	3,672	4,152	4,662	2,381	3,582	1,420	1,551	2,030
7/31	2,323	4,521	4,973	3,672	4,152	4,662	2,381	3,603	1,437	1,553	2,036
8/01	2,323	4,521	4,973	3,672	4,152	4,662	2,381	3,616	1,449	1,557	2,036
8/02	2,323	4,521	4,973	3,672	4,152	4,662	2,381	3,622	1,453	1,558	2,038
8/03	2,323	4,521	4,973	3,672	4,152	4,662	2,381	3,627	1,464	1,559	
8/04	2,323	4,521	4,973	3,672	4,152	4,662	2,381	3,629	1,464	1,560	
8/05	2,323	4,521	4,973	3,672	4,152	4,662	2,381	3,630	1,465	1,560	
Season											
Total	2,444	4,693	5,207	3,845	4,357	4,883	2,698	3,663	1,500	1,571	

Kogrukuk River weir historical cumulative daily Chinook salmon escapement.											
Esc Goal Range: 5,300 to 14,000											
= years below escapement goal.											
Date	Cumulative Daily Passage										
	2002	2003	2004	2005	2006	2007	2008	2009	2010	2011	2012
7/28	9893	11196	18600	20542	17166	11588	8221	8193	4305	5391	273 **
7/29	9925	11281	18750	20777	17584	11945	8507	8481	4568	5676	522
7/30	9956	11367	18871	20944	17858	12084	8687	8732	4788	5771	701 **
7/31	9964	11410	18977	21076	18107	12137	8880	8944	4868	5843	701 *
8/01	9987	11449	19054	21157	18293	12191	9002	9118	4876	5959	735 **
8/02	9999	11489	19122	21288	18462	12287	9122	9254	4993	6069	825
8/03	10010	11519	19166	21392	18624	12429	9227	9353	5096	6256	
8/04	10020	11550	19226	21490	18751	12533	9309	9406	5187	6374	
8/05	10031	11573	19296	21554	18912	12622	9397	9473	5221	6462	
Season											
Total	10,104	11,771	19,651	22,000	19,414	13,029	9,730	9,702	5,690	6,891	

Chinook Salmon (continued)

Tatlawiksuk River weir historical cumulative daily Chinook salmon escapement.											
	Esc Goal Range: none										
Date	Cumulative Daily Passage										
	2002	2003	2004	2005	2006	2007	2008	2009	2010	2011	2012
7/28	2,151	1,544	2,710	2,814	1,586	1,971	890	1,024	507	973	1,078
7/29	2,151	1,544	2,710	2,814	1,586	1,971	890	1,032	508	978	1,080
7/30	2,151	1,544	2,710	2,814	1,586	1,971	890	1,036	512	980	1,084
7/31	2,151	1,544	2,710	2,814	1,586	1,971	890	1,039	514	981	1,084
8/01	2,151	1,544	2,710	2,814	1,586	1,971	890	1,041	518	985	1,089
8/02	2,151	1,544	2,710	2,814	1,586	1,971	890	1,044	528	987	1,093
8/03	2,151	1,544	2,710	2,814	1,586	1,971	890	1,047	533	990	
8/04	2,151	1,544	2,710	2,814	1,586	1,971	890	1,049	537	992	
8/05	2,151	1,544	2,710	2,814	1,586	1,971	890	1,051	537	995	
Season											
Total	2,237	1,683	2,833	2,920	1,700	2,061	1,071	1,071	567	1,012	

Talotna River weir historical cumulative daily Chinook salmon escapement.											
	Esc Goal Range: none										
Date	Cumulative Daily Passage										
	2002	2003	2004	2005	2006	2007	2008	2009	2010	2011	2012
7/28	275	295	411	453	451	364	307	265	127	123	217
7/29	275	295	411	453	451	364	307	279	130	127	219
7/30	275	295	411	453	451	364	307	285	140	129	220
7/31	275	295	411	453	451	364	307	293	148	131	220
8/01	275	295	411	453	451	364	307	295	153	132	220
8/02	275	295	411	453	451	364	307	296	153	132	220
8/03	275	295	411	453	451	364	307	302	155	132	
8/04	275	295	411	453	451	364	307	304	163	132	
8/05	275	295	411	453	451	364	307	304	164	132	
Season											
Total	316	378	461	499	539	418	413	311	178	136	

Chum Salmon

Kwethluk River weir historical cumulative daily chum salmon escapement.												
											Esc Goal Range: none	
Date	Cumulative Daily Passage											
	2002	2003	2004	2005	2006	2007	2008	2009	2010	2011	2012	
7/28	27,987	25,076	30,070		40,245	39,714	12,302	24,452	16,007	15,158	2,741	*
7/29	27,987	25,076	30,070		40,245	39,714	12,302	25,516	16,465	15,555	2,741	*
7/30	27,987	25,076	30,070		40,245	39,714	12,302	26,461	16,908	15,844	2,776	**
7/31	27,987	25,076	30,070		40,245	39,714	12,302	26,984	17,035	16,009	2,849	**
8/01	27,987	25,076	30,070		40,245	39,714	12,302	27,844	17,425	16,423	3,020	
8/02	27,987	25,076	30,070		40,245	39,714	12,302	28,470	17,859	16,834	3,284	
8/03	27,987	25,076	30,070		40,245	39,714	12,302	28,890	18,132	16,965		
8/04	27,987	25,076	30,070		40,245	39,714	12,302	29,643	18,282	17,202		
8/05	27,987	25,076	30,070		40,245	39,714	12,302	30,015	18,392	17,298		
Season												
Total	35,854	41,812	38,646	n.a.	47,490	54,913	20,030	32,191	19,242	18,329		

Tuluksak River weir historical cumulative daily chum salmon escapement.												
											Esc Goal Range: none	
Date	Cumulative Daily Passage											
	2002	2003	2004	2005	2006	2007	2008	2009	2010	2011	2012	
7/28	7,499	5,305	9,452	28,407	18,533	11,744	8,343	9,098	10,055	6,744	11,574	
7/29	7,499	5,305	9,452	28,407	18,533	11,744	8,343	9,784	10,502	7,085	11,776	
7/30	7,499	5,305	9,452	28,407	18,533	11,744	8,343	10,082	10,855	7,200	12,135	
7/31	7,499	5,305	9,452	28,407	18,533	11,744	8,343	10,319	11,162	7,375	12,615	
8/01	7,499	5,305	9,452	28,407	18,533	11,744	8,343	10,756	11,286	7,635	13,140	
8/02	7,499	5,305	9,452	28,407	18,533	11,744	8,343	11,054	11,494	7,917	13,870	
8/03	7,499	5,305	9,452	28,407	18,533	11,744	8,343	11,539	11,562	8,339		
8/04	7,499	5,305	9,452	28,407	18,533	11,744	8,343	11,919	11,678	8,510		
8/05	7,499	5,305	9,452	28,407	18,533	11,744	8,343	12,133	11,784	8,647		
Season												
Total	9,958	11,724	11,796	35,696	25,650	17,647	12,550	13,671	13,042	10,010		

Salmon River weir, Aniak River historical cumulative daily chum salmon							
							Esc Goal Range: none
Date	Cumulative Daily Passage						
	2006	2007	2008	2009	2010	2011	2012
7/28	35,986	20,515	6,231	4,433			1,650
7/29	36,655	21,125	6,704	4,898			1,737
7/30	37,063	21,667	6,914	5,403			1,810
7/31	37,661	22,144	7,295	5,794			1,868
8/01	38,111	22,673	7,642	6,136			1,912
8/02	38,565	23,258	8,016	6,449			2,025
8/03	38,998	23,626	8,226	6,928			
8/04	39,395	23,937	8,411	7,291			
8/05	39,655	24,213	8,707	7,631			
Season							
Total	40,306	25,379	9,459	9,297	n.a.	n.a.	

Chum Salmon (continued)

George River weir historical cumulative daily chum salmon escapement.											
	Esc Goal Range: none										
Date	Cumulative Daily Passage										
	2002	2003	2004	2005	2006	2007	2008	2009	2010	2011	2012
7/28	5,858	21,002	12,555	11,857	34,241	40,739	23,931	6,695	22,133	38,920	28,875
7/29	5,858	21,002	12,555	11,857	34,241	40,739	23,931	6,938	22,543	39,623	29,293
7/30	5,858	21,002	12,555	11,857	34,241	40,739	23,931	7,030	23,065	40,222	29,596
7/31	5,858	21,002	12,555	11,857	34,241	40,739	23,931	7,195	23,505	40,771	29,882
8/01	5,858	21,002	12,555	11,857	34,241	40,739	23,931	7,281	23,880	41,318	30,071
8/02	5,858	21,002	12,555	11,857	34,241	40,739	23,931	7,382	24,166	41,882	30,375
8/03	5,858	21,002	12,555	11,857	34,241	40,739	23,931	7,495	24,448	42,283	
8/04	5,858	21,002	12,555	11,857	34,241	40,739	23,931	7,530	24,676	42,780	
8/05	5,858	21,002	12,555	11,857	34,241	40,739	23,931	7,566	24,831	42,961	
Season											
Total	6,543	33,666	14,409	14,828	41,467	55,842	29,978	7,941	26,154	44,640	

Kogrukuk River weir historical cumulative daily chum salmon escapement.											
	Esc Goal Range: 15,000 to 49,000										
	= years below escapement goal.										
Date	Cumulative Daily Passage										
	2002	2003	2004	2005	2006	2007	2008	2009	2010	2011	2012
7/28	49,354	18,935	18,821	145,986	142,843	34,067	24,783	56,093	47,807	55,544	3,930 ***
7/29	49,354	18,935	18,821	145,986	142,843	34,067	24,783	59,218	49,835	59,052	7,248
7/30	49,354	18,935	18,821	145,986	142,843	34,067	24,783	62,125	51,331	60,675	9,548 **
7/31	49,354	18,935	18,821	145,986	142,843	34,067	24,783	64,812	52,807	62,472	9,548 *
8/01	49,354	18,935	18,821	145,986	142,843	34,067	24,783	67,281	54,018	64,659	9,937 ***
8/02	49,354	18,935	18,821	145,986	142,843	34,067	24,783	69,531	55,015	66,725	10,961
8/03	49,354	18,935	18,821	145,986	142,843	34,067	24,783	71,563	56,284	68,911	
8/04	49,354	18,935	18,821	145,986	142,843	34,067	24,783	73,325	57,354	70,613	
8/05	49,354	18,935	18,821	145,986	142,843	34,067	24,783	75,188	58,266	71,892	
Season											
Total	51,570	23,413	24,201	197,723	180,594	49,505	44,978	84,940	63,583	76,384	

Tatlawiksuk River weir historical cumulative daily chum salmon escapement.											
	Esc Goal Range: none										
Date	Cumulative Daily Passage										
	2002	2003	2004	2005	2006	2007	2008	2009	2010	2011	2012
7/28	22,660		18,129	47,794	27,672	67,270	25,137	16,982	32,694	76,336	41,229
7/29	22,661		18,129	47,794	27,672	67,270	25,137	17,251	33,211	77,797	41,862
7/30	22,662		18,129	47,794	27,672	67,270	25,137	17,383	33,739	79,168	42,379
7/31	22,663		18,129	47,794	27,672	67,270	25,137	17,757	34,212	80,172	42,672
8/01	22,664		18,129	47,794	27,672	67,270	25,137	18,010	34,666	81,104	43,019
8/02	22,665		18,129	47,794	27,672	67,270	25,137	18,317	35,039	81,779	43,368
8/03	22,666		18,129	47,794	27,672	67,270	25,137	18,677	35,355	82,269	
8/04	22,667		18,129	47,794	27,672	67,270	25,137	18,925	35,624	82,659	
8/05	22,668		18,129	47,794	27,672	67,270	25,137	19,118	35,836	82,969	
Season											
Total	24,542	n.a.	21,245	55,720	32,301	83,246	30,896	19,975	36,701	84,202	

Chum Salmon (continued)

Takotna River weir historical cumulative daily chum salmon escapement.											
	Esc Goal Range: none										
Date	Cumulative Daily Passage										
	2002	2003	2004	2005	2006	2007	2008	2009	2010	2011	2012
7/28	4,044	2,806	1,460	5,487	10,337	7,610	4,707	1,895	3,501	7,593	5,431
7/29	4,044	2,806	1,460	5,487	10,337	7,610	4,707	1,995	3,590	7,720	5,540
7/30	4,044	2,806	1,460	5,487	10,337	7,610	4,707	2,076	3,658	7,866	5,617
7/31	4,044	2,806	1,460	5,487	10,337	7,610	4,707	2,188	3,709	8,014	5,690
8/01	4,044	2,806	1,460	5,487	10,337	7,610	4,707	2,232	3,761	8,117	5,738
8/02	4,044	2,806	1,460	5,487	10,337	7,610	4,707	2,246	3,811	8,187	5,792
8/03	4,044	2,806	1,460	5,487	10,337	7,610	4,707	2,272	3,862	8,229	
8/04	4,044	2,806	1,460	5,487	10,337	7,610	4,707	2,325	3,898	8,263	
8/05	4,044	2,806	1,460	5,487	10,337	7,610	4,707	2,378	3,934	8,291	
Season											
Total	4,399	3,388	1,633	6,488	12,651	8,873	5,704	2,528	4,057	8,414	

Sockeye Salmon

Kwethluk River weir historical cumulative daily sockeye salmon escapement.												
Esc Goal: none												
Date	Cumulative Daily Passage											
	2002	2003	2004	2005	2006	2007	2008	2009	2010	2011	2012	
7/28	228	2,757	3,294		6,241	4,483	2,083	4,024	4,056	1,963	228	*
7/29	228	2,757	3,294		6,241	4,483	2,083	4,079	4,079	1,969	228	*
7/30	228	2,757	3,294		6,241	4,483	2,083	4,113	4,092	1,973	228	**
7/31	228	2,757	3,294		6,241	4,483	2,083	4,133	4,113	1,973	228	**
8/01	228	2,757	3,294		6,241	4,483	2,083	4,145	4,135	1,974	230	
8/02	228	2,757	3,294		6,241	4,483	2,083	4,154	4,163	1,974	231	
8/03	228	2,757	3,294		6,241	4,483	2,083	4,168	4,181	1,974		
8/04	228	2,757	3,294		6,241	4,483	2,083	4,185	4,190	1,974		
8/05	228	2,757	3,294		6,241	4,483	2,083	4,192	4,198	1,974		
Season Total	272	2,928	3,491	n.a.	6,732	5,262	2,451	4,230	4,242	2,031		

Kogrukluk River weir historical cumulative daily sockeye salmon escapement.												
Esc Goal Range: 4,400 to 17,000												
= years below escapement goal.												
Date	Cumulative Daily Passage											
	2002	2003	2004	2005	2006	2007	2008	2009	2010	2011	2012	
7/28	3,950	8,422	6,056	33,939	49,672	10,180	13,025	18,073	8,524	7,054	145	**
7/29	3,950	8,422	6,056	33,939	49,672	10,180	13,025	19,043	9,420	7,290	600	
7/30	3,950	8,422	6,056	33,939	49,672	10,180	13,025	19,891	10,343	7,397	874	**
7/31	3,950	8,422	6,056	33,939	49,672	10,180	13,025	20,617	10,986	7,483	874	*
8/01	3,950	8,422	6,056	33,939	49,672	10,180	13,025	21,221	11,582	7,605	897	**
8/02	3,950	8,422	6,056	33,939	49,672	10,180	13,025	21,704	11,871	7,704	963	
8/03	3,950	8,422	6,056	33,939	49,672	10,180	13,025	22,065	12,409	7,791		
8/04	3,950	8,422	6,056	33,939	49,672	10,180	13,025	22,252	12,569	7,865		
8/05	3,950	8,422	6,056	33,939	49,672	10,180	13,025	22,543	12,705	7,919		
Season Total	4,050	9,164	6,775	37,939	60,807	16,525	19,675	23,785	13,995	8,132		

Telequana Lake Weir historical cumulative daily sockeye salmon escapement.			
Esc Goal Range: none			
Date	Cumulative Daily Passage		
	2010	2011	2012
7/28	28,991	32,240	17,964
7/29	32,104	32,618	18,844
7/30	35,053	32,867	19,887
7/31	40,295	33,210	20,309
8/01	45,530	33,560	20,778
8/02	50,834	33,812	20,893
8/03	55,169	34,051	
8/04	58,811	34,171	
8/05	61,893	34,314	
Season Total	72,021	34,314	

Coho Salmon

Kwethluk River historical cumulative daily coho salmon escapement.												
	Esc Goal: >19,000											
Date	Cumulative Daily Passage											
	2002	2003	2004	2005	2006	2007	2008	2009	2010	2011	2012	
7/28	0	405	344		565	517	199	98	3	75	0	*
7/29	15	490	449		605	561	322	244	3	91	0	*
7/30	32	523	606		623	610	381	352	7	96	11	**
7/31	84	775	758		679	731	459	427	8	102	31	**
8/1	142	840	927		796	877	545	539	8	121	74	
8/2	202	1,142	1,109		1,025	1,032	809	610	8	173	170	
8/3	287	1,419	1,195		1,366	1,276	859	636	8	193		
8/4	401	1,500	1,278		1,670	1,447	1,259	873	22	256		
8/5	423	1,831	1,630		1,806	2,495	1,427	1,263	36	296		
Season												
Total	23,298	109,163	64,216	0	0	25,664	20,257	49,971	21,911	n.a	4,482	

Tuluksak River weir historical cumulative daily coho salmon escapement.											
	Esc Goal: none										
Date	Cumulative Daily Passage										
	2002	2003	2004	2005	2006	2007	2008	2009	2010	2011	2012
7/28	0	31	87	17	50	33	22	2	1	12	56
7/29	2	76	143	19	51	38	22	7	7	13	67
7/30	4	95	176	24	74	43	33	7	10	13	74
7/31	4	106	237	38	102	49	45	11	14	13	79
8/01	5	121	281	67	111	60	72	14	17	15	91
8/02	5	136	324	80	136	65	98	16	18	24	138
8/03	8	139	399	91	166	86	126	26	20	33	
8/04	16	152	463	123	222	124	155	68	20	45	
8/05	18	190	521	165	271	223	193	94	23	52	
Season											
Total	11,487	41,071	20,336	11,324	6,111	2,807	7,457	8,137	1,216	92	

George River weir historical cumulative daily coho salmon escapement.											
	Esc Goal: none										
Date	Cumulative Daily Passage										
	2002	2003	2004	2005	2006	2007	2008	2009	2010	2011	2012
7/28	1	92	9	26	17	62	10	3	1	24	1
7/29	4	104	13	34	23	66	13	8	7	34	6
7/30	5	116	15	41	29	73	20	14	13	42	11
7/31	6	127	25	47	35	85	33	29	21	65	17
8/01	8	148	42	57	46	113	51	47	32	84	27
8/02	17	178	52	74	50	152	78	54	40	152	45
8/03	30	201	58	87	56	197	96	65	55	261	
8/04	52	223	101	94	71	278	147	72	65	347	
8/05	68	285	143	112	96	661	199	76	77	371	
Season											
Total	6,759	33,280	12,499	8,200	11,296	29,317	21,931	12,464	12,961		

Coho Salmon (continued)

Kogrukluk River weir historical cumulative daily coho salmon escapement.

█ = years below escapement goal.

Esc Goal Range: 13,000 to 28,000

Date	Cumulative Daily Passage										
	2002	2003	2004	2005	2006	2007	2008	2009	2010	2011	2012
7/28	25	85	46	16	100	22	7	0	0	4	0 **
7/29	25	112	61	37	109	29	12	10	1	7	0
7/30	25	139	81	54	120	46	26	31	1	8	3 **
7/31	25	164	96	62	138	52	35	62	1	9	3 *
8/01	25	211	129	83	150	67	42	104	1	13	4 **
8/02	28	278	151	112	175	90	54	155	1	15	16
8/03	34	329	162	155	218	130	88	218	1	24	
8/04	39	380	208	189	283	174	122	259	1	32	
8/05	45	417	281	206	386	233	191	363	1	43	
Season											
Total	14,516	74,604	27,041	24,116	17,011	27,033	29,661	22,981	13,971	24,174	

Tatlawiksuk River weir historical cumulative daily coho salmon escapement.

Esc Goal: none

Date	Cumulative Daily Passage										
	2002	2003	2004	2005	2006	2007	2008	2009	2010	2011	2012
7/28	6		92	71	82	65	34	5	1	11	4
7/29	9		110	90	108	75	46	11	2	15	5
7/30	17		125	127	138	109	50	20	4	39	6
7/31	20		231	165	195	147	131	28	7	58	16
8/01	25		286	185	247	197	198	54	10	86	34
8/02	36		379	214	297	220	226	78	18	104	34
8/03	52		477	284	336	264	299	208	28	124	
8/04	56		605	320	391	323	452	285	42	148	
8/05	89		819	356	438	424	534	346	83	177	
Season											
Total	11,345	n.a.	16,410	7,495	9,453	8,685	11,065	10,148	3,520	12,928	

Takotna River weir historical cumulative daily coho salmon escapement.

Esc Goal: none

Date	Cumulative Daily Passage										
	2002	2003	2004	2005	2006	2007	2008	2009	2010	2011	2012
7/28	0	11	0	7	0	3	0	2	0	2	0
7/29	0	15	0	10	0	5	0	2	0	2	0
7/30	1	20	0	11	1	6	0	2	0	2	0
7/31	2	25	1	11	2	6	1	2	0	2	0
8/01	2	31	2	13	3	9	2	3	0	2	0
8/02	2	35	3	15	5	11	3	3	0	2	2
8/03	2	43	3	16	13	15	6	3	0	2	
8/04	2	56	6	24	28	26	9	4	0	2	
8/05	2	71	10	31	36	41	11	5	0	2	
Season											
Total	3,982	7,146	3,201	2,209	5,556	2,837	2,807	2,704	3,217	4,063	

COMMERCIAL CATCH REPORT:

District 1 Commercial Openings for 2012

Date	Subdistrict	Permits	Hours	Chinook		Sockeye		Chum		Coho	
				Catch	CPUE	Catch	CPUE	Catch	CPUE	Catch	CPUE
7/13/2012	1-B ^a	151	4	96	0.16	1,041	1.72	16,270	26.94	20	0.03
7/16/2012	1-A ^a	46	4	75	0.41	301	1.64	6,773	36.81	5	0.03
7/17/2012	1-B ^a	152	4	64	0.11	707	1.16	11,793	19.40	122	0.20
7/19/2012	1-A ^a	52	4	49	0.24	209	1.00	6,046	29.07	220	1.06
7/20/2012	1-B ^a	157	4	112	0.18	162	0.26	8,753	13.94	489	0.78
7/23/2012	1-A ^a	41	4	18	0.11	135	0.82	3,859	23.53	324	1.98
7/24/2012	1-B ^a	132	4	6	0.01	52	0.10	2,893	5.48	1,562	2.96
7/26/2012	1-A ^a	53	4	11	0.05	31	0.15	3,257	15.36	1,549	7.31
7/27/2012	1-B ^a	139	4	6	0.01	101	0.18	1,845	3.32	2,908	5.23
7/30/2012	1-A ^a	59	4	6	0.03	11	0.05	1,131	4.79	4,815	20.40
7/31/2012	1-B ^a	133	4	4	0.01	33	0.06	626	1.18	3,388	6.37
8/2/2012	1-A ^a	64	4	6	0.02	7	0.03	485	1.89	3,436	13.42

Footnotes

^a All Chinook harvested during the commercial opening were not sold but kept as personal use.

^b Incomplete verbal report.

In-season data is preliminary, subject to change

