

# Kuskokwim River Salmon Management Working Group

1 (800) 315-6338 (MEET) Code: 58756# (KUSKO)

ADF&G Bethel toll free: 1 (855) 933-2433

## Meeting Agenda

Date: 7/8/2014

Time: 1:30pm

Place: Bethel

---

Time Called to Order:

Chair:

Time Adjourned:

### ROLL CALL TO ESTABLISH QUORUM:

Upriver Elder:

Downriver Elder:

Commercial Fisher:

Lower River Subsistence:

Middle River Subsistence:

Upper River Subsistence:

Headwaters Subsistence:

### QUORUM MET? Yes / No

Processor:

Member at Large:

Sport Fisher:

Western Interior RAC:

Y-K Delta RAC:

ADF&G:

### INTRODUCTIONS:

### INVOCATION:

**APPROVAL OF AGENDA:** *the agenda may be amended at this time.*

**APPROVAL OF MINUTES:** *Optional. ADF&G does not prepare official meeting minutes.*

### PEOPLE TO BE HEARD:

### CONTINUING BUSINESS:

1. Subsistence Reports:
  - a. Lowest River
  - b. ONC Inseason Subsistence
  - c. Lower River
  - d. Middle River
  - e. KNA Inseason Subsistence
  - f. Upper River
  - g. Headwaters
2. Overview of Kuskokwim River salmon run assessment projects:
  - a. Bethel Test Fish:
  - b. Weirs/Mark-Recapture/Aerial Surveys/Other:
3. Commercial Catch Report:
4. Processor Report:
5. Sport Fish Report:
6. Intercept Fishery Report: optional
7. Weather Forecast:
8. Recommendation:
9. Motion for Discussion and Action

### OLD BUSINESS:

1. Update on the Yupiit Nation Tribal Fish Forum on 1 July 2014 in Napaskiak

### NEW BUSINESS:

1. Discussion of a Tier II proposal letter submitted to the Board of Fish for the Kuskokwim River

### COMMENTS FROM WORKING GROUP MEMBERS:

**NEXT MEETING DATE:** \_\_\_\_\_ **Time:** \_\_\_\_\_ **Place:** \_\_\_\_\_

## **Informational Packet**

### **Information Packets *ARE*:**

- **Intended to help inform Working Group discussions.**
- **To be viewed and used in context with Working Group meetings only.**

### **Packets *ARE NOT*:**

- **To be viewed as standalone documents.**
- **A final say on fisheries management decisions.**

### **Please use this information responsibly:**

Packet information is an incomplete snapshot of an ongoing discussion and changing conditions. Packet information should not be reproduced for any purpose other than to describe Working Group meeting discussions.

**Misuse** of Packet information can contribute to misunderstandings that can **cause harm to salmon users** and potentially **damage salmon resources**.

**Ask Questions:** ADF&G staff will be happy to answer biology and management questions. Please call **1-855-933-2433** to reach ADF&G Kuskokwim Area staff.

**Attend Meetings:** Each Working Group meeting is announced at least 48 hours prior to time and date of meeting. In addition, each meeting is recorded. Recordings can be found here:  
[http://www.adfg.alaska.gov/index.cfm?adfg=commercialbyarea\\_kuskokwim.kswg](http://www.adfg.alaska.gov/index.cfm?adfg=commercialbyarea_kuskokwim.kswg)

Viewing the information packet while listening to meetings/recordings will provide a better understanding of the information presented in this packet.

**Thank you.**

**Jennifer Peeks**

**Chris Shelden**

**Working Group coordinators**

# Informational Packet

## LOWER KUSKOKWIM RIVER INSEASON CATCH MONITORING REPORT: Orutsararmut Native Council (ONC)

July 7, 2014

### Fishing reports from July 1-6, 2014

Families Surveyed	Families Fishing	Driftnets	Setnets	Both Nets	Larger than 6" mesh	6" mesh and smaller	Both Sizes	Rod & Reel	Dipnet
30	<b>5</b>	4	1	0	0	5	0	0	0
		80%	20%	%	%	100%	%	%	%

Percentages are based on the number of families fishing each week.

### Compared with this time in a normal year, how are catch rates for salmon this week?

CHINOOK			CHUM			SOCKEYE		
Very Good	Normal	Poor	Very Good	Normal	Poor	Very Good	Normal	Poor
0	1	3	1	2	1	1	3	0
0%	20%	60%	20%	40%	20%	20%	60%	0%

Percentages are based on the number of families fishing each week.

### Does the salmon run timing appear to be early, late, or normal?

CHINOOK			CHUM			SOCKEYE		
Early	Normal	Late	Early	Normal	Late	Early	Normal	Late
0	0	4	1	2	1	0	2	2
0%	0%	80%	20%	40%	20%	%	40%	40%

Percentages are based on the number of families fishing each week.

### Harvest Goal Summary:

24 families reported being done fishing. No families met their King harvest goals this year. 13 families met harvest goals for chum and 5 did not. 12 families met harvest goals for sockeye and 6 did not. 6 families did not comment on meeting harvest goals but are done fishing. 1 family reported a harvest goal of 53 mixed salmon species.

#### **Chinook:**

All families that were surveyed this week reported not to have met their harvest goals for Chinook. Some families are reporting catching a few Chinook when driftnet fishing and small jacks are still being caught in set nets.

# Informational Packet

## **Chum:**

1 family reported that they only targeted chum. 1 family reported a chum having different color eggs. 1 family reported seeing dead chum floating down river.

## **Sockeye:**

1 family reported a harvest goal of 100 sockeye. The catch rate for sockeye is slowing down and in set nets big reds getting caught by their lower jaw. More spawning reds are being caught that are headed toward lower tributaries.

## **Comments:**

Fisherman reported drifting with 5 ¾" and 6" mesh. All set nets being used are 4" mesh. One family has not started fishing and one family is fishing for those who aren't.

## **Surveyor comments:**

For the week ending of July 7<sup>th</sup> surveyors observed 10 set nets from Napaskiak to Gweek River and 4 drift net fisherman.

## Informational Packet

### Kuskokwim Native Association – INSEASON SUBSISTENCE REPORT Week of: June 30, 2014

#### KALSKAG

Families Surveyed	Families Fishing	Drift-nets	Set-nets	>6" Mesh	>4"-6" Mesh	4" or Less	Rod & Reel	Dipnet	Fish Wheel
9	5	4	1	0	5	1	0	0	0
		55%	45%	0%	100%	45%	0%	0%	0%

Percentages are based on the number of families fishing each week.

#### **Average Catch based on families surveyed**

CHINOOK	CHUM	SOCKEYE	Other
.67	5.4	10	1.4WF

**Harvester comments:** 3 families letting first batch of fish dry in smokehouse and are waiting for silvers to start running and they will smoke and freeze more of those. 1 family did not fish during the last week due to work and the holiday, but will start fishing again this coming week and try to finish. 1 family done fishing.

#### ANIAK

Families Surveyed	Families Fishing	Drift-nets	Set-nets	>6" Mesh	>4"-6" Mesh	4" or Less	Rod & Reel	Dipnet	Fish Wheel
6	4	4	1	0	4	1	0	0	0
		100%	25%	0%	100%	25%	0%	0%	0%

Percentages are based on the number of families fishing each week.

#### **Average Catch based on families surveyed**

CHINOOK	CHUM	SOCKEYE	Other
1.8	20	1.8	4.5WF .67PK .5DO .17P

**Harvester comments:** 1 fishermen will be fishing right up to freeze-up to meet subsistence needs. 1 fishermen smoking and drying what is in their smokehouse, will fish more for silvers. All families said they will have to fish during the silver run to help met subsistence needs.

## Informational Packet

### **CHUATHBALUK**

Families Surveyed	Families Fishing	Drift-nets	Set-nets	>6" Mesh	>4"-6" Mesh	4" or Less	Rod & Reel	Dipnet	Fish Wheel
3	<b>3</b>	3	0	0	3	0	0	0	0
		100%	0%	0%	100%	0%	0%	0%	0%

Percentages are based on the number of families fishing each week.

#### **Average Catch based on families surveyed**

CHINOOK	CHUM	SOCKEYE	Other
4.6	55	26	4.7WF

**Harvester comments:** 1 family done fishing. Two other families will keep fishing throughout silver run.

### **NAPAIMUTE**

Families Surveyed	Families Fishing	Drift-nets	Set-nets	>6" Mesh	>4"-6" Mesh	4" or Less	Rod & Reel	Dipnet	Fish Wheel
2	<b>1</b>	0	0	0	0	0	0	0	1
		0%	0%	0%	0%	0%	0%	0%	100%

Percentages are based on the number of families fishing each week.

#### **Average Catch based on families surveyed**

CHINOOK	CHUM	SOCKEYE	Other
.5	15	1.5	15WF

**Harvester comments:** 1 family done fishing. 1 family was using fishwheel till right before holiday, may start it again.

### **CROOKED CREEK**

Families Surveyed	Families Fishing	Drift-nets	Set-nets	>6" Mesh	>4"-6" Mesh	4" or Less	Rod & Reel	Dipnet	Fish Wheel
5	<b>4</b>	4	0	0	3	1	0	0	0
		100%	0%	0%	75%	25%	0%	0%	0%

Percentages are based on the number of families fishing each week.

#### **Average Catch based on families surveyed**

CHINOOK	CHUM	SOCKEYE	Other
1.2	23	8.4	.2WF .6SH

## Informational Packet

**Harvester comments:** Families are still fishing; chums and red reports are slower than previous years. 1 family reported chum run to be about average. 1 family did not fish in the last week, will start again.

### GEORGETOWN

Families Surveyed	Families Fishing	Drift-nets	Set-nets	>6" Mesh	>4"-6" Mesh	4" or Less	Rod & Reel	Dipnet	Fish Wheel
6	6	0	0	0	0	0	0	0	1
		0	0	0	0	0	0	0	100%

Percentages are based on the number of families fishing each week.

#### Average Catch based on families surveyed

CHINOOK	CHUM	SOCKEYE	Other
.5	21	15	2.3WF .67PK .5DO

**Harvester comments:** All families have been sharing use of the fishwheel. They are checking the fishwheel 3-4 times per day. They have been fishing since July 4. All chums and Chinook salmon were released.

### RED DEVIL

Families Surveyed	Families Fishing	Drift-nets	Set-nets	>6" Mesh	>4"-6" Mesh	4" or Less	Rod & Reel	Dipnet	Fish Wheel
2	1	0	1	0	0	1	0	0	0
		0%	100%	0%	0%	100%	0%	0%	0%

Percentages are based on the number of families fishing each week.

#### Average Catch based on families surveyed

CHINOOK	CHUM	SOCKEYE	Other
3	13	3	2WF

**Harvester comments:** None.

### SLEETMUTE

Families Surveyed	Families Fishing	Drift-nets	Set-nets	>6" Mesh	>4"-6" Mesh	4" or Less	Rod & Reel	Dipnet	Fish Wheel
4	2	0	1	0	0	1	1	0	0
		0%	50%	0%	0%	50%	50%	0%	0%

Percentages are based on the number of families fishing each week.

#### Average Catch based on families surveyed

CHINOOK	CHUM	SOCKEYE	Other
0	4.5	.5	.5WF

## Informational Packet

**Harvester comments:** 1 family reported the chum & reds were slower running up there this year.

### **STONY RIVER**

Families Surveyed	Families Fishing	Drift-nets	Set-nets	>6" Mesh	>4"-6" Mesh	4" or Less	Rod & Reel	Dipnet	Fish Wheel
-	-	-	-	-	-	-	-	-	-
		-	-	-	-	-	-	-	-

Percentages are based on the number of families fishing each week.

### **Average Catch based on families surveyed**

CHINOOK	CHUM	SOCKEYE	Other
-	-	-	-

**Harvester comments:** No families were able to be reached.

### **LIME VILLAGE**

Families Surveyed	Families Fishing	Drift-nets	Set-nets	>6" Mesh	>4"-6" Mesh	4" or Less	Rod & Reel	Dipnet	Fish Wheel
2	1	0	0	0	0	0	1	0	0
		0%	0%	0%	0%	0%	100%	0%	0%

Percentages are based on the number of families fishing each week.

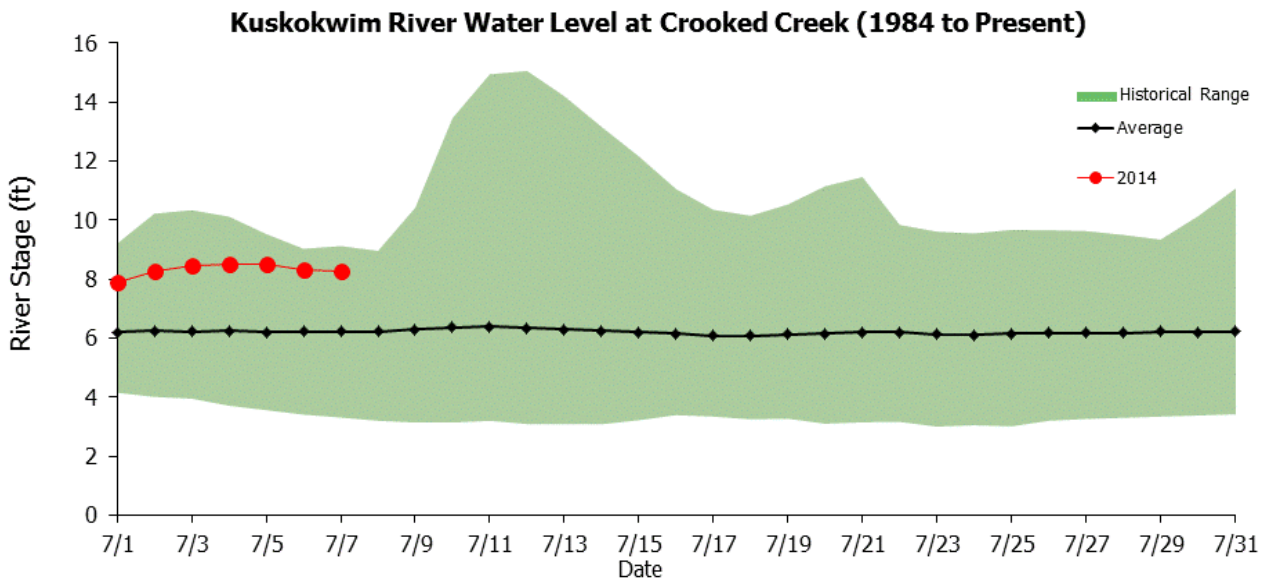
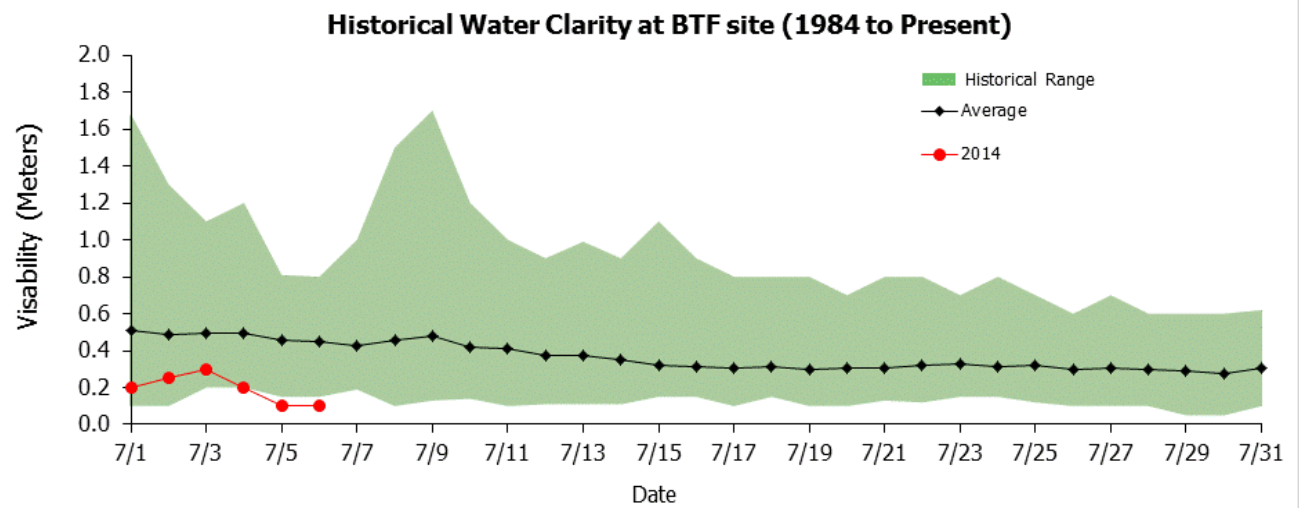
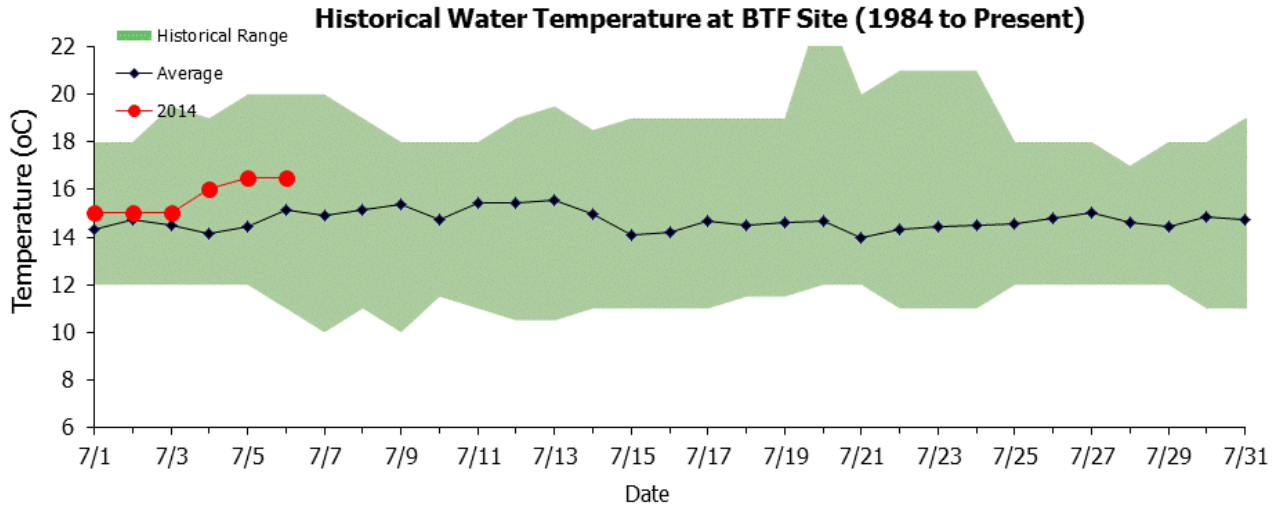
### **Average Catch based on families surveyed**

CHINOOK	CHUM	SOCKEYE	Other
			.5GR

**Harvester comments:** Families will start fishing more towards the end of this week.



# Informational Packet



# Informational Packet

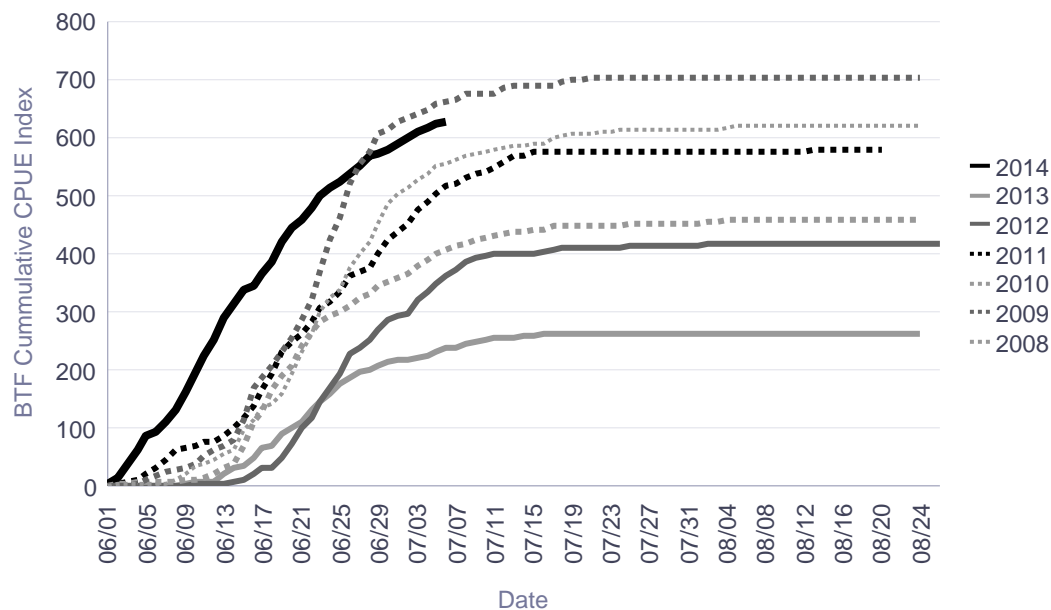
## Chinook Salmon Cumulative CPUE Index, Bethel Test Fishery

### Bethel Test Fishery Chinook Salmon Cumulative CPUE Index

**\*\*2014 data are PRELIMINARY and not comparable to previous years due to subsistence fishing restrictions. \*\***

Date	CPUE						
	2008	2009	2010	2011	2012	2013	2014
06/28	422	575	332	376	251	202	568
06/29	451	606	345	402	270	206	573
06/30	488	614	352	423	286	214	579
07/01	505	626	359	437	293	217	588
07/02	515	634	367	452	298	218	600
07/03	527	642	378	475	321	222	611
07/04	539	649	389	489	334	226	618
07/05	551	658	401	503	347	231	624
07/06	554	661	406	516	361	237	628
07/07	562	667	414	520	374	239	
07/08	569	676	419	530	386	246	
07/09	574	676	423	538	395	248	
07/10	577	676	428	541	398	251	
07/11	578	676	430	548	401	254	
07/12	583	687	434	559	401	255	
07/13	586	690	437	569	401	257	
07/14	587	690	439	569	401	259	
07/15	588	690	441	577	401	260	
07/16	591	690	443	577	404	261	
07/17	599	690	447	577	407	261	

**Bethel Test Fishery, Chinook Salmon Cumulative CPUE**



**Resulting escapement relative to New Kuskokwim River SEG (65,000 - 120,000)**

2008 - Achieved (+) no restrictions

2009 - Achieved (+) no restrictions

2010 - Not Achieved (-) late tributary restrictions

2011 - Achieved (+) 15 days restrictions, minor reduction to subsistence harvest

2012 - Achieved (+) 35 days restrictions, significant reduction to subsistence harvest

2013 - Not Achieved (-) tributary restrictions and late main stem restrictions, significant reduction to subsistence harvest

# Informational Packet

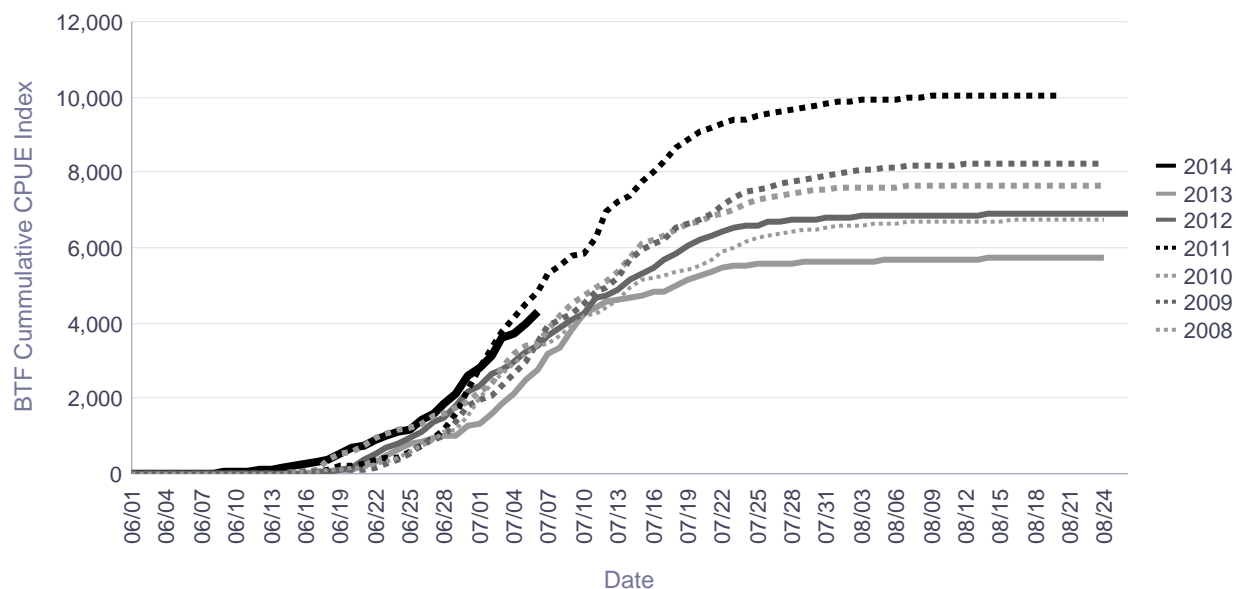
## Chum Salmon Cumulative CPUE Index, Bethel Test Fishery

### Bethel Test Fishery Chum Salmon Cumulative CPUE Index

**\*\*2014 data are PRELIMINARY and not comparable to previous years due to subsistence fishing restrictions. \*\***

Date	CPUE						
	2008	2009	2010	2011	2012	2013	2014
06/28	1,101	1,028	1,613	1,166	1,495	1,007	1,851
06/29	1,178	1,407	1,739	1,607	1,801	1,020	2,155
06/30	1,551	1,800	1,932	2,223	2,188	1,297	2,596
07/01	2,012	1,959	2,197	2,813	2,350	1,349	2,836
07/02	2,379	2,104	2,379	3,354	2,653	1,584	3,144
07/03	2,681	2,340	2,840	3,751	2,756	1,842	3,644
07/04	2,954	2,664	3,174	4,128	2,998	2,146	3,708
07/05	3,198	3,000	3,381	4,505	3,239	2,527	3,992
07/06	3,392	3,530	3,480	4,854	3,423	2,757	4,308
07/07	3,473	3,916	3,804	5,340	3,695	3,176	
07/08	3,661	4,083	4,206	5,542	3,879	3,355	
07/09	3,910	4,256	4,526	5,811	4,078	3,831	
07/10	4,220	4,502	4,718	5,842	4,275	4,263	
07/11	4,262	4,855	4,942	6,263	4,675	4,394	
07/12	4,398	4,937	5,091	6,977	4,736	4,585	
07/13	4,639	5,193	5,387	7,245	4,889	4,629	
07/14	4,943	5,688	5,714	7,395	5,148	4,675	
07/15	5,137	5,977	6,088	7,769	5,318	4,729	
07/16	5,200	6,124	6,212	8,030	5,488	4,833	
07/17	5,261	6,200	6,336	8,295	5,703	4,860	

**Bethel Test Fishery, Chum Salmon Cumulative CPUE**



# Informational Packet

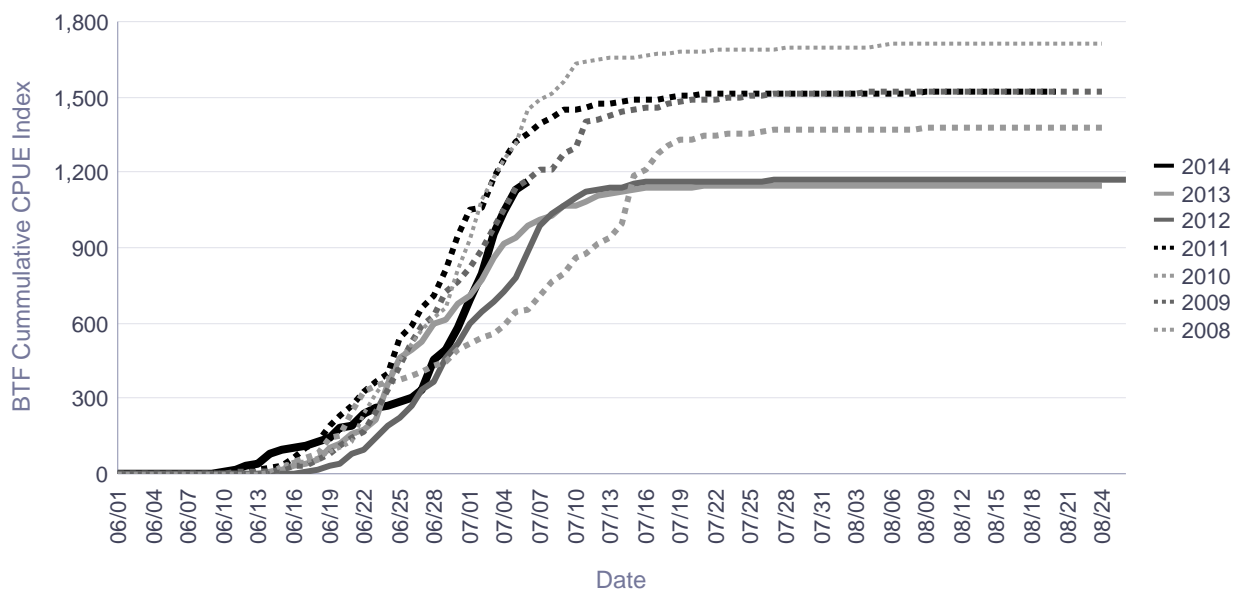
## Sockeye Salmon Cumulative CPUE Index, Bethel Test Fishery

### Bethel Test Fishery Sockeye Salmon Cumulative CPUE Index

**\*\*2014 data are PRELIMINARY and not comparable  
to previous years due to subsistence fishing restrictions. \*\***

Date	CPUE						
	2008	2009	2010	2011	2012	2013	2014
06/28	619	629	428	710	368	601	452
06/29	661	729	446	813	465	614	498
06/30	814	766	491	952	516	674	585
07/01	934	818	515	1,049	596	712	697
07/02	1,093	891	545	1,059	649	773	800
07/03	1,179	978	561	1,181	689	862	954
07/04	1,253	1,048	594	1,253	726	915	1,041
07/05	1,314	1,136	645	1,325	778	937	1,129
07/06	1,452	1,169	654	1,354	883	992	1,160
07/07	1,489	1,208	707	1,397	987	1,011	
07/08	1,511	1,208	765	1,418	1,034	1,025	
07/09	1,560	1,277	794	1,448	1,065	1,064	
07/10	1,636	1,301	857	1,448	1,099	1,069	
07/11	1,639	1,399	877	1,459	1,120	1,087	
07/12	1,649	1,413	913	1,472	1,135	1,109	
07/13	1,653	1,427	941	1,477	1,141	1,119	
07/14	1,655	1,440	994	1,484	1,141	1,121	
07/15	1,660	1,451	1,185	1,492	1,155	1,128	
07/16	1,663	1,460	1,209	1,492	1,160	1,137	
07/17	1,671	1,460	1,275	1,492	1,160	1,139	

**Bethel Test Fishery, Sockeye Salmon Cumulative CPUE**



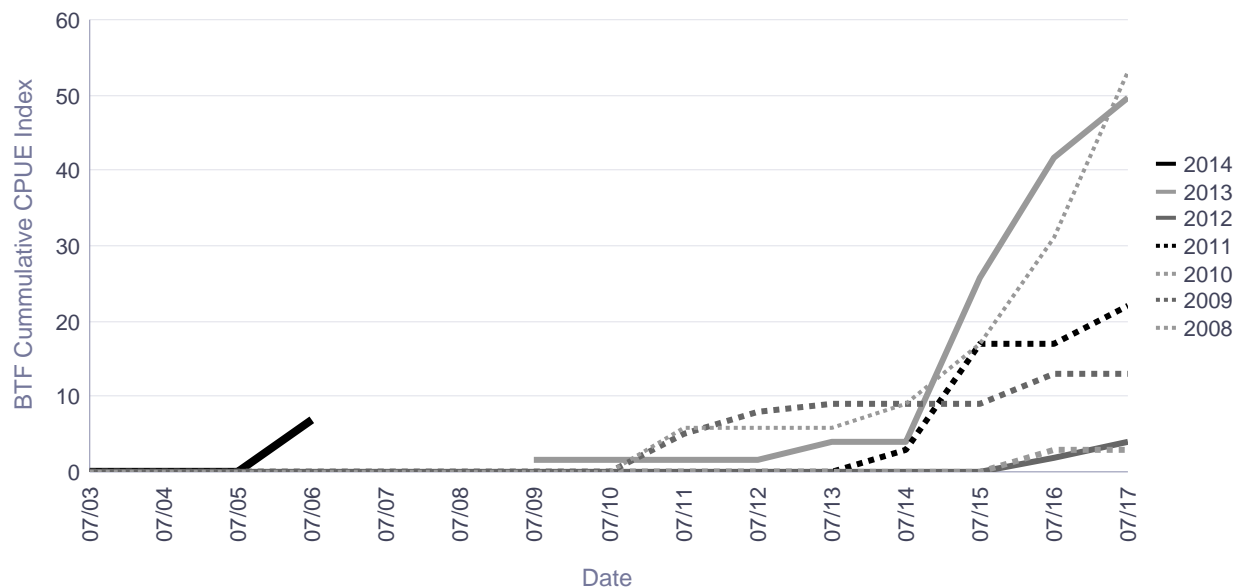
# Informational Packet

## Coho Salmon Cumulative CPUE Index, Bethel Test Fishery

**Bethel Test Fishery  
Coho Salmon Cumulative CPUE Index**

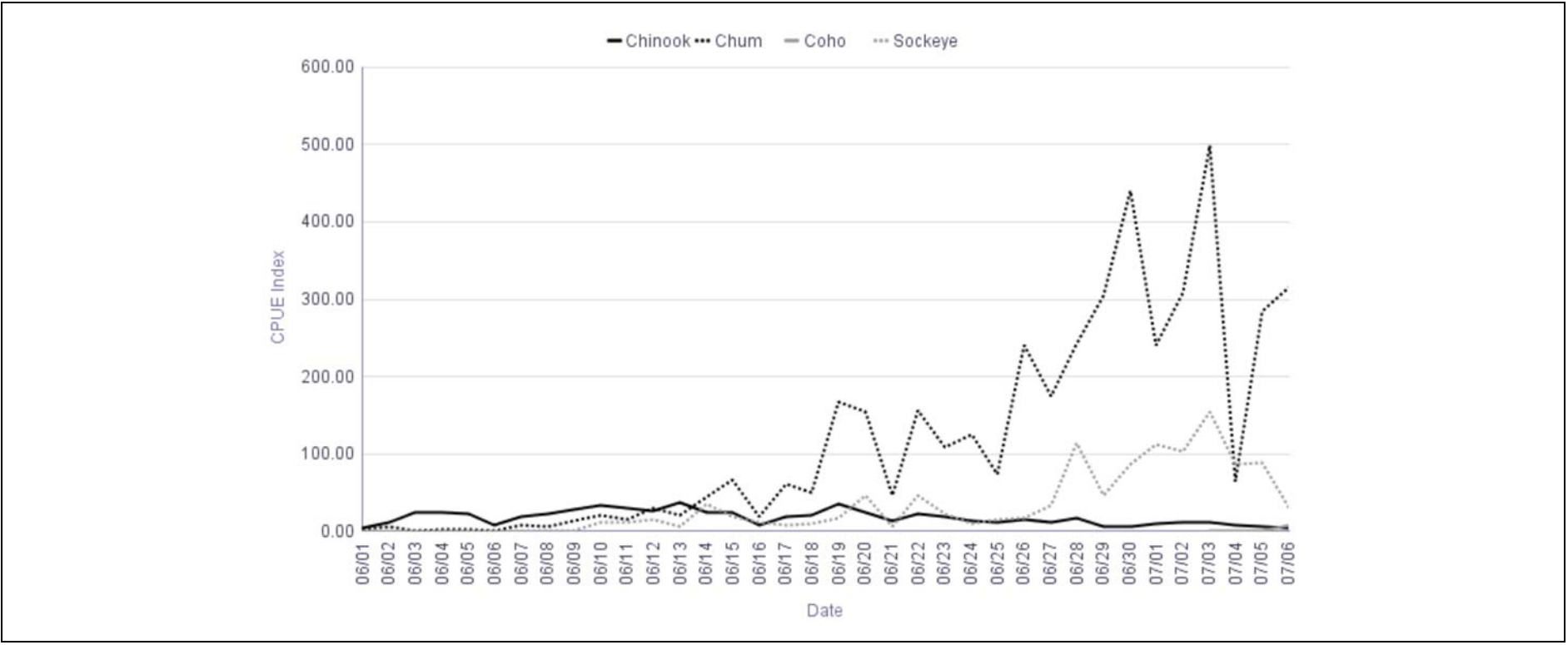
CPUE							
Date	2008	2009	2010	2011	2012	2013	2014
07/03	0	0	0	0	0		0
07/04	0	0	0	0	0		0
07/05	0	0	0	0	0		0
07/06	0	0	0	0	0		7
07/07	0	0	0	0	0		
07/08	0	0	0	0	0		
07/09	0	0	0	0	0	2	
07/10	0	0	0	0	0	2	
07/11	6	5	0	0	0	2	
07/12	6	8	0	0	0	2	
07/13	6	9	0	0	0	4	
07/14	9	9	0	3	0	4	
07/15	17	9	0	17	0	26	
07/16	31	13	3	17	2	42	
07/17	53	13	3	22	4	50	

**Bethel Test Fishery, Coho Salmon Cumulative CPUE**



# Informational Packet

Bethel Test Fishery  
Daily CPUE  
2014  
All Species



# Informational Packet

## Lower River Tagging

year to date	Chinook		Chum	Sockeye	Coho
	Caught	Tagged			
	<b>89</b>	<b>87</b>	<b>44</b>	<b>34</b>	<b>0</b>
6/3	4	4	0	0	0
6/4	1	1	0	0	0
6/5	0	0	0	0	0
6/6	2	1	0	0	0
6/7	Weather Day				
6/8	3	3	0	0	0
6/9	7	6	0	0	0
6/10	1	1	0	0	0
6/11	2	2	0	1	0
6/12	7	7	0	0	0
6/13	2	2	0	0	0
6/14	3	3	0	0	0
6/15	5	5	0	0	0
6/16	6	6	0	0	0
6/17	Day Off				
6/18	5	5	0	0	0
6/19	4	4	2	2	0
6/20	4	4	0	0	0
6/21	2	2	1	0	0
6/22	3	3	2	0	0
6/23	6	6	0	0	0
6/24	Day Off				
6/25	3	3	1	0	0
6/26	2	2	0	1	0
6/27	1	1	2	0	0
6/28	0	0	0	0	0
6/29	1	1	5	1	0
6/30	2	2	1	3	0
7/1	9	9	18	17	0
7/2	1	1	4	0	0
7/3	1	1	3	2	0
7/4	0	0	0	1	0
7/5	0	0	2	2	0
7/6	2	2	3	4	0
7/7	0	0	0	0	0

# Informational Packet

## Kalskag Tagging

year to date	Chinook	Chum	Sockeye	Coho
	Caught	Tagged		
	<b>310</b>	<b>286</b>	<b>835</b>	<b>175</b>
6/3				
6/4				
6/5	4	4	2	0
6/6	1	1	1	0
6/7	4	4	1	0
6/8	1	1	0	0
6/9	3	3	2	0
6/10	3	3	1	0
6/11	3	2	0	0
6/12	4	4	0	0
6/13	Day Off			
6/14	3	3	1	0
6/15	6	6	0	1
6/16	15	15	4	0
6/17	28	27	2	2
6/18	20	18	7	2
6/19	22	22	3	2
6/20	Day Off			
6/21	20	19	2	0
6/22	24	24	14	5
6/23	27	26	46	7
6/24	32	30	75	26
6/25	15	14	56	19
6/26	22	19	75	10
6/27	Day Off			
6/28	15	11	70	10
6/29	7	4	82	4
6/30	2	2	54	8
7/1	9	8	56	9
7/2	9	6	97	40
7/3	5	4	112	21
7/4	Day Off	0	0	0
7/5	6	6	72	9
7/6	0	0	0	0
7/7	0	0	0	0



# Informational Packet

## Kwethluk River Salmon Monitoring Project Cumulative Daily Passage of Chinook Salmon

	Cumulative Daily Passage									
Date	2005	2006	2007	2008	2009	2010	2011	2012	2013	2014
07/04		3,655	296	210	452	135	699			1,262
07/05		4,855	1,152	311	852	292	768			1,387
07/06		6,563	1,652	517	900	360	874			1,578
07/07		<u>7,459</u>	<u>2,255</u>	<u>968</u>	<u>1,269</u>	<u>361</u>	<u>1,014</u>			
07/08		8,264	3,059	1,452	1,286	372	1,061			
07/09		9,393	3,493	1,532	1,470	405	1,351			
07/10		9,887	4,427	1,594	1,740	522	1,436			
07/11		10,242	4,798	1,737	2,217	526	1,652			

Escapement Goal Range: 4,100 to 7,500  
Highlighted years below are when escapement goal was achieved or exceeded.

	2005	2006	2007	2008	2009	2010	2011	2012	2013	2014
Season Total		<u>17,619</u>	<u>12,927</u>	<u>5,276</u>	<u>5,744</u>	1,668	4,079			

There are no comments for the past three days.

## Tuluksak River Salmon Monitoring Project Cumulative Daily Passage of Chinook Salmon

	Cumulative Daily Passage									
Date	2005	2006	2007	2008	2009	2010	2011	2012	2013	2014
07/04	665	90	39	3	3	8	12	8	6	58
07/05	744	125	70	5	6	13	12	15	12	163
07/06	896	156	84	10	15	15	12	76	20	176
07/07	<u>1,018</u>	<u>198</u>	<u>96</u>	<u>21</u>	<u>23</u>	<u>20</u>	<u>12</u>	<u>97</u>	<u>37</u>	
07/08	1,078	209	106	81	23	20	16	117	46	
07/09	1,483	229	112	99	25	39	17	195	55	
07/10	1,592	247	116	140	41	43	17	214	94	
07/11	1,621	287	140	144	64	44	17	229	101	

	2005	2006	2007	2008	2009	2010	2011	2012	2013	2014
Season Total	2,653	1,043	374	701	362	201	284	560	193	

There are no comments for the past three days.

# Informational Packet

## Salmon River (Aniak) Weir Historical Cumulative Daily Passage of Chinook Salmon

	Cumulative Daily Passage									
Date	2005	2006	2007	2008	2009	2010	2011	2012	2013	2014
07/04			49	5					8	251
07/05			55	14					14	347
07/06			61	19					15	456
07/07			<u>152</u>	<u>23</u>					<u>35</u>	
07/08			357	48					78	
07/09			384	57					94	
07/10			453	60					113	
07/11			558	61					158	

	2005	2006	2007	2008	2009	2010	2011	2012	2013	2014
Season Total			6,220	2,376					598	

There are no comments for the past three days.

## George River Weir Historical Cumulative Daily Passage of Chinook Salmon

	Cumulative Daily Passage									
Date	2005	2006	2007	2008	2009	2010	2011	2012	2013	2014
07/04	2,184	1,421	402	93	316	134	400	385	84	368
07/05	2,386	1,621	495	115	626	351	459	535	94	965
07/06	2,478	1,841	945	139	835	457	513	681	96	999
07/07	<u>2,618</u>	<u>2,281</u>	<u>1,409</u>	<u>166</u>	<u>1,256</u>	<u>544</u>	<u>531</u>	<u>848</u>	<u>193</u>	
07/08	2,679	2,340	2,324	216	1,374	593	561	903	247	
07/09	2,781	2,387	2,769	224	1,577	629	615	948	348	
07/10	2,842	2,542	3,037	237	1,693	707	666	1,069	410	
07/11	2,953	2,874	3,220	247	1,945	814	737	1,116	569	

Escapement Goal Range: 1,800 to 3,300  
 Highlighted years below are when escapement goal was achieved or exceeded.

	2005	2006	2007	2008	2009	2010	2011	2012	2013	2014
Season Total	<u>3,845</u>	<u>4,355</u>	<u>4,883</u>	<u>2,698</u>	<u>3,663</u>	1,500	1,571	<u>2,302</u>	1,219	

There are no comments for the past three days.

# Informational Packet

## Kogrukluk River Weir Historical Cumulative Daily Passage of Chinook Salmon

	Cumulative Daily Passage									
Date	2005	2006	2007	2008	2009	2010	2011	2012	2013	2014
07/04	2,252	1,170		14	130	14	74		8	398
07/05	3,327	1,681		19	313	38	87		23	452
07/06	4,303	2,321		37	408	50	97		32	494
07/07	<u>5,522</u>	<u>2,976</u>		<u>56</u>	<u>542</u>	<u>132</u>	<u>103</u>		<u>60</u>	
07/08	6,479	4,016		83	815	282	121		95	
07/09	7,697	4,768		104	1,040	333	171		135	
07/10	9,006	5,616		116	1,242	405	336		196	
07/11	10,013	6,025		167	1,676	682	456		292	

Escapement Goal Range: 4,800 to 8,800  
Highlighted years below are when escapement goal was achieved or exceeded.

	2005	2006	2007	2008	2009	2010	2011	2012	2013	2014
Season Total	<u>21,999</u>	<u>19,414</u>		<u>9,730</u>	<u>9,701</u>	<u>5,693</u>	<u>6,890</u>		1,772	

There are no comments for the past three days.

## Tatlawiksuk River Weir Historical Cumulative Daily Passage of Chinook Salmon

	Cumulative Daily Passage									
Date	2005	2006	2007	2008	2009	2010	2011	2012	2013	2014
07/04	1,098	252	306	23	39	44	134	25	49	1,212
07/05	1,337	299	358	30	225	82	185	31	54	1,245
07/06	1,424	486	404	37	230	116	291	50	62	1,274
07/07	<u>1,564</u>	<u>521</u>	<u>480</u>	<u>46</u>	<u>393</u>	<u>197</u>	<u>328</u>	<u>82</u>	<u>75</u>	
07/08	1,662	599	749	54	462	224	371	96	83	
07/09	1,774	827	1,237	65	543	258	424	456	91	
07/10	1,869	973	1,384	81	576	262	470	533	102	
07/11	2,012	1,019	1,459	120	728	278	497	580	123	

	2005	2006	2007	2008	2009	2010	2011	2012	2013	2014
Season Total	2,920	1,700	2,061	1,071	1,071	569	1,014	1,116	495	

There are no comments for the past three days.

# Informational Packet

## Kwethluk River Salmon Monitoring Project Cumulative Daily Passage of Chum Salmon

	Cumulative Daily Passage									
Date	2005	2006	2007	2008	2009	2010	2011	2012	2013	2014
07/04		6,369	1,160	475	741	2,277	1,493			1,428
07/05		8,428	2,019	1,014	1,170	2,950	1,749			1,804
07/06		10,503	2,825	1,419	1,550	3,416	1,997			2,330
07/07		<u>12,646</u>	<u>4,094</u>	<u>2,351</u>	<u>2,340</u>	<u>3,489</u>	<u>2,328</u>			
07/08		14,065	6,410	3,261	2,600	4,185	2,532			
07/09		17,038	7,945	3,817	3,011	4,342	2,956			
07/10		20,074	9,495	4,062	3,777	5,142	3,287			
07/11		21,339	11,274	4,441	5,965	5,275	3,974			

	2005	2006	2007	2008	2009	2010	2011	2012	2013	2014
Season Total		47,491	54,913	20,030	32,191	19,235	18,329			

There are no comments for the past three days.

## Tuluksak River Salmon Monitoring Project Cumulative Daily Passage of Chum Salmon

	Cumulative Daily Passage									
Date	2005	2006	2007	2008	2009	2010	2011	2012	2013	2014
07/04	1,475	2,443	381	194	35	561	188	296	61	326
07/05	1,802	3,201	628	328	44	995	188	539	139	586
07/06	2,208	3,881	736	496	101	1,501	188	812	313	641
07/07	<u>2,850</u>	<u>4,735</u>	<u>801</u>	<u>754</u>	<u>160</u>	<u>1,697</u>	<u>246</u>	<u>954</u>	<u>453</u>	
07/08	3,688	4,802	993	913	169	1,811	330	1,163	613	
07/09	4,362	5,535	1,208	1,087	176	2,196	421	1,581	739	
07/10	5,838	7,346	1,613	1,353	249	2,441	447	1,937	1,082	
07/11	6,324	7,974	2,748	1,710	460	2,607	594	2,327	1,263	

	2005	2006	2007	2008	2009	2010	2011	2012	2013	2014
Season Total	35,696	25,652	17,286	12,550	13,671	13,042	9,828	16,981	12,911	

There are no comments for the past three days.

# Informational Packet

## Salmon River (Aniak) Weir Historical Cumulative Daily Passage of Chum Salmon

	Cumulative Daily Passage									
Date	2005	2006	2007	2008	2009	2010	2011	2012	2013	2014
07/04			128	53					34	186
07/05			187	105					116	292
07/06			293	164					161	358
07/07			493	212					274	
07/08			736	264					445	
07/09			1,206	387					642	
07/10			1,668	461					975	
07/11			2,082	547					1,309	

	2005	2006	2007	2008	2009	2010	2011	2012	2013	2014
Season Total			25,379	9,459					7,666	

There are no comments for the past three days.

## George River Weir Historical Cumulative Daily Passage of Chum Salmon

	Cumulative Daily Passage									
Date	2005	2006	2007	2008	2009	2010	2011	2012	2013	2014
07/04	2,462	7,353	3,120	2,321	577	2,873	4,684	3,141	2,196	947
07/05	2,812	9,060	4,024	2,827	817	4,214	5,946	4,029	3,039	1,312
07/06	3,252	10,334	5,539	3,386	1,054	4,837	6,931	5,121	3,794	1,456
07/07	3,620	11,293	6,546	4,021	1,219	5,164	7,519	6,628	4,583	
07/08	4,128	11,972	9,557	4,778	1,350	6,100	9,008	7,640	5,922	
07/09	4,558	12,590	11,811	5,352	1,612	7,135	10,031	8,204	7,444	
07/10	5,076	13,890	13,152	6,195	1,867	7,890	11,042	9,303	8,330	
07/11	5,535	15,426	14,061	7,258	2,407	8,638	12,540	10,418	10,026	

	2005	2006	2007	2008	2009	2010	2011	2012	2013	2014
Season Total	14,828	41,467	55,843	29,979	7,941	26,154	44,641	34,336	36,874	

There are no comments for the past three days.

# Informational Packet

## Kogrukluk River Weir Historical Cumulative Daily Passage of Chum Salmon

	Cumulative Daily Passage									
Date	2005	2006	2007	2008	2009	2010	2011	2012	2013	2014
07/04	2,688	15,238	1,049	123	515	513	403		420	1,066
07/05	5,430	22,037	1,369	233	791	1,243	552		746	1,375
07/06	10,566	29,757	1,791	404	971	1,943	806		1,501	1,689
07/07	<u>15,582</u>	<u>36,169</u>	<u>2,545</u>	<u>782</u>	<u>1,241</u>	<u>3,106</u>	<u>1,019</u>		<u>2,079</u>	
07/08	21,840	43,604	3,440	1,232	1,913	4,707	1,444		2,238	
07/09	28,586	49,558	4,748	1,597	2,744	6,617	2,131		3,332	
07/10	34,186	56,695	6,469	1,936	4,044	8,367	3,205		5,498	
07/11	39,185	61,702	8,133	2,387	5,735	10,766	4,423		7,979	

Escapement Goal Range: 15,000 to 49,000  
 Highlighted years below are when escapement goal was achieved or exceeded.

	2005	2006	2007	2008	2009	2010	2011	2012	2013	2014
Season Total	<u>197,723</u>	<u>180,601</u>	<u>49,509</u>	<u>44,978</u>	<u>84,940</u>	<u>63,582</u>	<u>76,386</u>		<u>66,834</u>	

There are no comments for the past three days.

## Tatlawiksuk River Weir Historical Cumulative Daily Passage of Chum Salmon

	Cumulative Daily Passage									
Date	2005	2006	2007	2008	2009	2010	2011	2012	2013	2014
07/04	6,034	6,851	4,709	1,461	276	3,713	3,767	3,323	2,016	1,222
07/05	7,421	7,198	6,144	1,880	770	5,171	5,053	4,467	2,818	1,443
07/06	8,414	8,307	8,042	2,356	849	6,196	7,810	6,254	3,674	1,586
07/07	<u>9,477</u>	<u>9,052</u>	<u>11,183</u>	<u>2,888</u>	<u>1,493</u>	<u>7,228</u>	<u>9,742</u>	<u>8,524</u>	<u>4,237</u>	
07/08	10,916	9,897	14,915	3,363	1,885	8,412	12,253	9,449	4,804	
07/09	12,664	12,038	19,984	4,065	2,300	9,513	16,130	10,831	5,421	
07/10	14,210	13,829	24,018	5,326	2,798	10,500	19,575	12,218	6,117	
07/11	16,951	14,847	27,384	6,566	3,478	11,903	22,549	13,353	7,428	

	2005	2006	2007	2008	2009	2010	2011	2012	2013	2014
Season Total	55,724	32,303	83,246	30,896	19,975	36,702	84,204	44,572	32,277	

There are no comments for the past three days.

# Informational Packet

## Kwethluk River Salmon Monitoring Project Cumulative Daily Passage of Sockeye Salmon

	Cumulative Daily Passage									
Date	2005	2006	2007	2008	2009	2010	2011	2012	2013	2014
07/04		2,913	898	421	1,017	1,271	847			1,128
07/05		3,424	1,414	545	1,288	1,440	907			1,340
07/06		3,867	1,733	647	1,443	1,567	1,008			1,585
07/07		<u>4,145</u>	<u>2,045</u>	<u>844</u>	<u>1,552</u>	<u>1,629</u>	<u>1,100</u>			
07/08		4,356	2,462	1,191	1,741	1,902	1,177			
07/09		4,651	2,689	1,287	2,058	1,950	1,281			
07/10		4,879	3,033	1,345	2,304	2,341	1,314			
07/11		5,027	3,265	1,464	2,682	2,416	1,372			

	2005	2006	2007	2008	2009	2010	2011	2012	2013	2014
Season Total		6,733	5,262	2,451	4,230	4,239	2,031			

There are no comments for the past three days.

## Salmon River (Aniak) Weir Historical Cumulative Daily Passage of Sockeye Salmon

	Cumulative Daily Passage									
Date	2005	2006	2007	2008	2009	2010	2011	2012	2013	2014
07/04			0	0					0	0
07/05			0	0					0	0
07/06			0	0					0	0
07/07			<u>0</u>	<u>0</u>					<u>0</u>	
07/08			0	0					0	
07/09			0	0					2	
07/10			0	0					2	
07/11			0	0					5	

	2005	2006	2007	2008	2009	2010	2011	2012	2013	2014
Season Total			2,130	1,181					966	

There are no comments for the past three days.

# Informational Packet

## Kogrukluk River Weir Historical Cumulative Daily Passage of Sockeye Salmon

	Cumulative Daily Passage									
Date	2005	2006	2007	2008	2009	2010	2011	2012	2013	2014
07/04	333	2,168	25	2	34	1	10		18	24
07/05	1,152	3,010	39	7	72	6	20		54	39
07/06	2,604	4,351	45	7	130	12	21		69	40
07/07	<u>4,311</u>	<u>5,446</u>	<u>76</u>	<u>9</u>	<u>200</u>	<u>58</u>	<u>23</u>		<u>79</u>	
07/08	6,966	6,920	161	43	312	239	32		162	
07/09	8,482	9,179	312	65	632	307	69		284	
07/10	10,545	11,302	509	87	1,131	385	252		568	
07/11	12,076	12,646	781	137	2,116	739	356		898	

Escapement Goal Range: 4,400 to 17,000  
 Highlighted years below are when escapement goal was achieved or exceeded.

	2005	2006	2007	2008	2009	2010	2011	2012	2013	2014
Season Total	<u>37,939</u>	<u>60,807</u>	<u>16,526</u>	<u>19,675</u>	<u>23,785</u>	<u>13,997</u>	8,135		7,882	

There are no comments for the past three days.

## Telaquana River Weir Historical Cumulative Daily Passage of Sockeye Salmon

	Cumulative Daily Passage				
Date	2010	2011	2012	2013	2014
07/04	0			0	0
07/05	0		0	0	0
07/06	59		0	0	1
07/07	<u>302</u>		<u>0</u>	<u>1</u>	
07/08	629		0	928	
07/09	1,920		0	3,921	
07/10	3,937	910	0	6,135	
07/11	5,983	3,340	0	9,584	

	2010	2011	2012	2013	2014
Season Total	72,020	35,105	22,994	27,806	

There are no comments for the past three days.



# Informational Packet

Grant Fairbanks  
P. O. Box 370  
Bethel, Alaska 99559  
May 13, 2014

Chairman Karl Johnstone  
Alaska Board of Fisheries  
Alaska Department of Fish and Game  
Boards Support Section  
P.O. Box 115526  
Juneau, AK 99811---5526

Dear Chairman Johnstone:

I am writing to you as a long-time resident on the Kuskokwim River, having lived many years in Bethel as well as having homesteaded on the Holitna River, a major tributary in the Upper Kuskokwim. The Alaska Board of Fish (BOF) is guided by statute to provide subsistence fishing opportunities among all qualified residents. Sometimes, however, the surplus available for harvest is less than the Amounts Necessary for Subsistence (ANS) - as formally established by the BOF -- and the essential subsistence needs of all qualified subsistence harvesters needs cannot be met.

AS 16.05.258, referred to as "Tier II", is an allocation system that is triggered when there is insufficient harvestable surplus to satisfy all subsistence needs. This system also distinguishes and identifies those individuals most dependent on a particular fish stock or wildlife population among all subsistence users. Tier II gives priority to users based on: 1) customary dependence, 2) proximity to the stock or population and 3) availability of alternative resources.

**AS 16.05.258. - Subsistence Use and Allocation of Fish and Game states:**

- (4)** if the harvestable portion of the stock or population is not sufficient to provide a reasonable opportunity for subsistence uses, the appropriate board shall
- (A)** adopt regulations eliminating consumptive uses, other than subsistence uses;
  - (B)** distinguish among subsistence users, through limitations based on
    - (i)** the customary and direct dependence on the fish stock or game population by the subsistence user for human consumption as a mainstay of livelihood;
    - (ii)** the proximity of the domicile of the subsistence user to the stock or population; and
    - (iii)** the ability of the subsistence user to obtain food if subsistence use is restricted or eliminated.

## Informational Packet

The purpose of this letter is to request the Alaska Board of Fisheries (BOF) to develop and apply a Tier II system to the subsistence harvest of Chinook salmon in the Kuskokwim River Drainage. I request that this is done in as rapid and equitable manner as possible, based on the criteria stated in Alaska Statue **AS 16.05.258**.

I further ask that the BOF re-evaluate the ANS determination for Chinook salmon within the Kuskokwim River drainage and apportion the ANS to segments within the river to ensure a fair and equitable allocation of available surpluses.

Because of the importance of Chinook Salmon harvest to the subsistence economy of users in the watershed, I am requesting expedited consideration of this petition for Tier II designation by the AK BOF as provided by the Subsistence Proposal Policy in **5AAC 96.615**.

The rationale for this request is based on the following evidence and factors:

- 1) The Kuskokwim River Chinook salmon populations are currently severely depressed. The current “Amounts Necessary for Subsistence “ as established in regulation by the Alaska Board of Fisheries is: **64,500 to 83,000**. Due to the declines in the abundance of Chinook salmon, subsistence harvests have fallen below the amount necessary for subsistence for each of the last three years: 2011-13 (see Figure 1 below). (This decline is confirmed by the March 19, 2014 letter to the AK BOF from ADFG AYK Region III Regional Supervisor Re. Petition to allow dip nets). Although 2013 subsistence harvests were higher than those in 2012, this does not indicate an increase in total run size. Despite the direction provided by the BOF’s Sustainable Salmon Policy, management actions allowed significant harvest opportunity in 2013. This resulted in the lowest recorded escapements at all monitoring sites and the drainage-wide escapement goal not being met. If escapement goals for 2013 were met, the subsistence harvest would have been much lower.

# Informational Packet

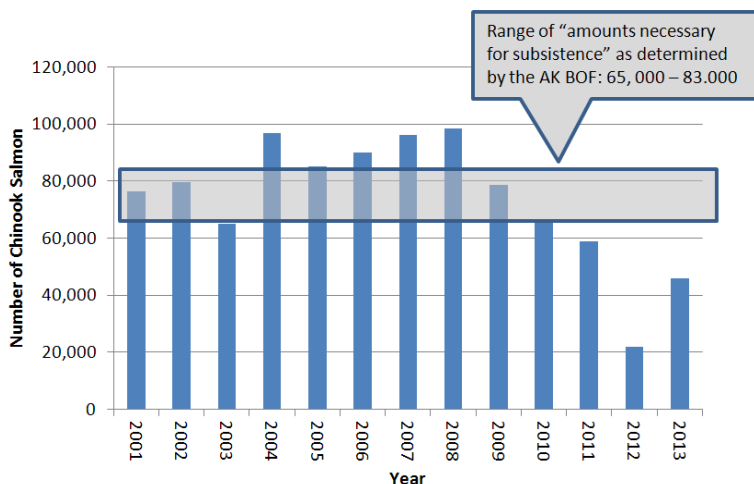


Figure 1. Kuskokwim Chinook Salmon Subsistence Harvests 2001-2013, showing range of “Amounts necessary for subsistence” as established by the Alaska Board of Fisheries.

2) The Kuskokwim River Chinook salmon populations are in a sustained multiyear decline. The 2014 Kuskokwim River Chinook salmon forecast, as provided by the ADFG in-season manager, calls for a very poor run, similar to the 2013 run: 94,000 king salmon (range 71,000-117,000). In 2013, all seven Kuskokwim River weir escapement projects recorded their lowest escapements on record. Based on the recent depressed runs, plus a projected low run for 2014, the ADFG is considering a very conservative king salmon harvesting schedule with extensive restrictions. The Kuskokwim Salmon Management Working Group, at their April 3-4, 2014 meeting supported this approach, voting to support an unprecedented 40 day closure beginning at the front of the run in order to try to achieve current drainage-wide escapement goals. With very little or no harvest opportunity anticipated and in order to protect spawning escapements essential to rebuild the run, it is highly likely that 2014 will be the fourth year in a row of not meeting ANS.

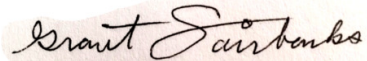
3) When the harvestable portion of a stock reaches Tier II status, wherein the “harvestable portion of the stock or population is not sufficient to provide a reasonable opportunity for subsistence uses,” the statutory language states that the appropriate board **shall** take the actions specified. I understand that one-time or short-term shortages may not warrant an immediate Tier II designation. However, the Kuskokwim King Salmon stock has now experienced three consecutive years of harvests below ANS, with a fourth year highly likely. There is no reasonable biological evidence that this situation will change any time soon.

4) Despite the sustained decline of the Kuskokwim king salmon stocks, there has not been a fair or equitable allocation of harvesting opportunity among users across the watershed. A review of harvest data will show that harvesters in the upper portions of the watershed have had significantly less harvesting opportunities during periods of severe restrictions compared to harvesters in the lower portion of the watershed. This is the rationale for my request that the Board re-evaluate the ANS determination for Chinook salmon within the Kuskokwim River drainage. The ANS amount should be allocated to segments within the river to ensure a fair and equitable distribution of available surpluses.

# Informational Packet

5) At its April 17, 2014 meeting, the Federal Subsistence Board unanimously approved a special action request from the Napaskiak Traditional Council that would limit harvesting surplus Chinook salmon to federally qualified subsistence users within the boundary of the Yukon Delta NWR. In light of this federal action, BOF approval of a Tier II allocation system for the Kuskokwim would provide additional benefits including: 1) providing upriver users outside of the Yukon Delta NWR with an appropriate allocation system and; 2) potential application to the entire watershed, providing more unified management of subsistence Chinook salmon harvest.

Sincerely,



Grant Fairbanks

CC. Jeff Regnart, Director, Commercial Fisheries Division, ADFG  
Tim Towarak, Chair, Federal Subsistence Board  
Kuskokwim Salmon Management Working Group Co-Chairs