

**Division of Commercial Fisheries**  
**Sam Rabung, Director**

Homer Area Office  
3298 Douglas Place  
Homer, AK 99603



**Alaska Department of Fish and Game**  
**Doug Vincent-Lang, Commissioner**

PO Box 115526  
Juneau, AK 99811-5526  
[www.adfg.alaska.gov](http://www.adfg.alaska.gov)

## **Advisory Announcement**

*For Immediate Release: February 28, 2022*

**CONTACT: Jan Rumble and Elisa Russ**  
**Groundfish Area Management Biologists**  
**(907) 235-8191**

### **Prince William Sound Area Commercial Shrimp Pot Fishery Guideline Harvest Level, Registration Deadline, Season Opening Date, and Survey Results Emergency Order # 2-SF-E-03-22**

The Prince William Sound Area (PWS) commercial shrimp pot fishing season will open at 8:00 a.m. April 15, 2022 with a guideline harvest level (GHL) of 66,900 lb. The fishery will open only in waters designated as Area 1, as shown on the map in Figure 1.

All participants must possess a 2022 P09E or P91E interim use permit available from the Commercial Fisheries Entry Commission (CFEC) and a vessel registration for the PWS shrimp pot fishery. CFEC permit forms are available at [http://www.cfec.state.ak.us/forms/Commercial\\_Fishing\\_Permit\\_Application.pdf](http://www.cfec.state.ak.us/forms/Commercial_Fishing_Permit_Application.pdf) or paper forms at Alaska Department of Fish and Game (ADF&G) offices.

Due to the COVID-19 pandemic, ADF&G encourages the public to ask questions by phone (Jan Rumble at 907-321-1569 or Homer office at 907-235-8191) and to complete vessel registrations by phone, e-mail/fax, or in person during regular business hours. Registrations are available in ADF&G offices in Homer, Cordova, Anchorage, and Soldotna.

**The registration deadline for the PWS shrimp pot fishery is 5:00 p.m. April 1.** The number of shrimp pots that may be operated from a vessel registered for the fishery will be announced in early April.

ADF&G conducts an annual longline pot survey on spot shrimp in PWS. The results from this survey along with the fishery performance from the commercial and noncommercial fisheries are used in a surplus production model to determine the annual total allowable harvest (TAH). This TAH level must exceed 110,000 lb for a commercial fishery to be prosecuted, which has occurred for the past 13 years, following the adoption of the management plan and reopening of the commercial fishery. The figures in this document indicate the survey location (Figure 2), the average total weight of spot shrimp per pot or catch per unit effort (CPUE) for all sizes of shrimp, CPUE of shrimp with a carapace length of 32 mm or greater for all areas surveyed (Figure 3), and the CPUE for both of these groups for the three different management areas (1, 2, and 3; Figure 4). Survey results indicate a healthy shrimp population with good recruitment. Please contact Jan Rumble (907-321-1569) with questions.

Fishery management and other pertinent regulations are found in Chapters 31 and 39 of the **2020-2021 Statewide Commercial Shrimp, Dungeness Crab, and Miscellaneous Shellfish** book, available online at <http://www.adfg.alaska.gov/index.cfm?adfg=fishregulations.commercial> or at ADF&G offices. Fishery participants should thoroughly review the regulatory requirements for this fishery.

**ADF&G will be holding an in-person preseason meeting at 12:00 noon to 1:00 p.m. on Sunday, March 27 during the Board of Fisheries meeting at the Egan Civic and Convention Center.** Staff will discuss season plans, fishery requirements, survey results, log sheets, and answer questions about the upcoming season.

### ***COVID-19***

Under Alaska's Health Mandates 1, 2, 3, and 4, commercial fishing is Essential and is part of Alaska's Essential Services and Critical Infrastructure. Commercial fishers should ensure that all travel and other activities in support of commercial fishing operations follow protocols in Alaska COVID-19 Health Advisories. COVID-19 Health Orders may be found here: <https://covid19.alaska.gov/health-order/>.

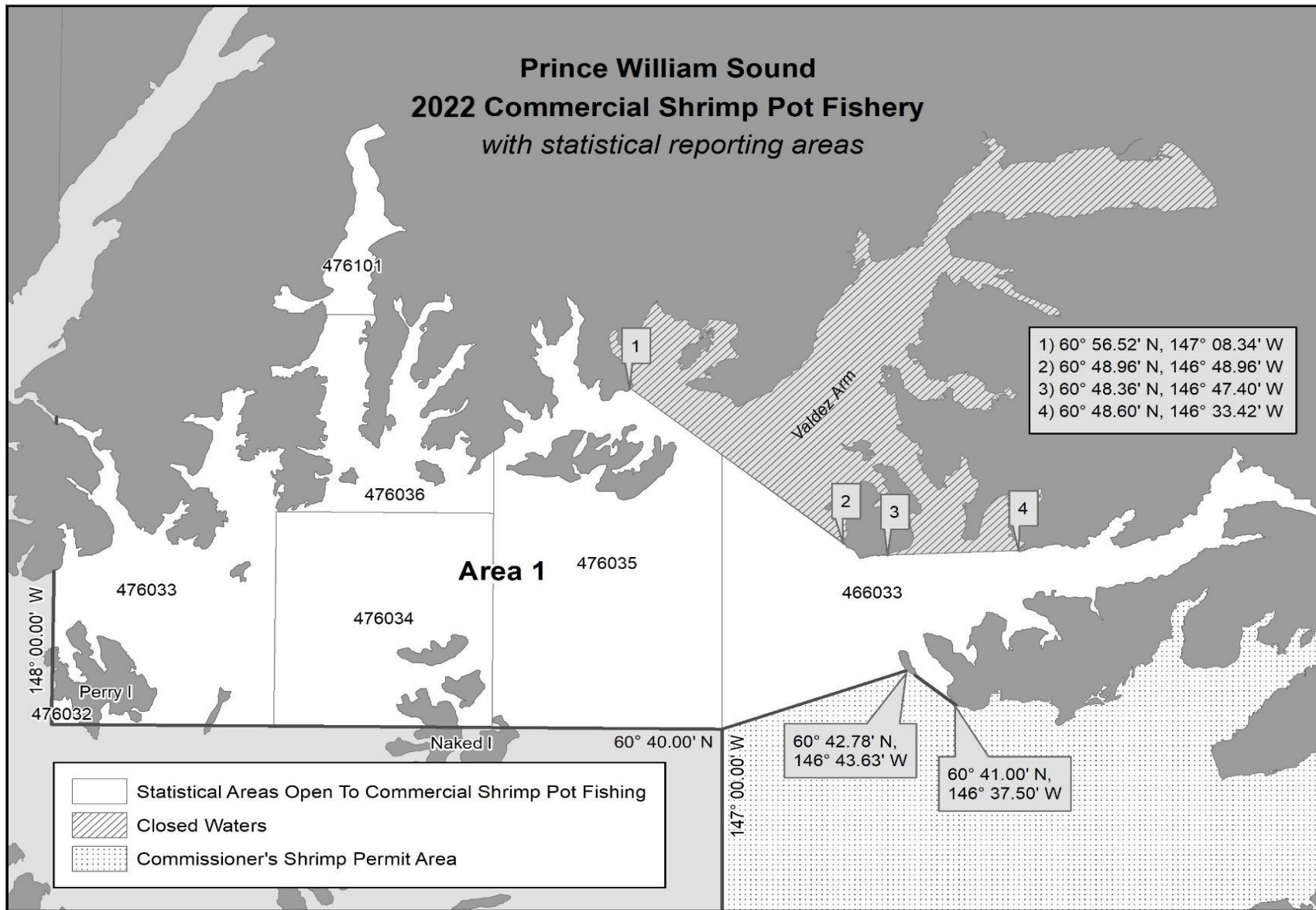


Figure 1.—The 2022 Prince William Sound Area shrimp pot fishery will open in Area 1.

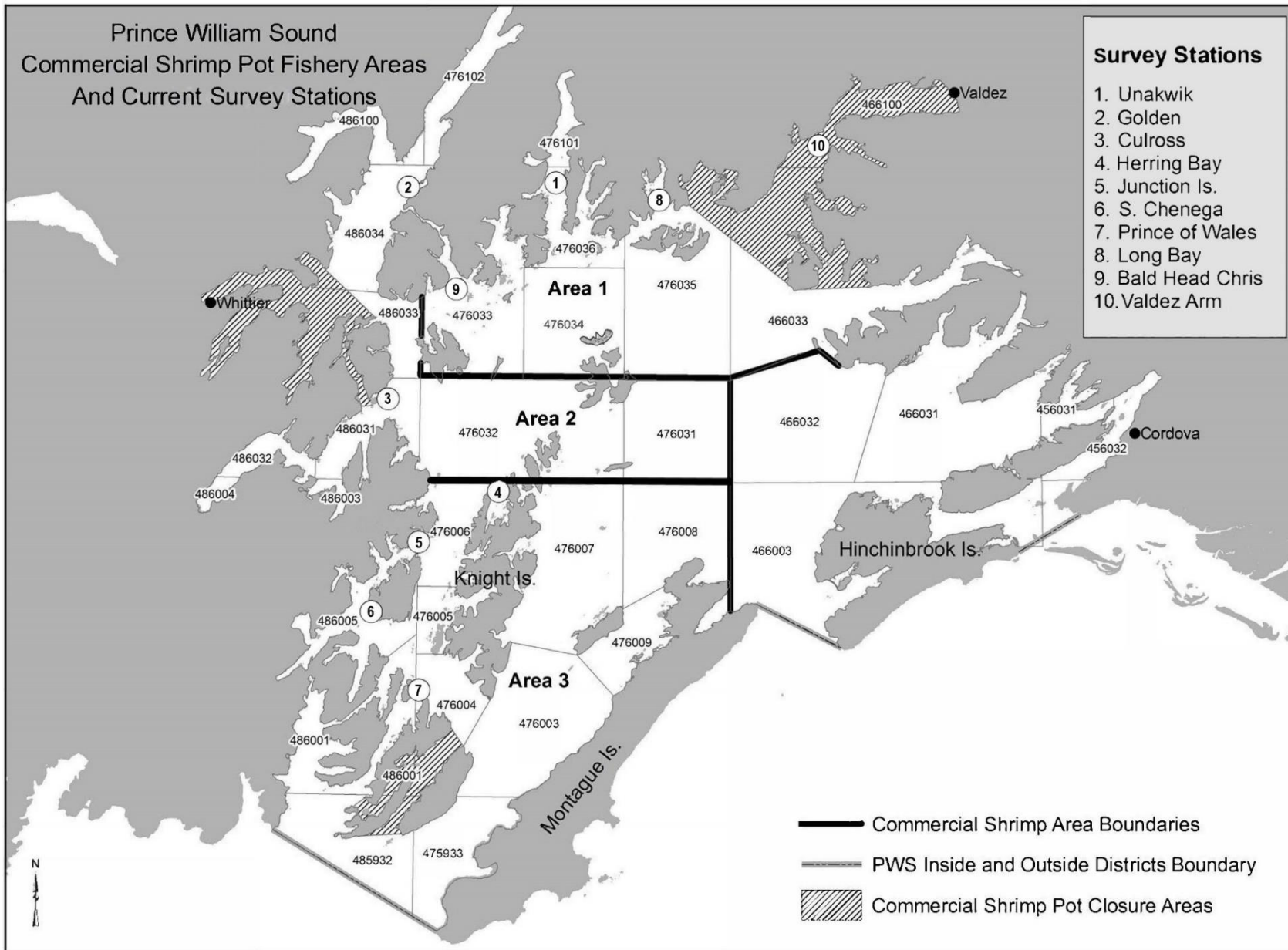


Figure 2.— Shrimp pot survey sites and three commercial management areas in Prince William Sound.

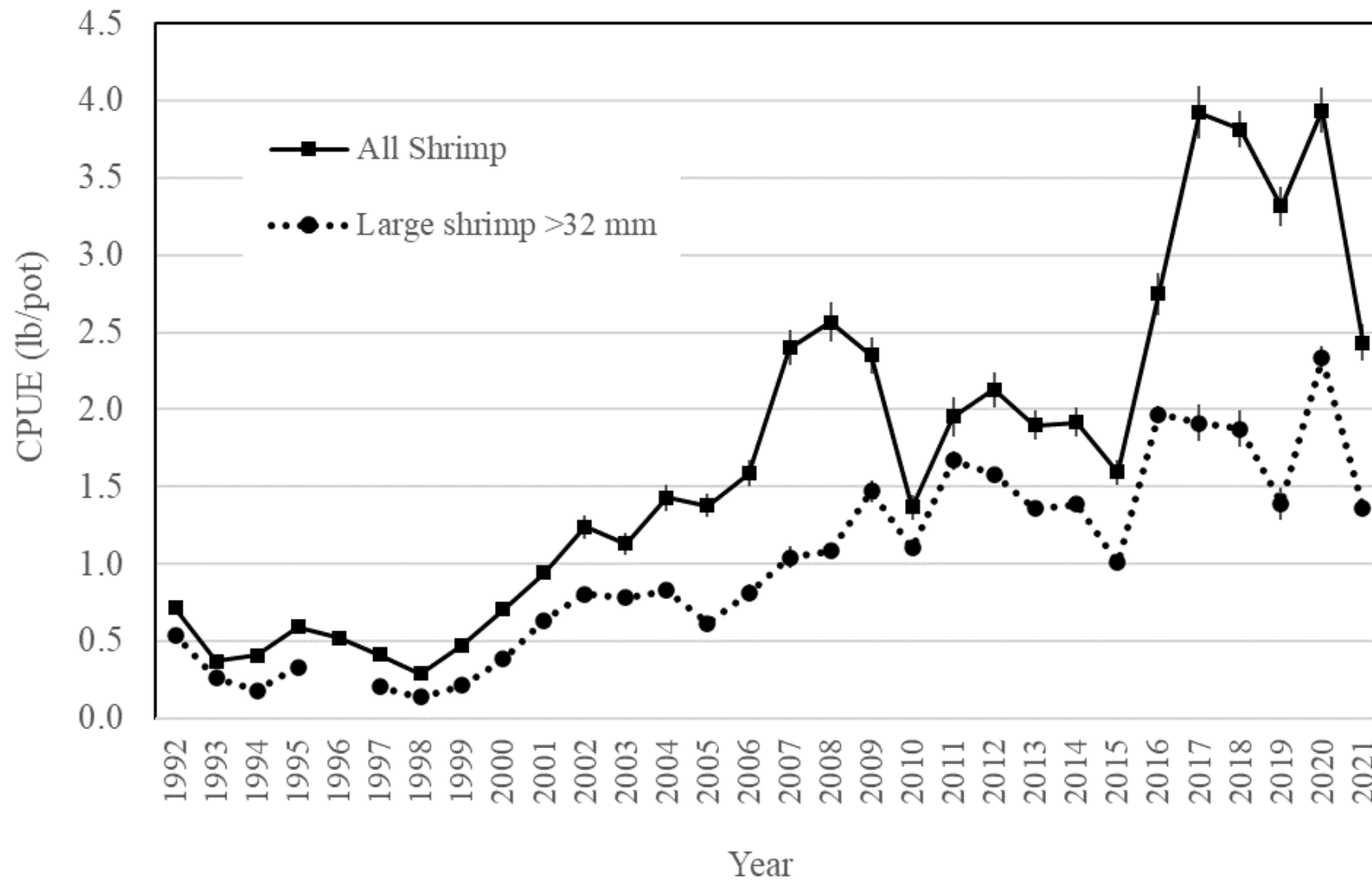


Figure 3.—Prince William Sound spot shrimp survey average catch per unit effort (CPUE) for all spot shrimp and large spot shrimp (equal to or greater than 32 mm in carapace length), 1992–2021.

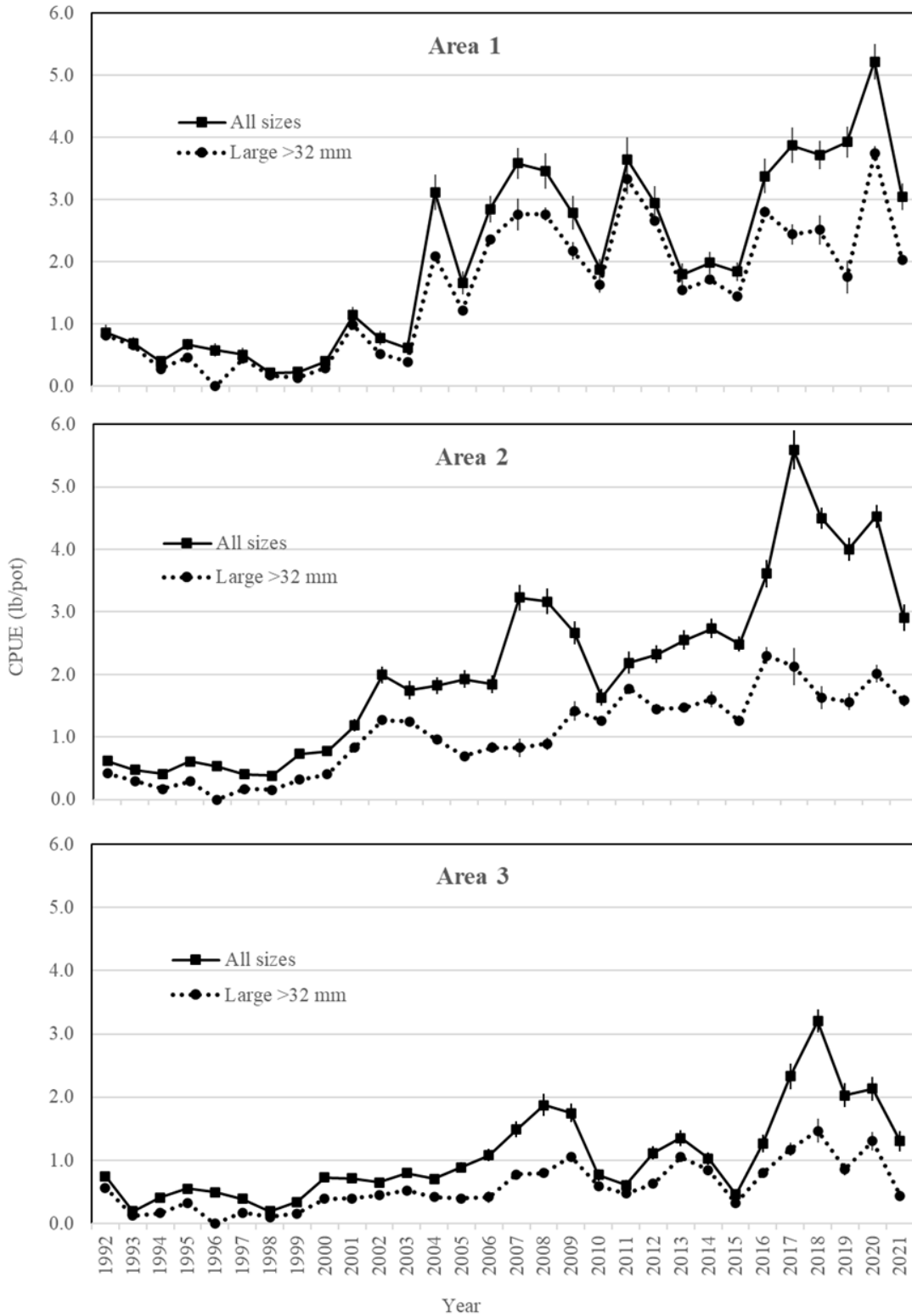


Figure 4.—Prince William Sound spot shrimp survey average catch per unit effort (CPUE) for all spot shrimp and large shrimp (>32 mm carapace length) in three management areas 1, 2, and 3, 1992-2021.