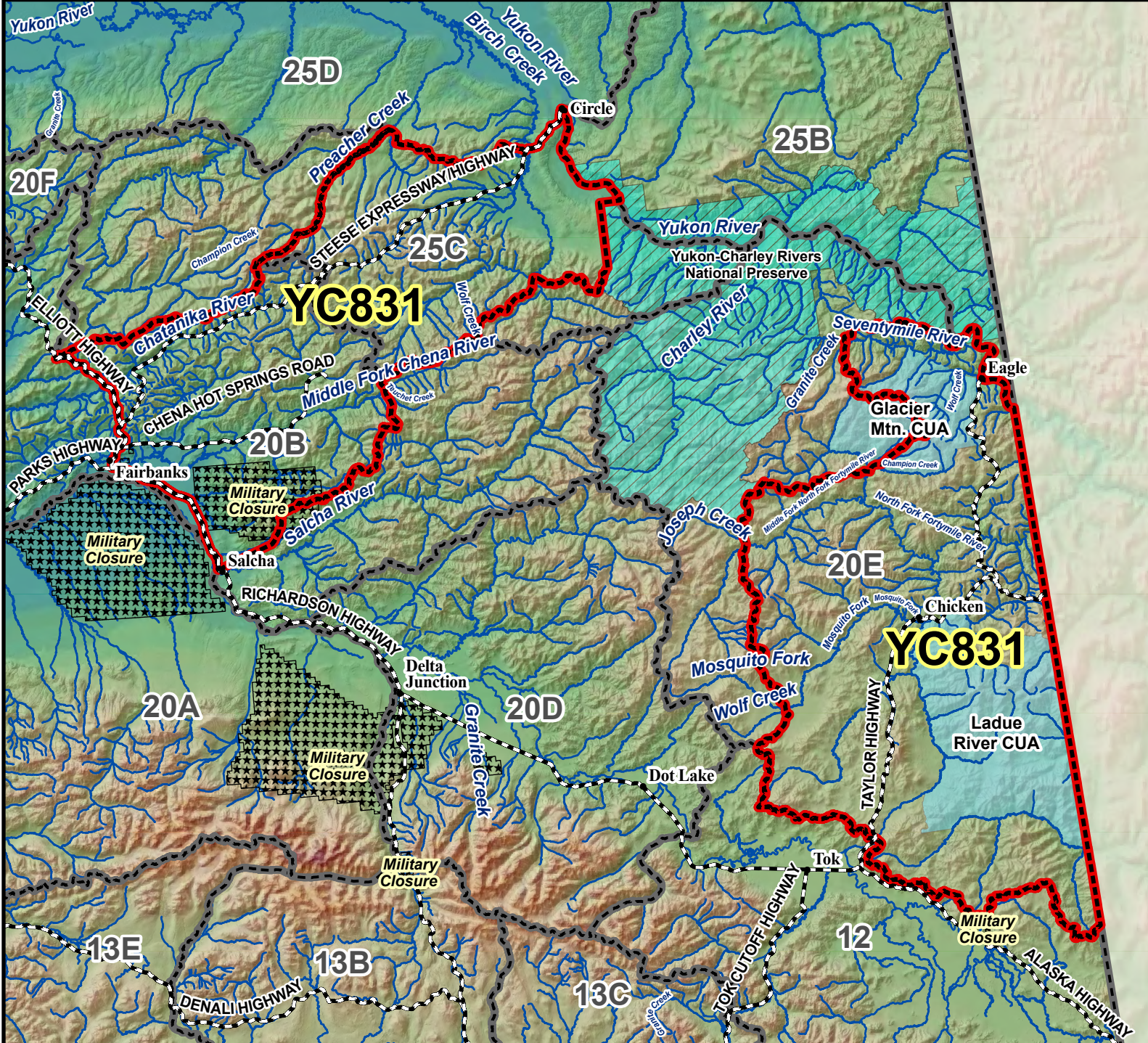


# YC831 Caribou Youth Permit Hunt

This map is intended for hunt planning use, not for determining legal property or regulatory boundaries. Content is compiled from various sources and is subject to change without notice. See current hunting regulations for written descriptions of boundaries. Hunters are responsible for knowing the land ownership and regulations of the areas they intend to hunt.



**AREA DESCRIPTION:** Unit 20B, within the Chatanika River drainage north and east of the Steese Highway, and that portion south and east of the Steese Highway, except the Middle (East) Fork of the Chena River drainage upstream from and including the Teuchet Creek drainage and except the Salcha River drainage; Unit 20E, that portion including the Seventymile River downstream from the Granite Creek drainage, the North Fork Fortymile River drainage downstream from and including the Champion Creek drainage, the Middle Fork Fortymile River drainage downstream from the Joseph Creek drainage, the Mosquito Fork of the Fortymile River drainage downstream from the Wolf Creek drainage, the Dennison Fork drainages, the Ladue River drainages, and all drainages east of those drainages; and Unit 25C, that portion east of the east bank of the mainstem of Preacher Creek to its confluence with American Creek, then east of the east bank of American Creek, excluding that portion within the drainage of the south fork of Birch Creek and excluding that portion within the Yukon-Charley Rivers National Preserve.

