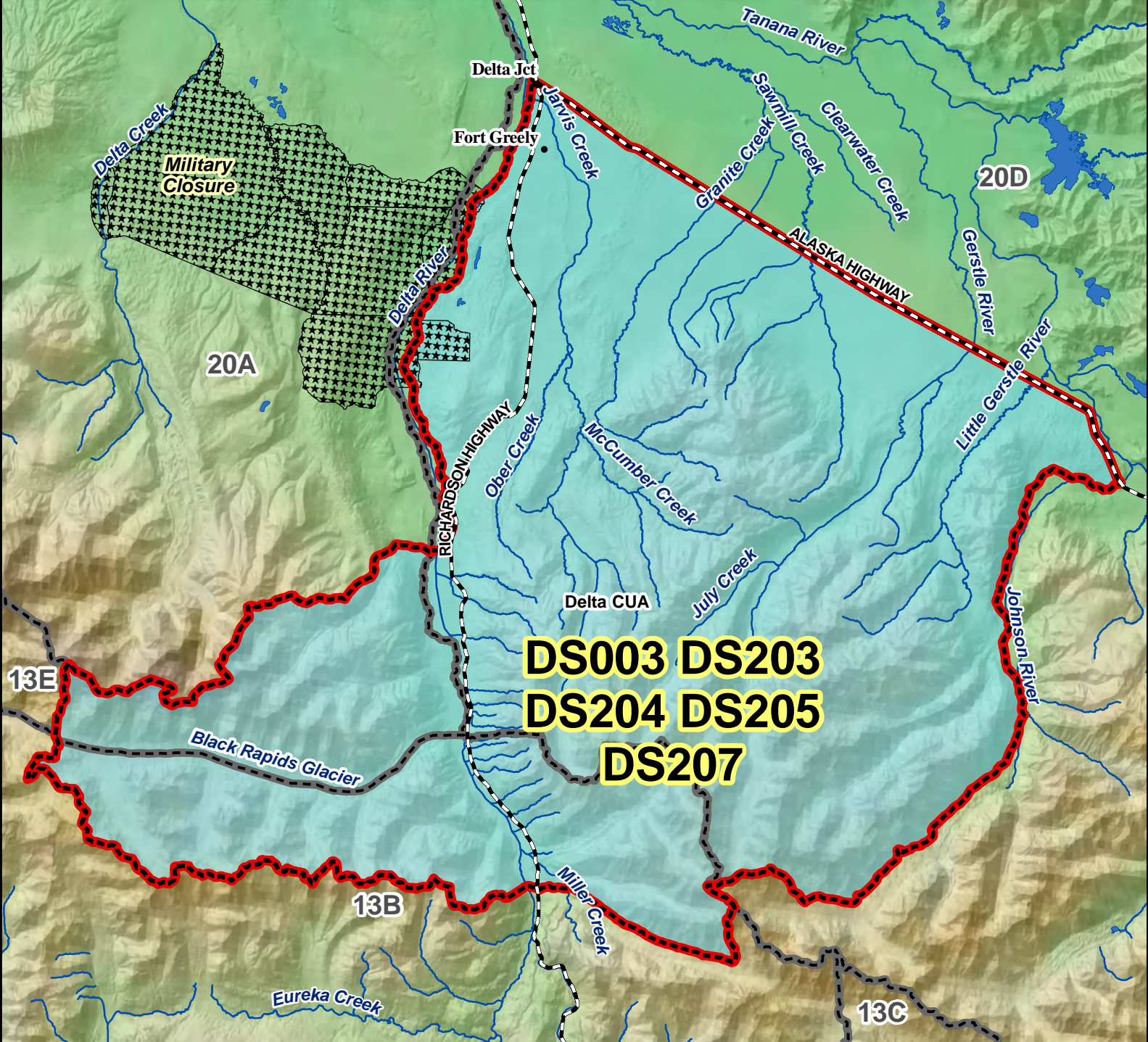
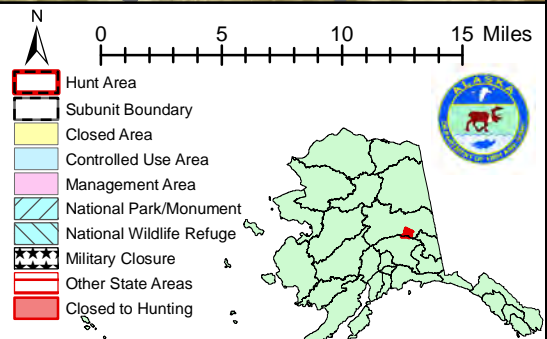


DS003 DS203 DS204 DS205 DS207 Sheep Drawing Permit Hunt

This map is intended for hunt planning use, not for determining legal property or regulatory boundaries. Content is compiled from various sources and is subject to change without notice. See current hunting regulations for written descriptions of boundaries. Hunters are responsible for knowing the land ownership and regulations of the areas they intend to hunt.



AREA DESCRIPTION: Units 13B, 20A and 20D, those portions beginning at the confluence of Miller Creek and the Delta River then west to Vertical Angle Bench Mark (VABM) Miller, then west to include all drainages of Augustana Creek and Black Rapids Glacier, then north and east to include all drainages of McGinnis Creek to its confluence with the Delta River, then east in a straight line across the Delta River to the east bank of the Delta River, then north along the east bank to a point opposite the intersection of the Alaska and Richardson hwy's, then east in a straight line to the intersection of the Alaska and Richardson hwy's, then east along the Alaska Hwy to the west bank of the Johnson River, then south along the west bank of the Johnson River and Johnson Glacier to the head of the Canwell Glacier, then west along the north bank of the Canwell Glacier and Miller Creek to the Delta River.



Please refer to the Alaska Hunting Regulations booklet for bag type, seasons, and additional regulations concerning this hunt.