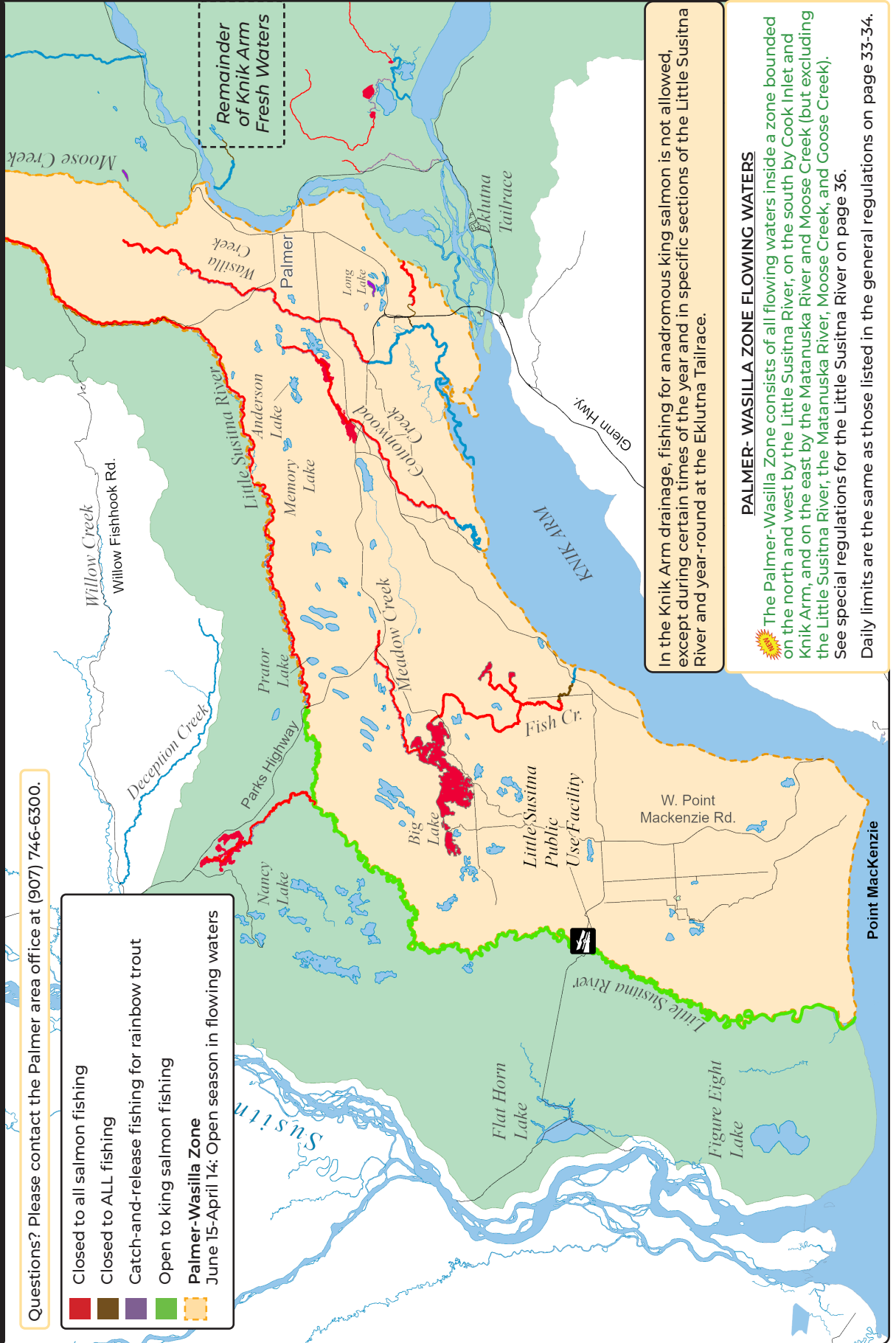


PALMER-WASILLA ZONE FLOWING WATERS



Questions? Please contact the Palmer area office at (907) 746-6300.

- Closed to all salmon fishing
- Closed to ALL fishing
- Catch-and-release fishing for rainbow trout
- Open to king salmon fishing
- Palmer-Wasilla Zone
June 15-April 14: Open season in flowing waters

In the Knik Arm drainage, fishing for anadromous king salmon is not allowed, except during certain times of the year and in specific sections of the Little Susitna River and year-round at the Eklutna Tailrace.

PALMER-WASILLA ZONE FLOWING WATERS

The Palmer-Wasilla Zone consists of all flowing waters inside a zone bounded on the north and west by the Little Susitna River, on the south by Cook Inlet and Knik Arm, and on the east by the Matanuska River and Moose Creek (but excluding the Little Susitna River, the Matanuska River, Moose Creek, and Goose Creek). See special regulations for the Little Susitna River on page 36.

Daily limits are the same as those listed in the general regulations on page 33-34.

GENERAL REGULATIONS - KNIK ARM

Inclusive waters: Bounded on the north by (but not including) Willow Creek Drainage, on the west by a line ½ mile east of the Susitna River, on the south by Cook Inlet and Knik Arm, and on the east by the Upper Susitna River drainage upstream of its confluence with the Oshetna River and includes all waters within the Matanuska and Knik River drainages.

Fishing is open year-round for all species unless otherwise noted below or in special regulations.

Check for emergency orders online at www.adfg.alaska.gov/sf/EONR prior to fishing.

KING SALMON

- **Please check emergency orders for king salmon closures or contact the local ADF&G office for more info.**
- The fresh waters of the Knik Arm are **closed to king salmon fishing**, except the Little Susitna drainage and Eklutna Tailrace, see special regulations.
- **In stocked lakes:** 10 per day, 10 in possession, in combination with other salmon. See pages 86-87.
- **In Knik Arm waters open to king salmon fishing:**
 - There is a combined annual limit of 5 king salmon 20 inches or longer from the waters of the following areas: Cook Inlet Salt Waters, West Cook Inlet, Susitna River Drainage, Knik Arm, Anchorage Bowl, and Kenai Peninsula.
 - A king salmon 20 inches or longer that is removed from the water must be retained and becomes part of the bag limit of the person who originally hooked the fish. You must not remove a king salmon 20 inches or longer from the water before releasing it.
 - If you retain a king salmon 20 inches or longer, you must immediately record that harvest. See page 5 for recording instructions.

OTHER SALMON

- **In stocked lakes:**
 - 10 per day, 10 in possession in combination with king salmon. See pages 86-87 for a list of stocked lakes.
- **In other lakes, ponds, and in all flowing waters:**
 - 16 inches or longer: 3 per day, 3 in possession, only 2 per day, 2 in possession may be coho salmon.
 - A coho (silver) salmon 16 inches or longer that is removed from the water must be retained and becomes part of the bag limit of the person who originally hooked the fish. You must not remove a coho salmon 16 inches or longer from the water before releasing it. Special provisions may apply to each stream.
 - Less than 16 inches: 10 per day, 10 in possession in combination.

ARCTIC GRAYLING

- **In stocked lakes:** 5 per day, 5 in possession. See pages 86-87.
- **In other lakes, ponds, and in all flowing waters:** 2 per day, 2 in possession.

LAKE TROUT

- 2 per day, 2 in possession.

OTHER FINFISH

- No limit.

RAINBOW/STEELHEAD TROUT

- **In stocked lakes:**
 - 5 per day, 5 in possession, only 1 fish may be 20 inches or longer. See pages 86-87.
 - There is an annual limit of 10 rainbow/steelhead trout 20 inches or longer from stocked lakes.
- **In other lakes and ponds and in all flowing waters:**
 - 2 per day, 2 in possession, only 1 fish may be 20 inches or longer.
 - There is a total annual limit of 2 rainbow/steelhead trout 20 inches or longer taken north of the latitude of Point Adam, from the waters of the following areas: West Cook Inlet, Susitna River Drainage, Knik Arm, Anchorage Bowl, Kenai Lake drainages, Kenai River tributaries, and Kenai Peninsula.
 - If you retain a rainbow/steelhead trout 20 inches or longer, you must immediately record that harvest. See page 5 for recording instructions.



In flowing waters north and west of the Little Susitna River:

- **April 15-June 14: Catch-and-release fishing only. All rainbow trout caught must be released immediately.**

NORTHERN PIKE

- No limit.
- **Live Release Prohibited.** You are not allowed to release live pike back into the water. Pike not retained for personal use may be disposed of through lawful and safe methods, including returning dead pike to the water.
- Northern pike may be taken by spear, sport fishing gear, ice fishing gear, or by bow and arrow (the arrow must be attached to the bow with a line and the arrow must have a barbed tip).
- When fishing through the ice for northern pike, you may use two hooks on a single line, provided that both hooks are attached to one single piece of bait.

The following special rules apply to ice fishing for northern pike in the waters listed below:

- Sport fishing through the ice for northern pike is allowed using 5 lines provided that:
 - Standard ice fishing gear is used;
 - The fishing gear is closely attended, and;
 - All other species of fish caught are released immediately.



- **Anna Lake**
- **Beaverhouse Lake**
- **Cow Lake**
- **East Papoose Lake**
- **Figure Eight Area Lakes**
- **Fish Creek (Lower Susitna River)**
- **Flathorn Lake**
- **Gerry Lake**
- **Horseshoe Lake**
- **Hourglass Lake**
- **Loonsong Lake**
- **Lynda Lake**
- **Memory Lake**
- **Nancy Lake Rec Area (except Nancy Lake)**
- **Prator Lake**
- **Sevenmile Lake**
- **Stephan Lake**
- **West Beaver Lake**
- **West Horseshoe Lake**
- **West Papoose Lake**

BURBOT

- 5 per day, 5 in possession.
- Burbot lines must be closely attended.


ARCTIC CHAR/DOLLY VARDEN

- **In stocked lakes:** 5 per day, 5 in possession. See pages 86-87.
- **In other lakes, ponds, and in all flowing waters:** 5 per day, 5 in possession, only 1 fish may be 12 inches or longer.

METHODS AND MEANS - KNIK ARM

TACKLE RESTRICTIONS:

- Bait and multiple hooks are allowed unless prohibited in the special regulations that follow.

 **January 1-December 31: Bow and arrow and spear may be used year-round to take northern pike and black fish in the flowing waters of the Palmer-Wasilla Zone.**

SPECIAL REGULATIONS - KNIK ARM

BIG LAKE: See page 35.

BONNIE LAKES CONNECTING STREAM from the outlet at Upper Bonnie lake to the inlet of Lower Bonnie Lake:

- **July 1-April 14:** Open to sport fishing.

BODENBURG CREEK including all waters of Knik River within a 100-yard radius of the mouth of the creek (see map on page 36):

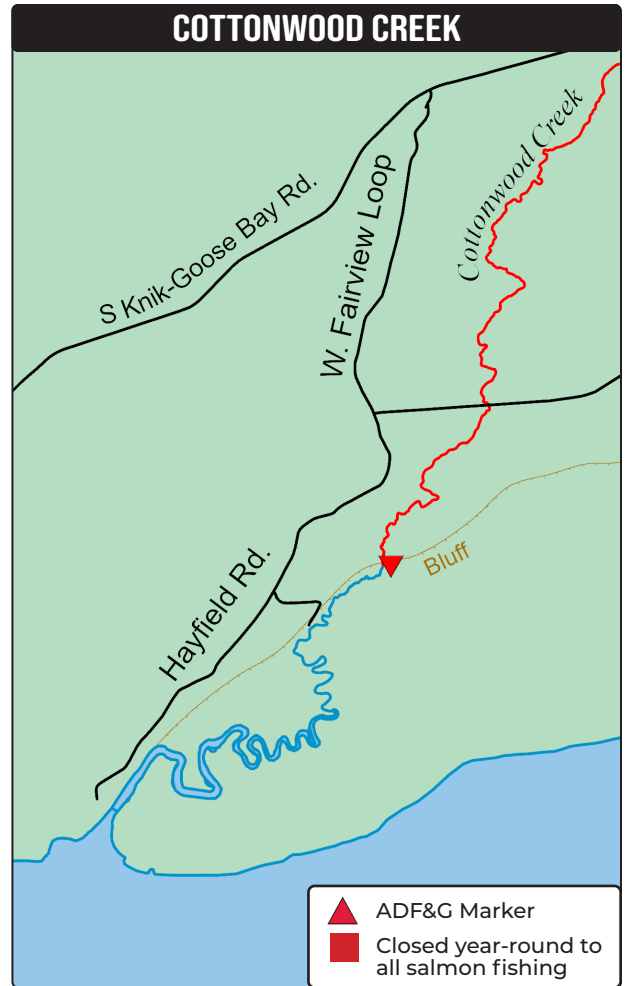
- **Closed year-round to all salmon fishing.**
- **April 15-June 15:** Catch-and-release fishing for rainbow/steelhead trout only. All rainbow/steelhead trout caught must be released immediately.

COTTONWOOD CREEK DRAINAGE:

- **If you retain a bag limit of salmon from Cottonwood Creek, you may not fish for any species of fish in waters open to salmon fishing on that same day.**
- **All lakes of the Cottonwood Creek drainage, including Wasilla Lake:**
 - **Closed year-round to all salmon fishing.**
- **From its mouth upstream to ADF&G markers 1 mile upstream from the Palmer Hayflats State Game Refuge access road:**
 - **June 15-April 14:** Open to sport fishing for all species other than king salmon. Fishing is allowed only on Saturdays and Sundays and only between the hours of 5 a.m. and 10 p.m.
- **All flowing waters of Cottonwood Creek above the ADF&G markers 1 mile upstream from Palmer Hayflats State Game Refuge access road:**
 - **Closed year-round to all salmon fishing.**
 - **June 15-April 14:** Open to sport fishing for other species.

 **EKLUTNA TAILRACE YOUTH-ONLY KING AND COHO FISHERIES:**

- The Youth-Only Fishery area is on both sides of the Eklutna Tailrace from the mouth upstream to the walking bridge.
- Youth-Only Fishery areas are open to fishing for anglers who are 15 years of age or younger.
- The third Saturday in June from 6 a.m. to 6 p.m. and the third Saturday in August from 6 a.m. to 6 p.m. In 2024, this will be June 15 and August 17.



EKLUTNA TAILRACE:

- **Salmon (other than king salmon):**
 - 16 inches or longer: 3 per day, 3 in possession, all 3 may be coho salmon.
 - Less than 16 inches: 10 per day, 10 in possession in combination.
- **April 15-June 15:**
 - **Rainbow/steelhead trout:** Catch-and-release fishing only. All rainbow/steelhead trout caught must be released immediately.
- **All waters within a ½ mile radius of its confluence with the Knik River, and to an ADF&G marker located 2 miles downstream of the confluence:**
 - **King salmon:**
 - Open year-round to king salmon fishing.
 - **Once you have retained a king salmon 20 inches or longer, you may no longer fish in any waters open to king salmon fishing on that same day.**
 - 20 inches or longer:
 - 1 per day, 1 in possession.
 - Less than 20 inches:
 - 10 per day, 10 in possession.

FISH CREEK DRAINAGE:

- If you retain a bag limit of salmon from Fish Creek, you may not fish for any species of fish in waters open to salmon fishing on that same day.

NEW From ADF&G markers at the mouth of Fish Creek, including all waters within a ¼ mile radius of its confluence with the Knik Arm (61°26'12.86" N lat. and 149°46'14.05" W long), upstream to ADF&G markers ¼ mile upstream from the Knik-Goose Bay Road:

- **June 15-July 14** and **August 5-December 31**:
 - Open to sport fishing for all species other than king salmon.
 - **Fishing is allowed 7 days a week** and only between the hours of 5 a.m. and 10 p.m.
- From the ADF&G markers ¼ mile upstream from the Knik-Goose Bay Road, upstream to ADF&G markers located ¼ mile upstream of the Lewis Road Bridge:
 - **Closed year-round to all sport fishing.**
- Flowing waters from the ADF&G markers ¼ mile upstream of the Lewis Road Bridge, including Meadow Creek:
 - **June 15-April 14**: Open to sport fishing for all species other than salmon.
 - **Closed year-round to all salmon fishing.**
- Fish Creek drainage lakes:
 - Open year-round to sport fishing for all species other than salmon.

FISH CREEK YOUTH-ONLY FISHERY:

- From ADF&G markers at the mouth of Fish Creek upstream to ADF&G markers ¼ mile upstream from the Knik-Goose Bay Road:
 - If you are 15 years of age or younger, you may fish for all species, except king salmon.
 - Sport fishing is allowed between 5 a.m. and 10 p.m. daily on the first Saturday and Sunday in August each year.
 - In 2024, this will be August 3 and 4. General regulations and limits apply, see pages 33-34.

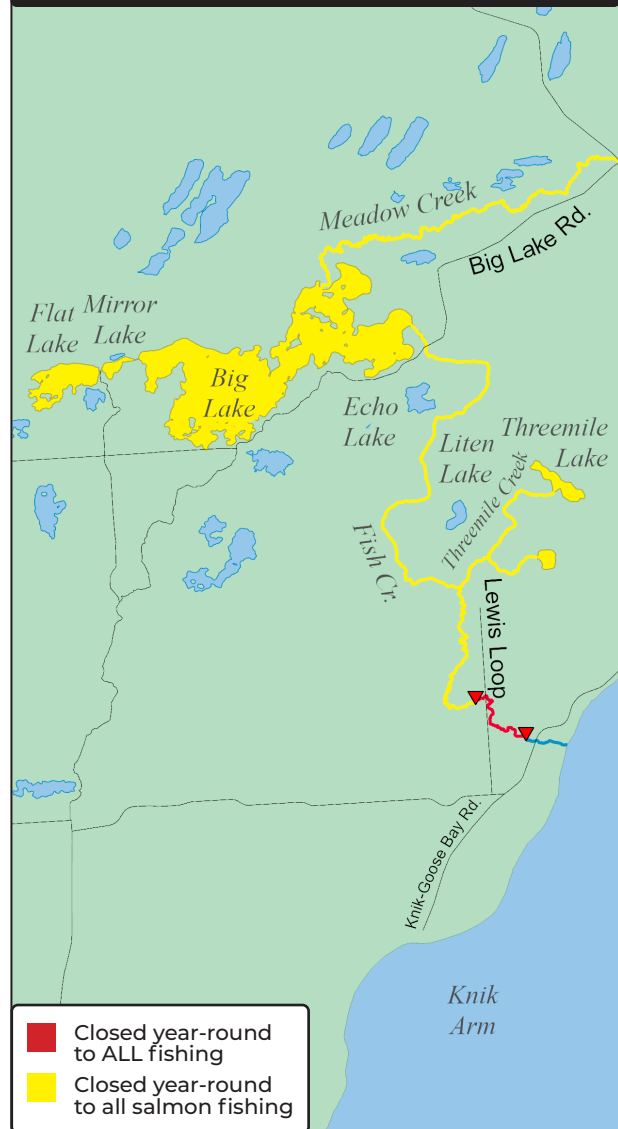
NEW BIG, MIRROR, AND FLAT LAKES:

- **Closed year-round to all salmon fishing.**
- **Arctic char/Dolly Varden: Catch-and-release fishing only. All Arctic char/Dolly Varden caught must be released immediately.**
- **November 1-April 30**:
 - Only one unbaited, single-hook, artificial lure or fly is allowed, including fishing for burbot.
 - **Chumming is prohibited.**
- When fishing through the ice, you may use two lines, but each line may have only one single-hook (a hook with only one point).



Create fishing memories with your kids.

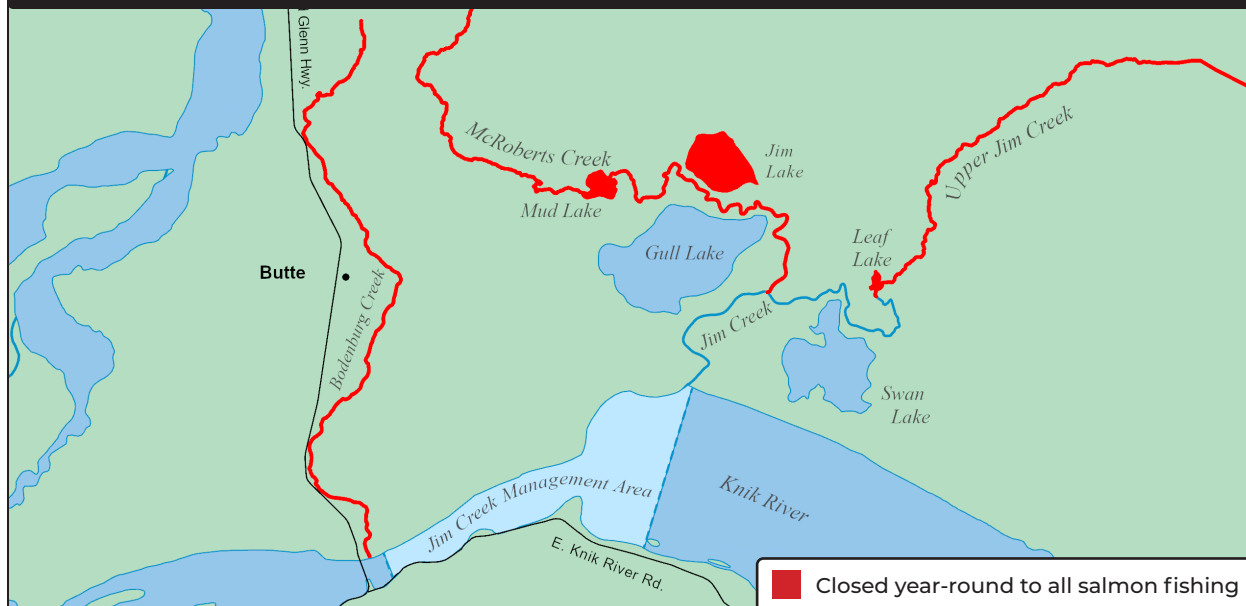
FISH CREEK DRAINAGE



- Burbot:
 - **November 1-March 14**: 2 per day, 2 in possession.
 - **March 15-April 30**: **No retention of burbot.**
 - **May 1-October 31**: 5 per day, 5 in possession.
- Northern pike:
 - **November 1-March 15**: You may fish for northern pike through the ice in Big Lake using 5 lines between the hours of 8 a.m. and 5 p.m.
 - **Live release of northern pike is prohibited.** See page 33 for more information.
 - Hook gap must be at least ¾ inch from point to shank.
 - Two single-hooks (a hook with one point) are allowed per line as long as both hooks are attached to the same piece of bait.
 - A whole legally recognized bait fish such as herring or smelt must be used if fishing with bait.
 - Bait must be suspended above then bottom of the lake.
 - Fishing lines must be closely attended.
 - All other species of fish must be immediately released unharmed.

...continued

JIM CREEK DRAINAGE INCLUDING BODENBURG CREEK



JIM CREEK DRAINAGE - including all waters downstream to the Knik River and continuing downstream on the Knik River to within 100 yards of its confluence with Bodenburg Creek:

- **January 1-July 31:** Open to sport fishing for all species other than king salmon.
- **April 15-June 15:** Catch-and-release fishing only. All rainbow/steelhead trout caught must be released immediately.
- **August 1-December 31:** Sport fishing for any species is closed on Mondays and Tuesdays, and fishing is only allowed between the hours of 5 a.m. and 10 p.m. Wednesdays through Sundays. Daily limits are the same as shown under general regulations on pages 33-34.
- **If you retain a bag limit of coho salmon (which is 2 per day) from Jim Creek, you may not fish for any species of fish in waters open to salmon fishing on that same day.**
- **Upper Jim Creek (upstream of Leaf Lake), Jim Lake, Leaf Lake, Mud Lake, and McRoberts Creek:**
 - Open year-round to sport fishing for all species other than salmon.

JOHNSON LAKE (near Palmer):

- **Closed year-round to all sport fishing.**

THE LITTLE SUSITNA RIVER DRAINAGE:

Check for emergency orders online at www.adfg.alaska.gov/sf/EONR prior to fishing.

- You may not sport fish from a boat that is powered by the use of a motor, unless the motor is a four-stroke motor or a direct fuel injection two-stroke motor. You may use a boat powered by a non-direct fuel injected two-stroke to access areas to sport fish from the bank of the river, but may not sport fish from the boat.
- **If you retain a bag limit of other salmon 16 inches or longer from the Little Susitna River, you may not fish for any species of fish in the Little Susitna River downstream of the Parks Highway on that same day.**

- **May 15-July 13:** In waters open to king salmon fishing, fishing is only allowed between the hours of 6 a.m. and 11 p.m. each day.
- A coho salmon removed from the water must be retained. You must not remove a coho salmon from the water if you intend to release it.
- **If you retain a king salmon 20 inches or longer, you may not fish in waters open to king salmon fishing anywhere on that same day anywhere.**
- **Little Susitna River flowing waters, from its mouth upstream to the Parks Highway:**
 - Open year-round to sport fishing for all species other than king salmon.
 - **August 6-September 30:** Bait and multiple hooks are allowed.
 - **October 1-August 5:** Only unbaited, artificial lures or flies are allowed.
 - King salmon:
 - **January 1-July 13:** Open to king salmon fishing.
 - 20 inches or longer: 1 per day, 1 in possession.
 - Less than 20 inches: 10 per day, 10 in possession.
 - Rainbow/steelhead trout:
 - **April 15-June 14:** Catch-and-release fishing only. All rainbow/steelhead trout caught must be released immediately.
 - **Nancy Lake Creek drainage, upstream of an ADF&G marker about ¼ mile upstream of its confluence with the Little Susitna River:**
 - **Closed to all salmon fishing, including catch-and-release.**
 - **Little Susitna River flowing waters upstream of the Parks Highway:**
 - **Closed year-round to all salmon fishing.**
 - **June 15-April 14:**
 - Open to sport fishing for species other than salmon.
 - Only one unbaited, single-hook, artificial lure or fly is allowed.

LONG LAKE (Kepler-Bradley Complex):

- **May 1-October 31:** Open to sport fishing.
- Only one unbaited, single-hook, artificial lure or fly is allowed.
- Rainbow trout: Catch-and-release fishing only. All rainbow trout caught must be released immediately.

NANCY LAKE:

- **Closed year-round to burbot fishing.**
- Northern pike:
 - **November 1-March 15:** You may fish for northern pike through the ice in Nancy Lake using 5 lines between the hours of 8 a.m. and 5 p.m. The following regulations apply:
 - **Live release of northern pike is prohibited.** See page 33 for more information.
 - Hook gap must be at least 3/4 inch from point to shank.
 - Two single hooks are allowed per line as long as both hooks are attached to the same piece of bait.
 - A whole legally recognized bait fish such as herring or smelt must be used if fishing with bait.
 - Bait must be suspended above the bottom of the lake.
 - Fishing lines must be closely attended.
 - All other species of fish must be immediately released unharmed.

WASILLA CREEK DRAINAGE (including Rabbit Slough):

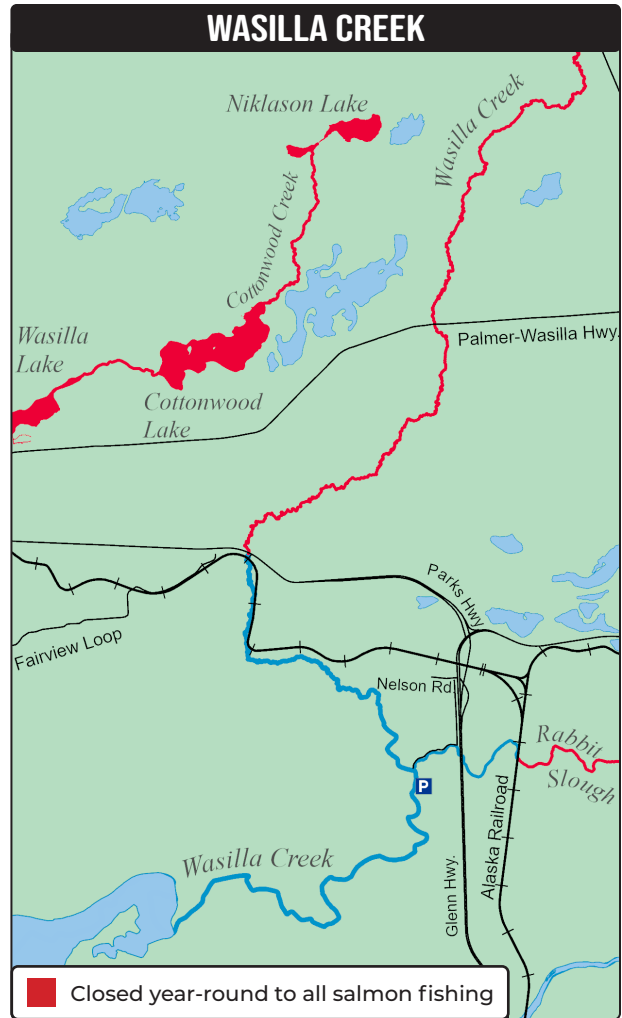
- **If you retain a bag limit of salmon from the Wasilla Creek drainage (including Rabbit Slough), you may not fish for any species of fish in waters open to salmon fishing on that same day.**
- **July 15-August 15:** Motorized watercraft having a total propshaft rating greater than 3 HP may not be used on Wasilla Creek on Saturdays and Sundays.
- **From its mouth upstream to the Alaska Railroad Bridge, including lakes and ponds:**
 - **June 15-April 14:** Open to sport fishing for all species other than king salmon.
 - Fishing is allowed only on Saturdays and Sundays and only between the hours of 5 a.m. and 10 p.m.
 - Bait and multiple hooks are allowed.
- **Upstream of the Alaska Railroad Bridge:**
 - **Closed year-round to all salmon fishing.**
 - **June 15-April 14:** Open to sport fishing for all species other than salmon.

WISHBONE LAKE (near Sutton):

- **May 1-October 31:** Open to sport fishing.
- Only one unbaited, single-hook, artificial lure or fly is allowed.
- Rainbow trout: Catch-and-release fishing only. All rainbow trout caught must be released immediately.

WOLVERINE LAKE DRAINAGE (near Palmer) - from its confluence with Wolverine Creek upstream to and including Wolverine Lake:

- **June 15-April 14:** Open to sport fishing.



River fishing for coho salmon.