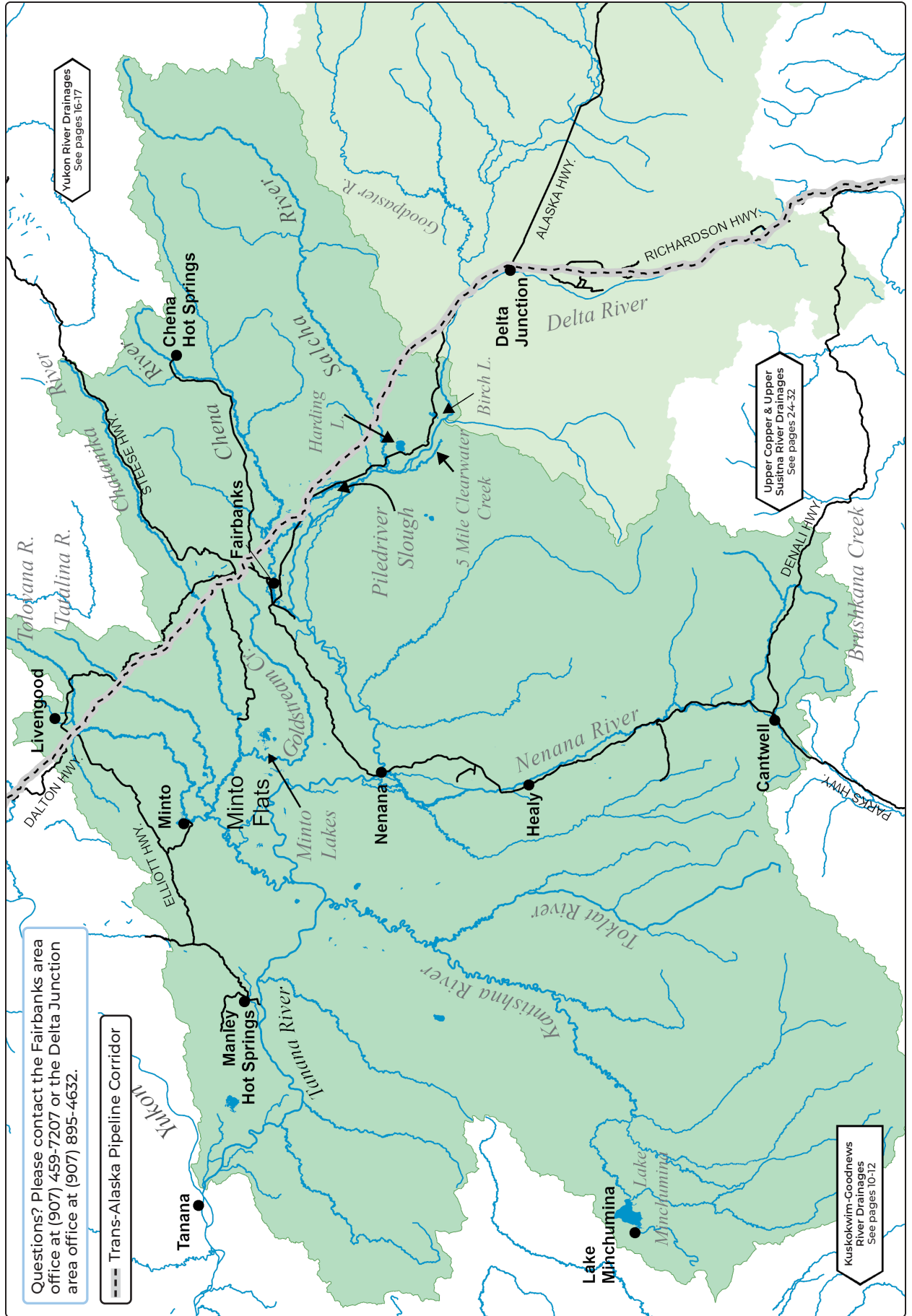


LOWER TANANA RIVER DRAINAGE



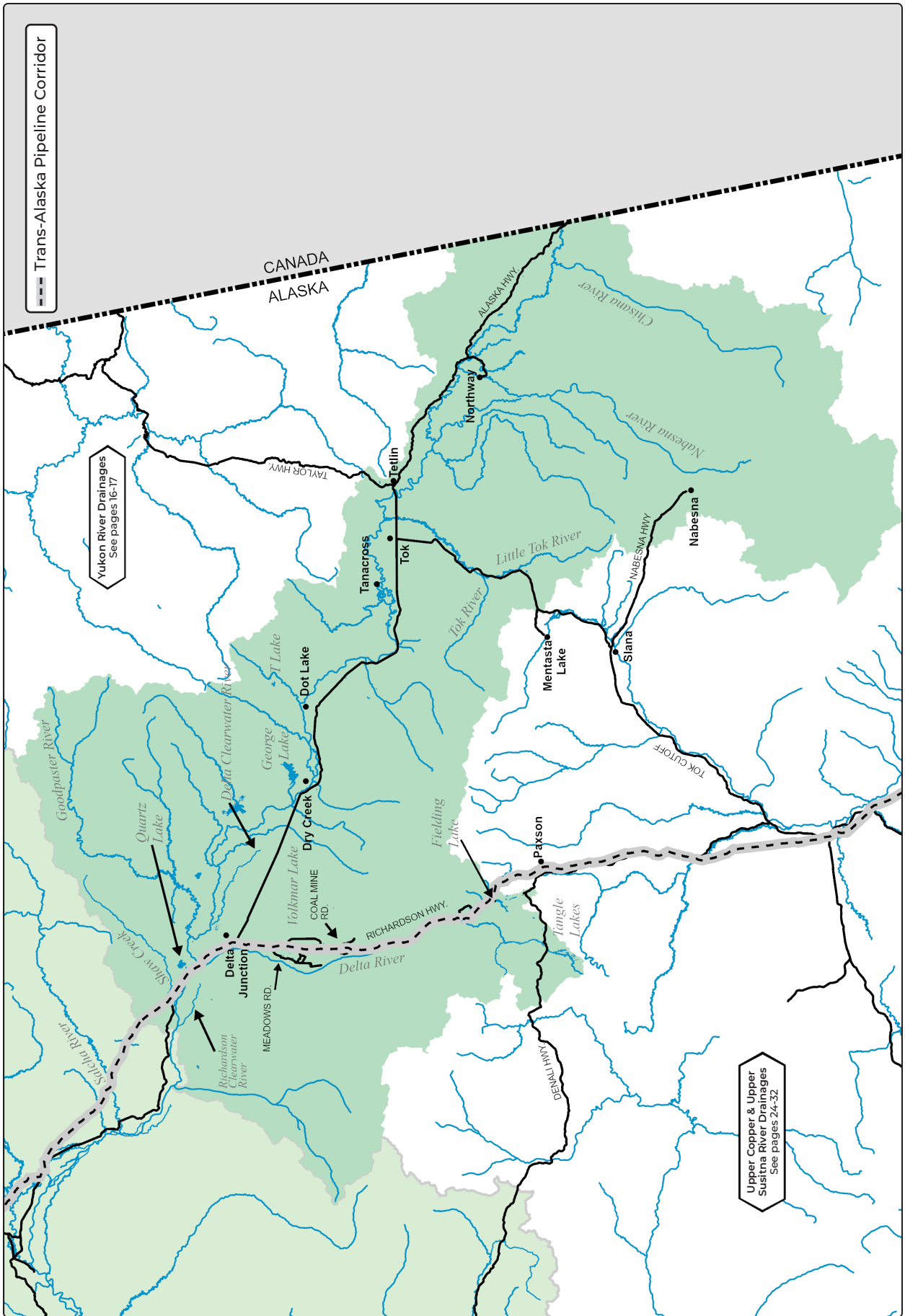
Questions? Please contact the Fairbanks area office at (907) 459-7207 or the Delta Junction area office at (907) 895-4632.

--- Trans-Alaska Pipeline Corridor

Yukon River Drainages
See pages 16-17

Upper Copper & Upper
Susitna River Drainages
See pages 24-32

Kuskokwim-Coodnews
River Drainages
See pages 10-12



UPPER TANANA RIVER DRAINAGE

GENERAL REGULATIONS - TANANA

Inclusive waters: The Tanana River Area consists of all waters of the Tanana River from its mouth at the Yukon River upstream to the Canadian border.

Fishing is open year-round for all species unless otherwise noted below or in special regulations.

Check for emergency orders online at www.adfg.alaska.gov/sf/EONR prior to fishing.

KING SALMON

- 20 inches or longer: 1 per day, 1 in possession.
- Less than 20 inches: 10 per day, 10 in possession.
- If you intend to release a king salmon, you must **NOT** remove it from the water. A king salmon that is removed from the water must be retained and becomes part of the bag limit of the person who originally hooked it.

CHUM & COHO SALMON

- 3 per day, 3 in possession, in combination, no size limit.

ARCTIC CHAR & DOLLY VARDEN

- 10 per day, 10 in possession, no size limit.

LAKE TROUT

- 2 per day, 2 in possession, no size limit.

ARCTIC GRAYLING

- 5 per day, 5 in possession, no size limit.

NORTHERN PIKE

- **Season:** Fishing for northern pike is open year-round in flowing waters and lakes of the Tanana River drainage, excluding the Tolovana River drainage and those lakes listed below:
 - See the special regulations for northern pike fishing seasons in the Chatanika River, Harding Lake, the Tolovana River drainage (including Minto Flats and Minto Lakes, Goldstream Creek), and Volkmar Lake.
 - Northern pike stocks in the lakes and flowing waters of Minto Flats support both subsistence and sport fisheries. Therefore, sport fish regulations in Minto Flats may be changed pre-season by emergency order.
- 5 per day, 5 in possession, only 1 of which may be 30 inches or longer.
- When fishing for northern pike through the ice, only 2 closely attended lines may be used, regardless of the bag limit.
- May not be taken with set lines.

WHITEFISH

- 15 per day, 15 in possession, no size limit.

SHEEFISH

- 2 per day, 2 in possession, no size limit.

STOCKED LAKES

- Arctic char/Dolly Varden, Arctic grayling, rainbow trout, lake trout, and landlocked salmon:
 - 10 per day, 10 in possession in combination, only 2 of which may be lake trout and only 1 of which may be 18 inches or longer (with the exception of Harding Lake).

OTHER FINFISH

- No limit.

BURBOT

- **All lakes:** 5 per day, 5 in possession, no size limit.
- **Flowing waters:** 15 per day, 15 in possession, no size limit.
- **Burbot Set Line Regulations:** (see page 7 "Sport Fishing Gear for Burbot"):
 - **Tanana River drainage - lakes:**
 - Burbot set lines **may not** be used in Clearwater, Fielding, Grizzly, Harding, Jack, "T", or Tangle lakes system (all waters of the Delta River drainage upstream of Wildhorse Creek including Landmark Gap and Glacier Gap lakes).
 - **Tanana River drainage - rivers and streams:**
 - Set lines may be used year-round to catch burbot in all flowing waters of the Tanana River drainage, except in **George Lake Outlet Stream** set lines may only be used from **October 15-May 15**.
 - Hooks are single hooks with gap between point and shank larger than 3/4 inch.

METHODS AND MEANS - TANANA

HOOK SIZE:

- Multiple hooks with a gap between point and shank larger than 1/2 inch may be used for taking fish other than salmon, except where noted.

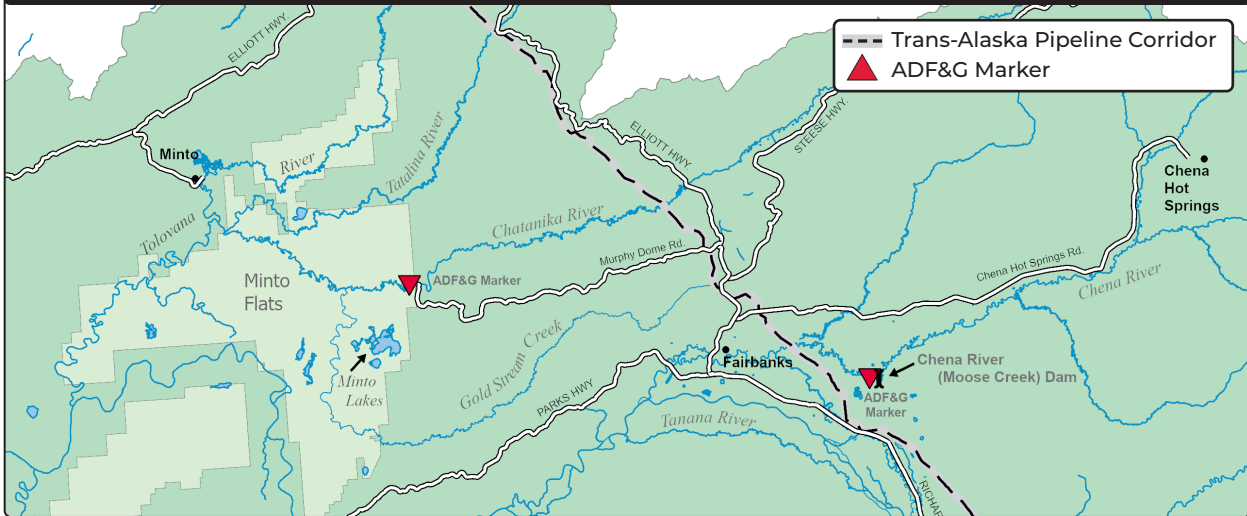
ICE HOUSES:

- All ice houses not removed from the ice at the end of a day's fishing must be registered and a permit obtained from ADF&G.
- Each registered ice house must have its permit number displayed on its side and roof in distinguishable numbers at least 12 inches in height.
- Ice houses must be removed from all water bodies by April 30.

USE OF SPEAR OR BOW AND ARROW:

- Suckers and burbot may be taken with spear or bow and arrow year-round.
- **Northern pike** may be taken by spear or bow and arrow only in waters for which there is an open season.
 - Northern pike may be speared by persons completely submerged year-round.
 - **September 1-April 30:** Northern pike may be taken by spear or bow and arrow.
- **Whitefish (excluding sheefish)** may be taken by spear or bow and arrow under one of the following conditions:
 - Whitefish (excluding sheefish) may be speared by persons completely submerged year-round.
 - **September 1-April 30:** Whitefish (excluding sheefish) may be taken by spear or bow and arrow.
 - In the Chatanika River drainage, whitefish may only be taken by spear under the authority of a personal use permit. Household permits are issued by an online lottery. Instructions and lottery dates will be announced by August 1. The household limit is 10 whitefish. The specific open fishing dates and regulations are provided on the permit. A press release is issued every July detailing when permits will be available.

CHATANIKA AND CHENA RIVER DRAINAGES



SPECIAL REGULATIONS - TANANA

CATCH-AND-RELEASE LAKES:

- The following waters listed below are open to catch-and-release fishing only. All fish caught must be released immediately.
 - Bathing Beauty Pond
 - Bear Lake (Eielson AFB)
 - Moose Creek Drainages
 - Moose Lake (Eielson AFB)
 - Piledriver Slough
 - Polaris Lake

CHATANIKA RIVER and its tributaries:

- Open to sport fishing year-round, except for northern pike (see below).
- Only unbaited, artificial lures or flies may be used, except that bait may be used only on hooks with a gap between point and shank larger than $\frac{3}{4}$ inch.
- **Upstream from the mouth of Goldstream Creek to the boundary of the Fairbanks Nonsubsistence Use Area (identified by an ADF&G marker located approximately 1 mile downstream of the Murphy Dome Road):**
 - Only single-hooks may be used.
 - Whitefish may not be taken by spear or bow and arrow. Please contact the ADF&G Fairbanks office for information on the Chatanika River personal use whitefish spear fishery. For sport fishing (hook and line) whitefish limits, see page 20.
 - **June 1-October 14:** Open to northern pike fishing.
- **Upstream of the upstream edge of the Elliott Highway bridge:**
 - **Closed to all salmon fishing.** All salmon caught must be released immediately.

CHENA RIVER and its tributaries, including Badger or Chena Slough:

- Open to sport fishing year-round.
- Only one unbaited, single-hook, artificial lure or fly may be used, except that an artificial lure with a single treble hook with a gap between point and shank larger than $\frac{1}{2}$ inch may be used when fishing for species other than salmon. Treble hooks may not be used when fishing for salmon.
- Bait may only be used on a single hook with a gap between point and shank larger than $\frac{3}{4}$ inch.
- **Downstream from the ADF&G marker located 300 feet downstream of the Chena River dam:**
 - Arctic grayling:
 - **April 1-May 31:** Catch-and-release fishing only. All Arctic grayling caught must be released immediately.
 - **June 1-March 31:** Open to Arctic grayling fishing. 1 per day, 1 in possession, no size limit. See exceptions for the Youth-Only Fishery below.
- **Upstream from the ADF&G marker located 300 feet downstream of the Chena River dam:**
 - **Closed to all salmon fishing.** All salmon caught must be released immediately.
 - Arctic grayling: Catch-and-release fishing only. All Arctic grayling caught must be released immediately.



CHENA RIVER YOUTH-ONLY FISHERY:

- **Downstream from a regulatory marker 300 feet downstream of the Chena River Flood Control Project:**
 - Anglers 15 years of age or younger may fish for Arctic grayling on the following dates in 2024: June 15-16, June 22-23, June 29-30, & July 6-7.
 - Arctic grayling: 1 per day, any size.
 - Anglers 16 years of age and older: **Closed to Arctic grayling fishing**, during the Youth-Only Fishery dates listed above.

...continued

MILITARY LANDS: The Northern Alaska Region encompasses four military bases. Civilians are allowed to sport fish on some of these military lands, but a permit from the military is required, and some areas may be closed periodically. Please call for more information **BEFORE** entering military lands to sport fish:

Eielson AFB: (907) 377-5182

Donnelly Training Area: (907) 361-9684 <http://usartrak.isportsman.net>

Clear SFS: (907) 585-6592 or (907) 585-6293

Fort Wainwright: (907) 361-9684 <http://usartrak.isportsman.net>

DELTA RIVER and its tributaries:

- Open to sport fishing year-round, except for salmon.
- **Closed to all salmon fishing.** All salmon caught must be released immediately.
- **From the mouth of the Delta River to an ADF&G marker 2 miles upstream:**
 - **Closed to sport fishing.**

DELTA CLEARWATER RIVER - including the Clearwater Lake drainage:

- Open to sport fishing year-round.
- Arctic grayling: 1 per day, 1 in possession, which must be 12 inches or less.
- **January 1-August 31:** Only one unbaited, single-hook, artificial lure or fly may be used.
- **September 1-December 31:** Only unbaited, artificial lures or flies may be used.
- **Clearwater Lake:**
 - Set lines may not be used.

FIELDING LAKE:

- **September 1-September 30:** **Closed to burbot and lake trout fishing.**
- Only one unbaited, single-hook, artificial lure or fly may be used.
- Set lines may not be used.
- Burbot: 1 per day, 1 in possession, no size limit.
- Lake trout: 1 per day, 1 in possession, no size limit.

FIVE MILE CLEARWATER CREEK:

- Open to sport fishing year-round.
- **January 1-August 31:** Only one unbaited, single-hook, artificial lure or fly may be used.
- **September 1-December 31:** Only unbaited, artificial lures or flies may be used.
- Arctic grayling: 2 per day, 2 in possession, only 1 of which may be 12 inches or longer.

GEORGE LAKE AND GEORGE LAKE OUTLET STREAM:

- **October 15-May 15:** Set lines may be used.

GOODPASTER RIVER DRAINAGE:

- **Closed to all salmon fishing, except from the confluence of the Tanana River to an ADF&G marker located approximately 25 miles upstream:**
 - Open to catch-and-release fishing for king salmon only. All king salmon caught must be released immediately.
- **June 1-August 31:** Only one unbaited, single-hook, artificial lure or fly may be used.

GRIZZLY LAKE (of the Nabesna River drainage):

- Open to sport fishing year-round.
- Set lines may not be used.

HARDING LAKE:

- Open to sport fishing year-round, except for northern pike.
- **Closed to northern pike fishing,** this includes spearing, and bow and arrow fishing. All northern pike caught must be released immediately.
- Only one single-hook or one single-hook, artificial lure or fly may be used.
- Set lines may not be used.
- Burbot: 2 per day, 2 in possession, no size limit.
- Lake trout: 1 per day, 1 in possession, which must be 30 inches or longer.
- Arctic char/Dolly Varden, landlocked salmon, and rainbow trout: 10 per day, 10 in possession in combination, only 1 of which may be 18 inches or longer.

JACK LAKE (of the Nabesna River drainage):

- Open to sport fishing year-round.
- Set lines may not be used.

KIMBERLY LAKE:

- **Closed year-round to all sport fishing.**

PILED RIVER SLOUGH AND MOOSE CREEK:

- Only one unbaited, single hook, artificial lure or fly may be used.
- Open to catch-and-release fishing only. All fish caught must be released immediately.

RAINBOW LAKE (west of Delta Junction):

- Open to sport fishing year-round.
- Rainbow trout: 5 per day, 5 in possession, only 1 of which may be 18 inches or longer.

RICHARDSON CLEARWATER RIVER DRAINAGE:

- Open to sport fishing year-round.
- Only unbaited, artificial lures or flies may be used.

SALCHA RIVER and its tributaries:

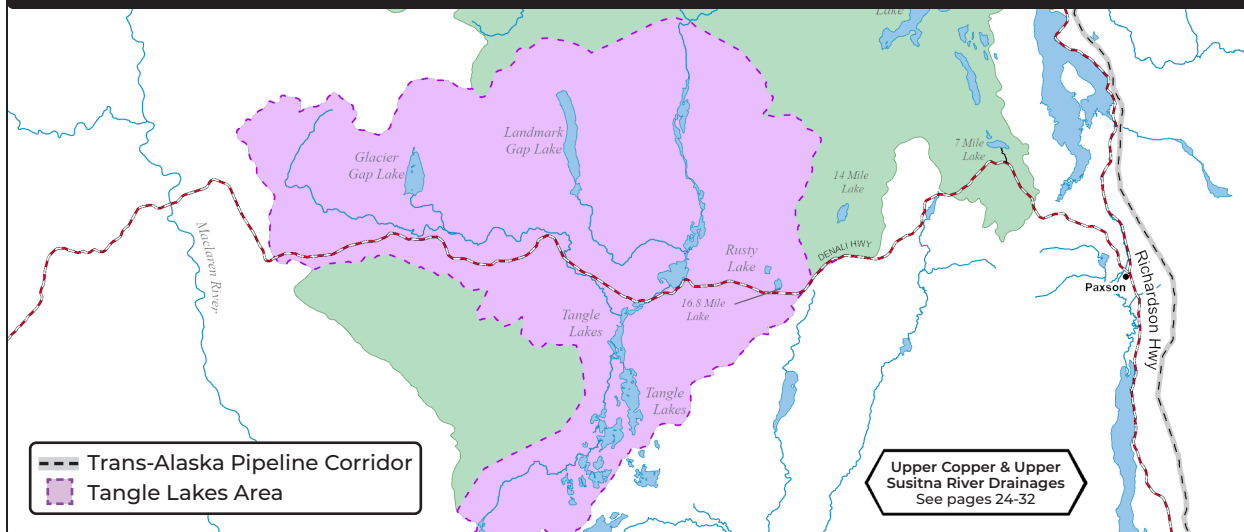
- Open to sport fishing year-round.
- **Fishing from the Richardson Highway bridge over the Salcha River is prohibited.**
- Only unbaited, artificial lures or flies may be used, except that bait may be used only on hooks with a gap between point and shank larger than 3/4 inch.
- **Upstream from the ADF&G marker located about 2 1/2 miles upstream of the Richardson Highway bridge:**
 - **Closed to all salmon fishing.** All salmon caught must be released immediately.

...continued



Take a kid fishing!

TANGLE LAKES SYSTEM



SHAW CREEK and its tributaries:

- Open to sport fishing year-round.
- Only one unbaited, single-hook, artificial lure or fly may be used.
- **April 1-May 31:** Catch-and-release fishing for Arctic grayling only. All Arctic grayling caught must be released immediately.
- **Downstream of the Richardson Highway Bridge:**
 - Bait may only be used on single hooks with a gap between point and shank larger than $\frac{3}{4}$ inch.

STOCKED LAKES (listed on pages 38-39):

- Open to sport fishing year-round.
- Bait and artificial lures are allowed, including treble hooks (except for Harding Lake).
- Arctic char/Dolly Varden, Arctic grayling, rainbow trout, landlocked salmon, and lake trout:
 - 10 per day, 10 in possession in combination, only 2 of which may be lake trout and only 1 of which may be 18 inches or longer (with the exception of Harding Lake).

"T" LAKE:

- Open to sport fishing year-round.
- Set lines may not be used.
- Burbot: 2 per day, 2 in possession, no size limit.

TANANA RIVER - 2 miles below and above Shaw Creek:

- Open to sport fishing year-round.
- Bait may only be used on single hooks with a gap between point and shank larger than $\frac{3}{4}$ inch.
- Arctic grayling:
 - **April 1-May 31:** Catch-and-release fishing only. All Arctic grayling caught must be released immediately.

TANGLE LAKES SYSTEM - all waters of the Delta River drainage upstream of Wildhorse Creek, including Landmark Gap and Glacier Gap Lakes:

- Open to sport fishing year-round.
- Set lines may not be used.
- Lake trout: 1 per day, 1 in possession, no size limit.
- Burbot: 2 per day, 2 in possession, no size limit.

TOKLAT RIVER DRAINAGE:

- Open to sport fishing year-round (see exception below).
- **The Toklat River drainage approximately one mile upstream and two miles downstream of the Kobi-McGrath trail crossing, enclosed by the following four points: 64° 08.21'N. lat., 150° 01.16' long., to 64° 08.21'N. lat., 149° 58.38'W. long., to 64° 10.66'N. lat., 150° 02.09'W long., to 64° 10.66'N. lat., 149° 59.72'W. long.:**
 - **August 15-May 15: Closed to sport fishing.**

TOK RIVER and its tributaries:

- Open to sport fishing year-round.
- Only one unbaited, single hook, artificial lure may be used year-round.
- **Closed to all salmon fishing.** All salmon caught must be released immediately.
- Arctic char/Dolly Varden: Catch-and-release fishing only. All Arctic char/Dolly Varden caught must be released immediately.
- **May 15-October 31:** Open to Arctic grayling fishing.
 - 2 per day, 2 in possession, no size limit.

TOLOVANA RIVER DRAINAGE - including Minto Flats, Minto Lakes, Tatalina River, Chatanika River, and Goldstream Creek:

- Open to sport fishing year-round, except for northern pike.
- **June 1-October 14:** Open to northern pike fishing.
- Northern pike stocks in the lakes and flowing waters of Minto Flats support both subsistence and sport fisheries. Therefore, sport fish regulations in Minto Flats may be changed pre-season by emergency order.

VOLKMAR LAKE:

- Open to sport fishing year-round.
- Northern pike: 2 per day, 2 in possession, only 1 of which may be 30 inches or longer.