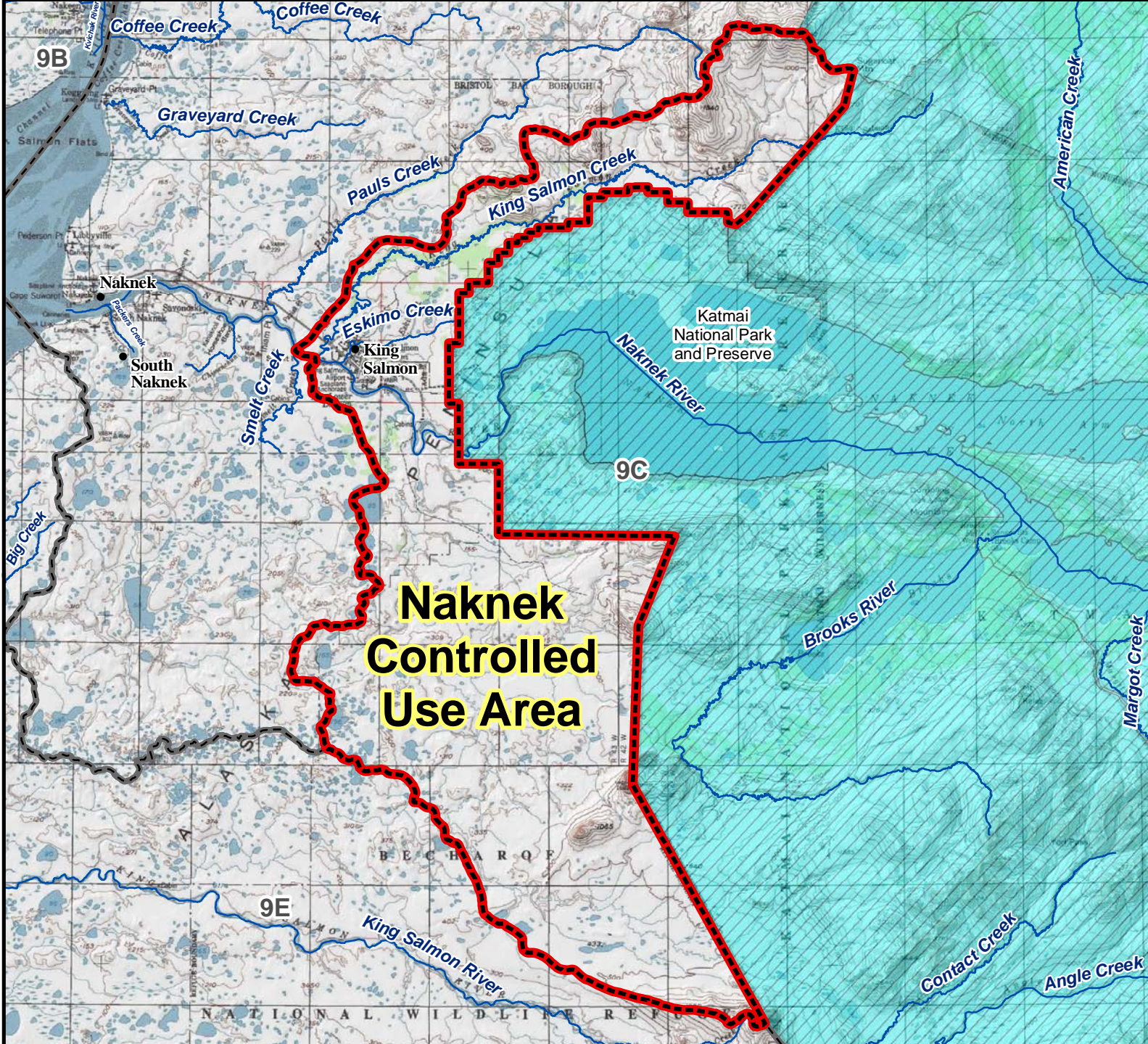


Unit 9C Naknek Controlled Use Area



**Naknek
Controlled
Use Area**

AREA DESCRIPTION: Unit 9C, the area consists of that portion of Unit 9C within the Naknek River drainage upstream from and including the King Salmon Creek drainage.

The area is closed to the use of any motorized vehicle except an aircraft, boat, or snowmachine for hunting, including the transportation of hunters, their hunting gear, or parts of game, from August 1 through November 30; however, this provision does not apply to a motorized vehicle on the Naknek-King Salmon, Lake Camp, and Rapids Camp roads, and on the Pike Ridge and King Salmon Creek trails, and on frozen surfaces of the Naknek River and Big Creek.

